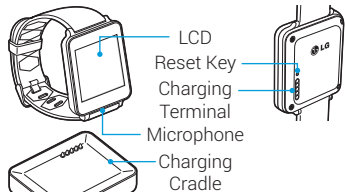


## Overview

ENGLISH

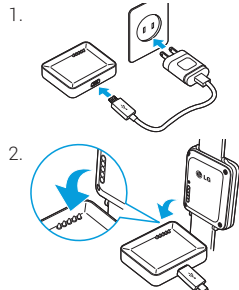


For online help and support, visit [support.google.com/XXXXX](http://support.google.com/XXXXX)



MBM00000000 (1.0)

## Charge the Watch



## Turn the Watch On/Off

Place the watch on the cradle connected to a power outlet. It will automatically turn on. To turn the watch off, tap **8** > > **Power off** > **Yes, power off.**

### **Reset**

In case the watch does not work properly, you can reset it to make it work.



- Press for 8 seconds to reset.

## Pair and Connect With a Phone

G Watch can be paired with any phones with Android OS 4.3 and above.

1. Download the **Android Wear** app from the Google Play store and install it on your phone.
2. Open the **Android Wear** app.
3. Verify Bluetooth is active on the phone.
4. Tap the G Watch model name you want to pair and tap **Pair**.

To get started, download the **Android Wear** app from the Google Play store.

Google

