



LG Innotek

Manual

RBDS-C001A Daughter Board Module

Rev A, Sept 2007



LG Innotek
Hanyang Univ. 1271, Sa-dong, Sangrok-gu ,
Ansan-si, Gyeonggi-do 426-791, Korea
Tel:82-31-436-7653
Fax:82-31-436-7991
www.lginnotek.com

RBDS-C001A-AN-01-A

COMMERCIAL IN CONFIDENCE

Copyright © 2007, LG Innotek Co., Ltd. <http://www.lginnotek.com>
All specification are preliminary and LG Innotek reserves the right to change these without notice.

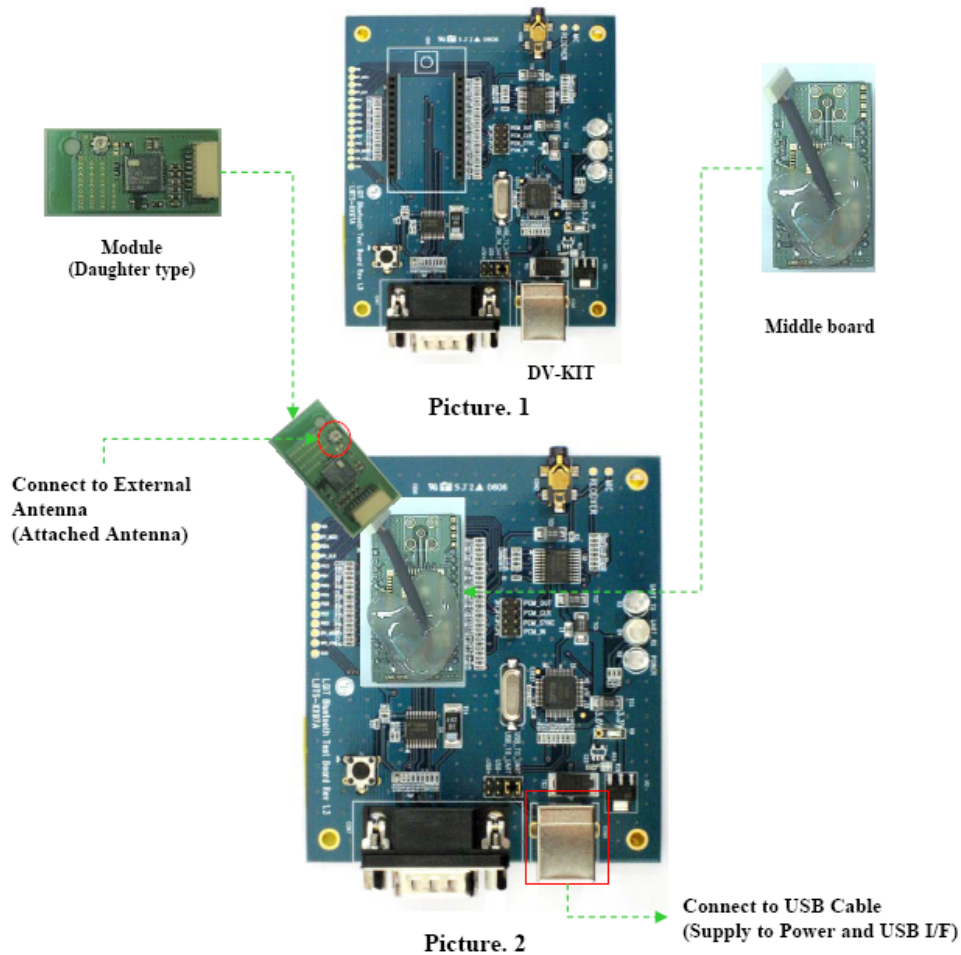
CONTENTS

1	Hardware Overview -----	2
2	LGIT Development kit (DV-kit : LBTS-XX97A) -----	3
3	USB Driver Setup -----	4
4	Overview of the Test Program -----	6
5	Installing the Test Program : Bluesuite -----	6
6	Configuration Test Program -----	6
6.1	BlueTest -----	12

1. HARDWARE OVERVIEW

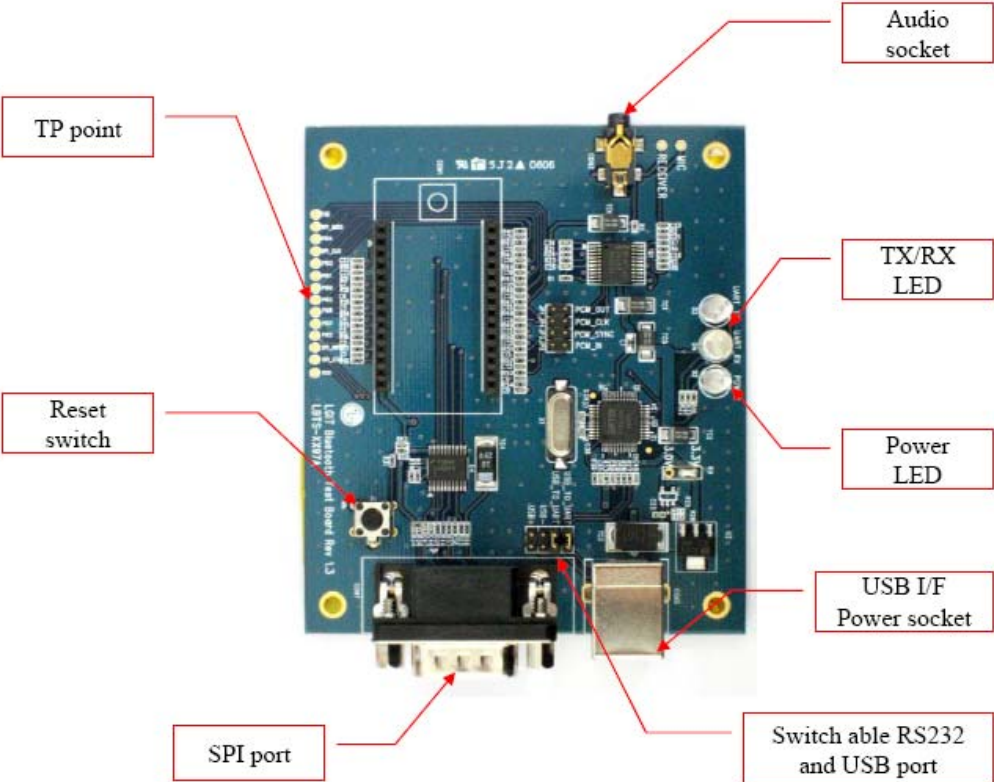
This is User manual for RBDS-C001A which is a Class 2 (4dBm Max.) Bluetooth[®] Daughter type Module for Note PC applications.

Each unit consists of a DV kit, middle board, Bluetooth module and a Antenna. (refer to Picture.1) The module shipped with the system uses the CSR BlueCore™04-ROM chip and also includes the balanced Filter, EEPROM, and a Crystal.. The radio module plugs into the middle board. (refer to Picture. 2)



2. LGIT DEVELOPMENT KIT (DV-kit : LBTS-XX97A)

The DV-kit provides serial port(UART/RS232), USB port, SPI port, Audio socket(3.5'), power supply socket. You just use USB interface for the test process



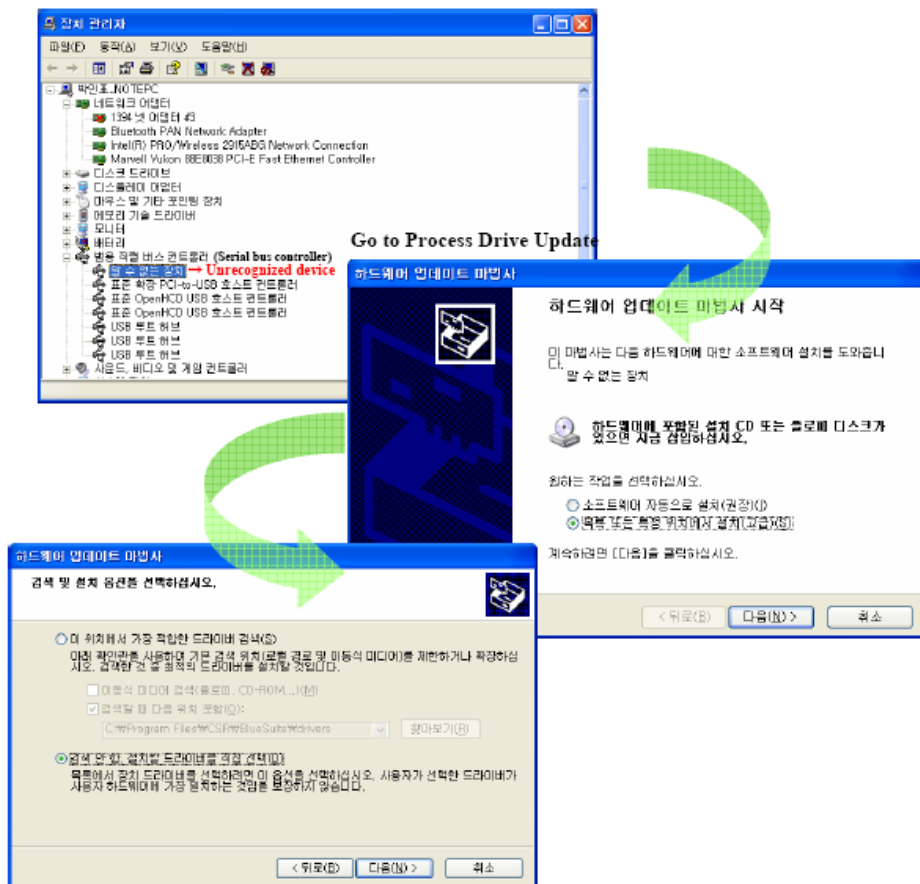
3. USB Driver Set up

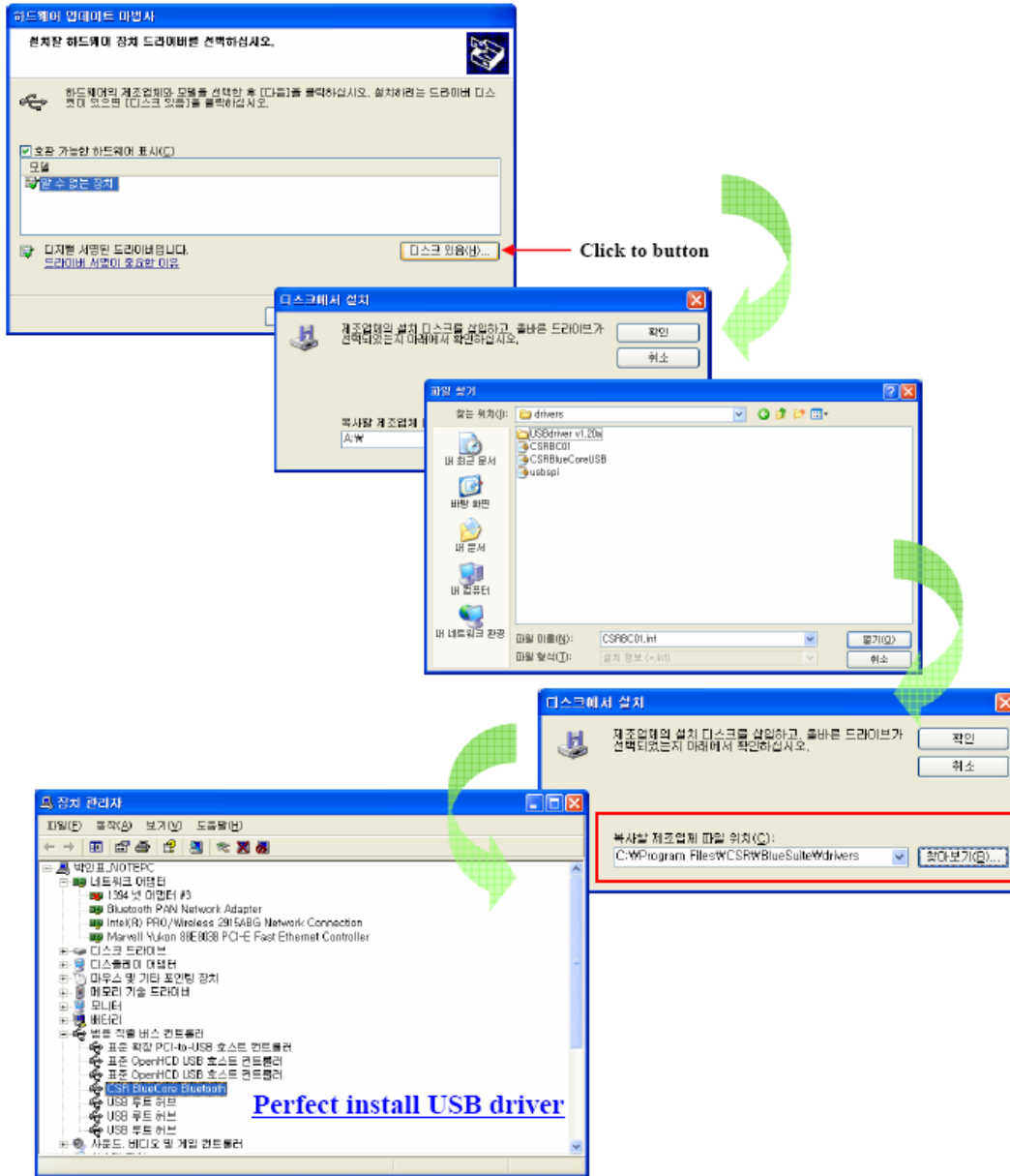
Connect to between LGIT DV-kit and TEST PC by USB Cable.
 Firstly, install USB Driver on your PC as below;

Install USB driver

USB cable from DV-kit and connect one end of USB ports on PC's (Window™2000/XP).

- See the Control Box on Window system.





4. Overview of the Test Program

The LGIT Bluetooth DV-kit is supplied with a PC program called 'Bluesuite' that consist of four kind of utility software.

This software allows the user to send text, send a file and set up a voice connection between the two system units. Users can choose between BCSP, H4(UART) or USB host interfaces.

5. Installing the Test Program (Called 'Bluesuite')

- Install 'Bluesuite' program – also available download from CSR of website www.techsupportcsr.com

Installation instructions

- 1) Download attached file 'Bluesuite_v1.24.zip'
- 2) Change the path if required, click 'unzip', click 'OK' and finally click 'Close' to complete the installation
- 3) From your PC in the folder run the file 'InstallBlueSuiteCasira.exe'

6. Configuration Test Program

The Bluesuite is consist of four programs.

- **Bluetest : using RF performance**
- Bluechat : using send text and voice connection
- Blueflash : using firmware update
- PSTool : using debug PS Key value

Bluetest getting started

Start the Bluetest Program on each PC by double Clicking on the Bluetest shortcut on your desktop, or on the Bluetest Icon in the Bluesuite folder.

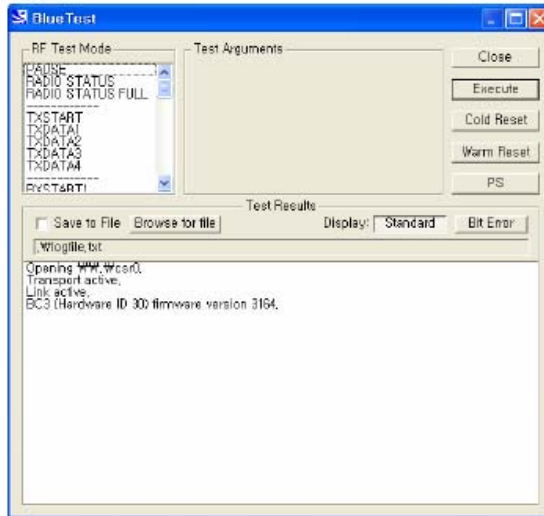
A protocol selection window will appear:



Click "OK" when your selection is complete.

The tests fall into six categories:

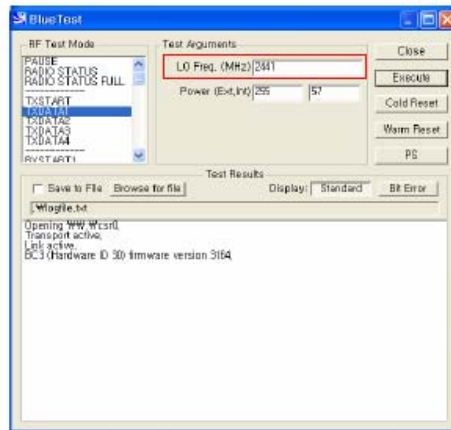
- Simple RF tests; used for PCB de-bug and optimization
- Quantitative tests for transmit and receive; used to establish the performance of the Bluetooth device.
- Loopback test modes; used for qualification and regulatory testing
- Configuration commands to set parameters for other tests
- Built-in self-test routines
- Miscellaneous test routines



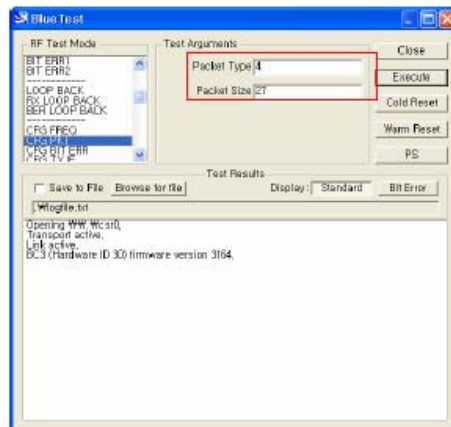
For the Radio Test (Tx Mode)

Some reference parameter put it on the Diagonal Box before test starting.

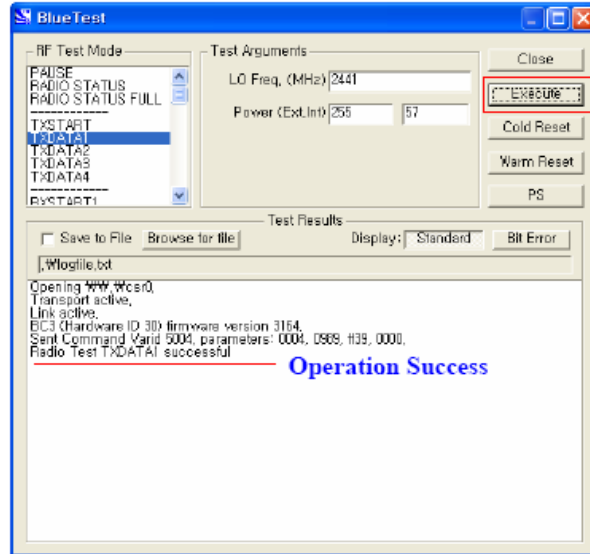
- Set RF Test Mode : TXDATA1
- Power (Ext,Int) : 255, 57(Fix Value)
- Change Frequency : 2402MHz, 2441MHz, 2480MHz



- Change Packet Size : DH1 – 4, 27(default)
DH3 – 11, 183
DH5 – 15, 339

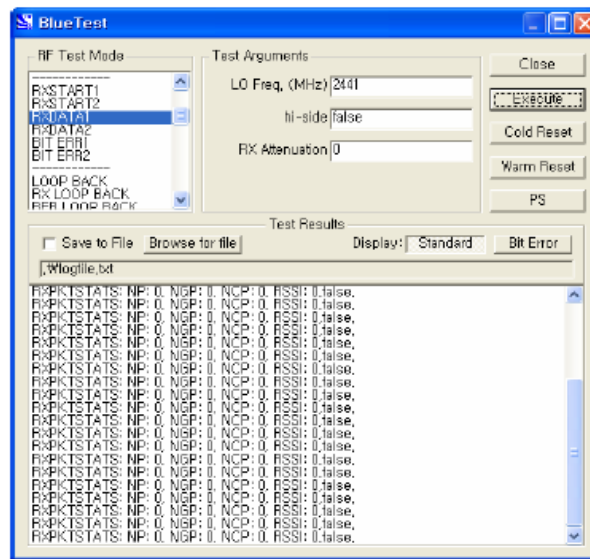


Finish all of setting condition, just click **Execute** button



For the Radio Test (Rx Mode)

- Change RF Test Mode : RXDATA1



RECORD OF CHANGES

Revision No.	Date	Description
A	Sept. 2007	Initial Release

● **Contact for Support**

Name : inpyo Park

E-mail : ippark@lginnotek.com

Tel : 82-31-436-7653

Fax : 82-31-436-7991