

# PoE Wi-Fi Bridge Manual

(PoE: Power over Ethernet)

---

[Model Name : TWFB-R101D ]

2015. 03. 06



# 1. Appearance Description for PoE Wi-Fi Bridge

## 1. Front Panel

- The front panel has the 2-Button and status LEDs in the following figure.

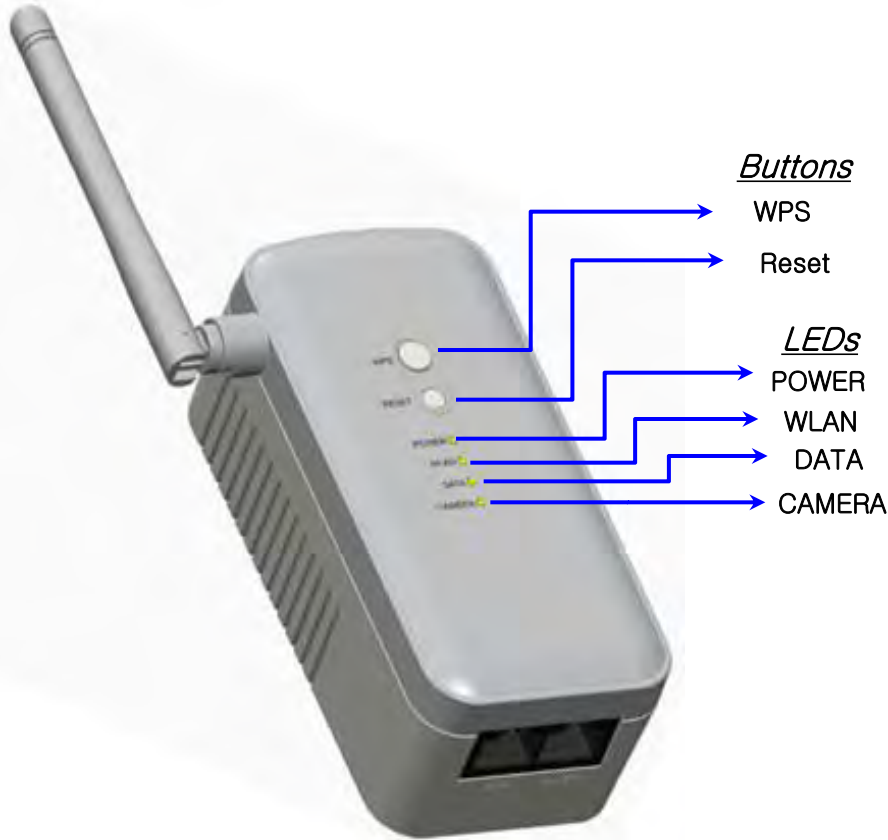


Fig 1. Front View

Button	Description
WPS	<ul style="list-style-type: none"> <li>To connect WPS to AP(Access Point)</li> </ul>
Reset	<ul style="list-style-type: none"> <li>Reboot</li> <li>Reset to Factory Default</li> </ul>
LED	Description
Power <span style="color: green;">●</span> <span style="color: white;">○</span>	<ul style="list-style-type: none"> <li>Solid Yellow Green : Power on</li> <li>Off : Power is not supplied to the PoE Wi-Fi Bridge</li> </ul>
WLAN <span style="color: green;">●</span> <span style="color: red;">●</span> <span style="color: white;">○</span>	<ul style="list-style-type: none"> <li>Solid Yellow Green : Wi-Fi Activity are in process</li> <li>Blinking Yellow Green : Wireless data is being sent or received.</li> <li>Blinking Red : The Wireless signal is weak signal</li> <li>Off : Wi-Fi access fail</li> </ul>
DATA <span style="color: green;">●</span> <span style="color: white;">○</span>	<ul style="list-style-type: none"> <li>Blinking Yellow Green : Ethernet link is detected Data Transmission on the port</li> <li>Off : No data transmission</li> </ul>
CAMERA <span style="color: green;">●</span> <span style="color: white;">○</span>	<ul style="list-style-type: none"> <li>Blinking Yellow Green : CAMERA link is detected Data Transmission on the port</li> <li>Off : No data transmission</li> </ul>

Table 1. Front Description

## 2. Back/side Panel & Label Information

- The back/side panels have the wireless antenna, power plug and 2-Lan ports.
- The label on the bottom shows the MAC address, serial Number.

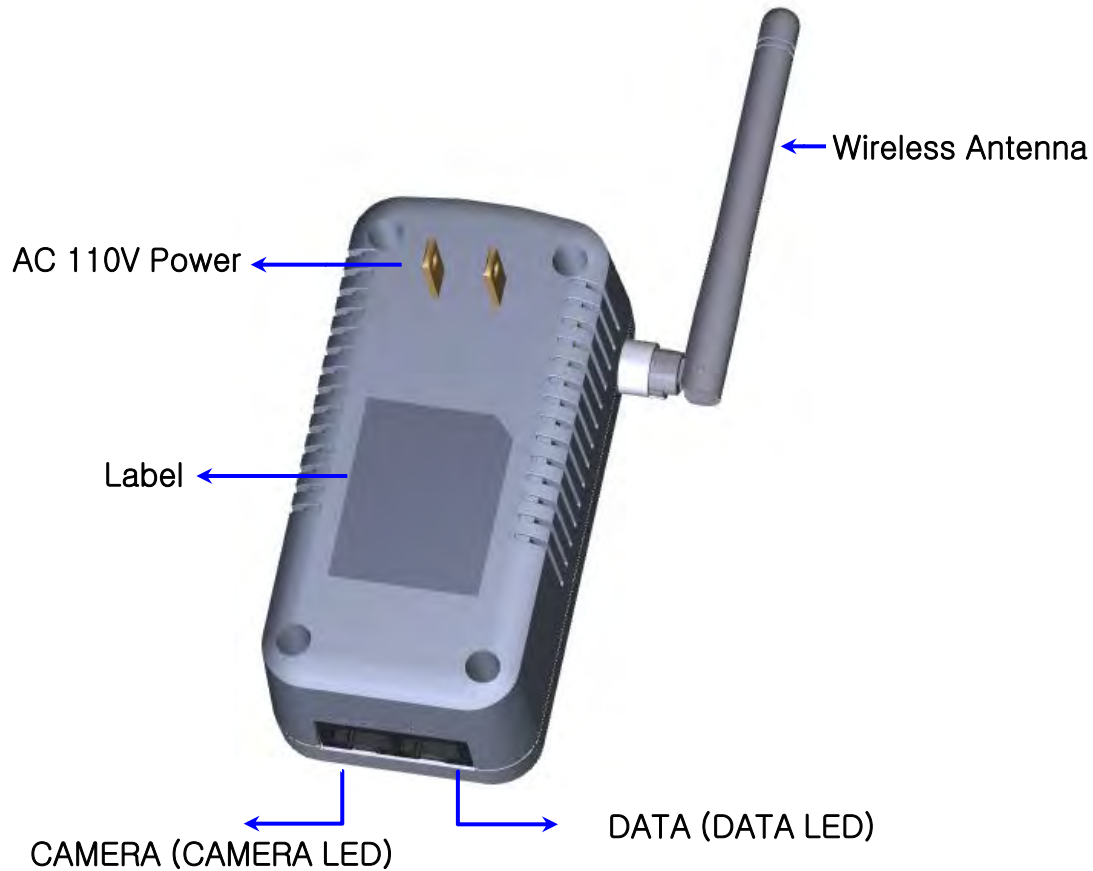


Fig 2. Back/side View

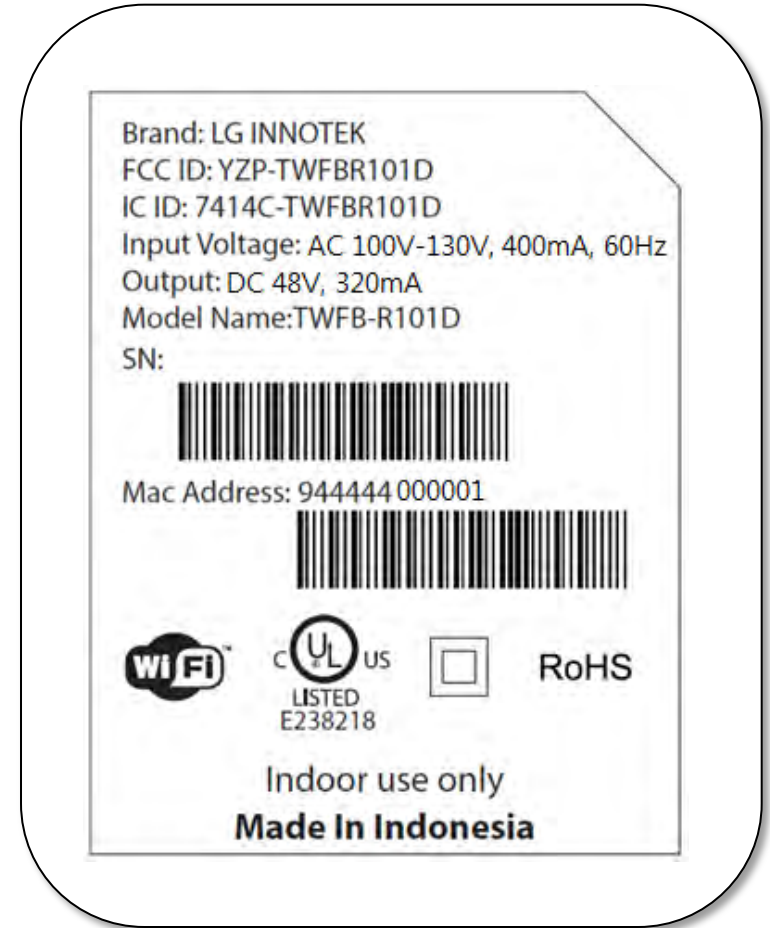


Fig 3. Label information

## 2. Installation Guide

### 1. Log in connection Camera & Wi-Fi Bridge

- 1) Make sure that your camera is connected to the Wi-Fi Bridge **CAMERA port** with an Ethernet cable(wired)
- 2) Turn on the Wi-Fi Bridge and verify the following
  - The power LED is On.
  - The CAMERA LED is on for the LAN port that is connected to your Power device camera.
  - The WLAN LED is blinking.
- 3) Launch internet browser and enter <http://172.19.1.254> in the address field.  
You are prompted to login;

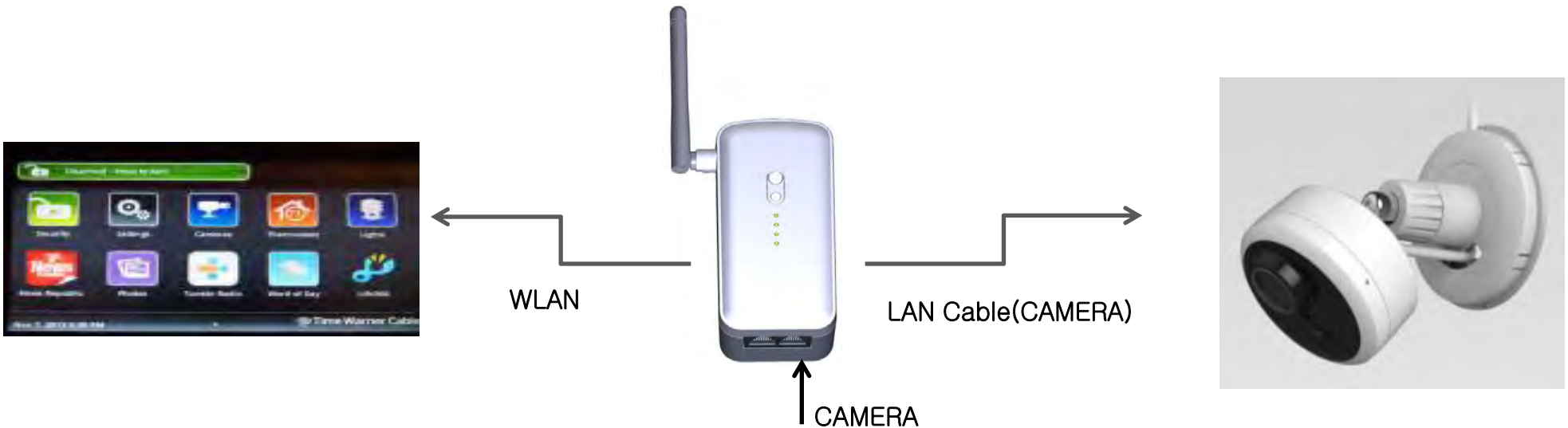


Fig 4. Login connection

## 2. Log in to the PoE

1) After entering <http://172.19.1.254> , you can show Realtek WLAN AP webserver.

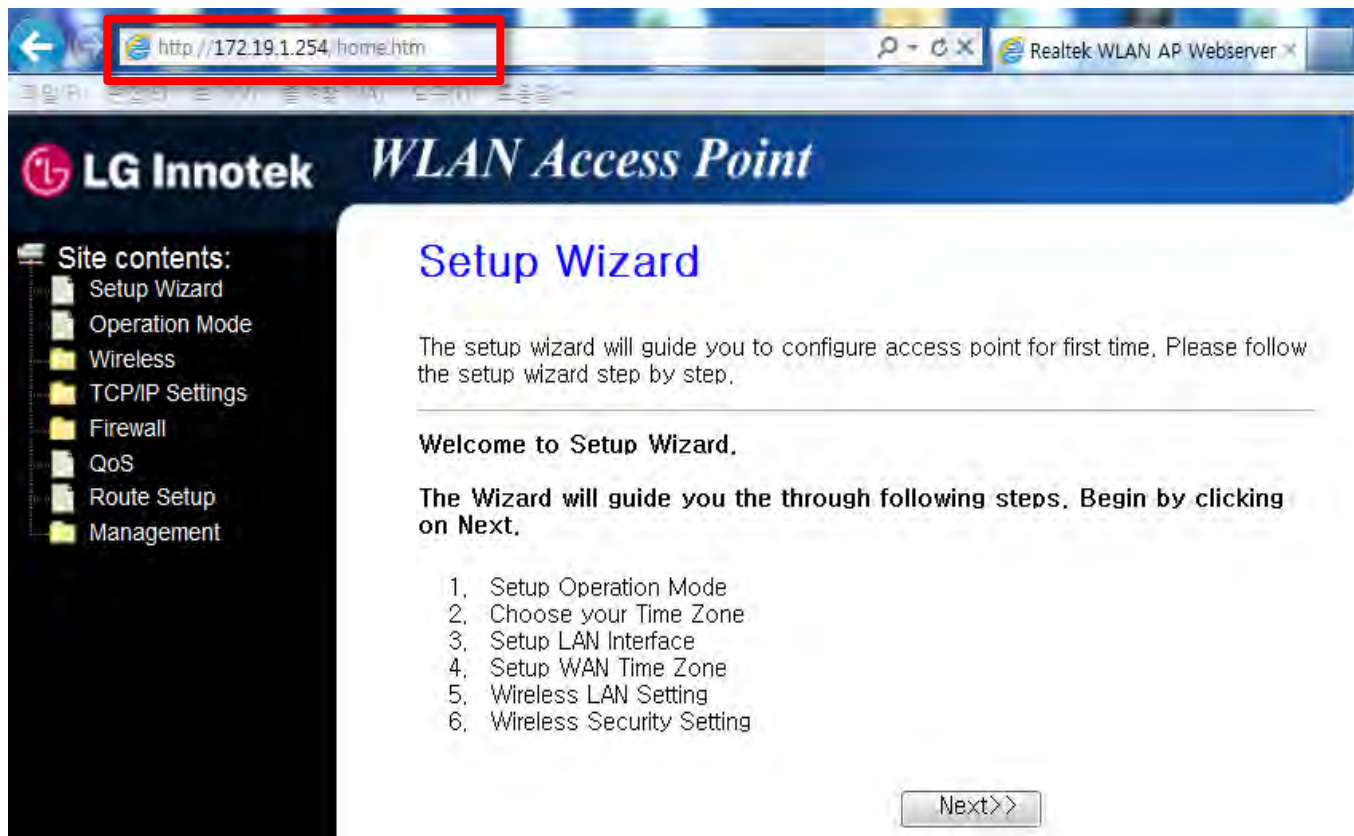


Fig 5. Realtek WLAN webserver

### 3. Wireless Site Survey

- 1) Please click "Wireless" in the webserver.
- 2) Please click "Site Survey" in the webserver( ①, ②), to fine AP list

The screenshot shows the LG Innotek WLAN Access Point webserver interface. The browser address bar displays `http://172.19.1.254/home.htm`. The page title is "WLAN Access Point" and the main heading is "Wireless Site Survey". The left sidebar contains a tree view of site contents, with "Wireless" and "Site Survey" highlighted by red boxes and labeled "Click ①". The main content area includes a description of the site survey tool and a "Site Survey" button, which is also highlighted by a red box and labeled "Click ②". Below the button is a table with the following columns: SSID, BSSID, Channel, Type, Encrypt, Signal, and Select. The table currently shows "None" in the SSID column.

SSID	BSSID	Channel	Type	Encrypt	Signal	Select
None						

Fig 6. Wireless Site Survey

#### 4. AP Connection

- 1) After "Site Survey", you can show AP lists.
- 2) Please select wanted SSID(AP Name) and click "Next"

The screenshot shows the 'Wireless Site Survey' page of the LG Innotek WLAN Access Point web interface. The page title is 'Wireless Site Survey' and it includes a description: 'This page provides tool to scan the wireless network. If any Access Point or IBSS is found, you could choose to connect it manually when client mode is enabled.' Below the description is a 'Site Survey' button. A table lists the detected wireless networks with columns for SSID, BSSID, Channel, Type, Encrypt, Signal, and Select. The 'Select' column contains radio buttons for each entry. The 'Next>>' button is located at the bottom right of the table area, with a red arrow pointing to it and the text 'Click' next to it.

SSID	BSSID	Channel	Type	Encrypt	Signal	Select
NETGEAR04-2G	84:1b:5e:41:f2:3f	6 (B+G)	AP	no	80	<input type="radio"/>
iptime(QE)	00:26:66:6e:16:14	11 (B+G+N)	AP	no	40	<input type="radio"/>
IpTime3_2G	64:e5:99:22:1a:ac	11 (B+G+N)	AP	WPA-PSK/WPA2-PSK	36	<input type="radio"/>
WiFi_Test_2G	f8:d1:11:2c:eb:bc	6 (B)	AP	no	24	<input checked="" type="radio"/>
Apple Network 68029d	68:a8:6d:68:02:9d	11 (B+G+N)	AP	no	24	<input type="radio"/>
Endo_Lighting_GW_361021	00:11:22:36:10:21	1 (B+G)	AP	WPA-PSK	20	<input type="radio"/>
Endo_Lighting_GW_90ACB9	10:08:c1:90:ac:b9	1 (B+G)	AP	WPA-PSK	16	<input type="radio"/>

Fig 7. SSID Selection

- 3) Please click "Connect"
- 4) After "Connect" click, You can show "Please Wait" message
- 5) It will be connected. Please click "Reboot Later"
- 6) Finally, Please close your web browser.

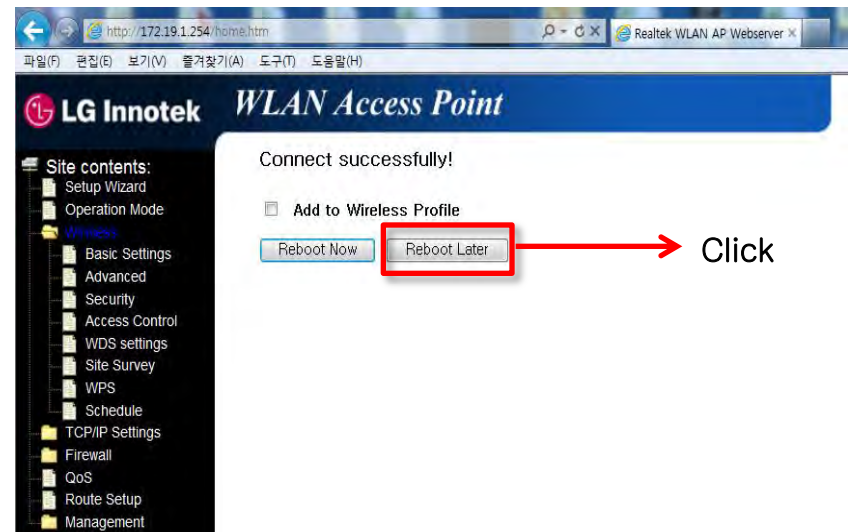
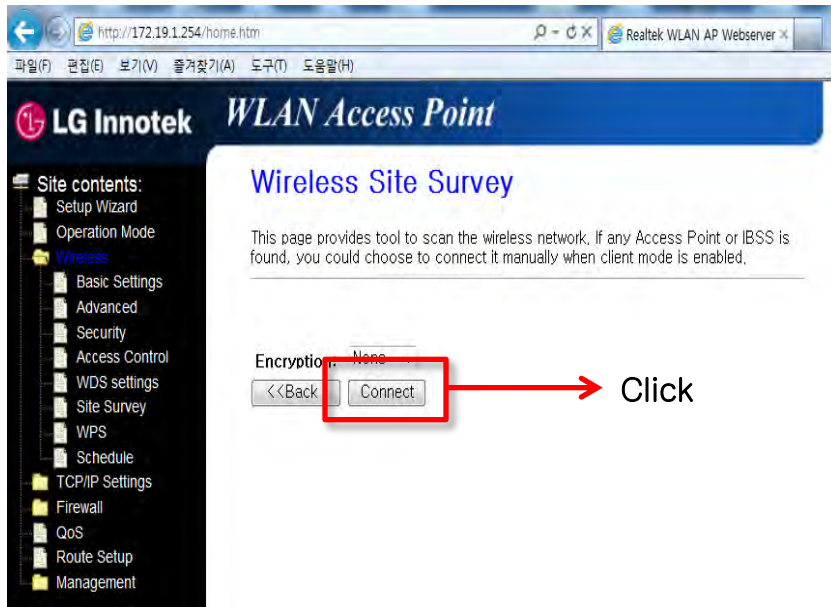


Fig 8. SSID Connection



# 3. Regulation Information

## INFORMATION TO THE USER

This equipment has been tested and found to comply with the limits for a Class B digital device, pursuant to part 15 of the FCC Rules. These limits are designed to provide reasonable protection against harmful interference in a residential installation. This equipment generates, uses and can radiate radio frequency energy and, if not installed and used in accordance with the instructions, may cause harmful interference to radio communications.

However, there is no guarantee that interference will not occur in a particular installation. If this equipment does cause harmful interference to radio or television reception, which can be determined by turning the equipment off and on, the user is encouraged to try to correct the interference by one or more of the following measures:

- Reorient or relocate the receiving antenna.
- Increase the separation between the equipment and receiver.
- Connect the equipment into an outlet on a circuit different from that to which the receiver is connected.
- Consult the dealer or an experienced radio/ TV technician for help.

This device complies with part 15 of the FCC Rules. Operation is subject to the following two conditions:

- (1) This device may not cause harmful interference, and
- (2) This device must accept any interference received, including interference that may cause undesired operation.

Caution: Any changes or modifications to the equipment not expressly approved by the party responsible for compliance could void user's authority to operate the equipment.

This appliance and its antenna must not be co-located or operation in conjunction with any other antenna or transmitter.

A minimum separation distance of 20 cm must be maintained between the antenna and the person for this appliance to satisfy the RF exposure requirements.

## 4. Regulation Information (French)

---

Le présent appareil est conforme aux CNR d'Industrie Canada applicables aux appareils radio exempts de licence.  
L'exploitation est autorisée aux deux conditions suivantes:

- (1) l'appareil ne doit pas produire de brouillage, et
- (2) l'utilisateur de l'appareil doit accepter tout brouillage radioélectrique subi, même si le brouillage est susceptible d'en compromettre le fonctionnement.

Cet équipement doit être installé et utilisé avec un minimum de 20 cm de distance entre la source de rayonnement et votre corps.

# 5. Appendix

## 1. WPS Function

- You can use WPS to connect AP without any password(WPA or WPA2).
  - ① Push AP' WPS button.
  - ② Push PoE' WPS Button(During 3 secs).
  - ③ When try to connect AP, WLAN LED is pulsing RED.
  - ④ After connect AP, WLAN LED is blinking Yellow Green.

→ If you didn't push PoE' WPS Button within 2min, It will be disconnected.
- \* Notice
  - If you want to use WPS function, your AP must have WPS function.



Fig 9. WPS / Reset

## 2. Reset Function

- If you push RESET Button for 3secs, the PoE will restart.

## 3. Factory Default Setting

- Reset button can also be used to clear all data and restore the factory default settings.
  - ① Press the Reset button(during 10 secs).
  - ② Release the Reset button.

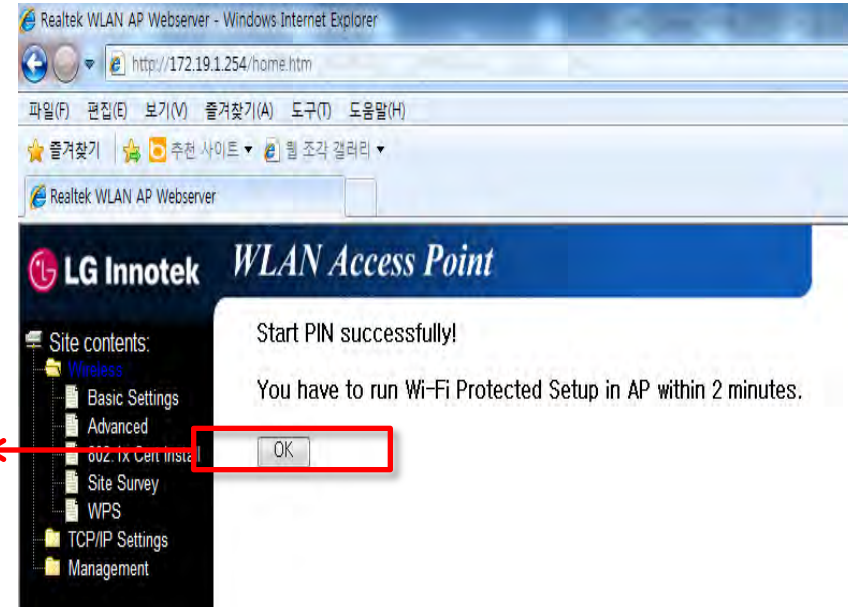
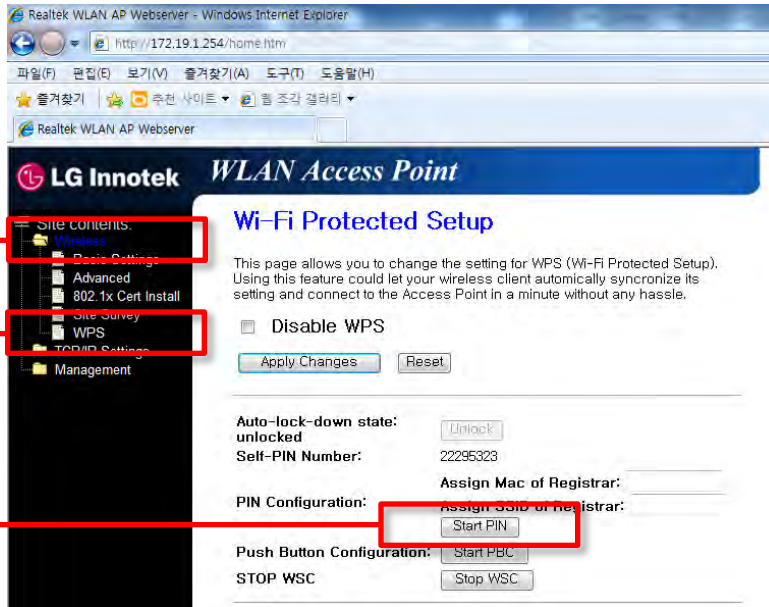
→ PoE will return to the factory configuration settings shown in the following table.

Feature	Default settings
User name (case-sensitive) printed on product label	admin
Password (case-sensitive) printed on product label	xxxxx
Static IP address	172.19.1.254
Ethernet MAC address	See bottom label.
Subnet mask	255.255.255.0
DHCP client	Disabled

Table 2. PoE default configuration settings

#### 4. PIN mode WPS Function of webserver

- ① Please click "Wireless" in the webserver.
- ② Please click "WPS" in the webserver.
- ③ If you use PIN mode WPS, first input Self-PIN Number to AP. After that click Start PIN.
- ④ Click ok.



## 5. PIN mode WPS Function of webserver

- ① Please click "Wireless" in the webserver.
- ② Please click "WPS" in the webserver.
- ③ If you use PBC mode WPS in webserver, first push the WPS button of AP. After that click Start PBC.
- ④ Click ok.

