



SIMPLE MANUAL

# Wireless Sound Bar

To view the instructions of advanced features,  
visit <http://www.lg.com> and then download Owner's Manual.  
Some of the content in this manual may differ from your unit.

MODEL

SH4

SHC4



\* M F L 6 9 3 9 2 8 9 7 \*

**WARNING:** This product contains chemicals known to the State of California to cause cancer and birth defects or other reproductive harm. ***Wash hands after handling.***

### **FCC Compliance Statement**

This equipment has been tested and found to comply with the limits for a Class B digital device, pursuant to Part 15 of the FCC Rules. These limits are designed to provide reasonable protection against harmful interference in a residential installation. This equipment generates, uses, and can radiate radio frequency energy and, if not installed and used in accordance with the instructions, may cause harmful interference to radio communications. However, there is no guarantee that interference will not occur in a particular installation. If this equipment does cause harmful interference to radio or television reception, which can be determined by turning the equipment off and on, the user is encouraged to try to correct the interference by one or more of the following measures:

- Reorient or relocate the receiving antenna.
- Increase the separation between the equipment and the receiver.
- Connect the equipment to an outlet on a circuit different from that to which the receiver is connected.
- Consult the dealer or an experienced radio/TV technician for help.

This device complies with part 15 of the FCC Rules.

Operation is subject to the following two conditions: (1) this device may not cause harmful interference and (2) this device must accept any interference received, including interference that may cause undesired operation of the device. Any changes or modifications in construction of this device which are not expressly approved by the party responsible for compliance could void the user's authority to operate the equipment.

**FCC RF Radiation Exposure Statement :** This equipment complies with FCC radiation exposure limits set forth for an uncontrolled environment. This transmitter must not be co-located or operating in conjunction with any other antenna or transmitter.

This equipment should be installed and operated with minimum distance 20 cm (7.8 inches) between the antenna and your body. Users must follow the specific operating instructions for satisfying RF exposure compliance.

### **FCC Radio Frequency Interference Requirements :**

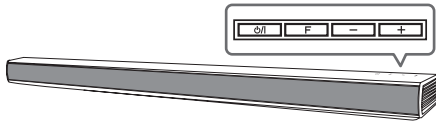
High power radars are allocated as primary users of the 5.25 to 5.35 GHz and 5.65 to 5.85 GHz bands. These radar stations can cause interference with and/or damage this device. This device cannot be co-located with any other transmitter.

### **Responsible Party :**

LG Electronics USA, Inc.  
1000 Sylvan Ave  
Englewood Cliffs, NJ 07632  
Tel: 1-800-243-0000



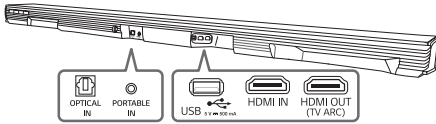
## Front Panel



The buttons are located on the rear panel.

- Standby / On
- Selects Function
- Adjusts Volume

## Rear Panel



- OPTICAL IN** ..... Connect to an Optical device
- PORTABLE IN** ..... Connect to a Portable device
- USB port** ..... Connect to a USB device
- HDMI IN** ..... Connect to HDMI out on a device
- HDMI OUT (TV ARC)** ..... Connect to a TV

## 1 Subwoofer Connection

Place the wireless subwoofer near the speaker and follow steps below.

- 1 Connect the power cord of wireless subwoofer to the outlet.
- 2 Turn on the main unit. :  
The sound bar and wireless subwoofer will be **automatically** connected. The subwoofer's green LED turns on.

## Subwoofer Connection Manually

- 1 Reset the Subwoofer  
If the green LED on the subwoofer blinks rapidly, skip this step and go to 2
  - Press and hold **Pairing** button for 5 seconds.
  - The LED lights up alternately in red and green.
  - Unplug the power cord. After the LED turns off completely, plug in the power cord again.

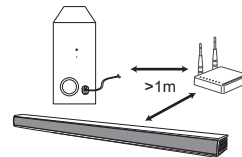
When the reset is completed, the subwoofer's green LED blinks rapidly.

- 2 Reset the sound bar
  - Adjust volume to minimum until the red LED on the sound bar lights up for a while.
  - Press and hold (Mute) button on the remote control for 3 seconds.
  - The red LED on the sound bar blinks rapidly.
  - Turn the sound bar's power off and on while the subwoofer's green LED blinks.

When the connection is completed, you can see the green LED on the subwoofer.



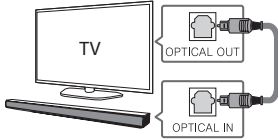
Keep the sound bar and the subwoofer away from the following (ex. wireless router, microwave oven, etc.) over 1m (3.3 ft) to prevent wireless interference.



Connect the speaker and TV using Optical (A) or HDMI ARC (B).

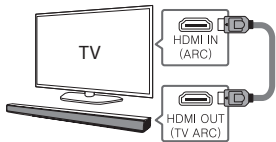
### A Optical connection

- 1 Connect the speaker to the TV using Optical cable.
- 2 Set up [External Speaker (Optical)] on your TV setting menu.



### B HDMI(ARC) Connection

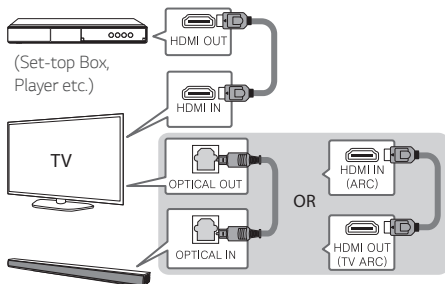
- 1 Connect the speaker to the TV using HDMI cable.
- 2 Set up [External Speaker (HDMI ARC)] on your TV setting menu.



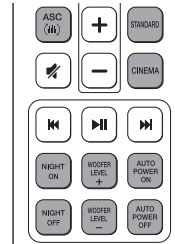
HDMI connection is unavailable if your TV does not support HDMI ARC.

## Additional Device Connection

- 1 Connect to the external device as follows.



- 2 Set the input source by pressing **F** on the remote control or unit repeatedly.



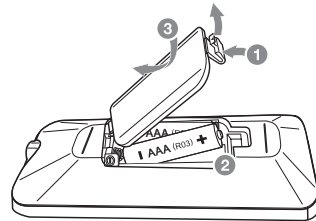
**ASC/STANDARD/CINEMA:** Selects a sound effect mode.

**NIGHT ON/OFF:** Turns down the volume at night.

**WOOFER LEVEL +/-:** Synchronizes the audio and video.



**AUTO POWER ON/OFF:** Automatically turns on by an input source.

## Replacement of battery



## Additional Information

### Specification

Power consumption	22 W
	Networked standby : 0.5 W (If all network ports are activated.)
AC adapter	<ul style="list-style-type: none"><li>• Model : DA-38A25</li><li>• Manufacturer : Asian Power Devices Inc.</li><li>• Input : 100 - 240 V ~ 50 - 60 Hz 1.2 A</li><li>• Output : 25 V  1.52 A</li></ul>
Dimensions (W x H x D)	Approx. 890 mm x 53 mm x 85 mm (35.0 inch x 2.1 inch x 3.3 inch), Without foot
Net Weight	Approx. 2.34 kg (5.2 lb)
Bus Power Supply (USB)	5 V  500 mA
Amplifier (Total RMS Output power)	300 W

Design and specifications are subject to change without notice.

### How to disconnect the wireless network connection or the wireless device

Set up the AUTO POWER ON/OFF function to off and turn off the unit.







**LG Customer Information Center**

1-800-243-0000	USA, Consumer
1-888-865-3026	USA, Commercial

**Register your product Online!**

[www.lg.com](http://www.lg.com)

Printed in China