

Rechargeable 2.4GHz DX-1 MICRO DRONE

INTRODUCTION

Congratulations on your purchase of the Sharper Image Rechargeable 2.4 GHz DX-1 Micro Drone. Get ready to soar to new heights. Master the art of drone flying with remote control maneuverability. This lightweight micro drone will provide hours of fun,

SPECIFICATIONS

Drone Battery: 160 mAh Li po
Remote Controller Battery: 2 x 1.5V AAA
Charging Time: Approximately 40 minutes
Maximum Recommended Altitude: 65 ft.

TABLE OF CONTENTS

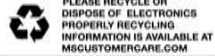
General Warnings Page 1
Contents and Remote Battery Installation Page 2
Charging LiPo and Drone Storage Page 3
Blade Guard Installation Page 4
Remote Control and Drone Overview Page 5
Operating Drone Page 6
Modes and Replacing Propellers Page 7
Troubleshooting and FCC Warning Page 8

Rechargeable 2.4GHz DX-1 MICRO DRONE

READ ALL WARNINGS AND PRECAUTIONS BEFORE USE

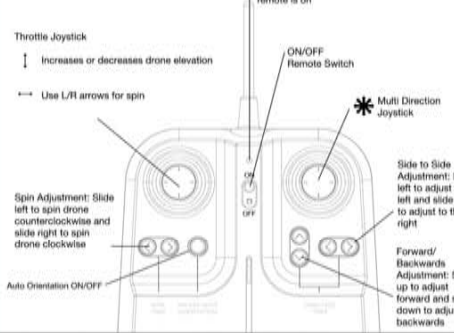
SAFETY WARNINGS:

- Not recommended for children under 12 years of age. As with all electrical products, precaution should be observed during handling and use to reduce the risk of electrical shock.
Adult supervision is required at all times.
Before each use, an adult should review the product and battery to determine that no damage or hazards exist.
DO NOT TOUCH SPINNING PROPELLERS
Do not allow anything to intentionally make contact in any way with spinning propellers.
Prevent contact with spinning blades by turning off remote prior to handling drone.
Use caution and pay attention to your surroundings while operating drone.
Do not fly drone into animals, people, or inanimate objects.
Keep drone away from power lines, buildings, trees, public areas, and any other potentially hazardous areas.
Do not operate in rain, heavy wind, and/or any type of severe weather.
Do not land drone on wet surfaces.
Never touch or allow others to touch drone while it is flying.
Always turn drone off when it is not in use.
Always fly drone in large open areas.
Never fly drone above or near people, sudden changes in wind or other conditions could lead to unexpected crashes.
Always use caution when flying drone vehicles, obey relevant laws, respect the privacy and property rights of others.
The drone shall never be modified or used for anything except its intended purpose.

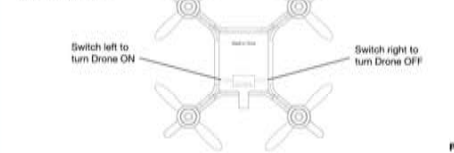


Rechargeable 2.4GHz DX-1 MICRO DRONE

REMOTE CONTROL OVERVIEW



DRONE OVERVIEW



Rechargeable 2.4GHz DX-1 MICRO DRONE

OPERATING DRONE

Step 1 - Pre Flight Checklist
1. Read all warnings and instructions
2. Install remote batteries, page 2
3. Make sure that drone and remote are powered off
4. Install Blade Guards, page 4.
5. Charge batteries, page 3.

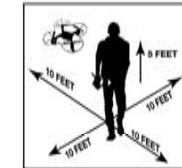
Step 2 - Choosing a location
Drone is designed to be flown indoors only
Always make sure you have enough space to fly drone
Always follow warnings, page 1

Step 3 - Starting Drone
1. Making sure your remote is off, slide drone switch to ON. Drone lights will begin to flicker
2. Choose a flat even surface and follow the diagram
3. Turn remote on. Bring the Throttle all the way up then bring it all the way down. Remote will beep and drone lights will flicker rapidly then turn on permanently once paired.
4. Drone is ready for flight.

Step 4 - Lift Off
1. Slowly and carefully bring the throttle up. Propellers will begin to spin and drone will begin to elevate. You can compensate for some of the drone drifting by using the Multi Directional Button or by following step 5. You may need to practice this step several times before successfully getting drone into the air.

Step 5 - Drone Begins to Drift
Follow this step if your drone begins to drift while take off or during flight
Drone drifts backwards: Slide the Forward/Backwards Adjustment up
Drone drifts forwards: Slide the Forward/Backwards Adjustment down
Drone drifts left: Slide the Side to Side Adjustment to the right.
Drone drifts right: Slide the Side to Side Adjustment to the left.
Drone spins clockwise (viewing drone from top): Slide the Spin Adjustment to the left.
Drone spins counter-clockwise (viewing drone from top): Slide the Spin Adjustment to the right.

Always turn off remote prior to retrieving or picking up drone. This will help you avoid activating propellers.



Step 6 - Operating Drone in Flight
The drone range is approximately 100 feet
Read and be aware of all warnings found on page 1.
Maintain your desired elevation by using the Throttle
Use the Throttle joystick in a circle motion to spin the drone
Use the Multi Directional Joystick to move forwards, backwards, and side to side
Review step 5 if your drone begins to drift

Rechargeable 2.4GHz DX-1 MICRO DRONE

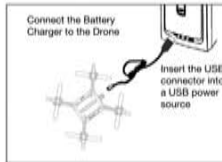
CHARGING BATTERY

Note: The Battery Charger will light up when it is charging the battery and turn off when the battery is fully charged. Charge time is approximately 30 minutes.

Turn off the drone before charging.

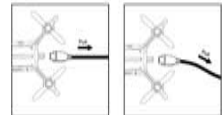
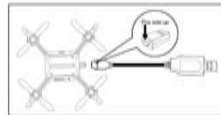
Carefully connect the Drone to USB charging cord as the connector, Connector is delicate and must be handled with care.

Connect USB connector to power source.

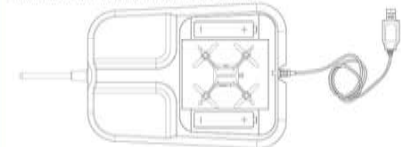


Please note the plug direction when plugging in the drone:

Carefully unplug the charging cord from the Drone:



Drone can be charged and stored inside of controller:



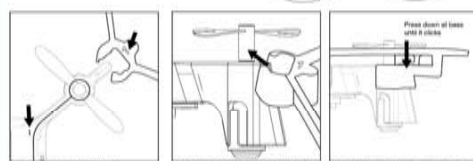
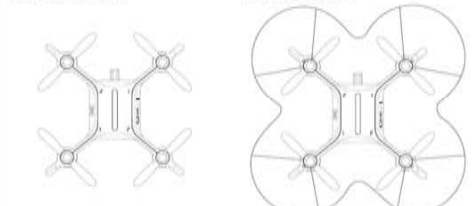
Rechargeable 2.4GHz DX-1 MICRO DRONE

BLADE GUARD INSTALLATION

Blade guards should be installed prior to flying the drone. The blade guards will help protect your drone and bystanders from the spinning propellers. They will protect the propellers if the drone is dropped or has a rough landing. The blade guards will also allow you to see the drone while it is in flight. Please see below on how to properly install the blade guards.

BEFORE INSTALLATION:

AFTER INSTALLATION:



- 1. Identify the number on the blade guard and match it to the number on the Drone.
2. Carefully align the propeller so it is horizontal to the leg of the Drone.
3. Coming from below, angle the blade guard to the propeller post.
4. Carefully clamp the blade guard around the propeller post. Press down on the base until it clicks.
5. Repeat on three remaining corners.

Rechargeable 2.4GHz DX-1 MICRO DRONE

CUSTOMER SERVICE

(800) 374-2744

TIPS

- Do not crash drone into wall or dirt. Drone gears may become chipped
When first learning to fly, practice lifting off and hovering
Stay aware of your surroundings and buildings
Always Press Throttle all the way down after crashing or when something gets stuck in propellers
Never fly drone above or near people. Sudden changes in wind or other conditions could lead to unexpected crashes.
Always use caution when flying drone vehicles, obey relevant laws, respect the privacy and property rights of others.
The drone shall never be modified or used for anything except its intended purpose.

WARNING: Changes or modifications to this unit not expressly approved by the party responsible for compliance could void the user's authority to operate the equipment.

TROUBLESHOOTING:

When remote switch is turned on, the remote light does not illuminate:
1) Check that batteries in the remote are installed correctly OR
2) Replace with new batteries

When the remote is switched on, the remote LED is flashing and remote is beeping:
1) Remote batteries are low; replace them with new batteries

Drone and remote properly pair, but the drone will not fly:
1) Drone Li-Po needs charging. Use charging cable to connect the drone to power source.

After turning the drone, the drone light is very unstable and cannot fly properly:
1) One or more blades are most likely damaged
2) Turn off the drone and remote.
3) Replace with the proper number replacement blade and try flying again.

After impact, the drone is unstable:
1) Put the left remote control lever to the left bottom and put the right remote control lever to the right bottom at the same time which connected to the drone diagram by right.
2) If the above does not resolve the issue, reboot the drone and controller and pair again.

Remote Controller and Drone can not be paired:
1) Check Point! Remote Controller must be closest to Drone, not exceed 3 meters.

Note: If there are 2 sets of Drones within 4 meters for pairing, you must pair one successfully before pairing the second set.

This device complies with Part 15 of the FCC Rules. Operation is subject to the following two conditions: (1) this device may not cause harmful interference, and (2) this device must accept any interference received, including interference that may cause undesired operation.
FEDERAL TRADE COMMISSION
Consumer Information: This product is subject to recall. For more information, please visit www.federaltrade.gov or call 1-800-999-8332.
FEDERAL RESERVE
Product in China