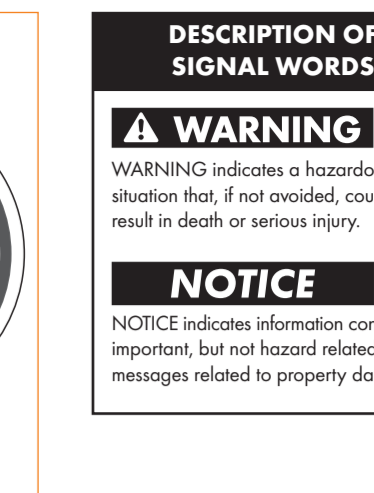
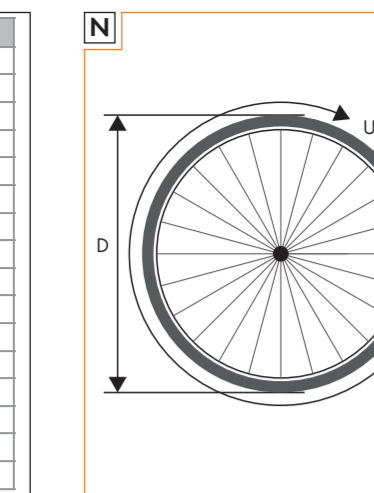
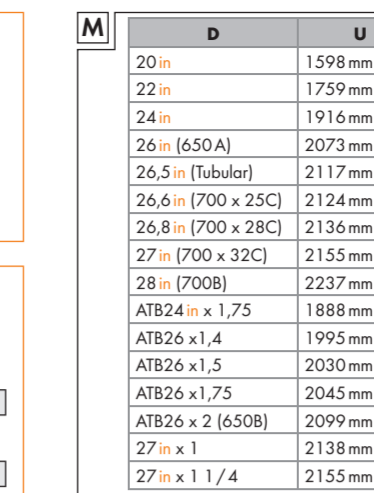
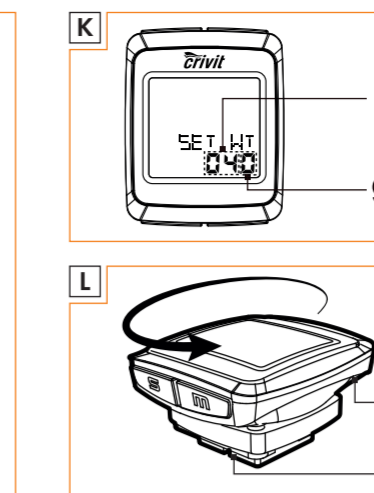
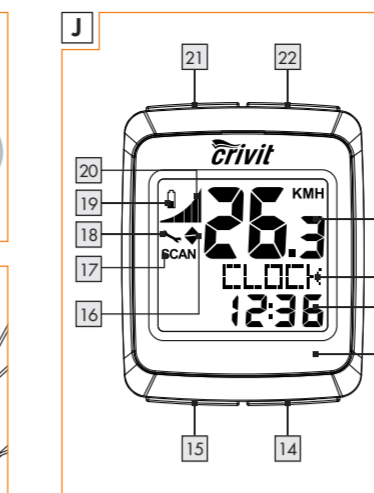
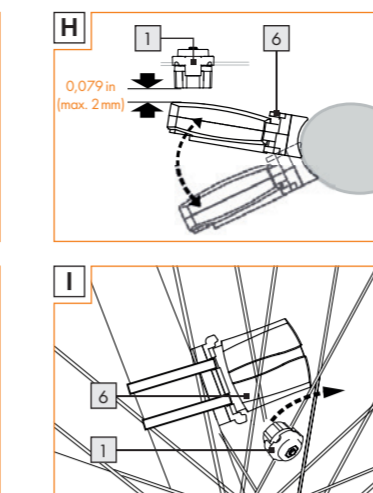
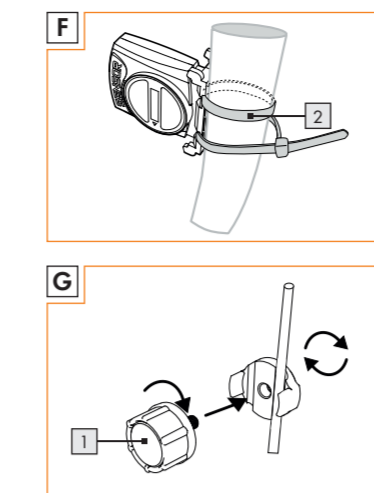
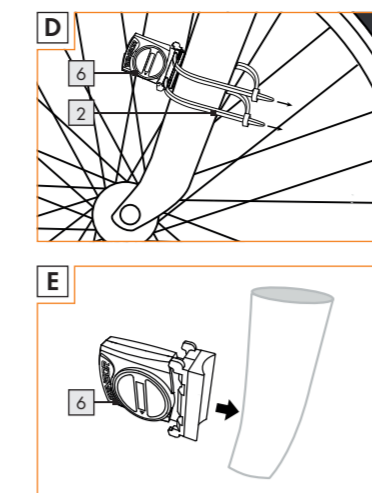
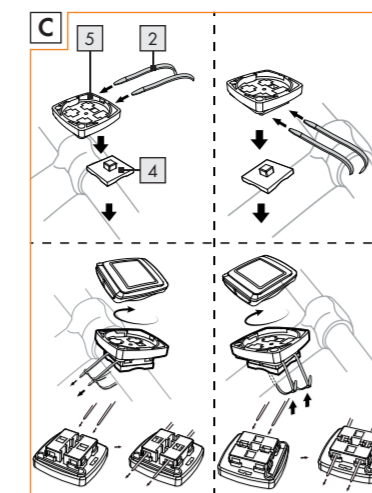
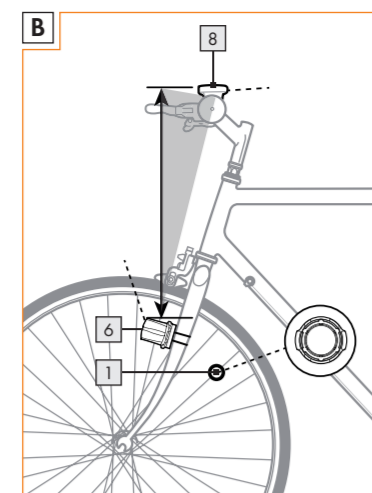
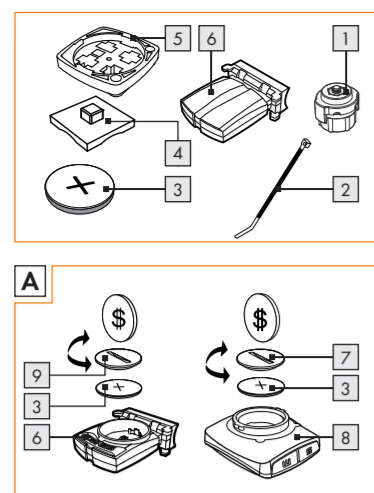


**BIKE COMPUTER / COMPUTADORA PARA BICICLETA**

**BIKE COMPUTER**  
Operation and Safety Notes

**COMPUTADORA PARA BICICLETA**  
Instrucciones de utilización y de seguridad

IAN 286004



**DESCRIPTION OF SIGNAL WORDS**

**WARNING**  
WARNING indicates a hazardous situation that, if not avoided, could result in death or serious injury.

**NOTICE**  
NOTICE indicates information considered important, but not hazard related (e.g. messages related to property damage).

**CUSTOMER SERVICE**

Call customer service at **(844) 543-5872**

Visit the Website Customer Service Platform at **www.lidl.com/contact-us**

Visit a LIDL store for further assistance.

**IAN 286004**

Please have your IAN number ready.

**Bike Computer**

**Introduction**

Congratulations on your purchase. You have selected a quality product. The instructions for use are a part of the product. They contain important information about the safety, use and disposal of the product. Before using the product, please learn about all the safety information and usage instructions. Only use the product as described and for the specified applications. If you lend the product to someone else, please also give all the instructions.

**Proper use**

The product is intended for use as a bike computer. Not for commercial use.

- Functions**
- Menu languages: GB, DE, FR, NL, IT, ES
  - Clock
  - Stopwatch
  - Temperature °C/°F
  - Memory function for min. and max. temperature
  - Current speed [0-62 mph (0-99.9 km/h)]
  - Average speed [0-62 mph (0-99.9 km/h)]
  - Maximum speed [0-62 mph (0-99.9 km/h)]
  - Speed comparison
  - Speed tendency
  - Trip timer (max. 9:59:59) (count backwards or forwards)
  - Odometer (count backwards or forwards)
  - Total odometer and total cycling time display
  - Calories
  - Fatburn
  - CO2 saving

- Description of parts**
- Magnet
  - Cable tie
  - Battery
  - Cushion for bike computer bracket
  - Bracket
  - Sensor
  - Bike computer's battery compartment cover
  - Bike computer
  - Sensor battery compartment cover
  - Bike computer
  - Function indicator
  - Secondary function value display
  - LC display
  - MODE button [M]
  - SET button [S]

- Technical data**
- Battery: 3 V **CR2032** (Direct current) (CR2032 button cell)
- Operating temperature: 0-122 °F (0-50 °C)
- IP44 (splash proof). Suitable for wet locations

- Included items**
- Bike computer
  - Bracket for bike computer
  - Cushion for bike computer bracket
  - Bracket with sensor
  - Magnet
  - Cable ties
  - Batteries 3 V **CR2032** (Direct current), type CR2032 button cell
  - 2 Spare seal ring for bike computer and sensor
  - 1 Operating instructions

**IMPORTANT SAFETY INSTRUCTIONS**

READ ALL INSTRUCTIONS. KEEP FOR FUTURE REFERENCE. IF PASSING THIS PRODUCT ON TO A THIRD PARTY ALSO INCLUDE ALL DOCUMENTS.

**WARNING**

This product is not intended for use by persons (including children) with reduced physical, sensory or mental capabilities, or lack of experience and knowledge, unless they have been given supervision or instruction concerning use of the product by a

person responsible for their safety. Children should be supervised to ensure that they do not play with the product.

**WARNING**

Changes or modifications to this product not expressly approved by the party responsible for

	D	U
20 in	1598 mm	
22 in	1759 mm	
24 in	1916 mm	
26 in (650 A)	2073 mm	
26.5 in (Tubular)	2117 mm	
26.6 in (700 x 25C)	2124 mm	
26.8 in (700 x 28C)	2136 mm	
27 in (700 x 32C)	2155 mm	
28 in (700B)	2237 mm	
AT824 x 1,75	1888 mm	
AT826 x 1,4	1995 mm	
AT826 x 1,5	2030 mm	
AT826 x 1,75	2045 mm	
AT826 x 2 (650B)	2099 mm	
27 in x 1	2138 mm	
27 in x 1 1/4	2155 mm	

interference in a residential installation. This product generates, uses and can radiate radio frequency energy and, if not installed and used in accordance with the instructions, may cause harmful interference to radio communications. However, there is no guarantee that

interference will not occur in a particular installation. If this product causes harmful interference to radio or television reception, which can be determined by turning the product off and on, the user is encouraged to try and correct the interference

- by one or more of the following measures:
- Reorient or relocate the receiving antenna.
  - Increase the separation between the equipment and receiver.
  - Connect the equipment into an outlet on a different circuit from the circuit the receiver is connected to.

- Consult the dealer or an experienced radio/TV technician for help.
- This product complies with part 15 of the FCC Rules. Operation is subject to the following two conditions:
  - (1) This product may not cause harmful interference, and
  - (2) this product must accept any interference received, including interference that may cause undesired operation.

**NOTICE**

Please note that the warranty does not cover damage arising from improper treatment,

non-observance of the operating instructions and safety advice or unauthorised use.

The RF Exposure Compliance distance is 20 mm.

**Safety instructions for batteries/rechargeable batteries**

**DANGER TO LIFE!** Keep batteries/rechargeable batteries out of reach of children. If accidentally swallowed seek immediate medical attention.

**DANGER OF EXPLOSION!** Never recharge non-rechargeable batteries. Do not short-circuit batteries and/or open them. Overheating, fire or bursting can be the result.

Never throw batteries/rechargeable batteries into fire or water. Do not exert mechanical loads to batteries/rechargeable batteries.

**Risk of leakage of batteries/rechargeable batteries**

- Avoid extreme environmental conditions and

temperatures, which could affect batteries/rechargeable batteries, e.g. radiators/direct sunlight.

Avoid contact with the skin, eyes and mucous membranes. In the event of contact with battery acid, thoroughly flush the affected area with plenty of clean water

and seek immediate medical attention.

**WEAR PROTECTIVE GLOVES!** Leaked or damaged batteries/rechargeable batteries can cause burns on contact with the skin. Wear suitable protective gloves at all times if such an event occurs.

In the event of a leakage of batteries/rechargeable batteries, immediately remove them from the product to prevent damage.

Only use the same type of batteries/rechargeable batteries. Do not mix used and new batteries/rechargeable batteries.

Remove batteries/rechargeable batteries if the product will not be used for a longer period.

**Risk of damage of the product**

- Only use the specified type of battery/rechargeable battery!
- Insert batteries/rechargeable batteries

according to polarity marks (+) and (-) on the battery/rechargeable battery and the product.

- Clean the contacts on the battery/rechargeable battery and in the battery compartment before inserting!
- Remove exhausted batteries/rechargeable batteries

batteries from the product immediately.

**SAVE THESE INSTRUCTIONS**

**Before use**

Remove the protective foil from the LCD display before first use.

Note: This product is not recommended to use with Ebikes. Interference from the motor may affect the performance of the product.

- Inserting the battery**
- To insert the battery proceed as shown in Fig. A.
  - To open the battery compartment cover, use a coin to assist you to turn the battery compartment cover in anti-clockwise direction. Make sure you fit the battery the right way round (polarity). This is shown on the back side of the product.
  - To close the battery compartment cover, use a coin to assist you to turn the battery compartment cover in clockwise direction.
- Scan the QR code with your smartphone and watch the video to find out how to assemble the product.
- Attaching the bike computer**
- To attach the product, proceed as shown in Figs. B to I.

Note: Make sure that the bike computer is attached with less than 27.56 in (70 cm) distance to the sensor. Fix the bike computer to the sensor within a 30° angle as shown in Fig. B.

**Preparing for use**

**Basic settings** Language > User profile > Wheel size > Unit of distance and speed > Age > Unit of weight > Weight > Time format > Time > CO2 saving > Servicing interval > Unit of temperature

**Key functions:** MODE button for selection / + button [M] or - button [S] for setting values / SET button for edit and confirmation

Note: The LC display comes on automatically approx. 2 seconds after the battery is inserted. You are immediately offered a choice of languages.

- Press the SET button [S] for edit.
- Press the + button [M] or - button [S] repeatedly until the desired language appears.
- Confirm your choice by pressing the SET button [S]
- Press the MODE button [M] to move to the user profile and press the SET button [S] for edit.
- Press the + button [M] or - button [S] repeatedly until the desired user profile (ADVANCE or EASY) appears.
- Confirm your choice by pressing the SET button [S]
- Press the MODE button [M] to move to the wheel size (SET WS). A four-digit number appears in the LC display. Now enter the tyre circumference of your wheel in mm. Press the SET button [S] for edit and press + button [M] or - button [S] repeatedly until the desired number appears as the first digit. Confirm your choice by pressing the SET button [S]

the desired number appears as the first digit. Confirm your choice by pressing the MODE button [M]. Repeat this process for the remaining digits.

Confirm your choice by pressing the SET button [S]

Note: You can calculate your tyre circumference (U) by multiplying your tyre diameter (D) by 3.1416 (Fig. M). The list (Fig. N) contains the tyre diameters (U) of the most common tyre diameters (D).

- Press the MODE button [M] to move to the unit of distance and press the SET button [S] for edit.
- Press the + button [M] or - button [S] repeatedly until SET KM or SET MI appears in the LC display.
- Confirm your choice by pressing the SET button [S]
- Press the MODE button [M] to move to the age. A two-digit number appears in the LC display. Press the SET button [S] for edit and press the + button [M] or - button [S] repeatedly until the desired number appears as the first digit.

the desired number appears as the first digit. Confirm your choice by pressing the MODE button [M]. Repeat this process for the remaining digits.

- Confirm your choice by pressing the SET button [S]
- Press the MODE button [M] to move to the time format and press the SET button [S] for edit. Press the + button [M] or - button [S] repeatedly until SET 12 Hr or SET 24 Hr appears in the LC display.
- Confirm your choice by pressing the SET button [S]
- Press the MODE button [M] to move to the clock. A four-digit number appears in the LC display. Press the SET button [S] for edit and press the + button [M] or - button [S] repeatedly until the desired number appears as the first digit. Confirm your choice by pressing the MODE button [M]. Repeat this process for all the remaining digits.
- Confirm your choice by pressing the SET button [S]

Confirm your choice by pressing the SET button [S]

Press the MODE button [M] to move to the servicing interval. A three-digit number appears in the LC display. Press the SET button [S] for edit and press the + button [M] or - button [S] repeatedly until the desired number of units of distance to your next intended bicycle servicing (servicing interval indicator) appears in the LC display. Confirm your choice by pressing the MODE button [M]. Repeat this process for all the remaining digits.

Note: You have the choice of 0-620.75 miles (0-999) or miles. After the setting is confirmed, the bike computer will count the trip distance. When the servicing interval indicator shows on LC display, you need to check the condition of your bike (wear, adjustment of brakes, etc.). Then press the down button [S] to reset the service interval and this indicator to disappear. The bike computer will start counting the trip distance again.

- Confirm your choice by pressing the SET button [S]
- Press the MODE button [M] to move to the temperature and press the SET button [S] for edit. Press the + button [M] or - button [S] repeatedly until the desired number of units of temperature and press the SET button [S] for edit. Press the + button [M] or - button [S] repeatedly until the desired number of units of temperature appears as the first digit. Confirm your choice by pressing the MODE button [M]. Repeat this process for all the remaining digits.
- Confirm your choice by pressing the SET button [S]

You have now completed the basic settings. If you want to change the basic setting data, follow the steps in "Resetting the bike computer" section and reset all basic setting data again.

**Connect the bike computer and sensor**

Use the magnet to trigger the sensor. The speed tendency indicator will show a graph to indicate a successful connection. Now the bike computer is ready for use. If connection fails, follow the steps in "Changing the batteries" section and reset all basic setting data again.

Confirm your choice by pressing the SET button [S]

Press the MODE button [M] to move to the unit of temperature and press the SET button [S] for edit. Press the + button [M] or - button [S] repeatedly until the desired number of units of temperature and press the SET button [S] for edit. Press the + button [M] or - button [S] repeatedly until the desired number of units of temperature appears as the first digit. Confirm your choice by pressing the MODE button [M]. Repeat this process for all the remaining digits.

any vibration made to reactivate the computer. The function indicator shows the current mode.

- Press the + button [M] or MODE button [M] repeatedly to page through the various modes.
- Press the SET button [S] to change into the secondary function for any function.
- Press the SET button [S] and keep it pressed to call or reset up any saved values.

**The bike computer has the following functions:**

ADVANCE mode: CLOCK > TOTALODO > TOTALT.M > TRIPDIST > MAXSPEED > AVGSPEED > TRIPTIME > TEMP > STPWATCH > CAL RATE > CALORIE > FAT-BURN > CO2 KG > KM+/- > TIME+/- > SCAN

EASY mode: Press the MODE button [M] you can choose function display. TRIPDIST > MAXSPEED > AVGSPEED > TRIPTIME

**Using functions**

Note: All the functions and secondary functions are described in the following list.

CLOCK: Displays the time

- Press the SET button [S] and keep it pressed for 3 seconds to access the time settings.

TOTALODO: Total odometer

- Press the SET button [S] and keep it pressed for 3 seconds to access the wheel size settings, total distance and servicing interval.

TOTALT.M: Total time cycling

- Press the SET button [S] and keep it pressed for 3 seconds to make changes to the saved total time cycling.

TRIPDIST: Trip distance

- Press the SET button [S] and keep it pressed for 3 seconds to reset the trip distance, the average speed and the trip time displays to 0.

MAXSPEED: Maximum speed

**Cleaning and care**

- Do not use any liquids or cleaning agents for cleaning. Otherwise there is a risk of damaging the product.
- The product should only be cleaned on the outside with a soft, dry cloth.

**Maintenance**

- Remove the battery when the product will not be used for longer period of time.
- Check regularly the cable and components for any damage and safe fit.

- Press the SET button [S] and keep it pressed for 3 seconds to reset the maximum speed display to 0.
- AVGSPEED: Average speed
- Press the SET button [S] and keep it pressed for 3 seconds to reset the average speed display to 0.
- TEMP: Thermometer
- Press the SET button [S] and keep it pressed for 3 seconds to switch between °C and °F.
- Press the SET button [S] to display the highest temperature (HI) measured so far.
- Press the SET button [S] again to display the lowest temperature (LO) measured so far.
- Press the SET button [S] and keep it pressed while the higher or lowest temperature is displayed to switch back to the current temperature to reset the saved data.
- STPWATCH: Stopwatch
- Press the SET button [S] to start the stopwatch.

- Press the SET button [S] again to stop the stopwatch.
- Press the SET button [S] and keep it pressed for 3 seconds to reset the stopwatch to 0.
- CALORIE: Current calorie consumption
- CALORIE: Calorie meter
- Press the SET button [S] and keep it pressed for 3 seconds to reset the calorie counter to 0.
- FAT BURN: Fat burning in grams
- Press the SET button [S] and keep it pressed for 3 seconds to reset the fat burning value to 0.
- CO2 KG: CO2 Saving
- Press the SET button [S] and keep it pressed for 3 seconds to access the CO2 saving reference value.
- KM: Odometer
- Press the SET button [S] and keep it pressed for 3 seconds to change the odometer settings. The LC display shows the symbol for counting forwards or backwards (+ or - respectively) and 5-digit number.

counting forwards or backwards (+ or - respectively) and 5-digit number.

- Press the SET button [S] for edit.
- Press the + button [M] and - button [S] repeatedly until the desired symbol is shown.
- Press the MODE button [M] to move on to setting the distance on the odometer and press the + button [M] and - button [S] repeatedly until the desired number appears as the first digit. Repeat this process for all the remaining digits.
- Confirm your choice by pressing the SET button [S] and press the MODE button [M] back to current page.

TIME: Timer

- Press the SET button [S] and keep it pressed for 3 seconds to change the timer settings. The LC display shows the symbol for counting forwards or backwards (+ or - respectively) and 5-digit number.

- Press the SET button [S] enter the setting process. Press the + button [M] and - button [S] repeatedly until the desired symbol is shown.
  - Press the MODE button [M] to move on to setting the timer and press the + button [M] and - button [S] repeatedly until the desired number appears as the first digit. Repeat this process for all the remaining digits.
  - Confirm your choice by pressing the SET button [S] and press the MODE button [M] back to current page.
- SCAN: Scan
- Note: The scan mode automatically switches between the trip distance, highest speed, average speed and trip time display.
- Note: Refer to the section on "Basic settings" to see how you make or change settings.
- Note: To turn off the SCAN function, press the + button [M] to return to clock mode.

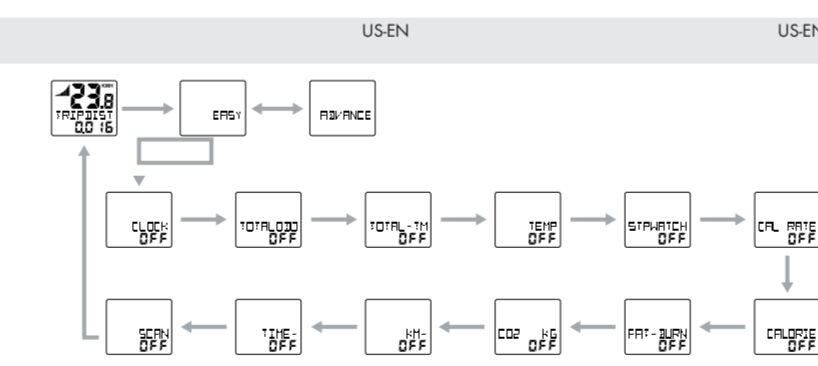
**CUSTOMIZE mode**

Apart from the ADVANCE and EASY mode, you can make your individual adjustments in the CUSTOMIZE mode (see procedure).

- Press the Set button [S] to enter the CUSTOMIZE mode.

Note: By repeatedly pressing the + button [M] and - button [S], you can toggle between the ADVANCE and EASY mode. In the EASY mode, press and hold the SET button [S]. Press the + button [M] and - button [S] to switch the settings on or off (e.g. time). Choose "On", to add the chosen adjustment to the EASY modes. Choose "Off", if you do not want to add the adjustments.

- Press the SET button [S] to confirm your entry. Repeat this process for another function.



**Using the backlight**

- Press the SET button [S] to switch on the backlight temporarily. The backlight automatically extinguishes after a short period.

**Resetting the bike computer**

- Press the MODE button [M] and + button [M] at the same time and keep them pressed until RESET appears in the LC display [S].
- Now press the SET button [S]. This allows you to adjust the previously set basic setting data (language, age, weight, time). The rest of the stored data will be deleted.

**Changing the batteries**

Note: The battery of the bike computer must be replaced when the battery state indicator appears on the LC display [S].

- Press the MODE button [M] and the SET button [S] at the same time and keep them pressed until the battery symbol and [S] appears in the LC display [S].
- To replace the battery, proceed as shown in figure A.
- To open the battery compartment cover, use a coin to assist you to turn the battery compartment cover in anti-clockwise direction. Take out the old battery and replace with a new battery. Make sure you fit the battery the right way round (polarity). This is shown inside the battery compartment.
- Adjust the sealing ring before inserting the battery.

To close the battery compartment cover, use a coin to assist you to turn the battery compartment cover in clockwise direction.

Press any button and keep it pressed to return to normal operating mode.

Note: Once the battery is removed, all stored data will be erased after approx. 20 seconds.

**Removing the bike computer from the bike**

- Turn the bike computer anticlockwise to detach the bike computer.
- Cut off the protruding tails of the cable ties with a suitable tool such as diagonal pliers.

**Troubleshooting**

Note: This product has delicate electronic components. Therefore interference may occur when it is near products which transmit radio signals.

Problem	Solution
Speed or distance are not displayed.	Adjust magnet and sensor correctly. Check that the battery is inserted with the poles arranged the right way round.
Display is black	The ambient temperature is too high or the bike computer was exposed to direct sunlight for too long. Remove product from direct sunlight and let it cool off for a while.
The LC display shows irregular symbols.	Remove battery and replace it again.

- If errors occur in the display, remove any such products from the vicinity of the product. In the case of such malfunctions, remove the battery briefly and then reinsert again.

**Disposal**

Dispose of the packaging through your local recycling facilities and in compliance with all federal, state and local regulations.

Contact your local waste management authority for additional information on how to dispose of the used product.

To help protect the environment, please dispose of the product properly when it has reached the end of its useful life, do not throw in the garbage. Information on collection sites and their opening hours is available from your local authority.

**Improper disposal of batteries can damage the environment**

Never throw batteries in the garbage. They may contain toxic heavy metals and must be handled as special waste. The chemical symbols of heavy metals are: Cd = cadmium, Hg = mercury, Pb = lead. Used batteries should therefore be disposed of through a local collection point.

**Warranty**

**What does this warranty cover?**

The warranty covers:

- Damage, breakage or inoperability due to defect.
- Damage not accounted for by normal wear and tear or following the safety and maintenance instructions provided in the user manual.

**What is not covered by the warranty?**

The warranty does not cover damage caused by:

- Normal wear and tear of the product, including fragile parts (such as switches, glass, etc.).

Improper use or transport;

- Disregarding safety and maintenance instructions;
- Accidents or acts of nature (e.g. lightning, fire, water, etc.);
- Tampering with the product (such as removing cover, unscrewing screws etc.)

**What is the period of coverage and warranty resolution?**

The warranty is for 3 years from the date of purchase. At our discretion, product will either be refunded or replaced.

**What will we not do?**

We will not:

- Start a new warranty period upon product exchange;
- We will not repair product.

**How to process the warranty?**

We recommend first either:

Call customer service at 1 (844) 543-5872

Visit the Website Customer Service Platform at **www.lidl.com/contact-us**

Visit a LIDL store for further assistance

To ensure the quickest warranty return process, please have the following available:

- The original sales receipt that includes the date purchased;
- The product and manual in the original package;
- A statement of the problem.

**What must you do to keep the warranty in effect?**

- Retain the original receipt;
- Follow all product instructions;
- Do not repair or modify the product.

**IP44**

**9**

**Distributed by / Distribuido por:**  
Lidl US LLC, Arlington, VA 22202

Model No. / Modelo Núm.: HG00734A / HG00734B

Version / Versión: 02 / 2017

Made in / Hecho en: China

Last Information Update - Estado de las informaciones: 03/2017 Ident.No.: HG00734A / HG0032017.9

How does state law relate to this warranty?

Any State laws that contradict or modify the warranty listed here take the consumer's benefit will be followed.