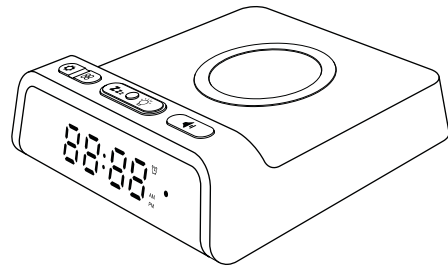
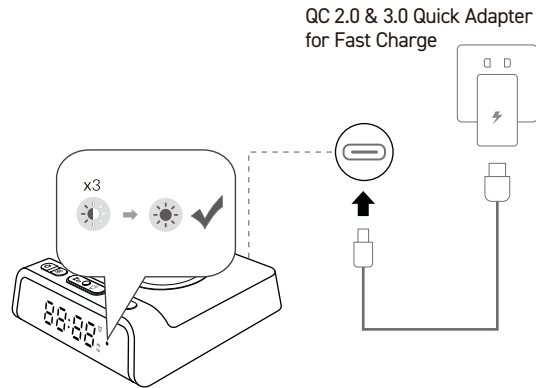


15W WIRELESS CHARGER WITH CLOCK

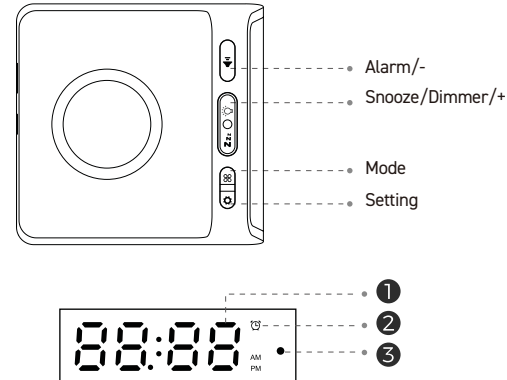


Package Contents:
 (1) Qi Dock with Clock
 (1) 4ft Charging Cable
 (1) User Manual

POWER INDICATOR



INTRODUCTION



1. Clock Display: Time/Year/Month/Date
2. Alarm Indicator
3. Wireless Charging Indicator

SETTING BUTTON

1. Press the to enter the settings including the clock, 12/24-hour format, Alarm, Year, Month and Date.
2. Press the to increase the value. (Press and hold the button for rapid adjustment)
3. Press the to decrease the value. (Press and hold the button for rapid adjustment)
4. Press the to toggle to the other setting options.
5. Long press the to exit the setting.
6. Automatically returns to the clock display mode after 25 seconds without any operations.

MODE BUTTON

1. Press the to toggle to view the clock, 12/24H, alarm, year, month&date.
2. Returns to clock display after 10 seconds without any operations.

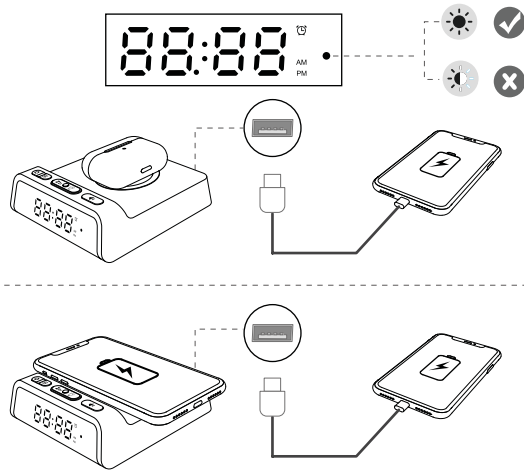
SNOOZE/DIMMER/+ BUTTON

1. 3 levels of brightness. Press the to adjust the brightness.
2. While the alarm is sounding, press the to temporarily silence the alarm (5 minutes is predefined). Snooze can be used three times during alarm.
3. Long press the to turn off the alarm.

ALARM/- BUTTON

1. Press the to adjust the Alarm volume.
2. Long press the to turn the alarm ON and OFF.

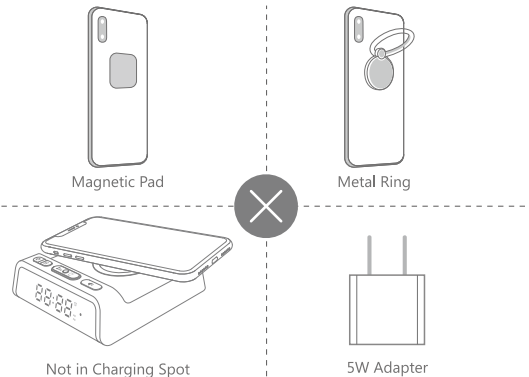
CHARGING



SPECIFICATIONS

1. input: 5V \equiv 3A 9V \equiv 2A 12V \equiv 2A
2. output: 5W/7.5W/10W/15W
3. Wireless Distance: \leq 5mm
4. Efficiency: \geq 71%
5. Blue Light - Charging
6. Blue Light Flashing - Error

ATTENTIONS



1. Please keep the charger away from water or other liquids.
2. Do not place the charger too close to any magnetic stripe or clip card (ID card, bank cards, etc.) to avoid magnetic failure.
3. This item is not to be used on any mobile device with metal plates, as it will cause extreme heat that may burn and /or damage the device.
4. Fast charge via the plug and USB charging cable (both support QC2.0 or QC3.0).
5. Usually we recommend that the thickness of phone case should be within 4mm(0.12 inch).
6. The standard temperature of wireless charger Qi is 130 °F, but the temperature of our products should be controlled within 113 °F. The charger will cut off current when abnormal heating occurs. Please contact us if any damage occurs.
7. We recommend that you turn off the power-consumption software before charging to effectively prevent the phone from overheating. When the temperature exceeds 113 °F during charging, it is normal for the charging speed to slow down.

FCC Warning

This device complies with Part 18 of the FCC Rules.

Refer to FCC Part 18.213(c) and KDB 784748 Anner A section A.5:

(a)Max. Electric Field Emissions: 0.5177V/m

Max. Magnetic Field Emissions: 0.4108V/m

(b) The maintenance of the system is the responsibility of the manufacturer.

(c) To prevent interference, the product should be as far away from devices operating at the same frequency as possible.

FCC Radiation Exposure Statement:

This equipment complies with FCC radiation exposure limits set forth for an uncontrolled environment. This equipment should be installed and operated with minimum distance 20cm between the radiator & your body.