



Die Line File: FDL\_MSKU\_VELOP\_US\_QIG

REV  
0 00

Artwork File: QSG\_WHW301\_WHW302\_WHW303\_8820-02483\_RevC01\_Velop

DIE LAYOUT

# VELOP US QIG - 400gsm C2S + 400gsm C2S

Business Unit: NET-Networking

Program Manager:

Packaging Engineer: Brian Byrd

Retail Outside Dimension (Including Hang Tab)

L x W x D (in):

L x W x D (mm):

DIE/MATERIAL SPECS:

Material: Please refer to drawing

Blank Size (in): 4.410 x 9.291

Blank Size (mm): 112.003 x 235.999

This dieline works for following skus (if any):

Unit: IN/MM

Side Shown: PRINT SIDE

Flute/Grain: horizontal

Tolerance: +/- 1/32" - 0.8mm

Drawing Scale 1:1

RELEASE DATE: 09/21/2017

DIELINE:

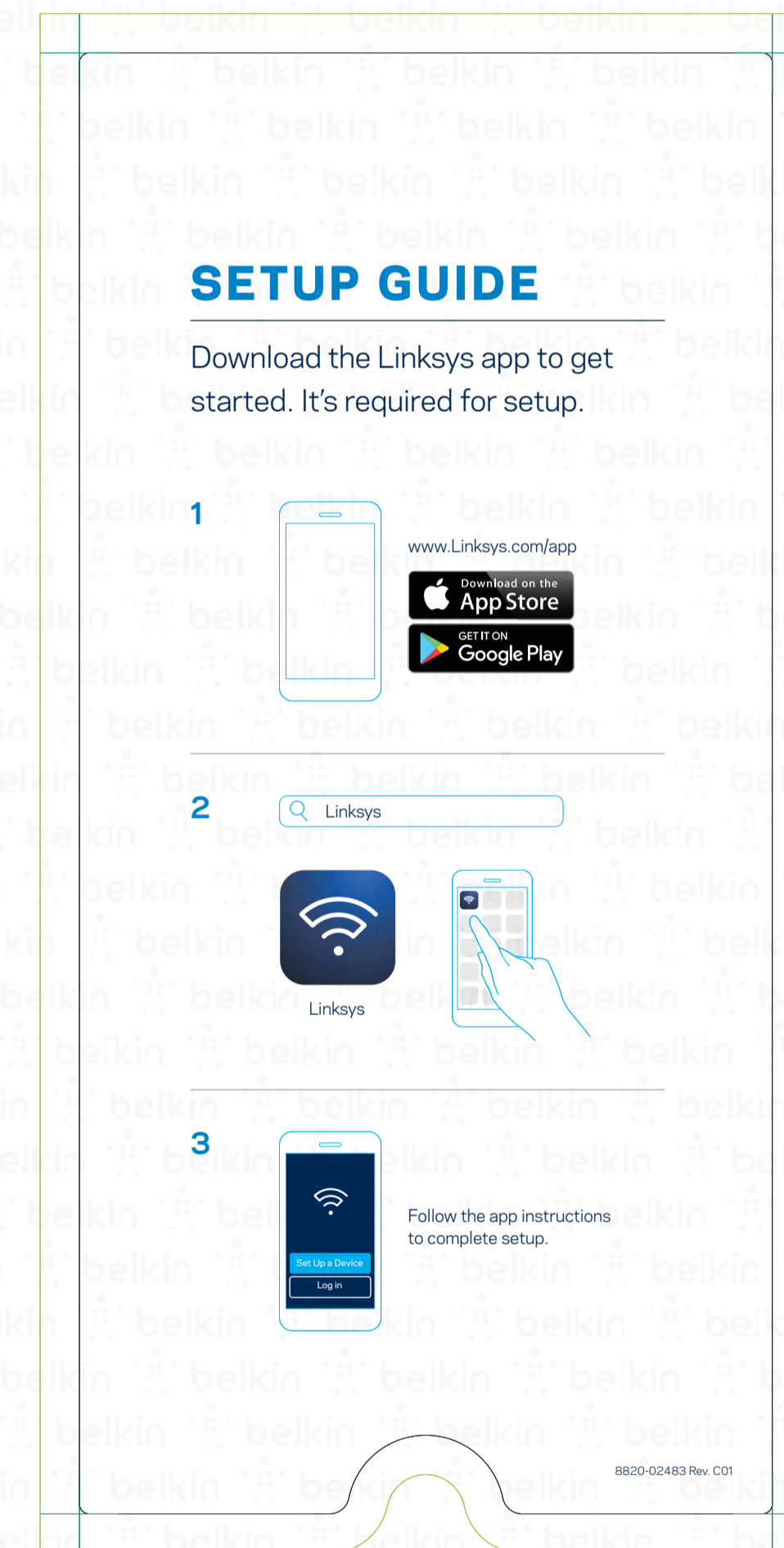
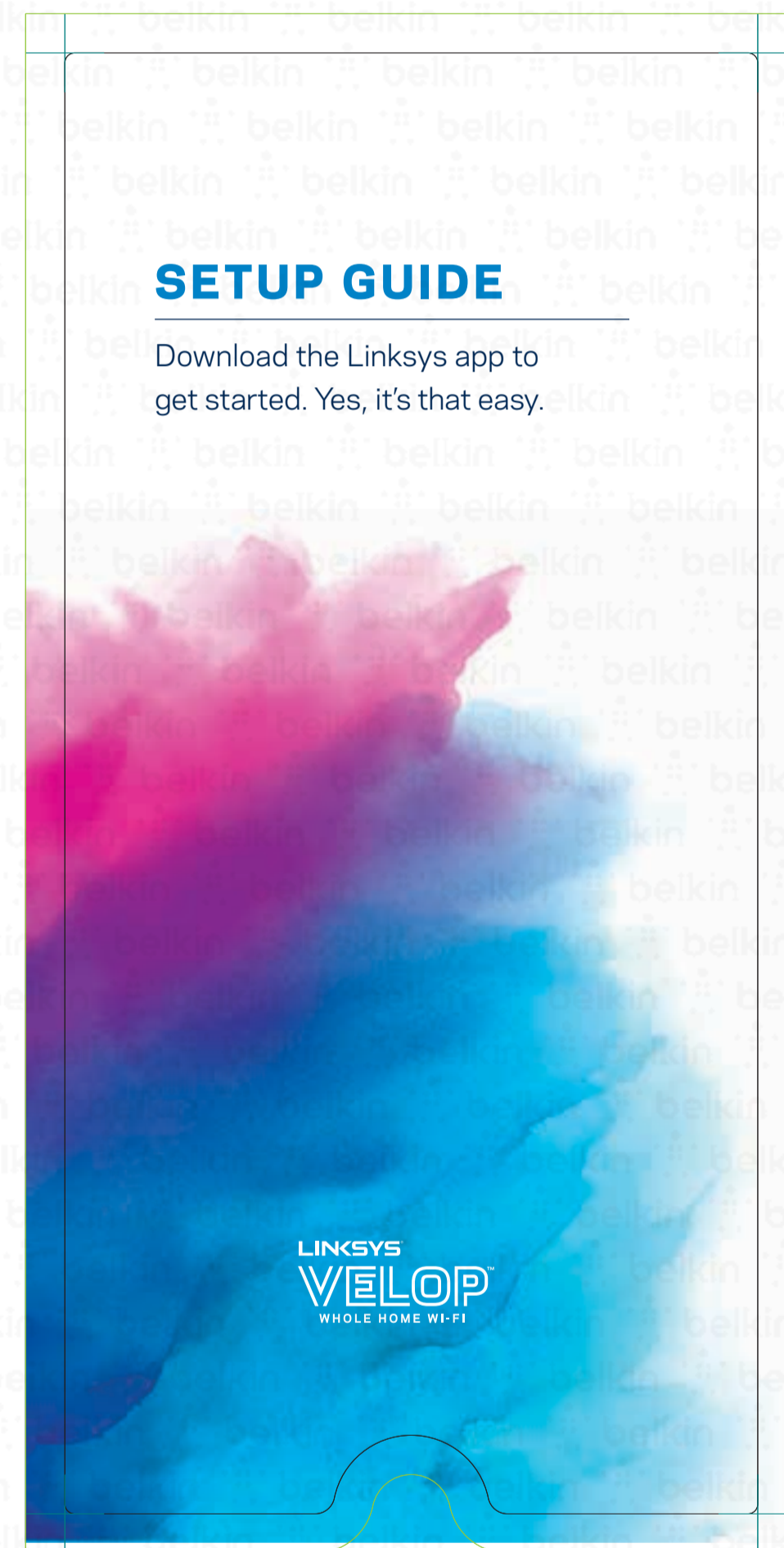
# Final

THIS DOCUMENT & THE INFORMATION IN IT ARE THE CONFIDENTIAL PROPERTY OF BELKIN INTERNATIONAL AND MUST NOT BE COPIED, REPRODUCED OR USED IN ANY MANNER WITHOUT THE WRITTEN CONSENT OF BELKIN CORPORATION. IT MUST BE RETURNED UPON REQUEST

FRONT

BACK

9<sup>9</sup>/<sub>32</sub>  
[235.999]



belkin ICG PRODUCTION			
PP#	24923		
FILE NAME	QSG_WHW301_WHW302_WHW303_8820-02483_RevC01_Velop		
SKU#	WHW3031WHW3021WHW303	REVISION	C01
PF	8820-02483		
DESIGNER	Shih	VERSION	01
DATE	October 27, 2017 3:49 PM		

8820-02483 Rev C01

4<sup>13</sup>/<sub>32</sub>  
[112.003]

PRINT SPECS:

Color Plates:



Finish:

OVERALL PP COAT

Notes:

ALL TEXT AND GRAPHIC ELEMENTS COLOR: CMYK, PMS 3005C, PMS 295

**DO NOT PRINT  
DIE LINES, PRINTERS NOTES**

## **Federal Communication Commission Interference Statement**

This device complies with Part 15 of the FCC Rules. Operation is subject to the following two conditions: (1) This device may not cause harmful interference, and (2) this device must accept any interference received, including interference that may cause undesired operation.

This equipment has been tested and found to comply with the limits for a Class B digital device, pursuant to Part 15 of the FCC Rules. These limits are designed to provide reasonable protection against harmful interference in a residential installation. This equipment generates, uses and can radiate radio frequency energy and, if not installed and used in accordance with the instructions, may cause harmful interference to radio communications. However, there is no guarantee that interference will not occur in a particular installation. If this equipment does cause harmful interference to radio or television reception, which can be determined by turning the equipment off and on, the user is encouraged to try to correct the interference by one of the following measures:

- Reorient or relocate the receiving antenna.
- Increase the separation between the equipment and receiver.
- Connect the equipment into an outlet on a circuit different from that to which the receiver is connected.
- Consult the dealer or an experienced radio/TV technician for help.

FCC Caution: Any changes or modifications not expressly approved by the party responsible for compliance could void the user's authority to operate this equipment.

This transmitter must not be co-located or operating in conjunction with any other antenna or transmitter.

Operations in the 5.15-5.25GHz band are restricted to indoor usage only.

### **Radiation Exposure Statement:**

This equipment complies with FCC radiation exposure limits set forth for an uncontrolled environment. This equipment should be installed and operated with minimum distance 32cm between the radiator & your body.

### **Industry Canada statement:**

This device complies with ISED's licence-exempt RSSs. Operation is subject to the following two conditions: (1) This device may not cause harmful interference, and (2) this device must accept any interference received, including interference that may cause undesired operation.

Le présent appareil est conforme aux CNR d'ISED applicables aux appareils radio exempts de licence. L'exploitation est autorisée aux deux conditions suivantes : (1) le dispositif ne doit pas produire de brouillage préjudiciable, et (2) ce dispositif doit accepter tout brouillage reçu, y compris un brouillage susceptible de provoquer un fonctionnement indésirable.

#### **Caution :**

(i) the device for operation in the band 5150-5250 MHz is only for indoor use to reduce the potential for harmful interference to co-channel mobile satellite systems;

(ii) the maximum antenna gain permitted for devices in the band 5725-5850 MHz shall be such that the equipment still complies with the e.i.r.p. limits specified for point-to-point and non-point-to-point operation as appropriate; and

(iii) Users should also be advised that high-power radars are allocated as primary users (i.e. priority users) of the bands 5650-5850 MHz and that these radars could cause interference and/or damage to LE-LAN devices.

#### **Avertissement:**

(i) les dispositifs fonctionnant dans la bande 5150-5250 MHz sont réservés uniquement pour une utilisation à l'intérieur afin de réduire les risques de brouillage préjudiciable aux systèmes de satellites mobiles utilisant les mêmes canaux;

(ii) le gain maximal d'antenne permis (pour les dispositifs utilisant la bande de 5725 à 5850 MHz) doit être conforme à la limite de la p.i.r.e. spécifiée pour l'exploitation point à point et l'exploitation non point à point, selon le cas;

(iii) De plus, les utilisateurs devraient aussi être avisés que les utilisateurs de radars de haute puissance sont désignés utilisateurs principaux (c.-à-d., qu'ils ont la priorité) pour les bandes 5650-5850 MHz et que ces radars pourraient causer du brouillage et/ou des dommages aux dispositifs LAN-EL.

**Radiation Exposure Statement:**

This equipment complies with ISED radiation exposure limits set forth for an uncontrolled environment. This equipment should be installed and operated with minimum distance 33cm between the radiator & your body.

**Déclaration d'exposition aux radiations:**

Cet équipement est conforme aux limites d'exposition aux rayonnements ISED établies pour un environnement non contrôlé. Cet équipement doit être installé et utilisé avec un minimum de 33 cm de distance entre la source de rayonnement et votre corps.