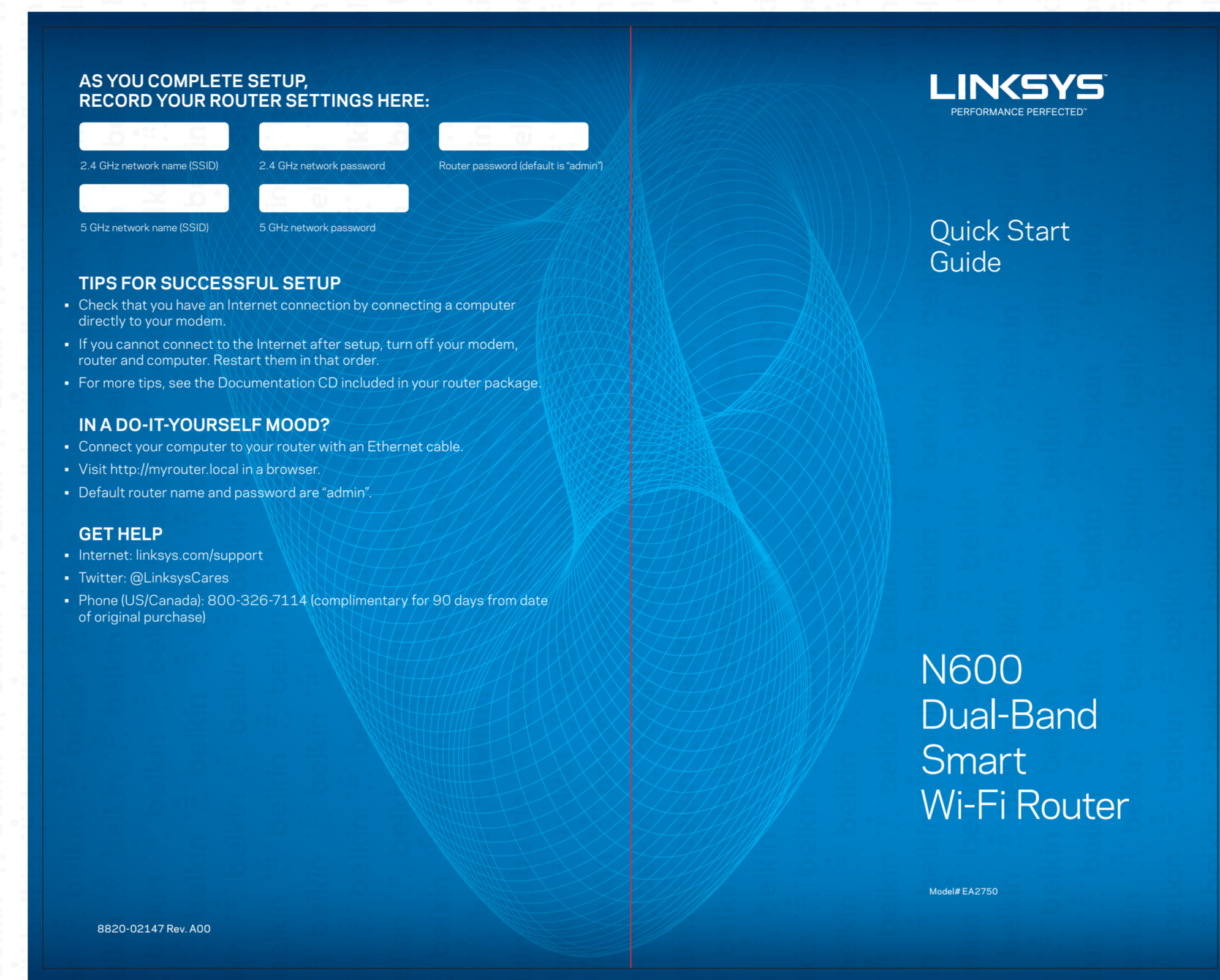
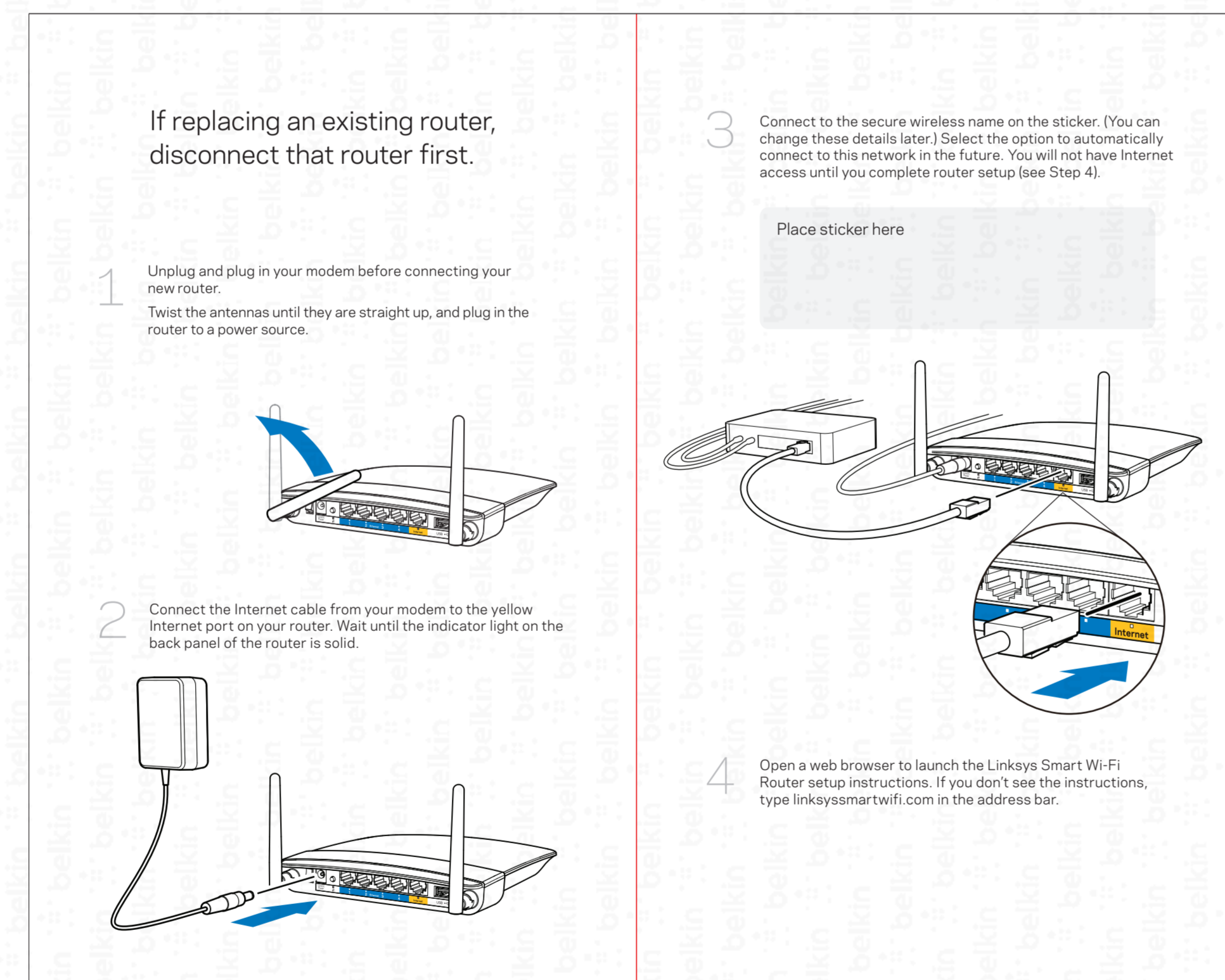


DIE LAYOUT



Front

belkin GLOBAL PACKAGING SERVICES	
PRJ	EA2750
FILE NAME	QSG_EA2750_8820-02147_RevA00
DATE	06/05/2013
PREPARED BY	8820-02147
DESIGNED BY	PA
DATE	2013
VERSION	01



Back

10
[253.647]

8
[203.123]

Business Unit:
Program Manager:
Packaging Engineer:
Retail Outside Dimension (Including Hang Tab)
L x W x D (in):
L x W x D (mm):
DIE/MATERIAL SPECS:
Material: TBD
Blank Size (in): 9.991 x 17.845
Blank Size (mm): 253+49/64 x 453.264
This dieline works for following skus (if any):

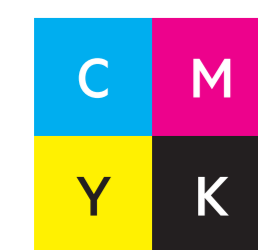
Unit: IN/MM
Side Shown: PRINT SIDE
Flute/Grain: vertical
Tolerance: +/- 1/32" - 0.8mm
Drawing Scale 1:1

RELEASE DATE: 06/05/2013
DIELINE:
Final

THIS DOCUMENT & THE INFORMATION IN IT ARE THE CONFIDENTIAL PROPERTY OF BELKIN INTERNATIONAL AND MUST NOT BE COPIED, REPRODUCED OR USED IN ANY MANNER WITHOUT THE WRITTEN CONSENT OF BELKIN CORPORATION. IT MUST BE RETURNED UPON REQUEST

PRINT SPECS:

Color Plates:



Finish:

Notes:

TENT FOLD IN HALF ALONG RED LINE IN THE CENTER
FRONT/OUTSIDE: ALL TEXT AND GRAPHIC ELEMENTS COLOR: CMYK,
BACK/INSIDE: ALL TEXT AND GRAPHIC ELEMENTS COLOR: BLACK

**DO NOT PRINT
DIE LINES, PRINTERS NOTES**