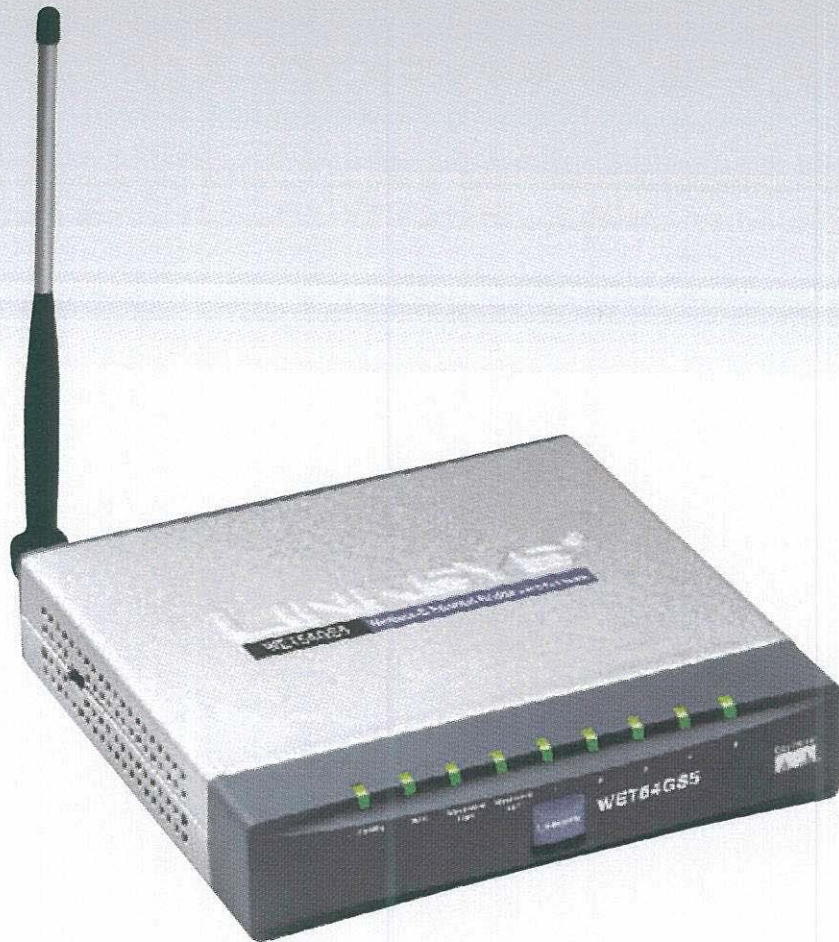


LINKSYS®

A Division of Cisco Systems, Inc.



Package Contents

- Wireless-G Ethernet Bridge with 5-Port Switch
- Setup CD-ROM
- User's Guide on CD
- Quick Installation Guide
- Detachable Antenna
- RJ-45 Network Cable
- Power Adapter
- Registration Card

2.4 GHz
802.11g

Wireless-G

Ethernet Bridge with 5-Port Switch

Quick Installation



Model No. **WET54GS5**

CISCO SYSTEMS



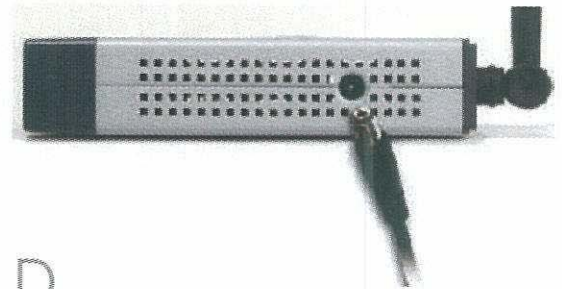
1

Connect the Wireless-G Ethernet Bridge for Setup

- A** Attach the detachable antenna.
- B** Plug the included Ethernet network cable into one of the LAN ports on the back panel of the Bridge.
- C** Plug the other end of the Ethernet network cable into the RJ-45 port of a hub, switch, or router on your wired network.
- D** Plug the supplied power adapter into the Power port on the side panel of the Bridge. Then plug the other end into an electrical outlet.



B



D

Also Available:

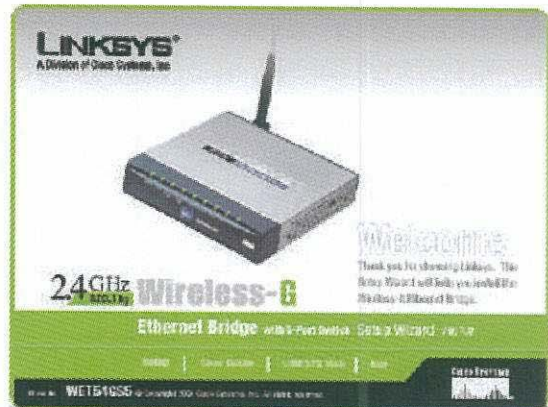
- Linksys High Gain Antenna for SMA Connectors (HGA75)



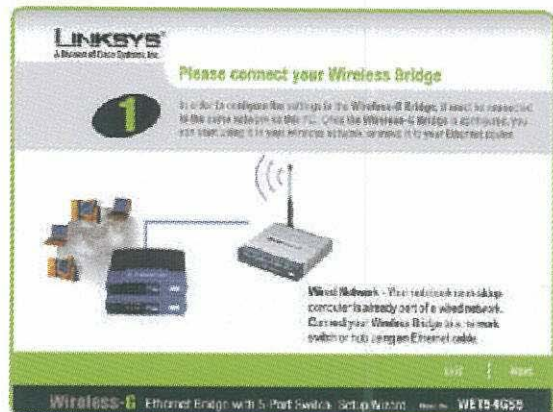
2

Set up the Wireless-G Ethernet Bridge

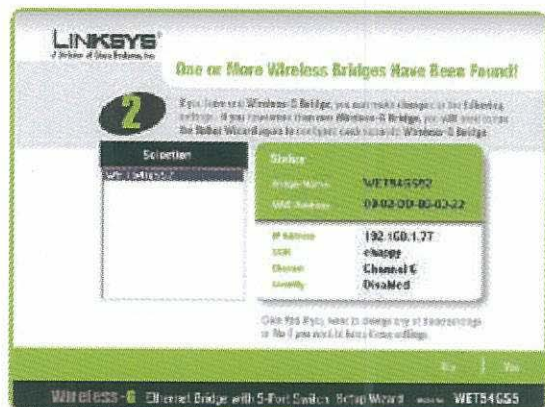
- A** Insert the Setup CD-ROM into your PC's CD-ROM drive. The Setup Utility should run automatically, and the *Welcome* screen should appear. If it does not appear, click the **Start** button and choose **Run**. In the field that appears, enter **D:\setup.exe** (if "D" is the letter of your CD-ROM drive).
- B** Click **Setup** to begin the setup process.
- C** Make sure the Bridge is correctly connected to your wired network. Click **Next**.
- D** The screen displays a list of Wireless-G Ethernet Bridges on your network, along with their status information. Select the Bridge you are currently installing by clicking its name in the *Selection* box. Click **Yes**.
- E** A *Password* screen will appear. In lowercase letters, enter **admin** in the *Password* field. Then click **Enter**.



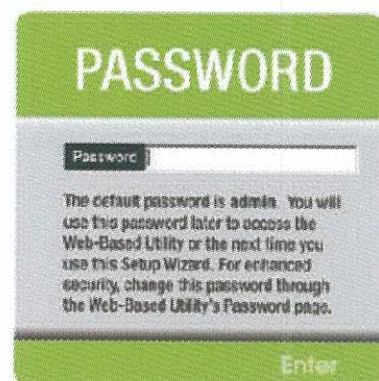
A



C



D



E

F The *Mode Settings* screen will appear. Select **Infrastructure** if you want your wireless computers to communicate with computers on your wired network using a wireless access point. Select **Ad-Hoc** if you want wireless computers to communicate directly with each other.

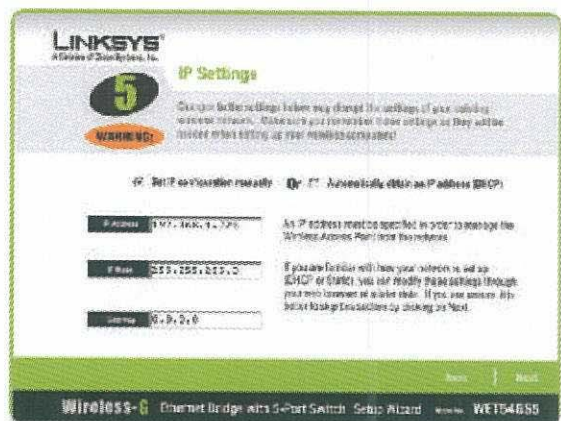
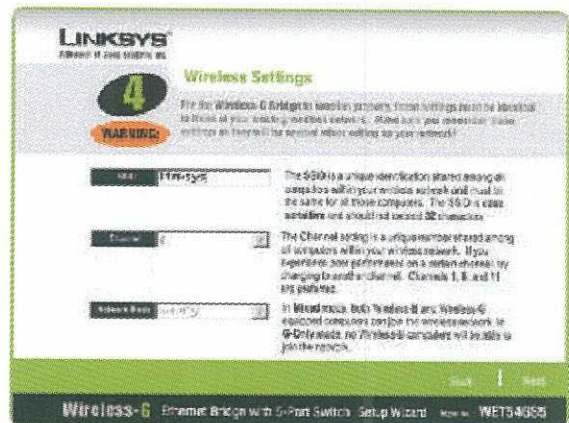
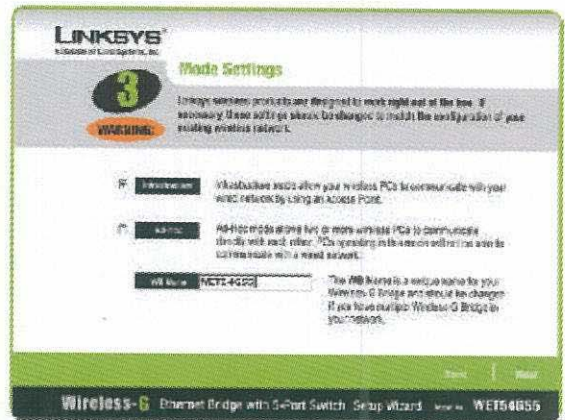
In the *WB Name* field, enter a unique name for the Bridge. Click **Next**.

G On the *Wireless Settings* screen, enter your wireless network's SSID. If you chose Ad-Hoc mode, select the channel that your network uses.

If you have Wireless-G (802.11g) and Wireless-B (802.11b) devices in your network, then keep the default *Network Mode* setting, **Mixed**. If you have only Wireless-G devices, select **G-Only**. Then click **Next**.

H The *IP Settings* screen will appear. If your network has a DHCP server, select **Automatically obtain an IP address (DHCP)**. Click **Next** and proceed to step 1.

If your network does not have a DHCP server, select **Set IP configuration manually**. Enter



an IP Address, IP Mask (also known as Subnet Mask), and Gateway. You must specify an IP address. If you are unsure about the IP Mask and Gateway, leave the default settings. Click **Next** and proceed to step I.

The *Security Settings* screen will appear. Choose from WEP or WPA PSK. If your network has WEP encryption enabled, then select the level of WEP encryption, and enter a Passphrase. The WEP key will be automatically generated. If you want to manually enter the WEP key, leave the *Passphrase* field blank and enter the WEP key in the *Key 1* field. If your network has WEP encryption disabled, keep the default, **Disabled**. Then click **Next**.

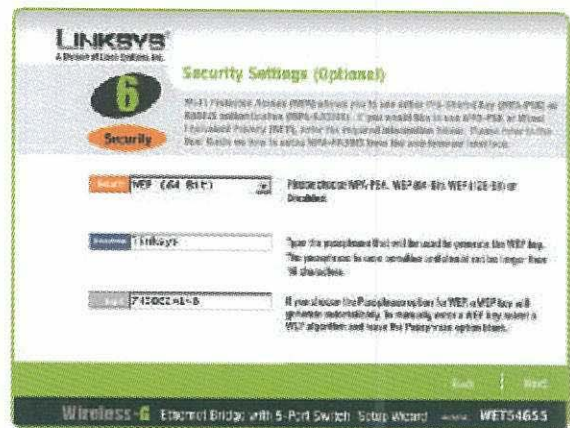
If your network has WPA PSK enabled, then select WPA PSK from the drop-down menu. Select TKIP for the algorithm, then enter a Pre-Shared Key of 8-32 characters. Click **Next**.

Review your settings on the *Confirmation* screen. Write down the Bridge's IP Address if you want to access the Bridge's Web-based Utility. Click **Yes** to save these settings.

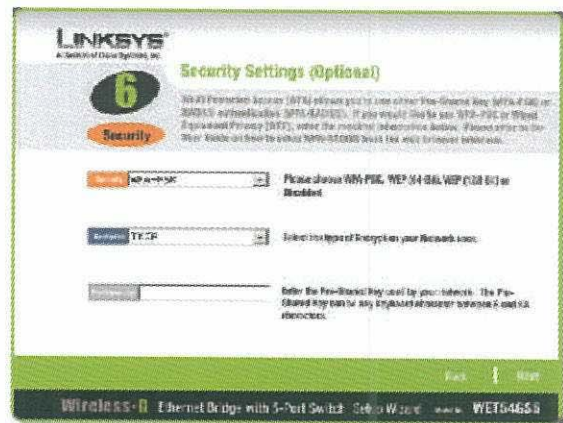
On the *Congratulations* screen, click **Exit**.

NOTE: The default IP address of the Bridge is **192.168.1.226**.

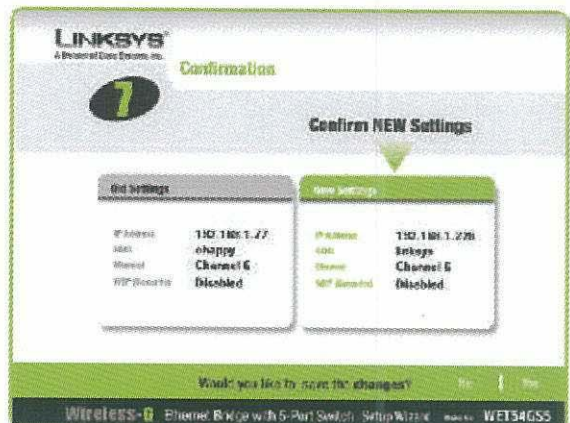
NOTE: For more security information, refer to "Appendix B: Wireless Security." in the User Guide on the CD-ROM.



11



12



J

3

Connect the Wireless-G Ethernet Bridge for Network Use

- A** After configuration, unplug the power adapter from the electrical outlet, and unplug the Ethernet network cable from the hub, switch, or router.
- B** Plug the Ethernet network cable into the RJ-45 port on the Ethernet-ready network device you wish to add to the wireless network.
- C** Plug the power adapter into a local electrical outlet.

Congratulations! The installation of the Wireless-G Ethernet Bridge is complete.

NOTE: If you would like to change these basic settings or make advanced configuration changes, use your web browser and the Wireless-G Ethernet Bridge Web-based Utility.

Open your web browser, and enter the IP address of the Wireless-G Ethernet Bridge (the default IP address is **192.168.1.226**). Refer to the User Guide on the Setup CD-ROM.

LINKSYS®

A Division of Cisco Systems, Inc.

For additional information or troubleshooting help, refer to the User Guide on the Setup CD-ROM. You can also call or e-mail for further support.

24-hour Technical Support

800-326-7114

(toll-free from US or Canada)

E-mail Support

support@linksys.com

Website

<http://www.linksys.com> or

<http://support.linksys.com>

RMA (Return Merchandise Authorization)

<http://www.linksys.com/support>

FTP Site

<ftp://ftp.linksys.com>

Sales Information

800-546-5797 (800-LINKSYS)

Linksys is a registered trademark or trademark of Cisco Systems, Inc. and/or its affiliates in the U.S. and certain other countries. Copyright © 2004 Cisco Systems, Inc. All rights reserved.

Federal Communication Commission Interference Statement

This equipment has been tested and found to comply with the limits for a Class B digital device, pursuant to Part 15 of the FCC Rules. These limits are designed to provide reasonable protection against harmful interference in a residential installation. This equipment generates, uses and can radiate radio frequency energy and, if not installed and used in accordance with the instructions, may cause harmful interference to radio communications. However, there is no guarantee that interference will not occur in a particular installation. If this equipment does cause harmful interference to radio or television reception, which can be determined by turning the equipment off and on, the user is encouraged to try to correct the interference by one of the following measures:

- Reorient or relocate the receiving antenna.
- Increase the separation between the equipment and receiver.
- Connect the equipment into an outlet on a circuit different from that to which the receiver is connected.
- Consult the dealer or an experienced radio/TV technician for help.

This device complies with Part 15 of the FCC Rules. Operation is subject to the following two conditions: (1) This device may not cause harmful interference, and (2) this device must accept any interference received, including interference that may cause undesired operation.

FCC Caution: Any changes or modifications not expressly approved by the party responsible for compliance could void the user's authority to operate this equipment.

IMPORTANT NOTE:

FCC Radiation Exposure Statement:

This equipment complies with FCC radiation exposure limits set forth for an uncontrolled environment. This equipment should be installed and operated with minimum distance 20cm between the radiator & your body. This transmitter must not be co-located or operating in conjunction with any other antenna or transmitter.

Linksys declared that WET54GS5 is limited in CH1-11 by specified firmware controlled in USA.