



valet™
valet™plus

user guide



Contents

Chapter 1: Product Overview	1
Chapter 2: Cisco Connect.....	3
Chapter 3: Advanced Configuration.....	13
Appendix A: Troubleshooting	36
Appendix B: Specifications	37
Appendix C: Warranty Information.....	38
Appendix D: Regulatory Information.....	40
Appendix E: Software End User License Agreement	42

Chapter 1: Product Overview

Thank you for choosing a Cisco Valet wireless hotspot. This User Guide covers both the Valet (M10) and Valet Plus (M20) models. Valet will be used as a general reference to both models and all details in this User Guide apply to both models unless a specific model number is noted.

The Valet lets you and others in your home access the Internet wirelessly with a wireless equipped device such as a laptop or desktop computer, gaming device, or phone. The Valet wireless hotspot also has Fast Ethernet ports that allow you to connect up to four wired devices. The Valet Plus features Gigabit Ethernet ports for even faster wired speeds. You can also use your Valet wireless hotspot to share resources, such as computers. A variety of security features help to protect your data and your privacy while online.

The Valet includes the Cisco Connect software that helps to manage your Valet settings, local and guest access, and parental control settings.

Top



Top of Valet



Top of Valet Plus

1, 2, 3, 4 (Blue) These numbered LEDs, corresponding with the numbered ports on the back of the Valet, serve two purposes. The LED is continuously lit when the Valet is connected to a device through that port. It flashes to indicate network activity over that port.

valetplus (M20 Only) (Green/Blue) The LED lights up green when the port is connected to a gigabit port or blue when the port is connected to a 10/100 port.



Wi-Fi Protected Setup Button If you have client devices, such as wireless adapters, that support Wi-Fi Protected Setup™, then you can use the Wi-Fi Protected Setup button to automatically configure wireless security for your wireless network(s).

To use Wi-Fi Protected Setup, refer to **Wi-Fi Protected Setup, page 20**.



Wireless (Blue) The Wireless LED lights up when the wireless feature is enabled. It flashes when the Valet sends or receives data over the wireless network.



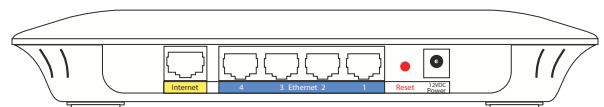
Internet (Blue) The Internet LED lights up when there is a connection made through the Internet port. It flashes to indicate network activity over the Internet port.

valetplus (M20 Only) (Green/Blue) The LED lights up green when the port is connected to a gigabit port or blue when the port is connected to a 10/100 port.



Power (Blue) The Power LED lights up when the Valet is powered on. When the Valet goes through its self-diagnostic mode during every boot-up, the LED flashes. When the diagnostic is complete, the LED is continuously lit.

Back



Back



Internet The Internet port is where you connect the network (Ethernet) cable from your Internet connection. In most cases you will be connecting one end of the network cable to the Ethernet port on your cable or DSL modem and the other end to the Internet port on your Valet wireless hotspot.



4, 3, 2, 1 Using network cables, these Ethernet ports (4, 3, 2, 1) connect the Valet to computers or other devices on your wired network that have Ethernet ports such as gaming consoles, HDTVs, Blu-ray disc players, or printers.



Reset There are two ways to reset the Valet to its factory defaults. Either press and hold the Reset Button for approximately five seconds, or restore the defaults from the *Administration > Factory Defaults* screen in the Valet's browser-based utility (refer to **Administration > Factory Defaults, page 33**).



Power The Power port is where you connect the power adapter.

Horizontal Placement

The Valet has four rubber feet on its bottom panel. Place the Valet on a level surface near an electrical outlet.




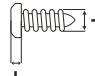
Horizontal Placement

Wall-Mounting Placement

The Valet has two wall-mount slots on its bottom panel. The distance between the slots is 152 mm.

Two screws are needed to mount the Valet.

Suggested Mounting Hardware

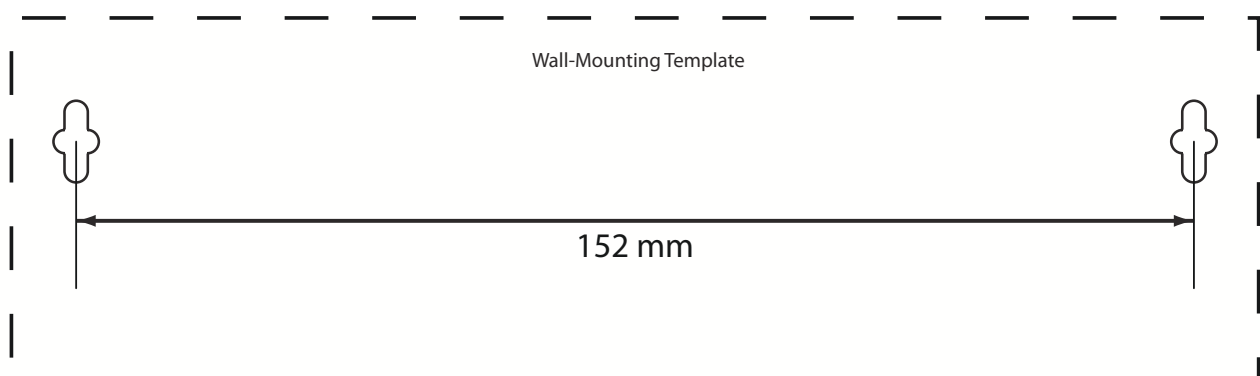
		2.5-3.0 mm
4-5 mm	1-1.5 mm	



NOTE: Cisco is not responsible for damages incurred by unsecured wall-mounting hardware.

Follow these instructions:

1. Determine where you want to mount the Valet. Make sure that the wall you use is smooth, flat, dry, and sturdy. Also make sure the location is within reach of an electrical outlet.
2. Drill two holes into the wall. Make sure the holes are 152 mm apart.
3. Insert a screw into each hole and leave 3 mm of its head exposed.
4. Position the Valet so the wall-mount slots line up with the two screws.
5. Place the wall-mount slots over the screws and slide the Valet down until the screws fit snugly into the wall-mount slots.



Print this page at 100% size.

Cut along the dotted line, and place on the wall to drill precise spacing.

Chapter 2: Cisco Connect

During installation, the setup software installs the Cisco Connect software on your computer. Cisco Connect offers options to connect additional computers or devices to your Valet and allows you to modify the Valet's settings.

Installation

To install the Valet:

1. Insert the Easy Setup Key into a USB port on your computer.



Insert Easy Setup Key

2. Click **Connect to your Cisco Valet**.



Connect to your Cisco Valet

If you do not see this, open the Easy Setup Key folder and double-click **Connect**. To do so, perform the following steps for your specific operating system:

Windows 7

- a. Go to **Start > Computer**.
- b. Double-click **Easy Setup Key** in the list of available drives.
- c. Double-click on **Connect.exe**.

Windows Vista

- a. Go to **Start > Computer**.
- b. Double-click **Easy Setup Key** in the list of available drives.
- c. Double-click on **Connect.exe**.

Windows XP

- a. Go to **Start > My Computer** and select **Easy Setup Key**.

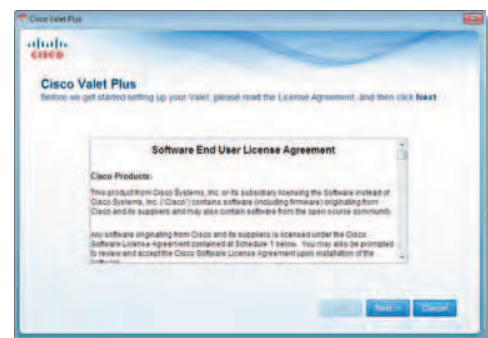
- b. Double-click **Connect.exe**.

Mac OS X

- a. Double-click on the CD on your desktop.

- b. Double-click **Connect**.

3. Read the Software End User License Agreement. To accept the agreement and continue with the installation, click **Next**.



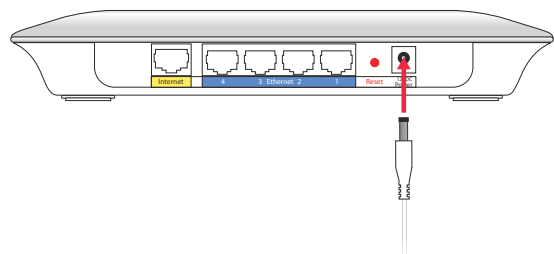
License Agreement

4. The connection steps are displayed.



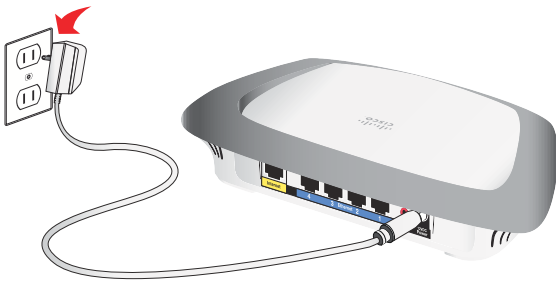
Connection Overview

- a. Plug the power cord into the Power port on the back of the Valet.



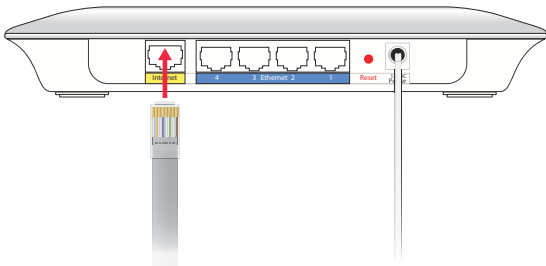
Connect to Power Port

b. Plug the power adapter into an electrical outlet.



Connect to Electrical Outlet

c. Unplug the existing network cable from your computer and plug it into the yellow port labeled **Internet** on the back of the Valet. Click **Next**.



Connect Network Cable



NOTE: You can view detailed connection steps by clicking **Show me how** in the setup software.



NOTE: If the setup software detects multiple Valets, select your Valet from the list of detected Valets by verifying the last 5 digits of the serial number on your Valet. The serial number is located on the left side of the product label, which is on the bottom panel of the Valet.

5. Please wait while your Valet is being set up.



Please Wait

6. When you see the *Congratulations* screen, your computer is connected to the Internet. Remove your Easy Setup Key and keep it in a safe place. You can use it to connect additional computers to your Valet's local network. Click **OK**.



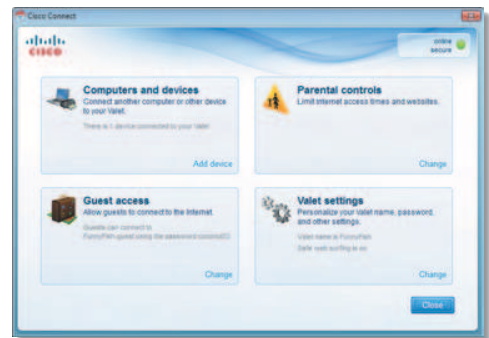
Installation is Complete



NOTE: If you have any trouble during the installation process, refer to the FAQs in the setup software or use a computer with an active Internet connection to visit www.ciscovalet.com/support.

Main Menu

The main menu offers four options: Computers and Devices, Parental Controls, Guest Access, and Valet settings. To select an option, click on it.



Main Menu

Local Access vs Guest Access

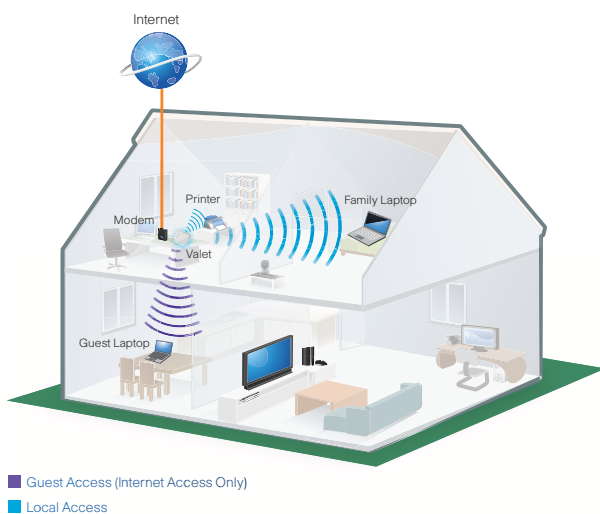
You can connect computers or devices to your Valet by giving them local access (*Computers and Devices* option) or Guest Access (*Guest Access* option).

Computers and Devices with local access will have access to the Internet and to other devices on your local network, including shared computers and printers which are connected to the Valet. Local access can be given to a wired or wireless device. Refer to **Computers and Other Devices, page 5** for more information.

Guest Access allows you to provide guests visiting your home with Internet access. Your guests will not have access to your other computers or personal data. Provide your guest with the Guest Network name and password. Guest computers must connect to your network using a wireless network connection. Refer to **Main Menu – Guest Access, page 5** and **Guest Access Settings, page 10** for more information.

The following diagram shows a typical example of how local access and guest access are used in the same home.

Guest Access and Local Access Sample Diagram



Main Menu – Computers and Devices

Use this option to connect other computers or devices to your Valet's local network, one at a time.

There is x device(s) connected to your Valet The number of devices connected to the Valet is displayed.

Add device To connect another computer or device to the Valet, click **Add device** and go to **Computers and Other Devices, page 5**.

Main Menu – Parental Controls

Parental controls restrict Internet access for up to five computers. For the computers you select, you can block or limit Internet access to specific times. You can also block specific websites.

Parental controls restrictions are being applied to x device(s) The number of devices with parental controls restrictions is displayed.

Change To enable parental controls or change settings, click **Change** and go to **Parental Controls, page 8**.

Main Menu – Guest Access

The guest network provides Internet access only. To grant Internet access to friends or family, provide the guest network name and password displayed on this screen.



NOTE: Guest Access provides Internet access only; it does not provide access to your local network and its resources or your personal information. For example, the guest computer cannot print to a printer on the local network or access files on a computer on the local network. Guest access helps minimize exposure of your local network and your family's private information.

Guests can connect to x-guest using the password xyz When a guest wants Internet access in your home, have the guest do the following:

1. Connect to the wireless guest network, which is the name of your wireless network followed by **-guest**.
2. Open a web browser.
3. On the login screen, enter the guest access password and click **Login**.

Change To disable guest access or change settings, click **Change** and go to **Guest Access Settings, page 10**.

Main Menu – Valet Settings

Use this option to personalize the Valet's settings.

Valet name is x The name of the Valet is displayed.

Safe Web Surfing Displays the on/off status of Safe Web Surfing option.

Change To change settings, click **Change** and go to **Valet Settings, page 11**.

Computers and Other Devices

The computers or devices you connect will have access to the Internet and your local network, including computers or other devices, such as a printer, connected to the Valet. If you have a guest visiting your home, you can provide Internet access only (no access to your local network) through the guest access feature. Refer to **Guest Access Settings, page 10** for more information.



Connect Another Computer or Device

Computer Click this option to connect another computer in your home. Go to **Computer, page 6**.

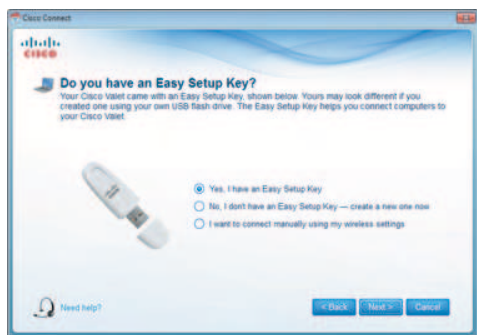
Wireless printer Click this option to connect a wireless printer. Go to **Wireless printer, page 7**.

Other devices Click this option to connect a device that is not a computer, such as a smartphone or game console. Go to **Device, page 8**.

Computer

Your Cisco Valet came with an Easy Setup Key. The Easy Setup Key holds the settings for the Valet. There are three options available when you choose to add a computer.

- **Yes, I have an Easy Setup Key** If you already have an Easy Setup Key, select this option. Click **Next** and go to **Connect with the Easy Setup Key, page 6**.
- **No, I don't have an Easy Setup Key — create a new one now** If you want to create or update an Easy Setup Key, select this option. Click **Next** and go to **Update or create an Easy Setup Key, page 6**.
- **I want to connect manually using my wireless settings** If you want to connect manually (without an Easy Setup Key), select this option. Click **Next** and go to **Connect without the Easy Setup Key, page 7**.



Connecting Another Computer

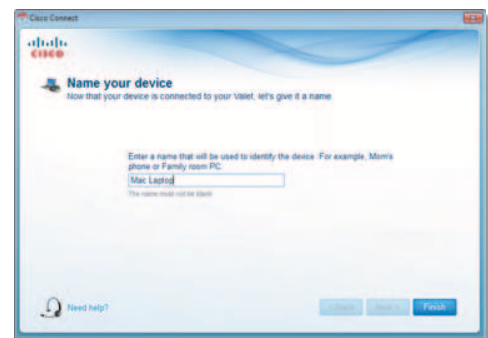
Connect with the Easy Setup Key

1. Insert the Easy Setup Key into an available USB port on the computer that you want to connect to the Valet.



2. On that computer, click **Connect to your Cisco Valet**. If you do not see this, open the **Easy Setup Key** folder and double-click **Connect**.
3. Follow the on-screen instructions to connect that computer to your Valet.

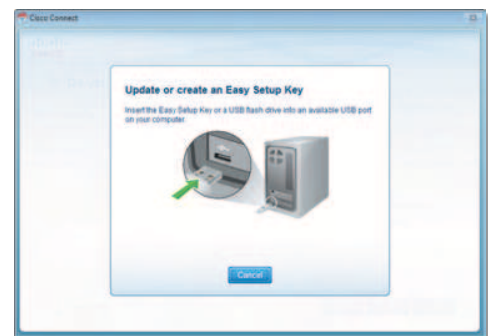
4. Return to the original computer running the Cisco Connect software and enter a name that will be used to identify the device. Click **Finish**.



Name Your Device

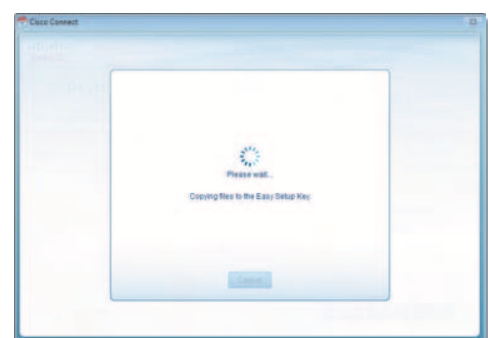
Update or create an Easy Setup Key

1. Insert the Easy Setup Key or your own USB flash drive into an available USB port on your computer.



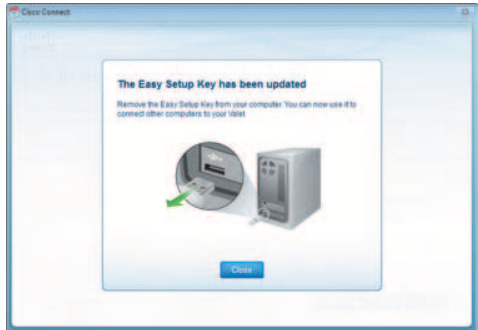
Update or Create an Easy Setup Key

2. Please wait while the settings are copied to the Easy Setup Key.



Copying Files to the Easy Setup Key

- Remove the Easy Setup Key and click **Close**. You can now use it to connect other computers to the Valet. Refer to **Connect with the Easy Setup Key, page 6** to complete the process of adding another computer.



Easy Setup Key Has Been Updated

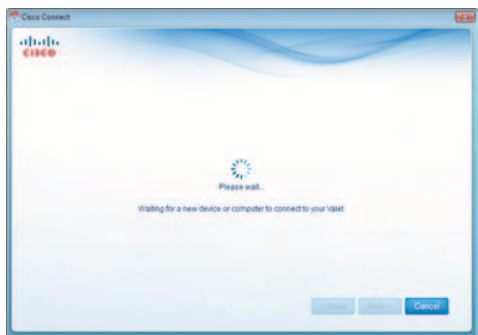
Connect without the Easy Setup Key

- Enter the *Network name (SSID)*, *Security Key*, and *Security Type* settings on your wireless device. To print this information, click **Print these settings**.

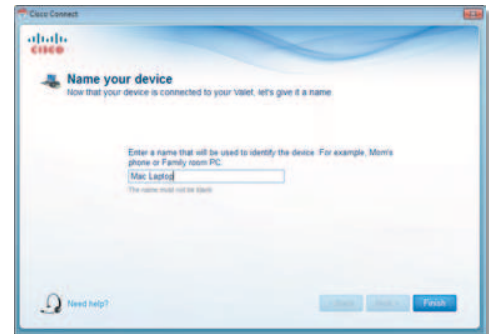


Wireless Network Settings

- After connecting your device, click **Next**.



- Enter a name that will be used to identify this device. Then click **Finish**.



Name Your Device

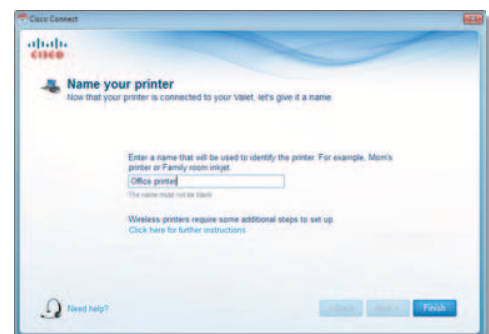
Wireless printer

- Refer to your printer's documentation to learn how to connect it to a wireless network.
- Enter the *Network name (SSID)*, *Security Key*, and *Security Type* settings on your wireless device. To print this information, click **Print these settings**.



Wireless Network Settings

- Wait until your printer connects. On the *Connecting a wireless printer* screen, click **Next**.
- Enter a name that will be used to easily identify your printer.



Name Your Printer

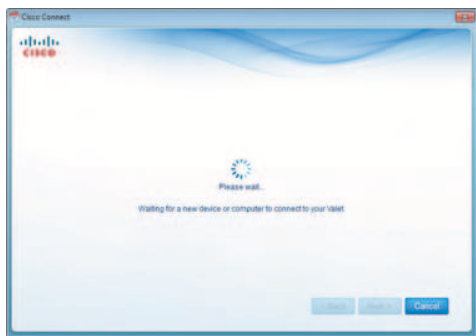
Device

1. Enter the *Network name (SSID)*, *Security Key*, and *Security Type* settings on your wireless device. To print this information, click **Print these settings**.

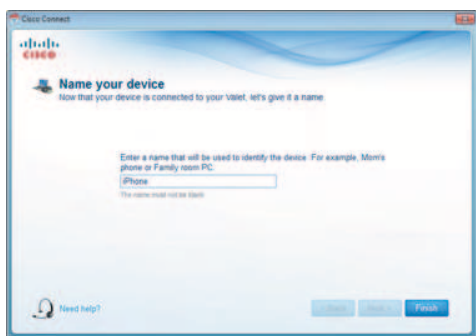


Wireless Network Settings

2. After connecting your device, click **Next**.



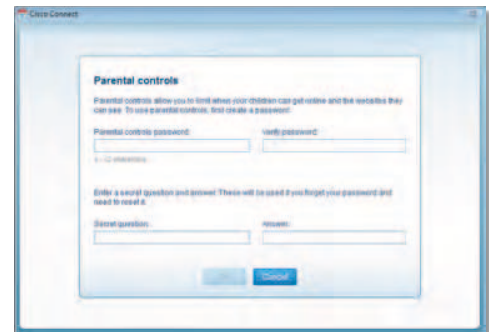
3. Enter a name that will be used to identify the device and click **Finish**.



Name Your Device

Parental Controls

For the computers you select, you can block or limit Internet access to specific times. You can also block specific websites.



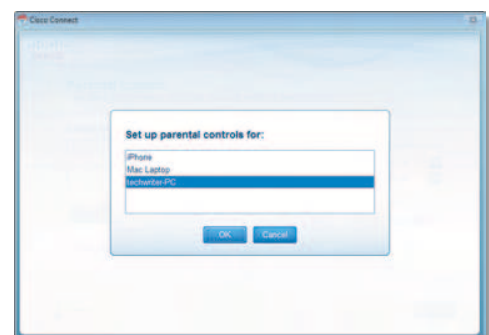
Parental Controls Password

First-Time Access of Parental Controls

1. The first time you access parental controls, you will be asked to create a parental controls password. Complete the following:
 - **Parental controls password** Create a password that protects access to parental controls.
 - **Verify password** Re-enter the password.
 - **Secret question** Create a secret question and answer pair. If you forget the password, you can reset it by correctly answering the secret question. Enter your question.
 - **Answer** Enter the answer to your secret question.

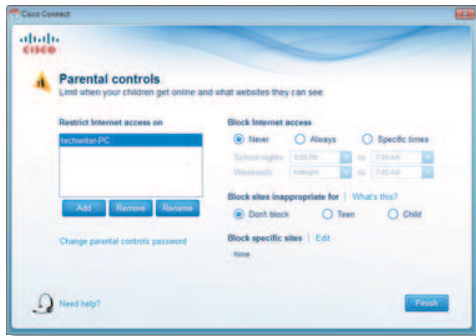
Click **OK** to save your settings.

2. Select the computer that you want to set up parental controls for. Then click **OK**.



Set Up Parental Controls For

3. The *Parental controls* main screen appears.



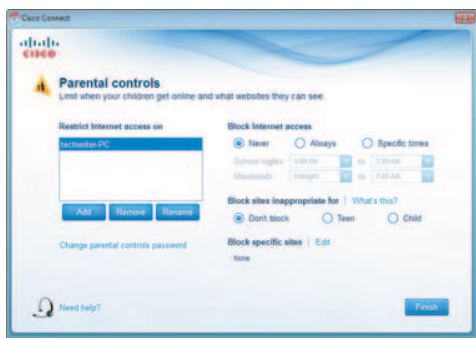
Manage Parental Controls

You have the following options:

Restrict Internet access on The list of computer(s) you have selected for parental controls is displayed. To add, remove, or rename computers on this list, refer to **Restrict Internet Access List, page 9**. To set up parental controls on a computer, refer to **Set Up Parental Controls, page 9**.

Change parental controls password Click this option to change the password that protects access to parental controls. Refer to **Change Parental Controls Password, page 10**.

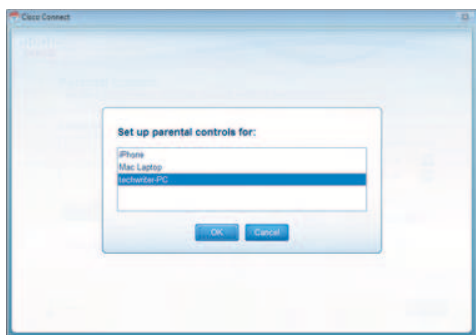
Restrict Internet Access List



Parental Controls

Add If you want to apply parental controls to additional computers, click **Add**.

If you clicked **Add**, the *Set up parental controls for* screen appears.



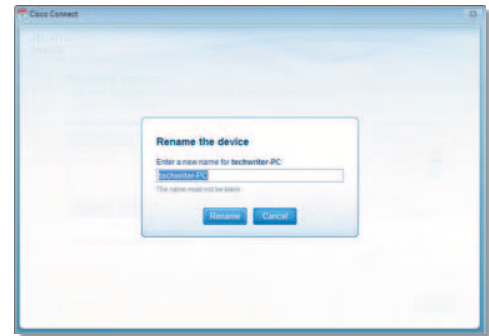
Set Up Parental Controls For

Select the computer whose parental controls you want to set up. Then click **OK**.

Remove If there is a computer that should not have parental controls applied, select the computer and click **Remove**.

Rename To give a computer a new name, select the computer and click **Rename**.

If you clicked **Rename**, the *Rename the device* screen appears.



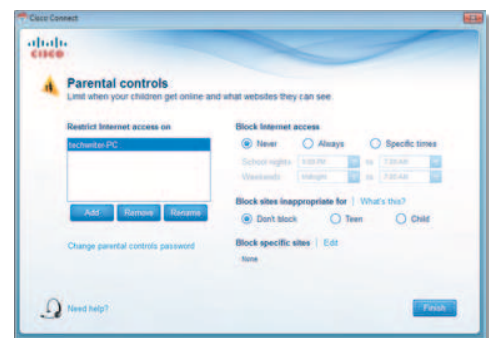
Rename the Device

Enter the new name. Then click **Rename**.

Set Up Parental Controls

To set up parental controls for a computer, follow these instructions:

1. Select the computer from the *Restrict Internet access on* list. (If the computer is not listed, click **Add** to select the computer.)

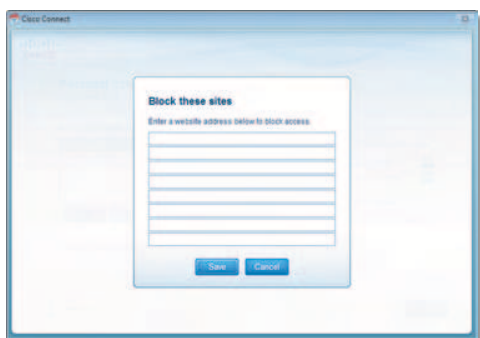


Parental Controls

2. The *Block Internet access* option offers the following:

- **Always** To always block Internet access, select this option.
- **Specific times** To block Internet access during specific days and times, select this option and set the schedule:
 - **School nights** Select the appropriate start and end times.
 - **Weekends** Select the appropriate start and end times

- **Never** To always allow Internet access, keep the default, **Never**.
3. The *Block sites inappropriate for* option allows you to block websites based on content. The following options are available:
 - **Don't Block** Does not block any websites.
 - **Teen** Blocks websites that contain content inappropriate for teenagers.
 - **Child** Blocks websites that contain content inappropriate for children.
 4. For the *Block specific sites* option, click **Edit** to create a list of websites you want to block. The default is **None**. If you clicked **Edit**, the *Block these sites* screen appears.



Block These Sites

- a. Enter a website address on each line.
 - b. Click **Save** to save your settings.
5. On the *Parental controls* screen, click **Finish** to save your settings.

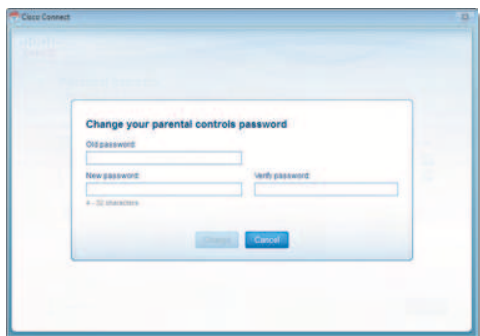


NOTE: Repeat steps 1-4 to set up parental controls for different computers.

For more information, click **Need help?**

Change Parental Controls Password

If you clicked **Change parental controls password**, the *Change your parental controls password* screen appears.



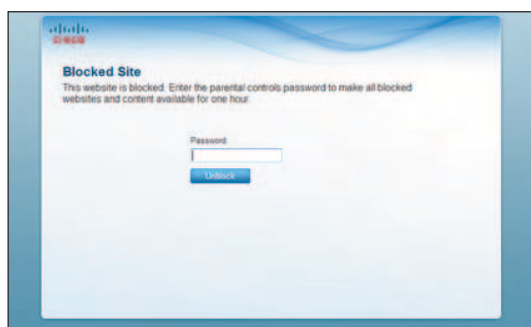
Change Your Parental Controls Password

- **Old password** Enter the old password.

- **New password** Enter a new password of 4-32 characters.
 - **Verify password** Re-enter the new password.
- Click **Change** to save your setting.

Blocked Sites

When you attempt to access a website that has been blocked on your computer, you will see a screen telling you that the site has been blocked and the reason it was blocked. You can override the blocking for an hour by entering the parental controls password in the *Password* field and clicking **Unblock**.



Blocked Site

Guest Access Settings



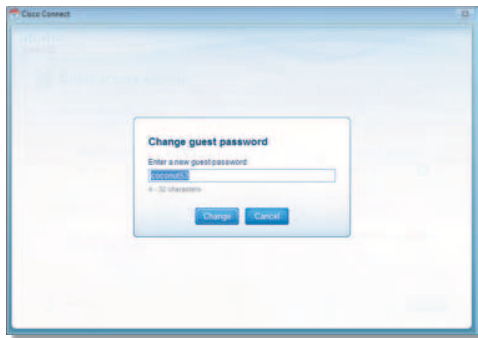
Guest Access Settings

Allow guest access By default, *Guest Access* is enabled. To disable *Guest Access*, select **no**.

Guest network name By default, the setup software sets up the name of the guest network.

Password By default, the setup software sets up the password for the guest network. To change the password, click **Change**.

If you clicked **Change**, the *Change guest password* screen appears.



Change Guest Password

- **Enter a new guest password** Enter a password of 4-32 characters.
- Click **Change** to save your setting.

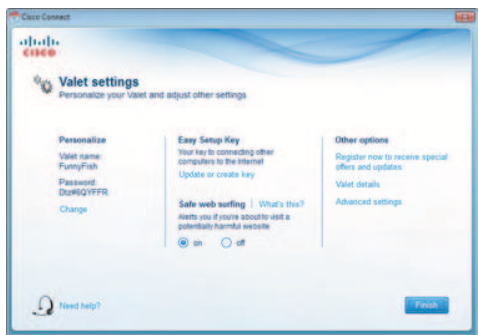
Total guests allowed By default, **5** guests are allowed Internet access through your guest network. If you want to allow more or less, select the desired number of guests from the drop-down menu; you can select up to 10 guests.



NOTE: Computers that are connected to the local network do not count towards the number of guests allowed.

Click **Finish** to save your settings.

Valet Settings



Valet Settings

Personalize

Valet name The name of your Valet is displayed (this is also the name of your wireless network). To change the name, click **Change** and go to **Change Valet Name or Password, page 11**.

Password The password that protects access to the Valet's settings is displayed (this also protects wireless access to your local network). To change the password, click **Change** and go to **Change Valet Name or Password, page 11**.

Easy Setup Key

Update or create key The Easy Setup Key is a USB flash drive that holds the settings for the Valet. To create or update the Easy Setup Key, click **Create or update key**. For more information, refer to **Update or create an Easy Setup Key, page 6**.

Safe Web Surfing

On/off Safe web surfing alerts you when you are about to visit a potentially harmful website. You can choose whether to visit the site or not. Safe web surfing is enabled by default.

Other Options

Register now to receive special offers and updates To sign up to receive special offers and updates, click this option.

Valet details To view more information about the Valet, click **Valet details** and go to **Valet Details, page 12**.

Advanced settings To access settings for advanced users, click **Advanced settings** and go to **Advanced Settings, page 12**.

Click **Finish** to save your settings.

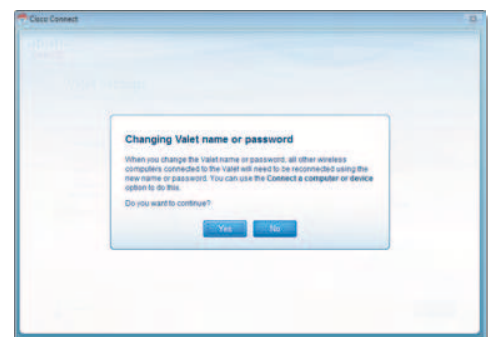
Change Valet Name or Password



NOTE: If you change the Valet name or password, then the wireless computers or other devices connected to the Valet will need to be reconnected using the new name or password (for more information, refer to **Computers and Other Devices, page 5**).

If you clicked **Change**, the *Changing Valet name or password* screen appears.

1. To change the Valet name or password, click **Yes**. Otherwise, click **No**.

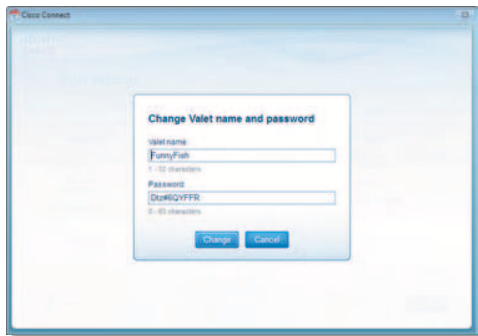


Changing Valet Name or Password

2. Complete the following:

- **Valet name** Enter a name of 1-32 characters.
- **Password** Enter a password of 8-63 characters.

- Click **Change** to save your settings.



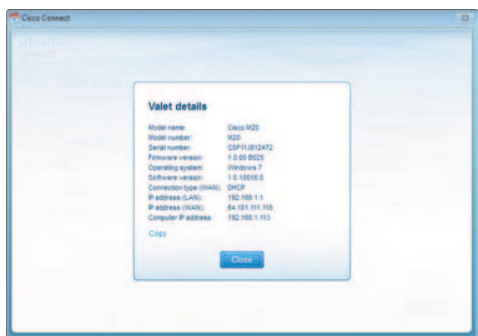
Changing Valet Name and Password

Valet Details

The *Valet details* screen appears, displaying the Model name, Model number, Serial number, Firmware version, Operating system, Software version, Connection type (WAN), IP address (LAN), IP address (WAN), and Computer IP address. (WAN stands for Wide Area Network, such as the Internet. IP stands for Internet Protocol. LAN stands for Local Area Network.)

Copy To copy the details to a text file, click **Copy** and follow these instructions:

- Open a text editor, such as Microsoft Word or Notepad.
- Go to **Edit > Paste**.
- Go to **File > Save**.



Valet Details

Click **Close** to return to the *Valet settings* screen.

Advanced Settings

If you are an advanced user, you can access the browser-based utility to access the advanced configuration settings of the Valet.

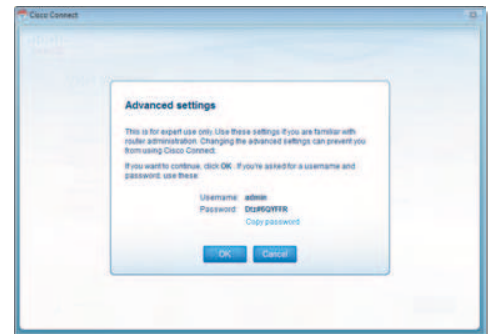


WARNING: Modifying some settings in the browser-based utility may disable settings you've already applied using the Easy Setup Key.

Username Enter this username to access the browser-based utility.

Password Enter this password to access the browser-based utility.

Copy password To copy the password to the Clipboard, click this option.



Advanced Settings

Click **OK** to open the web browser and access the browser-based utility. For more information, refer to **How to Access the Browser-Based Utility, page 13**. Click **Cancel** to return to the *Valet settings* screen.

How to Exit Cisco Connect

To exit Cisco Connect, click **Close** on the main menu.



Main Menu

How to Access Cisco Connect

Windows

To access Cisco Connect, go to **Start > All Programs > Cisco Connect**.

Mac

To access Cisco Connect, go to **Go > Applications > Cisco Connect**.