



User Guide

Linksys RE1000 | Wireless-N Extender



Contents

Chapter 1: Product Overview	1
Front	1
Top	1
Bottom	2
Chapter 2: Advanced Configuration	3
How to Access the Browser-Based Utility.	3
How to Use the Browser-Based Utility.	3
Setup > Basic Setup	4
Wireless > Site Survey.	5
Wireless > Basic Wireless Settings	5
Wireless > Wireless Security	8
Wireless > QoS	9
Administration > Management.	10
Administration > Log	10
Administration > Diagnostics	10
Administration > Factory Defaults	11
Status > Device Information.	13
Status > Ethernet Statistics	13
Status > WLAN Statistics	14
Appendix F: Specifications	15

Chapter 1: Product Overview

Thank you for choosing the Linksys RE1000 Wireless-N Extender. The Extender lets you repeat the wireless signal of any Access Point or Router to provide Internet connectivity in hard to reach areas via a wireless connection or through its Ethernet port.

Various security features help protect your data and your privacy while you are online. Security features include Wi-Fi Protected Access 2 (WPA2) security, which encrypts data on your wireless network.

Setup and use of the router is easy using Cisco Connect, the software that is installed when you run the included CD. Advanced configuration of the router is available through the provided browser-based utility. Alternatively, you can use WPS to add the RE1000 to your existing network, if your Access Point or Router supports this feature.

Front



This light indicates power or Wi-Fi Protected Setup status. If you have client devices, such as wireless printers, that support Wi-Fi Protected Setup, then you can use Wi-Fi Protected Setup to automatically configure wireless security for your wireless network. To use Wi-Fi Protected Setup, refer to **“Wi-Fi Protected Setup”** on page 12.

Power (white) When the router is powered on, resets to factory defaults, or upgrades its firmware, the light flashes slowly (every three seconds). When the router is ready for use, the light is continuously lit. If there is an error, the light flashes quickly (every second); disconnect the power adapter from your router, wait two seconds, and then reconnect the power adapter to your router.

Wi-Fi Protected Setup (white) When the Wi-Fi Protected Setup process is active, the light flashes slowly (every two seconds) for two minutes. When the Wi-Fi Protected Setup is successful, the light is continuously lit. If there is an error, the light flashes quickly (every second) for two minutes; please wait and try again.

Top




- **Wi-Fi Protected Setup Button** If you have client devices, such as wireless printers, that support Wi-Fi Protected Setup, then you can use Wi-Fi Protected Setup to automatically configure wireless security for your wireless network.

To use Wi-Fi Protected Setup, refer to **“Wi-Fi Protected Setup”** on page 12.


- **Reset** This button allows you to reset the router to its factory defaults. Press and hold the Reset button for approximately five seconds.

As an alternative, you can restore the defaults from the *Administration > Factory Defaults* screen in the router’s browser-based utility (refer to **“Administration > Factory Defaults”** on page 42).

 **Power Switch** Only featured in the European versions of the RE1000.

Bottom



 **Ethernet** (green) Using Ethernet cables (also called network cables), this Ethernet port connects Ethernet network devices to your wireless network.

The green light turns on when an Ethernet device is connected and active on this port.

Chapter 2: Advanced Configuration

After setting up the Extender with the setup software (located on the CD-ROM), the Extender will be ready for use. If you would like to change its advanced settings, use the Extender’s browser-based utility. This chapter describes each web page of the utility and each page’s key functions. You can access the utility via a web browser on a computer connected to the Extender.

How to Access the Browser-Based Utility

To access the browser-based utility, launch the web browser on your computer, and enter the Extender’s default Internet Protocol (IP) address, **192.168.1.1**, in the *Address* field. Then press **Enter**. This works only if your Extender has not been configured. If your Extender has been configured, log into your access point or router User Interface, look for the status page, locate the DHCP table using the user manual of your access point or router, and look for RE1000 in the DHCP table. The IP address should show up, make a note of it, and then enter it in your web browser link address. Then press **Enter**



NOTE: You can also access the browser-based utility on Windows computers by looking up the UPnP network devices. Double click on the RE1000 icon.

A login screen appears. (A similar screen appears for non-Windows 7 users.)



Login Screen

1. In the *User name* field, enter **admin**.
2. In the *Password* field, enter the password created by the setup software. If you did not run the setup software, then enter the default, **admin**.



NOTE: You can set a new password on the *Administration > Management* screen. Refer to “**Administration > Management**” on page 40.

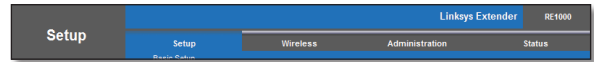
3. Click **OK** to continue.



NOTE: You can also access the browser-based utility through Cisco Connect.

How to Use the Browser-Based Utility

Use the tabs at the top of each screen to navigate within the utility. The tabs are arranged in two levels, top-level tabs for general functions and lower-level tabs for the corresponding specific functions.



Top- and Lower-Level Tabs

The top-level tabs are: *Setup*, *Wireless*, *Security*, *Administration*, and *Status*. Each of these has its own unique, lower-level tabs.



NOTE: Within this User Guide, each screen is identified by its top- and lower-level tab names. For example, “Setup > Basic Setup” is the screen accessed via the Setup top-level tab, and its Basic Setup lower-level tab.

If you change any settings on a screen, you must click **Save Settings** to apply your changes, or click **Cancel Changes** to clear your changes. These controls are located at the bottom of each screen.

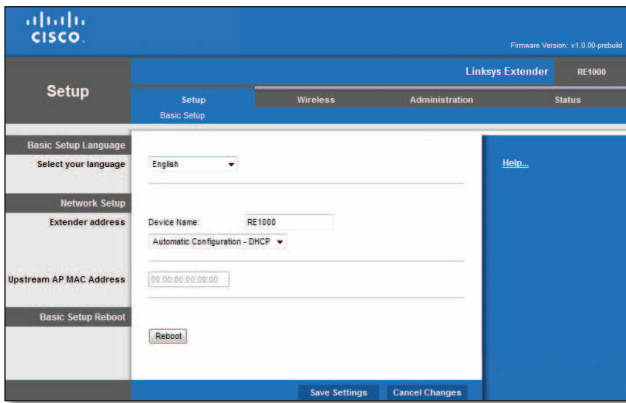


Save Settings or Cancel Settings

Click **Help** on the right side of a screen for additional information on the screen’s options.

Setup > Basic Setup

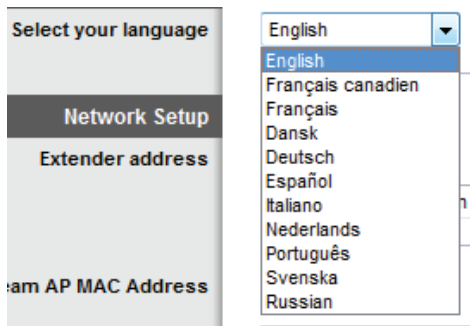
The first screen that appears is the *Basic Setup* screen. This allows you to change the Extender's general settings.



Setup > Basic Setup

Language

Select your language To use a different language, select one from the drop-down menu. The language of the browser-based utility will change five seconds after you select another language.

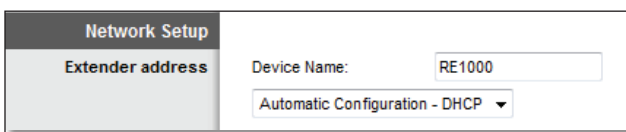


Setup > Languages

Extender Address

Automatic Configuration - DHCP

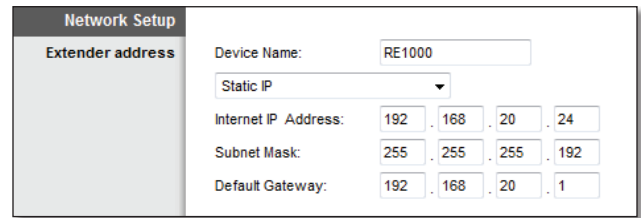
The default Extender address Type is **Automatic Configuration - DHCP** (Dynamic Host Configuration Protocol). Keep the default if you connect using a dynamic IP address. (This option usually is the default settings for most devices.)



Extender Address > Automatic Configuration - DHCP

Static IP

If you are required to use a fixed IP address to connect to the upstream access point or router, select **Static IP**.



Extender Address > Static IP

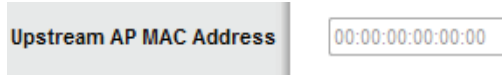
IP Address This is the Extender's IP address as seen from the upstream access point or router.

Subnet Mask This is the router's subnet mask as seen from the upstream access point or router.

Default Gateway This is the IP address of your upstream AP or router

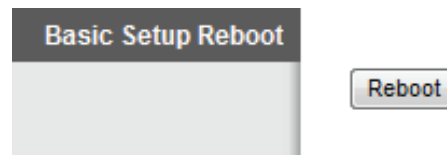
Upstream AP MAC address

This option is used when you want to select the upstream access point or router that you want your Extender to connect to. Within a group of several access point or routers all using the same SSID, you will force the Extender to connect to a specific access point or router.



Reboot

This option is used to reboot the device from within the web UI. Once Reboot is complete, you will be brought back to the Basic Setup screen

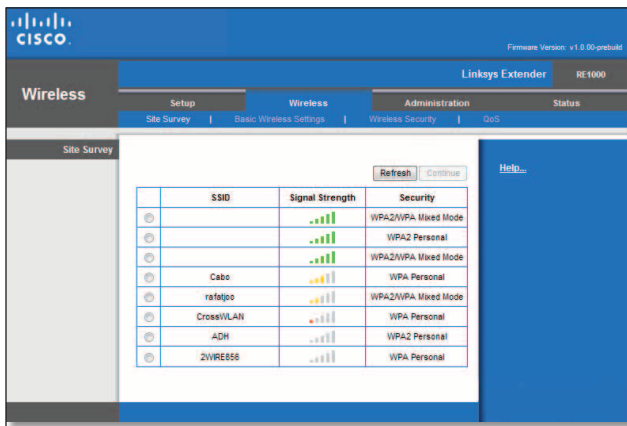


Wireless > Site Survey

The Site Survey showing all neighbouring Access Points or Routers show here.

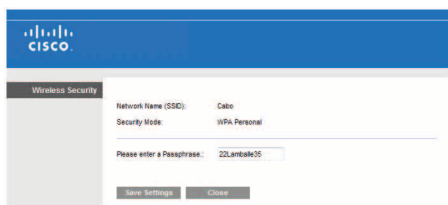
You have to make a note of the SSID and the security passphrase that your access point or router is actually configured with. This information will be useful to carry on setup after the site survey is done.

You may select the network name (SSID) that you choose to repeat with your Linksys Extender by clicking the corresponding dot on the left column



Wireless Site Survey View

Then, click on Connect, the following screen shows the SSID which you want to connect your Linksys Extender to, and prompts for the Passphrase used to secure your Wireless network. The type of security information required to be provided will depend upon you access point or router wireless security settings



Wireless Site Survey > Security View

Your Extender wireless parameters should be configured. The wireless interface is going to restart, and the Extender will associate with the access point or router you have chosen. You can check the connection status between the Extender and the upstream access point or router. Goto **“Status > WLAN Statistics”** on page 14 and check the SSID information and the signal strength.

Wireless > Basic Wireless Settings

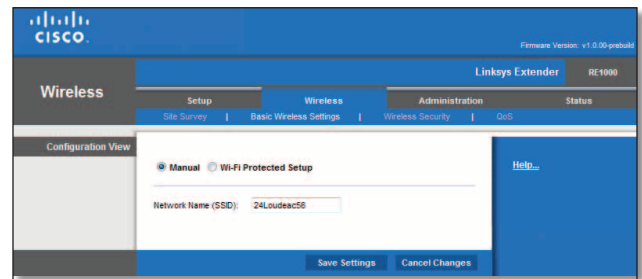
Select Manual if you wish to configure the wireless settings manually. In order to do so, you will be required to get the Wireless Network information (SSID and passphrase) from the access point or router you wan the Extender to connect to.



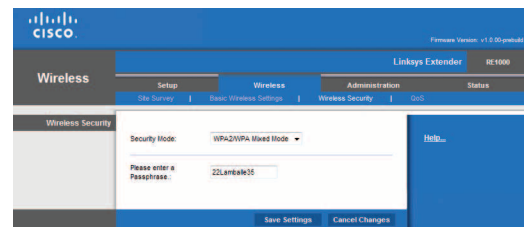
NOTE: After you set up the wireless network, set up the wireless security settings. Go to **“Wireless > Wireless Security”** on page 8.



NOTE: You can also use Wireless Protected Setup WPS method to configure your Extender automatically with your access point or router (you will not be required to provide any information on your setup). Go to **“Wi-Fi Protected Setup (Client mode for the initial setup with the access point or router”** on page 6.



Basic Wireless Settings (Manual) > Configuration View

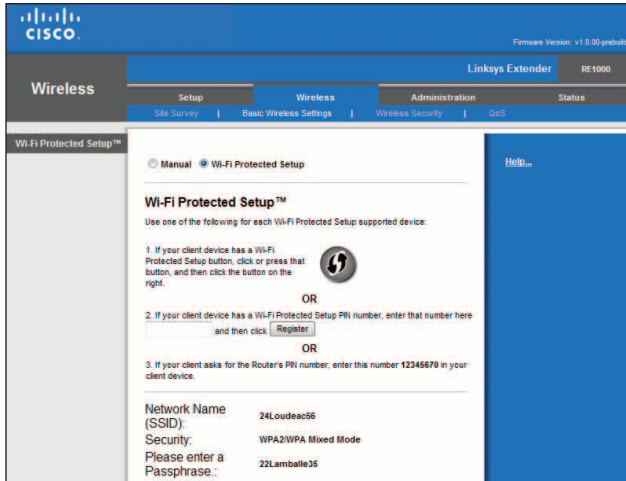


Basic Wireless Settings (Manual) > Security View

Wi-Fi Protected Setup (Client mode for the initial setup with the access point or router)

Wi-Fi Protected Setup is a feature that makes it easy to set up your wireless network. If your access point or router supports Wi-Fi Protected Setup, then you can use Wi-Fi Protected Setup.

Three methods of Wi-Fi Protected Setup are available. Use the method that applies to the Extender device you are configuring.



Wireless > Basic Wireless Settings (Wi-Fi Protected Setup)



NOTE: Wi-Fi Protected Setup configures only device at a time.

Wi-Fi Protected Setup Light Activity

- The Cisco logo on the top panel of the Extender functions as the Wi-Fi Protected Setup light.
- When the Wi-Fi Protected Setup process is active, the light flashes slowly. When the Wi-Fi Protected Setup is successful, the light is continuously lit.
- If there is an error, the light flashes quickly for two minutes; please wait and try again.
- Wait until the light is continuously lit, before starting the next Wi-Fi Protected Setup session.
- **Wi-Fi Protected Setup Button** Use this method if your client router has a Wi-Fi Protected Setup button.



NOTE: Make sure you configure one device at a time.

Wi-Fi Protected Setup™

Use one of following for each Wi-Fi Protected Setup™ supported device:

1. If your client device has a Wi-Fi Protected Setup™ button, click or press that button and then click the button on the right.



Wi-Fi Protected Setup > Wi-Fi Protected Setup Button

- a. Click or press the **Wi-Fi Protected Setup** button on the Extender.
- b. Click the **Wi-Fi Protected Setup** button on the router's *Wi-Fi Protected Setup* screen, OR press and hold the Wi-Fi Protected Setup button on the back panel of the router for one second.
- c. After the Extender has been configured, click **OK** on the router's *Wi-Fi Protected Setup* screen within two minutes.

- **Enter Extender PIN on Router** The Wi-Fi Protected Setup PIN (Personal Identification Number) can be found on the product label of the Extender .

2. If your client device has a Wi-Fi Protected Setup™ PIN number, enter that number here and then click

Wi-Fi Protected Setup > Enter Extender PIN on Router

- a. Enter the PIN from the Extender in the field on the router's *Wi-Fi Protected Setup* screen.
- b. Click the **Register** button on the router's *Wi-Fi Protected Setup* screen.
- c. After the Extender has been configured, click **OK** on the router's *Wi-Fi Protected Setup* screen within two minutes.

- **Enter Router PIN on Extender** Use this method if your Extender asks for the router's PIN.

3. If your client asks for the Router's PIN number, enter this number **76201196** in your client device.

Wi-Fi Protected Setup > Enter Router PIN on Extender

- a. On the Extender, enter the PIN listed on the router's *Wi-Fi Protected Setup* screen. (It is also listed on the bottom of the router.)
- b. After the Extender has been configured, click **OK** on the router's *Wi-Fi Protected Setup* screen within two minutes.

For each wireless network, the Network Name (SSID), Security, and Passphrase are displayed at the bottom of the screen.

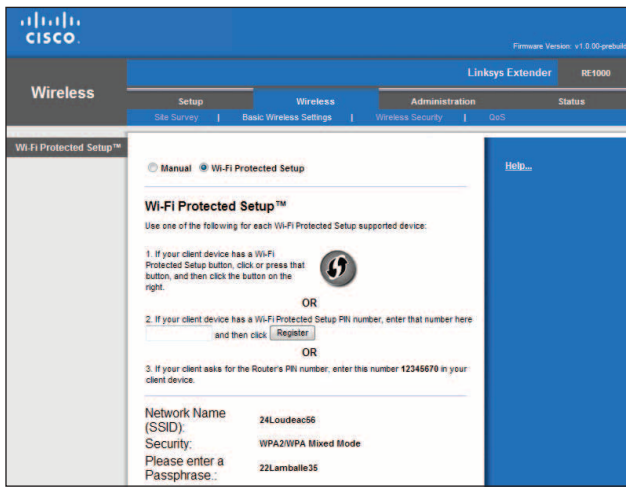


NOTE: If you have an access point or a router that do not support Wi-Fi Protected Setup, note the wireless settings, and then manually configure the Extender.

Wi-Fi Protected Setup (AP mode for adding new wireless clients behind the Extender)

Wi-Fi Protected Setup is a feature that makes it easy to set up your wireless network. If you have client devices, such as wireless printers, that support Wi-Fi Protected Setup, then you can use Wi-Fi Protected Setup.

Three methods of Wi-Fi Protected Setup are available. Use the method that applies to the client device you are configuring.



Wireless > Basic Wireless Settings (Wi-Fi Protected Setup)



NOTE: Wi-Fi Protected Setup configures one client device at a time. Repeat the instructions for each client device that supports Wi-Fi Protected Setup.

Wi-Fi Protected Setup Light Activity

- The Cisco logo on the top panel of the Extender functions as the Wi-Fi Protected Setup light.
- When the Wi-Fi Protected Setup process is active, the light flashes slowly. When the Wi-Fi Protected Setup is successful, the light is continuously lit.
- If there is an error, the light flashes quickly for two minutes; please wait and try again.
- Wait until the light is continuously lit, before starting the next Wi-Fi Protected Setup session.
- **Wi-Fi Protected Setup Button** Use this method if your client device has a Wi-Fi Protected Setup button.



NOTE: Make sure you configure one client device at a time.

Wi-Fi Protected Setup™

Use one of following for each Wi-Fi Protected Setup™ supported device:

1. If your client device has a Wi-Fi Protected Setup™ button, click or press that button and then click the button on the right.

Wi-Fi Protected Setup > Wi-Fi Protected Setup Button

- Click or press the **Wi-Fi Protected Setup** button on the client device.
 - Click the **Wi-Fi Protected Setup** button on the Extender's *Wi-Fi Protected Setup* screen, OR press and hold the Wi-Fi Protected Setup button on the top panel of the Extender for one second.
 - After the client device has been configured, click **OK** on the Extender's *Wi-Fi Protected Setup* screen within two minutes.
- **Enter Client Device PIN on Extender** Use this method if your client device has a Wi-Fi Protected Setup PIN (Personal Identification Number).

2. If your client device has a Wi-Fi Protected Setup™ PIN number, enter that number here and then click

Wi-Fi Protected Setup > Enter Client Device PIN on Extender

- Enter the PIN from the client device in the field on the Extender's *Wi-Fi Protected Setup* screen.
 - Click the **Register** button on the Extender's *Wi-Fi Protected Setup* screen.
 - After the client device has been configured, click **OK** on the Extender's *Wi-Fi Protected Setup* screen within two minutes.
- **Enter Extender PIN on Client Device** Use this method if your client device asks for the Extender's PIN.

3. If your client asks for the Router's PIN number, enter this number **76201196** in your client device.

Wi-Fi Protected Setup > Enter Extender PIN on Client Device

- On the client device, enter the PIN listed on the Extender's *Wi-Fi Protected Setup* screen. (It is also listed on the bottom of the Extender.)
- After the client device has been configured, click **OK** on the Extender's *Wi-Fi Protected Setup* screen within two minutes.

For each wireless network, the Network Name (SSID), Security, and Passphrase are displayed at the bottom of the screen.



NOTE: If you have client devices that do not support Wi-Fi Protected Setup, note the wireless settings, and then manually configure those client devices.

Wireless > Wireless Security

The wireless security settings configure the security of your wireless network(s). The Extender supports the following wireless security options: WPA2/WPA Mixed Mode, WPA2 Personal, WPA Personal and WEP. (WPA stands for Wi-Fi Protected Access. WEP stands for Wireless Equivalent Privacy.).

Wireless security is strongly recommended, and WPA2 is the strongest method available. Use WPA2 if it is supported by your Access Point or Router.

Security Options

Security Option	Strength
WPA2 Personal	Strongest
WPA2/WPA Mixed Mode	WPA2: Strongest WPA: Strong
WPA Personal	Strong
WEP	Basic

WPA2/WPA Mixed Mode

Wireless Security > WPA2/WPA Mixed Mode

Passphrase Enter a passphrase of 8-63 characters. This passphrase has to match you access point or router wireless security settings..

WPA2 Personal

Wireless Security > WPA2 Personal

Passphrase Enter a passphrase of 8-63 characters. This passphrase has to match you access point or router wireless security settings.

WPA Personal

Wireless Security > WPA Personal

Passphrase Enter a passphrase of 8-63 characters. This passphrase has to match you access point or router wireless security settings.

WEP

WEP is a basic encryption method, which is not as secure as WPA.

Wireless Security > WEP

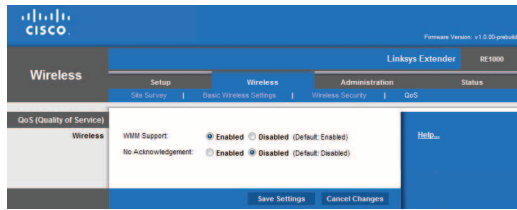
Encryption Select a level of WEP encryption, (**40/64-bit 10 hex digits**) or **104/128-bit (26 hex digits)**. The default is **40/64-bit (10 hex digits)**.

Passphrase Enter a passphrase to automatically generate WEP keys. Then click **Generate**.

Key 1-4 If you did not enter a passphrase, enter the WEP key(s) manually.

TX Key Select a default TX (Transmit) Key to use. The default is **1**.

Wireless > QoS



Wireless > QoS

WMM Support

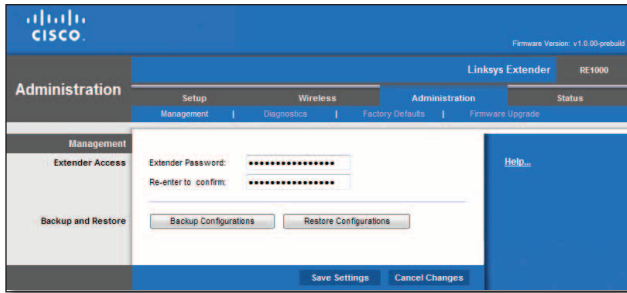
Wi-Fi Multimedia (WMM) is a wireless Quality of Service feature that improves quality for audio, video, and voice applications by prioritizing wireless traffic.

No Acknowledgement

If you want the Router to re-send data if an error occurs, keep the default, Disabled. If you do not want the Router to re-send data if an error occurs, select Enabled.

Administration > Management

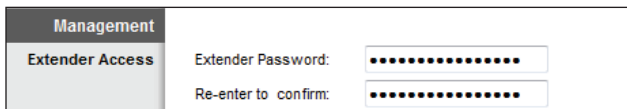
The *Management* screen allows the network's administrator to manage specific Extender functions for access and security.



Administration > Management

Management

Device Access



Management > Device Access

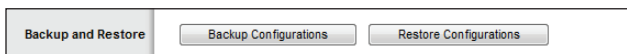
To ensure the Extender's security, you will be asked for your password when you access the Extender's browser-based utility. The default is **admin**.

If you used the setup software for installation, the default is changed to a unique password.

Extender Password Enter a new password for the Extender.

Re-enter to confirm Enter the password again to confirm.

Back Up and Restore



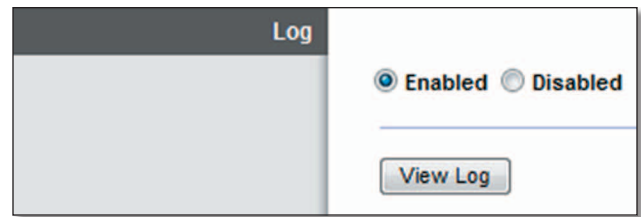
Management > Back Up and Restore

Back Up Configuration To back up the Extender's configuration settings, click this option and follow the on-screen instructions.

Restore Configuration To restore the Extender's configuration settings, click this option and follow the on-screen instructions. (You must have previously backed up the Extender's configuration settings.)

Administration > Log

The Extender can keep logs of all traffic for your Internet connection.



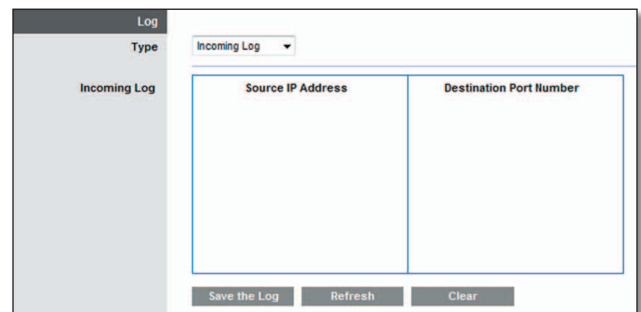
Administration > Log

Log

Enabled/Disabled To disable the Log function, select **Disabled**. To monitor traffic between the local network and the Internet, keep the default, **Enabled**. With logging enabled, you can choose to view temporary logs.

When you wish to view the logs, click **View Log**.

Log



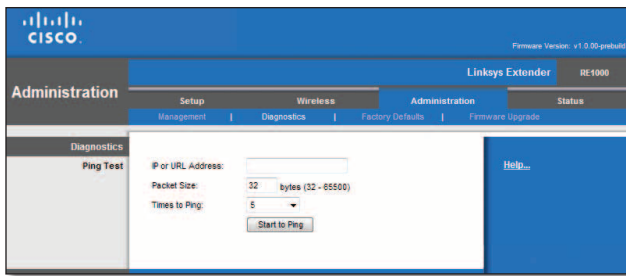
Log > View Log

- **Type** Select **Incoming Log**, **Outgoing Log**, **Security Log**, or **DHCP Client Log**.
- **<Type> Log** The Incoming Log displays a temporary log of the source IP addresses and destination port numbers for the incoming Internet traffic. The Outgoing Log displays a temporary log of the local IP addresses, destination URLs/IP addresses, and service/port numbers for the outgoing Internet traffic. The Security log displays the login information for the browser-based utility. The DHCP Client Log displays the local DHCP server status information.

Click **Save the Log** to save this information to a file on your computer's hard drive. Click **Refresh** to update the log. Click **Clear** to clear all the information that is displayed.

Administration > Diagnostics

The diagnostic tests (Ping and Traceroute) allow you to check the connections of your network devices, including connection to the Internet.



Administration > Diagnostics

Diagnostics

Ping Test

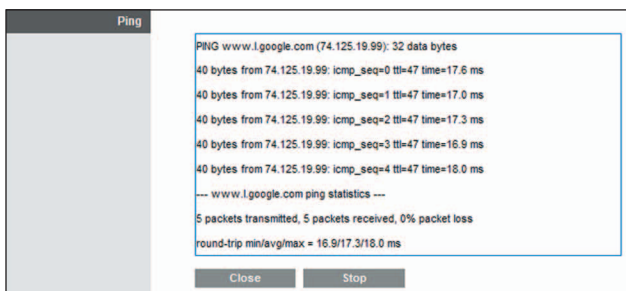
Ping checks whether the IP or URL address is reachable.

IP or URL Address Enter the IP or URL address you want to test.

Packet Size Enter the packet size you want to send. The default is **32** bytes.

Number to Ping Enter the number of times you wish to test the connection. The default is **5**.

Start Test To run the test, click this option. The *Ping* screen shows if the test is successful. Click **Close** to return to the *Diagnostics* screen. Click **Stop** to stop the test.



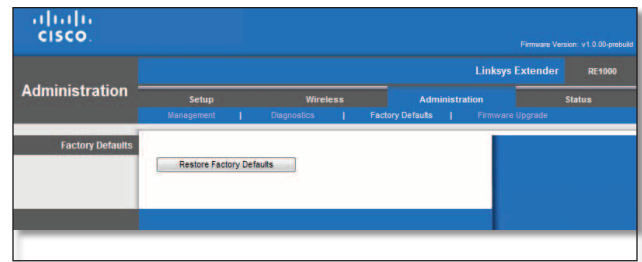
Diagnostics > Ping

Administration > Factory Defaults

The *Factory Defaults* screen allows you to restore the Extender's configuration to its factory default settings.



NOTE: Do not restore the factory defaults unless you are having difficulties with the Extender and have exhausted all other troubleshooting measures. Once the Extender is reset, you will have to re-enter all of your configuration settings.



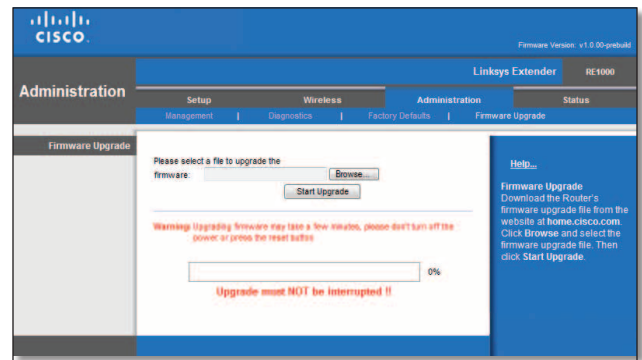
Administration > Factory Defaults

Factory Defaults

Restore Factory Defaults To reset the Extender's settings to the default values, click this option. Any settings you have saved will be lost when the default values are restored.

Administration > Firmware Upgrade

The *Firmware Upgrade* screen allows you to upgrade the Extender's firmware. Do not upgrade the firmware unless you are experiencing problems with the Extender or the new firmware has a feature you want to use.



Administration > Firmware Upgrade



NOTE: The Extender may lose the settings you have customized. Before you upgrade its firmware, write down all of your custom settings. After you upgrade its firmware, you will have to re-enter all of your configuration settings.

Firmware Upgrade

Before upgrading the firmware, download the Extender's firmware upgrade file from the website, www.linksys.com/support.

Please select a file to upgrade Click **Browse** and select the firmware upgrade file.

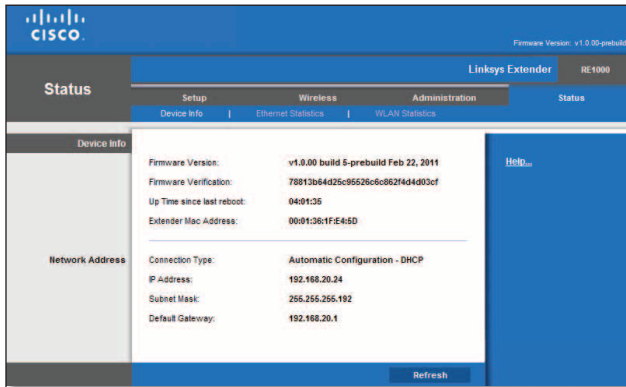
Start Upgrade After you have selected the appropriate file, click this option, and follow the on-screen instructions.



WARNING: Do not interrupt the upgrade process. You should not power off the Extender or press the Reset button during the upgrade process. Doing so may disable the Extender.

Status > Device Information

The *Device Information* screen displays information about the router and its current settings.



Status > Router

Device Information

Firmware Version The version number of the router's current firmware is displayed.

Firmware Verification The unique identifier of the firmware is displayed.

Current Time The local time is displayed.

Internet MAC Address The router's MAC address, as seen from the Internet, is displayed.

Device Name The Device Name is the NetBIOS name of the router. The default is **Cisco** followed by the last 5 digits of the router's serial number, which is found on the bottom of the router. If you used the setup software for installation, then the Device Name is the name of your wireless network (up to 15 characters).

Host Name The Host Name of the router is displayed.

Domain Name The Domain Name of the router is displayed.

Internet Connection

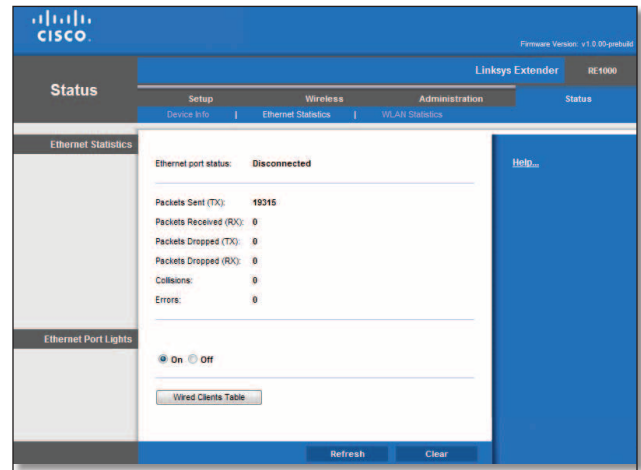
This section shows the current network information. The information varies depending on the Internet connection type selected on the *Setup > Basic Setup* screen.

For a DHCP connection, select **Release IP Address** or **Renew IP Address** as appropriate to release or renew a DHCP lease. For a PPPoE or similar connection, select **Connect** or **Disconnect** as appropriate to connect to or disconnect from the Internet.

Click **Refresh** to update the on-screen information.

Status > Ethernet Statistics

The *Ethernet Statistics* screen displays information about the local network.



Status > Local Network

Ethernet Statistics

Ethernet port status

The Status of the Extender's local Ethernet port is displayed.

Packet Sent (TX)

The number of packets transmitted is displayed.

Packets Received (RX)

The number of packets received is displayed.

Packets Dropped (TX)

The number of packets dropped on the transmit direction is displayed.

Packets Dropped (RX)

The number of packets dropped on the receive direction is displayed.

Collisions

The number of collisions occurring on the wire is displayed

Errors

The number of errors is displayed.

Ethernet Port Lights

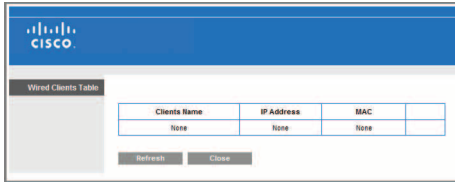


Status > Ethernet Port light

On/Off

To allow the lights on the Extender's Ethernet port to light up, keep the default, On.

Wired Clients Table

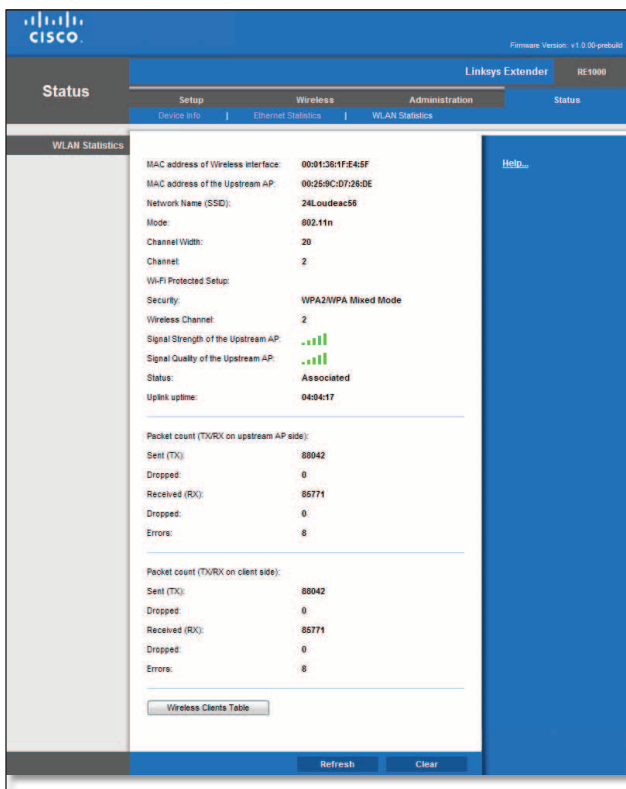


Status > Wired Clients table

The name, MAC address and Hop number information on the wired connected clients, is displayed.

Status > WLAN Statistics

The *WLAN Statistics* screen displays information about your wireless network.



Status > Wireless Network

Wireless Interface MAC Address

The MAC address of the Extender wireless interface as seen from the upstream AP, is displayed.

Upstream AP MAC Address

The MAC address of the Upstream AP connected is displayed.

Network Name (SSID)

The name of the wireless network, also called the SSID, is displayed.

Mode

The wireless mode used by the network is displayed.

Channel Width

The radio channel width used by Wireless-N devices is displayed.

Channel

The Extender's operating radio channel is displayed.

Wi-Fi Protected Setup

The Extender's Wi-Fi Protected Setup is displayed.

Security

The wireless security method used by the wireless network is displayed.

Signal Strength of the Upstream AP

The wireless security method used by the wireless network is displayed.

Signal Quality of the Upstream AP:

The wireless security method used by the wireless network is displayed.

Status

The status of the Extender wireless interface as seen from the Upstream AP: Associated, Down, Association in progress, Not configured, is displayed.

Uplink uptime

The duration that the Extender has been associated with the AP is displayed in seconds.

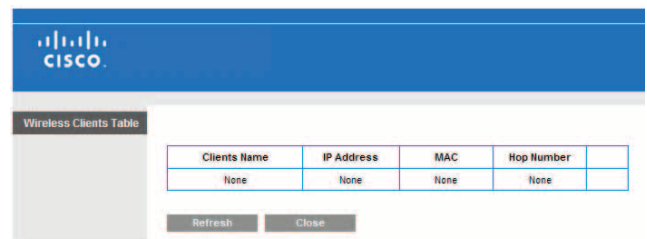
Packet Count

The number of transmitted, received, dropped and in error packets is displayed.

Packet Dropped

The number of packet dropped on the Upstream AP and on the Client sides, is displayed.

Wireless Clients Table



Status > Wireless Client Table

The name, MAC address and Hop number information on the wireless connected clients, is displayed.

Appendix F: Specifications

Model Name	Linksys RE1000
Model Description	Wireless-N Extender
Model Number	RE1000
Standards	IEEE 802.11n, 802.11g, 802.11b, 802.3u
Ports	Fast Ethernet, C7 connector for localized AC cable or clip
Buttons	Reset, Wi-Fi Protected Setup™
LEDs	Backlit Cisco logo, Ethernet (active, traffic)
Cabling Type	CAT 5
Antennas	2 (internal)
Detachable (y/n)	No
Transmitted Power	802.11n (40MHz) 15.5 ± 1.5 dBm @ CH6, mcs15 802.11n (20MHz) 17.0 ± 1.5 dBm @ CH6, mcs0-4, mcs8-12 802.11n (20MHz) 16.0 ± 1.5 dBm @ CH6, mcs5-7, mcs13-15 802.11g 18.0 ± 1.5 dBm 802.11b 18.0 ± 1.5 dBm
Receive Sensitivity	-91 dBm @ 1 Mbps -87 dBm @ 11 Mbps -71 dBm @ 54 Mbps -66 dBm @ 270 Mbps
Antenna Gain	3dBi
Wireless Security	Wi-Fi Protected Access™ 2 (WPA2), WEP
Security Key Bits	Up to 128-Bit Encryption
Environmental	
Dimensions	4.92" x 3.62" x 1.29" (125 x 92 x 33 mm)
Weight	9.9 oz (0.2806 kg)
Power	AC 100-240V, 50/60Hz, 0.5A
Certification	FCC, UL/cUL, ICES-003, RSS210, CE, Wi-Fi a/b/g/n, Wi-Fi (IEEE802.11b/g/n), WPA2™, WMM®, Wi-Fi Protected Setup™
Operating Temp.	32 to 104°F (0 to 40°C)
Storage Temp.	-4 to 140°F (-20 to 60°C)
Operating Humidity	10 to 80% Noncondensing
Storage Humidity	5 to 90% Noncondensing

Specifications are subject to change without notice.



www.linksys.com/support

Cisco, the Cisco Logo, and Linksys are trademarks or registered trademarks of Cisco and/or its affiliates in the U.S. and other countries. A listing of Cisco's trademarks can be found at www.cisco.com/go/trademarks. Third-party trademarks mentioned are the property of their respective owners. The use of the word partner does not imply a partnership relationship between Cisco and any other company.

© 2011 Cisco and/or its affiliates. All rights reserved.