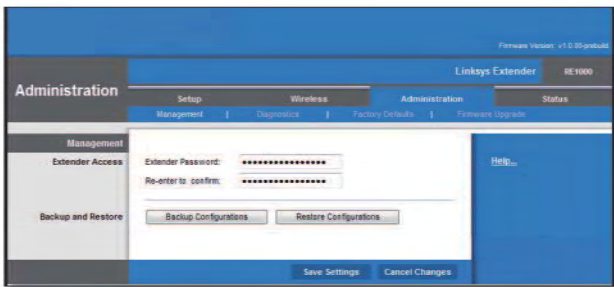


## Administration > Management

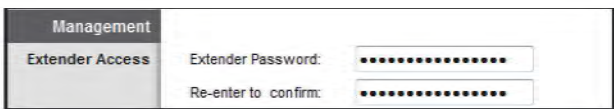
The *Management* screen allows the network's administrator to manage specific Extender functions for access and security.



Administration > Management

## Management

### Device Access



Management > Device Access

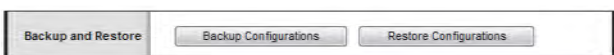
To ensure the Extender's security, you will be asked for your password when you access the Extender's browser-based utility. The default is **admin**.

If you used the setup software for installation, the default is changed to a unique password.

**Extender Password** Enter a new password for the Extender.

**Re-enter to confirm** Enter the password again to confirm.

### Back Up and Restore



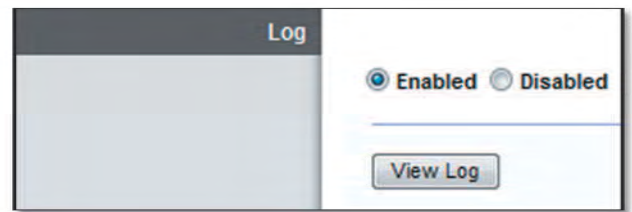
Management > Back Up and Restore

**Back Up Configuration** To back up the Extender's configuration settings, click this option and follow the on-screen instructions.

**Restore Configuration** To restore the Extender's configuration settings, click this option and follow the on-screen instructions. (You must have previously backed up the Extender's configuration settings.)

## Administration > Log

The Extender can keep logs of all traffic for your Internet connection.



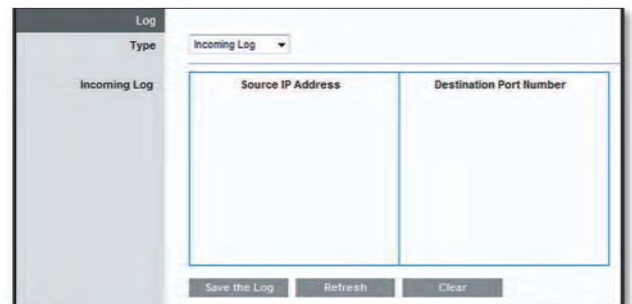
Administration > Log

## Log

**Enabled/Disabled** To disable the Log function, select **Disabled**. To monitor traffic between the local network and the Internet, keep the default, **Enabled**. With logging enabled, you can choose to view temporary logs.

When you wish to view the logs, click **View Log**.

## Log



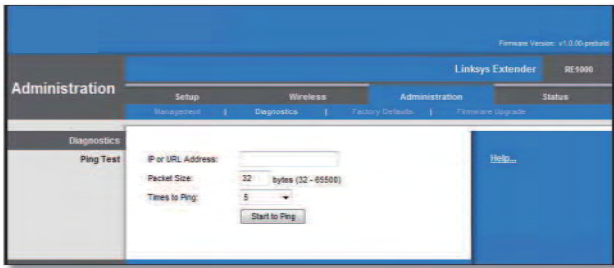
Log > View Log

- **Type** Select **Incoming Log**, **Outgoing Log**, **Security Log**, or **DHCP Client Log**.
- **<Type> Log** The Incoming Log displays a temporary log of the source IP addresses and destination port numbers for the incoming Internet traffic. The Outgoing Log displays a temporary log of the local IP addresses, destination URLs/IP addresses, and service/port numbers for the outgoing Internet traffic. The Security log displays the login information for the browser-based utility. The DHCP Client Log displays the local DHCP server status information.

Click **Save the Log** to save this information to a file on your computer's hard drive. Click **Refresh** to update the log. Click **Clear** to clear all the information that is displayed.

## Administration > Diagnostics

The diagnostic tests (Ping and Traceroute) allow you to check the connections of your network devices, including connection to the Internet.



Administration > Diagnostics

## Diagnostics

### Ping Test

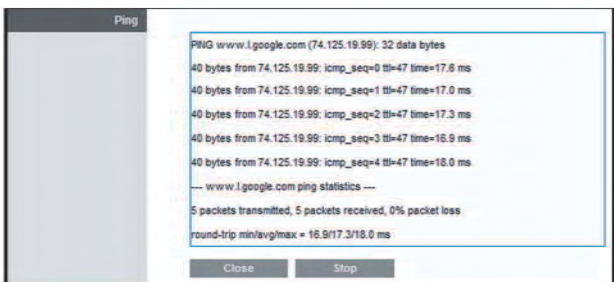
Ping checks whether the IP or URL address is reachable.

**IP or URL Address** Enter the IP or URL address you want to test.

**Packet Size** Enter the packet size you want to send. The default is **32** bytes.

**Number to Ping** Enter the number of times you wish to test the connection. The default is **5**.

**Start Test** To run the test, click this option. The *Ping* screen shows if the test is successful. Click **Close** to return to the *Diagnostics* screen. Click **Stop** to stop the test.



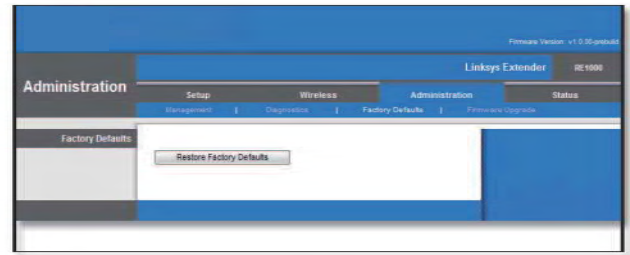
Diagnostics > Ping

## Administration > Factory Defaults

The *Factory Defaults* screen allows you to restore the Extender's configuration to its factory default settings.



**NOTE:** Do not restore the factory defaults unless you are having difficulties with the Extender and have exhausted all other troubleshooting measures. Once the Extender is reset, you will have to re-enter all of your configuration settings.



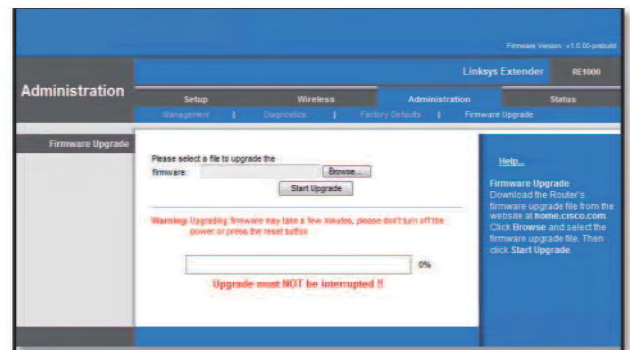
Administration > Factory Defaults

## Factory Defaults

**Restore Factory Defaults** To reset the Extender's settings to the default values, click this option. Any settings you have saved will be lost when the default values are restored.

## Administration > Firmware Upgrade

The *Firmware Upgrade* screen allows you to upgrade the Extender's firmware. Do not upgrade the firmware unless you are experiencing problems with the Extender or the new firmware has a feature you want to use.



Administration > Firmware Upgrade



**NOTE:** The Extender may lose the settings you have customized. Before you upgrade its firmware, write down all of your custom settings. After you upgrade its firmware, you will have to re-enter all of your configuration settings.

## Firmware Upgrade

Before upgrading the firmware, download the Extender's firmware upgrade file from the website, [www.linksys.com/support](http://www.linksys.com/support).

**Please select a file to upgrade** Click **Browse** and select the firmware upgrade file.

**Start Upgrade** After you have selected the appropriate file, click this option, and follow the on-screen instructions.



---

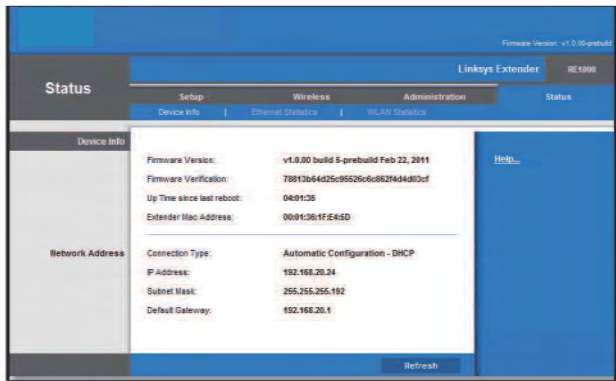
**WARNING:** Do not interrupt the upgrade process. You should not power off the Extender or press the Reset button during the upgrade process. Doing so may disable the Extender.

---



## Status > Device Information

The *Device Information* screen displays information about the router and its current settings.



Status > Router

### Device Information

**Firmware Version** The version number of the router's current firmware is displayed.

**Firmware Verification** The unique identifier of the firmware is displayed.

**Current Time** The local time is displayed.

**Internet MAC Address** The router's MAC address, as seen from the Internet, is displayed.

**Device Name** The Device Name is the NetBIOS name of the router. The default is RE3000W, followed by the last 5 digits of the router's serial number, which is found on the bottom of the router. If you used the setup software for installation, then the Device Name is the name of your wireless network (up to 15 characters).

**Host Name** The Host Name of the router is displayed.

**Domain Name** The Domain Name of the router is displayed.

### Internet Connection

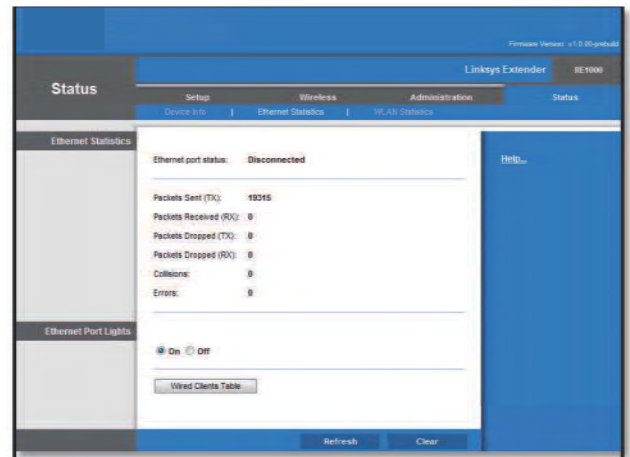
This section shows the current network information. The information varies depending on the Internet connection type selected on the *Setup > Basic Setup* screen.

For a DHCP connection, select **Release IP Address** or **Renew IP Address** as appropriate to release or renew a DHCP lease. For a PPPoE or similar connection, select **Connect** or **Disconnect** as appropriate to connect to or disconnect from the Internet.

Click **Refresh** to update the on-screen information.

## Status > Ethernet Statistics

The *Ethernet Statistics* screen displays information about the local network.



Status > Local Network

### Ethernet Statistics

#### Ethernet port status

The Status of the Extender's local Ethernet port is displayed.

#### Packet Sent (TX)

The number of packets transmitted is displayed.

#### Packets Received (RX)

The number of packets received is displayed.

#### Packets Dropped (TX)

The number of packets dropped on the transmit direction is displayed.

#### Packets Dropped (RX)

The number of packets dropped on the receive direction is displayed.

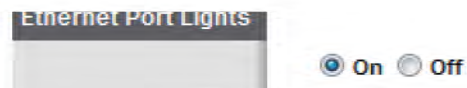
#### Collisions

The number of collisions occurring on the wire is displayed

#### Errors

The number of errors is displayed.

### Ethernet Port Lights

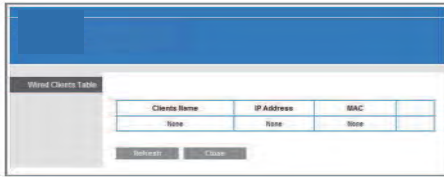


Status > Ethernet Port light

#### On/Off

To allow the lights on the Extender's Ethernet port to light up, keep the default, On.

### Wired Clients Table

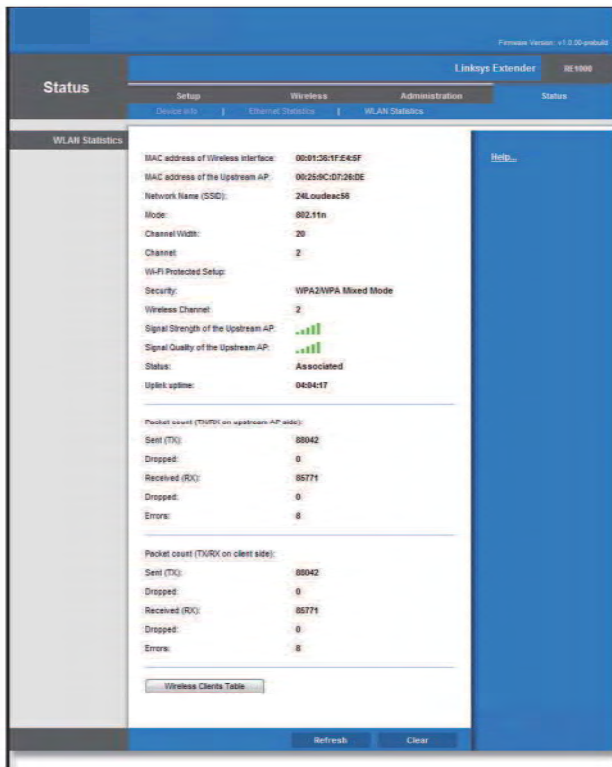


Status > Wired Clients table

The name, MAC address and Hop number information on the wired connected clients, is displayed.

### Status > WLAN Statistics

The *WLAN Statistics* screen displays information about your wireless network.



Status > Wireless Network

#### Wireless Interface MAC Address

The MAC address of the Extender wireless interface as seen from the upstream AP, is displayed.

#### Upstream AP MAC Address

The MAC address of the Upstream AP connected is displayed.

#### Network Name (SSID)

The name of the wireless network, also called the SSID, is displayed.

#### Mode

The wireless mode used by the network is displayed.

Wireless-N Extender

### Channel Width

The radio channel width used by Wireless-N devices is displayed.

### Channel

The Extender's operating radio channel is displayed.

### Wi-Fi Protected Setup

The Extender's Wi-Fi Protected Setup is displayed.

### Security

The wireless security method used by the wireless network is displayed.

### Signal Strength of the Upstream AP

The wireless security method used by the wireless network is displayed.

### Signal Quality of the Upstream AP:

The wireless security method used by the wireless network is displayed.

### Status

The status of the Extender wireless interface as seen from the Upstream AP: Associated, Down, Association in progress, Not configured, is displayed.

### Uplink uptime

The duration that the Extender has been associated with the AP is displayed in seconds.

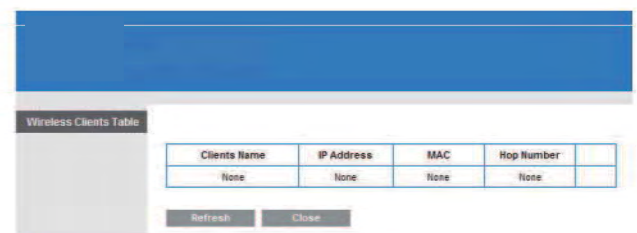
### Packet Count

The number of transmitted, received, dropped and in error packets is displayed.

### Packet Dropped

The number of packet dropped on the Upstream AP and on the Client sides, is displayed.

### Wireless Clients Table



Status > Wireless Client Table

The name, MAC address and Hop number information on the wireless connected clients, is displayed.

## **Federal Communication Commission Interference Statement**

This device complies with Part 15 of the FCC Rules. Operation is subject to the following two conditions: (1) This device may not cause harmful interference, and (2) this device must accept any interference received, including interference that may cause undesired operation.

This equipment has been tested and found to comply with the limits for a Class B digital device, pursuant to Part 15 of the FCC Rules. These limits are designed to provide reasonable protection against harmful interference in a residential installation. This equipment generates, uses and can radiate radio frequency energy and, if not installed and used in accordance with the instructions, may cause harmful interference to radio communications. However, there is no guarantee that interference will not occur in a particular installation. If this equipment does cause harmful interference to radio or television reception, which can be determined by turning the equipment off and on, the user is encouraged to try to correct the interference by one of the following measures:

- Reorient or relocate the receiving antenna.
- Increase the separation between the equipment and receiver.
- Connect the equipment into an outlet on a circuit different from that to which the receiver is connected.
- Consult the dealer or an experienced radio/TV technician for help.

FCC Caution: Any changes or modifications not expressly approved by the party responsible for compliance could void the user's authority to operate this equipment.

This transmitter must not be co-located or operating in conjunction with any other antenna or transmitter.

### **Radiation Exposure Statement:**

This equipment complies with FCC radiation exposure limits set forth for an uncontrolled environment. This equipment should be installed and operated with minimum distance 20cm between the radiator & your body.

**Industry Canada statement:**

This device complies with RSS-210 of the Industry Canada Rules. Operation is subject to the following two conditions: (1) This device may not cause harmful interference, and (2) this device must accept any interference received, including interference that may cause undesired operation.

Ce dispositif est conforme à la norme CNR-210 d'Industrie Canada applicable aux appareils radio exempts de licence. Son fonctionnement est sujet aux deux conditions suivantes: (1) le dispositif ne doit pas produire de brouillage préjudiciable, et (2) ce dispositif doit accepter tout brouillage reçu, y compris un brouillage susceptible de provoquer un fonctionnement indésirable.

**Radiation Exposure Statement:**

This equipment complies with IC radiation exposure limits set forth for an uncontrolled environment. This equipment should be installed and operated with minimum distance 20cm between the radiator & your body.

**Déclaration d'exposition aux radiations:**

Cet équipement est conforme aux limites d'exposition aux rayonnements IC établies pour un environnement non contrôlé. Cet équipement doit être installé et utilisé avec un minimum de 20 cm de distance entre la source de rayonnement et votre corps.