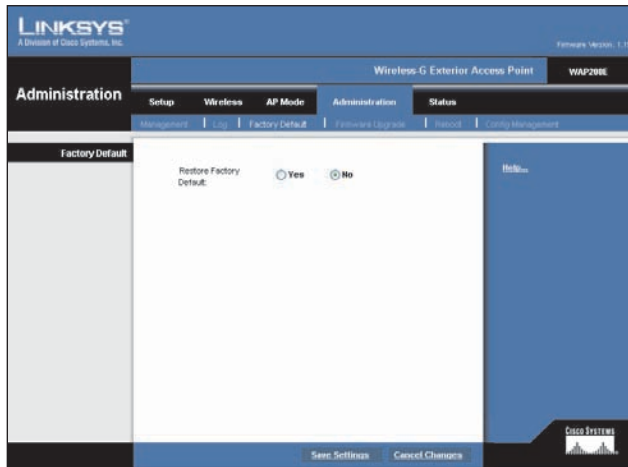


## Administration > Factory Default

On this screen you can restore the Access Point's factory default settings.



Administration > Factory Default

### Factory Default

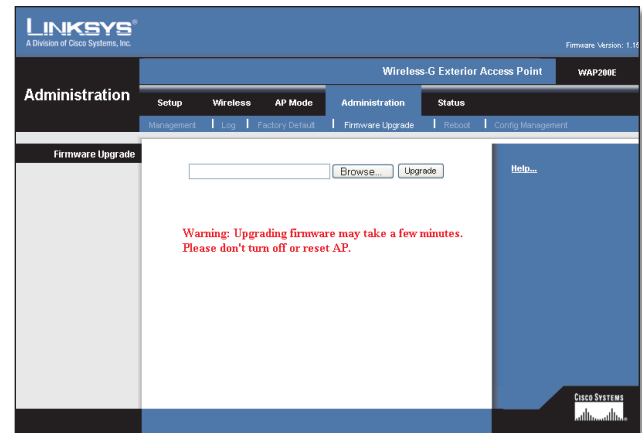
Note any custom settings before you restore the factory defaults. Once the Access Point is reset, you will have to re-enter all of your configuration settings.

**Restore Factory Defaults** To restore the Access Point's factory default settings, click the Yes radio button. Then, click **Save Settings**. Your Access Point will reboot and come back up with the factory default settings in a few seconds.

Click **Save Settings** to apply your change, or click **Cancel Changes** to cancel your change. Help information is available on the right side of the screen.

## Administration > Firmware Upgrade

On this screen you can upgrade the Access Point's firmware. Do not upgrade the firmware unless you are experiencing problems with the Access Point or the new firmware has a feature you want to use.



Administration > Firmware Upgrade

### Firmware Upgrade

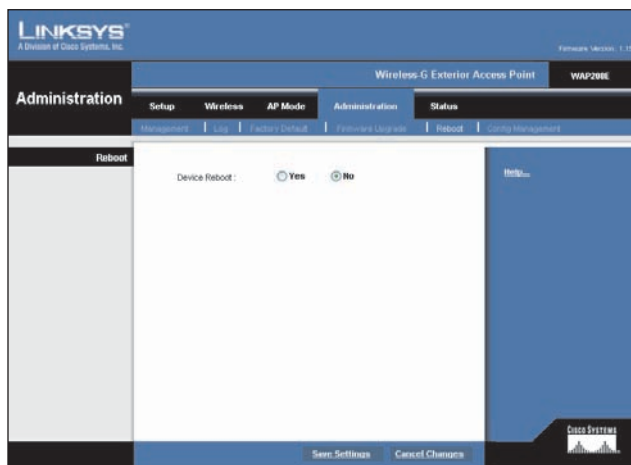
Before you upgrade the Access Point's firmware, note all of your custom settings. After you upgrade its firmware, you may have to re-enter all of your configuration settings. To upgrade the Access Point's firmware:

1. Download the firmware upgrade file from the Linksys website, [www.linksys.com](http://www.linksys.com).
2. Extract the firmware upgrade file on your computer.
3. On the Firmware Upgrade screen, enter the location of the firmware upgrade file in the field provided, or click the **Browse** button to find the file.
4. Click the **Upgrade** button, and follow the on-screen instructions.

Help information is available on the right side of the screen.

## Administration > Reboot

On this screen you can reboot the Access Point.



Administration > Reboot

## Reboot

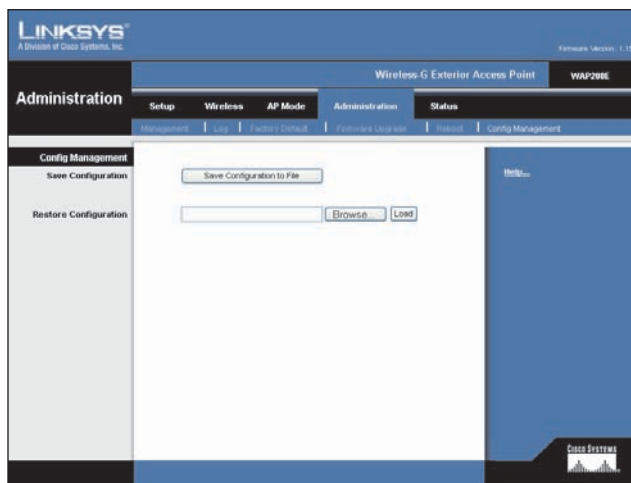
This feature is useful when you need to remotely reboot the Access Point.

**Device Reboot** To reboot the Access Point, click the **Yes** option.

Click **Save Settings** to apply your change and the Access Point will reboot itself, or click **Cancel Changes** to cancel your change. Help information is available on the right side of the screen.

## Administration > Config Management

On this screen you can create a backup configuration file or save a configuration file to the Access Point.



Administration > Config Management

## Config Management

Use this screen to upload or download configuration files for the Access Point.

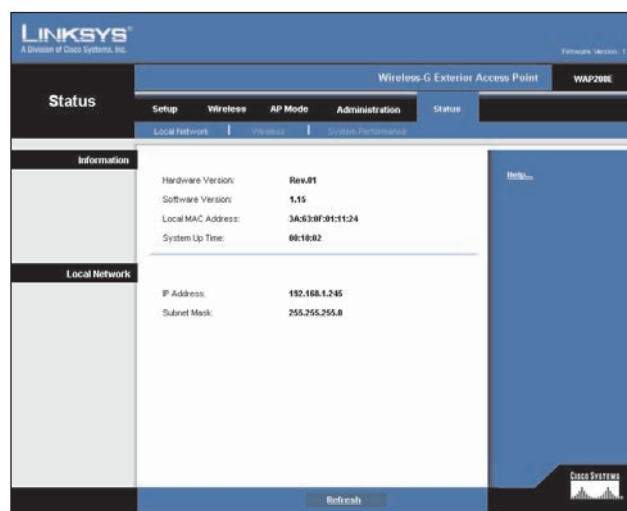
**Save Configuration** To save a backup configuration file on a computer, click the Save Configuration to File button and follow the on-screen instructions.

**Restore Configuration** To upload a configuration file to the Access Point, enter the location of the configuration file in the field provided, or click the Browse button to find the file. Then click the Load button.

Help information is available on the right side of the screen.

## Status > Local Network

The Local Network screen displays the Access Point's current status information for the local network.



## Information

**Hardware Version** This is the version of the Access Point's current hardware.

**Software Version** This is the version of the Access Point's current software.

**Local MAC Address** The MAC address of the Access Point's Local Area Network (LAN) interface is displayed here.

**System Up Time** This is the length of time the Access Point has been running.

## Local Network

**IP Address** This shows the Access Point's IP Address, as it appears on your local network.