

Chapter 2: Getting to Know the Wireless-B Media Link for Music or the Wireless-B Music System

Front Panel

You can control the Media Link through the front panel buttons and LCD screen, which you can also control using the Remote Controller. The arrow buttons enable you to navigate through the LCD menus.

- (Up and Down)** To the left of the LCD screen, the up and down arrow buttons allow you to scroll through a menu. While music is playing, they also act as volume control buttons.
- (Play/Pause)** To the right of the LCD screen, the left arrow/pause button allows you to play or pause a music track.
- (Stop)** The square button stops the playing of the selected music track.
- (Left and Right)** The left arrow button allows you to cancel a selection or move back through the menus. The right arrow button allows you to make a selection or move forward through the menus.
- (Power)** The power button allows you to power on and off the Media Link.



Figure 2-1: Media Link Front Panel

Back Panel

On the Media Link's back panel, there is an inset that features six ports, a crossover (X-II) switch, and a Reset button.

- Power** The **Power** port is where you will connect the Media Link's power adapter.
- Speaker DC** The **Speaker DC** port is where you will connect the speaker power cord (WMLS11B only).



IMPORTANT: The only speaker you should connect to the Speaker DC port is the right speaker included with the Wireless-B Music System (WMLS11B). Do not connect your own powered speakers to the Media Link's Speaker DC port; otherwise, the Media Link and your powered speakers may be severely damaged.

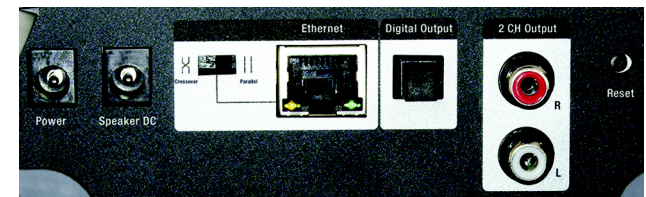


Figure 2-2: Media Link Back Panel

Ethernet: an IEEE standard network protocol that specifies how data is placed on and retrieved from a common transmission medium.

Wireless-B Media Link for Music

- Crossover** The **Crossover (X-II)** switch is used only when the Media Link is connected to a wired network device. If the Media Link is connected to a PC, then the switch should be in the Crossover (X) position. If the Media Link is connected to a router or switch, then the switch should be in the Parallel (II) position.
- Ethernet** The **Ethernet** port is where you will connect the Ethernet network cable.
- Digital Output** The **Digital Output** port is where you will connect the optical cable.
- 2 CH Output** The **2 CH Output** ports are where you will connect the left and right RCA audio cables.
- Reset** The **Reset** button is what you will push if you need to reset the Media Link.



NOTE: When you want to reset the Media Link to its factory default settings, which are listed below, press the **Reset** button and hold it in for five seconds.

- TCP/IP setting: DHCP
- mode setting: infrastructure
- SSID: any
- WEP encryption setting: disabled

Remote Controller

The Media Link includes a Remote Controller, a convenient way to control the Media Link. Use it to navigate through the menus and make selections on the front panel LCD screen.

Before using the Remote Controller, insert the included AAA batteries into the battery compartment. Make sure you align the batteries according to the compartment's diagram.

Here are descriptions of the remote's various buttons:

- Power** This turns the Media Link on or off.
- Menu** It displays the main menu.
- Playlist** This displays the Playlist menu.
- Favorites** It displays the Favorites menu.
- Browse** It displays the Browse menu.

TCP/IP (Transmission Control Protocol/Internet Protocol): a set of instructions PCs use to communicate over a network.

Infrastructure: a wireless network that is bridged to a wired network via an access point.

SSID: your wireless network's name.

WEP (Wired Equivalent Privacy): a method of encrypting data transmitted on a wireless network for greater security.



Figure 2-3: Remote Controller

Wireless-B Media Link for Music

- Select/arrows** Use the Select or right arrow button to make a selection, like the Enter key on your computer's keyboard. Use the arrow keys to move through menus.
- Page up/down** Use these buttons to page or scroll through an extensive menu.
- Volume up/down** Press these buttons to control the volume.
- Play/Pause** It plays or pauses the selected music track.
- Stop** This stops the playing of a music track.
- Mute** Use these button to instantaneously silence the music track being played. Press it again to restore the initial volume setting.
- Previous** Press this button to switch to a previous music track.
- Forward** Press this button to go forward within the same music track.
- Next** Press this button to switch to the next music track.
- Setup** Use this button to view the *Network Setup* screen. For more details, refer to "Chapter 5: Connecting the Wireless-B Media Link for Music to Your Audio System."
- Server** Use this button to view the *Media Server* screen. For more details, refer to "Chapter 6: Using the LCD Menus of the Wireless-B Media Link for Music."
- iRadio** Use this button to view the Internet Radio screen. For more details, refer to "Chapter 6: Using the LCD Menus of the Wireless-B Media Link for Music."
- Repeat** If you want to hear a music track played again, press this button. Press it again to repeat an entire album or playlist.
- Shuffle** Press this button to shuffle the playing order of selected music tracks, so they will play in a random sequence.

Speakers (Optional)

The Wireless-B Music System (model number WMLS11B) comes with the Media Link and two speakers. The Media Link can be connected to its speakers and/or a stereo.

Right Speaker

On the back of the right speaker are four ports.

INPUT (L and R) These **INPUT** ports are where you will connect the RCA audio cables from the Media Link.

CONNECT TO LEFT SPEAKER The **Connect to left speaker** port is where you will connect the RCA speaker cable.

DC 12V The **DC 12V** port is where you will connect the speaker power cord.

Left Speaker

On the back of the left speaker is one port.

CONNECT FROM RIGHT SPEAKER The **CONNECT FROM RIGHT SPEAKER** port is where you will connect the RCA speaker cable.

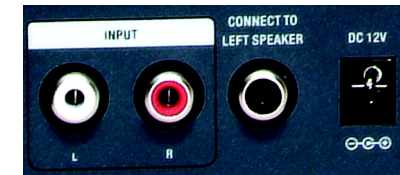


Figure 2-4: Right Speaker Back Panel



Figure 2-5: Left Speaker Back Panel

Chapter 3: Connecting the Wireless-B Media Link for Music to Your Network for Setup

Overview

This chapter will explain how to connect the Media Link to your wired computer or network for setup.

If you want to set up the Media Link using its front panel LCD screen (without using your computer), then proceed to “Chapter 5: Connecting the Wireless-B Media Link for Music to Your Audio System.”

Connection to a Wired Network for Setup

1. Connect the included Ethernet network cable to an Ethernet (LAN) port on your PC, router, or switch.
2. Connect the other end of the cable to the Ethernet port on the Media Link's back panel.
3. If you have connected the Media Link to your PC, then move the Media Link's crossover (X-II) switch to the Crossover (X) position.

If you have connected the Media Link to your router or switch, then move the crossover (X-II) switch to the Parallel (II) position.

4. Plug the power adapter into the Media Link's Power port, and plug the other end into an electrical outlet.
5. The Media Link will automatically power on, and the green LED adjacent to the Ethernet port will light up.



Figure 3-1: Connect the Ethernet Network Cable



Figure 3-2: Connect the Media Link's Power

Wireless-B Media Link for Music

6. Insert the bottom panel of the Media Link into the base plate.
7. Snap the Media Link into the base, so it fits snugly.

Proceed to **“Chapter 4: Setting up the Wireless-B Media Link for Music.”**



Figure 3-3: Insert the Base Plate

Chapter 4: Setting up the Wireless-B Media Link for Music

Overview

This chapter will describe how to set up the Media Link using the Wireless-B Media Link for Music Setup Wizard. Linksys recommends using the Setup Wizard, which will guide you through the configuration procedure. However, if you want to set up the Media Link using the front panel LCD screen (without a wired connection to a computer), refer to “Chapter 5: Connecting the Wireless-B Media Link for Music to Your Audio System.”

Before setting up the Media Link, decide whether the Media Link will be connected to your wireless or wired network AFTER you have configured it. For more information, refer to “Appendix C: Planning Your Use of the Wireless-B Media Link for Music.”

When you run the Setup Wizard, you will be asked to install the Media Server software on your PC. You must install this software so your PC can send music to the stereo via the Media Link.

Running the Setup Wizard

1. Insert the Setup CD-ROM into your PC’s CD-ROM drive. The Setup Wizard should run automatically, and the *Welcome* screen should appear. If it does not, click the **Start** button and choose **Run**. In the field that appears, enter **D:\setup.exe** (where “D” is the letter of your CD-ROM drive).
 - **Setup** - Click the **Setup** button to begin the installation process.
 - **Install Media Server**- Click the **Install Media Server** button to install the Media Server on your PC. (You will also be asked to install the Media Server at the end of the Setup Wizard.)
 - **Media Services**- Click the **Media Services** button to sign up for a free trial of the Rhapsody subscription service or visit vTuner’s website for more information. (The *Media Services* screen also appears during the Setup Wizard.)
 - **User Guide** - Click the **User Guide** button to open the PDF file of this User Guide.
 - **Exit** - Click the **Exit** button to exit the Setup Wizard.
2. To install the Media Link, click the **Setup** button on the *Welcome* screen.



Figure 4-1: Welcome Screen

Wireless-B Media Link for Music

3. Read the License Agreement, and click **Next** if you accept the Agreement. If you do not accept the Agreement, then click **Cancel** to end the installation of the Media Link.
4. Make sure the Media Link's green Ethernet LED is solidly lit. (This LED is located next to the Ethernet port on the back panel.) This indicates that the Media Link is properly connected to your wired network. Then click **Next** to continue.

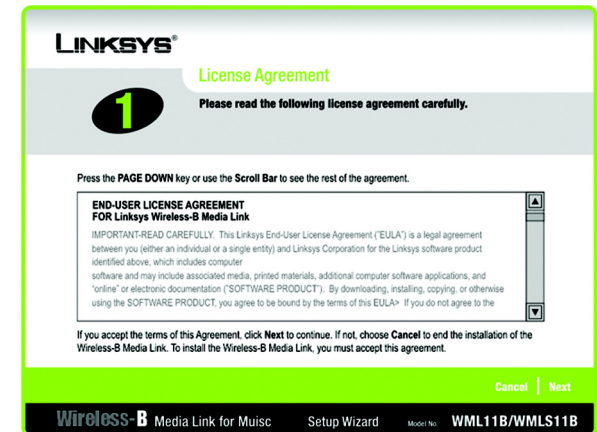


Figure 4-2: License Agreement Screen

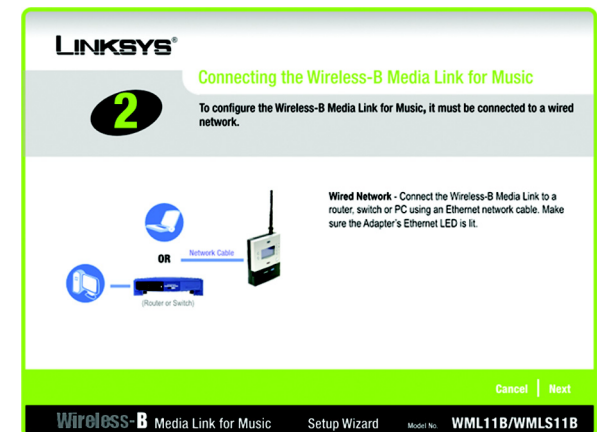


Figure 4-3: Connection for Setup Screen

Wireless-B Media Link for Music

- The screen shown in Figure 4-4 displays a list of Wireless-B Media Links for Music that have been found on your network, along with the settings for the Media Link whose name is highlighted. To select the Media Link you are currently installing, click its name in the *Adapters Found* box. Then click **Next**.
- On the screen shown in Figure 4-5, choose whether the Media Link will be connected to your wireless or wired network AFTER you have configured it.

If you will connect the Media Link to your PC or access point/router wirelessly, then click the **Yes** button for the *Wireless network* choice.

If you will connect the Media Link to your PC or router/switch using an Ethernet network cable, then click the **Yes** button for the *Wired network* choice.

Click **Next**.



NOTE: For more information, refer to “Appendix C: Planning Your Use of the Wireless-B Media Link for Music.”

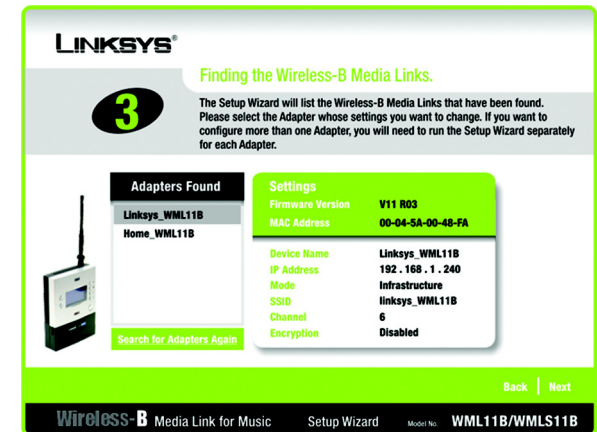


Figure 4-4: Media Link Selection Screen

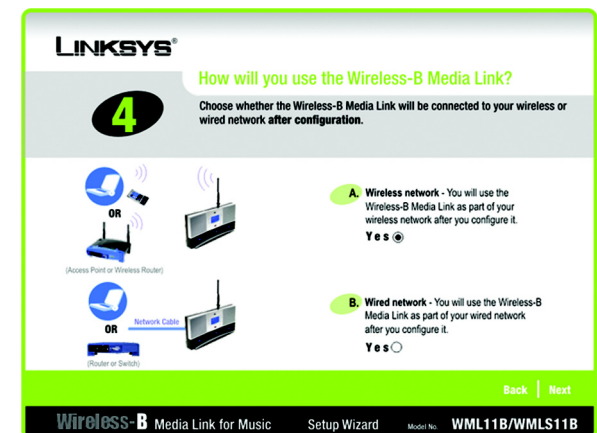


Figure 4-5: Connection after Setup Screen

7. On the *Basic Settings* screen, enter a unique name for the Media Link in the *Device Name* field.

If your network has a router or other DHCP server, select **Automatic** for the Network Setting, and click **Next**.

If the Media Link requires a static IP address, select **Static IP** for the Network Setting. Enter a unique IP Address that is in the range of IP addresses appropriate for your network. In the *Subnet Mask*, *Default Gateway*, and *DNS Server* fields, enter the Subnet Mask, Default Gateway address, and DNS Server address of your network; all devices on your network must use the same Subnet Mask, Default Gateway, and DNS Server. You must specify an IP Address, Subnet Mask, Default Gateway, and DNS Server for the Media Link on this screen if it will use a static IP address. Then click **Next**.



NOTE: If you set a static IP address on the Media Link, then you may also need to set a static IP address on your PC. For instructions, refer to Windows Help.

8. If you will connect the Media Link to your PC or router using an Ethernet network cable AFTER configuration, then go to step 10.

If you will connect the Media Link to your PC or router wirelessly AFTER configuration, then the *Basic Wireless Settings* screen will appear.

The Mode setting shows a choice of two wireless modes. Select **Infrastructure** if you want the Media Link to communicate using an access point or wireless router. Select **Ad-Hoc** if you want the Media Link to communicate directly with a wireless PC.

In the *SSID* field, enter your wireless network's SSID or name. This is the unique name shared by all devices in a wireless network. The SSID is case-sensitive and should have 32 characters or fewer.

If your network uses WEP encryption, select **Enable**. If not, select **Disable**, and go to step 10.

Click **Next**.

Figure 4-6: Basic Settings Screen

Static IP address: a fixed address assigned to a computer or device connected to a network.

Figure 4-7: Basic Wireless Settings Screen

Ad-hoc: a group of wireless devices communicating directly to each other (peer-to-peer) without the use of an access point.

Infrastructure: configuration in which a wireless network is bridged to a wired network via an access point.

SSID: your wireless network's name.