

Encryption

If you want to change the Media Link's encryption settings, select **Encryption**. You will see four choices: WEP (Wired Equivalent Privacy), Key Entry Method, Key Size, and Key.

WEP - To enable or disable WEP encryption, select **WEP**. To enable WEP encryption, select **Enable**. To disable WEP encryption, select **Disable**. Your selection will be denoted by a bracketed asterisk, [*]. Press the right arrow button to save your new setting. Press the left arrow button to cancel your change.

Key Entry Method - To change how you want to enter the WEP key, select **Key Entry Method**. If you want to enter a passphrase to generate a WEP key, select **ASCII**. If you want to enter the WEP key using hexadecimal characters, select **HEX**. Your selection will be denoted by a bracketed asterisk, [*]. Press the right arrow button to save your new setting. Press the left arrow button to cancel your change.

Key Size - To change the size of the WEP key, select **Key Size**. If you want to use a 64-bit key, select **64**. If you want to use a 128-bit key, select **128**. Your selection will be denoted by a bracketed asterisk, [*]. Press the right arrow button to save your new setting. Press the left arrow button to cancel your change.

Key - To change the passphrase or WEP key, select **Key**. Enter the passphrase (ASCII characters) or WEP key (hexadecimal characters) in this field. Use the arrow keys to scroll through the available ASCII or hexadecimal characters. To make a selection, press the **Select** button. Press the right arrow button to save your new setting. Press the left arrow button to cancel your change. If you are entering hexadecimal characters, make sure you enter the exact number of hexadecimal characters requested on the *Key* screen.

Site Survey

If you want to search for all available wireless networks, select **Site Survey**. A list of wireless networks will appear. To connect to a specific network, select it, and press the right arrow button. If the network uses WEP encryption, a new screen will appear and ask you to enter the WEP key.

TCP/IP

To change the Media Link's TCP/IP settings, select TCP/IP. You will see up to six choices: DHCP, IP Address, Subnet Mask, Gateway, DNS Server 1, and DNS Server 2.



Figure 5-17: Encryption Screen

WEP (Wired Equivalent Privacy): a method of encrypting data transmitted on a wireless network for greater security.

Passphrase: used much like a password, a passphrase simplifies the WEP encryption process by automatically generating the WEP encryption for Linksys products.

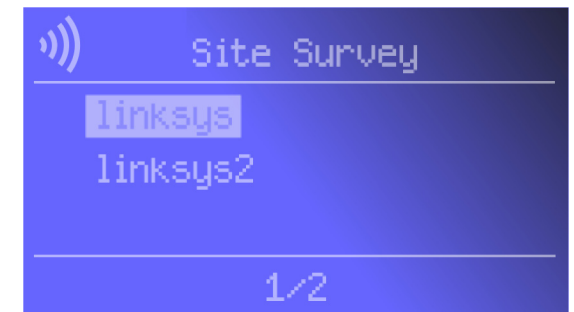


Figure 5-18: Site Survey Screen

DHCP

To change the Media Link's DHCP setting, select **DHCP**. If the Media Link will be assigned an IP address automatically by a router or other DHCP server, then select **Enable**. You will not see the IP Address, Subnet Mask, Gateway, and DNS Server menus because these settings will be set automatically. If the Media Link needs a static IP address, then select **Disable**. You will need to configure the IP Address, Subnet Mask, Gateway, and at least one of the DNS Server settings.

Your selection will be denoted by a bracketed asterisk, [*]. Press the right arrow button to save your new setting. Press the left arrow button to cancel your change.

IP Address

To change the Media Link's static IP address, select **IP Address**. Use the arrow keys to scroll through the numbers 0-9 and punctuation (a period). To make a selection, press the **Select** button. Press the right arrow button to save your new setting. Press the left arrow button to cancel your change.

Subnet Mask

To change the Media Link's subnet mask, select **Subnet Mask**. Use the arrow keys to scroll through the numbers 0-9 and punctuation (a period). To make a selection, press the **Select** button. Press the right arrow button to save your new setting. Press the left arrow button to cancel your change.

Gateway

To change the Media Link's gateway, select **Gateway**. Use the arrow keys to scroll through the numbers 0-9 and punctuation (a period). To make a selection, press the **Select** button. Press the right arrow button to save your new setting. Press the left arrow button to cancel your change.

DNS Server 1 and DNS Server 2

To change the Media Link's DNS server address, select **DNS Server 1** and/or **DNS Server 2**. (You must enter at least one DNS server address.) Use the arrow keys to scroll through the numbers 0-9 and punctuation (a period). To make a selection, press the **Select** button. Press the right arrow button to save your new setting. Press the left arrow button to cancel your change.

For information about the other LCD menus, refer to "Chapter 6: Using the LCD Menus of the Wireless-B Media Link for Music."

After you have finished configuring the Media Link's network settings, proceed to the next section, "Installing the Media Server Software."

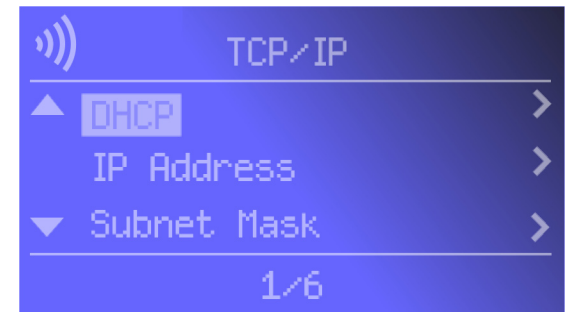


Figure 5-19: TCP/IP Screen



Figure 5-20: IP Address Screen

Static IP address: a fixed address assigned to a computer or device connected to a network.

Installing the Media Server Software

For the Media Link to work properly, you must install the Media Server software on at least one PC in your network. This software, which is called Musicmatch Jukebox, allows your computer to communicate with the Media Link, so music tracks can be sent to the stereo and/or Media Link speakers (WMLS11B only). Musicmatch Jukebox also organizes the music tracks and creates playlists, so you can easily find the songs you want to play. To install the software, follow these instructions:

1. Insert the Setup CD-ROM into your PC's CD-ROM drive. The Setup Wizard should run automatically, and the *Welcome* screen should appear. If it does not, click the **Start** button and choose **Run**. In the field that appears, enter `D:\setup.exe` (where "D" is the letter of your CD-ROM drive).
2. Click **Install Media Server**, and follow the on-screen instructions.



NOTE: If the computer running Musicmatch Jukebox goes into Sleep mode, then you will not be able to use the Media Link. To prevent Sleep mode:

1. Click the **Start** button and **Control Panel**.
2. Depending on the type of Windows operating system you are using, click **Control Panel** or click **Settings** and then **Control Panel**.
3. Depending on the type of Windows operating system, either double-click **Power Options**, or click **Performance and Maintenance** and then **Power Options**.
4. On the *Power Schemes* screen, select **Never** for the *System standby* and *System hibernate* settings.
5. Click the **OK** button.

Proceed to the "Setting up Musicmatch Jukebox" section.

Setting up Musicmatch Jukebox

After you have installed Musicmatch Jukebox, you will see its icon in the system tray of your taskbar, as well as on your desktop. Double-click either icon to start the software.

To enable communication between Musicmatch Jukebox and the Media Link, follow these instructions:

1. Click the **Options** menu.
2. Click **Settings**.



Figure 5-21: Welcome Screen



Figure 5-22: Musicmatch Jukebox Icons

3. Click the **CD Lookup/Connectivity** tab.
4. In the *Services* section, click the checkbox next to *Enable Music Server*.
5. Then click the checkbox next to *Universal Plug and Play*.
6. Click the **OK** button.

For information on how to use Musicmatch Jukebox, visit www.musicmatch.com, or click the **Help** menu of the software program.



NOTE: If you want to send music to the Media Link from multiple computers, you have two options:

You can install Musicmatch Jukebox on multiple computers, so you can switch between Media Servers when you want to send music to the Media Link from a different computer; or

You can install Musicmatch Jukebox on one computer and use shared drives on the network, so the music files can be accessed through the one computer.

Proceed to “Chapter 6: Using the LCD Menus of the Wireless-B Media Link for Music.”

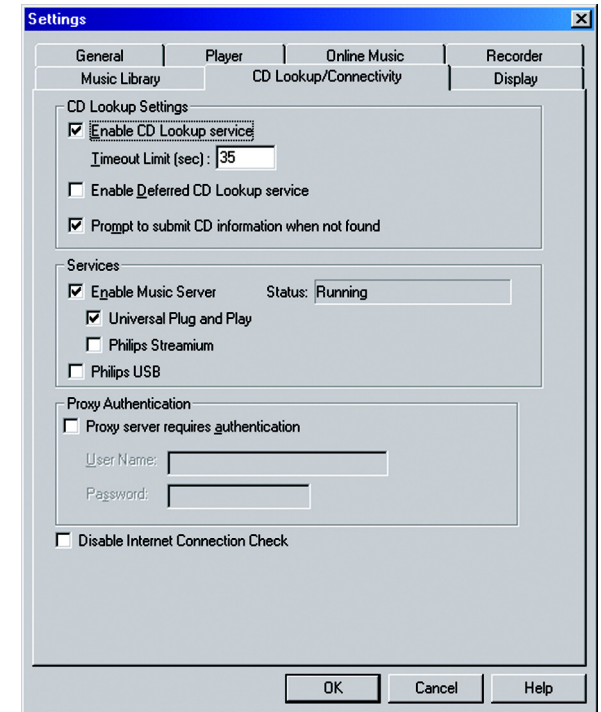


Figure 5-23: CD Lookup/Connectivity Tab

Chapter 6: Using the LCD Menus of the Wireless-B Media Link for Music

Overview

This chapter explains how to use the Media Link via the LCD menus on its front panel. For example, you can choose a playlist, browse for an album, or choose an Internet radio station.

After you have set up the Media Link and connected it to your stereo, the main menu will appear (see Figure 6-1). It has nine choices:

- Playlists
- Favorites
- Browse
- Internet Radio
- Media Servers
- Network Setup
- Network Status
- Update Radio List
- EQ

If you haven't already done so, insert the included AAA batteries into the Remote Controller.

To navigate the menus of the LCD screen, use the directional arrows on the remote or the Media Link's front panel. Press the **Select** or right arrow button to make a selection. Press the right arrow button to save any changes. Press the left arrow button to cancel any selection or changes. Press the **Menu** button to access the main menu at any time.

As a music track plays, the screen shown in Figure 6-2 will be displayed on the LCD screen. It shows information about the music track, such as playlist title, song title, artist, and/or album title. At the bottom of the screen, it also shows how much of the song has been played and how long the song is.

Use the Play/Pause and Stop buttons on the remote to control music playback. Use the Forward and Backward buttons to move forward and go backward within a music track. Use the Previous and Next buttons to move between music tracks.

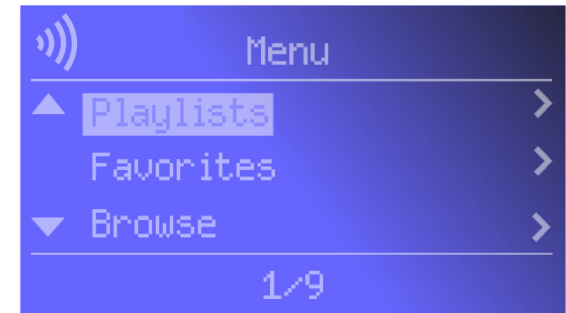


Figure 6-1: Main Menu Screen



Figure 6-2: Song Playing Screen

LCD Menu Icons

At the top of the LCD screen, you will see one or more icons indicating the Media Link's network type, the status of the music track, and which options you have selected. Here are descriptions of the nine icons:

- **Wired Network** - The Media Link is functioning as part of your wired network.
- **Wireless Network** - The Media Link is functioning as part of your wireless network.
- **No Network Signal** - The Media Link is not receiving a signal from any network.
- **Music Track Playing** - The Media Link is playing the selected music track.
- **Music Track Paused** - You have paused the selected music track.
- **Mute Music Track** - You have silenced the music track that is currently playing.
- **Shuffle Music Tracks** - The selected music tracks are playing in a random sequence.
- **Repeat Music Track** - You are re-playing the selected music track.
- **Repeat All Music Tracks** - You are re-playing all of the selected music tracks.



Figure 6-3: Wired Network



Figure 6-4: Wireless Network



Figure 6-5: No Network Signal



Figure 6-6: Music Track Playing



Figure 6-7: Music Track Paused



Figure 6-8: Mute Music Track



Figure 6-9: Shuffle Music Tracks



Figure 6-10: Repeat Music Track



Figure 6-11: Repeat All Music Tracks

Playlist Menu

At any time, you can use the Music button on the remote to access the Music menu. To play certain songs in a specific sequence, select the Playlist menu, which will list the playlists that you have created using Musicmatch. Select the playlist you want, and press the right arrow button.

Favorites Menu

The Favorites menu will list your favorites. Select the radio station you want, and press the right arrow button.

To designate your favorite radio station, scroll to Internet Radio, and select the radio station you want. Press the **Select** button, and select **Add to Favorites**. Then press the **Select** button again. If you already know the URL for your favorite radio station, use the Media Link's Web-based Utility to add up to 20 favorites. Refer to "Chapter 7: Using the Web-based Utility of the Wireless-B Media Link for Music."

Browse Menu

The Browse menu offers seven choices: Albums, All Tracks, Artists, Artists/Albums, Genres, Genres/Artists, and Playlists. Press the right arrow button to make a selection. As you browse, you will see additional screens with more choices. Select the song you want, and press the right arrow button.

Albums

The *Albums* screen lets you select the music you want to play according to album.

All Tracks

Select **All Tracks** to play every track in your digital music library.

Artists, Artists/Albums, Genres, Genres/Artists

If you want to play all the songs by a certain artist, select **Artists**. To browse by Artist and Album title, select **Artists/Albums**. To play all the songs of a certain genre, such as jazz or classical, select **Genres**. To browse by Genre and Artist, select **Genres/Artists**.

Playlists

To play certain songs in a specific sequence, select the Playlist menu, which will list the playlists that you have created using Musicmatch. Select the playlist you want, and press the right arrow button.



Figure 6-12: Playlist Screen



Figure 6-13: Favorites Screen



Figure 6-14: Browse Screen

Internet Radio Menu

The Media Link uses vTuner to find radio and TV broadcasts over the Internet. When you select the Internet Radio menu, you have three choices: Genres, Countries, and All Stations. At any time, you can use the iRadio button on the remote to access the Internet Radio menu.

Genres

You have an extensive list of genres available, from the Blues to News Talk to World Tropical. Press the right arrow button to make a selection. As you proceed with your browsing, you will see additional screens offering the available choices. When you have selected the Internet radio station you want, then press the right arrow button.

Countries

You can select from an extensive list of countries, from Antigua to Italy to Thailand. Press the right arrow button to make a selection. As you proceed with your browsing, you will see additional screens offering the available choices. When you have selected the Internet radio station you want, then press the right arrow button.

All Stations

Scroll through the list of all Internet radio stations. When you have selected the Internet radio station you want, press the right arrow button.

Media Server Menu

You can play music from any computer that has the Media Server installed (refer to “Chapter 4: Setting up the Wireless-B Media Link for Music”). To play music located on a different computer, use the Media Server menu to switch between computers.

When you select the Media Server menu, you will see a list of servers available on your network. “MM” denotes a Musicmatch server, while “RM” denotes a Rhapsody music server. Press the right arrow button to make a selection.

Network Setup Menu

If you want to set up the Media Link without using a computer, then use the Network Setup menu.

After you have selected the Network Setup menu, you will see these choices: Change to wired (network), Device Name, Wireless (settings), TCP/IP (settings), and Proxy (settings).



Figure 6-15: Internet Radio Screen



Figure 6-16: Media Server Screen



Figure 6-17: Network Setup Screen

Change to wired

If you want to use the Media Link as part of your wired network, select **Change to wired**. When asked if you are sure, select **Yes** to continue, or select **No** to cancel the setup. Press the right arrow button to save your new setting. Press the left arrow button to cancel your change.

Device Name

If you want to change the Media Link's Device Name, select **Device Name**. Use the arrow keys to scroll through the uppercase alphabet, lowercase alphabet, numbers, and punctuation. To make a selection, press the **Select** button. Press the right arrow button to save your new setting. Press the left arrow button to cancel your change.

Wireless

To change the Media Link's wireless settings, select **Wireless**. You have four choices: SSID, Network Type, Encryption, and Site Survey.

SSID

The Media Link's default SSID is **any**. If you want to change its default SSID, select **SSID**. Use the arrow keys to scroll through the uppercase alphabet, lowercase alphabet, numbers, and punctuation. To make a selection, press the **Select** button. Press the right arrow button to save your new setting. Press the left arrow button to cancel your change.



NOTE: Every time you want to save a new setting, you must press the right arrow button on the remote or front panel. Then the Media Link will save the setting and restart itself.



Figure 6-18: Device Name Screen



Figure 6-19: Wireless Screen

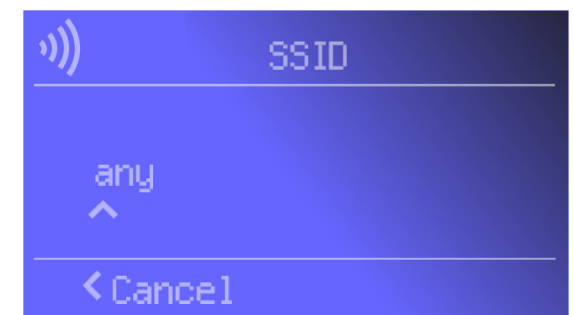


Figure 6-20: SSID Screen

Network Type

If you want to change the wireless network type, select **Network Type**. If your network uses infrastructure mode, then select **Infrastructure**. If your network uses ad-hoc mode, then select **Ad-Hoc**. Your selection will be denoted by a bracketed asterisk, [*]. Press the right arrow button to save your new setting. Press the left arrow button to cancel your change.

Encryption

If you want to change the Media Link's encryption settings, select **Encryption**. You will see four choices: WEP (Wired Equivalent Privacy), Key Entry Method, Key Size, and Key.

WEP - To enable or disable WEP encryption, select **WEP**. To enable WEP encryption, select **Enable**. To disable WEP encryption, select **Disable**. Your selection will be denoted by a bracketed asterisk, [*]. Press the right arrow button to save your new setting. Press the left arrow button to cancel your change.

Key Entry Method - To change how you want to enter the WEP key, select **Key Entry Method**. If you want to enter a passphrase to generate a WEP key, select **ASCII**. If you want to enter the WEP key using hexadecimal characters, select **HEX**. Your selection will be denoted by a bracketed asterisk, [*]. Press the right arrow button to save your new setting. Press the left arrow button to cancel your change.

Key Size - To change the size of the WEP key, select **Key Size**. If you want to use a 64-bit key, select **64**. If you want to use a 128-bit key, select **128**. Your selection will be denoted by a bracketed asterisk, [*]. Press the right arrow button to save your new setting. Press the left arrow button to cancel your change.

Key - To change the passphrase or WEP key, select **Key**. Enter the passphrase (ASCII characters) or WEP key (hexadecimal characters) in this field. Use the arrow keys to scroll through the available ASCII or hexadecimal characters. To make a selection, press the **Select** button. Press the right arrow button to save your new setting. Press the left arrow button to cancel your change. If you are entering hexadecimal characters, make sure you enter the exact number of hexadecimal characters requested on the *Key* screen.



NOTE: Every time you want to save a new setting, you must press the right arrow button on the remote or front panel. Then the Media Link will save the setting and restart itself.

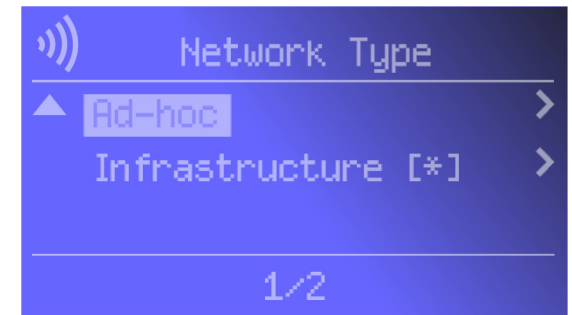


Figure 6-21: Network Type Screen



Figure 6-22: Encryption Screen

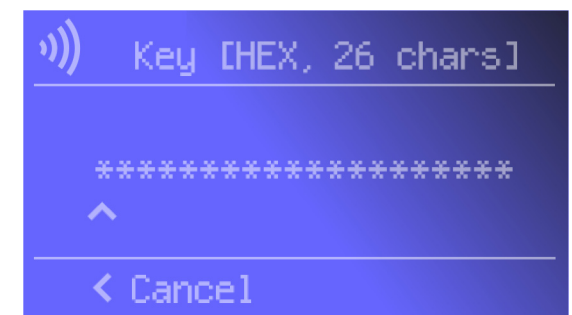


Figure 6-23: Key Screen