

- **Install** - Click the **Install** button to begin the software installation process.
- **User Guide** - Click the **User Guide** button to open the PDF file of this User Guide.
- **Exit** - Click the **Exit** button to exit the Setup Wizard.

1. To install the Adapter, click the **Install** button on the *Welcome* screen.
2. After reading the *License Agreement*, shown in Figure 5-2, click the **Next** button if you agree, or click the **Cancel** button to end the installation.

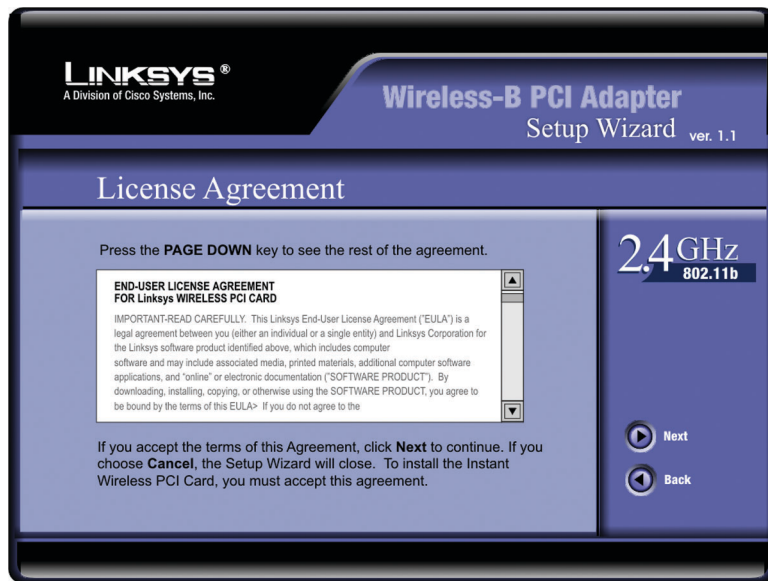


Figure 5-2

3. The Setup Wizard will ask you to choose a wireless mode, as shown in Figure 5-3. Click the **Infrastructure Mode** radio button if you want your wireless computers to network with computers on your wired network using a wireless access point. Click the **Ad-Hoc Mode** radio button if you want multiple wireless computers to network directly with each other. Do not use the Ad-Hoc mode if you want your wireless computers to communicate with computers on your wired network.

In the *SSID* field, enter the **SSID** of your wireless network. The SSID must be identical for all devices in the network. The default setting is **linksys** (all lowercase). Click the **Next** button.

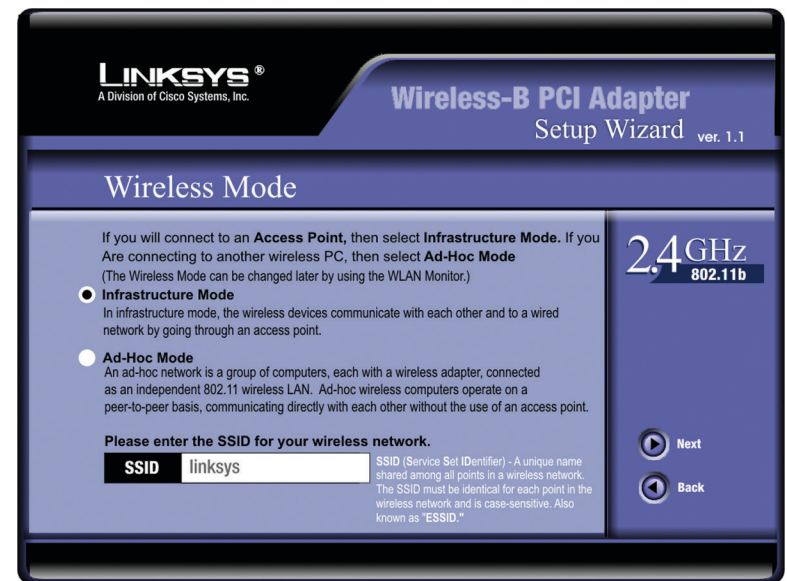


Figure 5-3

4. If you chose **Infrastructure Mode**, go to **Step 5** now. If you chose **Ad-Hoc Mode**, as shown in Figure 5-4, select the correct operating channel for your network. The channel you choose should match the channel set on the other devices in your wireless network. Click the **Next** button, and go to **Step 5**.



Figure 5-4

5. The screen shown in Figure 5-5 will ask you to review your settings before it starts to copy files. Click the **Next** button to save these settings, or click the **Back** button to change any settings.



Figure 5-5

6. After the files have been successfully copied, the screen in Figure 5-6 will appear. Click the **Finish** button.



Figure 5-6

Proceed to “Chapter 6: Hardware Installation for Windows 98SE, Me, and 2000.”

Chapter 6: Hardware Installation for Windows 98SE, Me, and 2000



Make sure that you do Chapter 5 and install the software with the Setup Wizard before you install the hardware.

1. Remove any CDs or disks from their drives, and turn off your desktop PC.
2. Open your PC's case, and locate an available PCI slot on the motherboard. Check with your computer manufacturer for instructions.
3. Slide the Adapter into the PCI slot, as shown in Figure 6-1. Make sure that all of its pins are touching the slot's contacts. You may have to apply a bit of pressure to slide the Adapter all the way in.
4. After the Adapter is set firmly in place, secure its fastening tab to your PC's chassis with a mounting screw. Then close your PC's case.

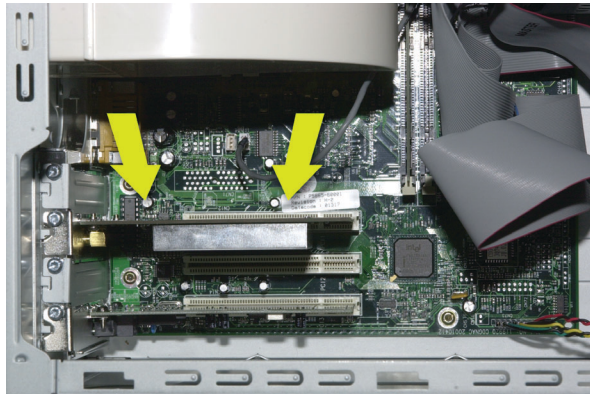


Figure 6-1

Wireless-B PCI Adapter

5. Attach the external antenna to the Adapter's antenna port, as shown in Figure 6-2.



Figure 6-2



Important: Make sure the antenna is positioned straight up into the air, at a 90° angle from the Adapter (see Figure 5-2). This will ensure optimum wireless operating range and performance.

5. Power on your desktop PC.

Hardware Detection for Windows 98SE, Me, and 2000

After the Adapter has been physically connected to your computer, Windows will detect the new hardware.

Windows will begin installing the driver files in your operating system. If Windows asks you for the original Windows CD-ROM, insert the CD-ROM, and direct Windows to the proper location for the CD-ROM (e.g., **D:**).

Congratulations! The installation of the Wireless-B PCI Adapter is complete.

If you want to check the link information, search for available wireless networks, or make additional configuration changes, proceed to “Chapter 7: Using the WLAN Monitor for Windows 98SE, Me, and 2000.”

Chapter 7: Using the WLAN Monitor for Windows 98SE, Me, and 2000

Overview

Use the WLAN Monitor to check the link information, search for available wireless networks, or make additional configuration changes.

Starting the WLAN Monitor



Important for Windows XP users: Windows XP has a built-in configuration tool. Use the Windows XP Wireless Zero Configuration (in the system tray at the bottom of your screen) to configure the Adapter. See “Chapter 6: Driver Installation and Configuration for Windows XP.”

After installing the Adapter, the Wireless-B PCI Adapter WLAN Monitor icon will appear in your system tray. Double-click the icon (see Figure 7-1).



Figure 7-1

The *Link Information* screen will appear, displaying the settings for your current wireless connection. To search for available wireless networks, click the **Site Survey** tab. To perform configuration changes, click the **Profiles** tab.



Figure 7-2

Link Information

The *Link Information* screen (Figure 7-3) shows you the settings of your current connection.

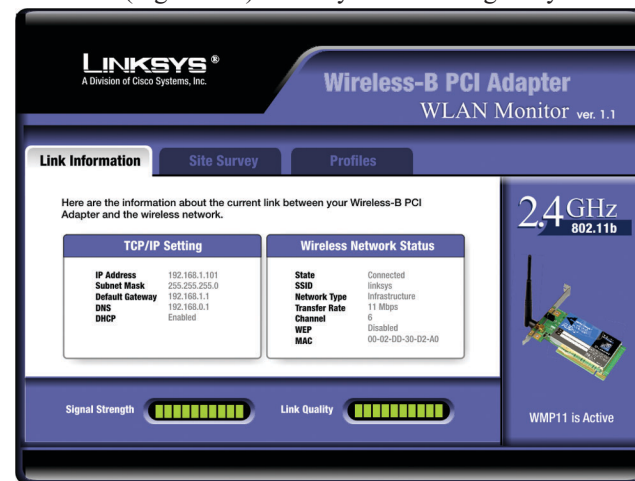


Figure 7-3

TCP/IP Setting

IP Address - The IP Address of the Adapter.

Subnet Mask - The Subnet Mask of the Adapter.

Default Gateway - The Default Gateway address of the Adapter.

DNS - The DNS address of the Adapter.

DHCP - The status of the DHCP client.

Wireless Network Status

State - The status of the wireless network connection.

SSID - The SSID of the wireless network.

Network Type - The wireless mode currently in use.

Transfer Rate - The data transfer rate of the current connection.

Channel - The channel to which the wireless network devices are set.

WEP - The status of the WEP encryption security feature.

MAC - The MAC address of the wireless network's access point.

Signal Strength - The Signal Strength bar indicates signal strength, from 0 to 100%.

Link Quality - The Link Quality bar indicates the quality of the wireless network connection, from 0 to 100%.

Click the X (Close) button in the upper right corner to exit the WLAN Monitor.

Site Survey

The *Site Survey* screen, shown in Figure 7-4, displays a list of infrastructure and ad-hoc networks available for connection.

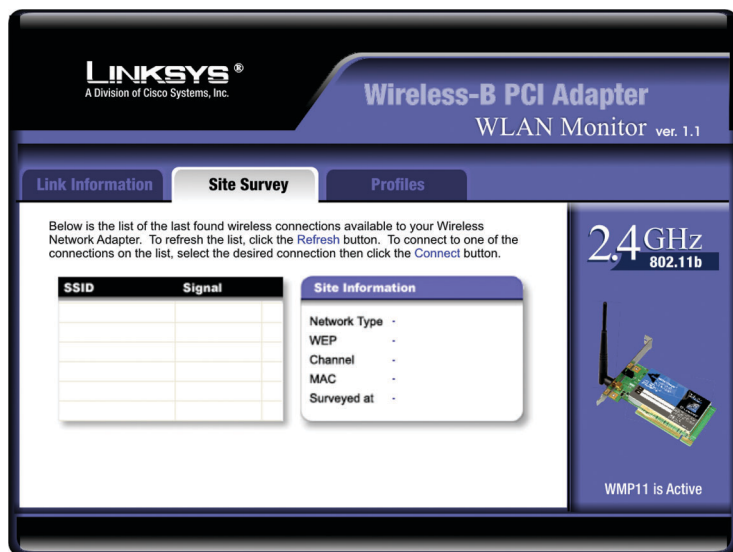


Figure 7-4

SSID - The SSID of the wireless network.

Signal - The percentage of signal strength, from 0 to 100%.

Site Information

Network Type - The wireless mode currently in use.

Channel - The channel to which the wireless network devices are set.

WEP - The status of the WEP encryption security feature.

MAC - The MAC address of the wireless network's access point.

Surveyed at - The time at which the wireless network was scanned.

Refresh - Click the **Refresh** button to perform a new search for wireless devices.

Wireless-B PCI Adapter

Connect - To connect to one of the networks on the list, select the wireless network, and click the **Connect** button to connect. If the wireless network has WEP encryption enabled, you will see the screen shown in Figure 7-5.

Security Settings (Optional)

Wired Equivalent Privacy (WEP) is an encryption method used to secure your wireless network. A higher level of encryption is more secure. To use WEP, you must use the same WEP Key or Passphrase that your wireless network uses.

WEP Disabled

If your wireless network uses a passphrase, enter the passphrase here. Note that the passphrase is case-sensitive and should not be longer than 16 alphanumeric characters

Passphrase

or

If your wireless network uses a WEP key, enter the same WEP key here.

Key 1

OK

Cancel

Figure 7-5

In the *WEP* drop-down box, select the type of WEP encryption used by the wireless network: **64-bit** or **128-bit WEP**.

If the wireless network uses a passphrase, enter the passphrase in the *Passphrase* field. If the wireless network uses a WEP key, enter the WEP key in the *Key 1* field.

Click the **OK** button to complete the network connection and return to the *Site Survey* screen, or click the **Cancel** button to cancel the network connection and return to the *Site Survey* screen.

On the *Site Survey* screen, click the **X** (Close) button in the upper right corner to exit the WLAN Monitor.

Profiles

The *Profiles* screen lets you save different configuration profiles for different network setups. You can also import or export profiles. The default profile holds the initial configuration saved when you installed the Adapter.

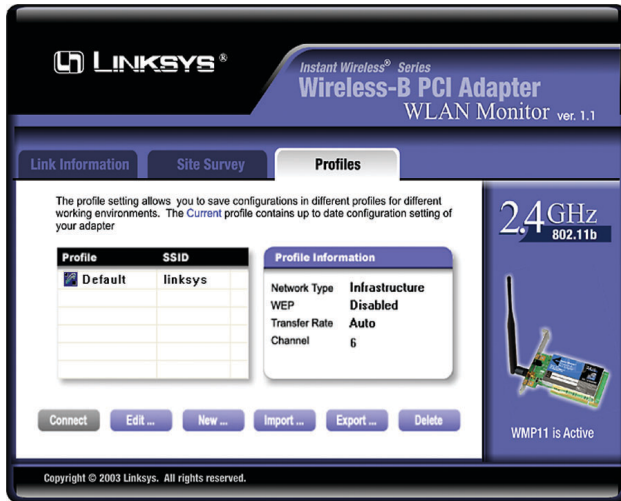


Figure 7-6

Profile - Name of the connection profile.

SSID - The wireless network's SSID, as set in the connection profile.

Profile Information

Network Type - The wireless mode currently in use.

Transfer Rate - The data transfer rate of the current connection: *1Mbps*, *2Mbps*, *1 or 2Mbps*, *5.5Mbps*, *11Mbps*, or *Auto* (in *Auto* mode, the Adapter dynamically shifts to the fastest data transfer rate possible at any given time).

Channel - The channel to which the wireless network devices are set.

WEP - The status of the WEP encryption security feature.

Connect - To connect to a wireless network using a specific profile, select the profile, and click the **Connect** button. If the wireless network has WEP encryption enabled, you will see the screen shown in Figure 7-7.

Edit - Select a profile, and click the **Edit** button to change an existing profile.

New - Click the **New** button to create a new profile. See the next section, "Creating a New Profile."

Wireless-B PCI Adapter

- **Import** - Click the **Import** button to import a profile that has been saved in another location. Select the appropriate file, and click the **Open** button.

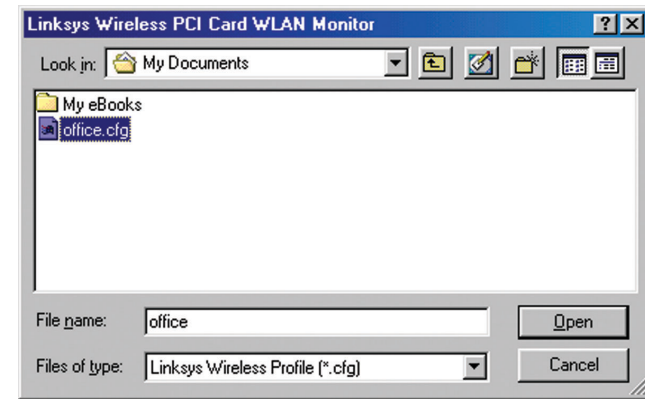


Figure 7-7

- **Export** - Select the profile you want to save in a different location, and click the **Export** button. Direct Windows to the appropriate folder, and click the **OK** button.

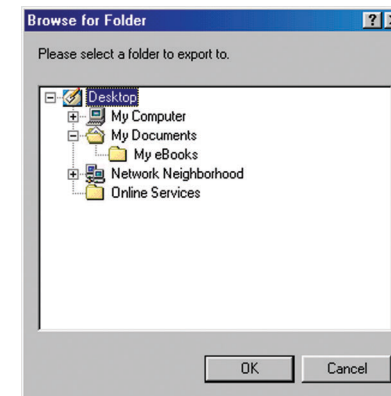


Figure 7-8



Note: If you want to export more than one profile, you have to export them one at a time.

- **Delete** - Click the **Delete** button to delete a profile.

Click the **X** (Close) button in the upper right corner to exit the WLAN Monitor.

Creating a New Profile

1. On the *Profiles* screen, shown in Figure 7-6, click the **New** button to create a new profile.

2. When the *Create connection profile* screen appears (Figure 7-9), enter a name for the new profile. Click **OK** to save the profile name or click **Cancel** to return to the previous screen.

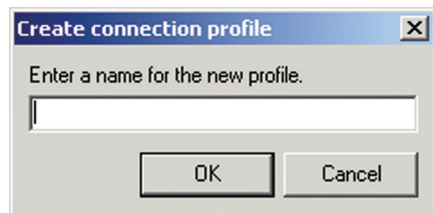


Figure 7-9

3. The *Wireless Mode* screen (Figure 7-10) shows a choice of two wireless modes. Click the **Infrastructure Mode** radio button if you want your wireless computers to communicate with computers on your wired network via a wireless access point. Click the **Ad-Hoc Mode** radio button if you want multiple wireless computers to communicate directly with each other. Click the **Next** button to continue or the **Back** button to return to the previous screen.

Infrastructure Mode - This mode allows wireless and wired networks to communicate through an access point.

Ad-Hoc Mode - This mode allows wireless-equipped computers to communicate directly with each other. No access point is used.

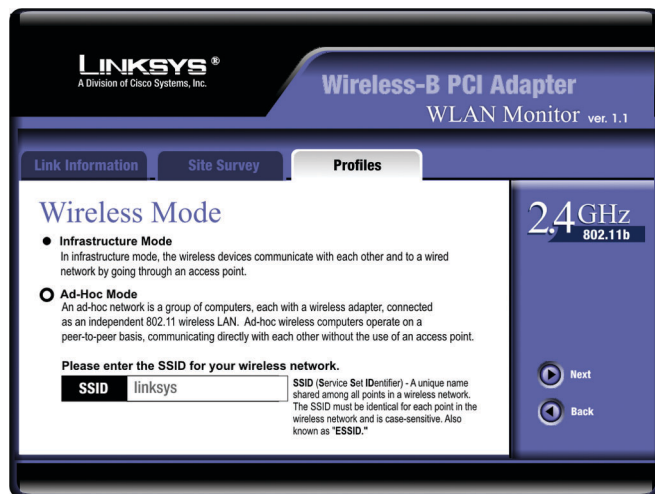


Figure 7-10

Wireless-B PCI Adapter

4. The *Wireless Channel* screen (Figure 7-11) will appear. If you chose Infrastructure Mode, go to **Step 5** now. If you chose Ad-Hoc Mode, select the correct operating channel for your network from the *Channel* drop-down menu. Click the **Next** button, and go to **Step 5**. Click the **Back** button to change any settings.

Channel - The channel you choose should match the channel set on the other devices in your wireless network. If you are unsure about which channel to use, select the default channel (Channel 6).



Figure 7-11