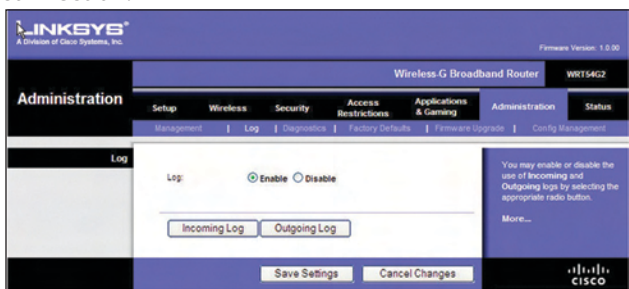


## Administration > Log

The Router can keep logs of all traffic for your Internet connection.



Administration > Log

### Log

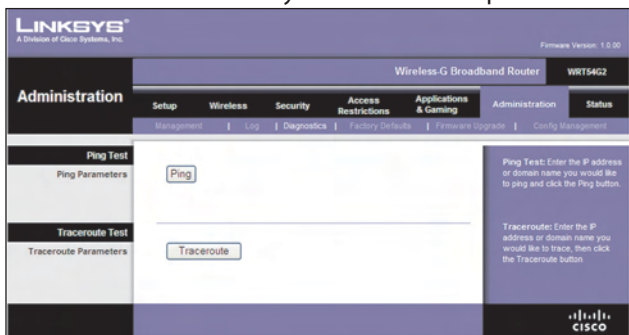
**Log** To disable the Log function, keep the default setting, **Disable**. To monitor traffic between the network and the Internet, select **Enable**.

When you wish to view the logs, click **Incoming Log** or **Outgoing Log**, depending on which you wish to view.

Click **Save Settings** to apply your changes, or click **Cancel Changes** to cancel your changes.

## Administration > Diagnostics

The diagnostic tests (Ping and Traceroute) allow you to check the connections of your network components.



Administration > Diagnostics

### Ping Test

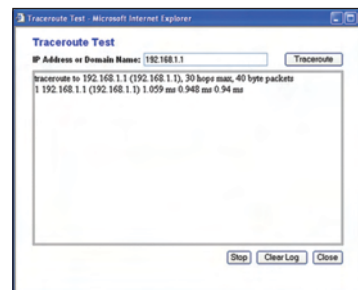
**Ping** The Ping test checks the status of a connection. Click **Ping** to open the *Ping Test* screen. Enter the address of the PC whose connection you wish to test and how many times you wish to test it. Then, click **Ping**. The *Ping Test* screen will show if the test was successful. To stop the test, click **Stop**. Click **Clear Log** to clear the screen. Click **Close** to return to the *Diagnostics* screen.



The Ping Test

### Traceroute Test

**Traceroute** To test the performance of a connection, click **Traceroute** to open the *Traceroute Test* screen. Enter the address of the PC whose connection you wish to test and click **Traceroute**. The *Traceroute Test* screen will show if the test was successful. To stop the test, click **Stop**. Click **Clear Log** to clear the screen. Click **Close** to return to the *Diagnostics* screen.



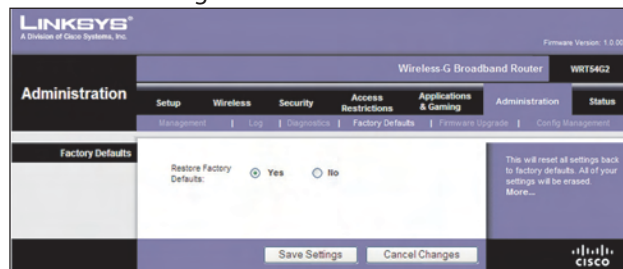
The Traceroute Test

## Administration > Factory Defaults

The *Administration > Factory Defaults* screen allows you to restore the Router's configuration to its factory default settings.

### Factory Defaults

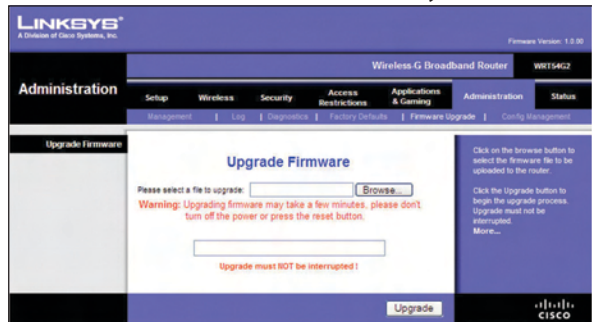
**Restore Factory Defaults** To reset the Router's settings to the default values, select **Yes**, and then click **Save Settings**. Any settings you have saved will be lost when the default settings are restored.



Administration > Factory Defaults

## Administration > Upgrade Firmware

The *Administration > Upgrade Firmware* screen allows you to upgrade the Router's firmware. Do not upgrade the firmware unless you are experiencing problems with the Router or the new firmware has a feature you want to use.



Administration > Upgrade Firmware

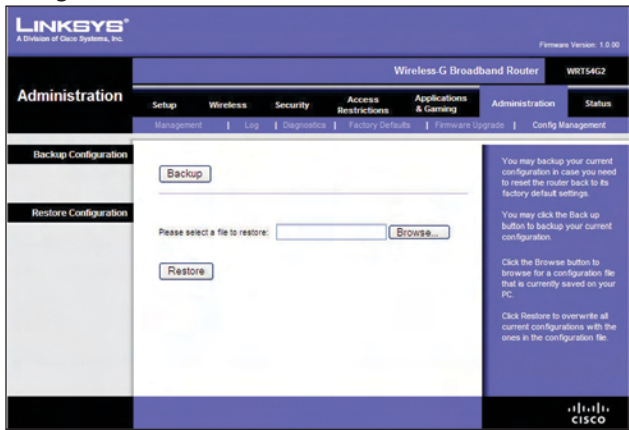
Before upgrading the firmware, download the Router's firmware upgrade file from the Linksys website, [www.linksys.com](http://www.linksys.com). Then extract the file.

## Upgrade Firmware

**Please select a file to upgrade** Click **Browse** and select the extracted firmware upgrade file. Then click **Upgrade** and follow the on-screen instructions.

## Administration > Config Management

This screen is used to back up or restore the Router's configuration file.



Administration > Config Management

## Backup Configuration

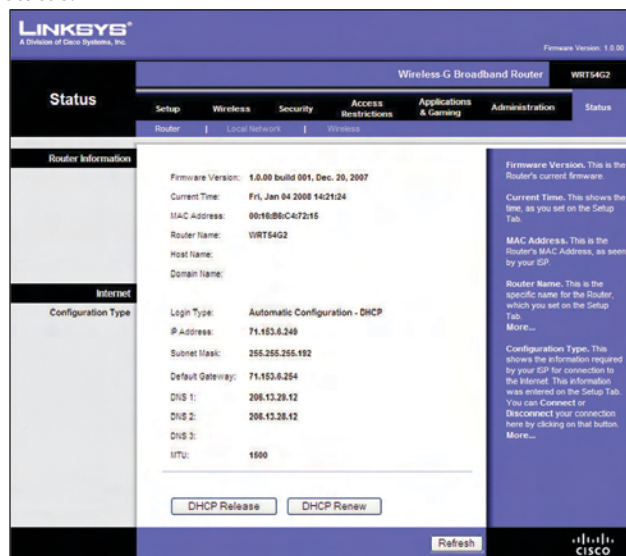
To back up the Router's configuration file, click **Backup**. Then follow the on-screen instructions.

## Restore Configuration

**Please select a file to restore** Click **Browse** and select the configuration file. Then click **Restore**.

## Status > Router

The *Status > Router* screen displays the Router's current status.



Status > Router

## Router Information

**Firmware Version** This is the Router's current firmware.

**Current Time** This shows the time, as you set on the Setup tab.

**MAC Address** This is the Router's MAC Address, as seen by your ISP.

**Router Name** This is the specific name for the Router, which you set on the Setup tab.

**Host Name** If required by your ISP, this would have been entered on the Setup tab.

**Domain Name** If required by your ISP, this would have been entered on the Setup tab.

## Internet

### Configuration Type

This section shows the current network information stored in the Router. The information varies depending on the Internet connection type selected on the *Setup > Basic Setup* screen.

Click **Refresh** to update the on-screen information.

## Status > Local Network

The *Status > Local Network* screen displays the status of your network.



Status > Local Network

### Local Network

**MAC Address** This is the Router's MAC Address, as seen on your local, Ethernet network.

**IP Address** This shows the Router's IP Address, as it appears on your local, Ethernet network.

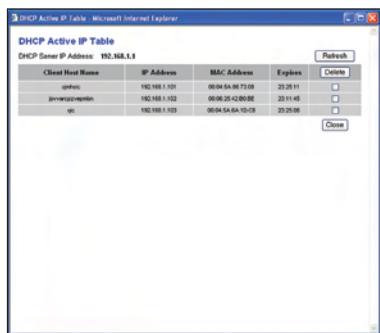
**Subnet Mask** This shows the current subnet mask being configured for your local network.

**DHCP Server** If you are using the Router as a DHCP server, that will be displayed here.

**Start IP Address** For the range of IP Addresses used by devices on your local, Ethernet network, the beginning of that range is shown here.

**End IP Address** For the range of IP Addresses used by devices on your local, Ethernet network, the end of that range is shown here.

**DHCP Clients Table** Clicking this button will open a screen to show you which PCs are utilizing the Router as a DHCP server. You can delete PCs from that list, and sever their connections, by checking a **Delete** box and clicking the **Delete** button.

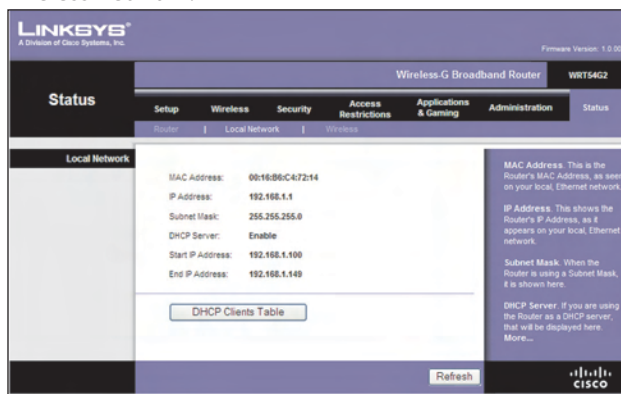


DHCP Clients Table

Click **Refresh** to update the on-screen information.

## Status > Wireless

The *Status > Wireless* screen displays the status of your wireless network.



Status > Wireless

### Wireless

**MAC Address** This is the Router's MAC Address, as seen on your local, wireless network.

**Mode** As selected from the *Wireless > Basic Wireless Settings* screen, this displays the wireless mode (Mixed, G-Only, or Disabled) used by the network.

**SSID** As entered on the *Wireless > Basic Wireless Settings* screen, this displays the wireless network name or SSID.

**DHCP Server** The status of the DHCP server function is displayed here.

**Channel** As entered on the *Wireless > Basic Wireless Settings* screen, this displays the channel on which your wireless network is broadcasting.

**Encryption Function** As selected on the *Wireless > Wireless Security* screen, this displays the status of the Router's wireless security.

Click **Refresh** to update the on-screen information.