

- The Setup Wizard will ask you to connect your broadband modem to the Router. After you have done so, click the **Next** button.

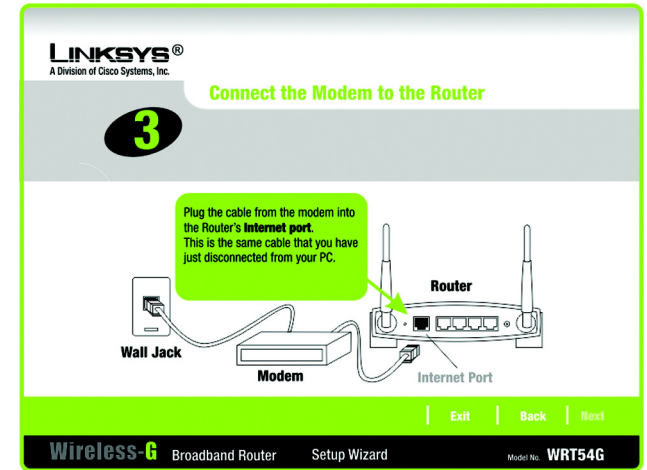


Figure 5-5: Setup Wizard's Connect the Modem to the Router Screen

- The Setup Wizard will ask you to connect a network cable to your PC. After you have done so, click the **Next** button.

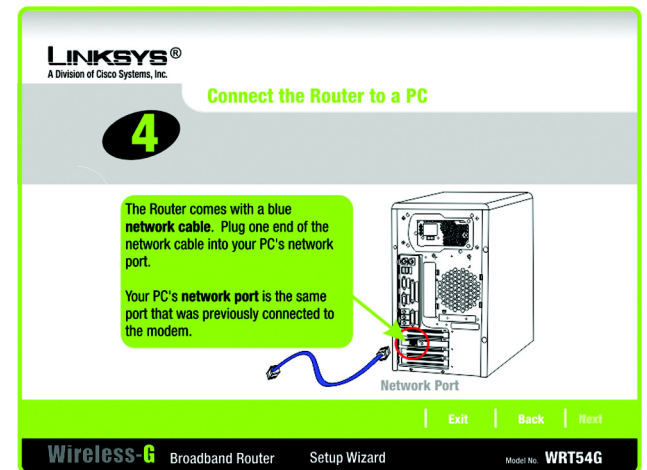


Figure 5-6: Setup Wizard's Connect a Network Cable to a PC Screen

Wireless-G Broadband Router

8. The Setup Wizard will ask you to connect the other end of the network cable to the Router.

Then you can also connect additional PCs to the Router.

After you have done so, click the **Next** button.

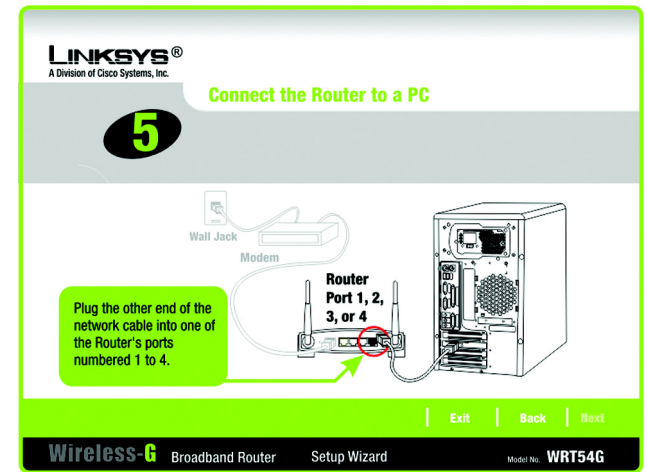


Figure 5-7: Setup Wizard's Connect the Network Cable to the Router Screen

9. The Setup Wizard will ask you to power on the Router. After you have done so, click the **Next** button.

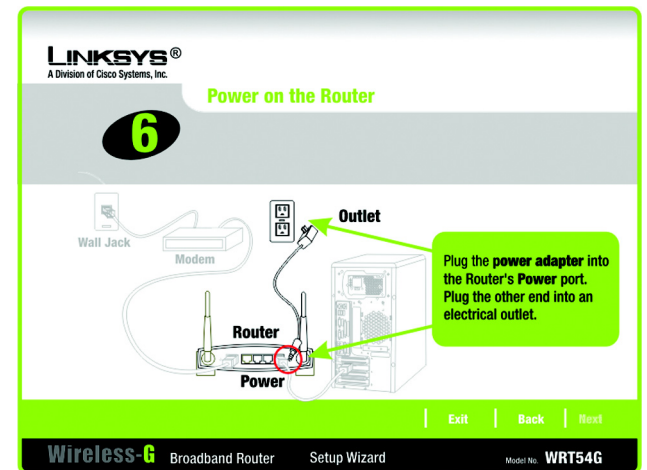


Figure 5-8: Setup Wizard's Power on the Router Screen

10. Make sure the Router's Power, Internet, and numbered LEDs (depending on the number of PCs connected) are lit on its front panel. After you have done so, click the **Next** button.

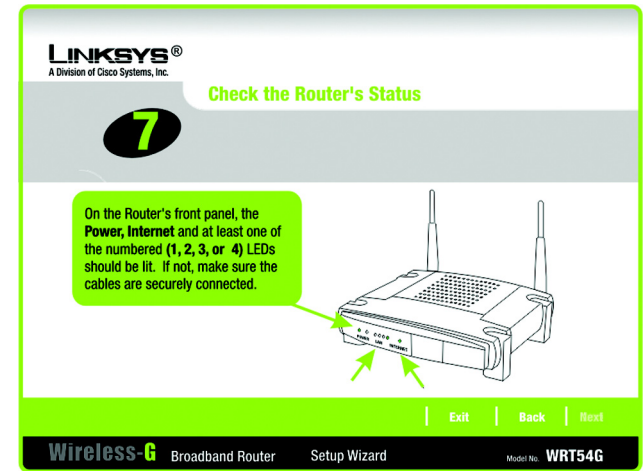


Figure 5-9: Setup Wizard's Check the Router's Status Screen

11. The Setup Wizard will automatically detect the Internet connection type you use: **Cable or DHCP** or **DSL (PPPoE)**. If the Setup Wizard cannot detect your Internet connection type, you will see the *Advanced Internet Settings* screen, and you will be asked to select your Internet connection type: **Static IP, PPTP, L2TP, or Telstra**. Proceed to the appropriate section for your Internet connection type.

Cable or DHCP

Host Name - Enter the Host Name if required by your ISP; otherwise, leave this field blank.

Domain Name - Enter the Domain Name if required by your ISP; otherwise, leave this field blank.

Click the **Next** button to continue or the **Back** button to return to the previous screen.

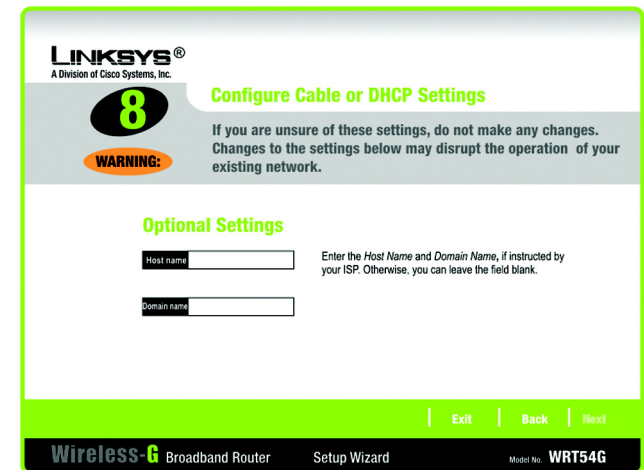


Figure 5-10: Setup Wizard's Configure Cable or DHCP Settings Screen

DSL (PPPoE)

User Name - Enter the User Name provided by your ISP.

Password - Enter the Password provided by your ISP.

Confirm - To confirm the Password, enter it again in this field.

Keep Alive - If you want the Router to periodically check your Internet connection, select **Keep Alive**. Then specify how often you want the Router to check the Internet connection. If the connection is down, the Router will automatically re-establish your connection.

Connect on Demand - If you want the Router to end the Internet connection after it has been inactive for a period of time, select **Connect on Demand** and designate the number of minutes you want that period of inactivity to last.

Click the **Next** button to continue or the **Back** button to return to the previous screen.

Static IP

Connection - If you are required to use a permanent IP address to connect to the Internet, select **Static IP** from the drop-down menu.

IP Address - Enter the IP address provided by your ISP.

Subnet Mask - Enter the Subnet Mask provided by your ISP.

Gateway - Enter the Gateway IP address provided by your ISP.

DNS 1-2 - Enter the DNS (Domain Name System) server IP address(es) provided by your ISP. You need to enter at least one DNS address.

Click the **Next** button to continue or the **Back** button to return to the previous screen.

Figure 5-11: Setup Wizard's Configure DSL (PPPoE) Settings Screen

Figure 5-12: Setup Wizard's Advanced Internet Settings - Static IP Screen

PPTP

Connection - PPTP (Point-to-Point Tunneling Protocol) service is used in Europe only. If you are using a PPTP connection, select **PPTP** from the drop-down menu.

User Name - Enter the User Name provided by your ISP.

Password - Enter the Password provided by your ISP.

Confirm - To confirm the Password, enter it again in this field.

IP Address - Enter the IP address provided by your ISP.

Subnet Mask - Enter the Subnet Mask provided by your ISP.

Gateway - Enter the Gateway IP address provided by your ISP.

Click the **Next** button to continue or the **Back** button to return to the previous screen.

Keep Alive - If you want the Router to periodically check your Internet connection, select **Keep Alive**. Then specify how often you want the Router to check the Internet connection. If the connection is down, the Router will automatically re-establish your connection.

Connect on Demand - If you want the Router to end the Internet connection after it has been inactive for a period of time, select **Connect on Demand** and designate the number of minutes you want that period of inactivity to last.

Click the **Next** button to continue or the **Back** button to return to the previous screen.

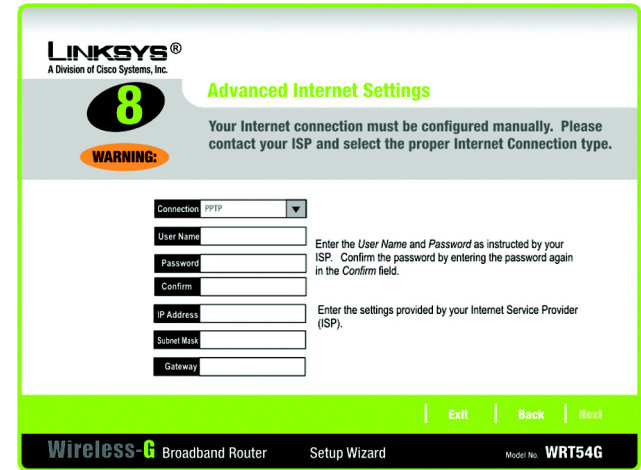


Figure 5-13: Setup Wizard's Advanced Internet Settings - PPTP Screen

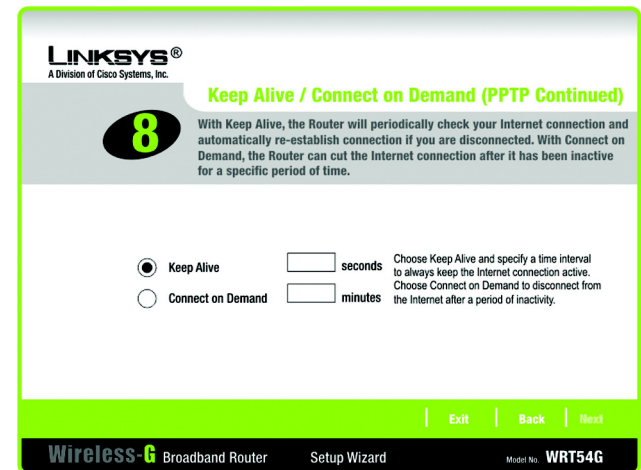


Figure 5-14: Setup Wizard's Keep Alive/Connect on Demand (PPTP Continued) Screen

L2TP

Connection - If you are using an L2TP (Layer 2 Tunneling Protocol) connection, select **L2TP** from the drop-down menu.

User Name - Enter the User Name provided by your ISP.

Password - Enter the Password provided by your ISP.

Confirm - To confirm the Password, enter it again in this field.

L2TP Server - Enter the IP address of the L2TP server you are using; this should be provided by your ISP.

Keep Alive - If you want the Router to periodically check your Internet connection, select **Keep Alive**. Then specify how often you want the Router to check the Internet connection. If the connection is down, the Router will automatically re-establish your connection.

Connect on Demand - If you want the Router to end the Internet connection after it has been inactive for a period of time, select **Connect on Demand** and designate the number of minutes you want that period of inactivity to last.

Click the **Next** button to continue or the **Back** button to return to the previous screen.

The screenshot displays the 'Advanced Internet Settings' screen for a Linksys Wireless-G Broadband Router. At the top, there is a 'WARNING' icon and a message: 'Your Internet connection must be configured manually. Please contact your ISP and select the proper Internet Connection type.' Below this, the 'Connection' type is set to 'L2TP'. There are four input fields: 'User Name', 'Password', 'Confirm', and 'L2TP Server'. To the right of the 'User Name' and 'Password' fields, there is a note: 'Enter the User Name and Password as instructed by your ISP. Confirm the password by entering the password again in the Confirm field.' Below the input fields, there are two radio button options: 'Keep Alive' (selected) and 'Connect on Demand'. The 'Keep Alive' option has a 'seconds' field next to it, and the 'Connect on Demand' option has a 'minutes' field next to it. To the right of these fields, there is a note: 'Choose Keep Alive and specify a time interval to always keep the Internet connection active. Choose Connect on Demand to disconnect from the Internet after a period of inactivity.' At the bottom of the screen, there is a navigation bar with 'Exit', 'Back', and 'Next' buttons. The footer of the screen displays 'Wireless-G Broadband Router', 'Setup Wizard', and 'Model No. WRT54G'.

Figure 5-15: Setup Wizard's Advanced Internet Settings - L2TP Screen

Telstra

Connection - Telstra is a service used in Australia only. If you are using this service, select **Telstra** from the drop-down menu.

User Name - Enter the User Name provided by your ISP.

Password - Enter the Password provided by your ISP.

Confirm - To confirm the Password, enter it again in this field.

Heart Beat Server - Enter the IP address of the Heart Beat Server server you are using (this should be provided by your ISP).

Keep Alive - If you want the Router to periodically check your Internet connection, select **Keep Alive**. Then specify how often you want the Router to check the Internet connection. If the connection is down, the Router will automatically re-establish your connection.

Connect on Demand - If you want the Router to end the Internet connection after it has been inactive for a period of time, select **Connect on Demand** and designate the number of minutes you want that period of inactivity to last.

Click the **Next** button to continue or the **Back** button to return to the previous screen.

The screenshot displays the 'Advanced Internet Settings' screen for the Telstra service. At the top left, the Linksys logo is visible. A large number '8' is prominently displayed in a black circle. Below it, a 'WARNING' icon is shown. The main heading is 'Advanced Internet Settings' in green. A message states: 'Your Internet connection must be configured manually. Please contact your ISP and select the proper Internet Connection type.' The form includes a 'Connection' dropdown menu set to 'Telstra', and four input fields: 'User Name', 'Password', 'Confirm', and 'Heart Beat Server'. To the right of these fields, instructions read: 'Enter the User Name and Password as instructed by your ISP. Confirm the password by entering the password again in the Confirm field.' Below the input fields, there are two radio button options: 'Keep Alive' (selected) and 'Connect on Demand'. The 'Keep Alive' option has a 'seconds' field next to it, with the instruction: 'Choose Keep Alive and specify a time interval to always keep the Internet connection active.' The 'Connect on Demand' option has a 'minutes' field next to it, with the instruction: 'Choose Connect on Demand to disconnect from the Internet after a period of inactivity.' At the bottom of the form, there are three buttons: 'Exit', 'Back', and 'Next'. The footer of the screen shows 'Wireless-G Broadband Router', 'Setup Wizard', and 'Model No. WRT54G'.

Figure 5-16: Setup Wizard's Advanced Internet Settings - Telstra Screen

12. The Router provides a Web-based Utility you can use for configuring the Router from any networked PC.

Password - Enter a password that will control access to the Utility.

Confirm - Enter the password again in the *Confirm* field.

Click the **Next** button to continue or the **Back** button to return to the previous screen.

13. There are two ways to configure the Router's wireless settings, SecureEasySetup and manual configuration.

If you have other SecureEasySetup devices, such as notebook adapters or printers, then you can use the Router's SecureEasySetup feature to create your wireless network. Proceed to the section, "Using the Router's SecureEasySetup Feature."

If you do not have other SecureEasySetup devices, then proceed to the section, "Manually Configuring the Router's Wireless Settings."

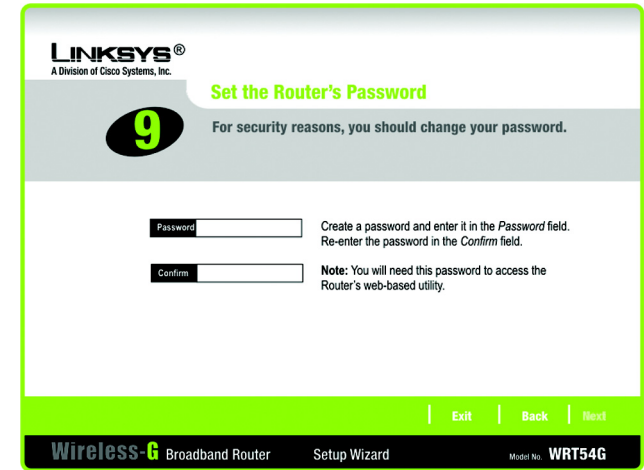


Figure 5-17: Setup Wizard's Set the Router's Password Screen

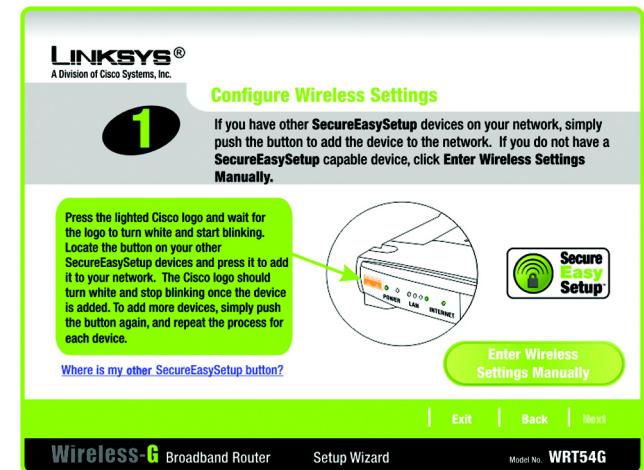


Figure 5-18: Setup Wizard's Configure Wireless Settings Screen

Using the Router's SecureEasySetup Feature

Read these instructions before you press any SecureEasySetup buttons. You should locate the SecureEasySetup buttons of your devices before using the Router's SecureEasySetup feature.



NOTE: SecureEasySetup uses WPA-Personal encryption. If your current wireless devices do not support WPA-Personal security, then you cannot use SecureEasySetup on your network. You will need to manually configure your network security using the encryption supported by your existing devices.

1. Before you push any button, locate the SecureEasySetup button for each of your other SecureEasySetup devices. If you are not sure where to find this button, click **Where is my other SecureEasySetup button?**

You will see a screen showing the SecureEasySetup logo. Click the **Next** button to continue or the **Close** button to return to the *Configure Wireless Settings* screen.

You will see a screen with instructions on how to locate the SecureEasySetup hardware button. If your device does not have a hardware button, it most likely will have a software button. Click the **Next** button for instructions to locate the software button, or click the **Close** button to return to the *Configure Wireless Settings* screen.

You will see a screen with instructions on how to locate the SecureEasySetup software button. Click the **Close** button to return to the *Configure Wireless Settings* screen.

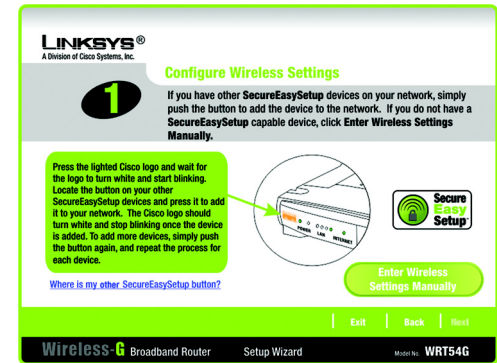


Figure 5-19: Setup Wizard's SecureEasySetup Screen



Figure 5-20: SecureEasySetup Logo

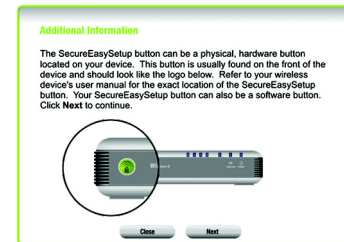


Figure 5-21: Additional Information - Hardware Button



Figure 5-22: Additional Information - Software Button

2. Press the Router's orange Cisco logo on its front panel. When the logo turns white and begins to flash, press the SecureEasySetup button on another device. The Router's Cisco logo will stop flashing when the device has been added to the network. Then repeat this procedure for each additional SecureEasySetup device.

When you have finished configuring the devices in your wireless network, click the **Next** button to continue.



NOTE: You can only add one SecureEasySetup device at a time.

3. The Setup Wizard will ask you to review your settings before it saves them. Write down these settings if you need to manually configure any non-SecureEasySetup devices.

Click the **Yes** button if you are satisfied with your settings, or click the **No** button if you do not want to save your new settings.

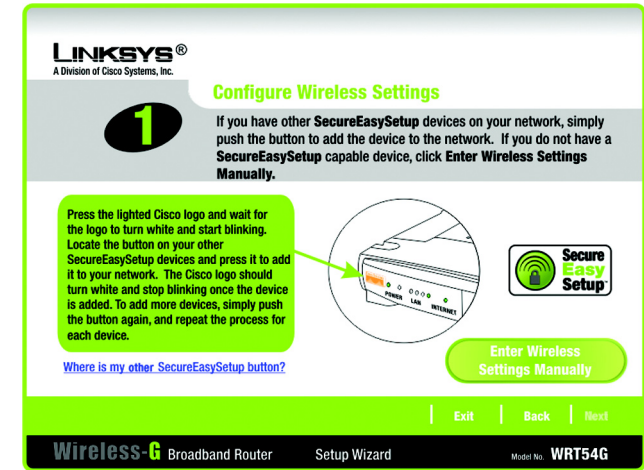


Figure 5-23: Setup Wizard's Configure Wireless Settings Screen

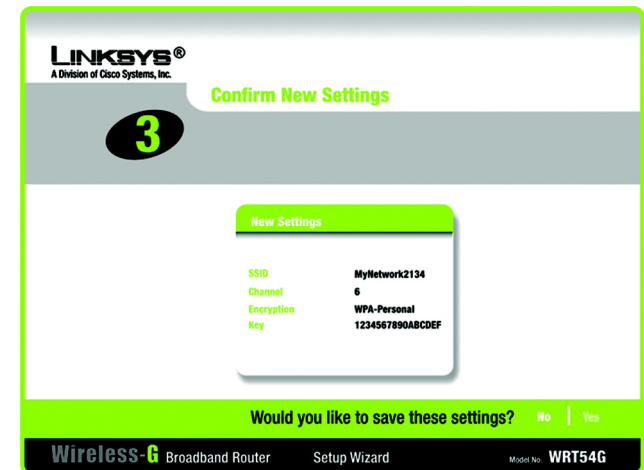


Figure 5-24: Setup Wizard's Confirm New Settings Screen