

LINKSYS®

A Division of Cisco Systems, Inc.



2.4GHz
802.11g Wireless-G

Portable USB Adapter User Guide

WIRELESS

Model No. **WUSB54GP v4**

Linksys is a registered trademark or trademark of Cisco Systems, Inc. and/or its affiliates in the U.S. and certain other countries.

CISCO SYSTEMS



Copyright and Trademarks

Specifications are subject to change without notice. Linksys is a registered trademark or trademark of Cisco Systems, Inc. and/or its affiliates in the U.S. and certain other countries. Copyright © 2004 Cisco Systems, Inc. All rights reserved. Other brands and product names are trademarks or registered trademarks of their respective holders.

How to Use this User Guide

This User Guide has been designed to make understanding networking with the Wireless-G Portable USB Adapter easier than ever. Look for the following items when reading this User Guide:



This checkmark means there is a Note of interest and is something you should pay special attention to while using the Wireless-G Portable USB Adapter.



This exclamation point means there is a Caution or warning and is something that could damage your property or the Wireless-G Portable USB Adapter.



This question mark provides you with a reminder about something you might need to do while using the Wireless-G Portable USB Adapter.

In addition to these symbols, there are definitions for technical terms that are presented like this:

word: definition.

Also, each figure (diagram, screenshot, or other image) is provided with a figure number and description, like this:

Figure 0-1: Sample Figure Description

Figure numbers and descriptions can also be found in the "List of Figures" section in the "Table of Contents".

Table of Contents

Chapter 1: Introduction	1
Welcome	1
What's in this Guide?	2
Chapter 2: Planning your Wireless Network	4
Network Topology	4
Roaming	4
Network Layout	5
Chapter 3: Software Installation and Configuration for Windows 2000	6
Chapter 4: Connecting the Portable USB Adapter	10
Using the USB Extension Base	11
Chapter 5: Driver Installation for Windows XP	12
Windows XP Wireless Zero Configuration	13
Chapter 6: Using the WLAN Monitor	15
Overview	15
Accessing the WLAN Monitor	15
The Link Information Tab	15
The Site Survey Tab	17
The Profiles Tab	18
Creating a New Profile	20
Appendix A: Troubleshooting	24
Common Problems and Solutions	24
Frequently Asked Questions	25
Security Precautions	28
Security Threats Facing Wireless Networks	28
Appendix B: Wireless Security	28
Appendix C: Windows Help	31
Appendix D: Glossary	32
Appendix E: Specifications	35
Appendix F: Warranty Information	37
Appendix G: Regulatory Information	38
Appendix H: Contact Information	39

Appendix I: Windows Help	31
Appendix J: Glossary	32
Appendix K: Specifications	35
Appendix L: Warranty Information	37
Appendix M: Regulatory Information	38
Appendix N: Contact Information	39

List of Figures

Figure 3-1: The Setup Wizard's Welcome Screen	6
Figure 3-2: The License Agreement Screen	7
Figure 3-3: The Wireless Mode Screen	7
Figure 3-4: The Ad-Hoc Mode Settings Screen	8
Figure 3-5: The Wireless Security Screen	8
Figure 3-6: The Check Settings Screen	9
Figure 3-7: The Congratulations Screen	9
Figure 4-1: The Portable USB Adapter on Your Laptop	10
Figure 4-2: A USB Port	10
Figure 4-3: The Windows 2000 Digital Signature Screen	11
Figure 5-1: XP Setup Welcome Screen	12
Figure 5-2: Windows logo testing screen	12
Figure 5-3: New Hardware Found screen	12
Figure 5-4: Windows XP Wireless Zero Configuration icon	13
Figure 5-5: Network Connection - No WEP	13
Figure 5-6: Network Connection - WEP	14
Figure 5-7: Optional Settings	14
Figure 6-1: The Wireless Icon	15
Figure 6-2: The Link Information Tab	15
Figure 6-3: The Link Information Tab - More Information	16
Figure 6-4: The Site Survey Tab	17
Figure 6-5: The Profiles Tab	18
Figure 6-6: Importing a Profile	19
Figure 6-7: Optional Settings	19
Figure 6-8: The Profiles Tab	20
Figure 6-9: Create Connection Profile	20
Figure 6-10: Profiles - Network Settings	21
Figure 6-11: Profiles - Wireless Mode	21
Figure 6-12: Profiles - Ad-Hoc Settings	22
Figure 6-13: Profiles - Security Settings	22

Figure 6-14: Profiles - Confirm New Settings	23
Figure 6-15: Profiles - Congratulations	23

Chapter 1: Introduction

Welcome

Thank you for choosing the Wireless-G Portable USB Adapter. With this Adapter, your wireless networking experience will be faster and easier than ever.

How does the Adapter do this? Like all wireless products, the Adapter allows for greater range and mobility within your wireless network. Connecting to your PC via the USB port means that this Adapter leaves the PC's slots open for other purposes. This adapter communicates over the 802.11g wireless standard, one of the newest wireless standards, to communicate with your network.

But what does all of this mean?

Networks are useful tools for sharing computer resources. You can access one printer from different computers and access data located on another computer's hard drive. Networks are even used for playing multiplayer video games. So, networks are not only useful in homes and offices, they can also be fun.

PCs equipped with wireless cards and adapters can communicate without cumbersome cables. By sharing the same wireless settings, within their transmission radius, they form a wireless network.

Use the instructions in this Guide to help you connect the Adapter, set it up, and configure it for your network. These instructions should be all you need to get the most out of the Adapter.

network: a series of computers or devices connected for the purpose of data sharing, storage, and/or transmission between users.

adapter: a device that adds network functionality to your PC.

802.11g: an IEEE wireless networking standard that specifies a maximum data transfer rate of 54Mbps, an operating frequency of 2.4GHz, and backward compatibility with 802.11b devices.

What's in this Guide?

This user guide covers the steps for setting up and using the Wireless-B USB Network Adapter.

- **Chapter 1: Introduction**
This chapter describes the Adapter's applications and this User Guide.
- **Chapter 2: Planning Your Wireless Network**
This chapter discusses a few of the basics about wireless networking.
- **Chapter 3: Software Installation and Configuration for Windows 2000**
This chapter instructs you on how to install the Adapter's Setup Wizard and Configure the Adapter for Windows 2000.
- **Chapter 4: Connecting the Portable USB Adapter**
This chapter shows you how to connect the Adapter to your PC's USB port.
- **Chapter 5: Driver Installation and Configuration for Windows XP**
This chapter explains how to install the Adapter's driver and use Windows Zero Configuration.
- **Chapter 6: Using the WLAN Monitor**
This chapter show you how to use the Adapter's WLAN Monitor.
- **Appendix A: Troubleshooting**
This appendix describes some problems and solutions, as well as frequently asked questions, regarding installation and use of the Adapter.
- **Appendix B: Wireless Security**
This appendix discusses security issues regarding wireless networking and measures you can take to help protect your wireless network.
- **Appendix C: Windows Help**
This appendix describes how you can use Windows Help for instructions about networking, such as installing the TCP/IP protocol.
- **Appendix D: Glossary**
This appendix gives a brief glossary of terms frequently used in networking.
- **Appendix E: Specifications**
This appendix provides the Adapter's technical specifications.

Wireless-G Portable USB Adapter

- **Appendix F: Warranty Information**
This appendix supplies the Adapter's warranty information.
- **Appendix G: Regulatory Information**
This appendix supplies the Adapter's regulatory information.
- **Appendix H: Contact Information**
This appendix provides contact information for a variety of Linksys resources, including Technical Support.

Chapter 2: Planning your Wireless Network

Network Topology

A wireless network is a group of computers, each equipped with one wireless adapter. Computers in a wireless network must be configured to share the same radio channel. Several PCs equipped with wireless cards or adapters can communicate with one another to form an ad-hoc network.

Linksys wireless adapters also provide users access to a wired network when using an access point or wireless router. An integrated wireless and wired network is called an infrastructure network. Each wireless PC in an infrastructure network can talk to any computer in a wired network infrastructure via the access point or wireless router.

An infrastructure configuration extends the accessibility of a wireless PC to a wired network, and can double the effective wireless transmission range for two wireless adapter PCs. Since an access point is able to forward data within a network, the effective transmission range in an infrastructure network can be doubled.

Roaming

Infrastructure mode also supports roaming capabilities for mobile users. Roaming means that you can move your wireless PC within your network and the access points will pick up the wireless PC's signal, providing that they both share the same channel and SSID.

Before enabling you consider roaming, choose a feasible radio channel and optimum access point position. Proper access point positioning combined with a clear radio signal will greatly enhance performance.

ad-hoc: a group of wireless devices communicating directly with each other (peer-to-peer) without the use of an access point

access point: device that allows wireless-equipped computers and other devices to communicate with a wired network.

infrastructure: Configuration in which a wireless network is bridged to a wired network via an access point.

roaming: the ability to take a wireless device from one access point's range to another without losing the connection.

ssid: your wireless network's name

Network Layout

Linksys wireless access points and wireless routers have been designed for use with 802.11a, 802.11b, and 802.11g products. With 802.11g products communicating with the 802.11b standard and some products incorporating both "a" and "g", products using these standards can communicate with each other.

Access points and wireless routers are compatible with 802.11a, 802.11b and 802.11g adapters, such as the PC Cards for your laptop computers, PCI Card for your desktop PC, and USB Adapters for when you want to enjoy USB connectivity. Wireless products will also communicate with the wireless PrintServer.

When you wish to connect your wired network with your wireless network, network ports on access points and wireless routers can be connected to any of Linksys's switches or routers.

With these, and many other, Linksys products, your networking options are limitless. Go to the Linksys website at www.linksys.com for more information about wireless products.

802.11b: *an IEEE wireless networking standard that specifies a maximum data transfer rate of 11Mbps and an operating frequency of 2.4GHz.*

switch: *device that is the central point of connection for computers and other devices in a network, so data can be shared at full transmission speeds.*

router: *a networking device that connects multiple networks together, such as a local network and the Internet.*

Chapter 3: Software Installation and Configuration for Windows 2000

The Wireless-G Portable USB Adapter Setup Wizard will guide you through the installation procedure. The Setup Wizard will install the WLAN Monitor and driver, as well as configure the Adapter.

1. Insert the Setup Wizard CD-ROM into your CD-ROM drive. The Setup Wizard should run automatically, and the Welcome screen should appear. If it does not, click the **Start** button and choose **Run**. In the field that appears, enter **D:\setup.exe** (if "D" is the letter of your CD-ROM drive).



IMPORTANT: You must run the Setup Wizard to install the software before connecting the Adapter. If you are running Windows XP, connect the Adapter as shown in Chapter 4 and proceed to Chapter 5.



Figure 3-1: The Setup Wizard's Welcome Screen

2. Read the License Agreement displayed on the following screen and click the **Next** button to continue the installation. If you click the **Cancel** button, you will end the installation.

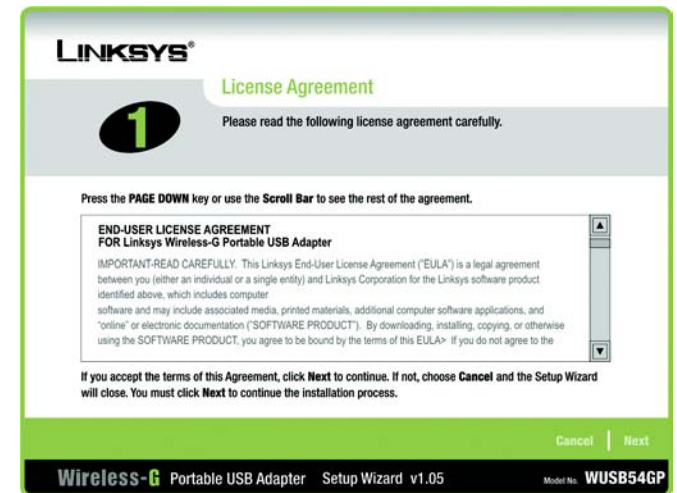


Figure 3-2: The License Agreement Screen

3. The Wireless Mode screen will ask for some information about your wireless network. In the **SSID** field, enter your network's SSID (Service Set Identifier). The SSID is your network name and must be identical for all devices in the network. The default setting is **linksys** (all lowercase).

Next, choose a wireless mode. Click the **Infrastructure Mode** radio button if you want your wireless computers to network with computers on your wired network using an access point. Click the **Ad-Hoc Mode** radio button if you want multiple wireless computers to network directly with each other.

Click the **Next** button to continue, or click the **Back** button to return to the previous page.

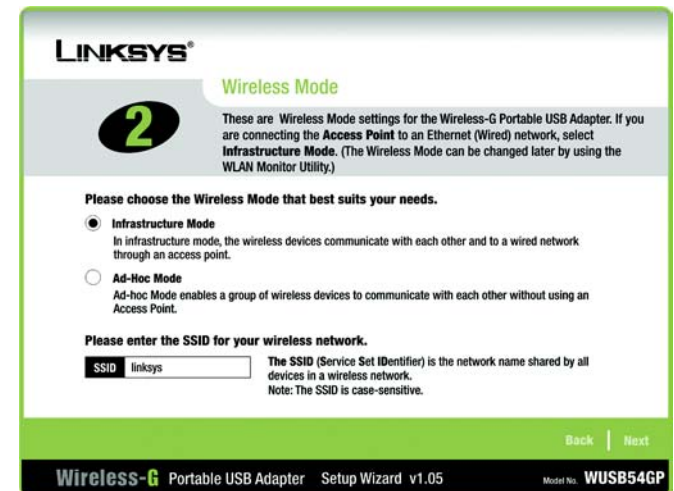


Figure 3-3: The Wireless Mode Screen

- If you chose Infrastructure Mode, go to Step 5 now. If you chose Ad-Hoc Mode, select the correct operating channel for your network from the Channel drop-down menu. Then, select the Network Mode from the drop-down menu. Click the **Next** button, and go to Step 5. Click the **Back** button to change any settings.

Channel - The channel you choose should match the channel set on the other devices in your wireless network. If you are unsure about which channel to use, select the default channel (**Channel 6**).

Network Mode - Keep the default setting, **Mixed**, if you have Wireless-G and Wireless-B devices in your network. Select **G-Only** if you have only Wireless-G devices in your network.



Figure 3-4: The Ad-Hoc Mode Settings Screen

- The Wireless Security screen allows you to set the security level for your network. Enable or disable Wired Equivalent Privacy (WEP) encryption for your wireless network. If you enable WEP, enter a Passphrase or WEP key. Click the **Next** button to continue or the **Back** button to return to the previous screen. For more information about the information on this screen, you can also click the **Help** button.

WEP - If you do not want to use WEP encryption, choose Disabled. To use WEP encryption (recommended to increase network security), select 64-bit or 128-bit WEP from the drop-down menu, and enter either a Passphrase or WEP key.

Passphrase - Instead of manually entering WEP keys, you can enter a Passphrase, so that a WEP key is automatically generated. It is case-sensitive and should not be longer than 16 alphanumeric characters. This passphrase must match the passphrase of your wireless network and is compatible with other Linksys wireless products only. (If you have any non-Linksys wireless products, enter the WEP key(s) manually on those products.)

WEP Key - This WEP key must match the WEP key of your wireless network. If you are using 64-bit WEP encryption, then the key must consist of exactly ten hexadecimal characters. If you are using 128-bit WEP encryption, then the key must consist of exactly 26 hexadecimal characters. Valid hexadecimal characters are "0" to "9" and "A" to "F".

TX Key - This allows you to access different WEP keys used by different routers or access points in your network. Choose the TX Key used in that network. For instance, if the device uses TX Key 3, use TX Key 3. If you're not using multiple WEP Keys, leave this set at 1.

Authentication - Select the Authentication method used by your network. Open Authentication does not employ WEP keys. Shared Authentication employs WEP encryption. Auto (the default setting) chooses the method of the network to which you're connecting.

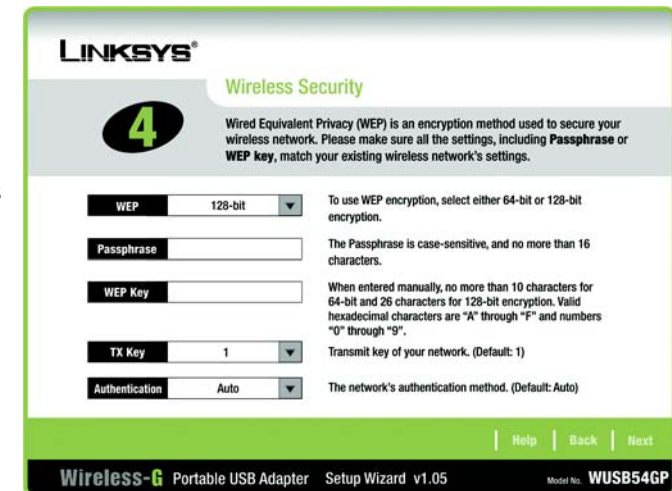


Figure 3-5: The Wireless Security Screen

Wireless-G Portable USB Adapter

- At this point, a screen stating that a digital signature was not found may appear. This software has been tested and found to work properly with Windows 2000. Click the **Yes** button to continue installation.
- The Setup Wizard will ask you to review your settings before it starts to copy files. Click the **Next** button to save these settings, or click the **Back** button to change any settings.
- After the files have been successfully copied, the Congratulations screen will appear. Click the **Exit** button.

Now that the software installation is complete, proceed to Chapter 4: Connecting the Wireless-G Portable USB Adapter.

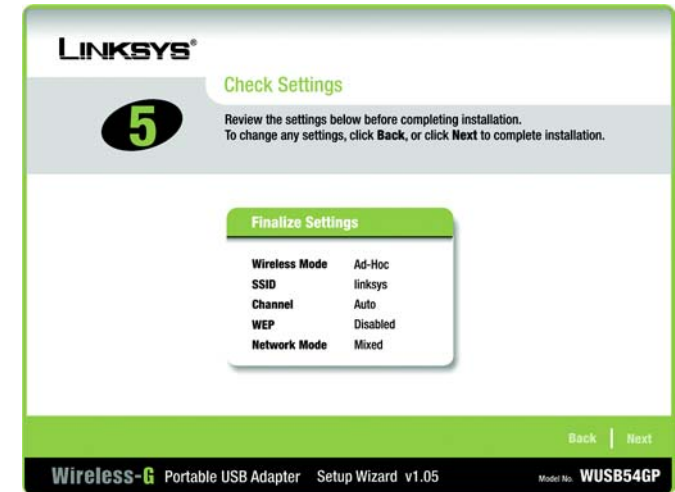


Figure 3-6: The Check Settings Screen



Figure 3-7: The Congratulations Screen

software: instructions for the computer

Chapter 4: Connecting the Portable USB Adapter

1. To connect the Portable USB Adapter to your PC, simply plug the USB end into your PC's available USB port.



Figure 4-1: The Portable USB Adapter on Your Laptop



IMPORTANT: Windows 2000 users must run the Setup Wizard to install the software before connecting the Portable USB Adapter.



IMPORTANT: Windows XP users must connect the Portable USB Adapter before installing the software, shown in Chapter 5.

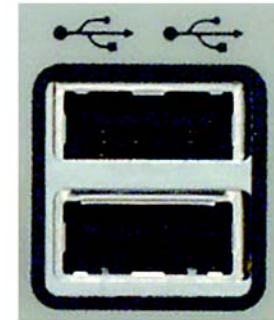


Figure 4-2: A USB Port

port: the connection point on a computer or networking device used for plugging in a cable or an adapter.

Wireless-G Portable USB Adapter

2. When Windows 2000 begins installing the Network Adapter's driver file, a screen stating that a digital signature was not found may appear. This software has been tested and found to work properly with Windows 2000. Click the **Yes** button to continue installation.

If your PC is running Windows XP, proceed to "Chapter 5: Driver Installation for Windows XP."

If your PC is running Windows 2000, the installation of the Wireless-G Portable USB Adapter is complete. If you want to check the link information, search for available wireless networks, or make additional configuration changes, proceed to "Chapter 6: Using the WLAN Monitor."



Figure 4-3: The Windows 2000 Digital Signature Screen

Using the USB Extension Base

For better reception on the Portable USB Adapter, you can attach the USB Extension Base to your PC's USB port and connect the Portable USB Adapter to the USB Extension Base. Then, you can place the USB Extension Base more strategically, on a higher platform or away from interference, for better reception.

Chapter 5: Driver Installation for Windows XP

After connecting the Adapter to your PC, as shown in Chapter 4, you'll need to install the driver.

Windows XP will automatically detect the Adapter. Insert the Setup CD-ROM into the CD-ROM drive. Click the radio button next to **Install the software automatically (Recommended)**. Then, click the **Next** button.



Figure 5-1: XP Setup Welcome Screen

A Windows logo testing screen may appear, asking if you wish to discontinue installation. This software has been tested and found to work properly with Windows XP. Click the **Continue Anyway** button to continue installation.



Figure 5-2: Windows logo testing screen

The next screen shows that the Wizard is complete. Click the **Finish** button. The drivers are now installed.



Figure 5-3: New Hardware Found screen

Windows XP Wireless Zero Configuration

1. After installing the Adapter, the Windows XP Wireless Zero Configuration icon will appear in your computer's system tray. Double-click the icon.



NOTE: Windows XP has a built-in configuration tool. Use Windows XP Wireless Zero Configuration (in the system tray at the bottom of your screen) to configure the Adapter.

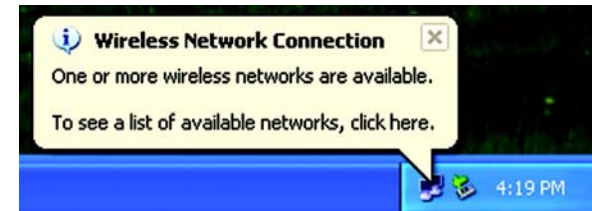


Figure 5-4: Windows XP Wireless Zero Configuration icon



NOTE: Steps 2 and 3 are the instructions and screenshots for Windows XP with Service Pack 1 installed. If you have not installed Service Pack 1, select the network you want, and click the **Connect** button. If the network has WEP encryption enabled, enter the WEP key in the Network key field, and then click the **Connect** button.

2. The screen that appears will show any available wireless network. Select the network you want.

If this network has WEP encryption enabled, go to step 3.

If this network does not have WEP encryption enabled, you will be asked to select a network. Make sure the box next to **Allow me to connect to the selected wireless network, even though it is not secure** is checked. Then, click the **Connect** button, and go to step 4.

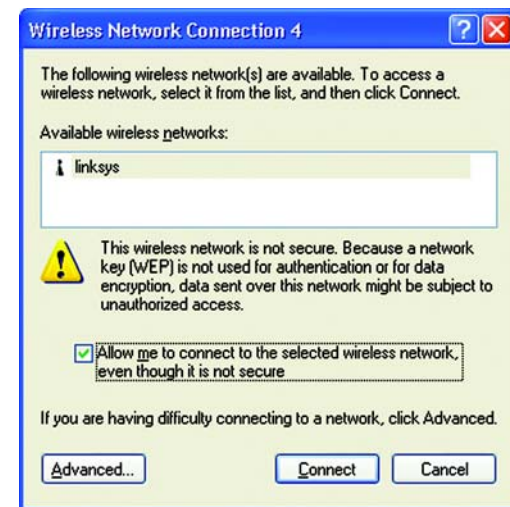


Figure 5-5: Network Connection - No WEP

3. If WEP is enabled, you will be asked to enter the network (WEP) key. Enter the WEP key of your wireless network in the Network key field, and re-enter it in the Confirm network key field. Then, click the **Connect** button, and proceed to step 4.

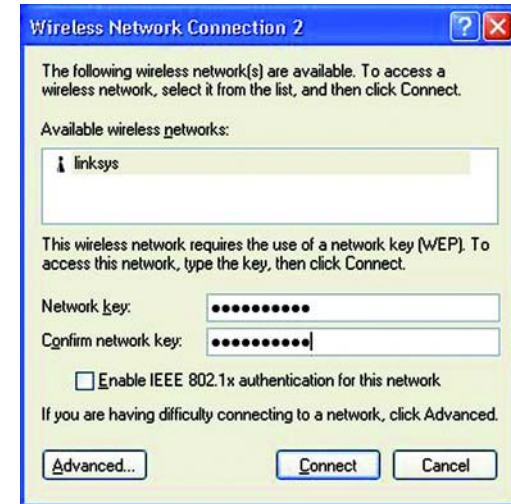


Figure 5-6: Network Connection - WEP



NOTE: Windows XP Wireless Zero Configuration does not support the use of a passphrase. Enter the exact WEP key used by your access point.

4. The Zero Configuration icon, showing a connection, will appear if your connection is active.



Figure 5-7: Optional Settings

For more information about wireless networking on a Windows XP computer, click the **Start** button, select **Help**, and choose **Support**. Enter the keyword wireless in the field provided, and press the **Enter** key.

Congratulations! The installation of the Wireless-G USB Network Adapter is complete.

Chapter 6: Using the WLAN Monitor

Overview

Use the WLAN Monitor to check the link information, search for available wireless networks, or create profiles that hold different configuration settings.

Accessing the WLAN Monitor

After installing the Adapter, the Wireless-G USB Network Adapter WLAN Monitor icon will appear in your system tray. Double-click the icon.

The *Link Information* tab will appear. From this tab, you can find out the strength of the current wireless signal as well as its quality. You can also click the **More Information** button to view additional status information about the current wireless connection. To search for available wireless networks, click the **Site Survey** tab. To perform configuration changes, click the **Profiles** tab.

The Link Information Tab

The *Link Information* tab displays the signal strength and link quality information about the current connection and provides a button to click for additional status information.

Ad-Hoc Mode or Infrastructure Mode - The screen indicates whether the Adapter is currently working in ad-hoc or infrastructure mode.

Signal Strength - The Signal Strength bar indicates the signal strength.

Link Quality - The Link Quality bar indicates the quality of the wireless network connection.

Click the **More Information** button to view more information about the wireless network connection.

Click the **X (Close)** button in the upper right corner to exit the WLAN Monitor.



Figure 6-1: The Wireless Icon



Figure 6-2: The Link Information Tab

Clicking the More Information button displays much more information about the Adapter's connection, as shown below:

Wireless Network Status

Status - The status of the wireless network connection.

SSID - The unique name of the wireless network.

Wireless Mode - The mode of the wireless network currently in use.

Transfer Rate - The data transfer rate of the current connection.

Channel - The channel to which the wireless network devices are set.

WEP - The status of the WEP encryption security feature.

MAC - The MAC address of the wireless network's access point.

TCP/IP Setting

IP Address - The IP Address of the Adapter.

Subnet Mask - The Subnet Mask of the Adapter.

Default Gateway - The Default Gateway address of the Adapter.

DNS - The DNS address of the Adapter.

DHCP - The status of the DHCP client.

Signal Strength - The Signal Strength bar indicates the signal strength.

Link Quality - The Link Quality bar indicates the quality of the wireless network connection.

Click the **Back** button to return to the initial *Link Information* tab. Click the **X** (Close) button in the upper right corner to exit the WLAN Monitor.

wep: a method of encrypting data transmitted on a wireless network for greater security.



Figure 6-3: The Link Information Tab - More Information

encryption: encoding data to prevent it from being read by unauthorized people

ip address: the address used to identify a computer or device on a network

subnet mask: an address code that determines the size of a network

default gateway: a device that forwards Internet traffic from your local area network

dns: the IP address of your ISP's server, which translates the names of websites into IP addresses.

dhcp: a protocol that lets one device on a local network, known as a DHCP server, assign temporary IP addresses to the other network devices, typically computers.

The Site Survey Tab

The Site Survey tab displays available networks and allows you to connect to them. The information about these networks are displayed as below:

SSID - The SSID or unique name of the wireless network.

CH - The channel upon which the network broadcasts.

Signal - The percentage of signal strength, from 0 to 100%.

Site Information

SSID - The SSID or unique name of the wireless network.

Wireless Mode - The mode of the wireless network currently in use.

Channel - The channel to which the wireless network devices are set.

WEP - The status of the WEP encryption security feature.

MAC - The MAC address of the wireless network's access point.

Refresh - Click the **Refresh** button to perform a new search for wireless devices.

Connect - To connect to one of the networks on the list, select the wireless network, and click the **Connect** button. If the wireless network has WEP encryption enabled, you will need to configure WEP encryption with that network.

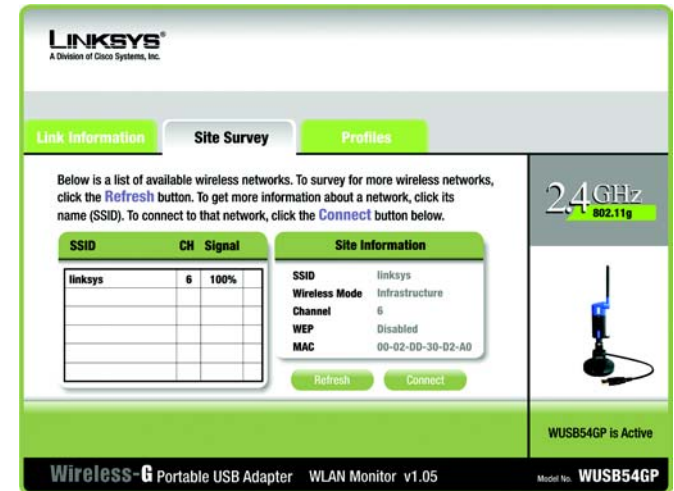


Figure 6-4: The Site Survey Tab

mac: the unique address that a manufacturer assigns to each networking device

The Profiles Tab

The Profiles screen lets you save different configuration profiles for different network setups. You can also import or export profiles. The default profile holds the initial configuration saved when you ran the Setup Wizard.

Profile - Name of the connection profile.

SSID - The wireless network's unique name, as set in the connection profile.

Profile Information

Wireless Mode - The mode of the wireless network currently in use.

Transfer Rate - The data transfer rate of the current connection. (In Auto mode, the Adapter dynamically shifts to the fastest data transfer rate possible at any given time.)

Channel - The channel to which the wireless network devices are set.

WEP - The status of the WEP encryption security feature.

Authentication - The authentication setting for the network.

Connect - To connect to a wireless network using a specific profile, select the profile, and click the **Connect** button.

New - Click the **New** button to create a new profile. See the next section, "Creating a New Profile," for detailed instructions.

Edit - Select a profile, and click the **Edit** button to change an existing profile.



Figure 6-5: The Profiles Tab

Import - Click the **Import** button to import a profile that has been saved in another location. Select the appropriate file and click the **Open** button.

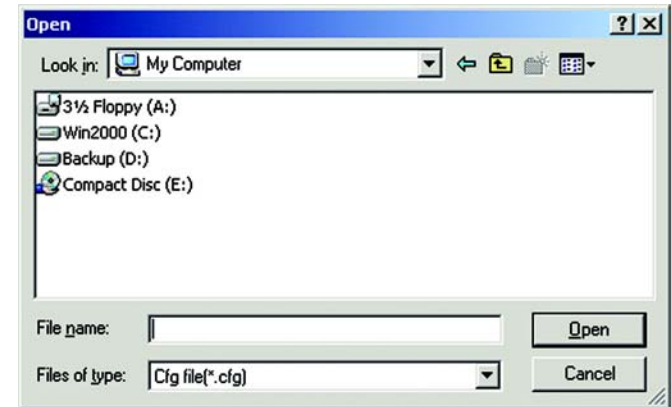


Figure 6-6: Importing a Profile

Export - To save the profile(s) in a different location, click the **Export** button. Direct Windows to the appropriate folder and click the **OK** button.

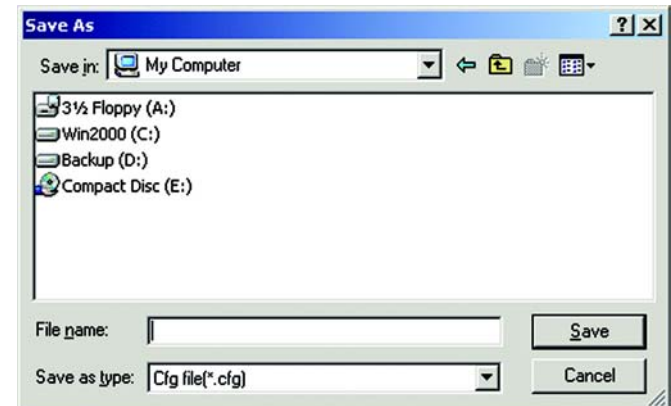


Figure 6-7: Optional Settings

Delete - Click the **Delete** button to delete a profile.

Click the **X** (Close) button in the upper right corner to exit the WLAN Monitor.

Creating a New Profile

1. On the *Profiles* tab, click the **New** button to create a new profile.

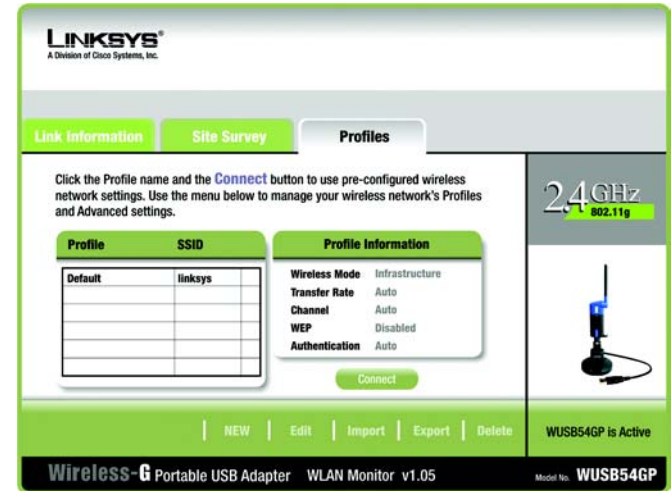


Figure 6-8: The Profiles Tab

2. When the Create connection profile screen appears, enter a name for the new profile. Click **OK** to save the profile name or click **Cancel** to return to the previous screen.



Figure 6-9: Create Connection Profile

3. Enter your network's settings on the *Network Settings* screen, which appears next.

If your network has a DHCP server (or Router), click the radio button next to **Obtain an IP address automatically (DHCP)** and click the **Next** button to continue.

If your network does not have a DHCP server (or router), click the radio button next to **Specify the IP address**. Enter an **IP Address**, **Subnet Mask**, **Default Gateway**, and **DNS** appropriate for your network. Enter each address in this format: xxx.xxx.xxx.xxx (the x's represent the numbers that make up each address). You must specify the IP Address and Subnet Mask on this screen. If you are unsure about the Default Gateway and DNS addresses, then leave these fields alone.

IP Address - This IP Address must be unique to your network.

Subnet Mask - The Adapter's Subnet Mask must be the same as your wired network's Subnet Mask.

Default Gateway - Enter the IP address of your network's Gateway here.

DNS - Enter the DNS addresses of your network here.

Click the **Next** button to continue or the **Cancel** button to return to the previous screen.

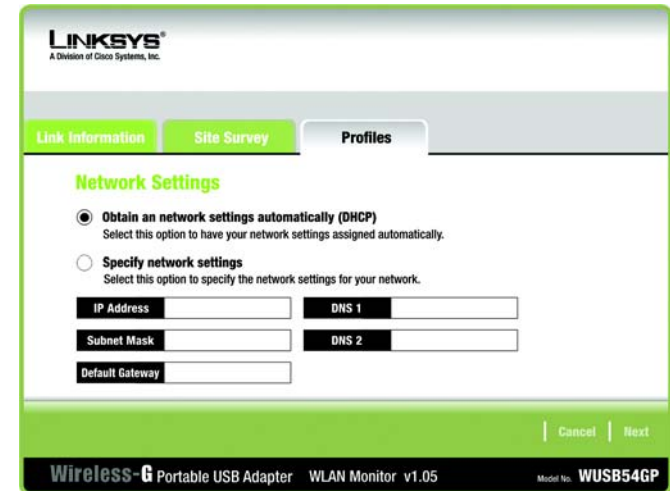


Figure 6-10: Profiles - Network Settings

4. The *Wireless Mode* screen shows a choice of two wireless modes. Click the **Infrastructure Mode** radio button if you want your wireless computers to communicate with computers on your wired network via a wireless access point. Click the **Ad-Hoc Mode** radio button if you want multiple wireless computers to communicate directly with each other. Click the **Next** button to continue or the **Back** button to return to the previous screen.

SSID - The SSID is the unique name shared among all devices in your wireless network. The SSID must be identical for all devices in the wireless network. It is case-sensitive and must not exceed 32 alphanumeric characters, which can be any keyboard character.

Infrastructure Mode - This mode allows wireless and wired networks to communicate through an access point.

Ad-Hoc Mode - This mode allows wireless-equipped computers to communicate directly with each other. No access point is used.

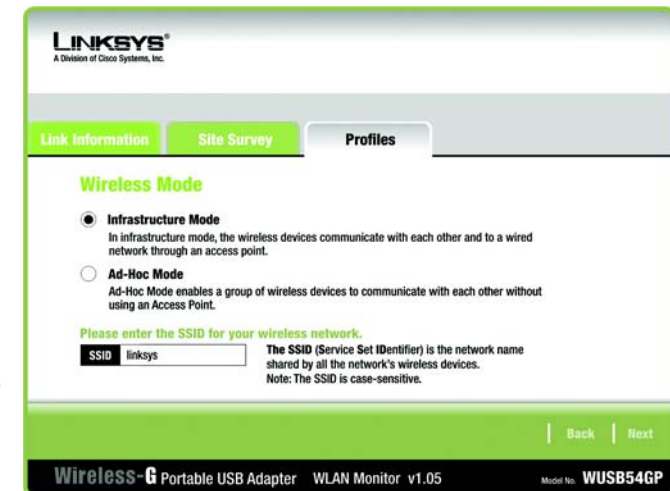


Figure 6-11: Profiles - Wireless Mode

5. The **Ad-Hoc Mode Settings** screen, for those who chose an Ad-hoc network, will appear next. Select the correct operating channel for your network from the Channel drop-down menu. Then, select the Network Mode from the drop-down menu. Click the **Next** button to continue or click the **Back** button to change any settings.

Channel - The channel you choose should match the channel set on the other devices in your wireless network. If you are unsure about which channel to use, select the default channel (Channel 6).

Network Mode - Select Mixed Mode, and both Wireless-G and Wireless-B computers will be allowed on the network, but the speed will be reduced. Select G-Only Mode for maximum speed, but no Wireless-B users will be allowed on the network.

6. The **Security Settings** screen allows you to set the security level for your network. Enable or disable Wired Equivalent Privacy (WEP) encryption for your wireless network. If you enable WEP, enter a Passphrase or WEP key. Click the **Next** button to continue or the **Back** button to return to the previous screen. For more information about the information on this screen, you can also click the **Help** button.

WEP - If you do not want to use WEP encryption, choose Disabled. To use WEP encryption (recommended to increase network security), select 64-bit or 128-bit WEP from the drop-down menu, and enter either a Passphrase or WEP key.

Passphrase - Instead of manually entering WEP keys, you can enter a Passphrase, so that a WEP key is automatically generated. It is case-sensitive and should not be longer than 16 alphanumeric characters. This passphrase must match the passphrase of your wireless network and is compatible with other Linksys wireless products only. (If you have any non-Linksys wireless products, enter the WEP key(s) manually on those products.)

WEP Key - This WEP key must match the WEP key of your wireless network. If you are using 64-bit WEP encryption, then the key must consist of exactly ten hexadecimal characters. If you are using 128-bit WEP encryption, then the key must consist of exactly 26 hexadecimal characters. Valid hexadecimal characters are "0" to "9" and "A" to "F".

TX Key - This allows you to access different WEP keys used by different routers or access points in your network. Choose the TX Key used in that network. For instance, if the device uses TX Key 3, use TX Key 3. If you're not using multiple WEP Keys, leave this set at 1.

Authentication - Select the Authentication method used by your network. Open Authentication does not employ WEP keys. Shared Authentication employs WEP encryption. Auto (the default setting) chooses the method of the network to which you're connecting.

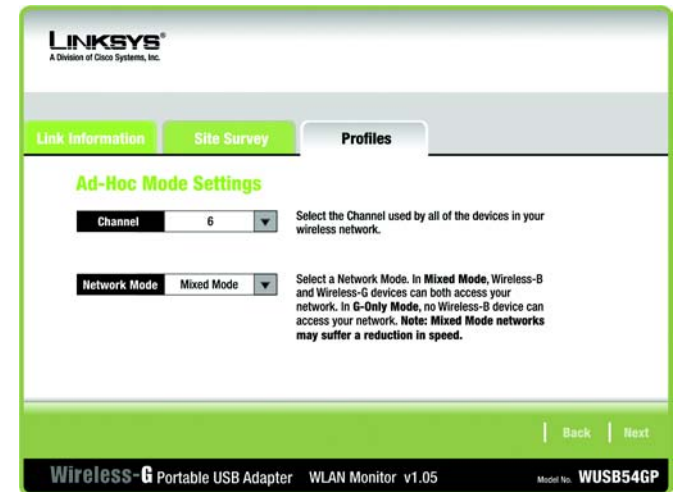


Figure 6-12: Profiles - Ad-Hoc Settings



Figure 6-13: Profiles - Security Settings

7. The **Confirm New Settings** screen will appear. To save the new settings, click the **Save** button. To cancel the settings and return to the Profiles screen, click the **Exit** button. To edit the new settings, click the **Back** button.



Figure 6-14: Profiles - Confirm New Settings

8. The Congratulations screen shows that the new Profile has successfully been configured. Click **Connect to Network** to implement the new settings immediately and return to the Link Information screen. Click **Return to Profiles Screen** to keep the current settings active, and return to the Profiles screen so that you can edit your profile or create another profile.

You have successfully created a connection profile. Click the X (Close) button in the upper right corner to exit the WLAN Monitor.



Figure 6-15: Profiles - Congratulations

Appendix A: Troubleshooting

This appendix provides solutions to problems usually encountered during the installation and operation of the Adapter. Read the description below to solve your problems. If you can't find an answer here, check the Linksys website at www.linksys.com.

Common Problems and Solutions

1. My computer does not recognize the USB Network Adapter.

- Make sure that the USB Network Adapter is properly inserted into the USB port.
- Also, make sure that the USB Controller is enabled in the BIOS. Check with your motherboard User Guide for more information.

2. The USB Network Adapter does not work properly.

- Reinsert the USB Network Adapter into the notebook or desktop's USB port.
- Right-click on My Computer, and select Properties. Select the Adapter, then chose the Device Manager tab, and click on the Network Adapter. You will find the USB Network Adapter if it is installed successfully. If you see a yellow exclamation mark, the resources may be conflicting and you must follow the steps below:
 - Uninstall the driver software from your PC.
 - Restart your PC and repeat the hardware and software installation as specified in this User Guide.

3. I cannot communicate with the other computers linked via Ethernet in the Infrastructure configuration.

- Make sure that the notebook or desktop is powered on.
- Make sure that your USB Network Adapter is configured on the same channel, SSID, and WEP as the other computers in the Infrastructure configuration.

Frequently Asked Questions

Can I run an application from a remote computer over the wireless network?

This will depend on whether or not the application is designed to be used over a network. Consult the application's user guide to determine if it supports operation over a network.

Can I play computer games with other members of the wireless network?

Yes, as long as the game supports multiple players over a LAN (local area network). Refer to the game's user guide for more information.

What is the IEEE 802.11b standard?

It is one of the IEEE standards for wireless networks. The 802.11b standard allows wireless networking hardware from different manufacturers to communicate, provided that the hardware complies with the 802.11b standard. The 802.11b standard states a maximum data transfer rate of 11Mbps and an operating frequency of 2.4GHz.

What is the IEEE 802.11g standard?

It is one of the IEEE standards for wireless networks. The 802.11g standard allows wireless networking hardware from different manufacturers to communicate, provided that the hardware complies with the 802.11g standard. The 802.11g standard states a maximum data transfer rate of 54Mbps and an operating frequency of 2.4GHz.

What IEEE 802.11b features are supported?

The product supports the following IEEE 802.11b functions:

- CSMA/CA plus Acknowledge protocol
- Multi-Channel Roaming
- Automatic Rate Selection
- RTS/CTS feature
- Fragmentation
- Power Management

What IEEE 802.11g features are supported?

The product supports the following IEEE 802.11g functions:

- CSMA/CA plus Acknowledge protocol
- OFDM protocol
- Multi-Channel Roaming
- Automatic Rate Selection
- RTS/CTS feature
- Fragmentation
- Power Management

What is ad-hoc mode?

When a wireless network is set to ad-hoc mode, the wireless-equipped computers are configured to communicate directly with each other. The ad-hoc wireless network will not communicate with any wired network.

What is infrastructure mode?

When a wireless network is set to infrastructure mode, the wireless network is configured to communicate with a wired network through a wireless access point.

What is roaming?

Roaming is the ability of a portable computer user to communicate continuously while moving freely throughout an area greater than that covered by a single access point. Before using the roaming function, the workstation must make sure that it is the same channel number with the access point of dedicated coverage area.

To achieve true seamless connectivity, the wireless LAN must incorporate a number of different functions. Each node and access point, for example, must always acknowledge receipt of each message. Each node must maintain contact with the wireless network even when not actually transmitting data. Achieving these functions simultaneously requires a dynamic RF networking technology that links access points and nodes. In such a system, the user's end node undertakes a search for the best possible access to the system. First, it evaluates such factors as signal strength and quality, as well as the message load currently being carried by each access point and the distance of each access point to the wired backbone. Based on that information, the node next selects the right access point and registers its address. Communications between end node and host computer can then be transmitted up and down the backbone.

As the user moves on, the end node's RF transmitter regularly checks the system to determine whether it is in touch with the original access point or whether it should seek a new one. When a node no longer receives acknowledgment from its original access point, it undertakes a new search. Upon finding a new access point, it then re-registers, and the communication process continues.

What is ISM band?

The FCC and their counterparts outside of the U.S. have set aside bandwidth for unlicensed use in the ISM (Industrial, Scientific and Medical) band. Spectrum in the vicinity of 2.4 GHz, in particular, is being made available worldwide. This presents a truly revolutionary opportunity to place convenient high-speed wireless capabilities in the hands of users around the globe.

What is Spread Spectrum?

Spread Spectrum technology is a wideband radio frequency technique developed by the military for use in reliable, secure, mission-critical communications systems. It is designed to trade off bandwidth efficiency for reliability, integrity, and security. In other words, more bandwidth is consumed than in the case of narrowband transmission, but the trade-off produces a signal that is, in effect, louder and thus easier to detect, provided that

the receiver knows the parameters of the spread-spectrum signal being broadcast. If a receiver is not tuned to the right frequency, a spread-spectrum signal looks like background noise. There are two main alternatives, Direct Sequence Spread Spectrum (DSSS) and Frequency Hopping Spread Spectrum (FHSS).

What is DSSS? What is FHSS? And what are their differences?

Frequency-Hopping Spread-Spectrum (FHSS) uses a narrowband carrier that changes frequency in a pattern that is known to both transmitter and receiver. Properly synchronized, the net effect is to maintain a single logical channel. To an unintended receiver, FHSS appears to be short-duration impulse noise. Direct-Sequence Spread-Spectrum (DSSS) generates a redundant bit pattern for each bit to be transmitted. This bit pattern is called a chip (or chipping code). The longer the chip, the greater the probability that the original data can be recovered. Even if one or more bits in the chip are damaged during transmission, statistical techniques embedded in the radio can recover the original data without the need for retransmission. To an unintended receiver, DSSS appears as low power wideband noise and is rejected (ignored) by most narrowband receivers.

Would the information be intercepted while transmitting on air?

WLAN features two-fold protection in security. On the hardware side, as with Direct Sequence Spread Spectrum technology, it has the inherent security feature of scrambling. On the software side, WLAN offers the encryption function (WEP) to enhance security and access control.

What is WEP?

WEP is Wired Equivalent Privacy, a data privacy mechanism based on a 64-bit or 128-bit shared key algorithm, as described in the IEEE 802.11 standard.

Appendix B: Wireless Security

Linksys wants to make wireless networking as safe and easy for you as possible. The current generation of Linksys products provide several network security features, but they require specific action on your part for implementation. So, keep the following in mind whenever you are setting up or using your wireless network.

Security Precautions

The following is a complete list of security precautions to take (at least steps 1 through 5 should be followed):

1. Change the default SSID.
2. Disable SSID Broadcast.
3. Change the default password for the Administrator account.
4. Enable MAC Address Filtering.
5. Change the SSID periodically.
6. Use the highest encryption algorithm possible. Use WPA if it is available. Please note that this may reduce your network performance.
7. Change the WEP encryption keys periodically.



Note: Some of these security features are available only through the network router or access point. Refer to the router or access point's documentation for more information.

Security Threats Facing Wireless Networks

Wireless networks are easy to find. Hackers know that in order to join a wireless network, wireless networking products first listen for "beacon messages". These messages can be easily decrypted and contain much of the network's information, such as the network's SSID (Service Set Identifier). Here are the steps you can take:

Change the administrator's password regularly. With every wireless networking device you use, keep in mind that network settings (SSID, WEP keys, etc.) are stored in its firmware. Your network administrator is the only person who can change network settings. If a hacker gets a hold of the administrator's password, he, too, can change those settings. So, make it harder for a hacker to get that information. Change the administrator's password regularly.

SSID. There are several things to keep in mind about the SSID:

Wireless-G Portable USB Adapter

1. Disable Broadcast
2. Make it unique
3. Change it often

Most wireless networking devices will give you the option of broadcasting the SSID. While this option may be more convenient, it allows anyone to log into your wireless network. This includes hackers. So, don't broadcast the SSID.

Wireless networking products come with a default SSID set by the factory. (The Linksys default SSID is "linksys".) Hackers know these defaults and can check these against your network. Change your SSID to something unique and not something related to your company or the networking products you use.

Change your SSID regularly so that any hackers who have gained access to your wireless network will have to start from the beginning in trying to break in.

MAC Addresses. Enable MAC Address filtering. MAC Address filtering will allow you to provide access to only those wireless nodes with certain MAC Addresses. This makes it harder for a hacker to access your network with a random MAC Address.

WEP Encryption. Wired Equivalent Privacy (WEP) is often looked upon as a cure-all for wireless security concerns. This is overstating WEP's ability. Again, this can only provide enough security to make a hacker's job more difficult.

There are several ways that WEP can be maximized:

1. Use the highest level of encryption possible
2. Use "Shared Key" authentication
3. Change your WEP key regularly

WPA. Wi-Fi Protected Access (WPA) is the newest and best available standard in Wi-Fi security. Two modes are available: WPA-PSK and WPA-RADIUS. WPA-PSK gives you a choice of two encryption methods: TKIP (Temporal Key Integrity Protocol), which utilizes a stronger encryption method and incorporates Message Integrity Code (MIC) to provide protection against hackers, and AES (Advanced Encryption Standard), which utilizes a symmetric 128-Bit block data encryption. WPA-RADIUS offers two encryption methods, TKIP and AES, with dynamic encryption keys, and it uses a RADIUS (Remote Authentication Dial-In User Service) server for authentication.

WPA-PSK. If you do not have a RADIUS server, select the type of algorithm you want to use, **TKIP** or **AES**, and enter a password in the *Passphrase* field of 8-63 characters.



Important: Always remember that each device in your wireless network **MUST** use the same encryption method and encryption key or your wireless network will not function properly.

Wireless-G Portable USB Adapter

WPA-RADIUS. WPA used in coordination with a RADIUS server. (This should only be used when a RADIUS server is connected to the Router or other device.) WPA-RADIUS offers two encryption methods, TKIP and AES, with dynamic encryption keys.

Implementing encryption may have a negative impact on your network's performance, but if you are transmitting sensitive data over your network, encryption should be used.

These security recommendations should help keep your mind at ease while you are enjoying the most flexible and convenient technology Linksys has to offer.

Appendix C: Windows Help

All wireless products require Microsoft Windows. Windows is the most used operating system in the world and comes with many features that help make networking easier. These features can be accessed through Windows Help and are described in this appendix.

TCP/IP

Before a computer can communicate with the Access Point, TCP/IP must be enabled. TCP/IP is a set of instructions, or protocol, all PCs follow to communicate over a network. This is true for wireless networks as well. Your PCs will not be able to utilize wireless networking without having TCP/IP enabled. Windows Help provides complete instructions on enabling TCP/IP.

Shared Resources

If you wish to share printers, folder, or files over your network, Windows Help provides complete instructions on utilizing shared resources.

Network Neighborhood/My Network Places

Other PCs on your network will appear under Network Neighborhood or My Network Places (depending upon the version of Windows you're running). Windows Help provides complete instructions on adding PCs to your network.

Appendix D: Glossary

802.11b - An IEEE wireless networking standard that specifies a maximum data transfer rate of 11Mbps and an operating frequency of 2.4GHz.

802.11g - An IEEE wireless networking standard that specifies a maximum data transfer rate of 54Mbps, an operating frequency of 2.4GHz, and backward compatibility with 802.11b devices.

Access Point - Device that allows wireless-equipped computers and other devices to communicate with a wired network. Also used to expand the range of a wireless network.

Adapter - A device that adds network functionality to your PC.

Ad-hoc - A group of wireless devices communicating directly with each other (peer-to-peer) without the use of an access point.

Backbone - The part of a network that connects most of the systems and networks together, and handles the most data.

Bandwidth - The transmission capacity of a given device or network.

Bit - A binary digit.

CSMA/CA (Carrier Sense Multiple Access/Collision Avoidance) - A method of data transfer that is used to prevent data loss in a network.

CTS (Clear To Send) - A signal sent by a device to indicate that it is ready to receive data.

Default Gateway - A device that forwards Internet traffic from your local area network.

DHCP (Dynamic Host Configuration Protocol) - A protocol that lets one device on a local network, known as a DHCP server, assign temporary IP addresses to the other network devices, typically computers.

DNS (Domain Name Server) - The IP address of your ISP's server, which translates the names of websites into IP addresses.

DSSS (Direct-Sequence Spread-Spectrum) - A type of radio transmission technology that includes a redundant bit pattern to lessen the probability of data lost during transmission. Used in 802.11b networking.

Encryption - Encoding data to prevent it from being read by unauthorized people.

Ethernet - An IEEE standard network protocol that specifies how data is placed on and retrieved from a common transmission medium.

Firmware - 1. In network devices, the programming that runs the device. 2. Programming loaded into read-only memory (ROM) or programmable read-only memory (PROM) that cannot be altered by end-users.

Fragmentation - Breaking a packet into smaller units when transmitting over a network medium that cannot support the original size of the packet.

Gateway - A system that interconnects networks.

Hardware - The physical aspect of computers, telecommunications, and other information technology devices.

IEEE (The Institute of Electrical and Electronics Engineers) - An independent institute that develops networking standards.

Infrastructure Mode - Configuration in which a wireless network is bridged to a wired network via an access point.

IP (Internet Protocol) - A protocol used to send data over a network.

IP Address - The address used to identify a computer or device on a network.

ISM band - Radio band used in wireless networking transmissions.

ISP (Internet Service Provider) - A company that provides access to the Internet.

LAN (Local Area Network) - The computers and networking products that make up the network in your home or office.

MAC (Media Access Control) Address - The unique address that a manufacturer assigns to each networking device.

Mbps (Megabits Per Second) - One million bits per second; a unit of measurement for data transmission.

Network - A series of computers or devices connected for the purpose of data sharing, storage, and/or transmission between users.

Node - A network junction or connection point, typically a computer or work station.

Wireless-G Portable USB Adapter

OFDM (Orthogonal Frequency Division Multiplexing) - A type of modulation technology that separates the data stream into a number of lower-speed data streams, which are then transmitted in parallel. Used in 802.11a, 802.11g, and powerline networking.

Packet - A unit of data sent over a network.

Passphrase - Used much like a password, a passphrase simplifies the WEP encryption process by automatically generating the WEP encryption keys for Linksys products.

Port - The connection point on a computer or networking device used for plugging in a cable or an adapter.

Roaming - The ability to take a wireless device from one access point's range to another without losing the connection.

Router - A networking device that connects multiple networks together, such as a local network and the Internet.

RTS (Request To Send) - A packet sent when a computer has data to transmit. The computer will wait for a CTS (Clear To Send) message before sending data.

Server - Any computer whose function in a network is to provide user access to files, printing, communications, and other services.

Software - Instructions for the computer. A series of instructions that performs a particular task is called a "program".

Spread Spectrum - Wideband radio frequency technique used for more reliable and secure data transmission.

SSID (Service Set Identifier) - Your wireless network's name.

Subnet Mask - An address code that determines the size of the network.

Switch - Device that is the central point of connection for computers and other devices in a network, so data can be shared at full transmission speeds.

TCP/IP (Transmission Control Protocol/Internet Protocol) - A network protocol for transmitting data that requires acknowledgement from the recipient of data sent.

WEP (Wired Equivalent Privacy) - A method of encrypting data transmitted on a wireless network for greater security.

WLAN (Wireless Local Area Network) - A wireless network.

Appendix E: Specifications

Model	WUSB54GP ver.4
Standards	IEEE 802.11b, IEEE 802.11g, USB 1.1, and USB 2.0
Cabling Type	USB extension base with integrated USB Cable
LEDs	Link (Blue- Blinking when 802.11g RF signal is active)
Frequency Band	2.400~2.4835GHz (Subject to local regulation)
Peak Gain of Antenna	2.4 GHz => 2dBi
Transmit Power	16dBm (Typical)@11Mbps DSSS, 14 dBm (Typical)@54Mbps OFDM
Receive Sensitivity	802.11g: 11Mbps @ -83dBm, 54Mbps @-67dBm
Data Rate	11,5.5,2, 1Mbs auto-selection on 802.11b 54,48,36,24,18,12,9,6 Mbps auto-selection on 802.11g
Channels	11 Channels (US and Canada), 14 Channels (Japan), 13 Channels (Europe)
OS Support	Windows ® 2000 and XP
Security features	WEP Encryption 64-bit and 128-bit
Warranty	3 Year

Wireless-G Portable USB Adapter

Dimensions	1.25" x 4.50" x 0.38"
W x H x D	31.8 mm x 114.3 mm x 9.5 mm)
Unit Weight	4.5 oz. (0.13 kg)
USB Base	2.5 inches Diameter, approx. 6 foot cable
Certifications	FCC, CE
Operating Temp.	0°C ~ 65°C (32°F ~ 150°F)
Storage Temp.	-40°C ~ 85°C (-40°F ~ 185°F)
Operating Humidity	10% ~ 85% Non-Condensing
Storage Humidity	5% ~ 90% Non-Condensing

Appendix F: Warranty Information

LIMITED WARRANTY

Linksys warrants to the original end user purchaser ("You") that, for a period of [], (the "Warranty Period") Your Linksys product will be free of defects in materials and workmanship under normal use. Your exclusive remedy and Linksys's entire liability under this warranty will be for Linksys at its option to repair or replace the product or refund Your purchase price less any rebates.

If the product proves defective during the Warranty Period call Linksys Technical Support in order to obtain a Return Authorization Number. BE SURE TO HAVE YOUR PROOF OF PURCHASE ON HAND WHEN CALLING. When returning a product, mark the Return Authorization Number clearly on the outside of the package and include a copy of your original proof of purchase. RETURN REQUESTS CANNOT BE PROCESSED WITHOUT PROOF OF PURCHASE. You are responsible for shipping defective products to Linksys. Linksys pays for UPS Ground shipping from Linksys back to You only. Customers located outside of the United States of America and Canada are responsible for all shipping and handling charges.

ALL IMPLIED WARRANTIES AND CONDITIONS OF MERCHANTABILITY OR FITNESS FOR A PARTICULAR PURPOSE ARE LIMITED TO THE DURATION OF THE WARRANTY PERIOD. ALL OTHER EXPRESS OR IMPLIED CONDITIONS, REPRESENTATIONS AND WARRANTIES, INCLUDING ANY IMPLIED WARRANTY OF NON-INFRINGEMENT, ARE DISCLAIMED. Some jurisdictions do not allow limitations on how long an implied warranty lasts, so the above limitation may not apply to You. This warranty gives You specific legal rights, and You may also have other rights which vary by jurisdiction.

TO THE EXTENT NOT PROHIBITED BY LAW, IN NO EVENT WILL LINKSYS BE LIABLE FOR ANY LOST DATA, REVENUE OR PROFIT, OR FOR SPECIAL, INDIRECT, CONSEQUENTIAL, INCIDENTAL OR PUNITIVE DAMAGES, HOWEVER CAUSED REGARDLESS OF THE THEORY OF LIABILITY, ARISING OUT OF OR RELATED TO THE USE OF OR INABILITY TO USE THE PRODUCT, EVEN IF LINKSYS HAS BEEN ADVISED OF THE POSSIBILITY OF SUCH DAMAGES. IN NO EVENT WILL LINKSYS' LIABILITY EXCEED THE AMOUNT PAID BY YOU FOR THE PRODUCT.

The foregoing limitations will apply even if any warranty or remedy provided under this Section fails of its essential purpose. Some jurisdictions do not allow the exclusion or limitation of incidental or consequential damages, so the above limitation or exclusion may not apply to You.

Please direct all inquiries to: Linksys, P.O. Box 18558, Irvine, CA 92623 USA.

Appendix G: Regulatory Information

FCC STATEMENT

This (Series and Product name) has been tested and complies with the specifications for a Class B digital device, pursuant to Part 15 of the FCC Rules. These limits are designed to provide reasonable protection against harmful interference in a residential installation. This equipment generates, uses, and can radiate radio frequency energy and, if not installed and used according to the instructions, may cause harmful interference to radio communications. However, there is no guarantee that interference will not occur in a particular installation. If this equipment does cause harmful interference to radio or television reception, which is found by turning the equipment off and on, the user is encouraged to try to correct the interference by one or more of the following measures:

- Reorient or relocate the receiving antenna
- Increase the separation between the equipment or device
- Connect the equipment to an outlet other than the receiver's
- Consult a dealer or an experienced radio/TV technician for assistance

FCC Caution: Any changes or modifications not expressly approved by the party responsible for compliance could void the user's authority to operate this equipment.

This device complies with Part 15 of the FCC Rules. Operation is subject to the following two conditions: (1) The device may not cause harmful interference, and (2) this device must accept any interference received, including interference that may cause undesired operation.

Canada (IC) :

To prevent radio interference to the licensed service, this device is intended to be operated indoors and away from windows to provide maximum shielding. Equipment (or its transmit antenna) that is installed outdoors is subject to licensing.

This device was tested for typical bystander conditions that may occur during use. To comply with FCC RF exposure requirements, a minimum separation distance of 1.5 cm must be maintained between the user's body and the device, including the antenna.



Important: Cisco-Linksys, LLC declares that WUSB54GP ver.4 (FCC ID: Q87-WU54GPV4) is limited in CH1~CH11 for 2.4 GHz by specified firmware controlled in U.S.A.



Important:
FCC Radiation Exposure Statement:
This equipment complies with FCC radiation exposure limits set forth for an uncontrolled environment. This device complies with FCC RF Exposure limits set forth for an uncontrolled environments, under 47 CFR 2.1093 paragraph (d)(2). This transmitter must not be co-located or operating in conjunction with any other antenna or transmitter.

Appendix H: Contact Information

Need to contact Linksys?

Visit us online for information on the latest products and updates to your existing products at:

<http://www.linksys.com> or
[ftp.linksys.com](ftp://ftp.linksys.com)

Can't find information about a product you want to buy on the web? Do you want to know more about networking with Linksys products? Give our advice line a call at:
Or fax your request in to:

800-546-5797 (LINKSYS)
949-261-8868

If you experience problems with any Linksys product, you can call us at:
Don't wish to call? You can e-mail us at:

800-326-7114
support@linksys.com

If any Linksys product proves defective during its warranty period, you can call the Linksys Return Merchandise Authorization department for obtaining a Return Authorization Number at:
(Details on Warranty and RMA issues can be found in the Warranty Information section in this Guide.)

949-261-1288