

1. Attach the separate adhesive strip of velcro to the wall where you will be mounting the Adapter.

2. To attach the Wall Mount to the Adapter, slide the Wall Mount into the grooves on the back panel of the Adapter, as shown in Steps A, B, and C.



Figure 5-6

STEP A



Figure 5-7

STEP B



Figure 5-8

STEP C



Figure 5-9

3. Using the velcro strip on the Adapter's Wall Mount, attach the Adapter to the velcro strip on your wall.

If your PC is running Windows XP, proceed to "Chapter 6: Driver Installation and Configuration for Windows XP."

If your PC is running Windows 98SE, Me, or 2000, the installation of the Wireless-B USB Network Adapter is complete. If you want to check the link information, search for available wireless networks, or make additional configuration changes, proceed to "Chapter 7: Using the WLAN Monitor for Windows 98SE, Me, and 2000."

Chapter 6: Driver Installation and Configuration for Windows XP

Overview

After connecting the Adapter to your computer, you will install the driver and configure the Adapter.



Important for Windows XP users: Do NOT run the Wireless USB Network Adapter Setup Wizard. If the Setup Wizard runs automatically after the Setup CD-ROM has been inserted, click the **Exit** button.

Driver Installation for Windows XP

1. Windows XP will automatically detect the Adapter. Insert the Setup CD-ROM into your CD-ROM drive. Click the radio button next to **Install the software automatically (Recommended)**. Then click the **Next** button.



Figure 6-1

2. When Windows has finished installing the driver, click the **Finish** button.

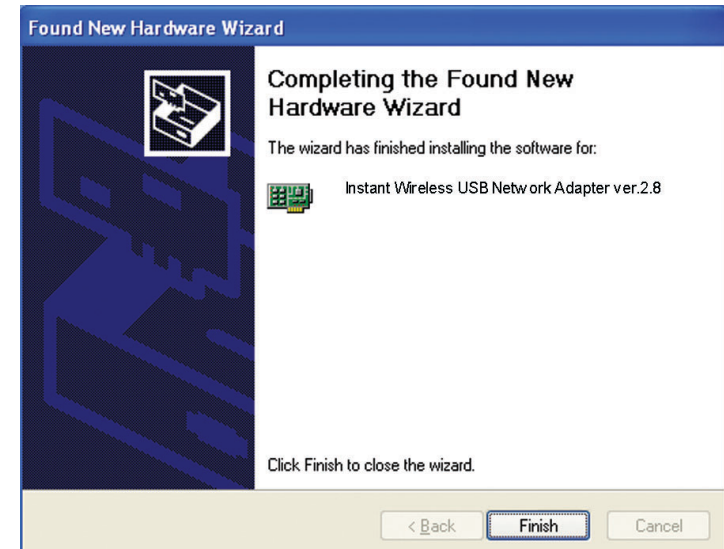


Figure 6-2

You have now completed the driver installation for the Wireless-B USB Network Adapter. To configure the Adapter, proceed to the next section, “Windows XP Wireless Zero Configuration.”

Windows XP Wireless Zero Configuration



Note for Windows XP users: Windows XP has a built-in configuration tool. Use Windows XP Wireless Zero Configuration (in the system tray at the bottom of your screen) to configure the Adapter.

1. After installing the Adapter, the Windows XP Wireless Zero Configuration icon will appear in your computer's system tray (see Figure 6-3). Double-click the icon.



Figure 6-3



Note: Steps 2 and 3 are the instructions and screenshots for Windows XP with Service Pack 1 installed.

If you have not installed Service Pack 1, select the network you want, and click the **Connect** button. If the network has WEP encryption enabled, enter the WEP key in the *Network key* field, and then click the **Connect** button.

2. The screen that appears will show any available wireless network. Select the network you want.

If this network has WEP encryption enabled, go to step 3.

If this network does not have WEP encryption enabled, then Figure 6-4 will appear. Make sure the box next to *Allow me to connect to the selected wireless network, even though it is not secure* is checked. Then click the **Connect** button, and go to step 4.

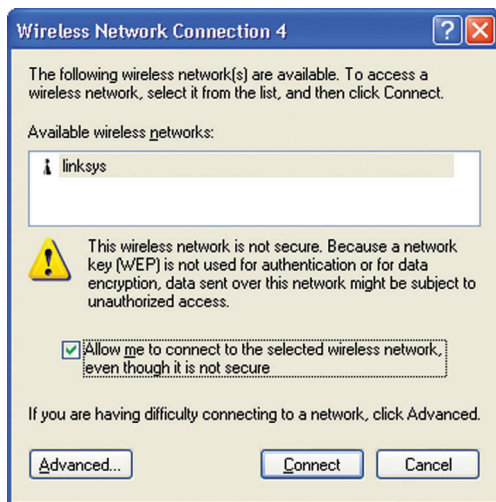


Figure 6-4

3. If WEP is enabled, the screen in Figure 6-5 will appear. Enter the WEP key of your wireless network in the *Network key* field, and re-enter it in the *Confirm network key* field. Then click the **Connect** button, and go to step 4.

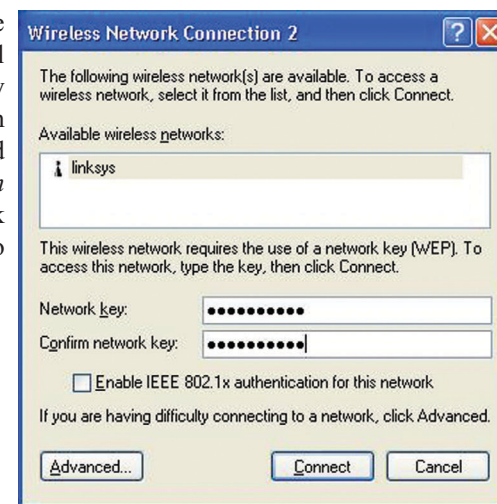


Figure 6-5



Note: Windows XP Wireless Zero Configuration does not support the use of a passphrase. Enter the exact WEP key used by your access point.

4. The screen in Figure 6-6 will appear if your connection is active.



Figure 6-6

For more information about wireless networking on a Windows XP computer, click **Start** and then **Help and Support**. Enter the keyword **wireless** in the field provided, and press the **Enter** key.

Congratulations! The installation of the Wireless-B USB Network Adapter is complete.

Chapter 7: Using the WLAN Monitor for Windows 98SE, Me, and 2000

Overview

Use the WLAN Monitor to check the link information, search for available wireless networks, or create profiles that hold different configuration settings.



Important for Windows XP users: Windows XP has a built-in configuration tool. Use the Windows XP Wireless Zero Configuration (in the system tray at the bottom of your screen) to configure the Adapter. See “Chapter 6: Driver Installation and Configuration for Windows XP.”

Accessing the WLAN Monitor

After installing the Adapter, the Wireless-B USB Network Adapter WLAN Monitor icon will appear in your system tray. Double-click the icon (see Figure 7-1).



Figure 7-1

The *Link Information* screen will appear. From this screen, you can find out how strong the current wireless signal is and how good the connection's quality is. You can also click the **More Information** button to view additional status information about the current wireless connection. To search for available wireless networks, click the **Site Survey** tab. To perform configuration changes, click the **Profiles** tab.

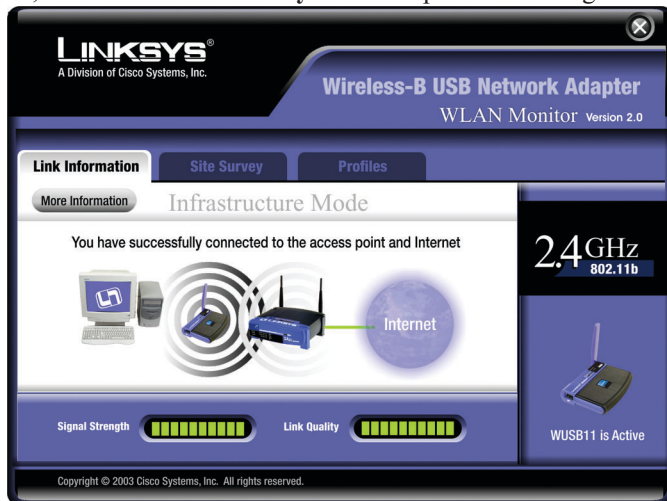


Figure 7-2

Link Information

The *Link Information* screen displays network mode, signal strength, and link quality information about the current connection. It also provides a button to click for additional status information.

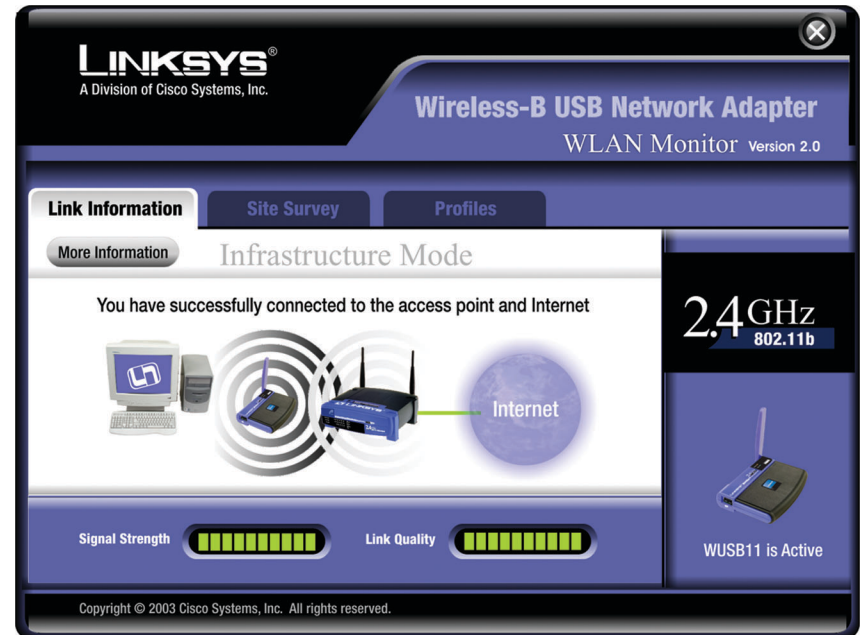


Figure 7-3

Ad-Hoc Mode or Infrastructure Mode - The screen indicates whether the Adapter is currently working in ad-hoc or infrastructure mode.

Signal Strength - The Signal Strength bar indicates signal strength, from 0 to 100%.

Link Quality - The Link Quality bar indicates the quality of the wireless network connection, from 0 to 100%.

Click the **More Information** button to view additional information about the wireless network connection.

Click the **X (Close)** button in the upper right corner to exit the WLAN Monitor.

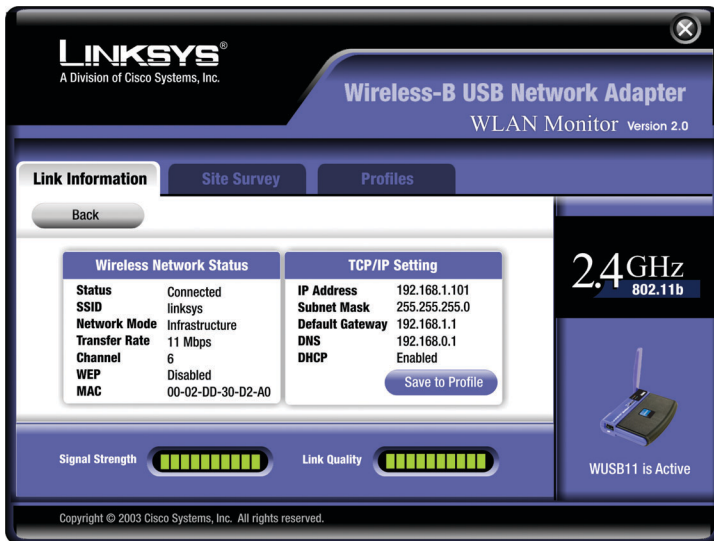


Figure 7-4

Wireless Network Status

Status - The status of the wireless network connection.

SSID - The SSID of the wireless network.

Network Mode - The wireless mode currently in use.

Transfer Rate - The data transfer rate of the current connection.

Channel - The channel to which the wireless network devices are set.

WEP - The status of the WEP encryption security feature.

MAC - The MAC address of the wireless network's access point.

TCP/IP Setting

IP Address - The IP Address of the Adapter.

Subnet Mask - The Subnet Mask of the Adapter.

Default Gateway - The Default Gateway address of the Adapter.

DNS - The DNS address of the Adapter.

DHCP - The status of the DHCP client.

Save to Profile - Click the **Save to Profile** button to save the current settings in a configuration profile. Then the *Create connection profile* screen will appear. Enter a name for the new profile, and click the **OK** button.

Click the **Back** button to return to the initial *Link Information* screen.

Click the **X** (Close) button in the upper right corner to exit the WLAN Monitor.

Site Survey

The *Site Survey* screen displays a list of infrastructure and ad-hoc networks available for connection.

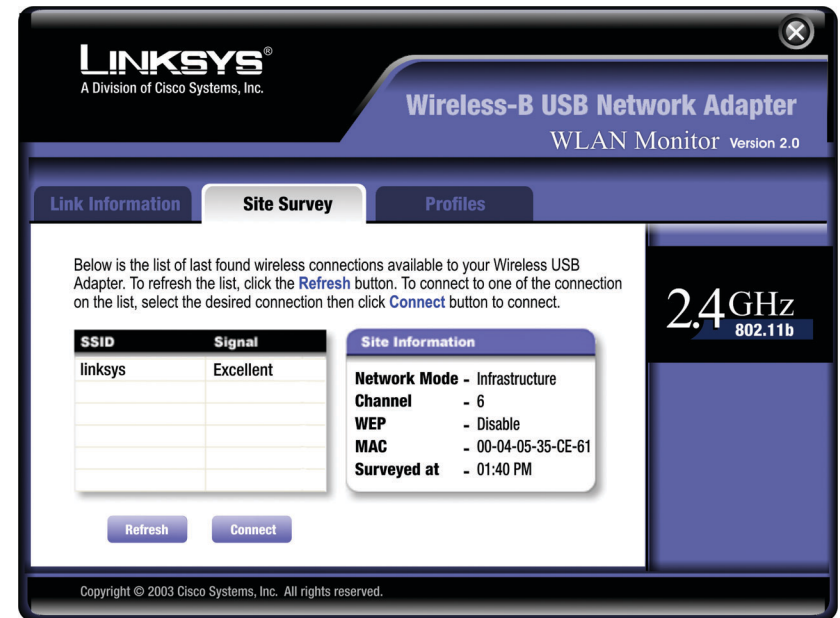


Figure 7-5

For all networks detected, the following are listed:

SSID - The SSID, unique name, of the wireless network.

Signal - The qualitative strength of the wireless signal.

Site Information

For each network selected, the following settings are listed:

Network Mode - The wireless mode currently in use.

Channel - The channel to which the wireless network devices are set.

WEP - The status of the WEP encryption security feature.

MAC - The MAC address of the wireless network's access point.

Surveyed at - The time at which the wireless network was scanned.

Refresh - Click the **Refresh** button to perform a new search for wireless devices.