

LINKSYS®

A Division of Cisco Systems, Inc.



2.4GHz
802.11b **Wireless-B**

USB Network Adapter **User Guide**

WIRELESS

Model No. **WUSB11**

CISCO SYSTEMS



Copyright and Trademarks

Specifications are subject to change without notice. Linksys is a registered trademark or trademark of Cisco Systems, Inc. and/or its affiliates in the U.S. and certain other countries. Copyright © 2003 Cisco Systems, Inc. All rights reserved. Other brands and product names are trademarks or registered trademarks of their respective holders.

This User Guide

The User Guide to the Wireless-B USB Network Adapter has been designed to make understanding networking easier than ever. Look for the following items when reading this guide:



This checkmark means there is a Note of interest and is something you should pay special attention to while using the USB Network Adapter.



This exclamation point means there is a Caution or warning and is something that could damage your property or the USB Network Adapter.



This question mark provides you with a reminder about something you might need to do while using the USB

In addition to these symbols, there are definitions for technical terms that are presented like this:

word: definition.

Also, each figure (diagram, screenshot, or other image) is provided with a figure number and description, like this:

Figure 0-1: Sample Figure Description

Figure numbers and descriptions can also be found in the "List of Figures" section in the "Table of Contents".

Table of Contents

Chapter 1: Introduction	1
Welcome	1
What's in this Guide?	2
Chapter 2: Planning your Wireless Network	4
Network Topology	4
Roaming	4
Network Layout	5
Chapter 3: Getting to Know the USB Network Adapter	6
The USB Port	6
The LED Indicators	6
Chapter 4: Software Installation and Configuration for Windows 98SE, Me, and 2000	7
The Installation Procedure	8
Chapter 5: Hardware Installation	11
Connecting the Adapter	11
Using the Adapter's Wall Mount	13
Chapter 6: Driver Installation and Configuration for Windows XP	15
Windows XP Wireless Zero Configuration	16
Chapter 7: Using the WLAN Monitor for Windows 98SE, Me, and 2000	18
Accessing the WLAN Monitor	18
Link Information	18
Site Survey	20
Profiles	21
Creating a New Profile	23
Appendix A: Troubleshooting	27
Common Problems and Solutions	27
Frequently Asked Questions	28
Appendix B: Wireless Security	31
Security Precautions	31
Security Threats Facing Wireless Networks	31
Appendix C: Windows Help	34
Appendix D: Glossary	35

Appendix E: Specifications	38
Appendix F: Warranty Information	40
Appendix G: Regulatory Information	41
Appendix H: Contact Information	44

List of Figures

Figure 3-1: Back Panel	6
Figure 3-2: Front Panel	6
Figure 4-1: The Setup Wizard's Welcome screen	7
Figure 4-2: The Setup Wizard's License Agreement	8
Figure 4-3: The Setup Wizard's Network Mode screen	8
Figure 4-4: The Setup Wizard's Wireless Channels screen	9
Figure 4-5: The Setup Wizard's Finalize Settings screen	9
Figure 4-6: The Setup Wizard's Congratulations Screen	10
Figure 5-1: How the Adapter connects to your PC	11
Figure 5-2: The Adapter's USB Port	11
Figure 5-3: A PC's USB port	11
Figure 5-4: The Adapter's LEDs	12
Figure 5-5: Positioning the LEDs antenna	12
Figure 5-6: The Adapter's Wall Mount	13
Figure 5-7: Using the Wall Mount - Step A	13
Figure 5-8: Using the Wall Mount - Step B	14
Figure 5-9: Using the Wall Mount - Step C	14
Figure 6-1: Install Software Automatically	15
Figure 6-2: wizard Finished	15
Figure 6-3: The Zero Configuration Icon	16
Figure 6-4: Zero Configuration Connection without WEP	16
Figure 6-5: Zero Configuration Connection with WEP	17
Figure 6-6: Zero Configuration Active Wireless Connection	17
Figure 7-1: The WLAN Monitor icon	18
Figure 7-2: The Link Information screen	18
Figure 7-3: More Link Information	19
Figure 7-4: Site Survey	20
Figure 7-5: WEP Encryption	20
Figure 7-6: Profiles	21
Figure 7-7: Importing a Profile	22

Figure 7-8: Exporting a Profile	22
Figure 7-9: Creating a New Profile	23
Figure 7-10: Enter Profile Name	23
Figure 7-11: Network Settings for New Profile	24
Figure 7-12: Network Mode for New Profile	24
Figure 7-13: Wireless Channels for New Profile	25
Figure 7-14: Security Settings for New Profile	25
Figure 7-15: Confirm New Settings for New Profile	26
Figure 7-16: Congratulations for New Profile	26

Chapter 1: Introduction

Welcome

Thank you for choosing the Wireless-B USB Network Adapter. With this Adapter, your wireless networking experience will be faster and easier than ever.

How does the Adapter do this? Like all wireless products, the Adapter allows for greater range and mobility within your wireless network. Connecting to your PC via the USB port means that this Adapter leaves the PC's slots open for other purposes. This adapter communicates over the 802.11b wireless standard, one of the most popular wireless standards, to communicate with your network.

But what does all of this mean?

Networks are useful tools for sharing computer resources. You can access one printer from different computers and access data located on another computer's hard drive. Networks are even used for playing multiplayer video games. So, networks are not only useful in homes and offices, they can also be fun.

PCs equipped with wireless cards and adapters can communicate without cumbersome cables. By sharing the same wireless settings, within their transmission radius, they form a wireless network.

Use the instructions in this Guide to help you connect the Access Point, set it up, and configure it to bridge your different networks. These instructions should be all you need to get the most out of the Access Point.

network: a series of computers or devices connected for the purpose of data sharing, storage, and/or transmission between users.

adapter: a device that adds network functionality to your PC.

802.11b: an IEEE wireless networking standard that specifies a maximum data transfer rate of 11Mbps and an operating frequency of 2.4GHz.

What's in this Guide?

This user guide covers the steps for setting up and using the Wireless-B USB Network Adapter.

- **Chapter 1: Introduction**
This chapter describes the Adapter's applications and this User Guide.
- **Chapter 2: Planning Your Wireless Network**
This chapter discusses a few of the basics about wireless networking.
- **Chapter 3: Getting to Know the Wireless-B USB Network Adapter**
This chapter describes the physical features of the Adapter.
- **Chapter 4: Software Installation and Configuration for Windows 98SE, Me, and 2000**
This chapter instructs you on how to install the Adapter's Setup Wizard and Configure the Adapter for Windows 98SE, Me, and 2000.
- **Chapter 5: Hardware Installation**
This chapter shows you how to connect the Adapter to your PC.
- **Chapter 6: Driver Installation and Configuration for Windows XP**
This chapter explains how to install the Adapter's driver and use Windows Zero Configuration.
- **Chapter 7: Using the WLAN Monitor for Windows 98SE, Me, and 2000**
This chapter show you how to use the Adapter's WLAN Monitor.
- **Appendix A: Troubleshooting**
This appendix describes some problems and solutions, as well as frequently asked questions, regarding installation and use of the Adapter.
- **Appendix B: Wireless Security**
This appendix discusses security issues regarding wireless networking and measures you can take to help protect your wireless network.
- **Appendix C: Windows Help**
This appendix describes how you can use Windows Help for instructions about networking, such as installing the TCP/IP protocol.
- **Appendix D: Glossary**
This appendix gives a brief glossary of terms frequently used in networking.

Wireless-B USB Network Adapter

- **Appendix E: Specifications**
This appendix provides the Adapter's technical specifications.
- **Appendix F: Warranty Information**
This appendix supplies the Adapter's warranty information.
- **Appendix G: Regulatory Information**
This appendix supplies the Adapter's regulatory information.
- **Appendix H: Contact Information**
This appendix provides contact information for a variety of Linksys resources, including Technical Support.

Chapter 2: Planning your Wireless Network

Network Topology

A wireless network is a group of computers, each equipped with one wireless adapter. Computers in a wireless network must be configured to share the same radio channel. Several PCs equipped with wireless cards or adapters can communicate with one another to form an ad-hoc network.

Linksys wireless adapters also provide users access to a wired network when using an access point or wireless router. An integrated wireless and wired network is called an infrastructure network. Each wireless PC in an infrastructure network can talk to any computer in a wired network infrastructure via the access point or wireless router.

An infrastructure configuration extends the accessibility of a wireless PC to a wired network, and can double the effective wireless transmission range for two wireless adapter PCs. Since an access point is able to forward data within a network, the effective transmission range in an infrastructure network can be doubled.

Roaming

Infrastructure mode also supports roaming capabilities for mobile users. Roaming means that you can move your wireless PC within your network and the access points will pick up the wireless PC's signal, providing that they both share the same channel and SSID.

Before enabling you consider roaming, choose a feasible radio channel and optimum access point position. Proper access point positioning combined with a clear radio signal will greatly enhance performance.

topology: the physical layout of a network.

ad-hoc: a group of wireless devices communicating directly with each other (peer-to-peer) without the use of an access point.

infrastructure: a wireless network that is bridged to a wired network via an access point.

roaming: the ability to take a wireless device from one access point's range to another without losing the connection.

ssid: your wireless network's name.

Network Layout

Linksys wireless access points and wireless routers have been designed for use with 802.11a, 802.11b, and 802.11g products. With 802.11g products communicating with the 802.11b standard and some products incorporating both “a” and “g”, products using these standards can communicate with each other.

Access points and wireless routers are compatible with 802.11a, 802.11b and 802.11g adapters, such as the PC Cards for your laptop computers, PCI Card for your desktop PC, and USB Adapters for when you want to enjoy USB connectivity. Wireless products will also communicate with the wireless PrintServer.

When you wish to connect your wired network with your wireless network, network ports on access points and wireless routers can be connected to any of Linksys's switches or routers.

With these, and many other, Linksys products, your networking options are limitless. Go to the Linksys website at www.linksys.com for more information about wireless products.

Chapter 3: Getting to Know the USB Network Adapter

The USB Port

The Adapter's USB port is located on the side of the Adapter. You will attach the included USB cable to this port. The other end of the cable will connect to your PC's USB port.



Figure 3-1: Back Panel

The LED Indicators

The Network Adapter's LEDs display information about network activity.



Figure 3-2: Front Panel

Power *Green.* The Power LED lights up when the Adapter is powered on.

Link *Green.* The Link LED lights up when the Adapter has an active connection.

Chapter 4: Software Installation and Configuration for Windows 98SE, Me, and 2000

The Wireless Wireless-B USB Network Adapter Setup Wizard will guide you through the installation procedure for Windows 98SE, Me, and 2000. The Setup Wizard will install the WLAN Monitor and driver, as well as configure the Adapter.



NOTE: Windows XP Users. Do **NOT** run the Wireless-B USB Network Adapter Setup Wizard. Proceed directly to “Chapter 5: Hardware Installation.”



NOTE: Windows 98SE, Me, and 2000 users. You must run the Setup Wizard to install the software before installing the hardware.

Insert the **Setup Wizard CD-ROM** into your CD-ROM drive. The Setup Wizard should run automatically, and the *Welcome* screen should appear. If it does not, click the **Start** button and choose **Run**. In the field that appears, enter **D:\setup.exe** (if “D” is the letter of your CD-ROM drive).

On the Welcome screen, you have the following choices:

Install - Click the **Install** button to begin the software installation process.

User Guide - Click the **User Guide** button to open the PDF file of this User Guide.

Exit - Click the **Exit** button to exit the Setup Wizard.

wlan: a group of computers and associated devices that communicate with each other wirelessly.



Figure 4-1: The Setup Wizard’s Welcome screen

software: instructions for the computer

The Installation Procedure

1. To install the Adapter, click the **Install** button on the Welcome screen.
2. After reading the License Agreement, click the **Next** button if you agree, or click the **Cancel** button to end the installation.

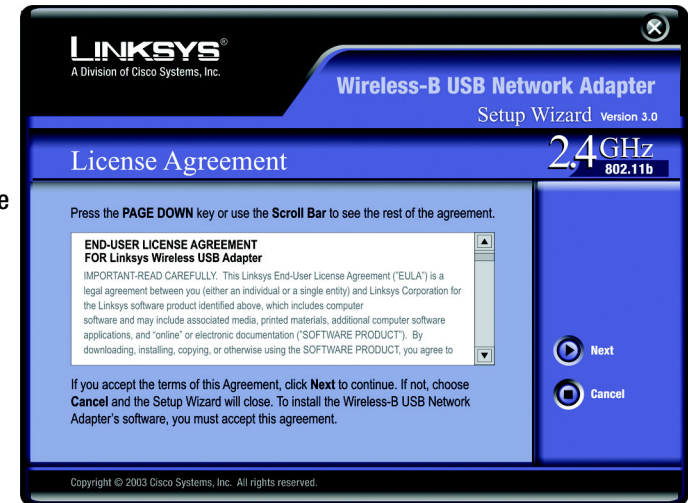


Figure 4-2: The Setup Wizard's License Agreement

3. The Setup Wizard will ask you to choose a network mode. Click the **Infrastructure Mode** radio button if you want your wireless computers to network with computers on your wired network using a wireless access point. Click the **Ad-Hoc Mode** radio button if you want multiple wireless computers to network directly with each other.

In the SSID field, enter the **SSID** of your wireless network. The SSID must be identical for all devices in the network. The default setting is **linksys** (all lowercase). Click the **Next** button.



NOTE: Network SSIDs should be unique to your network and identical for all devices within the network.

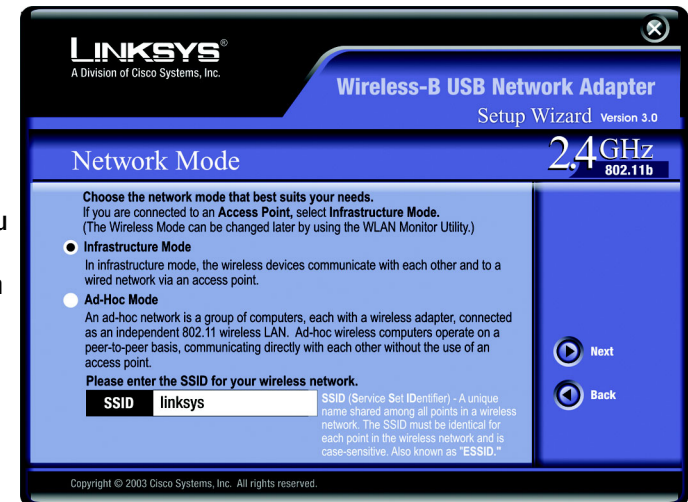


Figure 4-3: The Setup Wizard's Network Mode screen

Wireless-B USB Network Adapter

- If you chose **Infrastructure Mode**, go to Step 5 now. If you chose **Ad-Hoc Mode**, select the correct operating channel for your network. The channel you choose should match the channel set on the other devices in your wireless network. Then click the **Next** button.

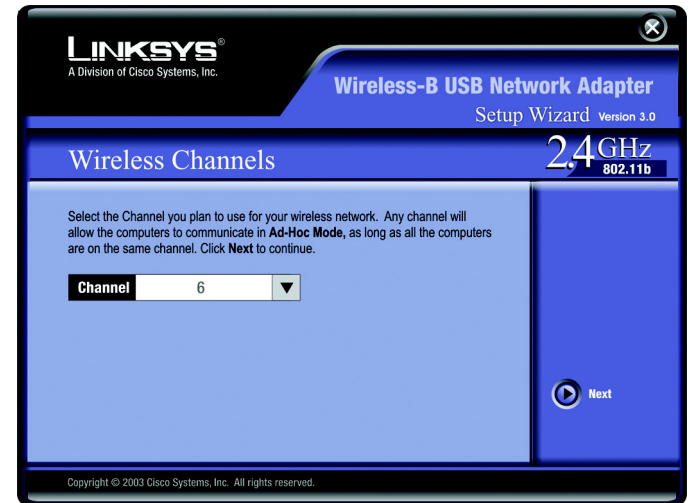


Figure 4-4: The Setup Wizard's Wireless Channels screen

- The Setup Wizard will ask you to review your settings before it starts to copy files. Click the **Next** button to save these settings, or click the **Back** button to change any settings.

If you're using Windows 2000, you may see a Windows Digital Signature warning. As this product has been tested to work with Windows, you may continue.

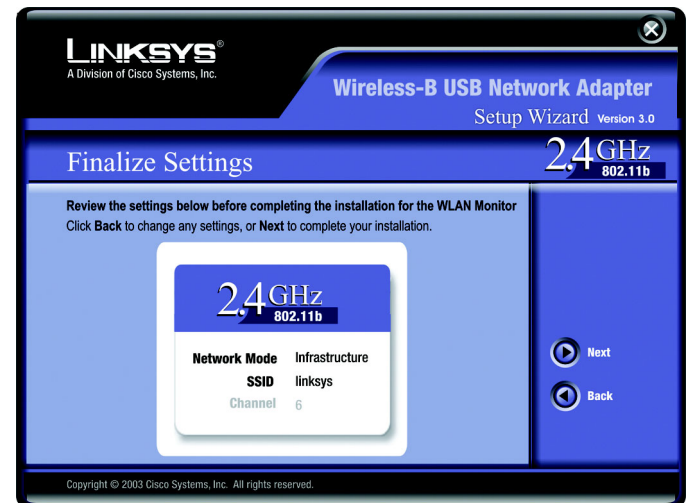


Figure 4-5: The Setup Wizard's Finalize Settings screen

Wireless-B USB Network Adapter

6. After the software has been successfully installed, the Congratulations screen will appear. Click the **Exit** button.

Proceed to “Chapter 5: Hardware Installation.”



Figure 4-6: The Setup Wizard's Congratulations Screen

Chapter 5: Hardware Installation



NOTE: Windows 98SE, Me, and 2000 users. You must run the Setup Wizard to install the software before installing the hardware.



NOTE: Windows XP Users. You must install the Adapter's hardware before installing the software.

Connecting the Adapter

1. The Adapter comes with the USB cable you will use to connect the Adapter to your PC.

Connect one end of the USB cable to the USB port of the Adapter.

Connect the other end of the USB cable to one of the USB ports on your computer.

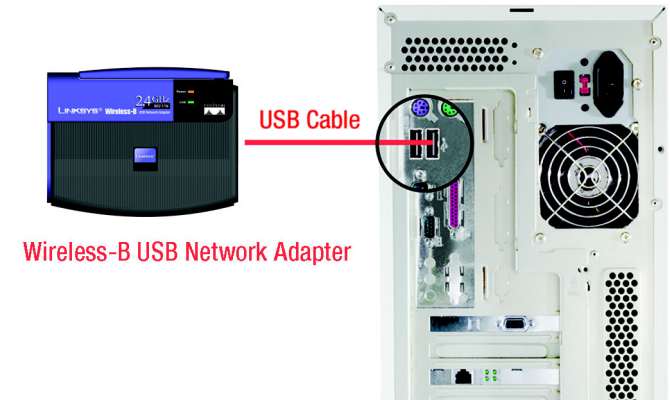


Figure 5-1: How the Adapter connects to your PC



Figure 5-2: The Adapter's USB Port

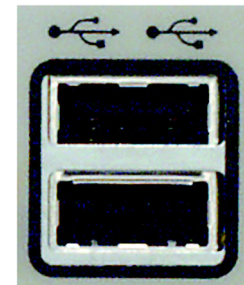


Figure 5-3: A PC's USB port

Wireless-B USB Notebook Adapter

2. The Power LED should light up when the Adapter is plugged in. (Make sure your PC is powered on.)



Figure 5-4: The Adapter's LEDs

Raise the antenna. Make sure the antenna is positioned straight up into the air, at a 90° angle from the Adapter. This will ensure optimum wireless operating range and performance.



NOTE: If you want to attach the Adapter onto your wall, go to the next section, "Using the Adapter's Wall Mount," before proceeding to the appropriate chapter for your PC's operating system.

If your PC is running Windows XP, proceed to "Chapter 6: Driver Installation and Configuration for Windows XP."

If your PC is running Windows 98SE, Me, or 2000, the installation of the Wireless-B USB Network Adapter is complete. If you want to check the link information, search for available wireless networks, or make additional configuration changes, proceed to "Chapter 7: Using the WLAN Monitor for Windows 98SE, Me, and 2000."



Figure 5-5: Positioning the LEDs antenna

Using the Adapter's Wall Mount

The Adapter's Wall Mount allows you to easily attach the Adapter onto your wall for better reception and more convenient placement.

1. Attach the separate adhesive strip of velcro to the wall where you will be mounting the Adapter.



Figure 5-6: The Adapter's Wall Mount

2. To attach the Wall Mount to the Adapter, slide the Wall Mount into the grooves on the back panel of the Adapter, as shown in Steps A, B, and C.



Figure 5-7: Using the Wall Mount - Step A



Figure 5-8: Using the Wall Mount - Step B

3. Using the velcro strip on the Adapter's Wall Mount, attach the Adapter to the velcro strip on your wall.

If your PC is running Windows XP, proceed to "Chapter 6: Driver Installation and Configuration for Windows XP."



Figure 5-9: Using the Wall Mount - Step C

If your PC is running Windows 98SE, Me, or 2000, the installation of the Wireless-B USB Network Adapter is complete. If you want to check the link information, search for available wireless networks, or make additional configuration changes, proceed to "Chapter 7: Using the WLAN Monitor for Windows 98SE, Me, and 2000."