

Wireless-G Internet Home Monitoring Camera



Model: **WVC54GCA**

About This Guide

Icon Descriptions

While reading through the User Guide you may see various icons that call attention to specific items. Below is a description of these icons:



NOTE: This check mark indicates that there is a note of interest and is something that you should pay special attention to while using the product.



WARNING: This exclamation point indicates that there is a caution or warning and it is something that could damage your property or product.



WEB: This globe icon indicates a noteworthy website address or e-mail address.

Online Resources

Website addresses in this document are listed without **http://** in front of the address because most current web browsers do not require it. If you use an older web browser, you may have to add **http://** in front of the web address.

Resource	Website
Linksys	www.linksys.com
Linksys International	www.linksys.com/international
Glossary	www.linksys.com/glossary
Network Security	www.linksys.com/security

Copyright and Trademarks

Specifications are subject to change without notice. Linksys is a registered trademark or trademark of Cisco Systems, Inc. and/or its affiliates in the U.S. and certain other countries. Copyright © 2007 Cisco Systems, Inc. All rights reserved. Other brands and product names are trademarks or registered trademarks of their respective holders.

Chapter 1: Product Overview	4
Front Panel	4
Back Panel	4
Bottom Panel	4
Chapter 2: Setting up and Mounting the Camera	5
Setup Wizard	5
Placement Options	9
Chapter 2: Installing and Using the Camera Utility	11
Overview	11
Installing the Camera Utility	11
Using the Camera Utility	13
Main Screen	13
Chapter 4: Advanced Configuration with the Web-based Utility	20
Overview	20
How to Access the Web-based Utility	20
View Video	20
Setup > Basic	21
Setup > Image	22
Setup > Maintenance	23
Setup > Users	23
Setup > DDNS	24
Setup > FTP Upload	25
Setup > Options	26
Setup > Pan/Tilt	27
Setup > Status	27
Help	28
Appendix A: Troubleshooting	29
Common Problems and Solutions	29
Frequently Asked Questions	30
Appendix B: Wireless Security Checklist	32
General Network Security Guidelines	32
Additional Security Tips	32
Appendix C: Specifications	33
Appendix D: Warranty Information	34
Appendix E: Regulatory Information	35
FCC Statement	35
FCC Radiation Exposure Statement	35
Safety Notices	35



Industry Canada Statement35
Avis d'Industrie Canada.36
Wireless Disclaimer36
Avis de non-responsabilité concernant les appareils sans fil36
User Information for Consumer Products Covered by EU Directive 2002/96/EC on Waste Electric and Electronic Equipment (WEEE)37

Chapter 1: Product Overview

Thank you for choosing the Linksys Wireless-G Internet Home Monitoring Camera. The Camera sends live video through the Internet to a web browser anywhere in the world! This compact, self-contained unit lets you keep an eye on your home, your kids, your workplace—whatever's important to you.



Front Panel



-  **Power** (Blue) This LED lights up when the Camera is powered on. It flashes while the Camera is booting up and remains lit when the Camera is ready for use.
-  **Microphone** The microphone is used to record the ambient sound.


Back Panel



-  **Power** The Power port is where you will connect the power adapter.
-  **Ethernet** The Ethernet port is where you connect the Ethernet network cable.

Bottom Panel



-  **Reset** This button is used to reset the Camera. Insert a paper clip into the opening. Then press the button and hold it in for five seconds.



WARNING: Resetting the Camera will erase all of your settings, such as encryption information, and replace them with the factory defaults. Do not reset the Camera if you want to retain your settings.



NOTE: The Camera's factory default settings are:
 default IP address: **192.168.1.100**
 user name: **admin**
 password: **admin**

Chapter 2: Setting up and Mounting the Camera

Setup Wizard

The Wireless-G Internet Home Monitoring Camera Setup Wizard will guide you through the installation and configuration procedure.

1. Insert the Setup CD-ROM into your CD-ROM drive. The Setup Wizard should run automatically, and the *Welcome* screen should appear. If not, click **Start**, select **Run**, and in the field provided, enter **D:\wvc54gca.exe** (if "D" is the letter of your CD-ROM drive).



Setup Wizard - Welcome Screen

Click **Click Here to Start** to continue.

2. The Setup Wizard displays the following options.
 - **Setup Camera** Click this to begin the installation process.
 - **Install Camera Utility** Click this to install the Camera Utility on your PC.
 - **User Guide** Click this to open the PDF file of this User Guide.
 - **Exit** Click this to exit the Setup Wizard.

To install the Camera, click **Setup Camera**.

3. On the *End User License Agreement* screen, check the box next to **I accept the agreement** and click **Next** if you agree and want to continue the installation, or click **Exit** to end the installation.



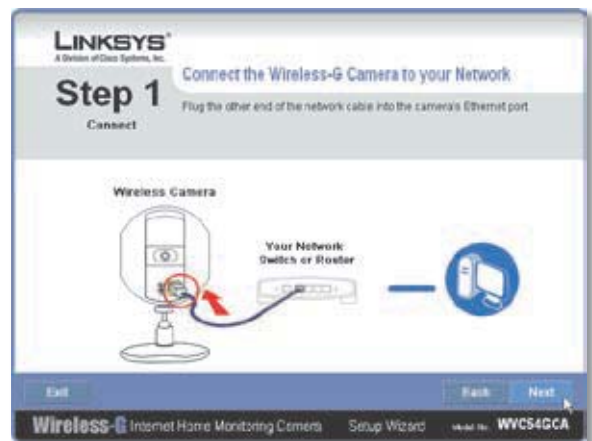
End User License Agreement

4. Connect the included network cable to your network router or switch. Click **Next**.



Connect Network Cable to the Switch or Router

5. Connect the other end of the network cable to the Camera's Ethernet port. Click **Next**.



Connect Network Cable to the Camera

- Plug the included power adapter into the Camera's Power port. Plug the other end into an electrical outlet. Click **Next**.



Power On the Camera

- Make sure the LED is lit on the Camera's front panel. If it is not lit, make sure the cables are properly connected to the Camera. Click **Next**.



Check the LED

- The Wizard searches for the Wireless-G Internet Home Monitoring Cameras on your network, then displays the Camera found along with status information.



Camera Found on Network

If the Camera you want is not displayed, click **Search Again** to run a new search for Cameras.

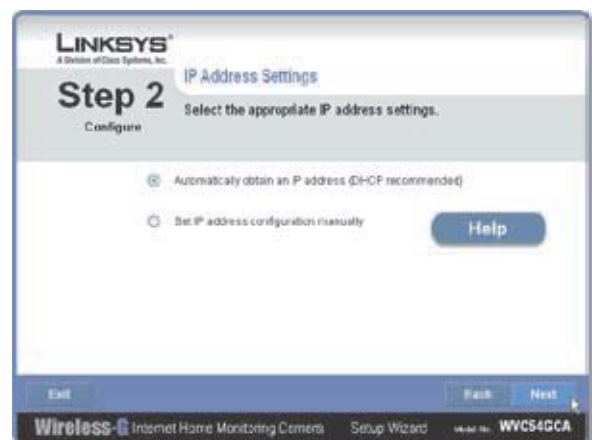
Otherwise, in the *Camera List* box, click the name of the Camera you are currently installing. Write down the IP address of the Camera, so you can use it to access the Web-based Utility later. Click **Next**.

- Enter a name for the Camera. Memorable names are helpful, especially if you are using multiple Cameras on the same network. It should have 15 characters or fewer. After you have entered the name, click **Next**.



Assign the Camera Name

- Select how to assign an IP Address to the Camera, either automatically or manually. Then click **Next**.



IP Address Settings

- Automatically obtain an IP Address** Select this option if you want to automatically assign an IP address to the Camera using DHCP.

If you are not sure which option to choose, Linksys recommends this option.

- Set IP address configuration manually** Select this option if you want to manually assign a static IP address to the Camera.

If you select this option, fill in the *IP Address*, *Subnet Mask*, and *Gateway* fields.



Enter the Static IP Address

- If you want to keep the Camera's default password (**admin**), leave the fields unchanged and click **Next**. If you want to change the password, enter the new password, re-enter to confirm, then click **Next**.



Enter the Camera Password

- The Wizard will search for wireless networks, then list the wireless networks found. If the wireless network you want to connect to is not listed, click **Refresh** to update the list. Select the wireless network that you want to connect the Camera to, then click **Next**.



Select Wireless Network

- The Wizard displays the wireless security method that your network is using: **WPA/WPA2-Personal**, **WEP (128-Bit)**, or **WEP (64-Bit)**. Follow the appropriate instructions below. If you are not using wireless security, select **Disabled** and go to step 14.

- WPA/WPA2-Personal** Enter a passphrase in the *Passphrase* field and click **Next**. The passphrase is case-sensitive and must be from 8 to 63 characters in length.



Security Settings - WPA/WPA2-Personal

- WEP (64-Bit) or WEP (128-Bit)** To generate the WEP key automatically, enter a passphrase in the *Passphrase* field and click **Next**. The passphrase is case-sensitive and should not be longer than 16 characters. It must match the passphrase of your other wireless network devices and is compatible with Linksys wireless products only. (If you have any non-Linksys wireless products, enter the WEP key manually on those products.)

To manually enter a WEP key, leave the *Passphrase* field blank, click **Next**, and enter the WEP key on the next screen. This WEP key must match the WEP key of your wireless network. For 64-bit WEP encryption, enter exactly 10 hexadecimal characters. For 128-bit WEP encryption, enter exactly 26 hexadecimal characters. Valid hexadecimal characters are "0" to "9" and "A" to "F". After you have entered the WEP key, click **Next**.



Security Settings - WEP (64-Bit) or WEP (128-Bit)

14. Review the Camera's settings. To make changes to the settings, click **Back** to go back to the previous screen. If the settings are correct, click **Save** to continue.



Save the Camera Settings

15. When the Wizard informs you that the new Camera settings have been saved, click **Continue**.
 16. Disconnect the power from the camera. Click **Next**.



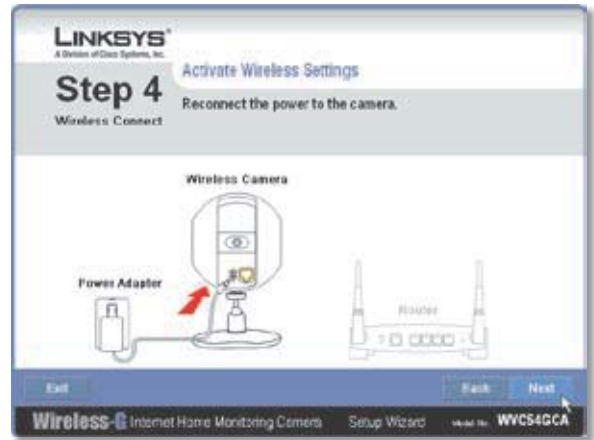
Disconnect the Power

17. Disconnect the network cable from the Camera and from your switch or router. Click **Next**.



Disconnect the Network Cable

18. Reconnect the power to the Camera. Click **Next**.



Reconnect the Power

19. When the Setup Wizard displays **Camera successfully connected to network**, click **Continue**, then click **Next**.



Reconnect the Power

20. The *Congratulations* screen appears.

- **Install Camera Utility** Click this to install the Camera's Utility.
- **Online Registration** Click this to register your Camera online.
- **Exit** Click this to install the Camera's utility later.

Go to the "Placement Options" section.

Placement Options

The Camera can stand on a surface or be mounted on a wall. Depending on the positioning you want, you attach the Camera head to its stand at two different points.

Stand Option

Follow these steps to stand the Camera on a surface.

1. Insert the screw end of the stand into the hole on the bottom panel.
2. Tighten the screw and then the thumbscrew.
3. Place the Camera, and adjust the tilt of its head accordingly, as described below in section “Camera Head Tilting” v.



Camera in Standing Position

Wall Mount Option

You use the Camera’s stand to mount the Camera on a wall. The stand has two wall-mount slots that are spaced 58 mm (2.28 inches) apart.

1. Insert the screw end of the stand into the hole on the back panel.
2. Tighten the screw end and then the thumbscrew.
3. Determine where you want to mount the Camera. Attach two screws to the wall, so that the Camera’s wall-mount slots line up with the two screws.
4. Maneuver the Camera so the screws are inserted into the two slots.

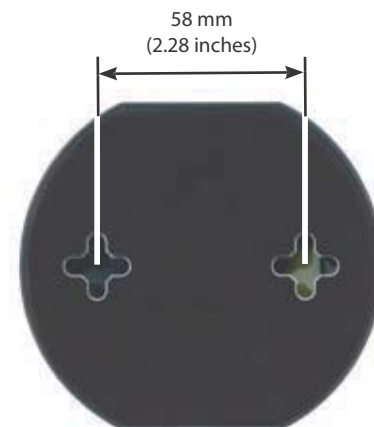
5. Adjust the tilt of its head accordingly, as described below in section “Camera Head Tilting”.



Wall Mount Option



Camera in Wall-Mounting Position



Wall-Mount Slots

Camera Head Tilting

After the Camera is assembled, you can tilt the Camera head on its ball joint using the lock nut on the camera stand. Loosen the lock nut, tilt the camera head as desired, then tighten the lock nut to secure the position.



Camera Tilting Feature with Stand Option

The installation of the Wireless-G Internet Home Monitoring Camera is complete. Go to “Chapter 3: Installing and Using the Camera Utility.”

For information about advanced configuration using the Camera’s Web-based Utility, go to “Chapter 4: Advanced Configuration with the Web-Based Utility.”

Chapter 2: Installing and Using the Camera Utility

Overview

This chapter will instruct you on how to install and use the Camera Utility on your PC. The Utility allows you to easily view and record the Camera's video.

If another Wireless-B or Wireless-G Internet Camera Utility is already installed on your PC, Linksys recommends that you uninstall it before installing this Camera Utility.



NOTE: To view video using a web browser, you must use Internet Explorer version 5.5 or higher. The View Video feature will not work with other web browsers. If you do not use Internet Explorer v5.5, use the Camera Utility instead.

Installing the Camera Utility

1. On the *Welcome* or *Congratulations* screen of the Setup Wizard, click **Install Camera Utility**.



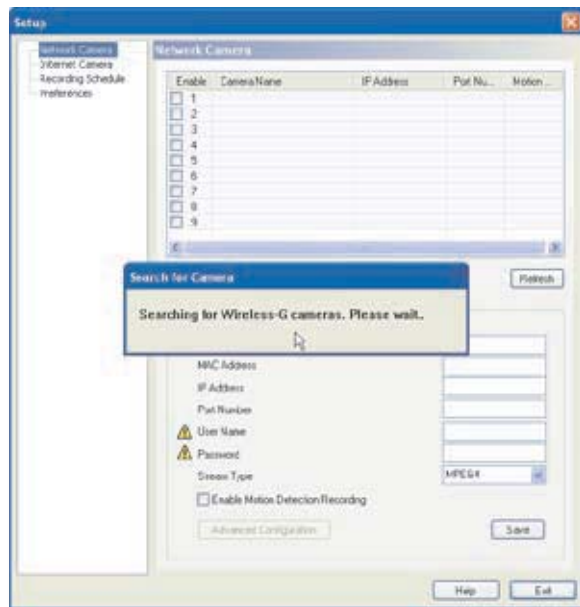
Install Viewer & Recorder Utility Screen

2. The Setup Wizard begins to install the Camera Utility. The progress of the installation is displayed.
3. When the Setup Wizard informs you that the installation is complete, click **Continue**. The Utility will automatically start up.



Camera Utility Installation Completed

2. The Camera Utility displays the *Setup* screen and searches for your Wireless-G Camera.



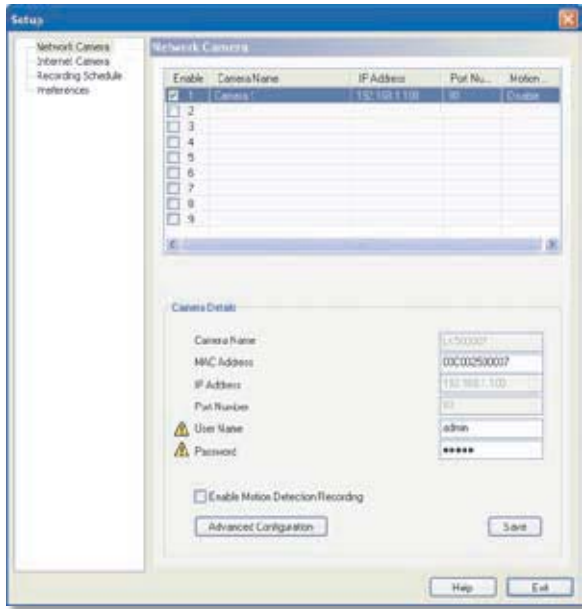
Setup Screen - Searching for Camera

3. Enter your User Name and Password:
 - **User Name** Enter **admin** in this field.
 - **Password** If you did NOT change the password in Step 11 of section "Setup Wizard" in "Chapter 2: Setting Up and Mounting the Camera," enter **admin** in this field. Otherwise, enter the new password.



Authorization Screen

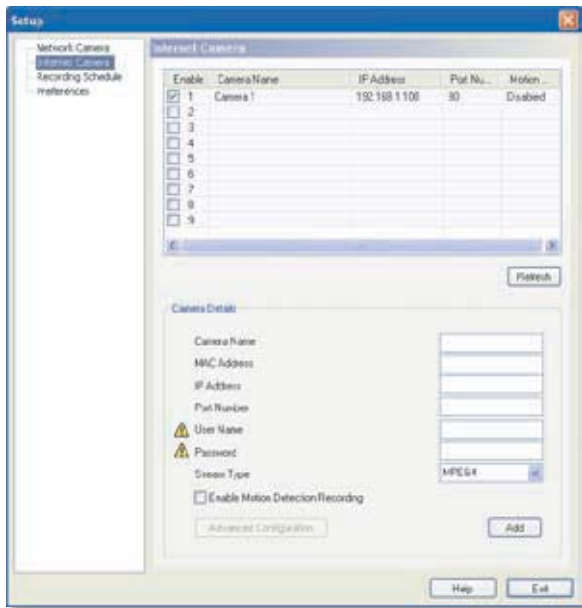
4. The *Setup > Network Camera* screen appears. This screen displays the following information on the Camera:
 - **Enable** This is checked if the Camera is enabled.
 - **Camera Name** Displays the name of the Camera.
 - **IP Address** Displays the Camera's IP address.
 - **Port Number** Displays the Camera's port number.
 - **Motion Detection Recording** Indicates if motion detection recording is enabled or disabled using the **Enable Motion Detection Recording** checkbox.
 - **MAC Address** Displays the Camera's MAC address.
 - **User Name and Password** Displays the user name. The password is displayed as "•••••" for security reasons.



Setup > Network Camera

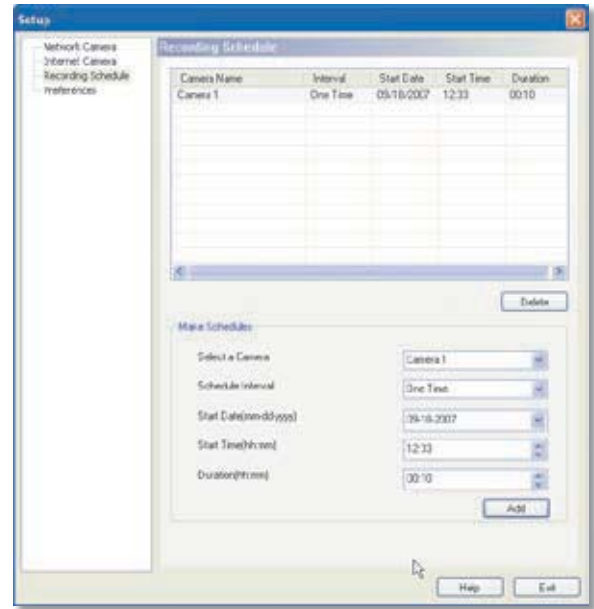
Click **Save**, then **Yes** to save the Camera's settings.

5. To set up a Camera that is located on the Internet, click the **Internet Camera** tab.



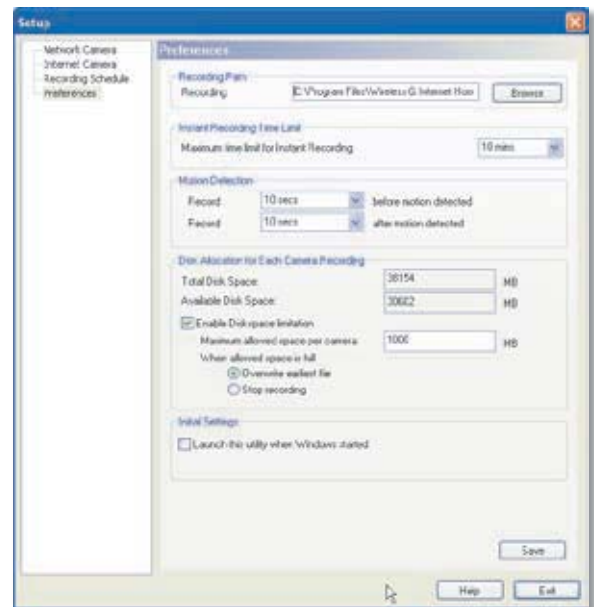
Setup > Internet Camera

6. To set up a recording schedule for a Camera, click the **Recording Schedule** tab.



Setup > Recording Schedule

7. To configure the Camera's preference settings, click the **Preferences** tab.



Setup > Internet Camera

To learn how to use the Camera Utility, go to "Using the Camera Utility."

Advanced users: If you want to use the Camera's Web-based Utility, go to "Chapter 4: Advanced Configuration with the Web-Based Utility."

Using the Camera Utility

After the Camera Utility has been installed, its icon will be displayed in two locations, one on your desktop and one in the system tray of your desktop's taskbar.



NOTE: This Camera Utility is backward-compatible with the Wireless-B Internet Video Camera, so you can use this Utility to control Wireless-G and Wireless-B Internet Video Cameras on your network.

There are two ways to open the Camera Utility:

- Double-click the icon on your desktop (the icon acts as a shortcut)
- Right-click the icon in the system tray, and then click **Main Program**.



Camera Utility Icon on Desktop

Main Screen

After you open the Utility, the Main screen is displayed. The Main screen is divided into three sections, *Camera Status*, Camera functions, and viewing windows for Channels 1-8 of the Utility. (To view different windows, use the scroll bar on the right.)

Camera functions include finding or deleting Cameras, changing Camera settings, scheduling recordings, accessing saved files, and configuring the motion detection settings.

To configure the Utility settings, click **Utility Settings**. To get help information, click the **?** button in the upper right-hand corner. To minimize the Utility, click the **-** button in the upper right-hand corner. To exit the Utility, click the **X** button in the upper right-hand corner.



Main Screen

Camera Status

This section of the Main screen lists all of the Cameras the Utility has detected. To view the video of a specific Camera, select a Camera, then drag-and-drop the Camera to a viewing window.

CH This is the Channel used by the Camera within the Utility. (The Utility offers up to eight channels.)

Camera Name This is the name you gave to the Camera.

AUDIO ON/OFF The Compact Wireless-G Internet Video Camera does not feature audio; however, other Cameras do. This displays the status of their audio transmissions.

VIDEO ON/OFF This indicates the status of the Camera's video transmissions.

Main > Add Camera

To add a Camera on your local network or the Internet, click **Add Camera** on the Main screen.

The *Add Camera* screen will appear. There will be two tabs available, LAN and Internet.

LAN

The *LAN* screen shows the Cameras found on your local area network, along with each Camera's status information.



Main > Add Camera > LAN

Cameras on LAN

The Utility will search for Cameras on the local area network and display a list in the *Cameras on LAN* box. To run a new search, click the **Search** button.

Camera Data

For the Camera whose name is currently selected in the *Cameras on LAN* box, the following information will be displayed in the *Camera Data* box:

Camera Name This is the name you gave to the Camera.

MAC Name Displayed here is the MAC address of the Camera.

Description This is the information about the Camera that you entered.

Address Shown here is the Camera's IP address.

Port Number This is the port number the Camera uses for communication.

Login If you set up the Camera with a name and password, then you will need to enter them here in order to access the Camera.

Name Enter the login Name.

Password Enter the login Password.

To add a Camera to the Utility's list, select the Camera you wish to add by clicking its name in the *Cameras on LAN* box. Then click the **Add** button. You will be notified when the Camera has been added. Click the **OK** button.

To close this screen, click the **X** button in the upper right-hand corner.

Internet

The *Internet* screen shows the Camera found on the Internet, along with the Camera's status information.



Main > Add Camera > Internet

Test Results

First, go to the Camera Data section. Enter the Camera's IP Address, Port Number, and login information (if required). Then click the **Connect** button to find the Camera. The following information will be displayed:

Camera Data

Camera Name This is the name you gave to the Camera.

MAC Name Displayed here is the MAC address of the Camera.

Description This is the information about the Camera that you entered.

Address Shown here is the Camera's IP address or SoloLink DDNS address.

Port Number This is the port number the Camera uses for communication.

Login If you set up the Camera with a name and password, then you will need to enter them here in order to access the Camera.

Name Enter the login Name.

Password Enter the login Password.

To add the Camera to the Utility's list, click the **Add** button. If you wish to clear a Camera, click the **Clear** button.

To close this screen, click the **X** button in the upper right-hand corner.

View Video




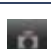





The *Camera Status* section lists all the Cameras detected by the Utility. To view a specific Camera's video, select it from the list and drag-and-drop it on a Channel (viewing) window.

Double-click the Camera's viewing window to bring up the *View Video* screen. This screen displays the selected Camera's video at full size, and provides icons that you can use to record, play, stop, take pictures, zoom, adjust the audio, or double the window's size. These icons are described below.

To close the *View Video* screen, click **X** in the upper right-hand corner.



Main > View Video

Icon	Function
	If you want to record the current video, click this icon.
	If you want to play the current video, click this icon.
	If you want to freeze the current frame of video or stop recording, click this icon.
	To take a snapshot of the current frame of video, click this icon.
	To zoom in on a section of the window, click this icon. Then use your mouse to select the section to magnify. Click the icon again to disable the zoom feature.
	Click this icon to turn audio on or off.
	Click this bar and move its endpoint to raise or lower the volume.
	This displays the Camera's Channel. (This icon cannot be used to change the Camera's Channel. To do that, you must go to the Main screen and drag and drop the Camera to the new channel's viewing window.)
	If you want to make the viewing window twice as large, click this icon.

Delete Camera

To delete a Camera, select its name in the *Camera Status* section, and click **Delete Camera**. When you are asked to confirm the deletion, click the **OK** button.



Main > Delete Camera

Main > Camera Settings

To modify a Camera's settings, select its name in the *Camera Status* section of the *Main* screen, and click **Change Settings**. The *Change Settings* screen appears.



Main > Change Settings

Test Results

Click the **Test** button to check the connection. The results will be displayed. If you need to change the Camera's network settings or login information, you can do so on this screen.

Camera Data

Camera Name This is the name you gave to the Camera.

MAC Name Displayed here is the MAC address of the Camera.

Description This is the information about the Camera that you entered.

Address Enter the Camera's new IP address or SoloLink DDNS address.

Port Number Enter the new port number that the Camera uses for communication.

Login If you set up the Camera with a name and password, then you can change them here.

Name Enter the new login Name.

Password Enter the new login Password.

Click **Save** to save the new settings.

To close this screen, click **X** in the upper-right corner.

Main > Scheduled Recordings

To schedule recordings for a Camera, select its name in the *Camera Status* section of the *Main* screen, and click **Scheduled Recording**.

A list of scheduled recordings will appear.



Main > Scheduled Recordings

Frequency Decide which days you want the Camera to record. Select the appropriate Frequency from the drop-down menu.

Start Time Select the time you want the recording to begin.

Duration Select how long you want the recording to be.

After you have made your selections, click **Add** to save the new scheduled recording.

To delete a scheduled recording, select the recording from the list, and click **Delete**.

To close this screen, click **X** in the upper-right corner.

You may find it helpful to know how much memory is required to hold a video recording. The following table lists estimated bit rates and file sizes for a typical video recording at each available resolution and video.



NOTE: In order for the scheduled recordings to occur, the Multi-Camera Viewer & Recorder Utility must be running on a networked PC.

Estimated Hard-Drive Memory Space Required for Video Recording per Hour

Resolution	Quality Level	Bit Rate	File Size
320 x 240	Very High	900kbps	430MB
320 x 240	High	500kbps	330MB
320 x 240	Normal	300kbps	240MB
320 x 240	Low	120kbps	230MB
320 x 240	Very Low	40kbps	225MB
160 x 120	Very High	800kbps	380MB
160 x 120	High	400kbps	270MB
160 x 120	Normal	200kbps	230MB
160 x 120	Low	100kbps	220MB
160 x 120	Very Low	40kbps	210MB



NOTE: The maximum length of a recording file is one hour. If a recording is more than one hour long, then multiple files will be saved.

Main > Saved Files

To access the saved files of a Camera, select its name in the *Camera Status* section of the *Main* screen, and click **Saved Files**. You have three types of files available: Recorded Videos, Motion Detection Videos, and Snapshot Pictures.



Main > Saved Files

To close this screen, click **X** in the upper-right corner.

Recorded Files

Click **Recorded Videos**, and the *Recorded Files* screen appears and displays a list of files, organized by Camera Name, File Name, and Start Time.



Main > Saved Files > Recorded Files

Camera Name This is the name of the Camera that was used.

File Name Displayed here is the name of the file. If it was an instant recording, the filename format is "LAN_R_(date)_(end time)". If it was a scheduled recording, the filename format is "LAN_(date)_(end time)".

Start Time This is the time the recording began.

To play a recording, select the appropriate file and click **Play**. To delete a recording, select the appropriate file and click **Delete**. If the recorded file you want is not listed, click **Explore** to find it. To rename a recorded file, click **Explore**. After you have found the file, you can rename it.

To close this screen, click **X** in the upper-right corner.

Motion Detection Files

Click **Motion Detection Videos**, and the *Motion Detection Files* screen appears and displays a list of files, organized by Camera Name, File Name, and Start Time. (Do not confuse this with the *Main* screen's **Motion Detection** option, which accesses the *Motion Detection Settings* screen.)



Main > Saved Files > Motion Detection Files

Camera Name This is the name of the Camera that was used.

File Name Displayed here is the name of the file.

Start Time This is the time the recording began.

To play a video, select the appropriate file and click **Play**. To delete a file, select the appropriate file and click **Delete**.

If the file you want is not listed, click **Explore** to find it. To rename a file, click **Explore**. After you have found the file, you can rename it.

To close this screen, click **X** in the upper-right corner.



NOTE: Use Windows Media Player 7 or higher to view your recordings.

Snapshots

Click **Snapshot Pictures**, and a Windows Explorer window appears and displays the available SnapShot folders. The name of each folder is the MAC address of the Camera that took the snapshots in the folder. Double-click a folder to see a list of its images.

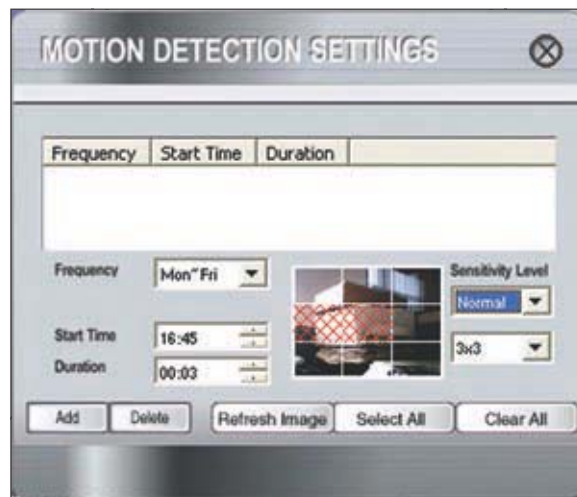


Window Showing Snapshot Folders

Main > Motion Detection

You can have video recorded when the Utility detects motion in a Camera's field of view. To configure these settings, select its name in the *Camera Status* section of the *Main* screen, and click **Motion Detection**.

A list of scheduled motion detection recordings will appear.



Main > Motion Detection Settings

Frequency Decide which days you want the Camera to monitor its field of view for motion. Select the appropriate Frequency from the drop-down menu.

Start Time Decide what time you want the Camera to begin monitoring for motion. Select the time you want the video recording to begin.

Duration Select how long you want the Camera to monitor for motion.

Sensitivity Level You have a choice of motion sensitivity levels for the Camera. Select the appropriate level from the drop-down menu.

3 x 3 (default) By default, the Camera's field of view is split into nine sections (see the on-screen image). If you want it split into 16 sections, select 4 x 4. If you want it split into 25 sections, select 5 x 5.

On the on-screen image depicting the Camera's field of view, click the sections you want monitored. The selected sections will be marked by a crisscross pattern. If you want to select all sections, click **Select All**. If you want to de-select all sections, click **Clear All**. To refresh the current image, click **Refresh Image**.

After you have made your selections, click **Add** to save the new scheduled motion detection video.

To delete a scheduled motion detection video, select the video from the list, and click **Delete**.

To close this screen, click **X** in the upper-right corner.



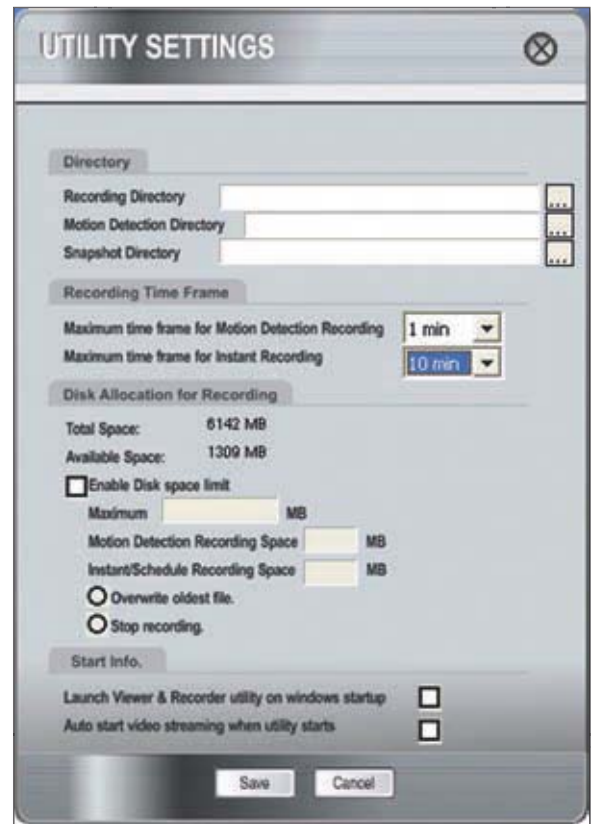
NOTE: To specify the maximum length for a single motion detection video recording, click **Utility Settings** on the *Main* screen.



NOTE: In order for the motion detection feature and its recordings to occur, the Multi-Camera Viewer & Recorder Utility must be running on a networked PC.

Main > Utility Settings

To configure the settings of the Multi-Camera Viewer & Recorder Utility, click **Utility Settings** on the *Main* screen. The *Utility Settings* screen will appear. You can change the Directory, Recording Time Frame, Disk Allocation for Recording, and Start Info settings on this screen.



Main > Utility Settings

Directory

You can specify the directories where the recordings, motion detection videos, and snapshots will be saved.

Recording Directory Instant and scheduled recordings will be saved in this directory. The default directory is **C:\Program Files\Linksys\Wireless-G Internet Video Camera\Record**. Click ... to designate a different directory.

Motion Detection Directory Motion detection video recordings will be saved in this directory. The default is **C:\Program Files\Linksys\Wireless-G Internet Video Camera\Motion**. Click ... to designate a different directory.

Snapshot Directory Snapshots will be saved in this directory. The default directory is **C:\Program Files\Linksys\Wireless-G Internet Video Camera\Snapshot**. Click ... to designate a different directory.

Recording Time Frame

You can specify the maximum length of motion detection and instant recordings.

Maximum time frame for Motion Detection Recording This is the maximum length of time the Utility will record when motion is detected. (To configure the Motion Detection settings, click Motion Detection on the main menu.) The default is 1 min. To change the default, select the maximum length of time you want from the drop-down menu.

Maximum time frame for Instant Recording This is the maximum length of time the Utility will record when you click the Instant Recording icon on the viewing window of a Camera. The default is 10 min. To change the default, select the maximum length of time you want from the drop-down menu.

Disk Allocation for Recording

You can designate how much hard disk space you want to use for recording.

Total Space This is the total amount of space available on the hard drive of the PC running this Utility.

Total Space and Available Space This is the amount of space available for recording.

Enable Disk space limit If you want to limit the amount of disk space available for recording, click the checkbox. Enter the maximum number of megabytes in the *Maximum* field.

Of the total amount of disk space available for recording, you can designate the amount of space available for motion detection recordings. Enter the maximum number of megabytes in the *Motion Detection Recording Space* field.

Of the total amount of disk space available for recording, you can designate the amount of space available for instant and scheduled recordings, enter the maximum number of megabytes in the *Instant/Scheduled Recording Space* field.

If the hard drive runs out of space, the Utility has two options: it can overwrite the oldest files or stop recording. Select the option you want, **Overwrite oldest file** or **Stop recording**.

Start Info

You can designate when and how you want the Utility to launch.

Launch Viewer & Recorder utility on Windows startup If you want the Utility to launch when Windows starts up, click the checkbox.

Auto start video streaming when utility starts If you want video to automatically begin streaming when the Utility launches, click the checkbox.

After you have made your changes, click **Save** to save the new settings.

To cancel your changes, click **Cancel**.

To close this screen, click **X** in the upper-right corner.

To set up the Linksys SoloLink Service, go to “Chapter 3: Setting up the Linksys SoloLink DDNS Service.”

If you want to use the Camera’s Web-based Utility, go to “Chapter 4: Advanced Configuration with the Web-Based Utility.”

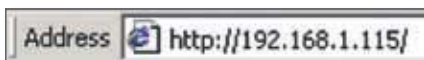
Chapter 4: Advanced Configuration with the Web-based Utility

Overview

Use the Camera's Web-based Utility to access and alter its settings. This chapter will describe each webpage in the Utility and its features. The Utility can be accessed via the web browser of a computer connected to the Camera.

How to Access the Web-based Utility

To access the Utility, launch Internet Explorer, and enter the Camera's IP address in the *Address* field. (If there are no DHCP servers available, the camera automatically defaults to 192.168.1.100.) Then, press **Enter**.



Camera's Default IP Address

To ensure security, you will be asked to enter a user name and password before you can access the Camera. If you have not changed the Camera's user name and password, then enter **admin** in the *User name* and *Password* fields (**admin** is the default). Then, click **OK**.

The *Welcome* screen of the Web-Based Utility will appear.



Web-Based Utility *Welcome* Screen

There are six tabs across the top of the *Welcome* screen: **Home**, **View Video**, **Setup**, **Linksys Web**, **Help**, and **Exit**.

- **Home** – Select this tab to return to the *Welcome* screen.
- **View Video** – Select this tab to view the Camera's video. Go to the "View Video" section for more information.
- **Setup** – Select this tab to alter the Camera's settings. Go to the "Setup" sections for more information.
- **Linksys Web** – Select this tab to go to the Linksys website, **www.linksys.com**.

- **Help** – Select this tab to display the *Help* screen. Go to the "Help" section for more information.
- **Exit** – Select this tab to close the Utility.

View Video

Follow these instructions to view the Camera's video.

1. Click the **View Video** tab on the *Welcome* screen.



NOTE: To view video using a web browser, you must use Internet Explorer version 5.5 or higher. The View Video feature will not work with Netscape. Netscape users should use the Camera Utility instead.

2. A *Security Warning* screen about an OCX plug-in may appear. To enable your computer to see the Camera's video, click **Yes**.



Security Warning Screen

3. A screen appears showing the video from the Camera.



View Video Screen



NOTE: For added security, you should always change the Login Name and Password through the Utility's *Setup > Users* screen.