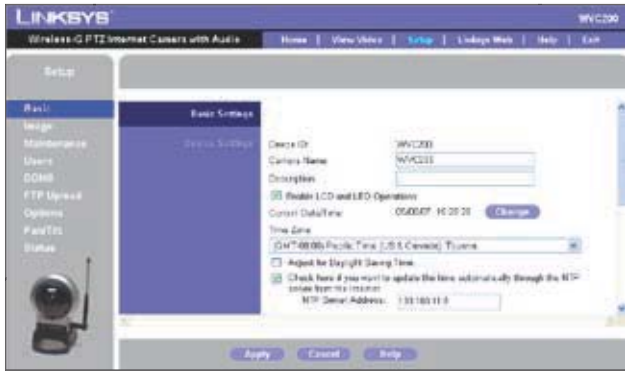


Setup > Basic

The *Setup > Basic* screen allows you to alter the Camera's Device settings, Network settings, Wireless settings, and Security settings.



Setup > Basic Screen

Device Settings

- **Device ID** This is the Camera name that is used by the Camera and the Utility to exchange data.
- **Camera Name** You may assign the Camera any name up to 15 characters long. Unique, memorable names are helpful, especially if you use multiple Cameras on the same wireless network.
- **Description** Enter information about the Camera in this field. You can enter up to 32 characters.
- **Enable LCD and LED Operations** This feature allows you to enable or disable the Camera's LCD and LEDs.
- **Current Date/Time** This is the Camera's current date and time. To change it, click **Change**, and the *Set Date/Time* screen appears. To use the computer's date and time, click **Sync with PC**; otherwise, update the date and time and click **Set New Time**. Then, click **Close**.



Set Date/Time Screen

- **Time Zone** Select the time zone for the Camera's location.
- **Adjust for Daylight Saving Time** Select this to adjust the Camera's current time for Daylight Saving Time.



NOTE: You must unselect this option when Daylight Saving Time finishes.

- **Check here if you want to update the time automatically through the NTP server from the Internet** Select this option and fill in the *NTP Server Address* field if you want the Camera to update its time at regular intervals by contacting an NTP (Network Time Protocol) server on the Internet.

Network Settings

- **Configuration Type** If you want to automatically assign the Camera an IP address from a DHCP server, then select **Obtain Address Automatically (DHCP)**. If you want to assign the Camera a static IP address, then select **Fixed IP Address**, and complete the *IP Address*, *Subnet Mask*, *Gateway*, *Primary DNS* and *Secondary DNS* fields.
- **IP Address, Subnet Mask, Gateway, Primary DNS, Secondary DNS** Complete these fields if you want to assign the Camera a static IP address. You need to enter at least one DNS address.

Wireless Settings

- **SSID** Enter the network's SSID or network name here.
- **Network Type** Select the network's mode, **Ad-hoc** or **Infrastructure**.
- **Channel No** If the Camera is set to Ad-hoc mode, select its channel setting from the drop-down menu.
- **Security** Click **Edit Security Settings** to display the *Wireless Security* screen.

Security Mode

Select the appropriate option based on your wireless network configuration.

Disabled

This option implements no security on your wireless network. Data is not encrypted before transmission.

WEP

WEP is a basic encryption method, which is not as secure as later methods such as WPA-Personal or WPA2 Personal. However, it is supported by all clients.



Wireless Security > Security Mode > WEP

- **TX Key** Select the number of the key used on the

wireless network.

- **WEP Encryption** Select the appropriate option for key length based on your network settings.
- **Passphrase** Type in the passphrase used to generate WEP keys on your network and click **Generate**.
- **Key 1 - Key 4** Key values can be entered manually or generated from a passphrase.
- **Authentication** Select the appropriate authentication type used on the wireless network.

WPA Personal

This method offers TKIP encryption with dynamic encryption keys.



Wireless Security > Security Mode > WPA Personal

- **WPA Algorithm** This cannot be modified.
- **WPA Shared Key** Enter the shared key used for accessing the wireless network.

To save your changes, click **Apply**. To cancel any unsaved changes, click **Cancel**. To get additional information about the screen's features, click **Help**.

Setup > Image

The *Setup > Image* screen allows you to alter the Camera's video settings.



Setup > Image Screen

Video Settings

- **Image Type** Select the desired type:
 - **MPEG-4** gives smooth motion and high quality images, but the video image quality will deteriorate if sufficient bandwidth is not available.
 - **MJPEG** requires more bandwidth than MPEG-4, but if the bandwidth is insufficient, the frame rate will drop while image quality remains at the same level.

- **Resolution** Select the resolution you want for viewing or recording the Camera's video. Select **640*480** for the highest resolution, **320*240** for medium resolution, and select **160*128** for the lowest resolution.
- **Video Quality Control** Select either **Fixed Bit Rate** or **Fixed Quality** for the video stream.
 - **Fixed Bit Rate** Select the bit rate you want for viewing or recording the Camera's video. The range varies from **64 Kbps** to **1.2 Mbps**.
 - **Fixed Quality** Select the level of quality you want for viewing or recording the Camera's video. The range varies from **Very Low** to **Very High**.

It may be helpful to know what the bit rates are for video viewing or recording at different resolutions and image quality levels. The following table lists these estimated bit rates.

Estimated Bit Rates for Video Viewing or Recording

Resolution	Quality Level	Bit Rate in kbps
640 x 480	Very High	4000
640 x 480	High	3200
640 x 480	Normal	1200
640 x 480	Low	480
640 x 480	Very Low	160
320 x 240	Very High	1000
320 x 240	High	800
320 x 240	Normal	300
320 x 240	Low	120
320 x 240	Very Low	40
160 x 128	Very High	800
160 x 128	High	400
160 x 128	Normal	200
160 x 128	Low	100
160 x 128	Very Low	40



NOTE: Video quality and/or performance may be affected by the number of users connected to the Camera.

- **Max Frame Rate** Select the maximum frame rate for the camera. Reducing this lowers the amount of bandwidth required by the camera.
- **Power Line Frequency** Select the power line frequency (**50Hz** or **60Hz**) used in your region, to improve the picture quality under fluorescent lighting.

Adjustments

- **Color Balance** Select the desired option to match the current environment and lighting.

- **Exposure** If necessary, you can adjust the exposure to obtain a better image. For example, if the camera is facing minimal light, the image may be too dark. In this case, you can increase the exposure.
- **Sharpness** Select the desired option for the sharpness. You can select a Sharpness value between **-3** and **3**.

Options

- **Flip Image/Mirror Image** The **Flip** option rotates the image 180° vertically; the **Mirror** option rotates the image 180° horizontally. If the camera is mounted upside-down on the ceiling, select both **Flip** and **Mirror** to rotate the image to the correct position.
- **Enable Microphone** Select this to enable audio. Using Audio increases the bandwidth requirements slightly.
- **Enable Time Stamp** Select this to display a time stamp on the video.
- **Enable Text Display** To display text on the video, select this, then enter up to 20 characters in the field.

To save your changes, click **Apply**. To cancel any unsaved changes, click **Cancel**. To get additional information about the screen's features, click **Help**.

Setup > Maintenance

The *Setup > Maintenance* screen allows you to reset the Camera's factory defaults and upgrade the firmware.



Setup > Maintenance Screen

Restore Factory Defaults

- **Restore Defaults** To restore the Camera to its factory default settings, click **Restore Defaults**.



NOTE: This will overwrite the Camera's settings with the factory defaults. Any changes you made to the Camera's settings will be lost; you will not be able to recover them unless you saved them as described in "Configuration" below.

Restart

- **Restart** To restart the Camera, click **Restart**.

Firmware Upgrade

- **Upgrade Firmware** New firmware versions are posted at www.linksys.com and can be downloaded for free. If the Camera is functioning satisfactorily, there is no need to download a newer firmware version, unless that version has a new feature that you want to use. Loading new firmware onto the Camera does not always enhance its performance.

Linksys recommends that you upgrade the Camera's firmware within your network; in other words, use a computer within the Camera's local network. If you attempt to upgrade the Camera's firmware from a remote location—using a computer outside of the Camera's local network—the upgrade will fail.

To upgrade the firmware:

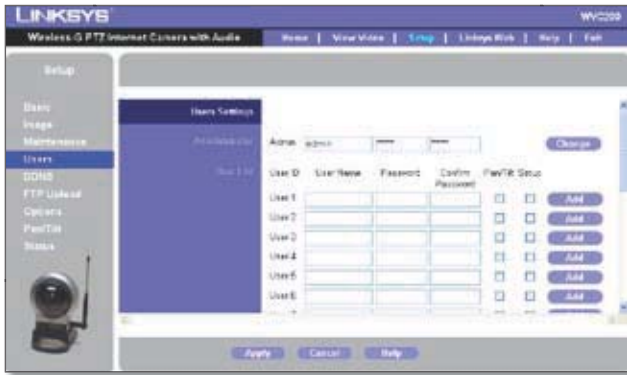
1. Go to the Linksys website, www.linksys.com, and download the firmware upgrade file for the Camera. Then extract the file.
2. From the *Setup > Maintenance* screen, click **Upgrade Firmware**.
3. You will see the *Upgrade Firmware* screen. Click **Browse** to find the extracted file, and then double-click it.
4. Click **Start Upgrade**, and follow the on-screen instructions. To cancel the upgrade, click **Cancel**. For further help, click **Help**.

Configuration

- **Save Configuration** Select this to save the Camera's current configuration to your computer, so that you can recover these settings at a later time.
- **Upload Configuration** Select this to upload the Camera's configuration from a file on your computer. Enter the file's location and name in the field, or click **Browse** to locate the file on your computer.

Setup > Users

The *Setup > Users* screen lets you set the user name and password for the Camera's administrator and users, as well as designate access rights for the users.



Setup > Users Screen

Administrator

Use this to set the user name and password of the Camera administrator.

- **Admin** Enter the administrator's name in the first field, then enter the password in the second and third fields. Then, click **Change** to set the information.

User List

Use this to set each user's name and password and to assign each user's access rights.

- **User Name** Enter the user's name.
- **Password, Confirm Password** Enter the password in both fields.
- **Pan/Tilt** Select this option to grant the user access to the Pan/Tilt options.
- **Setup** Select this option to allow the user to configure the camera without having to grant the user administrator rights.

Click **Add** to set the user's information.

To save your changes, click **Apply**. To cancel any unsaved changes, click **Cancel**. To get additional information about the screen's features, click **Help**.

Setup > DDNS

The *Setup > DDNS* screen allows you to set up and configure your DDNS Service. DDNS (Dynamic Domain Name System) lets you assign a fixed host and domain name to a dynamic Internet IP address. If you have already set up your SoloLink account, then you can use this screen to register additional Cameras.



Setup > DDNS Screen

- **Enable DDNS** Select this option to enable a DDNS service with the Camera.
- **Service Provider** Select your DDNS service provider from this drop-down menu. Your selection will determine the options that are displayed in the rest of the screen.

SoloLink DDNS

- **Username** Enter the username you have set up on your SoloLink account. If you are a new user, click **New User? - Click here to Register**. The *New User Registration* screen will appear. Click **Continue** to continue, or click **Back** to return to the previous screen. Your web browser will automatically start up, and you will visit a website to set up your SoloLink account. Follow the on-screen instructions. For more information, refer to "Chapter 6: Setting up the Linksys SoloLink DDNS Service," which will guide you through setup of your SoloLink account.
- **Password** Enter the password you have set up on your SoloLink account. If you have forgotten your password, click **Forgot your Password?**

The *Password Request* screen will appear. Complete the *Domain name* field. Click **Continue** and your username and password will be e-mailed to the e-mail address registered with your SoloLink DDNS account. Click **Cancel** to cancel your change. Click **Back** to return to the previous screen.

- **Your Domain** Enter the host and domain name you have set up on your SoloLink account. It should be in this format: <Location ID>.ourlinksys.com. For example, if **myhouse** is the Location ID, then the host and domain name would be **myhouse.ourlinksys.com**.
- **Device Name** Enter the name you gave the Camera.
- **WAN Port** Enter the number of the port you will use to remotely access the Camera. If you need to find an available port, click **Find Available Port** and follow the on-screen instructions.



NOTE: If you use the Camera's DDNS feature, then you must also configure the port forwarding feature on your network router. Go to www.linksys.com/portfwd for instructions on how to configure a Linksys router. For other routers, refer to your router's documentation.

- **DDNS Service Update** Depending on how often you want the DDNS service to update the dynamic IP address, select the appropriate time interval from the drop-down menu. To update the dynamic IP address immediately, click **Update Now**.

Status

- **Registration Status** This displays your SoloLink registration status.
- **Address Update Status** This indicates the status of your address update.
- **Last Update Attempt** This shows when the last address update attempt was made.
- **Last Successful Update** This shows when the last successful address update was made.
- **Options** To login to your SoloLink account, click **DDNS Account**. To remove the Camera from the DDNS service, click **Remove Camera**.

DDNS

The following options appear if you select **DynDNS** or **TOZ** as your DDNS Service Provider. Use these to set up and manage your DDNS service.

- **Host Name** Enter the Host Name.
- **Account** Enter your DDNS account name.
- **Password** Enter your password.
- **Check WAN IP Address** Select how often you want the DDNS service to check the WAN IP address, and specify the time to start checking.

To save your changes, click **Apply**. To cancel any unsaved changes, click **Cancel**. To get additional information about the screen's features, click **Help**.

Setup > FTP Upload

The *Setup > FTP Upload* screen allows you to manage images uploaded to an FTP server.



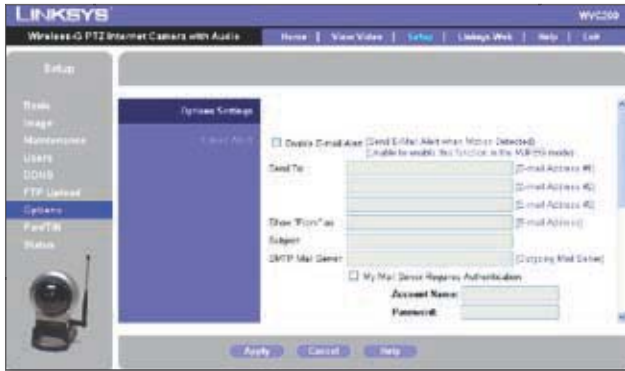
Setup > FTP Upload Screen

- **Enable FTP Upload** Select this option to enable the FTP Upload feature. If enabled, you must enter the details for the FTP Server.
- **Primary FTP Server** Enter the name or IP address of the Primary FTP Server.
- **Login Name** Enter the Login name required to access the FTP server.
- **Password** Enter the password for FTP server access.
- **Port** Enter the Port number required to gain access to the FTP server.
- **Enable Passive Mode** Select this option to enable the Passive Mode feature as required.
- **File Pathname** Enter the desired pathname here.
- **Upload to the secondary FTP if the camera cannot connect to the primary FTP** To upload to a secondary FTP Server when the Camera cannot connect to the Primary FTP Server, select this option, then enter the following details for the Secondary FTP Server.
 - **Secondary FTP Server, Login Name, Password, Port** Enter the Secondary FTP Server's name or IP address, login name, password, and port number.
 - **Enable Passive Mode** Select this option to enable the Passive Mode feature as required.
 - **File Pathname** Enter the desired pathname here.
- **Photo** Enter the desired number of photo shots here. Up to four snapshots can be uploaded per interval.
- **Upload Interval** Select the desired option for the upload interval.

To save your changes, click **Apply**. To cancel any unsaved changes, click **Cancel**. To get additional information about the screen's features, click **Help**.

Setup > Options

The *Setup > Options* screen allows you to alter the Camera's e-mail alert features, UPnP configuration, and Alternate Port settings.



Setup > Options Screen

E-mail Alert

You can choose to be notified when the Camera detects motion in its field of view. You will be sent a text-only e-mail or an e-mail with video attached.



NOTE: Motion detection can be triggered by rapid changes in lighting condition, as well as by moving objects. For this reason, it should only be used indoors.

- **Enable E-mail Alert** Select this option to be notified by e-mail when the Camera detects motion.
- **Send to** Enter up to three e-mail addresses that will receive e-mail alerts.
- **Show "From" as** Enter the text that you want displayed in the *From* field of any e-mail alert message.
- **Subject** Enter the Subject for the e-mail alerts.
- **SMTP Mail Server** Enter the IP address of the outgoing mail SMTP server. If it requires authentication, select **My Mail Server Requires Authentication**, and fill in the *Account Name* and *Password* fields.
- **Pan/Tilt** This option is only available if your camera is fitted with a Pan/Tilt control. If available, select the desired option to resolve conflict between the Pan/Tilt and Motion Detection features.
- **Delay between E-mails** Enter the minimum time interval between e-mail alerts. The default is **2 minutes**.
- **E-Mail Video** Select **Enable** from the drop-down box to have a video clip attached to each e-mail alert. Then select the video clip length, up to a maximum of 5 seconds. The default is **2 seconds**. Select **Disable** from the drop-down box if you want the Camera to send text-only e-mail alerts.

- **Area/Sensitivity** Click this button to enter the motion detection sub-screen. You can set the area or areas of the video image to be examined, and adjust the sensitivity of detection for each area.

UPnP

- **Enable UPnP** When enabled, the Camera's Universal Plug and Play (UPnP) feature allows a UPnP-enabled computer to easily detect the Camera. The Camera's UPnP feature is disabled by default. If your computer is UPnP-enabled, select this option.

Alternate Port

- **Enable Alternate Port** If you want the Camera to be able to use an alternate port for communications, select this option. Then, enter the desired port number in the range from **1024** to **65534** in the *Port Number* field. The default port number is **1024**.

If you already have a Web Server on your LAN, then you should enable the Alternate Port and use this port number instead of port 80.

RTP/RTSP

- **RTSP Port** To change the RTSP Port number, enter the desired number in the range of **1024** to **65535**. The default is **554**.
- **RTP Data Port** To change the RTP Data Port, enter the desired number in the range of **1024** to **65535**.
- **Max RTP Data Packet** To change the maximum length of RTP data packets, enter the desired maximum length in the range of **400** to **1400**.

To save your changes, click **Apply**. To cancel any unsaved changes, click **Cancel**. To get additional information about the screen's features, click **Help**.

Setup > Pan/Tilt

The *Setup > Pan/Tilt* screen allows you to manage the Camera's preset positions as well as the pan and tilt.



Setup > Pan Tilt Screen

Set Preset

- **Position buttons** Use these buttons to adjust the Camera's position.
- **Calibration** Click this button to reset the calibration of the Pan/Tilt area.
- **Set Home** To set the Home position, set the Camera to the desired position and then click **Set Home**.
- **Current Position** To save the current position as a Preset Position, enter the desired name for the position and click **Add**.
- **Preset Position** To delete a preset position, select it from the drop-down box and click **Delete**.

Pan/Tilt Control

- **Pan/Tilt Movement** Select **On** if you want to use the Pan/Tilt Movement feature, otherwise select **Off**.
- **Default Home Position** Click **Reset** to reset the Default Home Position.

Rotation Sequence

This feature determines how the camera will move when it is set to **Rotate**. You create a list of Preset Positions; the Camera will go to the first position in the list, then to each subsequent position, stopping at each position for the specified length of time. The Camera will stop moving when it reaches the last position in the list.

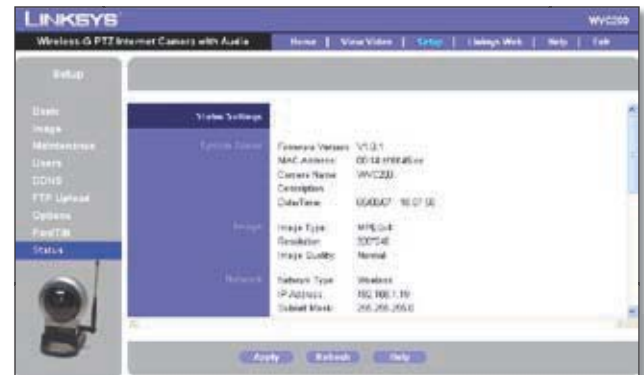
To create the Rotation Sequence, select the desired Preset Position in the *Preset* column, select the desired time to remain at this position from the *Time* drop-down box, and click **Add >>**. Repeat until the desired sequence is complete.

To delete a position from the Sequence, select the desired position and click **Delete**.

To save your changes, click **Apply**. To cancel any unsaved changes, click **Cancel**. To get additional information about the screen's features, click **Help**.

Setup > Status

The *Setup > Status* screen allows you to view the Camera's status information and log.



Setup > Status Screen

System Status

- **Firmware Version** The version of the current firmware installed.
- **MAC Address** The MAC Address of the Camera is displayed here.
- **Camera Name** The name you gave to the Camera is displayed here.
- **Description** Information about the Camera, such as location, is displayed here.
- **Date/Time** The current date and time are shown here.

Image

- **Image Type** This displays the compression type of the video stream.
- **Resolution** This displays the image size of the video stream.
- **Image Quality** This displays the image quality of the video stream.

Network

- **Network Type** The wireless network's mode is shown here.
- **IP Address** The Camera's IP Address is displayed here.
- **Subnet Mask** The Camera's Subnet Mask is shown here.
- **Gateway** The Camera's Gateway address is displayed

here.

- **Primary DNS, Secondary DNS** The IP addresses of the Primary DNS and Secondary DNS are displayed here.

Wireless

- **SSID** The wireless network's SSID or name is shown here.
- **Channel** The wireless network's channel setting is displayed here.
- **Security** The wireless network's encryption level is shown here.

Syslog

- **Syslog Server** Select this option to enable the Syslog feature, then enter the address of the Syslog Server. This feature allows the Camera to upload system log files to a Syslog Server.

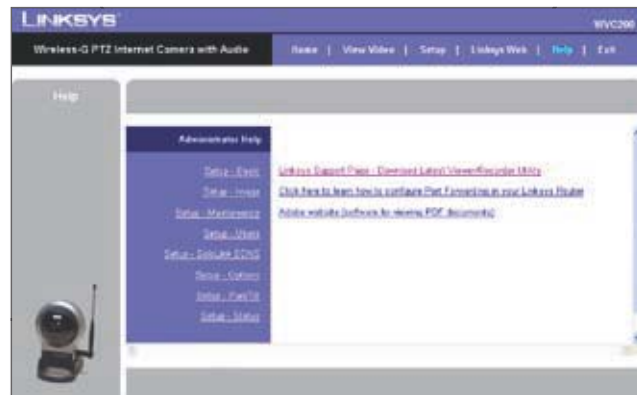
Log

- **System Log** This shows the Camera's activities. To empty the log, click **Clear Log**.

To get the Camera's most up-to-date information, click **Refresh**. To get additional information about the screen's features, click **Help**.

Help

Through the *Help* screen, you'll find links to additional resources for the Camera and its Utility. If you select the **Help** tab directly from the *Welcome* screen, then you will see the *User Help* screen and will only be able to access these resources. If you first log in to access the Camera's Setup and then select the **Help** tab, you will see the *Administrator Help* screen and will be able to restore factory defaults and upgrade the Camera's firmware.



Setup > Help Screen

- **Setup** Click any of the topics in the bar on the left to get help information.
- **Linksys Support Page - Download Latest Viewer/Recorder Utility** Click this link to download the most recent version of the Camera Utility from the Linksys website, www.linksys.com.
- **Click here to learn how to configure Port Forwarding in your Linksys Router** If you are going to use the SoloLink DDNS Service, you need to set up port forwarding on your router. For instructions on how to configure a Linksys router, click this link. If you have a different router, refer to your router's documentation.
- **Adobe website (software for viewing PDF documents)** If you do not have Adobe Acrobat Reader, click this link to download it.

Appendix A: Troubleshooting

This appendix consists of two parts: “Common Problems and Solutions” and “Frequently Asked Questions.” This appendix provides solutions to problems that may occur during the installation and operation of the Wireless-G Internet Home Monitoring Camera. Read the description below to solve your problems. If you can’t find an answer here, check the Linksys website at www.linksys.com.

Common Problems and Solutions

I can't view the Camera's video using Internet Explorer.

Make sure the OCX plug-in was correctly installed. If you're not sure, re-install the plug-in by following these instructions

- On the *Welcome* screen of the Camera's Web-based Utility, click **View Video**.
- A screen mentioning a security warning about an OCX plug-in will appear. Click **Yes** to allow the plug-in to be installed.
- You should then be able to view the Camera's streaming video.

If you still cannot view the video, make sure you have the rights to install the plug-in in your PC's Internet Explorer. If not, log into your computer as an administrator and install the plug-in.

Then you can check if the OCX plug-in has been installed. Follow these instructions:

- From Internet Explorer, go to **Tools** and **Internet Options**.
- On the General screen, click **Settings** under *Temporary Internet files*.
- Click **View Objects**. You should see a file named NetCamPlayerWeb Control installed.

The OCX plug-in is installed in Internet Explorer, but I cannot view any video.

Make sure Microsoft Internet Explorer 5.5 or higher is installed. Then delete the OCX plug-in by following these instructions:

- From Internet Explorer, go to **Tools** and **Internet Options**.
- On the General screen, click **Settings** under *Temporary Internet files*.
- Click **View Objects**.
- You should see a file named NetCamPlayerWeb Control installed. Delete this file from the list.

- The next time you click **View Video** from the web browser, you will be prompted to re-install the OCX plug-in.

When powering on the Camera, I can't immediately access the Camera from my computer.

Make sure the Camera's LED is continuously lit. When it is flashing, the Camera is initializing.

I'm not able to play my recording video files.

Make sure you have Microsoft Windows Media Player 7 or higher. If you don't, you can download the latest version from www.microsoft.com.

I have two Cameras and see two WVC54GCAs listed in my Camera Utility. When I click to view both Cameras, I see the video of only one Camera.

Make sure that the Cameras have different camera or device names. You can change this by using the Web-based Utility or running the Setup Wizard. If you use the Web-based Utility, log in and click the Setup tab. Then on the Basic screen, change the Camera Name.

I want to set up an account with the SoloLink DDNS Service, but I can't access the SoloLink website to sign up.

Make sure the Camera is properly configured on your local network. Then check to see if your PC and Camera are properly connected and your network has an active Internet connection.

When I view video remotely via the Internet, the video is very slow.

Video performance is greatly affected by your Internet connection speed. You can lower the Camera's image quality to speed up the video. Through the Camera's Web-based Utility, click the **Setup** and **Image** tabs, and then lower the image quality on the Image screen.

I cannot access the Setup tab of the Camera's Web-based Utility.

Make sure you have administrator rights. Only an administrator can change the Camera's settings.

I want to access the Camera when I'm away from home, but somehow I can't connect.

If your network uses a dynamic IP address supplied by your ISP, then the IP address you use to reach the Camera will change as well. You need to use the Linksys SoloLink DDNS Service, so you can access the Camera using its domain name while the service keeps track of

the IP address changes. To set up a Dynamic Domain Name Service (DDNS) account, click the Setup tab of the Camera's Web-based Utility. Click the **SoloLink DDNS** tab. If you are a new user, click **New User? - Click here to Register**. Follow the on-screen instructions.

You can also set up the Linksys SoloLink DDNS Service by inserting the Setup CD-ROM into your PC's CD-ROM drive. Click the **Setup SoloLink DDNS Service** button, and follow the on-screen instructions. For more information, see "Chapter 7: Setting up the Linksys SoloLink DDNS Service."

Important: To allow remote access to the Camera, you will also have to use the port forwarding feature on your network router.

I already set up my SoloLink DDNS account, but I can't access the Camera from a remote location.

Follow these instructions:

- When you enter the Camera's domain name, make sure it is in this format:

http://<Device Name>.<Location ID>.ourlinksys.com

The <Device Name> is the name you gave the Camera when you ran the Setup Wizard. The <Location ID> is the name you selected when you set up your SoloLink DDNS account.

- If the Camera is set to DHCP, make sure your local network is working properly and your router has an active Internet connection.
- If the Camera uses a static IP address, insert the Setup CD-ROM into your network PC's CD-ROM drive. Click the **Setup** button and follow the on-screen instructions. When you see the IP Settings screen, make sure the Camera's Default Gateway and Primary DNS addresses are correct. For more information, refer to the Camera's Quick Installation Guide.

Frequently Asked Questions

Can I view video using a Macintosh or Netscape Navigator?

The Camera is designed for computers running a Windows operating system and Internet Explorer 5.5 or higher. You cannot view video on a Macintosh. If you only have Netscape, you can view video using the Camera Utility. See "Chapter 3: Installing and Using the Camera Utility."

Can I directly connect the Camera to wired and wireless networks at the same time?

No. Before powering on the Camera, you should

decide if you want to connect the Camera to a wireless network via an access point or to a wired network. If your wireless and wired networks are bridged, then you can access the Camera from any networked computer, but the Camera must be directly connected to only one of the networks.

To connect the Camera to a wireless network, power on the Camera with no network cable attached. The Camera will be ready for use when the LED is lit continuously.

To connect the Camera to a wired network, connect the network cable to the Camera, and then power it on. The Camera will be ready for use when the LED is lit continuously. Can I install the Camera outdoors? No, the Camera was not designed for outdoors usage. I've recorded video for a few hours.

Why do I see multiple files saved on my computer?

The recording function saves video in chunks; each chunk is a maximum of one hour in duration. For example, if you have recorded five continuous hours, then you will see five files saved on your computer. This keeps files from getting too large.

Do I need to install the Linksys Multi-Camera Viewer and Recorder Utility?

Installation is optional. You can view video using Microsoft Internet Explorer 5.5 or higher. If you don't want to use the recording function, then you don't need to install the Multi-Camera Viewer and Recorder Utility.

Where can I find more information about the Linksys SoloLink DDNS Service?

You can go to www.linksys.com/sololink for more information.

Can I specify who gets to view the Camera's video?

Yes. Access the Camera's Web-based Utility, and click the Setup tab. After you log in, click the Users tab. You will be able to restrict access to users you have entered in the database. See "Chapter 4: Advanced Configuration with the Web-based Utility."

Can I add a time stamp to the video?

Yes. Access the Camera's Web-based Utility, and click the Setup tab. After you log in, click the Image tab. You will be able to add a time stamp as well as descriptive text to the video. See "Chapter 4: Advanced Configuration with the Web-based Utility."

How many users can view the Camera's video at the same time?

Users at four different PCs can simultaneously view the Camera's video.

What is the IEEE 802.11b standard?

It is one of the IEEE standards for wireless networks. The 802.11b standard allows wireless networking hardware from different manufacturers to communicate, provided that the hardware complies with the 802.11b standard. The 802.11b standard states a maximum data transfer rate of 11Mbps and an operating frequency of 2.4GHz.

What is the IEEE 802.11g standard?

It is one of the IEEE standards for wireless networks. The 802.11g standard allows wireless networking hardware from different manufacturers to communicate, provided that the hardware complies with the 802.11g standard. The 802.11g standard states a maximum data transfer rate of 54Mbps and an operating frequency of 2.4GHz.

What IEEE 802.11b features are supported?

The product supports the following IEEE 802.11b functions:

- CSMA/CA plus Acknowledge protocol
- Multi-Channel Roaming
- Automatic Rate Selection
- RTS/CTS feature •Fragmentation
- Power Management

What IEEE 802.11g features are supported?

The product supports the following IEEE 802.11g functions:

- CSMA/CA plus Acknowledge protocol
- OFDM protocol
- Multi-Channel Roaming
- Automatic Rate Selection
- RTS/CTS feature
- Fragmentation
- Power Management

What is ad-hoc mode?

When a wireless network is set to ad-hoc mode, the wireless-equipped computers are configured to communicate directly with each other. The ad-hoc wireless network will not communicate with any wired network.

What is infrastructure mode?

When a wireless network is set to infrastructure mode, the wireless network is configured to communicate with a wired network through a wireless access point or router.



WEB: If your questions are not addressed here, refer to the Linksys website, www.linksys.com

Appendix B: Wireless Security Checklist

Wireless networks are convenient and easy to install, so homes with high-speed Internet access are adopting them at a rapid pace. Because wireless networking operates by sending information over radio waves, it can be more vulnerable to intruders than a traditional wired network. Like signals from your cellular or cordless phones, signals from your wireless network can also be intercepted. Since you cannot physically prevent someone from connecting to your wireless network, you need to take some additional steps to keep your network secure.



1. Change the default wireless network name or SSID

Wireless devices have a default wireless network name or Service Set Identifier (SSID) set by the factory. This is the name of your wireless network, and can be up to 32 characters in length. Linksys wireless products use **linksys** as the default wireless network name. You should change the wireless network name to something unique to distinguish your wireless network from other wireless networks that may exist around you, but do not use personal information (such as your Social Security number) because this information may be available for anyone to see when browsing for wireless networks.



2. Change the default password

For wireless products such as access points, routers, and gateways, you will be asked for a password when you want to change their settings. These devices have a default password set by the factory. The Linksys default password is **admin**. Hackers know these defaults and may try to use them to access your wireless device and change your network settings. To thwart any unauthorized changes, customize the device's password so it will be hard to guess.



3. Enable MAC address filtering

Linksys routers and gateways give you the ability to enable Media Access Control (MAC) address filtering. The MAC address is a unique series of numbers and letters assigned to every networking device. With MAC address filtering enabled, wireless network access is provided solely for wireless devices with specific MAC addresses. For example, you can specify the MAC address of each computer in your home so that only those computers can access your wireless network.



4. Enable encryption

Encryption protects data transmitted over a wireless network. Wi-Fi Protected Access (WPA/WPA2) and Wired Equivalency Privacy (WEP) offer different levels of security for wireless communication.

A network encrypted with WPA/WPA2 is more secure than a network encrypted with WEP, because WPA/WPA2 uses dynamic key encryption. To protect the information as it passes over the airwaves, you should enable the highest level of encryption supported by your network equipment.

WEP is an older encryption standard and may be the only option available on some older devices that do not support WPA.

General Network Security Guidelines

Wireless network security is useless if the underlying network is not secure.

- Password protect all computers on the network and individually password protect sensitive files.
- Change passwords on a regular basis.
- Install anti-virus software and personal firewall software.
- Disable file sharing (peer-to-peer). Some applications may open file sharing without your consent and/or knowledge.

Additional Security Tips

- Keep wireless routers, access points, or gateways away from exterior walls and windows.
- Turn wireless routers, access points, or gateways off when they are not being used (at night, during vacations).
- Use strong passphrases that are at least eight characters in length. Combine letters and numbers to avoid using standard words that can be found in the dictionary.



WEB: For more information on wireless security, visit www.linksys.com/security

Appendix C: Specifications

Model	WVC54GCA
Standards	IEEE 802.11b, IEEE 802.11g
Ports	One 10/100 Auto-Crossover (MDI/MDI-X) port, Power port
Protocols	TCP/IP, HTTP, DHCP, NTP, SMTP, UPnP (Discovery only)
Button	One Reset Button
Cabling Type	RJ-45
LEDs	Power
Security Features	User Authentication, WEP/WPA-PSK, Motion Detection
WEP Key Bits	64/128 Bit
Image Sensor	CMOS
Lens	Fixed Focus
Resolution	320 x 240, 160 x 128
Relative Illumination	5.1 Lux
Effective Focus	3 mm
Sensitivity	1.0V/Lux-sec
Field of View	61.48 degrees
Compression Algorithm	MPEG-4
Record File Format	ASF
Brightness	Auto/Manual Adjustment
Environmental	
Dimensions (W x H x D)	3.54" x 4.02" x 1.46" (90 x 102 x 37mm)
Weight	0.29 lb (0.13 kg)
Power	5V DC External
Certification	FCC
Operating Temp.	32 to 104°F (0 to 40°C)
Storage Temp.	14 to 158°F (-10 to 70°C)
Operating Humidity	10 to 85% Relative Humidity, Noncondensing
Storage Humidity	5 to 90% Noncondensing

Appendix D: Warranty Information

Limited Warranty

Linksys warrants to You that, for a period of one year (the "Warranty Period"), your Linksys Product will be substantially free of defects in materials and workmanship under normal use. Your exclusive remedy and Linksys' entire liability under this warranty will be for Linksys at its option to repair or replace the Product or refund Your purchase price less any rebates. This limited warranty extends only to the original purchaser.

If the Product proves defective during the Warranty Period call Linksys Technical Support in order to obtain a Return Authorization Number, if applicable. BE SURE TO HAVE YOUR PROOF OF PURCHASE ON HAND WHEN CALLING. If You are requested to return the Product, mark the Return Authorization Number clearly on the outside of the package and include a copy of your original proof of purchase. RETURN REQUESTS CANNOT BE PROCESSED WITHOUT PROOF OF PURCHASE. You are responsible for shipping defective Products to Linksys. Linksys pays for UPS Ground shipping from Linksys back to You only. Customers located outside of the United States of America and Canada are responsible for all shipping and handling charges.

ALL IMPLIED WARRANTIES AND CONDITIONS OF MERCHANTABILITY OR FITNESS FOR A PARTICULAR PURPOSE ARE LIMITED TO THE DURATION OF THE WARRANTY PERIOD. ALL OTHER EXPRESS OR IMPLIED CONDITIONS, REPRESENTATIONS AND WARRANTIES, INCLUDING ANY IMPLIED WARRANTY OF NON-INFRINGEMENT, ARE DISCLAIMED. Some jurisdictions do not allow limitations on how long an implied warranty lasts, so the above limitation may not apply to You. This warranty gives You specific legal rights, and You may also have other rights which vary by jurisdiction.

This warranty does not apply if the Product (a) has been altered, except by Linksys, (b) has not been installed, operated, repaired, or maintained in accordance with instructions supplied by Linksys, or (c) has been subjected to abnormal physical or electrical stress, misuse, negligence, or accident. In addition, due to the continual development of new techniques for intruding upon and attacking networks, Linksys does not warrant that the Product will be free of vulnerability to intrusion or attack.

TO THE EXTENT NOT PROHIBITED BY LAW, IN NO EVENT WILL LINKSYS BE LIABLE FOR ANY LOST DATA, REVENUE OR PROFIT, OR FOR SPECIAL, INDIRECT, CONSEQUENTIAL, INCIDENTAL OR PUNITIVE DAMAGES, REGARDLESS OF THE THEORY OF LIABILITY (INCLUDING NEGLIGENCE), ARISING OUT OF OR RELATED TO THE USE OF OR INABILITY TO USE THE PRODUCT (INCLUDING ANY SOFTWARE), EVEN IF LINKSYS HAS BEEN ADVISED OF THE POSSIBILITY OF SUCH DAMAGES. IN NO EVENT WILL LINKSYS' LIABILITY EXCEED THE AMOUNT PAID BY YOU FOR THE PRODUCT. The foregoing limitations will apply even if any warranty or remedy provided under this Agreement fails of its essential purpose. Some jurisdictions do not allow the exclusion or limitation of incidental or consequential damages, so the above limitation or exclusion may not apply to You.

Please direct all inquiries to: Linksys, P.O. Box 18558, Irvine, CA 92623.

Appendix E: Regulatory Information

FCC Statement

This device complies with Part 15 of the FCC Rules. Operation is subject to the following two conditions: (1) This device may not cause harmful interference, and (2) this device must accept any interference received, including interference that may cause undesired operation.

This product has been tested and complies with the specifications for a Class B digital device, pursuant to Part 15 of the FCC Rules. These limits are designed to provide reasonable protection against harmful interference in a residential installation. This equipment generates, uses, and can radiate radio frequency energy and, if not installed and used according to the instructions, may cause harmful interference to radio communications. However, there is no guarantee that interference will not occur in a particular installation. If this equipment does cause harmful interference to radio or television reception, which is found by turning the equipment off and on, the user is encouraged to try to correct the interference by one or more of the following measures:

- Reorient or relocate the receiving antenna
- Increase the separation between the equipment or devices
- Connect the equipment to an outlet other than the receiver's
- Consult a dealer or an experienced radio/TV technician for assistance

FCC Caution: Any changes or modifications not expressly approved by the party responsible for compliance could void the user's authority to operate this equipment.

FCC Radiation Exposure Statement

This equipment complies with FCC radiation exposure limits set forth for an uncontrolled environment. This equipment should be installed and operated with minimum distance 20cm between the radiator and your body.

This transmitter must not be co-located or operating in conjunction with any other antenna or transmitter. IEEE 802.11b or 802.11g operation of this product in the USA is firmware-limited to channels 1 through 11.

Safety Notices

- Caution: To reduce the risk of fire, use only No.26 AWG or larger telecommunication line cord.
- Do not use this product near water, for example, in a wet basement or near a swimming pool.
- Avoid using this product during an electrical storm. There may be a remote risk of electric shock from lightning.



WARNING: This product contains lead, known to the State of California to cause cancer, and birth defects or other reproductive harm. Wash hands after handling.

Industry Canada Statement

This Class B digital apparatus complies with Canadian ICES-003 and RSS210.

Operation is subject to the following two conditions:

1. This device may not cause interference and
2. This device must accept any interference, including interference that may cause undesired operation of the device. This device has been designed to operate with an antenna having a maximum gain of 2dBi. Antenna having a higher gain is strictly prohibited per regulations of Industry Canada. The required antenna impedance is 50 ohms.

To reduce potential radio interference to other users, the antenna type and its gain should be so chosen that the EIRP is not more than required for successful communication.

Industry Canada Radiation Exposure Statement:

This equipment complies with IC radiation exposure limits set forth for an uncontrolled environment. This equipment should be installed and operated with minimum distance 20cm between the radiator & your body.

This transmitter must not be co-located or operating in conjunction with any other antenna or transmitter.

Avis d'Industrie Canada

Cet appareil numérique de la classe B est conforme aux normes NMB-003 et RSS210 du Canada.

L'utilisation de ce dispositif est autorisée seulement aux conditions suivantes :

1. il ne doit pas produire de brouillage et
2. il doit accepter tout brouillage radioélectrique reçu, même si ce brouillage est susceptible de compromettre le fonctionnement du dispositif. Le dispositif a été conçu pour fonctionner avec une antenne ayant un gain maximum de 2 dBi. Les règlements d'Industrie Canada interdisent strictement l'utilisation d'antennes dont le gain est supérieur à cette limite. L'impédance requise de l'antenne est de 50 ohms.

Afin de réduire le risque d'interférence aux autres utilisateurs, le type d'antenne et son gain doivent être choisis de façon à ce que la puissance isotrope rayonnée équivalente (p.i.r.e.) ne soit pas supérieure au niveau requis pour obtenir une communication satisfaisante.

Avis d'Industrie Canada concernant l'exposition aux radiofréquences :

Ce matériel est conforme aux limites établies par IC en matière d'exposition aux radiofréquences dans un environnement non contrôlé. Ce matériel doit être installé et utilisé à une distance d'au moins 20 cm entre l'antenne et le corps de l'utilisateur.

L'émetteur ne doit pas être placé près d'une autre antenne ou d'un autre émetteur, ou fonctionner avec une autre antenne ou un autre émetteur.

Wireless Disclaimer

The maximum performance for wireless is derived from IEEE Standard 802.11 specifications. Actual performance can vary, including lower wireless network capacity, data throughput rate, range and coverage. Performance depends on many factors, conditions and variables, including distance from the access point, volume of network traffic, building materials and construction, operating system used, mix of wireless products used, interference and other adverse conditions.

Avis de non-responsabilité concernant les appareils sans fil


Les performances maximales pour les réseaux sans fil sont tirées des spécifications de la norme IEEE 802.11. Les performances réelles peuvent varier, notamment en fonction de la capacité du réseau sans fil, du débit de la transmission de données, de la portée et de la couverture. Les performances dépendent de facteurs, conditions et variables multiples, en particulier de la distance par rapport au point d'accès, du volume du trafic réseau, des matériaux utilisés dans le bâtiment et du type de construction, du système d'exploitation et de la combinaison de produits sans fil utilisés, des interférences et de toute autre condition défavorable.

User Information for Consumer Products Covered by EU Directive 2002/96/EC on Waste Electric and Electronic Equipment (WEEE)


This document contains important information for users with regards to the proper disposal and recycling of Linksys products. Consumers are required to comply with this notice for all electronic products bearing the following symbol:




English - Environmental Information for Customers in the European Union

European Directive 2002/96/EC requires that the equipment bearing this symbol  on the product and/or its packaging must not be disposed of with unsorted municipal waste. The symbol indicates that this product should be disposed of separately from regular household waste streams. It is your responsibility to dispose of this and other electric and electronic equipment via designated collection facilities appointed by the government or local authorities. Correct disposal and recycling will help prevent potential negative consequences to the environment and human health. For more detailed information about the disposal of your old equipment, please contact your local authorities, waste disposal service, or the shop where you purchased the product.


Български (Bulgarian) - Информация относно опазването на околната среда за потребители в Европейския съюз

Европейска директива 2002/96/EC изисква уредите, носещи този символ  върху изделието и/или опаковката му, да не се изхвърлят с несортирани битови отпадъци. Символът обозначава, че изделието трябва да се изхвърля отделно от сметосъбирането на обикновените битови отпадъци. Ваша е отговорността този и другите електрически и електронни уреди да се изхвърлят в предварително определени от държавните или общински органи специализирани пунктове за събиране. Правилното изхвърляне и рециклиране ще спомогнат да се предотвратят евентуални вредни за околната среда и здравето на населението последствия. За по-подробна информация относно изхвърлянето на вашите стари уреди се обърнете към местните власти, службите за сметосъбиране или магазина, от който сте закупили уреда.


Čeština (Czech) - Informace o ochraně životního prostředí pro zákazníky v zemích Evropské unie

Evropská směrnice 2002/96/ES zakazuje, aby zařízení označené tímto symbolem  na produktu anebo na obalu bylo likvidováno s netříděným komunálním odpadem. Tento symbol udává, že daný produkt musí být likvidován odděleně od běžného komunálního odpadu. Odpovídáte za likvidaci tohoto produktu a dalších elektrických a elektronických zařízení prostřednictvím určených sběrných míst stanovených vládou nebo místními úřady. Správná likvidace a recyklace pomáhá předcházet potenciálním negativním dopadům na životní prostředí a lidské zdraví. Podrobnější informace o likvidaci starého vybavení si laskavě vyžádejte od místních úřadů, podniku zabývajícího se likvidací komunálních odpadů nebo obchodu, kde jste produkt zakoupili.


Dansk (Danish) - Miljøinformation for kunder i EU

EU-direktiv 2002/96/EF kræver, at udstyr der bærer dette symbol  på produktet og/eller emballagen ikke må bortskaffes som usorteret kommunalt affald. Symbolet betyder, at dette produkt skal bortskaffes adskilt fra det almindelige husholdningsaffald. Det er dit ansvar at bortskaffe dette og andet elektrisk og elektronisk udstyr via bestemte indsamlingssteder udpeget af staten eller de lokale myndigheder. Korrekt bortskaffelse og genvinding vil hjælpe med til at undgå mulige skader for miljøet og menneskers sundhed. Kontakt venligst de lokale myndigheder, renovationstjenesten eller den butik, hvor du har købt produktet, angående mere detaljeret information om bortskaffelse af dit gamle udstyr.


Deutsch (German) - Umweltinformation für Kunden innerhalb der Europäischen Union

Die Europäische Richtlinie 2002/96/EC verlangt, dass technische Ausrüstung, die direkt am Gerät und/oder an der Verpackung mit diesem Symbol versehen ist , nicht zusammen mit unsortiertem Gemeindeabfall entsorgt werden darf. Das Symbol weist darauf hin, dass das Produkt von regulärem Haushaltsmüll getrennt entsorgt werden sollte. Es liegt in Ihrer Verantwortung, dieses Gerät und andere elektrische und elektronische Geräte über die dafür zuständigen und von der Regierung oder örtlichen Behörden dazu bestimmten Sammelstellen zu entsorgen. Ordnungsgemäßes Entsorgen und Recyceln trägt dazu bei, potentielle negative Folgen für Umwelt und die menschliche Gesundheit zu vermeiden. Wenn Sie weitere Informationen zur Entsorgung Ihrer Altgeräte benötigen, wenden Sie sich bitte an die örtlichen Behörden oder städtischen Entsorgungsdienste oder an den Händler, bei dem Sie das Produkt erworben haben.


Eesti (Estonian) - Keskkonnaalane informatsioon Euroopa Liidus asuvatele klientidele

Euroopa Liidu direktiivi 2002/96/EÜ nõuete kohaselt on seadmeid, millel on tootel või pakendil käesolev sümbol , keelatud kõrvaldada koos sorteerimata olmejäätmetega. See sümbol näitab, et toode tuleks kõrvaldada eraldi tavalistest olmejäätmevoogudest. Olete kohustatud kõrvaldama käesoleva ja ka muud elektri- ja elektroonikaseadmed riigi või kohalike ametiasutuste poolt ette nähtud kogumispunktide kaudu. Seadmete korrektne kõrvaldamine ja ringlussevõtt aitab vältida võimalikke negatiivseid tagajärgi keskkonnale ning inimeste tervisele. Vanade seadmete kõrvaldamise kohta täpsema informatsiooni saamiseks võtke palun ühendust kohalike ametiasutustega, jäätmekäitlusfirmaga või kauplusega, kust te toote ostsite.

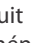
Español (Spanish) - Información medioambiental para clientes de la Unión Europea

La Directiva 2002/96/CE de la UE exige que los equipos que lleven este símbolo  en el propio aparato y/o en su embalaje no deben eliminarse junto con otros residuos urbanos no seleccionados. El símbolo indica que el producto en cuestión debe separarse de los residuos domésticos convencionales con vistas a su eliminación. Es responsabilidad suya desechar este y cualesquiera otros aparatos eléctricos y electrónicos a través de los puntos de recogida que ponen a su disposición el gobierno y las autoridades locales. Al desechar y reciclar correctamente estos aparatos estará contribuyendo a evitar posibles consecuencias negativas para el medio ambiente y la salud de las personas. Si desea obtener información más detallada sobre la eliminación segura de su aparato usado, consulte a las autoridades locales, al servicio de recogida y eliminación de residuos de su zona o pregunte en la tienda donde adquirió el producto.

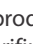
Ελληνικά (Greek) - Στοιχεία περιβαλλοντικής προστασίας για πελάτες εντός της Ευρωπαϊκής Ένωσης

Η Κοινοτική Οδηγία 2002/96/ΕΚ απαιτεί ότι ο εξοπλισμός ο οποίος φέρει αυτό το σύμβολο  στο προϊόν και/ή στη συσκευασία του δεν πρέπει να απορρίπτεται μαζί με τα μικτά κοινотικά απορρίμματα. Το σύμβολο υποδεικνύει ότι αυτό το προϊόν θα πρέπει να απορρίπτεται ξεχωριστά από τα συνήθη οικιακά απορρίμματα. Είστε υπεύθυνος για την απόρριψη του παρόντος και άλλου ηλεκτρικού και ηλεκτρονικού εξοπλισμού μέσω των καθορισμένων εγκαταστάσεων συγκέντρωσης απορριμμάτων οι οποίες παρέχονται από το κράτος ή τις αρμόδιες τοπικές αρχές. Η σωστή απόρριψη και ανακύκλωση συμβάλλει στην πρόληψη πιθανών αρνητικών συνεπειών για το περιβάλλον και την υγεία. Για περισσότερες πληροφορίες σχετικά με την απόρριψη του παλιού σας εξοπλισμού, παρακαλώ επικοινωνήστε με τις τοπικές αρχές, τις υπηρεσίες απόρριψης ή το κατάστημα από το οποίο αγοράσατε το προϊόν.

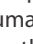
Français (French) - Informations environnementales pour les clients de l'Union européenne

La directive européenne 2002/96/CE exige que l'équipement sur lequel est apposé ce symbole  sur le produit et/ou son emballage ne soit pas jeté avec les autres ordures ménagères. Ce symbole indique que le produit doit être éliminé dans un circuit distinct de celui pour les déchets des ménages. Il est de votre responsabilité de jeter ce matériel ainsi que tout autre matériel électrique ou électronique par les moyens de collecte indiqués par le gouvernement et les pouvoirs publics des collectivités territoriales. L'élimination et le recyclage en bonne et due forme ont pour but de lutter contre l'impact néfaste potentiel de ce type de produits sur l'environnement et la santé publique. Pour plus d'informations sur le mode d'élimination de votre ancien équipement, veuillez prendre contact avec les pouvoirs publics locaux, le service de traitement des déchets, ou l'endroit où vous avez acheté le produit.


Italiano (Italian) - Informazioni relative all'ambiente per i clienti residenti nell'Unione Europea

La direttiva europea 2002/96/EC richiede che le apparecchiature contrassegnate con questo simbolo  sul prodotto e/o sull'imballaggio non siano smaltite insieme ai rifiuti urbani non differenziati. Il simbolo indica che questo prodotto non deve essere smaltito insieme ai normali rifiuti domestici. È responsabilità del proprietario smaltire sia questi prodotti sia le altre apparecchiature elettriche ed elettroniche mediante le specifiche strutture di raccolta indicate dal governo o dagli enti pubblici locali. Il corretto smaltimento ed il riciclaggio aiuteranno a prevenire conseguenze potenzialmente negative per l'ambiente e per la salute dell'essere umano. Per ricevere informazioni più dettagliate circa lo smaltimento delle vecchie apparecchiature in Vostro possesso, Vi invitiamo a contattare gli enti pubblici di competenza, il servizio di smaltimento rifiuti o il negozio nel quale avete acquistato il prodotto.


Latviešu valoda (Latvian) - Ekoloģiska informācija klientiem Eiropas Savienības jurisdikcijā

Direktīvā 2002/96/EK ir prasība, ka aprīkojumu, kam pievienota zīme  uz paša izstrādājuma vai uz tā iesaiņojuma, nedrīkst izmest nešķīrotā veidā kopā ar komunālajiem atkritumiem (tiem, ko rada vietēji iedzīvotāji un uzņēmumi). Šī zīme nozīmē to, ka šī ierīce ir jāizmet atkritumos tā, lai tā nenonāktu kopā ar parastiem mājsaimniecības atkritumiem. Jūsu pienākums ir šo un citas elektriskas un elektroniskas ierīces izmest atkritumos, izmantojot īpašus atkritumu savākšanas veidus un līdzekļus, ko nodrošina valsts un pašvaldību iestādes. Ja izmešana atkritumos un pārstrāde tiek veikta pareizi, tad mazinās iespējamais kaitējums dabai un cilvēku veselībai. Sīkākas ziņas par novecojuša aprīkojuma izmešanu atkritumos jūs varat saņemt vietējā pašvaldībā, atkritumu savākšanas dienestā, kā arī veikalā, kur iegādājāties šo izstrādājumu.


Lietuvškai (Lithuanian) - Aplinkosaugos informacija, skirta Europos Sąjungos vartotojams

Europos direktyva 2002/96/EC numato, kad įrangos, kuri ir  kurios pakuotė yra pažymėta šiuo simboliu (įveskite simbolį), negalima šalinti kartu su nerūšiuotomis komunalinėmis atliekomis. Šis simbolis rodo, kad gaminį reikia šalinti atskirai nuo bendro buitinių atliekų srauto. Jūs privalote užtikrinti, kad ši ir kita elektros ar elektroninė įranga būtų šalinama per tam tikras nacionalinės ar vietinės valdžios nustatytas atliekų rinkimo sistemas. Tinkamai šalinant ir perdirbant atliekas, bus išvengta galimos žalos aplinkai ir žmonių sveikatai. Daugiau informacijos apie jūsų senos įrangos šalinimą gali pateikti vietinės valdžios institucijos, atliekų šalinimo tarnybos arba parduotuvės, kuriose įsigijote tą gaminį.


Malti (Maltese) - Informazzjoni Ambjentali għal Kliġenti fl-Unjoni Ewropea

Id-Direttiva Ewropea 2002/96/KE titlob li t-tagħmir li jkun fi h is-simbolu  fuq il-prodott u/jew fuq l-ippakkjar ma jistax jintrema ma' skart municipali li ma għex isseparat. Is-simbolu jindika li dan il-prodott għandu jintrema separatament minn ma' l-iskart domestiku regolari. Hija responsabbiltà tiegħek li tarmi dan it-tagħmir u kull tagħmir ieħor ta' l-elettriku u elettroniku permezz ta' faċilitajiet ta' għbir appuntati apposta mill-gvern jew mill-awtoritajiet lokali. Ir-rimi b'mod korrett u r-riċiklaġġ jgħin jipprevjeni konsegwenzi negattivi potenzjali għall-ambjent u għas-saħħa tal-bniedem. Għal aktar informazzjoni dettaljata dwar ir-rimi tat-tagħmir antik tiegħek, jekk jogħġbok ikkuntattja lill-awtoritajiet lokali tiegħek, is-servizzi għar-rimi ta' l-iskart, jew il-hanut minn fejn xtrajt il-prodott.


Magyar (Hungarian) - Környezetvédelmi információ az európai uniós vásárlók számára

A 2002/96/EC számú európai uniós irányelv megkívánja, hogy azokat a termékeket, amelyeken, és/vagy amelyek csomagolásán az alábbi címke  megjelenik, tilos a többi szelektálatlan lakossági hulladékkal együtt kidobni. A címke azt jelöli, hogy az adott termék kidobásakor a szokványos háztartási hulladékészállítás rendszerektől elkülönített eljárást kell alkalmazni. Az Ön felelőssége, hogy ezt, és más elektromos és elektronikus berendezéseit a kormányzati vagy a helyi hatóságok által kijelölt gyűjtőredszereken keresztül számolja fel. A megfelelő hulladékfeldolgozás segít a környezetre és az emberi egészségre potenciálisan ártalmas negatív hatások megelőzésében. Ha elavult berendezéseinek felszámolásához további részletes információra van szüksége, kérjük, lépjen kapcsolatba a helyi hatóságokkal, a hulladékfeldolgozási szolgálattal, vagy azzal üzlettel, ahol a terméket vásárolta.

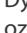
Nederlands (Dutch) - Milieu-informatie voor klanten in de Europese Unie

De Europese Richtlijn 2002/96/EC schrijft voor dat apparatuur die is voorzien van dit symbool  op het product of de verpakking, niet mag worden ingezameld met niet-gescheiden huishoudelijk afval. Dit symbool geeft aan dat het product apart moet worden ingezameld. U bent zelf verantwoordelijk voor de vernietiging van deze en andere elektrische en elektronische apparatuur via de daarvoor door de landelijke of plaatselijke overheid aangewezen inzamelingskanalen. De juiste vernietiging en recycling van deze apparatuur voorkomt mogelijke negatieve gevolgen voor het milieu en de gezondheid. Voor meer informatie over het vernietigen van uw oude apparatuur neemt u contact op met de plaatselijke autoriteiten of afvalverwerkingsdienst, of met de winkel waar u het product hebt aangeschaft.


Norsk (Norwegian) - Miljøinformasjon for kunder i EU

EU-direktiv 2002/96/EF krever at utstyr med følgende symbol  avbildet på produktet og/eller pakningen, ikke må kastes sammen med usortert avfall. Symbolet indikerer at dette produktet skal håndteres atskilt fra ordinær avfallsinnsamling for husholdningsavfall. Det er ditt ansvar å kvitte deg med dette produktet og annet elektrisk og elektronisk avfall via egne innsamlingsordninger slik myndighetene eller kommunene bestemmer. Korrekt avfallshåndtering og gjenvinning vil være med på å forhindre mulige negative konsekvenser for miljø og helse. For nærmere informasjon om håndtering av det kasserte utstyret ditt, kan du ta kontakt med kommunen, en innsamlingsstasjon for avfall eller butikken der du kjøpte produktet.


Polski (Polish) - Informacja dla klientów w Unii Europejskiej o przepisach dotyczących ochrony środowiska

Dyrektywa Europejska 2002/96/EC wymaga, aby sprzęt oznaczony symbolem  znajdującym się na produkcie i/lub jego opakowaniu nie był wyrzucany razem z innymi niesortowanymi odpadami komunalnymi. Symbol ten wskazuje, że produkt nie powinien być usuwany razem ze zwykłymi odpadami z gospodarstw domowych. Na Państwu spoczywa obowiązek wyrzucania tego i innych urządzeń elektrycznych oraz elektronicznych w punktach odbioru wyznaczonych przez władze krajowe lub lokalne. Pozbywanie się sprzętu we właściwy sposób i jego recykling pomogą zapobiec potencjalnie negatywnym konsekwencjom dla środowiska i zdrowia ludzkiego. W celu uzyskania szczegółowych informacji o usuwaniu starego sprzętu, prosimy zwrócić się do lokalnych władz, służb oczyszczania miasta lub sklepu, w którym produkt został nabyty.


Português (Portuguese) - Informação ambiental para clientes da União Europeia

A Directiva Europeia 2002/96/CE exige que o equipamento que exibe este símbolo  no produto e/ou na sua embalagem não seja eliminado junto com os resíduos municipais não separados. O símbolo indica que este produto deve ser eliminado separadamente dos resíduos domésticos regulares. É da sua responsabilidade eliminar este e qualquer outro equipamento eléctrico e electrónico através das instalações de recolha designadas pelas autoridades governamentais ou locais. A eliminação e reciclagem correctas ajudarão a prevenir as consequências negativas para o ambiente e para a saúde humana. Para obter informações mais detalhadas sobre a forma de eliminar o seu equipamento antigo, contacte as autoridades locais, os serviços de eliminação de resíduos ou o estabelecimento comercial onde adquiriu o produto.


Română (Romanian) - Informații de mediu pentru clienții din Uniunea Europeană

Directiva europeană 2002/96/CE impune ca echipamentele care prezintă acest simbol  pe produs și/sau pe ambalajul acestuia să nu fie casate împreună cu gunoiul menajer municipal. Simbolul indică faptul că acest produs trebuie să fie casat separat de gunoiul menajer obișnuit. Este responsabilitatea dvs. să cașiți acest produs și alte echipamente electrice și electronice prin intermediul unităților de colectare special desemnate de guvern sau de autoritățile locale. Casarea și reciclarea corecte vor ajuta la prevenirea potențialelor consecințe negative asupra sănătății mediului și a oamenilor. Pentru mai multe informații detaliate cu privire la casarea acestui echipament vechi, contactați autoritățile locale, serviciul de salubritate sau magazinul de la care ați achiziționat produsul.


Slovenčina (Slovak) - Informácie o ochrane životného prostredia pre zákazníkov v Európskej únii

Podľa európskej smernice 2002/96/ES zariadenie s týmto symbolom  na produkte a/alebo jeho balení nesmie byť likvidované spolu s netriedeným komunálnym odpadom. Symbol znamená, že produkt by sa mal likvidovať oddelene od bežného odpadu z domácností. Je vašou povinnosťou likvidovať toto i ostatné elektrické a elektronické zariadenia prostredníctvom špecializovaných zberných zariadení určených vládou alebo miestnymi orgánmi. Správna likvidácia a recyklácia pomôže zabrániť prípadným negatívnym dopadom na životné prostredie a zdravie ľudí. Ak máte záujem o podrobnejšie informácie o likvidácii starého zariadenia, obráťte sa, prosím, na miestne orgány, organizácie zaoberajúce sa likvidáciou odpadov alebo obchod, v ktorom ste si produkt zakúpili.


Slovenčina (Slovene) - Okoljske informacije za stranke v Evropski uniji

Evropska direktiva 2002/96/EC prepoveduje odlaganje opreme, označene s tem simbolom  – na izdelku in/ali na embalaži – med običajne, nerazvrščene odpadke. Ta simbol opozarja, da je treba izdelek odvreči ločeno od preostalih gospodinjskih odpadkov. Vaša odgovornost je, da to in preostalo električno in elektronsko opremo odnesete na posebna zbirališča, ki jih določijo državne ustanove ali lokalna uprava. S pravilnim odlaganjem in recikliranjem boste preprečili morebitne škodljive vplive na okolje in zdravje ljudi. Če želite izvedeti več o odlaganju stare opreme, se obrnite na lokalno upravo, odpad ali trgovino, kjer ste izdelek kupili.

Suomi (Finnish) - Ympäristöä koskevia tietoja EU-alueen asiakkaille

EU-direktiivi 2002/96/EY edellyttää, että jos laitteistossa on tämä symboli  itse tuotteessa ja/tai sen pakkauksessa, laitteistoa ei saa hävittää lajittelemattoman yhdyskuntajätteen mukana. Symboli merkitsee sitä, että tämä tuote on hävitettävä erillään tavallisesta kotitalousjätteestä. Sinun vastuullasi on hävittää tämä elektroniikkatuote ja muut vastaavat elektroniikkatuotteet viemällä tuote tai tuotteet viranomaisten määräämään keräyspisteeseen. Laitteiston oikea hävittäminen estää mahdolliset kielteiset vaikutukset ympäristöön ja ihmisten terveyteen. Lisätietoja vanhan laitteiston oikeasta hävitystavasta saa paikallisilta viranomaisilta, jätteenhävityspalvelusta tai siitä myymälästä, josta ostit tuotteen.

Svenska (Swedish) - Miljöinformation för kunder i Europeiska unionen

Det europeiska direktivet 2002/96/EC kräver att utrustning med denna symbol  på produkten och/eller förpackningen inte får kastas med osorterat kommunalt avfall. Symbolen visar att denna produkt bör kastas efter att den avskiljts från vanligt hushållsavfall. Det faller på ditt ansvar att kasta denna och annan elektrisk och elektronisk utrustning på fastställda samlingsplatser utsedda av regeringen eller lokala myndigheter. Korrekt kassering och återvinning skyddar mot eventuella negativa konsekvenser för miljön och personhälsa. För mer detaljerad information om kassering av din gamla utrustning kontaktar du dina lokala myndigheter, avfallshanteringen eller butiken där du köpte produkten.



WEB: For additional information, please visit www.linksys.com