



REPUBLIC OF
GAMERS

P704 ROG CHAKRAM

USER GUIDE

quick start guide

快速使用手冊

快速用戶手冊

Guia de Início Rápido

stručná příručka

beknopte handleiding

pikaopas

guide de démarrage rapide

Schnellstartanleitung

Gyors üzembehelyezési útmutató

Guida rapida

hurtigstartguide

skrótowa instrukcja obsługi

ghid de pornire rapidă

quick start guide

guía de inicio rápido

snabbstartguide

posібник із швидкого початку роботи

دليل التشغيل السريع

クイックスタートガイド

빠른 시작 설명서

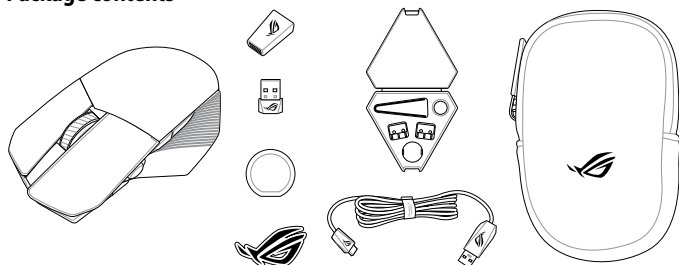
hızlı başlatma klavuzu

ASUS

Contents

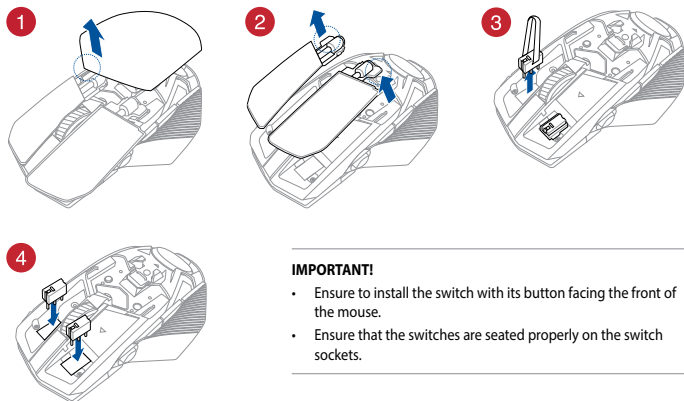
<i>Package contents</i>	4
<i>Replacing the switches</i>	4
<i>Storing the USB dongle</i>	4
<i>Replacing the Logo Plate</i>	4
English	5
Traditional Chinese	8
Simplified Chinese	10
Japanese	12
Korean	14
Fench	16
German	18
Italian	20
Spanish	22
Brazilian Portugese	24
Russian	26
Czech	28
Dutch	30
Finnish	32
Hungarian	34
Norwegian	36
Polish	38
Romanian	40
Swedish	42
Ukranian	44
Arabic	46
Turkish	48
Slovakian	50
<i>Notices</i>	52
<i>Warranty Form</i>	59

Package contents

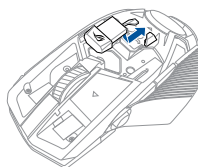


Replacing the switches

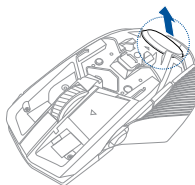
NOTE: Refer to www.asus.com for the list of compatible switches.



Storing the USB dongle

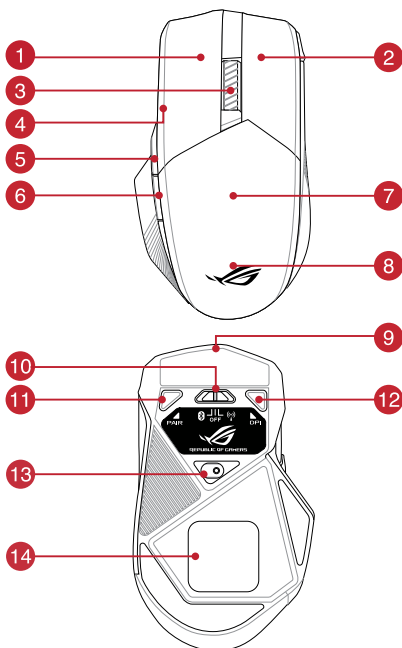


Replacing the Logo Plate



Device features

- 1 Left button
- 2 Right button
- 3 Scroll wheel
- 4 Analogue stick (hidden)
- 5 Forward button
- 6 Backward button
- 7 USB dongle (hidden)
- 8 Logo plate (hidden)
- 9 USB Type-C™
- 10 Connection mode switch
- 11 Pairing button
- 12 DPI button
- 13 Optical sensor
- 14 Qi wireless charging area



Connecting your gaming mouse

Setting up your gaming mouse as a wired mouse

Connect the bundled USB Type-C™ to Type-A cable to your gaming mouse and a USB port on your computer

Setting up your gaming mouse as a RF wireless mouse

1. Connect the USB dongle to a USB port on your computer.
2. Set the connection switch to the **RF 2.4G Wireless mode**.



Setting up your gaming mouse as a Bluetooth wireless mouse

Set the connection switch to the **Bluetooth mode**.

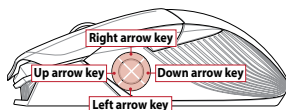


NOTE: To pair your gaming mouse to a different device, press and hold the **Pairing button** for 3 seconds until the LEDs on your gaming mouse start to blink blue. Once your gaming mouse has been successfully paired, the LED indicator on your gaming mouse will light up blue for 3 seconds.

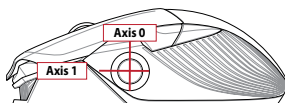
Gaming mouse profiles

NOTE: The mouse buttons and analogue stick can be assigned to other functions using ROG Armoury II.

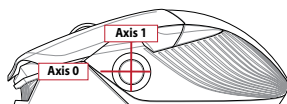
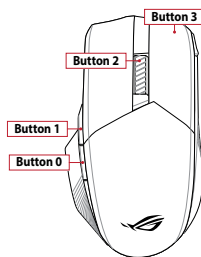
Profile	Default lighting effect	Default function
Profile 1	11 + 6	Wave



Profile	Default lighting effect	Default function
Profile 2	11 + 5	Color cycle



Profile	Default lighting effect	Default function
Profile 3	11 + 3	Comet (blue)



Mapping your gaming mouse as a gamepad for Steam

You can setup your gaming mouse as a gamepad for Steam using the gamepad profile (defaulted to Profile 3).

NOTE: You may customize your gamepad profile or reset it to the default Profile 3 using ROG Armoury II.

1. Connect your gaming mouse to your computer.
2. Launch Steam, then go to **Settings > Controller > GENERAL CONTROLLER SETTINGS**.
3. Switch your gaming mouse profile to your gamepad profile (defaulted to Profile 3).
4. Check the **Xbox Configuration Support** and **Generic Gamepad Configuration Support** options.
5. Under **Detected Controllers**, select **ROG CHAKRAM : Generic Gamepad**.
6. Map the **Backward button**, **Forward button**, **Scroll wheel click**, and **Right button** on your gaming mouse to the **Primary Action**, **Go back**, **Tertiary**, and **Secondary Action** commands.
7. Map the x-axis and y-axis of the **Analogue stick** to the **Left Stick X** and **Left Stick Y** commands.
8. Press **Esc** on your keyboard, then click **SAVE** to complete.

Specifications*

Resolution	DPI 1	DPI 2	DPI 3 (Default)	DPI 4
100 DPI to 16000 DPI	400 DPI	800 DPI	1600 DPI	3200 DPI

* You may customize the DPI settings for DPI 1-4 through Armoury II or the DPI on-the-fly tuning function.

Using the DPI on-the-fly tuning function

The DPI on-the-fly tuning function allows you to customize the DPI of your gaming mouse without using Armoury II.

1. Press and hold the DPI button for 3 seconds until the LEDs on your gaming mouse light up.
2. Scroll the scroll wheel forwards or backwards to adjust the DPI. The LED color hue on your scroll wheel will differ depending on the DPI adjustment.

NOTE:

- The DPI increments at 100 DPI per scroll forwards and decrements at 100 DPI per scroll backwards.
- The DPI ranges from 100 DPI (blue) to 16000 DPI (red).

3. Press the DPI button once you have finished customizing the DPI value to save the changes made.

Battery Status

The LEDs on your gaming mouse will turn **red (breathing)** when the battery power is below 25% in Bluetooth or RF 2.4G mode. You may charge your gaming mouse by using the bundled USB cable or any Qi wireless charger.

Updating the firmware and customization

1. Connect your gaming mouse to your computer using the bundled cable.
2. Download and install the Armoury II software from https://www.asus.com/Keyboards-Mice/ROG-Chakram/HelpDesk_Download.
3. Follow the software instructions to update your gaming mouse's firmware.
4. Customize your gaming mouse using Armoury II.

Device features

- | | | | |
|---|-------------------------|----|---------------------------|
| 1 | Left button | 8 | Logo plate (hidden) |
| 2 | Right button | 9 | USB Type-C™ |
| 3 | Scroll wheel | 10 | Connection mode switch |
| 4 | Analogue stick (hidden) | 11 | Pairing button |
| 5 | Forward button | 12 | DPI button |
| 6 | Backward button | 13 | Optical sensor |
| 7 | USB dongle (hidden) | 14 | Qi wireless charging area |

Connecting your gaming mouse

Setting up your gaming mouse as a wired mouse

Connect the bundled USB Type-C™ to Type-A cable to your gaming mouse and a USB port on your computer

Setting up your gaming mouse as a RF wireless mouse

1. Connect the USB dongle to a USB port on your computer.
2. Set the connection switch to the **RF 2.4G Wireless mode**.

Setting up your gaming mouse as a Bluetooth wireless mouse

Set the connection switch to the **Bluetooth mode**.

NOTE: To pair your gaming mouse to a different device, press and hold the **Pairing button** for 3 seconds until the LEDs on your gaming mouse start to blink blue. Once your gaming mouse has been successfully paired, the LED indicator on your gaming mouse will light up blue for 3 seconds.

Gaming mouse profiles

Profile		Default lighting effect	Default function
Profile 1	11 + 6	Wave	Mouse and 4 keyboard direction keys
Profile 2	11 + 5	Color cycle	Mouse and analogue stick
Profile 3	11 + 3	Comet (blue)	Gamepad

Mapping your gaming mouse as a gamepad for Steam

You can setup your gaming mouse as a gamepad for Steam using the gamepad profile (defaulted to Profile 3).

NOTE: You may customize your gamepad profile or reset it to the default Profile 3 using ROG Armoury II.

1. Connect your gaming mouse to your computer.
2. Launch Steam, then go to **Settings > Controller > GENERAL CONTROLLER SETTINGS**.
3. Switch your gaming mouse profile to your gamepad profile (defaulted to Profile 3).
4. Check the **Xbox Configuration Support** and **Generic Gamepad Configuration Support** options.
5. Under **Detected Controllers**, select **ROG CHAKRAM : Generic Gamepad**.
6. Map the **Backward button**, **Forward button**, **Scroll wheel** click, and **Right button** on your gaming mouse to the **Primary Action**, **Go back**, **Tertiary**, and **Secondary Action** commands.
7. Map the x-axis and y-axis of the **Analogue stick** to the **Left Stick X** and **Left Stick Y** commands.
8. Press **Esc** on your keyboard, then click **SAVE** to complete.

Specifications*

Resolution	DPI 1	DPI 2	DPI 3 (Default)	DPI 4
100 DPI to 16000 DPI	400 DPI	800 DPI	1600 DPI	3200 DPI

* You may customize the DPI settings for DPI 1-4 through Armoury II or the DPI on-the-fly tuning function.

Using the DPI on-the-fly tuning function

The DPI on-the-fly tuning function allows you to customize the DPI of your gaming mouse without using Armoury II.

1. Press and hold the DPI button for 3 seconds until the LEDs on your gaming mouse light up.
2. Scroll the scroll wheel forwards or backwards to adjust the DPI. The LED color hue on your scroll wheel will differ depending on the DPI adjustment.

NOTE:

- The DPI increments at 100 DPI per scroll forwards and decrements at 100 DPI per scroll backwards.
- The DPI ranges from 100 DPI (blue) to 16000 DPI (red).

3. Press the DPI button once you have finished customizing the DPI value to save the changes made.

Battery Status

The LEDs on your gaming mouse will turn **red (breathing)** when the battery power is below 25% in Bluetooth or RF 2.4G mode. You may charge your gaming mouse by using the bundled USB cable or any Qi wireless charger.

Updating the firmware and customization

1. Connect your gaming mouse to your computer using the bundled cable.
2. Download and install the Armoury II software from https://www.asus.com/Keyboards-Mice/ROG-Chakram/HelpDesk_Download.
3. Follow the software instructions to update your gaming mouse's firmware.
4. Customize your gaming mouse using Armoury II.

Device features

- | | |
|---------------------------|--------------------------|
| 1 Left button | 7 USB dongle (hidden) |
| 2 Right button | 8 Logo plate (hidden) |
| 3 Scroll wheel | 9 Connection mode switch |
| 4 Analogue stick (hidden) | 10 Pairing button |
| 5 Forward button | 11 DPI button |
| 6 Backward button | 12 Optical sensor |

Connecting your gaming mouse

Setting up your gaming mouse as a wired mouse

Connect the bundled USB Type-C™ to Type-A cable to your gaming mouse and a USB port on your computer.

Setting up your gaming mouse as a RF wireless mouse

1. Connect the USB dongle to a USB port on your computer.
2. Set the connection switch to the **RF 2.4G Wireless mode**.

Setting up your gaming mouse as a Bluetooth wireless mouse

Set the connection switch to the **Bluetooth mode**.

NOTE: To pair your gaming mouse to a different device, press and hold the **Pairing button** for 3 seconds until the LEDs on your gaming mouse start to blink blue. Once your gaming mouse has been successfully paired, the LED indicator on your gaming mouse will light up blue for 3 seconds.

Gaming mouse profiles

Profile		Default lighting effect	Default function
Profile 1	11 + 6	Wave	Mouse and 4 keyboard direction keys
Profile 2	11 + 5	Color cycle	Mouse and analogue stick
Profile 3	11 + 3	Comet (blue)	Gamepad

Mapping your gaming mouse as a gamepad for Steam

You can setup your gaming mouse as a gamepad for Steam using the gamepad profile (defaulted to Profile 3).

NOTE: You may customize your gamepad profile or reset it to the default Profile 3 using ROG Armoury II.

1. Connect your gaming mouse to your computer.
2. Launch Steam, then go to **Settings > Controller > GENERAL CONTROLLER SETTINGS**.
3. Switch your gaming mouse profile to your gamepad profile (defaulted to Profile 3).
4. Check the **Xbox Configuration Support** and **Generic Gamepad Configuration Support** options.
5. Under **Detected Controllers**, select **ROG CHAKRAM : Generic Gamepad**.
6. Map the **Backward button**, **Forward button**, **Scroll wheel** click, and **Right button** on your gaming mouse to the **Primary Action**, **Go back**, **Tertiary**, and **Secondary Action** commands.
7. Map the x-axis and y-axis of the **Analogue stick** to the **Left Stick X** and **Left Stick Y** commands.
8. Press **Esc** on your keyboard, then click **SAVE** to complete.

Specifications*

Resolution	DPI 1	DPI 2	DPI 3 (Default)	DPI 4
100 DPI to 16000 DPI	400 DPI	800 DPI	1600 DPI	3200 DPI

* You may customize the DPI settings for DPI 1-4 through Armoury II or the DPI on-the-fly tuning function.

Using the DPI on-the-fly tuning function

The DPI on-the-fly tuning function allows you to customize the DPI of your gaming mouse without using Armoury II.

1. Press and hold the DPI button for 3 seconds until the LEDs on your gaming mouse light up.
2. Scroll the scroll wheel forwards or backwards to adjust the DPI. The LED color hue on your scroll wheel will differ depending on the DPI adjustment.

NOTE:

- The DPI increments at 100 DPI per scroll forwards and decrements at 100 DPI per scroll backwards.
- The DPI ranges from 100 DPI (blue) to 16000 DPI (red).

3. Press the DPI button once you have finished customizing the DPI value to save the changes made.

Battery Status

The LEDs on your gaming mouse will turn **red (breathing)** when the battery power is below 25% in Bluetooth or RF 2.4G mode. You may charge your gaming mouse by using the bundled USB cable.

Updating the firmware and customization

1. Connect your gaming mouse to your computer using the bundled cable.
2. Download and install the Armoury II software from https://www.asus.com/Keyboards-Mice/ROG-Chakram/HelpDesk_Download.
3. Follow the software instructions to update your gaming mouse's firmware.
4. Customize your gaming mouse using Armoury II.

Device features

- | | |
|---------------------------|--------------------------|
| 1 Left button | 7 USB dongle (hidden) |
| 2 Right button | 8 Logo plate (hidden) |
| 3 Scroll wheel | 9 Connection mode switch |
| 4 Analogue stick (hidden) | 10 Pairing button |
| 5 Forward button | 11 DPI button |
| 6 Backward button | 12 Optical sensor |

Connecting your gaming mouse

Setting up your gaming mouse as a wired mouse

Connect the bundled USB Type-C™ to Type-A cable to your gaming mouse and a USB port on your computer.

Setting up your gaming mouse as a RF wireless mouse

1. Connect the USB dongle to a USB port on your computer.
2. Set the connection switch to the **RF 2.4G Wireless mode**.

Setting up your gaming mouse as a Bluetooth wireless mouse

Set the connection switch to the **Bluetooth mode**.

NOTE: To pair your gaming mouse to a different device, press and hold the **Pairing button** for 3 seconds until the LEDs on your gaming mouse start to blink blue. Once your gaming mouse has been successfully paired, the LED indicator on your gaming mouse will light up blue for 3 seconds.

Gaming mouse profiles

Profile		Default lighting effect	Default function
Profile 1	11 + 6	Wave	Mouse and 4 keyboard direction keys
Profile 2	11 + 5	Color cycle	Mouse and analogue stick
Profile 3	11 + 3	Comet (blue)	Gamepad

Mapping your gaming mouse as a gamepad for Steam

You can setup your gaming mouse as a gamepad for Steam using the gamepad profile (defaulted to Profile 3).

NOTE: You may customize your gamepad profile or reset it to the default Profile 3 using ROG Armoury II.

1. Connect your gaming mouse to your computer.
2. Launch Steam, then go to **Settings > Controller > GENERAL CONTROLLER SETTINGS**.
3. Switch your gaming mouse profile to your gamepad profile (defaulted to Profile 3).
4. Check the **Xbox Configuration Support** and **Generic Gamepad Configuration Support** options.
5. Under **Detected Controllers**, select **ROG CHAKRAM : Generic Gamepad**.
6. Map the **Backward button**, **Forward button**, **Scroll wheel** click, and **Right button** on your gaming mouse to the **Primary Action**, **Go back**, **Tertiary**, and **Secondary Action** commands.
7. Map the x-axis and y-axis of the **Analogue stick** to the **Left Stick X** and **Left Stick Y** commands.
8. Press **Esc** on your keyboard, then click **SAVE** to complete.

Specifications*

Resolution	DPI 1	DPI 2	DPI 3 (Default)	DPI 4
100 DPI to 16000 DPI	400 DPI	800 DPI	1600 DPI	3200 DPI

* You may customize the DPI settings for DPI 1-4 through Armoury II or the DPI on-the-fly tuning function.

Using the DPI on-the-fly tuning function

The DPI on-the-fly tuning function allows you to customize the DPI of your gaming mouse without using Armoury II.

1. Press and hold the DPI button for 3 seconds until the LEDs on your gaming mouse light up.
2. Scroll the scroll wheel forwards or backwards to adjust the DPI. The LED color hue on your scroll wheel will differ depending on the DPI adjustment.

NOTE:

- The DPI increments at 100 DPI per scroll forwards and decrements at 100 DPI per scroll backwards.
- The DPI ranges from 100 DPI (blue) to 16000 DPI (red).

3. Press the DPI button once you have finished customizing the DPI value to save the changes made.

Battery Status

The LEDs on your gaming mouse will turn **red (breathing)** when the battery power is below 25% in Bluetooth or RF 2.4G mode. You may charge your gaming mouse by using the bundled USB cable.

Updating the firmware and customization

1. Connect your gaming mouse to your computer using the bundled cable.
2. Download and install the Armoury II software from https://www.asus.com/Keyboards-Mice/ROG-Chakram/HelpDesk_Download.
3. Follow the software instructions to update your gaming mouse's firmware.
4. Customize your gaming mouse using Armoury II.

Device features

- | | |
|---------------------------|--------------------------|
| 1 Left button | 7 USB dongle (hidden) |
| 2 Right button | 8 Logo plate (hidden) |
| 3 Scroll wheel | 9 Connection mode switch |
| 4 Analogue stick (hidden) | 10 Pairing button |
| 5 Forward button | 11 DPI button |
| 6 Backward button | 12 Optical sensor |

Connecting your gaming mouse

Setting up your gaming mouse as a wired mouse

Connect the bundled USB Type-C™ to Type-A cable to your gaming mouse and a USB port on your computer

Setting up your gaming mouse as a RF wireless mouse

1. Connect the USB dongle to a USB port on your computer.
2. Set the connection switch to the **RF 2.4G Wireless mode**.

Setting up your gaming mouse as a Bluetooth wireless mouse

Set the connection switch to the **Bluetooth mode**.

NOTE: To pair your gaming mouse to a different device, press and hold the **Pairing button** for 3 seconds until the LEDs on your gaming mouse start to blink blue. Once your gaming mouse has been successfully paired, the LED indicator on your gaming mouse will light up blue for 3 seconds.

Gaming mouse profiles

Profile		Default lighting effect	Default function
Profile 1	11 + 6	Wave	Mouse and 4 keyboard direction keys
Profile 2	11 + 5	Color cycle	Mouse and analogue stick
Profile 3	11 + 3	Comet (blue)	Gamepad

Mapping your gaming mouse as a gamepad for Steam

You can setup your gaming mouse as a gamepad for Steam using the gamepad profile (defaulted to Profile 3).

NOTE: You may customize your gamepad profile or reset it to the default Profile 3 using ROG Armoury II.

1. Connect your gaming mouse to your computer.
2. Launch Steam, then go to **Settings > Controller > GENERAL CONTROLLER SETTINGS**.
3. Switch your gaming mouse profile to your gamepad profile (defaulted to Profile 3).
4. Check the **Xbox Configuration Support** and **Generic Gamepad Configuration Support** options.
5. Under **Detected Controllers**, select **ROG CHAKRAM : Generic Gamepad**.
6. Map the **Backward button**, **Forward button**, **Scroll wheel** click, and **Right button** on your gaming mouse to the **Primary Action**, **Go back**, **Tertiary**, and **Secondary Action** commands.
7. Map the x-axis and y-axis of the **Analogue stick** to the **Left Stick X** and **Left Stick Y** commands.
8. Press **Esc** on your keyboard, then click **SAVE** to complete.

Specifications*

Resolution	DPI 1	DPI 2	DPI 3 (Default)	DPI 4
100 DPI to 16000 DPI	400 DPI	800 DPI	1600 DPI	3200 DPI

* You may customize the DPI settings for DPI 1-4 through Armoury II or the DPI on-the-fly tuning function.

Using the DPI on-the-fly tuning function

The DPI on-the-fly tuning function allows you to customize the DPI of your gaming mouse without using Armoury II.

1. Press and hold the DPI button for 3 seconds until the LEDs on your gaming mouse light up.
2. Scroll the scroll wheel forwards or backwards to adjust the DPI. The LED color hue on your scroll wheel will differ depending on the DPI adjustment.

NOTE:

- The DPI increments at 100 DPI per scroll forwards and decrements at 100 DPI per scroll backwards.
- The DPI ranges from 100 DPI (blue) to 16000 DPI (red).

3. Press the DPI button once you have finished customizing the DPI value to save the changes made.

Battery Status

The LEDs on your gaming mouse will turn **red (breathing)** when the battery power is below 25% in Bluetooth or RF 2.4G mode. You may charge your gaming mouse by using the bundled USB cable.

Updating the firmware and customization

1. Connect your gaming mouse to your computer using the bundled cable.
2. Download and install the Armoury II software from https://www.asus.com/Keyboards-Mice/ROG-Chakram/HelpDesk_Download.
3. Follow the software instructions to update your gaming mouse's firmware.
4. Customize your gaming mouse using Armoury II.

Device features

- | | |
|---------------------------|--------------------------|
| 1 Left button | 7 USB dongle (hidden) |
| 2 Right button | 8 Logo plate (hidden) |
| 3 Scroll wheel | 9 Connection mode switch |
| 4 Analogue stick (hidden) | 10 Pairing button |
| 5 Forward button | 11 DPI button |
| 6 Backward button | 12 Optical sensor |

Connecting your gaming mouse

Setting up your gaming mouse as a wired mouse

Connect the bundled USB Type-C™ to Type-A cable to your gaming mouse and a USB port on your computer.

Setting up your gaming mouse as a RF wireless mouse

1. Connect the USB dongle to a USB port on your computer.
2. Set the connection switch to the **RF 2.4G Wireless mode**.

Setting up your gaming mouse as a Bluetooth wireless mouse

Set the connection switch to the **Bluetooth mode**.

NOTE: To pair your gaming mouse to a different device, press and hold the **Pairing button** for 3 seconds until the LEDs on your gaming mouse start to blink blue. Once your gaming mouse has been successfully paired, the LED indicator on your gaming mouse will light up blue for 3 seconds.

Gaming mouse profiles

Profile		Default lighting effect	Default function
Profile 1	11 + 6	Wave	Mouse and 4 keyboard direction keys
Profile 2	11 + 5	Color cycle	Mouse and analogue stick
Profile 3	11 + 3	Comet (blue)	Gamepad

Mapping your gaming mouse as a gamepad for Steam

You can setup your gaming mouse as a gamepad for Steam using the gamepad profile (defaulted to Profile 3).

NOTE: You may customize your gamepad profile or reset it to the default Profile 3 using ROG Armoury II.

1. Connect your gaming mouse to your computer.
2. Launch Steam, then go to **Settings > Controller > GENERAL CONTROLLER SETTINGS**.
3. Switch your gaming mouse profile to your gamepad profile (defaulted to Profile 3).
4. Check the **Xbox Configuration Support** and **Generic Gamepad Configuration Support** options.
5. Under **Detected Controllers**, select **ROG CHAKRAM : Generic Gamepad**.
6. Map the **Backward button**, **Forward button**, **Scroll wheel** click, and **Right button** on your gaming mouse to the **Primary Action**, **Go back**, **Tertiary**, and **Secondary Action** commands.
7. Map the x-axis and y-axis of the **Analogue stick** to the **Left Stick X** and **Left Stick Y** commands.
8. Press **Esc** on your keyboard, then click **SAVE** to complete.

Specifications*

Resolution	DPI 1	DPI 2	DPI 3 (Default)	DPI 4
100 DPI to 16000 DPI	400 DPI	800 DPI	1600 DPI	3200 DPI

* You may customize the DPI settings for DPI 1-4 through Armoury II or the DPI on-the-fly tuning function.

Using the DPI on-the-fly tuning function

The DPI on-the-fly tuning function allows you to customize the DPI of your gaming mouse without using Armoury II.

1. Press and hold the DPI button for 3 seconds until the LEDs on your gaming mouse light up.
2. Scroll the scroll wheel forwards or backwards to adjust the DPI. The LED color hue on your scroll wheel will differ depending on the DPI adjustment.

NOTE:

- The DPI increments at 100 DPI per scroll forwards and decrements at 100 DPI per scroll backwards.
- The DPI ranges from 100 DPI (blue) to 16000 DPI (red).

3. Press the DPI button once you have finished customizing the DPI value to save the changes made.

Battery Status

The LEDs on your gaming mouse will turn **red (breathing)** when the battery power is below 25% in Bluetooth or RF 2.4G mode. You may charge your gaming mouse by using the bundled USB cable.

Updating the firmware and customization

1. Connect your gaming mouse to your computer using the bundled cable.
2. Download and install the Armoury II software from https://www.asus.com/Keyboards-Mice/ROG-Chakram/HelpDesk_Download.
3. Follow the software instructions to update your gaming mouse's firmware.
4. Customize your gaming mouse using Armoury II.