

## Use This Computer as a Speakerphone for a Bluetooth Cell Phone

### To use this computer as a speakerphone for a cell phone

1. Open **My Bluetooth Places**, and then click **Bluetooth Setup Wizard**.
2. Click **I know the service I want to use and I want to find a Bluetooth device that provides that service**, and then click **Next**.
3. Click **Audio Gateway** in the **Bluetooth Service Selection** list, and then click **Next**.
4. In the **Bluetooth Device Selection** list, click the **Cell Phone** icon, and then click **Next**.
5. Click **Finish**.

You can now use this computer as a speakerphone for the cell phone.

---

## **Set Up This Computer to Receive Image Files Sent from a Bluetooth Camera, Cell Phone, or Other Bluetooth Device**

To set up this computer to receive image files sent from a Bluetooth camera, cell phone, or other Bluetooth device

1. Open **My Bluetooth Places**.
2. Click **View or modify configuration**.
3. Click the **Local Services** tab.
4. Click **Bluetooth Imaging** in the list of services, and then click **Properties**.
5. Verify that the **Startup automatically** check box is selected.

You can now receive image files. Refer to the manual that came with your Bluetooth camera, cell phone, or other Bluetooth device for instructions on how to send image files to a Bluetooth-enabled computer. The received files are stored in the Bluetooth Exchange Folder on this computer.

---

## Send Files or Folders on This Computer to Another Bluetooth Device

To send files on this computer to another Bluetooth device

1. Verify that File Transfer service is enabled on the target Bluetooth device (see [Access Files on Another Bluetooth Device from This Computer](#)).
2. In **Windows Explorer**, open the folder where the file you want to send is located.
3. Right-click the file name, point to **Send To**, point to **Bluetooth**, and then click the name of the target Bluetooth device.

To send folders on this computer to another Bluetooth device

1. Open **My Bluetooth Places**.
2. Click **View devices in range**.
3. Open **Windows Explorer** and browse to where the folder you want to send is located.
4. Copy or drag-and-drop the folder to the target device name in **Entire Bluetooth Neighborhood**.

 **NOTE:** When you send folders to another Bluetooth device, if the **Secure connection** property of the File Transfer service of the other Bluetooth device has been set, the operator of the other Bluetooth device must be available to allow access unless the **Always allow this device access to my computer's File Transfer service** check box in **Bluetooth File Transfer Authorization** is selected. Otherwise, the file transfer fails.

The sent files or folders are located in the Bluetooth Exchange Folder on the target Bluetooth device.

---

## Send Files from Microsoft Office Applications

To send a file from a Microsoft Office application

1. From this computer, start the Microsoft Office application.
2. Open the file you want to send.
3. From the **File** menu, point to **Send To**, point to **Bluetooth**, and then click the name of the target device.

-or-

Click **Other**, click the device name in the **Select Device** list, and then click **OK**.

---

## Send a Web Page from Microsoft Internet Explorer

To send a web page from Microsoft Internet Explorer

1. Open **Internet Explorer** and browse to the web page you want to send.
  2. Click the **Send To Bluetooth** icon on the toolbar.
  3. Follow the instructions in the **Send To Bluetooth Wizard**.
-

## Send an Image from Microsoft Internet Explorer


To send a selected image from Microsoft Internet Explorer

1. Right-click the image to be transferred, and then click **Send To Bluetooth Device**.
  2. In **Select Device**, click the device name, and then click **OK**.
-

## Connect to the Internet Using a Bluetooth Telephone, Modem, or Other Bluetooth Device That Offers Dial-up Networking Service

To connect to the Internet using a Bluetooth telephone, modem, or other Bluetooth device that offers dial-up networking service

1. From this computer, open **My Bluetooth Places**.
2. Click **Bluetooth Setup Wizard**.
3. Click **I know the service I want to use and I want to find a Bluetooth device that provides that service**, and then click **Next**.
4. Click **Dial-up Networking** in the **Bluetooth Service Selection** list, and then click **Next**.
5. In **Bluetooth Device Selection**, click the name of the device you want to connect with, and then click **Next**.
6. Click **Finish**.
7. If your mobile service operator requires you to supply your user name and password, type them in the spaces provided.
8. Type *the number of your Internet service provider* in the **Dial** box, and then click **Dial**.

 **NOTE:** For typical GPRS connections, you can normally leave the **User name** and **Password** boxes blank and use **99#** as a phone number.

9. Respond to the authorization messages that appear on the remote device.

To disconnect the dial-up networking connection

1. From this computer, open **My Bluetooth Places**.

 **NOTE:** If there is a **Dial-up Networking** shortcut in **My Bluetooth Places**, skip to step 4.

2. Click **View devices in range**.
  3. Double-click the name of the device you established a dial-up networking connection with.
  4. Right-click **Dial-up Networking**, and then click **Disconnect Dial-up Networking**.
-

## Use the Fax Capabilities of a Bluetooth Telephone, Modem, or Other Remote Bluetooth Device That Offers Fax Service

To use the fax capabilities of a Bluetooth telephone, modem, or other remote Bluetooth device that offers fax service

1. From this computer, open **My Bluetooth Places**.
2. Click **Bluetooth Setup Wizard**.
3. Click **I know the device I want to use and I want to find a Bluetooth device that provides that service**, and then click **Next**.
4. In **Bluetooth Service Selection**, click **Fax**, and then click **Next**.
5. In **Bluetooth Device Selection**, click the name of the device having fax capabilities, and then click **Next**.
6. Click **Finish**.

To disconnect the fax

1. From this computer, open **My Bluetooth Places**.

 **NOTE:** If there is a **Fax** shortcut in My Bluetooth Places, skip to step 4.

2. Click **View devices in range**.
  3. Double-click the name of the device you established a fax connection with.
  4. Right-click **Fax**, and then click **Disconnect Fax**.
-



## Make a Network Connection to Another Bluetooth Device or to a Local Area Network (LAN) Using the Network Connection of the Other Device

To make a network connection to another Bluetooth device or to a local area network (LAN) using the network connection of the other device:

1. From this computer, open **My Bluetooth Places**.
2. Click **Bluetooth Setup Wizard**.
3. Click **I know the service I want to use and I want to find a Bluetooth device that provides that service**, and then click **Next**.
4. Click **Network Access** in the **Bluetooth Service Selection** list, and then click **Next**.
5. In **Bluetooth Device Selection**, click the name of the device you want to connect with, and then click **Next**.

To disconnect network access:

1. From this computer, open **My Bluetooth Places**.

 **NOTE:** If there is a **Bluetooth Serial Port** shortcut in My Bluetooth Places, skip to step 4.


2. Click **View devices in range**.
  3. Double-click the device you established a network access connection with.
  4. Right-click **Network Access**, and then click **Disconnect Network Access**.
-

## Exchange Electronic Business Cards with Another Bluetooth Device and Send Other PIM Items to the Other Device

To exchange electronic business cards with another Bluetooth device and send other PIM items to another Bluetooth device

1. From this computer, open **My Bluetooth Places**.
2. Click **Bluetooth Setup Wizard**.
3. Click **I know the service I want to use and I want to find a Bluetooth device that provides that service**, and then click **Next**.
4. Click **PIM Item Transfer** in the **Bluetooth Service Selection** list, and then click **Next**.
5. In **Bluetooth Device Selection**, click the name of the device you want to connect with, and then click **Next**.
6. Double-click the **PIM Item Transfer** shortcut in **My Bluetooth Places**.
7. In **Select a Bluetooth Business Card**, click the PIM that contains the business card (s) you want to send.
8. Click the contact name(s) in the list, and then click **OK**.

If Microsoft Outlook is selected as the Received Business Cards location in Bluetooth Properties, the contact file is sent to Microsoft Outlook Contacts. If **Save to Folder** is selected, the business card(s) is sent to the Bluetooth Exchange Folder.

 **NOTE:** If the Secure connection property of the PIM Transfer service is set on either device, the receiving party must be available to allow access when an access request is received. Otherwise, the PIM transfer fails.

---

## Synchronize the PIM Database on This Computer with the PIM Database of Another Bluetooth Device


To synchronize the PIM database on this computer with the PIM database of another Bluetooth device

1. From this computer, open **My Bluetooth Places**.
  2. Click **Bluetooth Setup Wizard**.
  3. Click **I know the service I want to use and I want to find a Bluetooth device that provides that service**, and then click **Next**.
  4. Click **PIM Synchronization** in the **Bluetooth Service Selection** list, and then click **Next**.
  5. In **Bluetooth Device Selection**, click the name of the device you want to synchronize PIM databases with, and then click **Next**.
  6. Click **Finish**.
  7. Right-click the **PIM Synchronization** shortcut in **My Bluetooth Places**, and then click **Properties**.
  8. Under **Synchronization**, click the PIM you want to synchronize (if any) in each of the data type lists.
  9. Double-click the **PIM Synchronization** shortcut in **My Bluetooth Places**.
-


## Print to a Bluetooth Printer from This Computer

To print to a Bluetooth printer from this computer


1. Refer to the manual that came with your printer to verify that the printer is Hardcopy Cable Replacement Profile compatible and to see what the Bluetooth security code or passkey is.
2. Turn on the Bluetooth printer.
3. From this computer, open **My Bluetooth Places**.
4. Click **I want to find a specific Bluetooth device and configure how this computer will use its services**, and then click **Next**.
5. In **Bluetooth Device Selection**, click the name of the Bluetooth printer you want to print to, and then click **Next**.

 NOTE: If several printers are listed and you are not sure which one is yours, check the serial number printed on the label on the bottom of the printer, and then select the printer having a matching serial number. The serial number is displayed when you move the mouse pointer over the printer icon.

6. Type *the Bluetooth security code* in the **Bluetooth security code** box, and then click **Pair Now**.

 NOTE: Refer to the manual that came with your Bluetooth printer for the Bluetooth security code for the printer.

7. In **Bluetooth Service Selection**, verify that the **Hardcopy Cable Replacement** checkbox is selected. If it is, click **Finish**. If it is not, click the check box to select it, and then click **Finish**.
8. Follow the instructions provided by the **Add Printer Wizard**.

 NOTE: The printer drivers for the printer must either be on the computer system, or you must have the drivers available on a CD.

9. In **Properties**, click **OK** to accept the default settings, or change the settings and then click **OK**.

You are now able to print from this computer to the Bluetooth printer.

---


## Print from Another Bluetooth Device to a Standard Printer That Is Physically Connected to This Computer

To print from another Bluetooth device to a standard printer that is physically connected to this computer

1. Verify that the local printer is physically connected to this computer by a cable, is set as the default printer, and is turned on.
2. From this computer, open **My Bluetooth Places**.
3. Click **View My Bluetooth services**.
4. Right-click **My Printer**, and then click **Enable**.
5. Refer to the manual that came with your Bluetooth device for instructions on how to print to another Bluetooth device.

-or-

If you are using a Bluetooth enabled computer, see [Print to a Bluetooth Printer from This Computer](#).

 **NOTE:** If the **Secure connection** property for the printer has been set on either computer, the operators of both computers must be available to allow access and to supply the Bluetooth security code when requested (see [Respond to Bluetooth Security and Authorization Messages](#)). Thereafter, access is granted automatically and it is not necessary to supply the security code.


---

## Establish a Virtual Serial Port Connection Between This Computer and Another Bluetooth Device

To establish a virtual serial port connection between this computer and another Bluetooth device

1. From this computer, open **My Bluetooth Places**.
2. Click **Bluetooth Setup Wizard**.
3. Click **I know the service I want to use and I want to find a Bluetooth device that provides that service**, and then click **Next**.
4. Click **Bluetooth Serial Port** in the **Bluetooth Service Selection** list, and then click **Next**.
5. In **Bluetooth Device Selection**, click the name of the device you want to connect with, and then click **Next**.
6. Click **Finish**.

The operator of the remote device must be available to respond to any authorization requests (see [Respond to Bluetooth Security and Authorization Messages](#)) that are sent from this computer. Note the COM port name that is associated with the connection and configure applications to use that port.

 **NOTE:** Unless you have a specific reason to do so, do not change the default COM port setting.

To disconnect the virtual serial port connection between this computer and a remote Bluetooth device

1. From this computer, open **My Bluetooth Places**.

 **NOTE:** If there is a Bluetooth Serial Port shortcut in My Bluetooth Places, skip to step 4.

2. Click **View devices in range**.
  3. Double-click the device you established a wireless serial connection with.
  4. Right-click **Bluetooth Serial Port**, and then click **Disconnect Bluetooth Serial Port**.
-

## Respond to Bluetooth Security and Authorization Messages

To respond to Bluetooth security messages

When a secure connection between two Bluetooth devices is being attempted, a PIN code request may appear in the notification area of either or both devices. If this request is ignored, the connection attempt fails. To allow a secure connection to proceed, click anywhere in the **Bluetooth PIN Code Required** message. Then type *the security code* in the **Bluetooth security code** box and click **OK**. If the remote device has a fixed PIN code, type *that PIN code* in the **Bluetooth security code** box. Otherwise, select a string of random alphanumeric characters and type them exactly the same in the **Bluetooth security code** box on both devices.

To respond to Bluetooth authorization messages

When a remote Bluetooth device attempts to connect to a secure service on this computer, this computer receives an authorization request that appears in the notification area. To allow access to the service, click anywhere in the **Bluetooth Authorization Requested** message, and then click **OK** in **Bluetooth Service Authorization**.

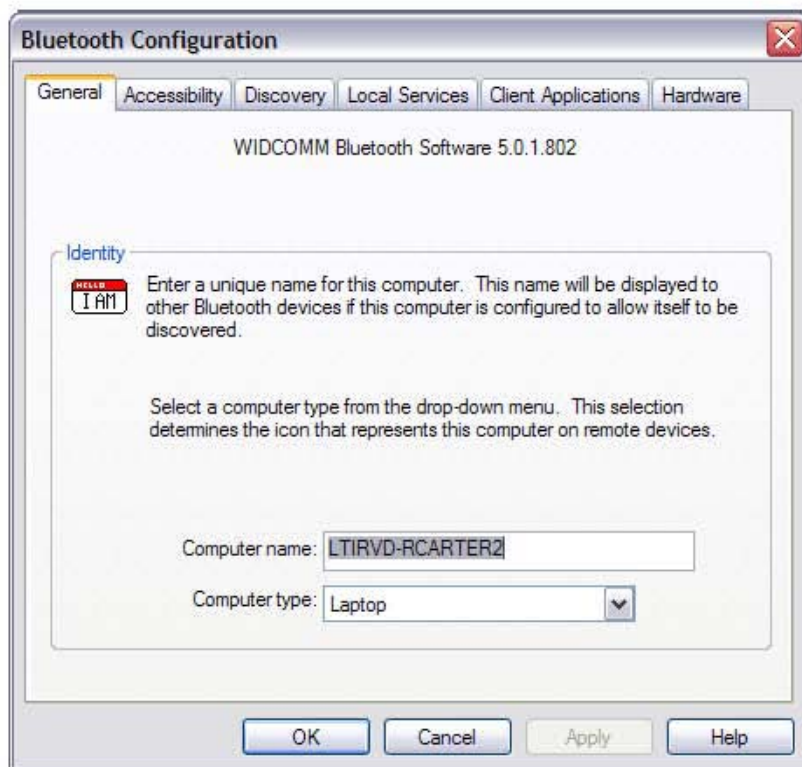
---

## Assigning a Name and Type to This Computer

The name you assign to this computer is displayed to other Bluetooth devices when this computer is set to be discoverable (see [Providing Access to Other Bluetooth Devices](#)). The default name is the name assigned by the operating system. The **Computer type** setting determines the type of icon (see [Status of Devices and Services](#)) that is used to represent this computer to other Bluetooth devices (see [Status of Devices and Services](#)).

To change the computer name or type

1. Open **My Bluetooth Places**.
2. Click **View or modify configuration**.
3. In **Bluetooth Configuration**, click the **General** tab and make the changes in the spaces provided.






## Providing Access to Other Bluetooth Devices

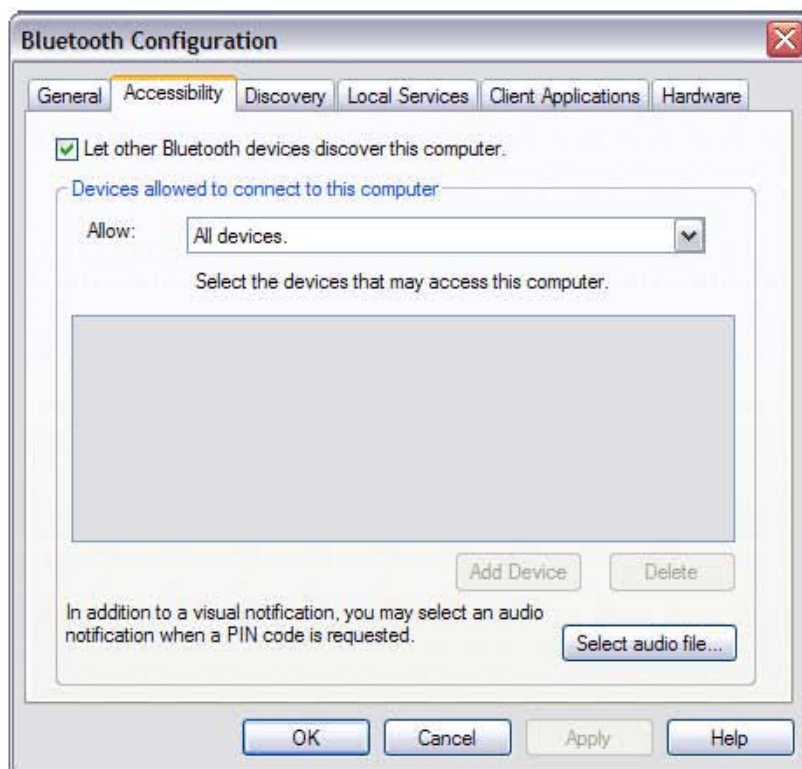
You can specify if you want to allow other Bluetooth devices to discover this computer. Also, you can specify whether to allow all or none of the devices that discover this computer to connect, or to allow only those devices that you designate to connect. The devices that you designate must be within range, and must themselves be discoverable. Also, you can specify the type of audio notification (if any) you want to receive in addition to a visual notification when another Bluetooth device requests a Bluetooth security code.

 **NOTE:** If you later clear the **Let other Bluetooth devices discover this computer** check box, devices that have previously connected to this computer can still do so.

To specify which Bluetooth devices to allow to discover and connect to this computer:

1. Open **My Bluetooth Places**.
2. Click **View or modify configuration**.
3. In **Bluetooth Configuration**, click the **Accessibility** tab and make the access settings you prefer in the spaces provided.

 **NOTE:** To prevent this computer from being discovered, clear the **Let other Bluetooth devices discover this computer** check box.



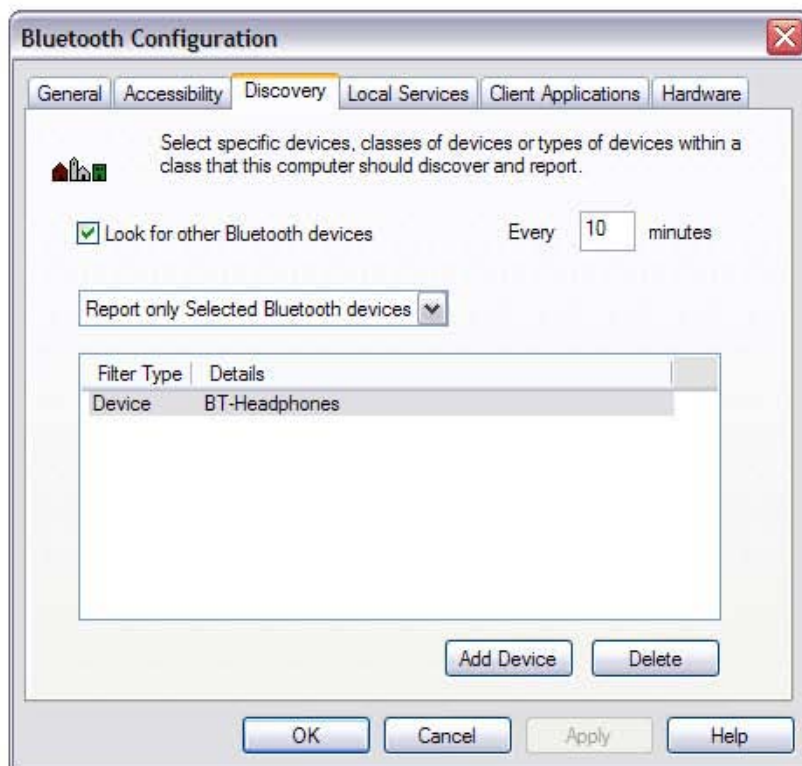
## Discovering Devices

You can set this computer to automatically look for other Bluetooth devices at a specific time interval. Also, you can limit the search to specific devices, classes of devices, or types of devices within a class. If you limit the search to specific devices, the devices must be within range, and must themselves be discoverable.

To specify which Bluetooth devices to look for and how often

1. Open **My Bluetooth Places**.
2. Click **View or modify configuration**.
3. In **Bluetooth Configuration**, click the **Discovery** tab and make the access settings you prefer in the spaces provided.

 **NOTE:** To prevent this computer from automatically looking for other Bluetooth devices, clear the **Look for other Bluetooth devices** check box.



## Setting Security

By default, the properties of all Bluetooth services that this computer provides and the Bluetooth applications (except Human Interface Device) that this computer uses are set to require a secure connection. When the **Secure connection** property is set, and this computer tries to connect to another Bluetooth device, the two devices must exchange a Bluetooth security code. This procedure positively identifies the device you want to connect to. After the exchange, the two Bluetooth devices are allowed to encrypt data.

---

## Managing Bluetooth Devices and Services

Bluetooth services are used to carry out actions between a program installed on your computer and a remote Bluetooth device. A Bluetooth device can offer one or more services. The following table describes the services (Local Services) and programs (Client Applications) available on this computer for various Bluetooth actions:

<b>Bluetooth Action</b>	<b>Local Service Function</b>	<b>Client Application Function</b>
Audio Gateway	Redirects audio from this computer to another Bluetooth device	Redirects audio on another Bluetooth device to this computer
Bluetooth Imaging	Receives image files sent from other Bluetooth devices	Sends image files to another Bluetooth device
Bluetooth Serial Port	Allows other Bluetooth devices to establish a wireless serial connection with this computer	Allows this computer to establish a wireless serial connection with another Bluetooth device
Dial-up Networking	Allows other Bluetooth devices to use the modem on this computer to access the Internet or a remote network	Allows this computer to connect to another Bluetooth device to access the Internet or a remote network
Fax	Allows other Bluetooth devices to use the fax modem on this computer to send a fax	Allows this computer to connect to another Bluetooth device to send a fax from this computer
File Transfer	Allows other Bluetooth devices to explore the Bluetooth Exchange Folder on this computer and to send files to or copy files from that folder.	Explore, send files to, or copy files from another Bluetooth device
Headset	Redirects the audio from another Bluetooth device to this computer	Redirects the audio from this computer to another Bluetooth device
Network Access	Allows other Bluetooth devices to create a private network with this computer or to access a local area network (LAN) through this computer	Allows this computer to access a LAN or connect to the Internet through another Bluetooth device
PIM Item Transfer	Sends and receives Personal Information Manager (PIM) items (business cards, and e-mail messages, for example) between this computer and another Bluetooth device	Sends PIM items (business cards, and e-mail messages, for example) to another Bluetooth device or exchanges business cards with another Bluetooth device.
PIM Synchronization	Synchronizes the PIM database of this computer with that of another Bluetooth device	Synchronizes the PIM database of this computer with that of another Bluetooth device
Printer	Allows other Bluetooth devices to print to a printer that is connected to this computer	Allows this computer to print to a Bluetooth printer
Human Interface Device	-	Allows this computer to use a Bluetooth HID

For specific detailed instructions on using Bluetooth devices and services, see [How to Use Bluetooth](#).

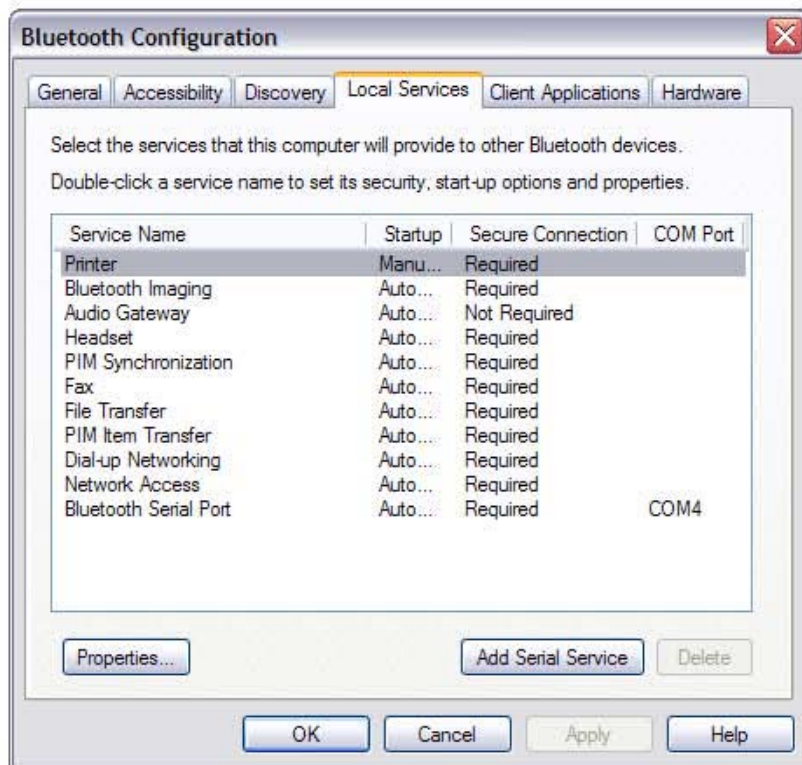
To manage your Bluetooth devices and services

1. Open **My Bluetooth Services**.
2. Click **View or modify configuration**.

From the **Local Services** tab of **Bluetooth Configuration**, you can select the services that this computer provides to other Bluetooth devices and set the properties for that service. By default, all Local Services are set to start automatically, to require a secure connection, and to require both visual and audio notification when a remote device attempts to connect to that service.

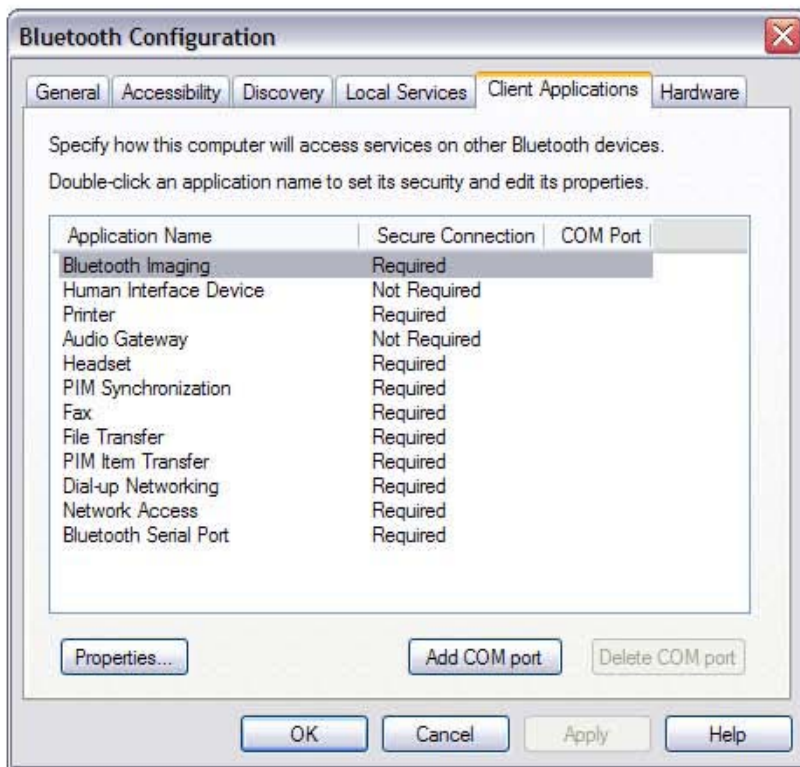
To set the properties for a service, click the service name, and then click **Properties**.

- From the **General** tab, you can set or clear the **Secure connection** property and the **Start up automatically** property for that service.
- From the **Notifications** tab, you can specify if and how you want to be notified.



From the **Client Applications** tab of **Bluetooth Configuration**, you can specify how this computer accesses services on other Bluetooth devices and set or clear the **Secure connection** property for that application. By default, all Client Applications except HID are set to require a secure connection.

To set the properties for an application, click the application name, and then click **Properties**. From the **General** tab, you can set or clear the **Secure connection** property. For certain applications, such as PIM Synchronization, File Transfer, PIM Item Transfer, and Dial-up Networking, you can make other settings that affect how the application functions.



## Managing Local Bluetooth Radios

From the **Hardware** tab, you can manage the Bluetooth devices (radios) that are installed on this computer. Also, you can view the following information about each radio:

### Devices

- Name
- Status
  - Active (Preferred)
  - Inactive
  - Disabled
- Type

### Device Properties

- Device status - Indicates that the device is operating properly, or that there is a problem/conflict
- Manufacturer - The company that manufactured the device
- Firmware Revision - The manufacturer's firmware version number
- Device Address - The Bluetooth Device Address assigned to this device when it was manufactured
- HCI Version - The version number of the Bluetooth specification with which the Host Controller Interface complies
- HCI Revision - The revision number of the Bluetooth specification with which the Host Controller Interface complies
- LMP Version - The version number of the Bluetooth specification with which the Link Manager Protocol complies
- LMP Sub-version - The sub-version number of the Bluetooth specification with which the Link Manager Protocol complies

### NOTES:

- Only one Bluetooth radio can be used at a specific time.
- If you change the Bluetooth radio device, you must redo pairing with other Bluetooth devices.

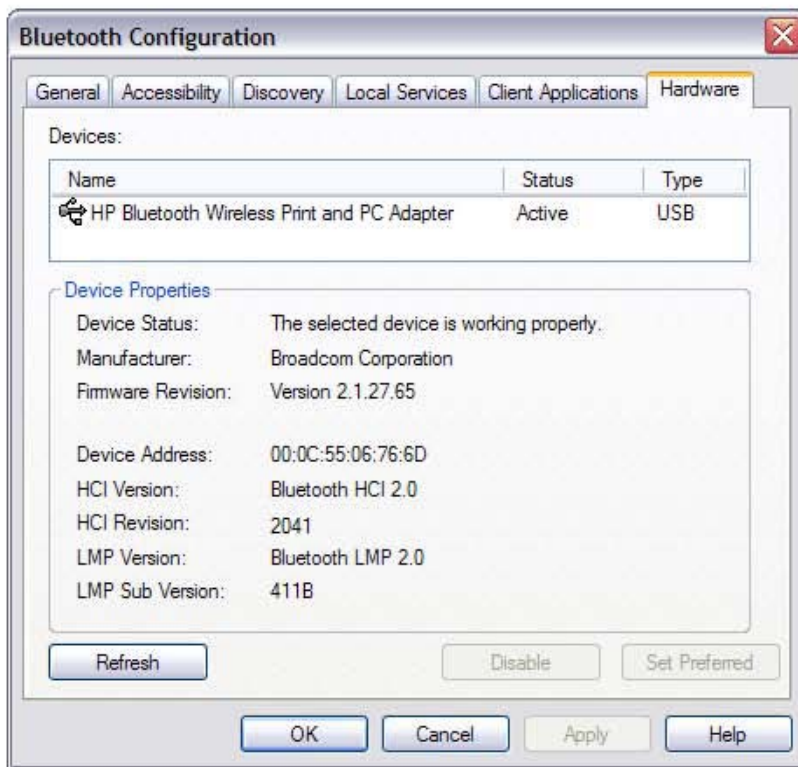
To manage the Bluetooth radio devices that are installed on this computer


1. Open **My Bluetooth Places**.
2. Click **View or modify configuration**, and then click the **Hardware** tab.

To query the active radio and update the data displayed in **Device Properties**, click **Refresh**.

To disable or enable a particular Bluetooth radio device, click the name of the device, and then click either **Disable**, or **Enable**, as appropriate.

To specify which Bluetooth radio device you prefer to use, click the name of the device, and then click **Set Preferred**.



 NOTES:

- If you enable a radio device, and another radio is set as Active (Preferred), the status of the enabled device is automatically set to Inactive, which means that it is available for use, but it is not the preferred device.
- If you enable a radio device, and no other radio device has been set to Active (Preferred), the status of the enabled device is automatically set to Active.
- When a radio is plugged in or unplugged while the Bluetooth Configuration panel is open, click Refresh to update the information displayed.
- If you do not intend to use a device, disable it to conserve battery power.



## Troubleshooting

<b>Problem or Symptom</b>	<b>Possible Solution</b>
I cannot connect to a paired device that is listed in Entire Bluetooth Neighborhood	<ul style="list-style-type: none"> <li>· Check to see if the device is powered on, in range, and in Discoverable mode (refer to the manual that came with the device for instructions for making the device discoverable). Devices that you have paired with are listed in Entire Bluetooth Neighborhood regardless of whether they are powered on, in range, or in Discoverable mode.</li> <li>· Check to see if the device Bluetooth radio is turned on (refer to the manual that came with the device for instructions). If the other device is a Bluetooth computer, check the appearance of the Bluetooth icon in the notification area (see <a href="#">Using Bluetooth Tools</a>).</li> </ul>
The device I want to connect to is not listed in Entire Bluetooth Neighborhood	Check to see if the device is powered on, in range, and in Discoverable mode. See <a href="#">Finding Bluetooth Devices</a> .
I cannot print to the Bluetooth printer from this computer	<ul style="list-style-type: none"> <li>· If you have printed to the printer before, verify that the printer is in range, is powered on, is not malfunctioning, and is still paired with this computer.</li> <li>· If you have not printed to the printer before, did you install the printer? If not, install the printer according to the instructions provided in <a href="#">Print to a Bluetooth Printer from This Computer</a>. If you did install the printer, verify that the procedure you followed matches the instructions.</li> </ul>
I cannot print Print from another Bluetooth computer to a standard printer that is physically connected to this computer	<ul style="list-style-type: none"> <li>· If you have printed to the printer before, verify that you are in range of and paired with this computer, that both the printer and this computer are powered on, that the printer is not malfunctioning, and that the printer is the default printer for this computer.</li> <li>· If you have not printed to the printer before, did you install the printer on your computer as specified in <a href="#">Print from Another Bluetooth Device to a Standard Printer That Is Physically Connected to This Computer</a>? If not, follow these instructions and try again.</li> </ul>
I cannot send a fax using the fax capabilities of a Bluetooth telephone, modem, or other device that offers fax service.	The device offering the fax service may be set to use another device instead of the fax modem.
I cannot adjust the headphone volume.	<ul style="list-style-type: none"> <li>· Check to see if the volume on the headphones is set to minimum.</li> <li>· Adjust the volume using the volume control on the media player rather than the master volume control on the computer.</li> </ul>
I cannot communicate with a cell phone or reconnect to a cell phone.	Verify that the cell phone is in Discoverable mode, is in range, and that the Bluetooth radio is turned on. See <a href="#">Finding Bluetooth Devices</a> .

This device complies with Part 15 of the FCC Rules. Operation is subject to the following two conditions:

- (1) This device may not cause harmful interference.
- (2) This device must accept any interference received, including interference that may cause undesired operation.

15.105 Federal Communications Commission (FCC) Requirements, Part 15

**This equipment has been tested and found to comply with the limits for a class B digital device, pursuant to part 15 of the FCC Rules. These limits are designed to provide reasonable protection against harmful interference in a residential installation.**

**This equipment generates, uses and can radiate radio frequency energy and, if not installed and used in accordance with the instructions, may cause harmful interference to radio communications. However, there is no guarantee that interference will not occur in a particular installation. If this equipment does cause harmful interference to radio or television reception, which can be determined by turning the equipment off and on, the user is encouraged to try to correct the interference by one or more of the following measures:**

- Reorient or relocate the receiving antenna.**
- Increase the separation between the equipment and receiver.**
- Connect the equipment into an outlet on a circuit different from that to which the receiver is connected.**
- Consult the dealer or an experienced radio/TV technician for help.**

**Any changes or modifications (including the antennas) made to this device that are not expressly approved by the manufacturer may void the user's authority to operate the equipment.**

**FCC RF Radiation Exposure Statement: This equipment complies with FCC RF radiation exposure limits set forth for an uncontrolled environment. This device and its antenna must not be co-located or operating in conjunction with any other antenna or transmitter.**