

2. **Right-click on the business card data to be sent, and then click on the destination printer under [to *Bluetooth*]**

 **Note**

- If your desired device does not appear in the list, please confirm that the device has been turned on, and then click on [to *Bluetooth*] → [Search Other

Devices]

Once the device has been detected, select the destination device, and click on the [Send] button.

The business card will be sent to the printer.

If the business card has been sent to the printer successfully, a message will appear, and the image will be printed out. Please click on the [OK] button.

A message will appear if the business card transmission was unsuccessful. Please click on the [OK] button to close the message, and repeat the printing procedure.

Using the stereo headphones/speaker to listen to music [GAVDP] [A2DP] [AVRCP]

This section describes how to use the stereo headphones/speaker to listen to your favourite music or other audio files stored on your PC.



- [Configuring the stereo headphones/speaker](#)
- [Connecting to the stereo headphones/speaker](#)
- [Listening to music or other audio files](#)
- [Playing music using remote control](#)
- [Copyright protection function](#)

→ Copyright protection function

Configuring the stereo headphones/speaker

Procedure

1. **Right-click on the *Bluetooth* wireless technology icon in the task tray, and click**

on [Add New Connection].

Note

- Alternatively, click [Start] → [All Programs] → [*Bluetooth*] → [*Bluetooth Settings*], and then click on [New Connection] from the [*Bluetooth Settings*] screen that has opened.

The [Add New Connection Wizard (Welcome to the Add New Connection Wizard)] will appear.

2. **Switch ON the stereo headphones/speaker and activate "Discoverable" mode**
Please refer to the user guide for the stereo headphones/speaker for further information on how to operate them.
3. **Confirm that [Express Mode] has been selected, and then click on the [Next] button**

The [Add New Connection Wizard (Searching for *Bluetooth* devices)] screen will appear.

Once the search for the devices has ended, the [Add New Connection Wizard (Select Device)] screen will appear.

4. **Select the device name of the stereo headphones/speaker from the list, and click on the [Next] button**

The [Add New Connection Wizard (Searching for Services)] screen will appear.

The settings will be registered, and the icon will appear on the [*Bluetooth Settings*] screen.



Connecting to the stereo headphones/speaker

You can connect to the stereo headphones/speaker from the icon registered in [Bluetooth Settings]. Please refer to the user guide for information on how to make a connection from the stereo headphones/speaker.

Important

- Please close the following audio applications before any connection is made between your stereo headphones/speaker and PC.
 - Music/video playback applications
 - e-Conferencing applications
 - Voice-recognition applications

Please finish connecting the stereo headphones/speaker before launching any of these applications.

Note

- You can establish the connection automatically by following the steps below:
 1. Run [Start] → [All Programs] → [Bluetooth] → [Bluetooth Settings], and select Stereo Headset/Speaker
 2. Right-click on the icon, and check [Details] → [Automatic connection function will be validated.]

Please finish connecting the stereo headphones/speaker before launching any of these applications.

Listening to music or other audio files

1. Playing music or other audio files on your PC

Important

- Please check the following if you are unable to hear anything despite having properly connected the stereo headphones/speaker:
Click the [Playback] tab from the Sound screen, which is accessed by clicking on [Control Panel]→[Hardware and Sound]→[Sound].

Deselect [Mute] if it has been selected. If the volume is at its lowest setting, please adjust it to an appropriate level.

- please adjust it to an appropriate level.
- You may experience interruption to audio playback if other *Bluetooth* wireless technology devices are currently connected to your PC. When you are listening to music, it is recommended that the stereo headphones/speaker be the only connected device.
 - You may also experience interruption to audio playback if you are located some distance away from the PC, or if there are any obstructions between you and the PC.
 - If you are unable to hear any sound out of your stereo headphones/speaker

even though music or audio is currently playing in a related application, please stop the files being played, click on [Control Panel]→[Hardware and Sound]→[Sound], and change the existing device to "Toshiba *Bluetooth* Wave."

If you are still unable to hear any sound through your headphones/speaker even after having changed the existing device to "Toshiba *Bluetooth* Wave," please restart the application.

Note

- If you are running Windows XP and are unable to hear any sound although the stereo headphones/speaker have been properly connected, please follow the procedure below.
Click [Start]→[All Programs]→[Accessories]→[Entertainment]→[Volume Control].
- If you are running Windows XP and are unable to hear any sound in your stereo headphones/speaker despite the fact that an audio/video playback application is running, stop the file being played in the application, click [Control Panel]→[Sound and Audio Device], and change the existing device to "Toshiba *Bluetooth* Wave." If you are still unable to hear any sound through your headphones/speaker even after having changed the existing device to "Toshiba *Bluetooth* Wave," please restart the application.

2. Finishing listening to music and disconnecting

1. **Right-click on the icon for the currently connected mode from [Bluetooth Settings] on your PC, and click on "Disconnect."**
A message confirming the disconnection may appear.
2. **Click on the "Yes" button after having followed the instructions in the message.**
The icon will indicate that the device has been disconnected.

Important

- Please close the following audio applications before you disconnect the stereo headphones/speaker from your PC:
 - Music/video playback applications
 - e-Conferencing applications
 - Voice-recognition applications

- Voice-recognition applications

Please completely disconnect the stereo headphones/speaker before launching any of these applications.

Please refer to the user guide for information on terminating a connection from the stereo headphones/speaker.

Playing music using remote control

Music applications and video playback applications installed on your PC (e.g., "Windows Media Player 9" and "InterVideo WinDVD") may be operated with the remote control button/switch on your stereo headphones/speaker.

The remote control used with the stereo headphones/speaker must be compliant with the *Bluetooth* wireless technology AVRCP profile. Please refer to the headphones/speaker user guide for further information.

You can configure the application to be operated using the switch/button according to the following procedure.

Procedure

1. **Double-click on the *Bluetooth* wireless technology icon in the taskbar**
Launches "*Bluetooth* Settings."
2. **Right-Click the *Bluetooth* Wireless Technology icon and Click on [Options] → [Other] Tab → [AV Player] in [AV player section]**
The [Select AV Player] screen will appear.
3. **Select the application, and click on the [OK] button**

The functions and switch/button that can be operated may differ depending on the application used for music/video playback as well as the version.

The procedure below can be performed in order to change the position where the receive command is displayed or to not have the command displayed.

Procedure

1. **Double-click on the *Bluetooth* wireless technology icon in the taskbar**
Launches "*Bluetooth Settings*."
2. **Right-Click the *Bluetooth Wireless Technology* icon and Click on [Options] → [Other] Tab → [AV Player] in [AV player section]**
The [Select AV Player] screen will appear.
3. **Select the appropriate item from the pull-down menu of**

positions where the receive command is to be displayed, and then click on the [OK] button.

If the receive command appears but does not function properly, sometimes the problem may be rectified by changing the setting to "Do not display."

The commands supported by this application are shown below. Please refer to the headphone user guide for commands that are supported by the stereo headphones/speaker. Problems with operation may be encountered with certain versions of "Windows Media Player 9" and "InterVideo WinDVD."

[Windows Media Player 9]

- Play
- Stop
- Pause
- Next
- Previous
- Fast forward
- Rewind

[InterVideo WinDVD]

- Play
- Stop
- Pause
- Next chapter
- Previous chapter
- Fast Forward
- Fast Backward
- Up
- Down
- Left
- Right
- Select
- Root menu
- Angle



Copyright protection function

A copyright protection function is supported according to the SCMS-T format as defined in the *Bluetooth* wireless technology specifications.

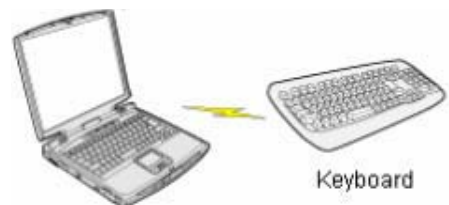
Related topics

→ "AV profile [Copyright protection function](#)"



Using a wireless keyboard [HID]

This section describes how to connect a *Bluetooth* wireless technology-compatible keyboard to a PC.



Setting up the wireless keyboard

Procedure

1. Right-click on the *Bluetooth* wireless technology icon in the task tray, and then click on [Add New Connection]

Note

- Alternatively, click [Start] → [All Programs] → [*Bluetooth*] → [*Bluetooth Settings*], and then click on [New Connection] from the active [*Bluetooth Settings*] window.

The [Add New Connection Wizard (Welcome to the Add New Connection Wizard)] window will appear.

2. Confirm that [Express Mode] has been selected, and then click on the [Next] button

The [Add New Connection Wizard (Searching for *Bluetooth* devices)] window will

The [Add New Connection Wizard (Searching for *Bluetooth* devices)] window will appear.

Once the program has finished searching for the devices, the [Add New Connection Wizard (Device Selection)] window will appear.

3. **Select the device name of the keyboard from [Device List], and then click on the [Next] button**

The [Add New Connection Wizard (Searching for Services)] window will appear.

4. **Use the wireless keyboard to enter the numbers that appear in [Bluetooth Passkey (PIN Code)], and then hit the [Enter] key**

Once the program has detected the services successfully, connection to the device and registration of settings information will be performed automatically.

The settings information will be registered, and an icon will appear in the [Bluetooth Settings] window.



Note

- Pressing any key on the wireless keyboard will automatically connect it to the PC thereafter.
Please connect **manually** if automatic connection is unsuccessful.

Using a wireless mouse [HID]

This section describes how to connect a *Bluetooth* wireless technology-compatible mouse to a PC.





Mouse

Setting up the wireless mouse

Procedure

1. Turn on the wireless mouse, and set it to be connectable

Please refer to the instruction manual for details on how to operate the mouse.

Note

- If the security mode on your PC has been set to "Enable Link-Level Security," then any mouse not ordinarily requiring a passkey will require one. If your mouse's user guide does not contain any passkey-related information, please consult the outlet where you purchased your mouse or the relevant support center.

2. Right-click on the *Bluetooth* wireless technology icon in the task tray, and then click on [Add New Connection]

Note

- Alternatively, click [Start] → [All Programs] → [*Bluetooth*] → [*Bluetooth Settings*], and then click on [New Connection] from the active [*Bluetooth Settings*] window.

The [Add New Connection Wizard (Welcome to the Add New Connection Wizard)] window will appear.

3. Confirm that [Express Mode] has been selected, and then click on the [Next] button

The [Add New Connection Wizard (Searching for *Bluetooth* devices)] window will appear.

Once the program has finished searching for the devices, the [Add New Connection Wizard (Device Selection)] window will appear.

4. Select the device name of the mouse from [Device List], and then click on the [Next] button

The [Add New Connection Wizard (Searching for Services)] window will appear.

A message confirming a device connection will appear.

A message confirming a device connection will appear.

5. Click on the [OK] button

The settings information will be have been registered, and an icon will appear in the [*Bluetooth Settings*] window.



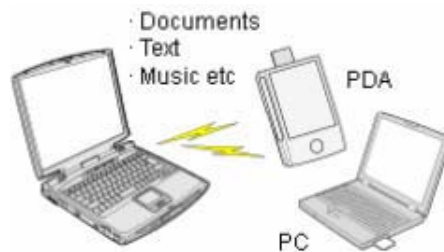
 **Note**

- Clicking on one of the mouse buttons or otherwise operating it will automatically connect it to the PC thereafter. Please connect **manually** if automatic connection is unsuccessful.



 **Exchanging files with a PC or PDA [FTP]**

You can send and receive files other than business card data with a PC or PDA that has onboard *Bluetooth* wireless technology. Use "File transfer" in the *Bluetooth* Information Exchanger to exchange files.



 **Note**

- The same operations will be valid as long as the PC and PDA support the FTP profile.
- "File transfer" cannot be used to send or receive business card data. Please instead use "Object Push" to perform these activities.

"Object Push" to perform these activities.

- Sending files to a PC or PDA (using icons)
- Sending files to a PC or PDA (by right-clicking the mouse)
- Receiving files from a PC or PDA

Procedure

■ Sending files to a PC or PDA (using icons)

1. Turn on the PC or PDA
2. Open *Bluetooth* Information Exchanger

Note

- Please refer to [Contents of the Bluetooth Utility](#) on how to open *Bluetooth* Information Exchanger

3. Double-click on the [File transfer] icon

A list of devices will appear in the [File transfer] window.

Note

- If the desired device does not appear in the list, please confirm that the device has been turned on, and then select [*Bluetooth*] → [Search Devices]. A device search will be performed.
- You can also use "Image transfer" when sending individual image files.

4. Use the mouse to drag and drop the file you wish to send over the destination icon

Note

- When using "File transfer", you can send individual files as well as entire folders.

5. Confirm that the file is being sent
The file will be sent to the PC.

Note

- When sending files using "File transfer", a message requesting permission to receive the files may appear on the destination (receiving) device. The content of the message will vary with the software that supports the *Bluetooth* wireless technology function on the destination device, so please be sure to follow the instructions provided.
If you are using the *Bluetooth* Utility, a message will appear.

If the file has been sent successfully, a message will appear.

Please click on the [OK] button.

A message will appear if the file transmission was unsuccessful.
Please click on the [OK] button to close the message, and repeat the procedure.

 **Note**

- Files that have been sent will be saved in a file transfer shared folder on the destination device.
- Additionally, with "File transfer", you can open the shared folder on the destination device using Explorer, specify a subfolder, and then send the file there.
- You can use the Settings on [*Bluetooth Information Exchanger*] tab in [Options] to change the location of the "Shared folder" on the hard drive.

■ **Sending files to a PC or PDA (by right-clicking the mouse)**

1. Turn on the PC or PDA

Confirm that a connection has been enabled before proceeding to the next step.

2. Right-click on the file you wish to send, and then select its destination from [to *Bluetooth*]

 **Note**

- If the desired device does not appear in the list, please confirm that the device has been turned on, and then select [to *Bluetooth*] → [Search other devices].

Once the devices have been detected, a window will appear. Please select the destination device, and then click on the [Send] button.

3. Confirm that the file is being sent

The file will be sent to the PC.

 **Note**

- When sending files using "File transfer," a message requesting permission to receive the files may appear on the destination (receiving) device. The content of the message will vary with the software installed on the destination device,

of the message will vary with the software installed on the destination device, so please be sure to follow the instructions provided.

If the file has been sent successfully, a message will appear.
Please click on the [OK] button.

A message will appear if the file transmission was unsuccessful.
Please click on the [OK] button to close the message, and then repeat the procedure.



- Files that have been sent will be saved in a file transfer shared folder on the destination device.

■ Receiving files from a PC or PDA

Your PC is able to receive files that have been saved in the shared folder on the destination PC or PDA. Received files will be saved in the shared folder under "File transfer".

1. Turn on the PC or PDA

Confirm that a *Bluetooth* wireless technology connection has been enabled before proceeding to the next step.

2. Open *Bluetooth* Information Exchanger



- Please refer to [Contents of the Bluetooth Utility](#) on how to open *Bluetooth* Information Exchanger

3. Double-click on the [File transfer] icon

A list of devices will appear in the [File transfer] window.

4. Double-click on the destination icon

The file saved in the destination's shared folder will appear.

5. Right-click on the file you wish to receive, and then select "Receive file".

The file will be received from a PDA.



- With "File transfer", you can send individual files as well as entire folders.

- With "File transfer", you can send individual files as well as entire folders. Please right-click on the folder you wish to receive, and select "Receive folder".

Subsequent operations should be performed in the same manner as when receiving individual files.

- When you receive a file, you can start the associated application (such as Explorer) automatically to open the file. After receiving a file, and depending

on the type of file, you can carry out the steps below (you cannot choose "open file" when you receive files with the extension "exe, com, bat, class, cla, vbs, js or msi".)

- Open the received folder: Open the received folder using Explorer
- Open the file : Open the file using the associated application
- Close : Close

Open Option tab → [Bluetooth Information Exchange] → [[Associate](#)] tab and click [Detail settings] to open message box

- The received file will be saved in the "Shared folder" under "File transfer" in the *Bluetooth* Information Exchanger

You can use the Settings on [[Bluetooth Information Exchanger](#)] tab in [Options] to specify the location of the "Shared folder" on the hard drive.



Sending images to a mobile telephone [BIP]

You can send image data to a *Bluetooth* wireless technology-compatible mobile telephone.

Large images will be automatically reduced to fit on the telephone display screen.

Images are sent using "Image transfer" under *Bluetooth* Information Exchanger.



Note

- The mobile telephone must support the BIP profile.
- The following image file formats can be sent and received using "Image transfer":
 - Bitmap (*.bmp)
 - JPEG (*.jpg, *.jpeg)
 - PNG (*.png)

→ [Sending images to a mobile telephone \(using icons\)](#)

→ [Sending images to a mobile telephone \(by right-clicking the mouse\)](#)

Procedure

■ Sending images to a mobile telephone (using icons)

1. Turn on the PC or PDA

Confirm that a *Bluetooth* wireless technology connection has been enabled before proceeding.

2. Open *Bluetooth* Information Exchanger

Note

- Please refer to [Contents of the Bluetooth Utility](#) on how to open *Bluetooth Information Exchanger*

3. Double-click on the [Image transfer] icon

A list of devices will appear in the [Image transfer] window.

 **Note**

- If the desired device does not appear in the list, please confirm that the device has been turned on, and then select [*Bluetooth*] → [Search Devices]. A device search will be performed.

4. Drag and drop the file you wish to send over the destination icon

The image will be sent.

If the image has been sent successfully, a message will appear.

Please click on the [OK] button.

A message will appear if the image transmission was unsuccessful.

Please click on the [OK] button to close the message, and repeat the procedure.

■ Sending images to a mobile telephone (by right-clicking the mouse)

1. Turn on the mobile telephone

Confirm that a *Bluetooth* wireless technology connection has been enabled before proceeding.

2. Right-click on the file you wish to send, and then click on its destination from [to *Bluetooth*]

 **Note**

- If the desired device does not appear in the list, please confirm that the device has been turned on, and then select [to *Bluetooth*] → [Search other devices].

Once the devices have been detected, a window will appear. Please select the destination device, and then click on the [Send] button.

The image will be sent.

If the image has been sent successfully, a message will appear.

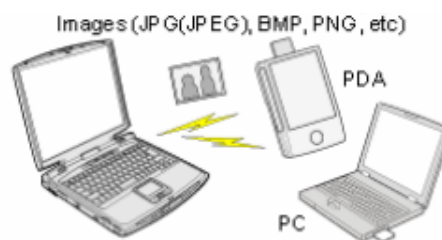
Please click on the [OK] button.

A message will appear if the image transmission was unsuccessful.

Please click on the [OK] button to close the message, and repeat the procedure.

Sending images to a PC or PDA [BIP]

You can send image data to a *Bluetooth* wireless technology-enabled PC or PDA. Images are sent using "Image transfer" under *Bluetooth* Information Exchanger.



Note

- The following image file formats can be sent and received using "Image transfer":
 - Bitmap (*.bmp)
 - JPEG (*.jpg, *.jpeg)
 - PNG (*.png)

→ [Sending images to a PC or PDA \(using icons\)](#)

→ [Sending images to a PC or PDA \(by right-clicking the mouse\)](#)

Procedure

■ Sending images to a PC or PDA (using icons)

1. Turn on the PC or PDA

Confirm that a *Bluetooth* wireless technology connection has been enabled before proceeding.

2. Open *Bluetooth* Information Exchanger

Note

- Please refer to [Contents of the Bluetooth Utility](#) on how to open *Bluetooth* Information Exchanger

Information Exchanger

3. Double-click on the [Image transfer] icon

A list of devices will appear in the [Image transfer] window.



- If the desired device does not appear in the list, please confirm that the device has been turned on, and then select [*Bluetooth*] → [Search Devices]. A device search will be performed.

4. Drag and drop the file you wish to send over the destination icon

The image will be sent.

If the image has been sent successfully, a message will appear.

Please click on the [OK] button.

A message will appear if the image transmission was unsuccessful.

Please click on the [OK] button to close the message, and repeat the procedure.



- Images that have been sent will be saved in an image transfer folder on the destination device.
- Images received using "Image transfer" in the *Bluetooth* Information Exchanger will be saved in the "Image Box" in "Image transfer".
- You can use the Settings on [*Bluetooth Information Exchanger*] tab in [Options] to change the location of the "Image Box" folder on the hard drive.

■ Sending images to a PC or PDA (by right-clicking the mouse)

1. Turn on the PC or PDA

Confirm that a *Bluetooth* wireless technology connection has been enabled before proceeding

2. Right-click on the file you wish to send, and then click on its destination from [to *Bluetooth*]



- If the desired device does not appear in the list, please confirm that the device has been turned on, and then select [to *Bluetooth*] → [Search other devices].

Once the devices have been detected, a window will appear. Please select the destination device, and then click on the [Send] button.

destination device, and then click on the [Send] button.

The image will be sent.

If the image has been sent successfully, a message will appear.

Please click on the [OK] button.

A message will appear if the image transmission was unsuccessful.

Please click on the [OK] button to close the message, and repeat the procedure.

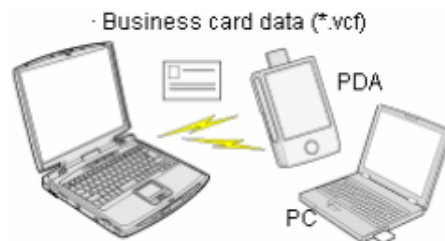
Note

- When you send images by right-clicking the mouse, the image data that has been sent will be saved in the image transfer shared folder on the destination device. This is also the case when you send images using icons.

Exchanging business card data with a PC or PDA [OPP]

You can exchange business card data with a *Bluetooth* wireless technology-enabled PC or PDA.

Business card data are exchanged using "Object Push" under *Bluetooth* Information Exchanger.



Note

- Data compliant with the "vCARD" standard are the only type of business card data able to be sent and received with "Object Push". Business card data can be used by applications such as Microsoft Outlook.
- Business card data can be created in vCARD format by Microsoft Outlook and other similar applications.
→ ["Creating business card data in the vCARD format"](#)
- You can send business card data directly from Microsoft Outlook.

- You can send business card data directly from Microsoft Outlook.
→ "Sending business card data from Outlook"
 - The OPP profile must be supported by the PC or PDA of the other party.
- [Selecting a business card and sending it to a PC or PDA \(using icons\)](#)
 → [Selecting a business card and sending it to a PC or PDA \(by right-clicking the mouse\)](#)
 → [Sending your personal business card](#)
 → [Receiving a business card from another party](#)
 → [Exchanging business cards](#)

Procedure

■ Selecting a business card and sending it to a PC or PDA (using icons)

Select a business card you wish to send from among all the business card data you have already received through exchanges with your business or other contacts, and then send it to another party.

1. Turn on the PC or PDA

Confirm that a *Bluetooth* wireless technology connection has been enabled before proceeding.

2. Open *Bluetooth* Information Exchanger



- Please refer to [Contents of the Bluetooth Utility](#) on how to open *Bluetooth* Information Exchanger

3. Double-click on the [Object Push] icon

A list of devices will appear in the [Object Push] window.



- If the desired device does not appear in the list, please confirm that the device has been turned on, and then select [*Bluetooth*] → [Search Devices]. A device search will be performed.

4. Use the mouse to drag and drop the business card you wish to send over the destination icon

The business card will be sent.





- When you try to send a business card, a message requesting permission to receive the card may appear on the device belonging to the other party (i.e., on the receiving end). The content of the message will vary with the software installed on the destination device, so please be sure to follow the instructions provided.

If the business card has been sent successfully, a message will appear.

Please click on the [OK] button.

A message will appear if the business card transmission was unsuccessful. Please click on the [OK] button to close the message, and repeat the procedure.

Memo

- Data that have been sent will be saved in a folder for exchanged business cards on the destination device.
- You can configure an associated application (Microsoft Outlook etc) to start automatically when you have received a business card, allowing you to view the card details.

You can use the Settings on [\[Bluetooth Information Exchanger\]](#) tab in [Options] to configure whether or not you would like such an application to start automatically.

■Selecting a business card and sending it to a PC or PDA (by right-clicking the mouse)

1. Turn on the PC or PDA

Confirm that a *Bluetooth* wireless technology connection has been enabled before proceeding.

2. Right-click on the business card you wish to send, and then click on its destination from [to *Bluetooth*]

Note

- If the desired device does not appear in the list, please confirm that the device has been turned on, and then select [to *Bluetooth*] → [Search other devices].

Once the devices have been detected, a window will appear. Please select the destination device, and then click on the [Send] button.

The business card will be sent.



 **Note**

- When you try to send a business card, a message requesting permission to receive the files may appear on the device belonging to the other party (i.e., on the receiving end). The content of the message will vary with the software installed on the destination device, so please be sure to follow the instructions provided.
If you are using the *Bluetooth Utility*, a message will appear.

If the business card has been sent successfully, a message will appear.
Please click on the [OK] button.

A message will appear if the business card transmission was unsuccessful.
Please click on the [OK] button to close the message, and repeat the procedure.

 **Note**

- Data that have been sent will be saved in a folder for exchanged business cards on the destination device.

■ Sending your personal business card

You can prepare a business card bearing your name and other details such as your company and telephone numbers, and then send it to another party.

 **Note**

- You can use the Settings on [*Bluetooth Information Exchanger*] tab in [Options] beforehand to configure which data to use for your own business card.
- You can only have one business card registered as your own that is able to be sent.

1. Turn on the PC or PDA

Confirm that a *Bluetooth* wireless technology connection has been enabled before proceeding

2. Open *Bluetooth Information Exchanger*

 **Note**

- Please refer to [Contents of the *Bluetooth Utility*](#) on how to open *Bluetooth Information Exchanger*

3. Double-click on the [Object Push] icon

A list of devices will appear in the [Object Push] window.

 **Note**

- If the desired device does not appear in the list, please confirm that the device has been turned on, and then select [*Bluetooth*] → [Search Devices]. A device search will be performed.

4. Right-click on the destination icon, and then click on [Send business card To]
The business card will be sent.

 **Note**

- When you try to send a business card, a message requesting permission to receive the files may appear on the device belonging to the other party (i.e., on the receiving end). The content of the message will vary with the software installed on the destination device, so please be sure to follow the instructions provided.
If you are using the *BluetoothUtility*, a message will appear.
- Business cards that have been sent will be saved in the Inbox of the destination party.

If your business card has been sent successfully, a message will appear.
Please click on the [OK] button.

A message will appear if the business card transmission was unsuccessful. Please click on the [OK] button to close the message, and repeat the procedure.

 **Note**

- Data that has been sent will be saved in a folder for exchanged business cards on the destination device.

■Acquiring a business card from another party

You can use your PC to acquire a business card from a party containing their details.

1. Turn on the PC or PDA

Confirm that a *Bluetooth* wireless technology connection has been enabled before proceeding

2. Open *Bluetooth* Information Exchanger

 **Note**

- Please refer to [Contents of the *Bluetooth* Utility](#) on how to open *Bluetooth*

Information Exchanger

3. Double-click on the [Object Push] icon

A list of devices will appear in the [Object Push] window.

Note

- If the desired device does not appear in the list, please confirm that the device

has been turned on, and then select [*Bluetooth*] → [Search Devices].
A device search will be performed.

4. Right-click on the icon of the party whose card you wish to acquire, and then click on [Receive business card]

The business card will be received.

Note

- When you try to acquire a business card, a message requesting permission to send the files may appear on the device belonging to the other party (i.e., on the sending end). The content of the message will vary with the software installed on the destination device, so please be sure to follow the instructions provided.
If you are using the *Bluetooth* Utility, a message will appear.

If the business card has been received successfully, a message will appear.
Please click on the [OK] button.

A message will appear if the business card was unsuccessfully received.
Please click on the [OK] button to close the message, and repeat the procedure.

Note

- Business card data that have been received will be saved in the Inbox under "Object Push".
You can use the Settings on [*Bluetooth Information Exchanger*] tab in [Options] to change the location of the Inbox on the hard drive.

■Exchanging business cards

Simultaneously exchange your business card with one belonging to another party.

1. Turn on the PC or PDA

Confirm that a *Bluetooth* wireless technology connection has been enabled before proceeding.

proceeding.

2. Open *Bluetooth* Information Exchanger

Note

- Please refer to [Contents of the *Bluetooth* Utility](#) on how to open *Bluetooth* Information Exchanger

3. Double-click on the [Object Push] icon

A list of devices will appear in the [Object Push] window.

Note

- If the desired device does not appear in the list, please confirm that the device has been turned on, and then select [*Bluetooth*] → [Search Devices]. A device search will be performed.

4. Right-click on the icon of the party with whom you wish to exchange business cards, and then click on [Object Push]

The business card from the party who executed the "Exchange business cards" command will be sent first.

Note

- When you try to send a business card, a message requesting permission to receive the files may appear on the device belonging to the other party (i.e., on the receiving end). The content of the message will vary with the software installed on the destination device, so please be sure to follow the instructions provided.
If you are using the *Bluetooth* Utility, a message will appear.

A message of confirmation will appear if the card has been successfully sent.

Note

- Business cards that have been sent will be saved in the Inbox of the destination party.

Once your business card has finished being sent, the program will start receiving the business card belonging to the other party.

Note

- When a business card is to be received, a message may appear on the device belonging to the other party.

belonging to the other party.
Please click on the [Yes] button if you give permission for the business card to be sent.

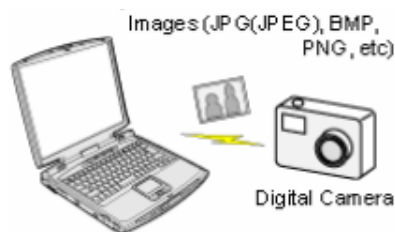
A message of confirmation will appear if the card has been successfully received.



- Business cards that have been received will be saved in the "Inbox" under "Object Push".
You can use the Settings on [[Bluetooth Information Exchanger](#)] tab in [Options] to change the location of the Inbox on the hard drive.

Using a *Bluetooth* wireless technology-compatible camera [BIP]

By connecting a *Bluetooth* wireless technology-compatible digital camera to your PC, you will be able to operate the camera shutter from the PC and transmit captured images to it as well.



- [Connecting the camera](#)
- [Taking pictures](#)
- [Viewing images saved on your PC](#)

Connecting the camera

Use the "Remote Camera" tool in the *Bluetooth* Utility to connect the camera to your PC.

Procedure

1. Click on [Start] → [All Programs] → [[Bluetooth](#)] → [[Remote Camera](#)]

1. Click on [Start] → [All Programs] → [*Bluetooth*] → [Remote Camera]

 **Note**

- In Windows 2000, click on [Start] → [Programs] → [*Bluetooth*] → [Remote Camera].

The [Remote Camera] window will appear.

2. Turn on the camera, and set it to be connectable via *Bluetooth* wireless technology

 **Note**

- Different cameras are operated in different ways, depending on the manufacturer and model used. Please refer to the instruction manual for further details on how to operate your camera.

3. Click on the [Camera Search...] button

The camera will be detected and its icon displayed.

4. Right-click on the camera icon, and select [Connect]

The camera will be connected, and images from the camera will appear on-screen.



Taking pictures

By placing the mouse cursor over the on-screen image, the camera's operating window will appear.

You can operate the camera from this window.

Procedure

■ Taking a single picture

1. Click on the  button in the operating window.

A single image will be captured and sent to the PC.

A single image will be captured and sent to the PC.

■ Taking several consecutive frames

1. Click on the  button in the operating window

A succession of images will be captured and sent to the PC.

Note

- The remote camera shutter cannot be operated while the camera is connected to the PC.
- The number of consecutive pictures taken can be set to anywhere between 2 and 16
 1. In the [Remote Camera] window, click on [*Bluetooth*] → [Properties] → [Consecutive Image Settings]

The [Change number of consecutive images] dialog box will appear
 2. Click on the [<][>] buttons to select the number of consecutive images to be captured

Important

- Images are not only sent to the PC, but are stored in the camera's on-board memory as well.
Please be aware of the remaining memory capacity when you are taking a large number of pictures.
- Large file sizes are common for high-resolution images, and may take some time to be transferred to the PC.

Viewing images saves on your PC

A "Remote Camera" folder will be created in the "*Bluetooth*" folder under "Documents" during initial set-up. A folder bearing the same name as the camera will be created in it, and images will be saved there.

Click the [Explorer] button in the [Remote Camera] screen to display the folder where the images have been saved.

Note

- In Windows XP, a folder called "Remote Camera" will be created in the "*Bluetooth*"

- In Windows XP, a folder called "Remote Camera" will be created in the "Bluetooth" folder under "My Documents."

● Synchronising information using ActiveSync [SPP]

This section describes how to synchronize information on your PDA (calendars, contacts, inboxes etc) with your PC using Microsoft ActiveSync.

When you connect via *Bluetooth* wireless technology instead of with a standard cable, you will always be able to synchronise your data without the hassle of having to connect the cable.



- [Connecting using ActiveSync](#)
- [Establishing a partnership between ActiveSync and a PDA](#)
- [Finishing an ActiveSync connection](#)
- [Canceling a partnership](#)

★ Important

- Please use ActiveSync v.3.7 or higher. Also please establish a partnership between the devices using a USB or infrared link before you connect via *Bluetooth* wireless technology.
- Please refer to the ActiveSync Help or other manuals for information on how to use the application.
- Microsoft Outlook 2002 or another schedule management tool must also be installed on the PC.
- The associated operating procedure under Windows 2000 and Windows XP shall be described.

● Connecting using ActiveSync

Both the PC and PDA must be set up in order for a connection to be established.

■ Preparing the PC

■Preparing the PC

Procedure

1. On the PC, click on [Start] → [All Programs] → [Microsoft ActiveSync]

The initial ActiveSync set-up window will appear.

It is assumed in the explanation below that no ActiveSync connections have been

established with other devices.

2. Click [File] → [Connection Settings]

The [Connection Settings] window will appear.

3. Place a check next to [Allow serial cable or infrared connection to this COM port], and then select "COM7".

Note

- In the standard set-up, the port is configured to "COM7" (refer to Steps (3) and (4) under "Preparing the PDA" below). When using a different port, please also change the port number selected in this window.

■Preparing the PDA

Procedure

1. Tap on the *Bluetooth* wireless technology icon in the bottom right of the screen

Important

- The connection procedure may be different depending on the manufacturer or model of PDA you use. Please refer to the product instruction manuals for further details.

The [*Bluetooth* Settings] window will open.

The message "Connection not registered" will appear if no *Bluetooth* wireless technology device has been registered.

Please tap on [OK] to close the message.

2. Double click on [Tools] → [Search for peripheral components]

The application searches for nearby devices.

3. Tap and hold on the destination PC icon, and then select [Update Services]

A search for services will be carried out, and then a list of service names and their connection status will appear as list in the lower window.

4. Tap and hold on "COM7" from the list of service names, and then select "Register ActiveSync".

5. Tap [OK] in the confirmation message window

An ActiveSync connection will be initiated.

 **Establishing a partnership between ActiveSync and a PDA**

Once a connection has been successfully established with a PDA, the procedure for establishing a partnership with the PDA will be started by the ActiveSync application on the PC.

Performing this set-up procedure will enable data to be synchronised between your PC and PDA.

 **Procedure**

1. In the [New Partnership (Set Up a Partnership)] window, select "Standard partnership", and then click on the [Next] button

The [New Partnership (Specify Data Synchronisation Method)] window will appear.

2. Select "Synchronise with this PC", and then click on the [Next] button

The [New Partnership (Select Synchronisation Settings)] window will appear.

3. Select the type of information to be synchronised between your PC and PDA, and then click on the [Next] button

The [New Partnership (Completing Setup)] window will appear.

4. Click on the [Finish] button

When you click on the [Finish] button, ActiveSync will begin to synchronise your information.

[Confirming changes]

↓
(Synchronisation process)

(Synchronisation process)



[Synchronisation complete]

While the ActiveSync connection is active, synchronisation will be performed whenever information is changed on either the PC or the PDA.

Once a partnership has been established, every time you start your PC (and PDA)

thereafter, a *Bluetooth* wireless technology connection will be opened and ActiveSync will synchronise your information.

 **Finishing an ActiveSync connection**

Follow the procedure below on your PDA if you want to end an ActiveSync connection manually.

 **Procedure**

1. Tap and hold on "COM7" in the *[Bluetooth Settings]* window, and select *[ActiveSync Release]*

 **Cancelling a partnership**

Follow the procedure below from the ActiveSync window on the PC if you want to cancel the partnership between your PC and PDA.

 **Procedure**

1. Click on *[File]* → "Delete partnership"

Click on the *[Yes]* button when the confirmation message appears.

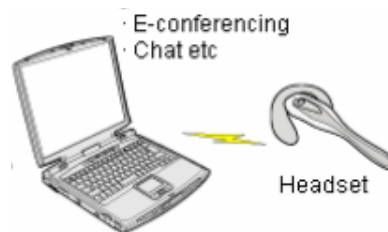
 **Note**

- If you wish to create another ActiveSync connection, you will have to repeat the above procedure to re-establish a partnership.



Using a headset/handsfree set to communicate [HSP/HFP]

This section provides a description of how to use a *Bluetooth* wireless technology-compatible wireless headset/handsfree set to communicate (chat) using Microsoft NetMeeting or other software.



- [Registering the headset/handsfree set](#)
- [Making a connection to the headset/handsfree set](#)
- [Disconnecting from the headset/handsfree set](#)

Registering the headset/handsfree set

Procedure

1. **Right-click on the *Bluetooth* wireless technology icon in the tasktray, then click on [Add New Connection Wizard]**

Note

- Alternatively, you can click on [Start] → [All Programs] → [*Bluetooth*] → [*Bluetooth Settings*], then click on [New Connection] in the [*Bluetooth Settings*] screen that has opened.

The [Add New Connection Wizard (Welcome to the Add New Connection Wizard)] screen will appear.

2. **Turn the headset/handsfree set power on**

Once you have turned on the headset/handsfree set, set the mode to enable a connection.

Important

The procedure for operating the headset/handsfree set may differ depending

- The procedure for operating the headset/handsfree set may differ depending on the manufacturer and model.
Please consult your user guide for a detailed description of how to operate the unit.

3. Confirm that [Express Mode] has been selected, then click on the [Next] button

The [Add New Connection Wizard (Searching for *Bluetooth* devices)] screen will

appear.

Once the device search has been completed, the [Add New Connection Wizard (Select a Device)] screen will appear.



Note

- If you cannot configure the device in "Express Mode", please use "Custom Mode" instead.

4. Select the name of the headset/handsfree set device from the list, then click on the [Next] button

5. Answering with the headset

If the service has been properly detected, a screen will appear indicating that the headset is being called, and a tone will accordingly sound in the headset.

Please press the headset switch.



Important

- The procedure for operating the headset may differ depending on the manufacturer and model.
Please consult your user guide for a detailed description of how to operate the unit.

The [Add New Connection Wizard (Configuring (Connecting to Voice Circuit))] screen will appear, and device configuration will be performed.



Note

- If you are connecting to the headset for the first time, or if another audio device has not yet been registered, the following [Found New Hardware Wizard] screen will appear, from which you can proceed to install the driver.

If another audio device has already been registered (i.e., the driver has been installed), you can proceed to Step 9 without having to install the driver.

- This process does not pertain to handsfree sets.

6. Click on the [Next] button

The [Install Hardware] screen will appear.

7. Click on the [Continue Anyway] button

The following screen will appear automatically. You may disregard it and click on the [Continue Anyway] button.

The [Add New Connection Wizard (Completing the Found New Hardware Wizard)] screen, which is the final screen of the installation wizard, will appear.

8. Click on the [Finish] button

Once driver installation is complete, click on the [Finish] button.

The configuration information will be registered, and an icon will be displayed in the [Bluetooth Settings] screen.



● Making a connection to the headset/handsfree set

You can make a connection to the headset/handsfree set from an icon that has been registered in [Bluetooth Settings].

★ Important

- Before making a connection to the headset/handsfree set, please be sure that the device is turned on and that it has been enabled for a Bluetooth wireless technology connection.
Please ensure that the following audio-related applications have been closed before you connect the headset/handsfree set to your PC.
 - Windows Media Player, BeatJam, InterVideo WinDVD and other music/audio playback software
 - Windows Messenger and other e-conferencing software

If you wish to use these applications, please terminate the headset/handsfree set connection before launching.

Procedure

1. **Right-click on the headset/handsfree set icon, then click on [Connect].**
2. **Answer with the headset**

A screen will appear indicating that the headset is being called, and a tone will accordingly sound in the headset.
Please press the headset switch.

If the connection has been properly established, the icon's appearance will change to indicate a connected state.

Note

- This process does not pertain to handsfree sets.



You may now launch conferencing and voice-recognition software and use the headset.

Disconnecting from the headset/handsfree set

Please follow the steps below to disconnect from the headset/handsfree set.

Procedure

1. **Right-click on the headset/handsfree set icon in the [Bluetooth Settings] screen, then click on [Disconnect].**

A message will appear, requesting confirmation that you wish to disconnect. Click on the [Yes] button.

The icon on the [Bluetooth Settings] screen will appear as shown below, indicating that the device has been disconnected.



Making a device undiscoverable to other users

For security purposes, you may not wish your device to be detected by other users. The procedure for accomplishing this is provided below.

Procedure

1. Right-click on the *Bluetooth* wireless technology icon in the task tray, click on [Options] and select [security] tab.

The [Bluetooth Security Level] will appear.

2. Select [Custom Level ...] in [Bluetooth Security Level] under [security] tab.
3. Check the [Not Discoverable] in Mode on [Security Settings]

Your device will now be undetectable by other users, even when they search for other devices.

Note

- Other devices are still able to establish connections with your device even if you have enabled the Non-discoverable mode.
Please enable "Connection denied" if you wish to reject connections from other devices.

Related topic: "[Bluetooth Manager](#)"

Encrypting the content of your transmissions

Since *Bluetooth* wireless technology is conducted wirelessly, there is always the possibility that a third party may be able to intercept your transmissions.

You can use encryption to render the content indecipherable to anyone who manages to intercept it.

intercept it.

Important

- Encrypting your transmissions will still not guarantee complete security. Accordingly, please be aware that transmitting data is conducted with an element of risk for the user.

Procedure

1. **Right-click on the *Bluetooth* wireless technology icon in the task tray, click on [Option] and select [security] tab.**

The [*Bluetooth Security Level*] will appear.

2. **Select [Custom Level ...] in [*Bluetooth Security Level*] under [security] tab.**
3. **Check the Link level enforced security [Authentication and encryption] in [Link Level Enforced Security] on [Security Settings]**

Your device will now be encryptable by other users, even when they connect for other devices.

Note

- Once you have configured the security mode, a window will appear when you first make a connection to another device, prompting you to enter a *Bluetooth* passkey (PIN code).
Please click on the [OK] button after you have entered the passkey.
- The window in which you enter the passkey will not appear once you have connected more than two times to the device.

Related topic: "[Bluetooth Manager](#)"

Changing the default connection

The "default connection" refers to the dial-up connection configured for use whenever a connection is made to the Internet.

connection is made to the Internet.
If several connections have been registered, you can change the default connection by following the procedure below.

Procedure

1. Start Internet Explorer

2. Click on [Tools] → [Internet Options...]

The [Internet Options] window will appear.

3. Click on the [Connections] tab

Change the settings so that "London A (as a sample)" will always be dialed when you connect to the Internet.

4. Select "Always dial my default connection"

5. Click on "London A", and then click on the [Set Default] button

"London A" has been changed to the default connection.

Note

- Alternatively, if you wish to connect to the Internet from a LAN in a company or other environment where a LAN can be accessed, select "Never dial a connection" if you have a dial-up configuration, but do not want dial-up to occur automatically.
- When connecting to the Internet via a LAN, you must enter the appropriate LAN settings under [LAN Settings...].

Sending business card data from Outlook

This section describes how to send business card data wirelessly using Microsoft Outlook

Note

- The explanation below relates to an example in which Microsoft Outlook 2002 or higher has been used to perform the procedure. Subtle differences may arise when using other

has been used to perform the procedure. Subtle differences may arise when using other versions of the software.

Sending business card data

You can send business card data directly from the "Contacts" window in Outlook.

Procedure

1. **Start Microsoft Outlook, and open the "Contacts" window**
2. **Double-click on the contact whose details you wish to send as a business card**

The details of the contact you selected will appear.

3. **Click on the [to *Bluetooth*] from the toolbar**

The [Device List] window will appear.

Note

- If the [to *Bluetooth*] button does not appear on the toolbar, please refer to [Installing business card-sending functionality in Outlook as an Add-in](#) below and change the settings accordingly.

4. **Select the destination for the business card data, and then click on the [Send] button**

Note

- If you cannot find the destination device in the list, please click on the [Searching for devices] button to discover it.

The business card will be sent.

Note

- If the transmission was unsuccessful, please attempt to send the data once more after having confirmed the operating conditions (power status, security settings, etc) of the destination device.

■ Installing business card-sending functionality in Outlook as an Add-in

You can install one of the functions of the *Bluetooth* Utility in Outlook as an "Add-in", which will enable you to send business cards from the Outlook toolbar.

Procedure

1. Launch Outlook with Administrator access

Right-click on the [Outlook icon] from Quick Start, and click on [Run as Administrator...].

When the User Account Control dialog appears, click on [Continue].

Exit the application if it is running in non-administrator access mode.

2. Click on [Tools]—>[Options] in Outlook

The [Options] dialog will appear.

3. Click on the [Other] tab, and click on the [Advanced Options...] button under the [General] menu

The [Advanced Options] dialog will appear.

4. Click on the [COM Add-Ins...] button

The [COM Add-Ins] dialog will appear

5. Click on the [Add...] button

The [Add Add-In] dialog will appear.

6. Select "TosBTAddin.dll," and click the [OK] button



- The location of "TosBTAddin.dll" on the hard disk is shown below.
C:\Program Files\Toshiba\Bluetooth Toshiba Stack\LANG\ENU

7. Quit out of Outlook, and relaunch normally (i.e., not as an Administrator)

The procedure will then be complete.

Procedure (Windows XP and Windows 2000)

1. Click on [Tools]-[Options...] in Outlook

1. Click on [Tools]-[Options...] in Outlook

The [Options] dialog box will appear.

2. Select the [Other] tab, and then click on the [Advanced Options...] button in the "General" field

The [Advanced Options] dialog box will appear

3. Click on the [COM Add-Ins...] button

The [COM Add-Ins] dialog box will appear.

4. Click on the [Add...] button

The [Add Add-In] dialog box will appear.

5. Select "TosBTAddin.dll", and then click on the [OK] button



- "TosBTAddin.dll" can be found on the hard drive at the address below.
C:\Program Files\Toshiba\Bluetooth Toshiba Stack

6. Confirm that "Send to *Bluetooth*" has been added to the list and that a check appears next to it, and then click on the [OK] button

This will complete the Add-in process.

Manually creating a virtual *Bluetooth* COM port

In order for a PC to connect to and communicate with a *Bluetooth* wireless technology device, the *Bluetooth* Utility will create a gateway for data to be exchanged between the respective devices. This gateway is known as a "port" (or "virtual COM port").

Since one virtual COM port will be allocated to each device, trouble-free communication will still be possible even if several devices are being used.

When you use the *Bluetooth* Utility, a virtual COM port will be automatically created on set-up; however, virtual COM ports can be created manually if so needed.



Note

- *Bluetooth Manager* must be active in order for you to be able to use *Bluetooth Local COM*.

Clients and servers

When *Bluetooth* wireless technology communications are performed, there will always be a "client/server" relationship between the various devices. A "client" is a device that sends certain requests to another device, while a "server" is a device that provides a service on receipt of such requests from another device.

For example, when a PC issues a print command to a wireless printer, the PC functions as the client, while the printer functions as the server.

When a PDA or other device attempts to receive files located on a PC by means of file transfer protocol, the PC functions as the server, while the PDA functions as the client.

Virtual *Bluetooth* COM ports can be created both for clients and servers.

- ***Bluetooth* virtual COM port for a client**
Virtual COM port used when your device is the client, and requests are sent to another device.
- ***Bluetooth* virtual COM port for a server**
Virtual COM port used when your device is the server, and requests are received from another device.

Creating a virtual COM port

Bluetooth virtual COM ports are created according to the procedure below.

Procedure

1. Select [Start]→[Control Panel], and double-click the [Hardware and Sound] icon

The [Printers and Other Hardware] screen will appear.



- If the Control Panel is displayed in "Classic View" and you are running Windows 2000, skip to Step 2.
- If you are running Windows XP, double-click on the [Printers and Other Hardware] icon.

2. Double-click on the [*Bluetooth Local COM*] icon

The main *Bluetooth Local COM* window will appear.



- Even when the Control Panel appears in Classic view, please simply click on the [*Bluetooth Local COM*] icon.
- No such distinction between viewing formats exists in Windows 2000.

3. Click on the [Add...] button

The [*Bluetooth Local COM Wizard*] window, from where you can create a virtual COM port, will appear.

Start from this window when creating *Bluetooth* virtual COM ports for either servers or clients.

- [Creating a *Bluetooth* virtual COM port for a client](#)
- [Creating a *Bluetooth* virtual COM port for a server](#)

Deleting a virtual COM port

Please follow the procedure below to delete a virtual COM port when it is no longer needed.



- You can only delete virtual COM ports created by the *Bluetooth Local COM* utility.

1. Select the port you wish to delete from the [*Bluetooth Local COM*] window, and then click on the [Delete] button

A message will appear asking you to confirm that you wish to delete the port.

2. Click on the [Yes] button

The port will be deleted.

3. Click on the [OK] button

Optional Properties

This section describes the settings categories for each of the tabs in the Optional Properties window.

Note




The contents in the following description fields are explanatory notes, not same as messages on screen.

[General] tab

Category	Description	
Device name	Shows the name of your device. (Can be changed)	
Device address	Shows the address of your device. (Cannot be changed)	
Device Type	Sets to display the model of your device as desktop or laptop. (Can be changed)	
Detail	Shows the detailed information of your device. (Cannot be changed)	
Tray Icon	Allows you to select two types of icons for <i>Bluetooth</i> Manager. When “Hide” is selected, the icon will not be displayed. Cancel the “Hide” setting when you are required to check the connection status using the icon. (Can be changed)	
Service to enable	<i>Bluetooth</i> Information Exchanger Service	Ticking the box enables a (server) function that allows files, images and business cards to be transferred from a remote device using <i>Bluetooth</i> Information Exchanger.
	PAN Group Networking Service	Ticking the box enables a (server) function that allows networking to be performed from a remote device using the PAN Networking Service.
	Enable DHCP service	Ticking this option will enable the DHCP service along with the PAN server function. This setting can only be enabled if PAN Group Networking Service has been enabled.

<i>Bluetooth</i> COM Port Service	Ticking the box enables a (server) function that allows COM Service to be performed from a remote location using the Serial Port Service.
AV Remote Control Service	Ticking the box enables a (server) function that allows remote control to be performed from a remote device using the AV Remote Control

	Service.
--	----------

 **Note**

The default device name is the name of your computer. The device address is set for every module.

Please select the model type that you are using for the Model to use. It may be used to differentiate destination devices (for example, as a device icon display).

 **[Security] tab**

Sets the security settings in Slider. High, Medium, Standard, Low and Customize (individual settings possible) can be set for the security level. The authentication information (link key) can also be deleted

<i>Bluetooth</i> Wireless Technology Security Level			
Category	Description		
Slider	Sets security level in Slider. High, Medium, Standard, Low and Customize (individual settings possible) can be set for the security level.		
File Transfer Password	Allows you to set a password for file transfer when using file transfer protocol (FTP).		
Level customization	Sets individual settings for customized security levels. Individual settings are set here when combinations other than the High, Medium, Standard and Low security levels are used. <table border="1" data-bbox="730 1883 1430 2000" style="margin-left: auto; margin-right: auto;"> <thead> <tr> <th>Settings for each mode</th> </tr> </thead> <tbody> <tr> <td>Not Discoverable</td> </tr> </tbody> </table>	Settings for each mode	Not Discoverable
Settings for each mode			
Not Discoverable			

Connection denied

New Authentication denied

Link level enforced security[Authentication and encryption]

Protect against MITM (man in the middle) attack (V2.1)
--

Non bondable mode (V2.1)

Secure Simple Pairing (SSP) (v2.1)

<i>Bluetooth</i> Information Exchanger security level settings (Displays confirmation message when responding to incoming files)

Apply a password on file transfer (FTP)

Display a confirmation message on receiving through File Transfer[FTP]
--

Display a confirmation message on receiving through Object Push[OPP]
--

Display a confirmation message on receiving through Imaging Transfer[BIP]

Related topics

→ "[\[Service security\] on *Bluetooth* Information Exchanger](#)"

Note

You can also set the directory to save received files in the confirmation message. The changed directory will be enabled.

Whether the following items appear as intended will depend on how your PC has been configured.

- Protect against MITM (man in the middle) attack (V2.1)
- Non bondable mode (V2.1)
- Secure Simple Pairing (SSP) (v2.1)


With some devices, you may not be able to establish the connection if you check Protect against MITM (man in the middle) attack (V2.1).

You may see a dialog urging you to authenticate every time when you check Non bondable mode (V2.1).

Secure Simple Pairing (SSP) (v2.1) settings cannot be changed.

Service level security
Security Setting of File Transfer[FTP]
Performs authentication and encryption (Server)
Performs authentication and encryption (Client)
Security Setting of Object Push[OPP]
Performs authentication and encryption (Server)
Performs authentication and encryption (Client)
Security Setting of Imaging Transfer[BIP]
Performs authentication and encryption (Server)
Performs authentication and encryption (Client)
Security Setting of Serial Port[SPP]
Performs authentication and encryption (Server)
Performs authentication and encryption (Client)
Security Setting of Headset[HSP/HFP]
Performs authentication and encryption (Server)
Performs authentication and encryption (Client)
Security Setting of Personal Area Network[PAN]
Performs authentication and encryption (Server)
Performs authentication and encryption (Client)
Security Setting of Mouse[HID]
Performs authentication and encryption (Server)
Performs authentication and encryption (Client)

Security Setting of Audio[A2DP]	
Performs authentication and encryption (Server)	
Performs authentication and encryption (Client)	
Security Setting of Audio Remote Control (AVRCP)	

Performs authentication and encryption (Server)	
Security Setting of Printer[HCRP]	
Performs authentication and encryption (Client)	
 Note Data encryption can be applied for each category in the service level security.	
Default	Returns the <i>Bluetooth</i> security level to the default value.
Delete Paired Device Information	
Category	Description
View Paired Devices	Deletes authentication information for individual destination device that has been authenticated.
Delete All	Deletes authentication information for all destination devices that have been authenticated at one go.

 **[Bluetooth Information Exchanger] tab**

Displays or changes the settings used in *Bluetooth* Information Exchanger.

Category	Description
<i>Bluetooth</i> Information Exchanger location	Shows the position of <i>Bluetooth</i> Information Exchanger's Icon. When the position is My Network, a shortcut can be placed as an option on the desktop.
Recent <i>Bluetooth</i> device list	Right-clicking the file or folder clears the Sent Device Log that is displayed during file transfer.

List	
Settings	Displays or changes the advanced settings used in <i>Bluetooth Information Exchanger</i> . -[File transfer] tab -[Object push] tab -[Image transfer] tab

	-[Associate] tab -[Preferred profile] tab -[Display filtering] tab -[WFTP] tab
--	---

[Other] tab

Performs settings for COM Auto Connect, AV player selection , copyright protection and HID profile Wake up (from suspend).

Com Auto Connect settings

COM Auto Connect settings	
Category	Description
Settings	Displays the port name and the related connection name. You can select the COM port to be set automatically.

AV Player selection

AV player selection		
Category	Description	
Settings (Select AV Player)	Category	Description
	Music file playback	Select the program to be used in music playback..
	CD audio playback	Select the program to be used in CD audio.
	DVD playback	Select the program to be used in DVD playback.

	CD/DVD drive	Drive device name to be used in CD/DVD
	Check Box	Music file playback is prioritised, regardless of media in drive
Settings (Display setting)	Category	Description

of receiving command)	Display position	You can set the location to display commands for playback or pause on the desktop.
Return to default	Return all settings to the default	

AV Profile Copyright Protection Settings

AV profile Copyright Protection Settings	
Description	
SCMS-T format is supported in AV profile as Copyright Protection according to the message in this field.	

HID Profile Wake up Settings

The HID devices registered in *Bluetooth* Settings are shown in the list. Select a device from the list to be "woken up."

HID Profile Wake up Settings	
Category	Description
Settings	Lists the type and connection name of the HID devices registered in <i>Bluetooth</i> Settings

Note

- Support for this function is highly dependent on certain conditions relating to the hardware in your PC. If your PC does not fulfill these conditions, the setting category will not appear, and thus cannot be accessed.
- The effect of the function is guaranteed to occur only if the PC is used in combination with the supplied keyboard and mouse.

combination with the supplied keyboard and mouse.

 **[Diagnostics] tab**

There are some diagnostic functions. Selects the appropriate one as the need arises. These are maintenance purpose only.



 **Bluetooth Settings**

This section provides detailed information on the [Bluetooth Settings] window.

 **Main window**



 **Menu**

■ **[Bluetooth] menu**

Category	Description
Add New Connection	Opens the [Add New Connection Wizard] window, and then searches for new devices.

Connect	Connects to selected device.
Disconnect	Disconnects from selected device.
Detail...	Displays detailed information about selected device.
Delete	Deletes selected device.
Create shortcut	Creates a shortcut icon for the selected device on the Desktop.

on Desktop	
Rename	Changes the name of the device you have selected.
Change Icon	Changes the icon of the device you have selected.
Options	Opens the [Options] Sheet and you can set the optional properties.
Exit	Closes the [Bluetooth Settings] window.

■[View] menu

Category	Description
Large icons	Changes the way icons are displayed on a device.
Small icons	
List	
Details	

■[Help] menu

Category	Description
Help	Opens the <i>Bluetooth Utility User Guide</i> .
About	Displays the " <i>Bluetooth Settings</i> version information".

2 Device List

Displays a list of devices that have been registered in [\[Bluetooth Settings\]](#).

3 Function buttons

Category	Description
New Connection	Opens [Add New Connection Wizard] window.
Detail...	Shows details of selected device.
Delete	Deletes selected device.

One-touch connection to *Bluetooth* wireless technology devices

Creating a Shortcut

If you have created a shortcut icon on the Desktop, you can easily establish a connection to a device that has been registered using *Bluetooth* Settings without having to open the [*Bluetooth* Settings] window.

Procedure

1. **Right-click on *Bluetooth* wireless technology icon in task tray and click on [*Bluetooth* Settings]**

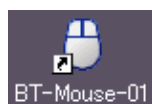
Note

- Alternatively, you can click [Start] → [All Programs] → [*Bluetooth*] → [*Bluetooth* Settings].

The [*Bluetooth* Settings] screen will appear, from where you can create a Shortcut entitled "*Bluetooth* Mouse."

2. **Right-click on the mouse registration icon, and then click on [Create Shortcut on Desktop]**

A shortcut icon of the mouse will appear on the Desktop.



■ Establishing a connection from the Shortcut

1. Double-click on the mouse registration icon from the Desktop

The [*Bluetooth Settings*] window will open.

2. Turn on the mouse, set it to connectable mode, and then click on the [OK] button

in the [*Bluetooth Settings*] window.

The mouse will be connected.



● Manually connecting to a *Bluetooth* wireless technology device

After a keyboard or mouse (HID profile), printer (HCRP or SPP profiles), or other device has been set up for the first time, subsequent connections will be automatically restored whenever you operate the device, print out a document from the PC, or perform another similar activity.

Should the connection not have been properly restored, please establish a manual connection to the device using the procedure below.

Procedure

1. Right-click on *Bluetooth* wireless technology icon in task tray and click on [*Bluetooth Settings*]

Note

- Alternatively, click [Start] → [All Programs] → [*Bluetooth*] → [*Bluetooth Settings*].

The [*Bluetooth Settings*] screen will appear, from where you can connect a mouse manually.

manually.

2. **Right-click on the mouse registration icon, and then click on the [Connect] button**

The [*Bluetooth Settings*] window will open.

3. **Turn on the mouse, enable connection mode, and click on the [OK] button in the [*Bluetooth Settings*] window.**

The mouse will be connected.



Note

- If you wish to manually disconnect a device, right-click on its icon and click [Disconnect].

When a message appears, click on the [Yes] button.



Changing a connection icon

You can change a device icon that has been registered on the [*Bluetooth Settings*] screen.

Procedure

1. **Right-click on the *Bluetooth* wireless technology icon in the task tray, and then click on [*Bluetooth Settings*]**


Note

- Alternatively, click [Start] → [All Programs] → [*Bluetooth*] → [*Bluetooth Settings*].

The [*Bluetooth Settings*] window will appear. Now try to change the icon for "My Mobile."

2. **Right-click on the "My Mobile" icon, and then click on [Change Icon]**

A list of available icons will appear.

3. **Select the  icon, and then click on the [OK] button**

The new icon will appear.



Changing a connection icon name

You can change the name of a device icon that has been registered on the [*Bluetooth Settings*] screen.

Procedure

1. **Right-click on the *Bluetooth* wireless technology icon in the task tray, and then click on [*Bluetooth Settings*]**

Note

- Alternatively, click [Start] → [All Programs] → [*Bluetooth*] → [*Bluetooth Settings*].

The [*Bluetooth Settings*] window will appear. Now try to change the connection name for "My Mobile" to "Pocket PC."

2. **Right-click on "My Mobile", and then click on [Rename]**

You will now be able to enter a name.



3. Enter "Pocket PC", and then hit the [Enter] key

The new name will appear.



Bluetooth Manager






This section provides detailed information on the settings categories in *Bluetooth Manager*.

Main menu



Category	Description
<i>Bluetooth Settings</i>	Opens [<i>Bluetooth Settings</i>] window.
<i>Bluetooth Information Exchanger</i>	Opens the [<i>Bluetooth Information Exchanger</i>] window.
Wireless File Transfer	Opens the [Wireless File Transfer] window.

Remote Camera	Opens the [Remote Camera] window.
Add New Connection	Opens the [Add New Connection Wizard] window.
Options	Allows you to check and change settings related to <i>Bluetooth</i> wireless technology on your device. Below are the tabs in this option.

	<ul style="list-style-type: none"> -[General] tab -[Security] tab -[<i>Bluetooth</i> Information Exchanger] tab -[Other] tab -[Diagnostics] tab
Disable <i>Bluetooth</i> Radio	<p>Turns off <i>Bluetooth</i> wireless technology power.</p> <p> (Power Off)</p> <p> Important</p> <ul style="list-style-type: none"> • Communication will be disabled if the <i>Bluetooth</i> wireless technology power is switched OFF. The next time you want use it, right-click on the <i>Bluetooth</i> wireless technology icon in the Tasktray, and then click [Enable <i>Bluetooth</i> Radio]. <p> (Power On)</p> <p> Note</p> <ul style="list-style-type: none"> ○ The [Disable <i>Bluetooth</i> Radio] ([Enable <i>Bluetooth</i> Radio]) menu will only appear if the software is supported on your PC's environment.
Help	Displays the <i>Bluetooth</i> Utility User Guide.
About	Displays the <i>Bluetooth</i> Utility version.
Exit	<p>Exits <i>Bluetooth</i> Manager.</p> <p> Important</p> <ul style="list-style-type: none"> • When you exit <i>Bluetooth</i> Manager, <i>Bluetooth</i> wireless technology communications will be disabled. When you next wish to use <i>Bluetooth</i> wireless Technology, please click on [Start]→[All Programs]→[<i>Bluetooth</i>]→[<i>Bluetooth</i> Settings] (in

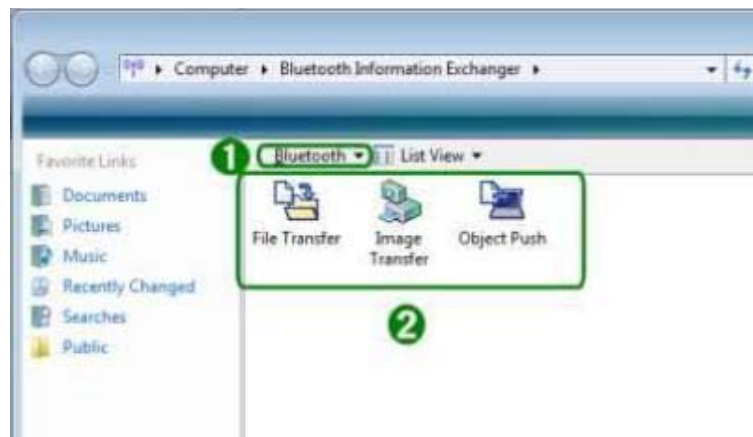
Windows 2000, click on [Start]→[Programs]→[Bluetooth]→[Bluetooth Settings]).



Bluetooth Information Exchanger

This section provides detailed information on the settings categories in *Bluetooth* Information Exchanger.

Main window



[Bluetooth] menu




Category	Description
Device Discovery	Detects <i>Bluetooth</i> wireless technology devices.
Options	Display the menu of [Options]. Select [security] tab → [Custom level] for [Service Security] and select [<i>Bluetooth</i> Information Exchanger] tab → [Advanced] for the others and then allows detailed setting of categories related to <i>Bluetooth</i> Information Exchanger. -[Service security]

	<ul style="list-style-type: none"> -[File transfer] tab -[Object push] tab -[Image transfer] tab -[Associate] tab -[Preferred profile] tab -[Display filtering] tab -[WFTP] tab

Help	Displays <i>Bluetooth</i> Utility User Guide.
About	Display version information.

2 Data exchange folders

Three folders are available for data exchange: "Image transfer", "File transfer" and "Object Push".

Category	Description
 Image Transfer	Click on the icon to display a list of devices. "Image box" is a folder on your PC used for transferring images.
 File Transfer	Click on the icon to display a list of devices. "Shared folder" is a shared folder on your PC used for transferring files.
 Object Push	Click on the icon to display a list of devices. "Inbox" is a folder on your PC used for exchanging business cards.



Remote Camera

This section provides detailed information on the settings categories in Remote Camera.

● Main window



1 Menu

■ [Bluetooth] menu

Category	Description
Device Search	Searches for remote cameras.
Properties	<p>[Device detection filter]</p> <p>The program may discover devices other than digital cameras, depending on which profiles are supported by those devices.</p> <p>Adjusting the setting to "Loose filtering" will increase the likelihood that devices other than those intended will be detected. The further you slide the setting towards "Tight filtering", the stricter will be the criteria determining device detection, and the lower the likelihood will be that irrelevant devices will be included.</p> <p>Please adjust the filtration level according to the results of the search.</p>

[Consecutive image settings]

Allows you to set the number of consecutive images captured by your digital camera (between 2 and 16 inclusive).

[Captured image size settings]

Images will be sent to your PC after having been automatically converted to the size specified in the dialog box below, regardless of the size of the original image data.

[Inbox settings]

Opens the "Browse folders..." dialog box and allows you to select the folder where you would like your captured images to be saved.

Exit

Exits Remote Camera.

■ **[Help] menu**

Category	Description
Remote Camera version information	Displays version information for the Remote Camera.

2 List of cameras

A list of cameras that have been registered as remote cameras will be displayed.

3 [Camera Search...] button

Clicking on this button will execute a search for remote cameras.

4 Display images

Images transferred to the PC from a remote camera will be displayed.

5 [Explorer...] button

Clicking on this button will display the folders on the hard drive where images that have been transferred to the PC have been stored.

Note

- A folder for saving your images will be created automatically.

Camera operation window



1 Camera images

Images as seen through the lens of your remote camera will be displayed.

2 Display magnification

The size of the operating window display can be adjusted from 100% (1x) to 300% (3x).

Important

- Increasing the size of the operating window will impede its ability to display images, and will have an adverse effect on other processes being performed by your PC. Please adjust the magnification as appropriate for your intended use.

3 [Explorer...] button

Clicking on this button will display the folders on the hard drive where images that have been transferred to the PC have been stored.

4 Shutter button (consecutive images)

Clicking this button will cause the camera to take the number of images specified in [Consecutive image settings] under the [Bluetooth] menu and then send those images to your PC.

5 Shutter button (single images)

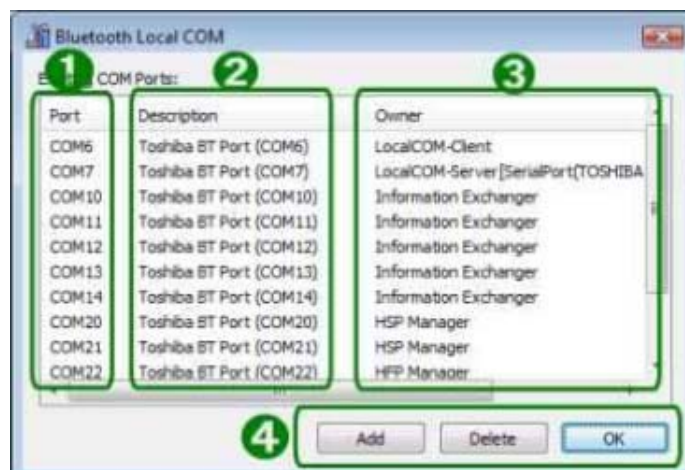
Clicking this button will cause the camera to take one picture and then send the image to your PC.



Bluetooth Local COM

This section provides detailed information on the settings categories in *Bluetooth Local COM*.

Main window



1 Port

Displays a list of configured ports.

2 Description



Displays the function of each port.
Ports displayed as "Toshiba BT Port (COMxx)" are *Bluetooth* virtual COM ports.

3 Owner

Displays the application used to create those COM ports.
The following information will appear for ports created by *Bluetooth Local COM*.

COM port for client	Local COM - Client
COM port for server	Local COM - Server [(name of service supplied by port)]

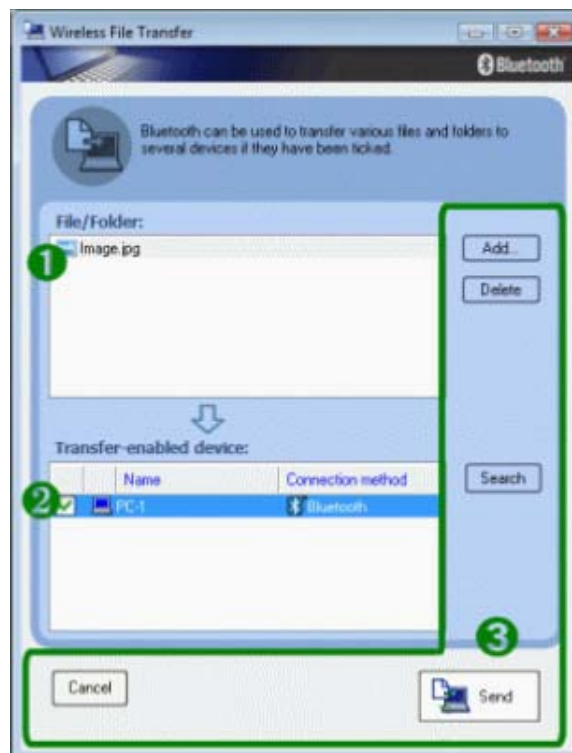
4 Function buttons

Category	Description
Add	<p>Starts the Add COM Port Wizard.</p> <p> Note</p> <ul style="list-style-type: none">• There can be up to 64 ports. If COM ports 1 to 64 already exist, you will not be able to add another port.
Delete	<p>Deletes selected port.</p> <p> Note</p> <ul style="list-style-type: none">• You can only delete COM ports created by <i>Bluetooth Local COM</i>.
OK	<p>Click on this button to confirm settings information, and close the <i>Bluetooth Local COM</i> window.</p>

Wireless File Transfer

This section provides detailed information on the settings categories in Wireless File Transfer.

Main window



1 Files/folders

Displays a list of files/folders to be sent.

2 Devices to which data can be sent/Transfer device: (history)

Displays other devices to which you are able to send files. Files will be sent to those devices that have been checked.

Name

Displays name of destination devices.

Connection method

Displays method used to connect to other devices.

 **Note**

- If a device to which you would like to send data is not listed, you can click on the [Search] button to search for other devices.
- When "Transfer device: (History)" is displayed, shows the history of the devices.

→ "[WFTP] tab"

3 Function buttons

Category	Description
Add	Allows you to add files and/or folders you would like to send.
Delete	By selecting a file from the list and clicking on the "Delete" button, you can remove that file (i.e., the file will not be sent).
Search	Searches for <i>Bluetooth</i> wireless technology devices.
Cancel	Closes the "Wireless File Transfer" window.
Send	Sends a file.