

WB410C user manual



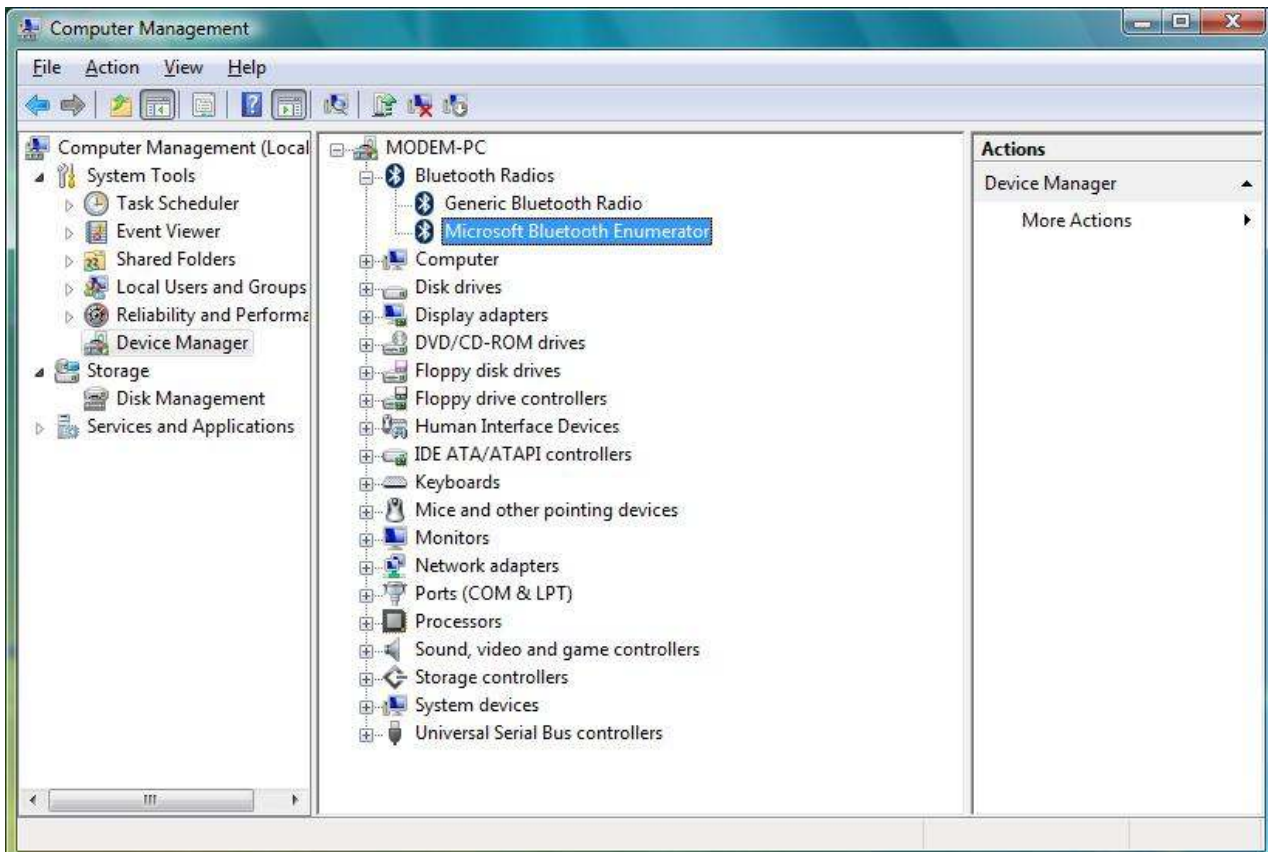
System : vista 32

一、device install

1. Insert BT dongle to PC USB port



2. XP and vista system will install driver automatically

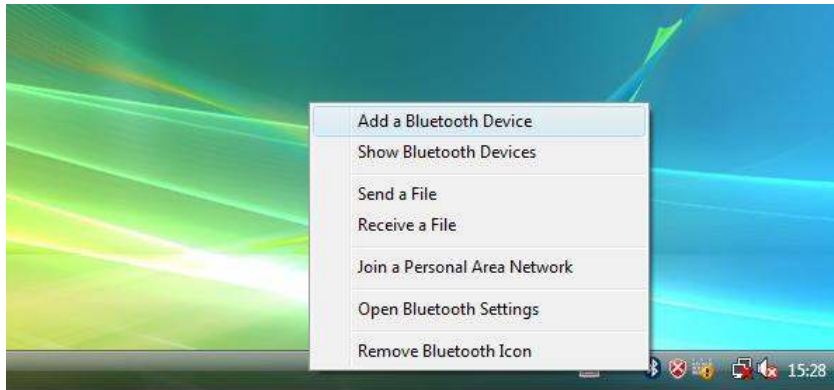


二、Transfer and receive File

1: Connect with PC

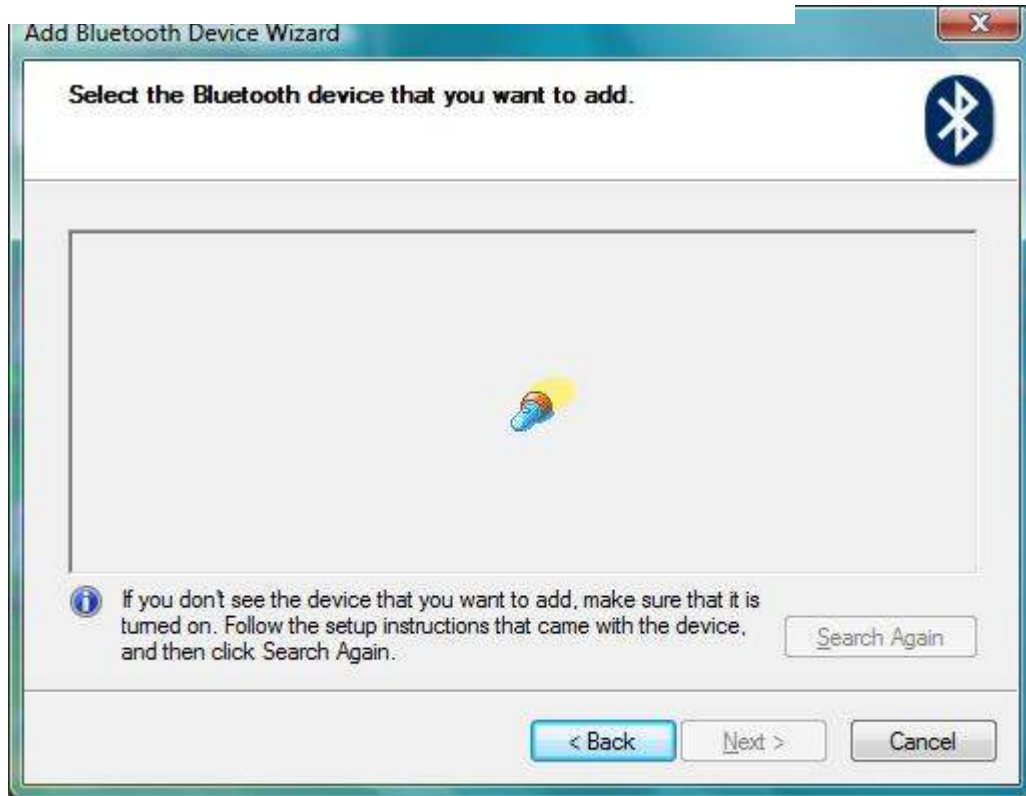
① Plug in BT dongle to PC1 and PC2

② Open BTW program -> add a Bluetooth device



③ select "my device is set up and ready to be found", click "next"

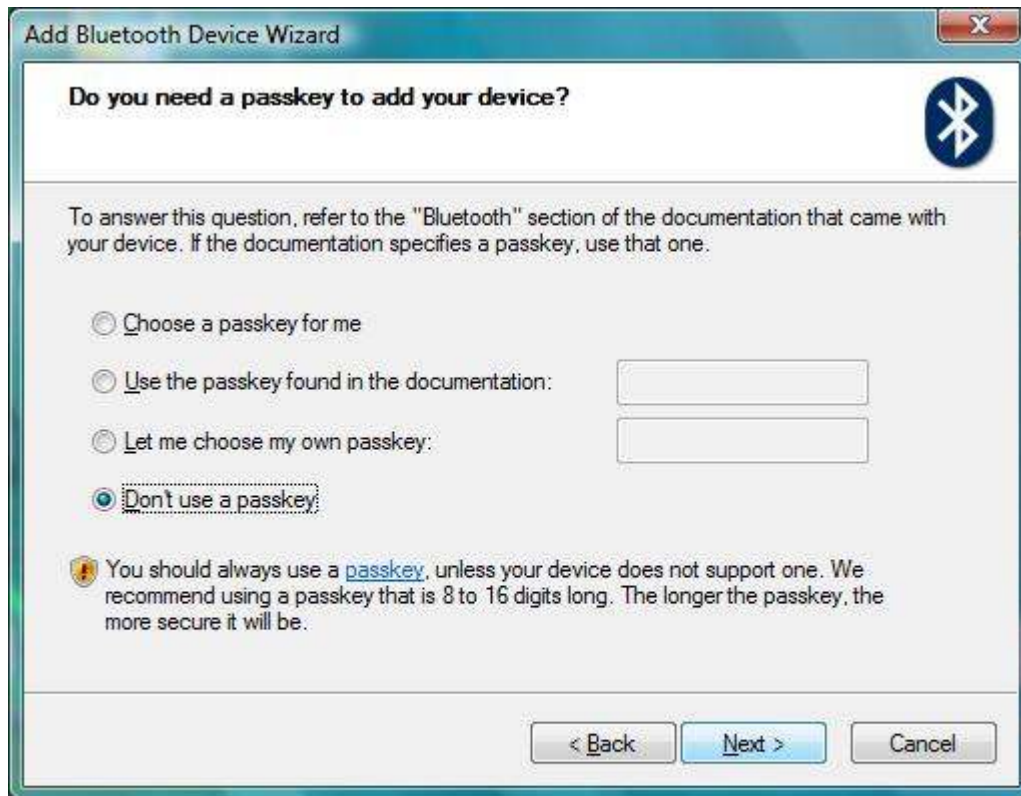




⑤ select computer name of PC2, click “next”



⑥ select don't use a passkey, click "next"



⑦ PC1 successfully connected with PC2

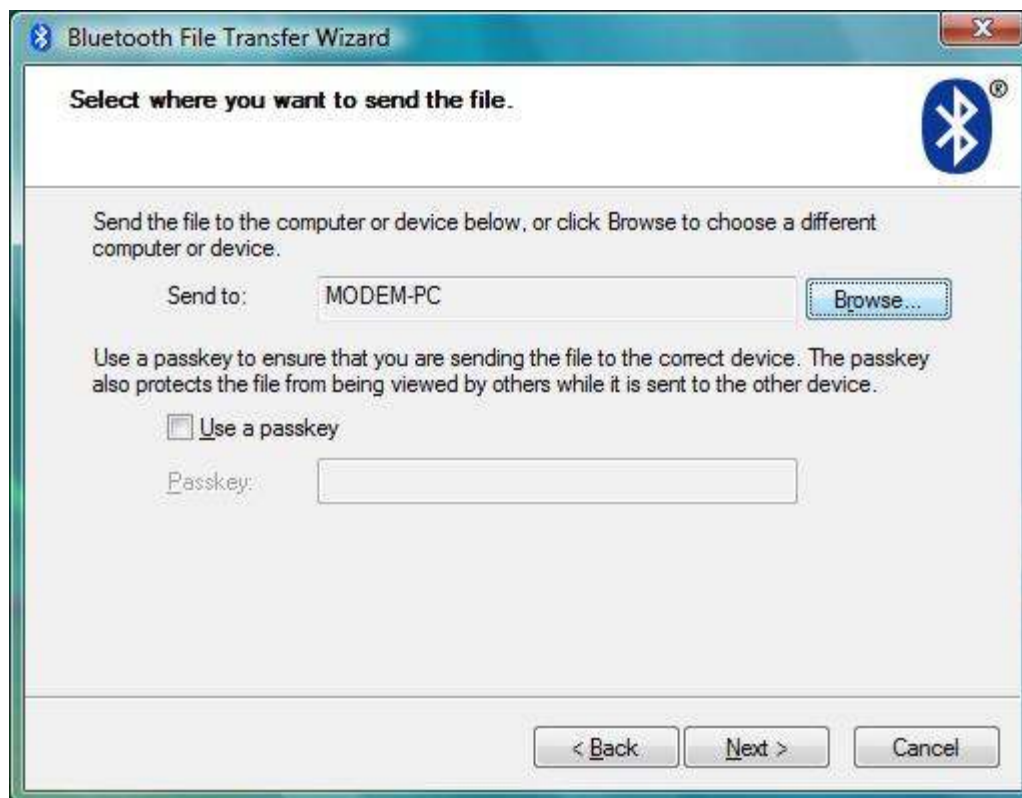


2: Transfer file to a another PC or device

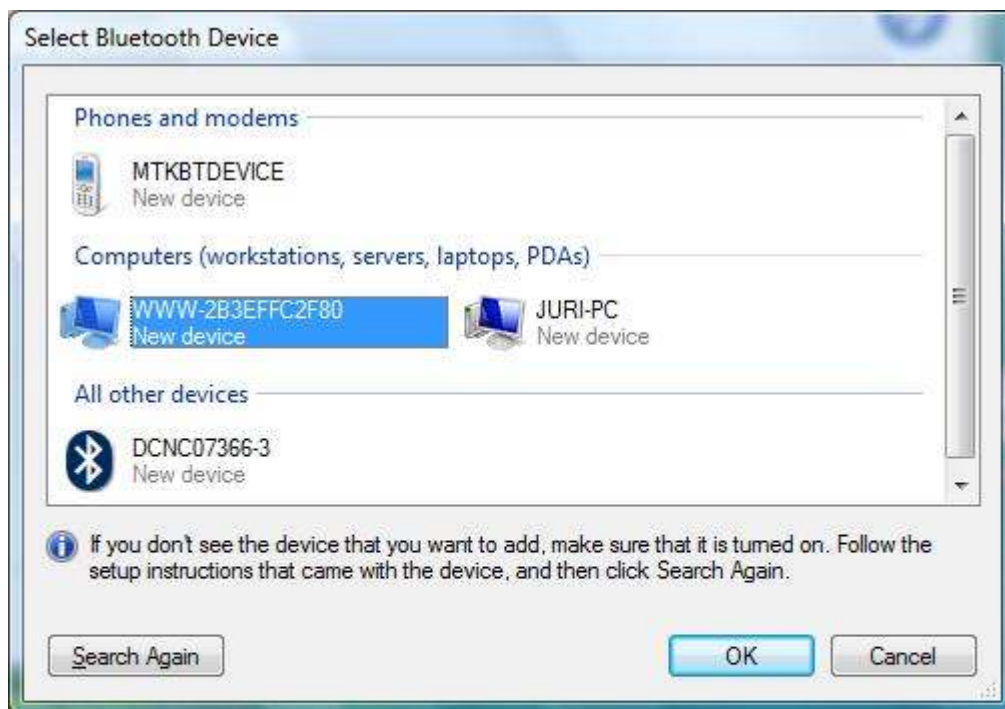
- ① Right Bluetooth icon and click "receive a file" on PC2
- ② Right Bluetooth icon and click "Send a file" on PC1



- ③ click "browse"



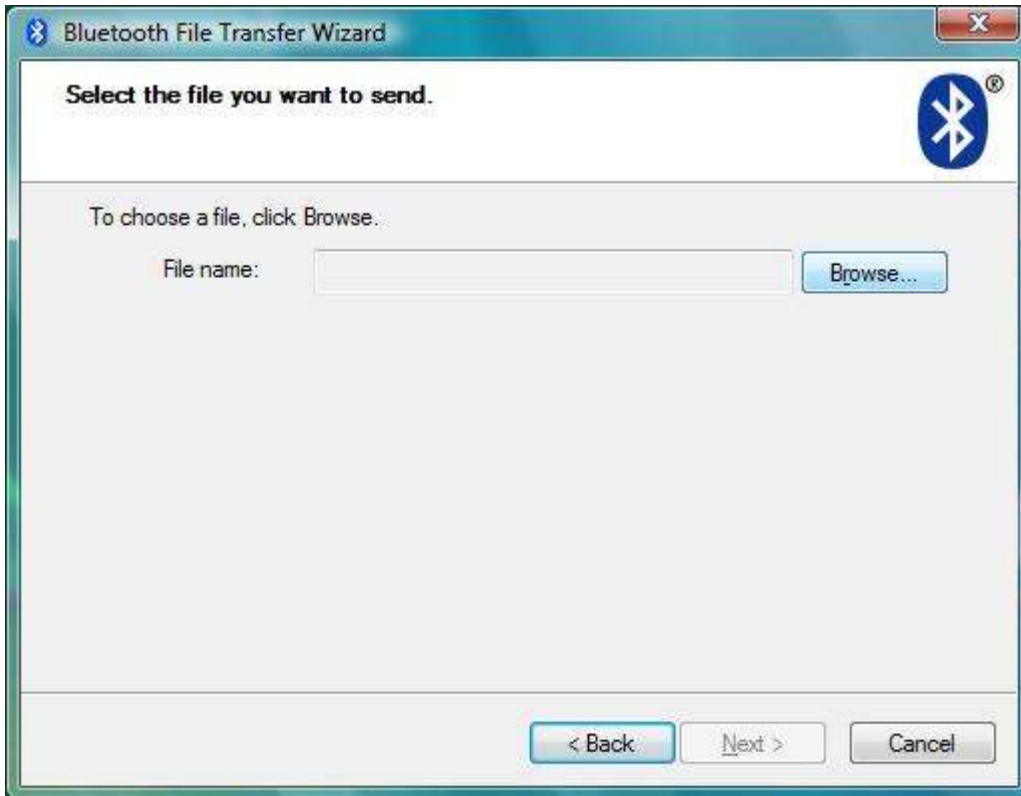
④ select computer name of PC2, click “OK”



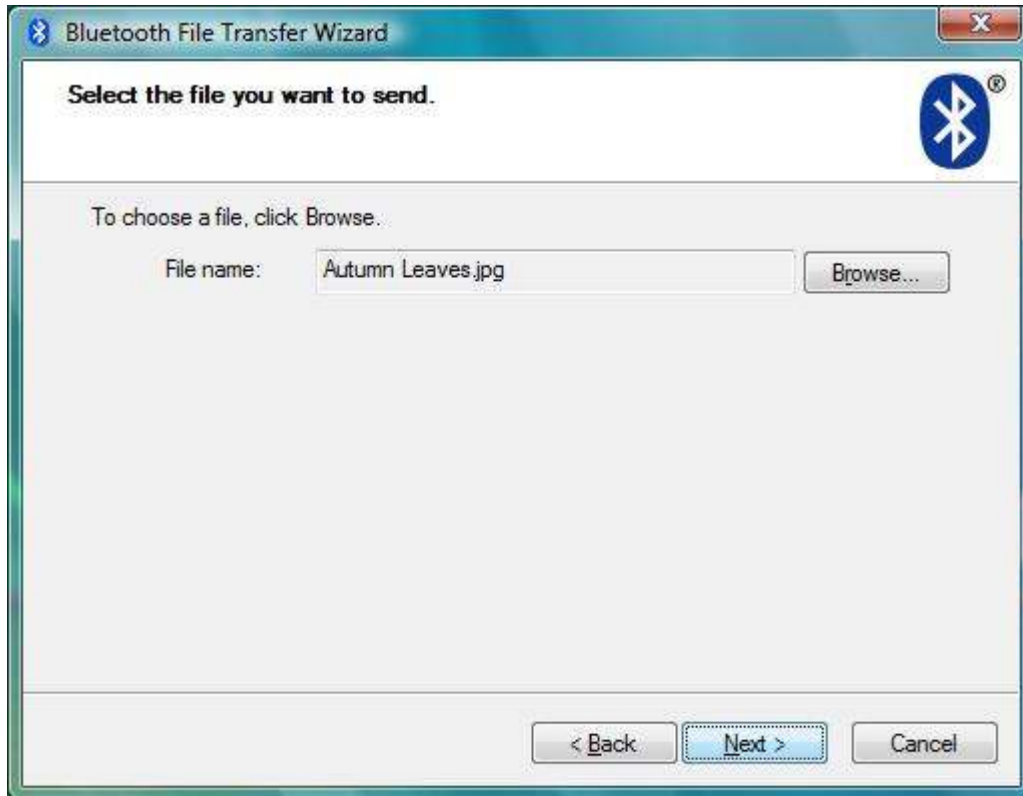
⑤ click “next”



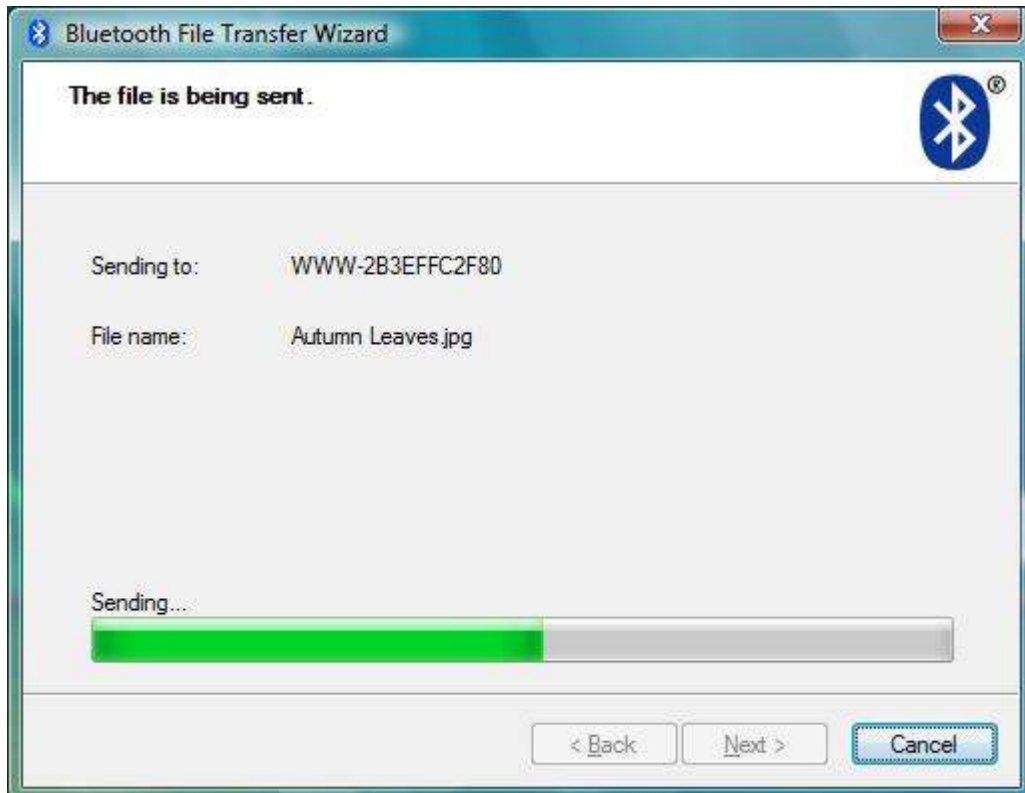
⑥ click "browse" and select any file ,then click "open"



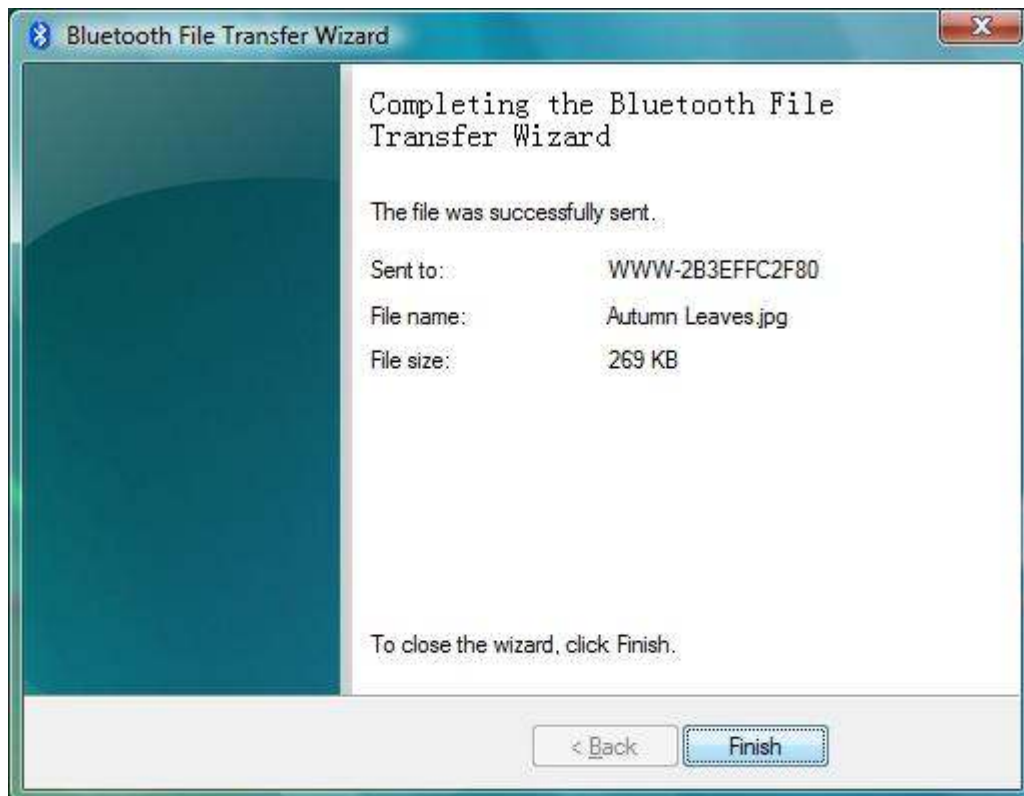
⑦ click "next"



⑧ being sent file to PC2



⑨ successfully sent file to PC2



FEDERAL COMMUNICATIONS COMMISSION INTERFERENCE STATEMENT

This equipment has been tested and found to comply with the limits for a Class B digital device, pursuant to part 15 of the FCC Rules. These limits are designed to provide reasonable protection against harmful interference in a residential installation. This equipment generates, uses and can radiate radio frequency energy and, if not installed and used in accordance with the instructions, may cause harmful interference to radio communications. However, there is no guarantee that interference will not occur in a particular installation. If this equipment does cause harmful interference to radio or television reception, which can be determined by turning the equipment off and on, the user is encouraged to try to correct the interference by one or more of the following measures:

- Reorient or relocate the receiving antenna.
- Increase the separation between the equipment and receiver.
- Connect the equipment into an outlet on a circuit different from that to which the receiver is connected.
- Consult the dealer or an experienced radio/ TV technician for help.

CAUTION:

Any changes or modifications not expressly approved by the grantee of this device could void the user's authority to operate the equipment.

RF exposure warning ·

The equipment complies with FCC RF exposure limits set forth for an uncontrolled environment.

The equipment must not be co-located or operating in conjunction with any other antenna or transmitter.

Section 15.19 Labelling requirements.

This device complies with Part 15 of the FCC Rules. Operation is subject to the following two conditions: (1) this device may not cause harmful interference, and (2) this device must accept any interference received, including interference that may cause undesired operation.