



DIGITAL WIRELESS KIT USER MANUAL



Guides You into a Harmonious World



Note

This product is forbidden for illegal use!

Contents

Introduction	02
Installation	02
Software introduction	03
Main fenster.....	03
4-channel quad view.....	04
Setting.....	05
Network server.....	06
MMS Server.....	06
Basic setting.....	07
Image setting.....	08
Recording Setting.....	09
Schedule setting.....	09
Motion Detection.....	12
Special area monitor setting.....	13
Alert Setting.....	13
Playback.....	14
FAQ	15

I. Introduction:



System configuration:

	Basic	Recommend
CPU	Pentium4 2.0 GHz	Pentium4 3.0 GHz or more
RAM	512 MB	1 GB or more
Resolution	800 x 600	1024 x 768
System	Windows 2000	Windows XP or Vista
Windows Media Player	Windows Media Player 9	Windows Media Player 9 or higher

II. Installation Software:

1. Install "setup_WUSB Camera"



2. Install "Setup_20091214"



III. Software introduction

1. Run program file



WirelessGuard Introduction



Main Fenster







2. Channel status:

- : monitoring
- : Standby
- : Recording
- : Audio is available

3. Main menu:


- Snapshot: take photo
- Detect: Recording by manual or motion detection recording
- Web Server: for Lan view or internet view
- Setup: Blue Jay Viewer setting
- Playback: view the recording video

4. Indicate introduction:

-  : Signal status
-  : Reset the channel of camera
-  : Open the folder of the photo and recording file
-  : Adjust the size of the screen
-  : Show only one channel
-  : Show 4-channel at the same time

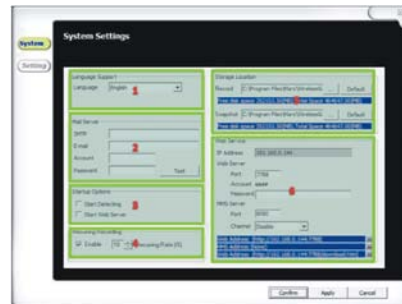
5. Channel Information

Show 4-channel picture at the same time

Connect the receiver the pc, reset the camera channel, press  to see 4 pictures.




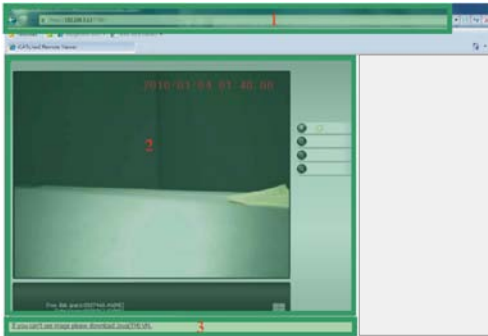
Setting:



1. Language optional
2. Email server: this email is used for motion detection remind.
3. Running when start(optional):
 - Detecting
 - Web Server
4. Recurring Recording
5. Record, setting the recording AVI file local place
6. Web Service Setting:
 - IP Address
 - Web Server Port
 - Web Server Account: fault "user"
 - Web Server Password
 - MMS Server Port: Microsoft Media Server
 - MMS Server Channel: Microsoft Media Server


Network Server:

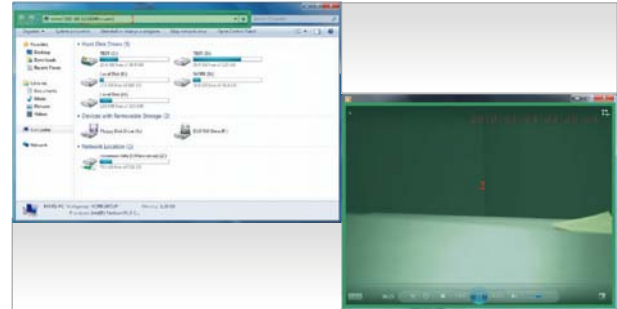
Press  Web Server button, then open internet explore, type ip address: http:// ip address:7788, e.g.: if your IP address is 192.168.1.2, then you should type: http://192.168.1.2:7788



Download the software at the bottom, and install

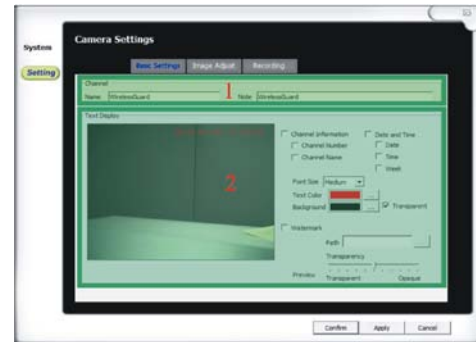
MMS Server:

Press  Web Server button and start Microsoft Media Server, open my computer and type: mms: //MMS Server ip address:7788



Basic Setting:

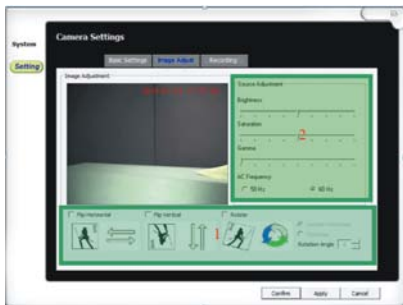
Setting the information on the screen



1. Setting channel name and information
2. Text Display:

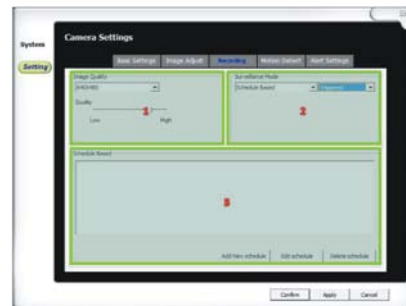
- Channel Information
- Date Time
- Font Size
- Fore color
- Background
- Watermark

Image setting:



- Flip Horizontal
- Flip Vertical
- Rotate
- Brightness
- Saturation
- Gamma

Recording setting:



1. Image Quality:
 - Resolution
 - Quality
2. Surveillance Mode:
 - Option 1 :
 - Schedule Based
 - Record (During Detection)
 - View Only (No Recording)
 - Option 2:
 - Full-time
 - Triggered: (Motion Detect) and (Alert Setting)

Schedule setting:

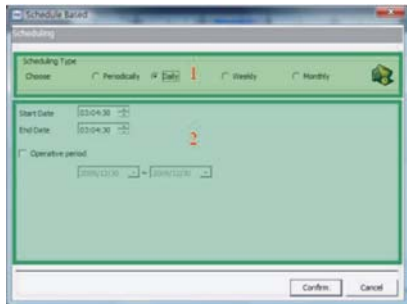
1. Schedule Based:
 - Add new Schedule
 - Edit Schedule
 - Delete Schedule

2. Periodically:



- 1) Scheduling Type
- 2) Set Start Date and End Date:

3. Daily:

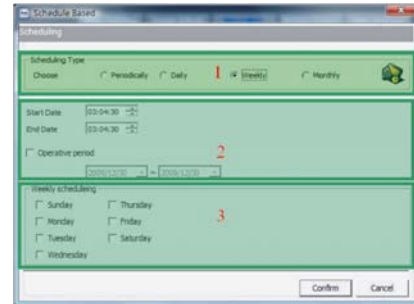


1) Scheduling Type:

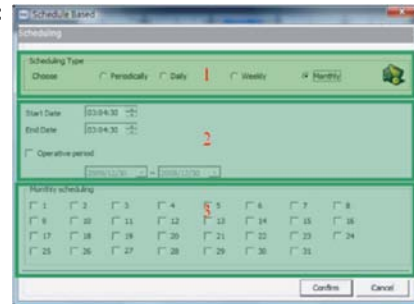
- Daily: time zone

2) Set Start Date and End Date or use Operative period to choose date

4. Weekly:

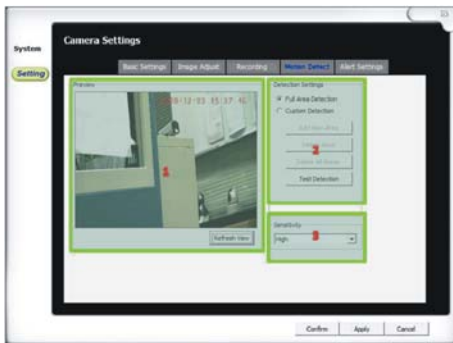


5. Monthly:



Motion detection:

Select "Triggered"



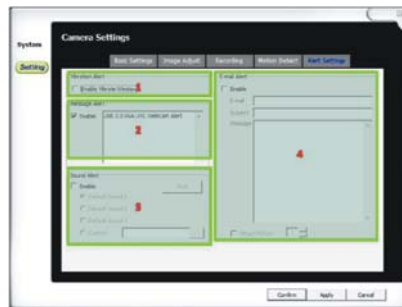
1. Preview: Click Refresh View
2. Area detecting: select special area that you want to monitor specially
 - Full Area Detection
 - Custom Detection
 - Add New Area
 - Delete Area
 - Delete All Areas
 - Test Detection
3. Sensitivity

Special area monitor setting:

Use mouse to add New Area

**Alert setting:**

Set recording model as "Triggered")





1. Vibration Alert: when there is a motion, the screen will vibrate
2. Message Alert: when there is a motion, the screen will show you the message
3. Sound Alert: when there is a motion, there will be sound alarm
4. E-mail Alert: when there is a motion, it will send message to your email address(setting email address in email server)

Playback:



1. Screen
2. Start intelligent search.
 - Setup Search
 - Add new block
 - Delete block
 - Clear all blocks

- Sensitivity
 - Search
3. Time and channel search: press "Query", show you right file in record list
 4. Record list
 5. Video tracker
 6. Playback controls
 7. Snapshot: press  to take photo, press  to open the file.

IV. FAQ:

Q: Why can not we use some functions or buttons?

A: Some functions only work when it is one-channel view, and you should be out "detecting" .

Q: Why can not we go to set and playback?

A: Please leave "detecting".

Q: Why can not we use remote control (PTZ)?

A: It only works when it is one-channel view, and your cameras do not support this function.

Q: Does it support DDNS?

A: Yes, it supports DDNS, and you can also visit by the ip address or DNS address.

Q: Why does it not recording after press "detecting"?

A: Please check the recording setting, if it is recording all the time, it should work, but if this recording by motion detection, it will only work when there is a motion.

2.4G Digital Wireless Kit

Q: Why can not see remote view?

A: Please check the network setting and IP address.

Q: What is the meaning of "Can not connect to following channel(s)"?

A: Please check the connect status.

Q: What is the meaning of "Can not import to the following channel"?

A: Please check the IP address, maybe your IP address is the same as some other computer.

Q: What is the meaning of "No buffer space error"?

A: The space of hard drive is not enough.

Q: What is the meaning of "Virtual RAM insufficient"?

A: Please up your RAM to be 1G.

Warranty card

This card is the important evidence to receive our service, please keep it well.

- ① When used normally, the following services can be offered:
 - A. Replacement for functional disorder within 3 months.
 - B. Repair free of charge for functional disorder within 1 year.
 - C. Service for all the life(only charge material cost and freight if the warranty date expires.)
- ② The following conditions are excluded for warranty service (repairable if needed, but will charge material cost and freight.)
 - A. Malfunctions or damages by mistaken installation or using the products exceeding the limited operating conditions.
 - B. Malfunctions or damages by self disassembled or repair and any other misuse.
 - C. Spare parts missed, artificial damages
 - D. Unmatched products.
- ③ Repair cycle Excluding the shipping dates, the Quality Department will submit the examine report in one day on receipt of the products, the products on the quantity under 50sets will be repaired in 3 days after customers signed back the test report.

Product name: _____

User's name: _____

User's address: _____

Tel: _____ **Zip code:** _____

Purchase date: _____

Invoice No.: _____

Distributor: _____

Contact person: _____ **Tel:** _____

Dealer:(Valid by sealed)

FCC warning statement

This equipment has been tested and found to comply with the limits for a Class B digital device, pursuant to part 15 of the FCC Rules. These limits are designed to provide reasonable protection against harmful interference in a residential installation. This equipment generates, uses and can radiate radio frequency energy and, if not installed and used in accordance with the instructions, may cause harmful interference to radio communications. However, there is no guarantee that interference will not occur in a particular installation. If this equipment does cause harmful interference to radio or television reception, which can be determined by turning the equipment off and on, the user is encouraged to try to correct the interference by one or more of the following measures:

- Reorient or relocate the receiving antenna.
- Increase the separation between the equipment and receiver.
- Connect the equipment into an outlet on a circuit different from that to which the receiver is connected.
- Consult the dealer or an experienced radio/TV technician for help

This equipment complies with FCC radiation exposure limits set forth for an uncontrolled environment. This equipment should be installed and operated with minimum 20 cm between the radiator and your body. This transmitter must not be collocated or operating in conjunction with any other antenna or transmitter unless authorized to do so by the FCC.

Changes or modifications not expressly approved by the party responsible for compliance could void the user's authority to operate the equipment.