

# RC431 USB Wireless Receiver User Manual

Thank you for using our wireless USB receiver, please read the following content carefully before using, it will help you make better use of this product.

## Introduction

RC431 wireless USB receiver works in ISM Band: 2400 ~ 2483MHz to receive wireless camera audio and video signals and displays the received image signal via PC. With our "LYD Monitoring System" software, you can capture the image and video you are watching, and play back the data recorded. It can also be used as a regular receiver to convert the Video & Audio signals to normal monitor/TV. A simple switch from TV to AV on your television enables you to enjoy its capability for entertainment, monitoring and security purposes.

## Basic Specification

- Support Windows XP & VISTA
- Support USB2.0
- Video and Audio
- Support remote monitoring and controlling by third-party software via PC, support Internet video telephone
- ISM Frequency Band:2400~2483MHz
- Receiving Frequency:CH1=2414MHz,CH2=2432MHz, CH3=2450MHz,CH4=2468MHz
- Receiving Sensitivity: -85 dbm
- IF frequency: 480MHz
- Video Output amplitude:1Vp-p
- Audio Output amplitude: 2.5Vp-p(Max)
- High-speed image compression processing, display speed:30fp/s
- Resolution: 640\*480; 320\*240
- Power Supply: PC Mode: USB power, no power adapter; Monitor / TV Model: DC5V/500mA
- Dimension: 120x99x30mm
- Operating temperature: -10~50°C

## Diagram:



## Installation

### Monitor / TV mode:

1. Connect the wireless cameras with the configured power adaptor and power on.
2. If two or more wireless cameras are installed at the same time, please keep a distance of 2 meters or more between the two wireless cameras, as well as between cameras and receiver too. Otherwise there might be signal interference between them so that will influence the image quality.
3. Turn the antenna of RC431 and make the antenna vertical upward in order to ensure the best reception.
4. Connect one end of the AV cable to the RC431's AUDIO and VIDEO output jack ,and the other side to the monitor / TV AUDIO and VIDEO input jack.
5. Insert the AC input plug of the power adapter (DC5V/500mA) into electricity socket, insert DC output plug into RC431 USB socket. Turn on the main power, and then you will see the red mark on the receiver.
6. Turn on the monitor / TV power supply, change the monitor / TV to AV mode.
7. RC431 button operation:
  - 1). Power on: In the off state, one press on the button enables the receiver power on and the channel indicator LED turns on.
  - 2). Switching channels: In the operation state, one press on the button enables to receiver jump into next channel.
  - 3). Power off: In the operation state, press the button and keep more than 1 second. Release the button when the LED indicator turns off.
8. Adjust the camera lens if the image is not clear.
9. Adjust TV brightness, contrast, and color of the monitor to obtain the best quality images.

## Speed DVR user manual

Welcome to use Speed Soft Speed DVR™. This video surveillance software is designed to meet your demands for security and surveillance purposes. Speed DVR provides security and protection for workplace, house, baby room, car, garage and so on. Speed DVR enables your computer to become a powerful monitoring system. Speed DVR supports remote monitoring in real-time and Multi-cameras displaying. Speed DVR enables to capture camera movements and save multi-media file formats in computer. Search and manage the recorded data easily.

### Speed DVR function

Speed DVR software Key features.

- Motion detection
- ASF code
- Remote Capture video content
- Intelligent archiving video surveillance
- Multi-Camera View
- cameras
- Quick search
- Recorded data and files management

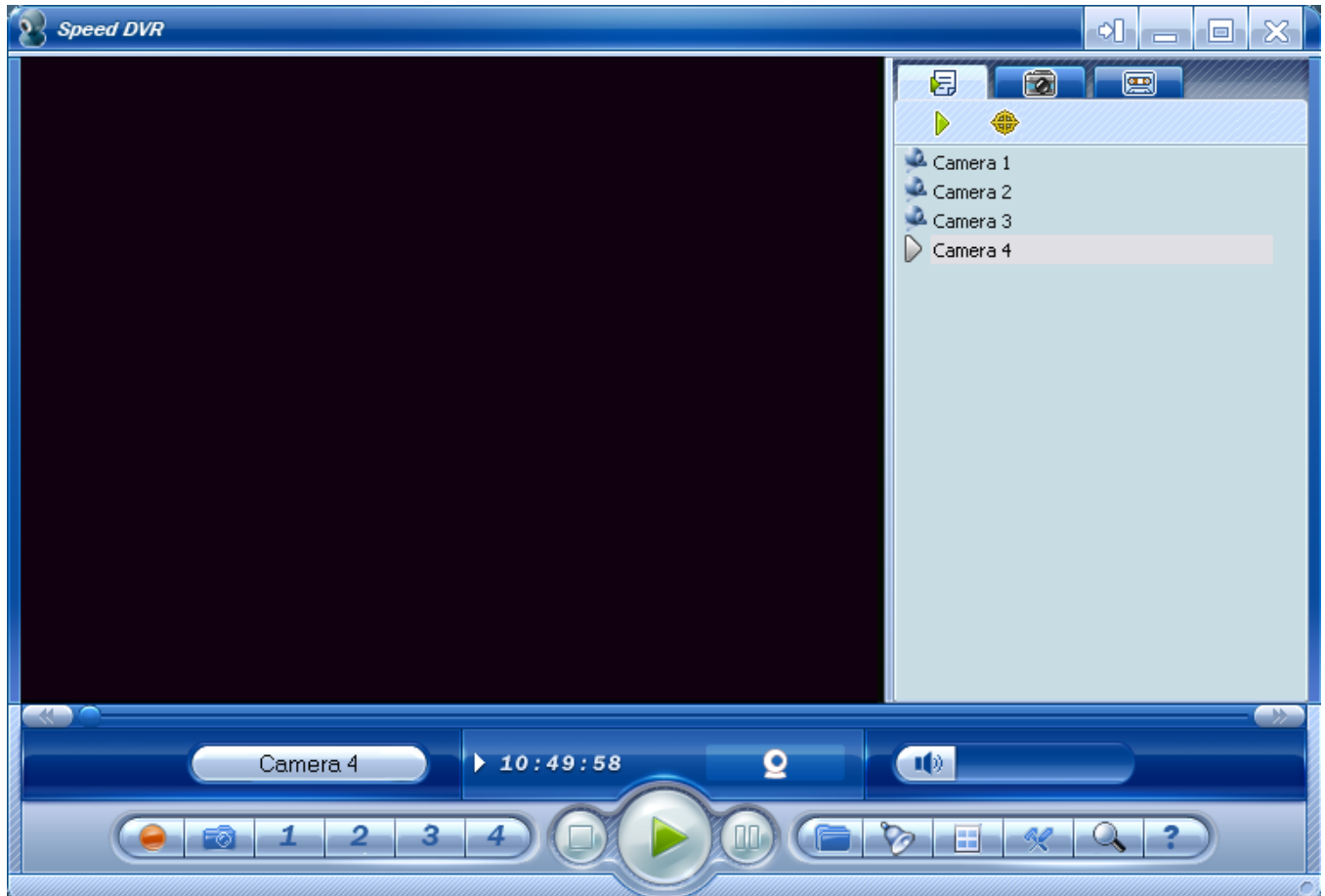
- Strong reliability

## Interface Basics

This section describes the various interfaces of the Speed DVR briefly.




### Speed DVR Main window











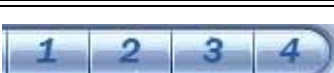


Speed DVR user interface contains Control panel part, Video display area part and Right-click menu part, Speed DVR enables you to manage recorded data and any content easily.



Use Speed DVR Control Panel, you can easily access to all common functions program.

The following table describes all the features of Speed DVR control panel:

ICON	Function	Description
	Exit	Exit Speed DVR.
	Record	Using the current camera to start recording
	Play/Pause	Play or pause when recording.

	STOP	STOP playing
	Snapshot	Capture the video picture
	Zoom and Panorama	Enlarge or minimize the image viewing area.
	Alarm	Enable or disable the alarm
	Settings	Display Settings dialog
	Help	Be on the screen with instant access to information about how to use Speed DVR detailed information and instructions
	Display area	Shows the status of the process of recording, such as the camera input source and recording time
	Volume Control	Drag the slider to increase or decrease playback volume. Click the speaker icon to mute
	Slipper block	Displays the current playback status. Drag the slider, the video moves to a specific location
	Backward and forward	Forward or backward Video
	Camera	Select a camera button, and watch or record the image
	Multi-Camera Mode	Support converting to single-or multi-camera display window
	Open the file	Open the recorded files, and play.

## Right -Click Menu

Speed DVR **Right -Click Menu** include following items:

	Play: Start playing
	Pause: Pause playback of recorded files
	Stop: Stop playing
	Recording: start or stop recording
	Camera: Select a camera to play
	Play files: Play recorded files
	Capture picture: Capture video picture
	Full screen: Playing video in full screen
	Multi-frame: display 4 pictures in one screen
	Alarm: Start or cancel alarm function
	Front-end display: Window displays at the top of all windows
	Scheduled Tasks: Scheduled Tasks dialog is open
	Settings: Open the Settings dialog
	Registration: Software Registration
	Check for updates: networking check for new versions
	Help: Show Help Document
	Regarding: the software version information and instruction
	Exit: Exit Speed DVR

## Introduction

Before using Speed DVR, please read the following sections to help you use the program better.

## Installation requirements

### System Requirements

	Basic System Requirements	The recommended system requirements
<b>Processor</b>	Intel® Pentium® III 800 MHz	Intel® Pentium® 4 1.8 GHz
<b>Memory</b>	64 MB RAM	256 MB RAM
<b>Video Card</b>	800 x 600, 16 Bit color	800 x 600, 24/32 Bit color
<b>USB port</b>	USB 2.0	
<b>Operation system</b>	Windows 2000 (including SP4 or higher) , Windows XP (including SP2) ,Windows	

	Vista
Audio card	Windows Compatible with sound card
<b>Available hard disk space</b>	50 MB
<b>DirectX support</b>	DirectX 9

---

### Unloading Speed DVR

1. In the Windows taskbar, click **Start**, and then click **Control Panel**. Display "Control Panel" window
2. Double-click **Add or Remove Programs icon**. Display the "Add or Remove Programs" dialog box
3. Select Speed DVR items, Click **Add or Remove**, Display the "Add or Remove Programs" dialog box.
4. Click **OK**
5. According to all the instructions displayed on the screen, unloading the Speed DVR from your computer successfully.

### Speed DVR HELP part

---

Please refer to the software Speed DVR help. Help in the menu bar, click "Help, or click the Help button, or start the online help.

---

### Connect to device

Before start Speed DVR, you must connect the camera to the computer. Please refer to "Connect USB camera" section for more information about how to connect USB camera and computer.

---

### Connect USB camera

1. Install the software of the camera.
2. Re-start your computer.
3. Connect camera to the computer's USB port. Windows Hardware Wizard will install the camera driver on your computer. If the Hardware Wizard failed to find the driver, please refer to the document of the camera for more information about installing the driver details.
4. Run Speed DVR.
5. In the menu bar, select <View> and then select a camera number, Speed DVR will display the video on the window of CAMERA.

**Notes:** Combine Speed DVR with wireless CMOS camera is available. For more information about how to connect a wireless CMOS camera, please refer to the document of **came with wireless devices**

## How to use Speed DVR

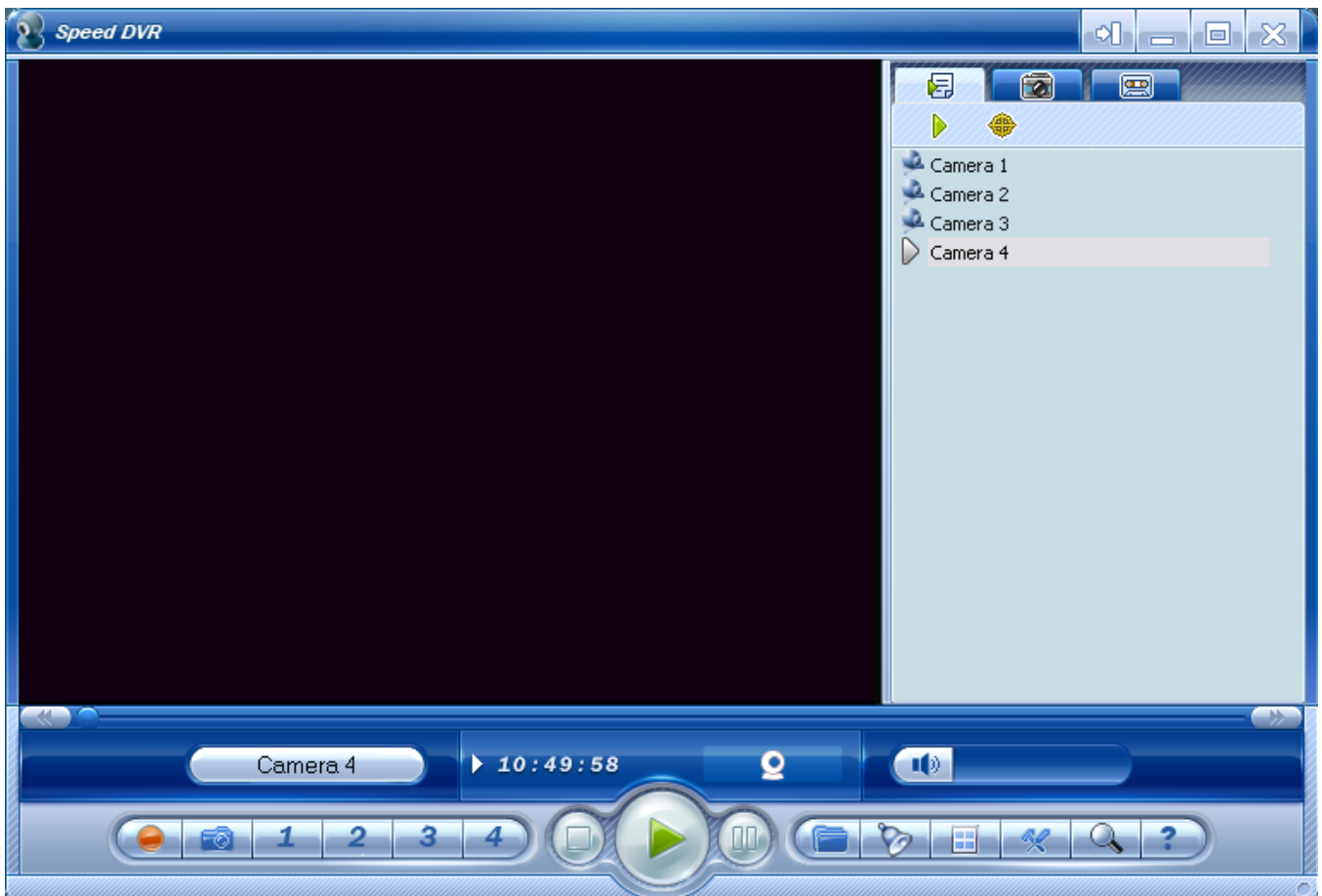
Use Speed DVR custom to recording or alarming, viewing the recorded data, capture images, viewing images in a single model or a multi mode. The following sections describe the general function of Speed DVR

### Images Viewing


Speed DVR enables to view images in a single model or a multi mode

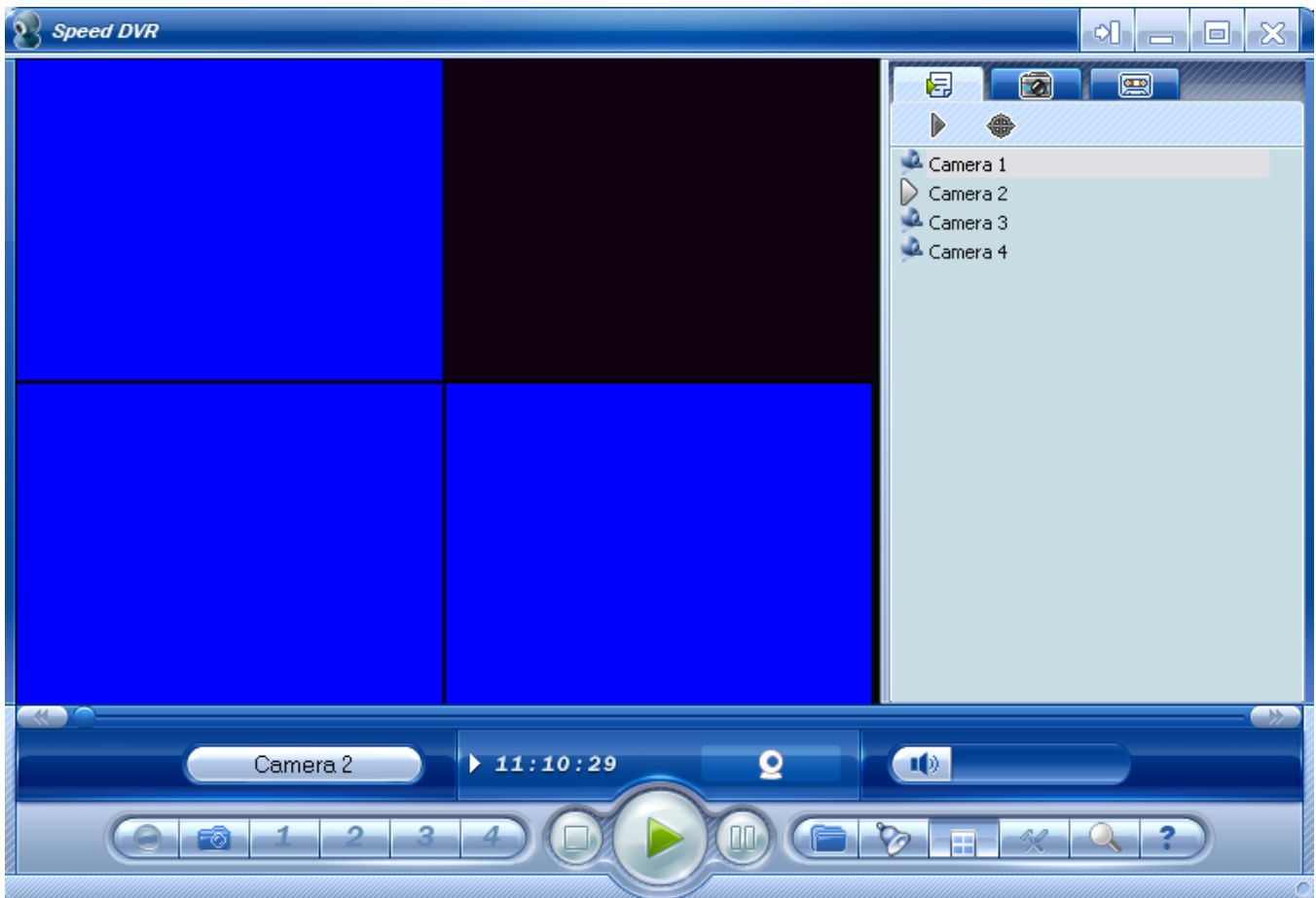
How to view a single camera image:

On the menu bar, select "View" and then select a camera



How to view multiple camera images



On the menu bar, select "View" and then select the "multi-camera" or click the "multi-camera" mode  button.



### Video recording

Use the Speed DVR to record the full motion video from the camera and audio, and use the MPEG-4 encoding for saving the real time video content directly to a designated area on the hard disk.

To record a video clip:

1. Click <recording>  button. Speed DVR start recording the video from the current working camera.
2. Click <stop>  button to stop reording.

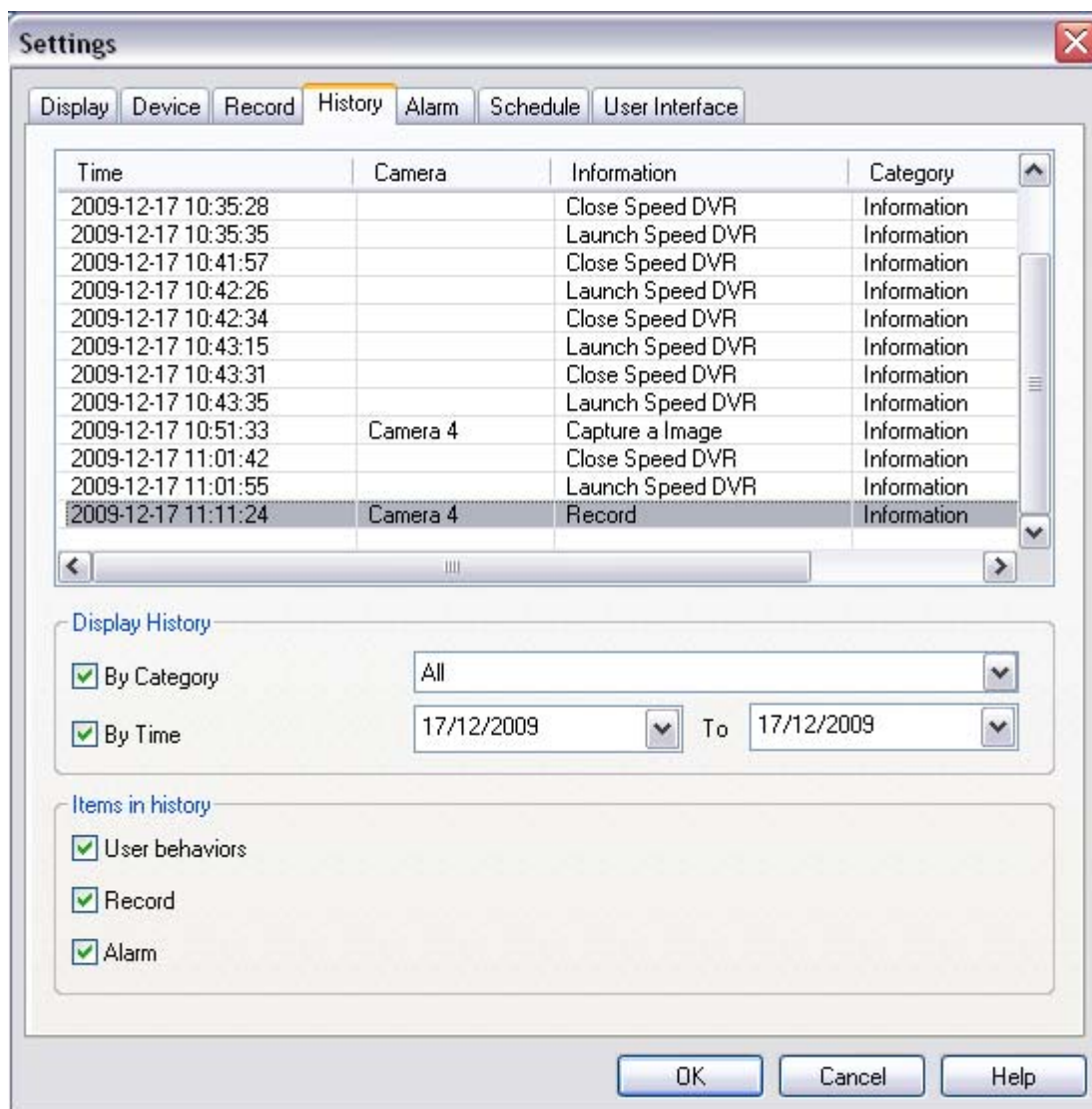
### View Event History

Speed DVR supports viewing, monitoring and analyzing events occurred when recording. Support view events in a particular category, such as all videos, notice, warning, information or errors. Support review all event history by date, by custom task testing activities (E.g., by time, alarm, motion recording video, or view the event). Supports enter search criteria, such as start date, end date, and time range.

To view the event history:

To select "Settings" and then select "History." on the menu bar, you can see A "History" dialog box.





## Recorded video when Alarm or motion is detected


Speed DVR activates the camera to start recording when alarm alert or motion detected.

To record video when motion is detected or in the event of alarm

1. Select "alert" and then choose "Alert Settings." in the menu bar, you can see An "Alert Settings" window.
2. Select camera.
3. See Configure Alert Settings.

## Capture still Video image

Speed DVR Live also support you to capture a single image recording process

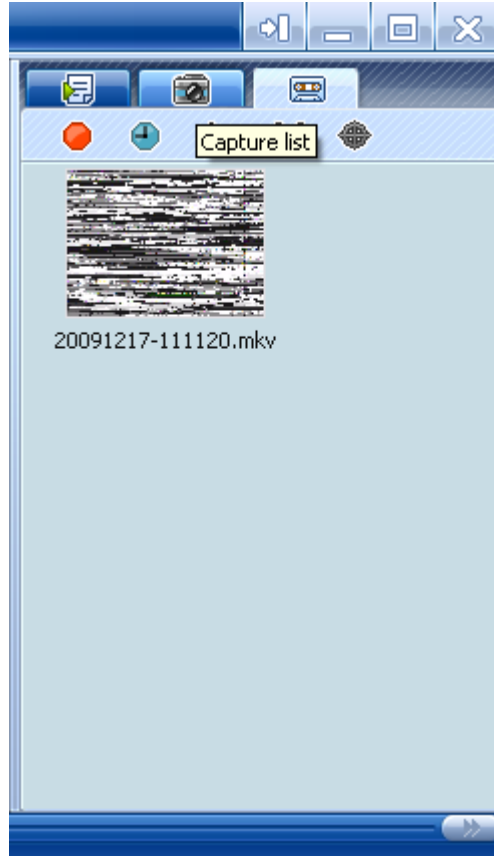
Click  button of the control panel. The capture image will be saved in an appointed file. For more user guide information, please refer to [Recording Properties page](#). The captured file will be named automatically.


## View Archive Video

---

To view archive video in Speed DVR :

1. Click <play>  Button enter into a "Recording" page



2. Select a programmed name from Video list, then Click  Button.

---


## How to configure Speed DVR settings

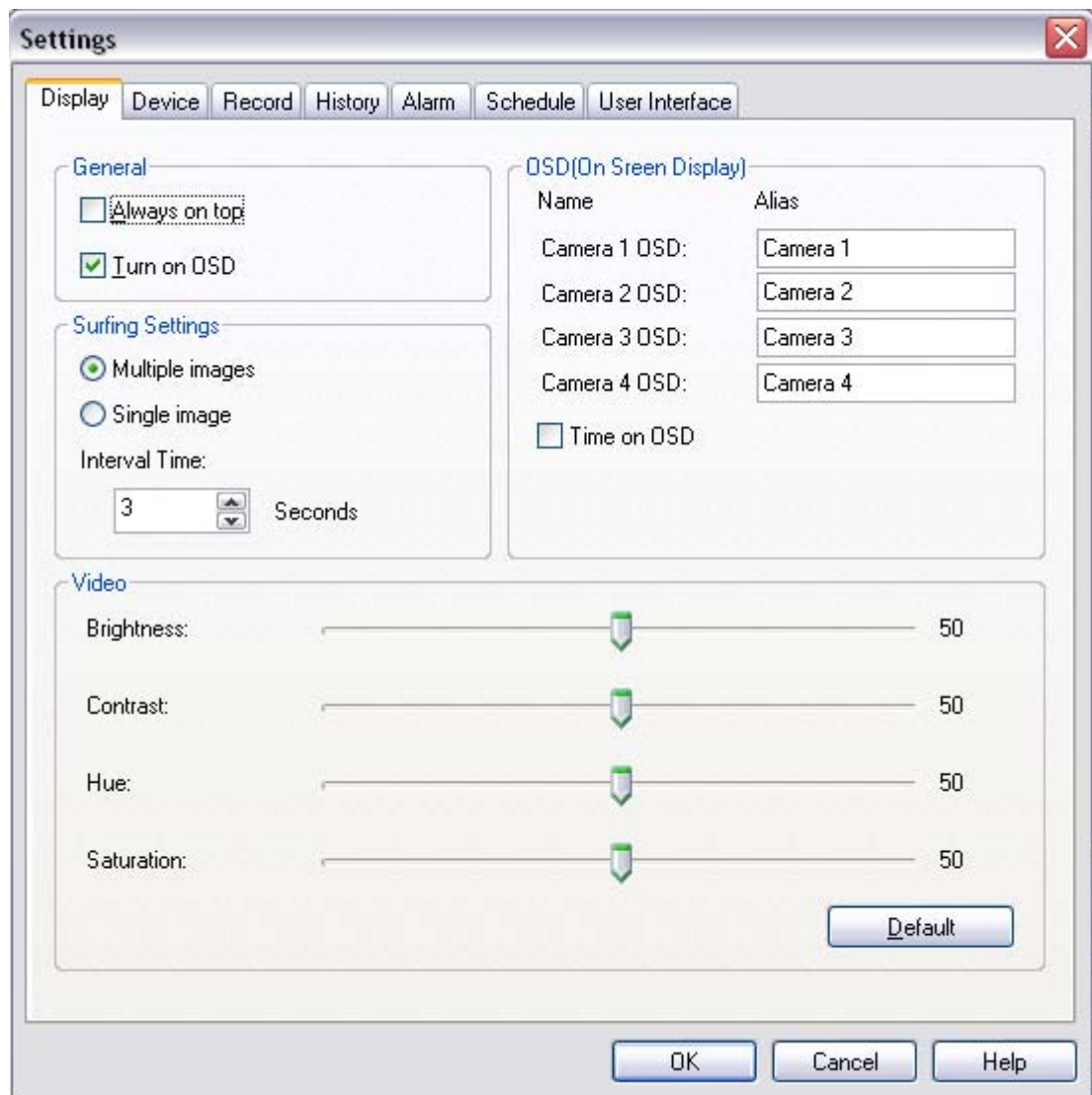
Please read the following content carefully to know how to setting Speed DVR.

---

### Visit Speed DVR setting page

Please carry out of the following step:


- Click  button.
- Select and click "setting" button in the right-click menu, a "setting" Dialog box will be open.



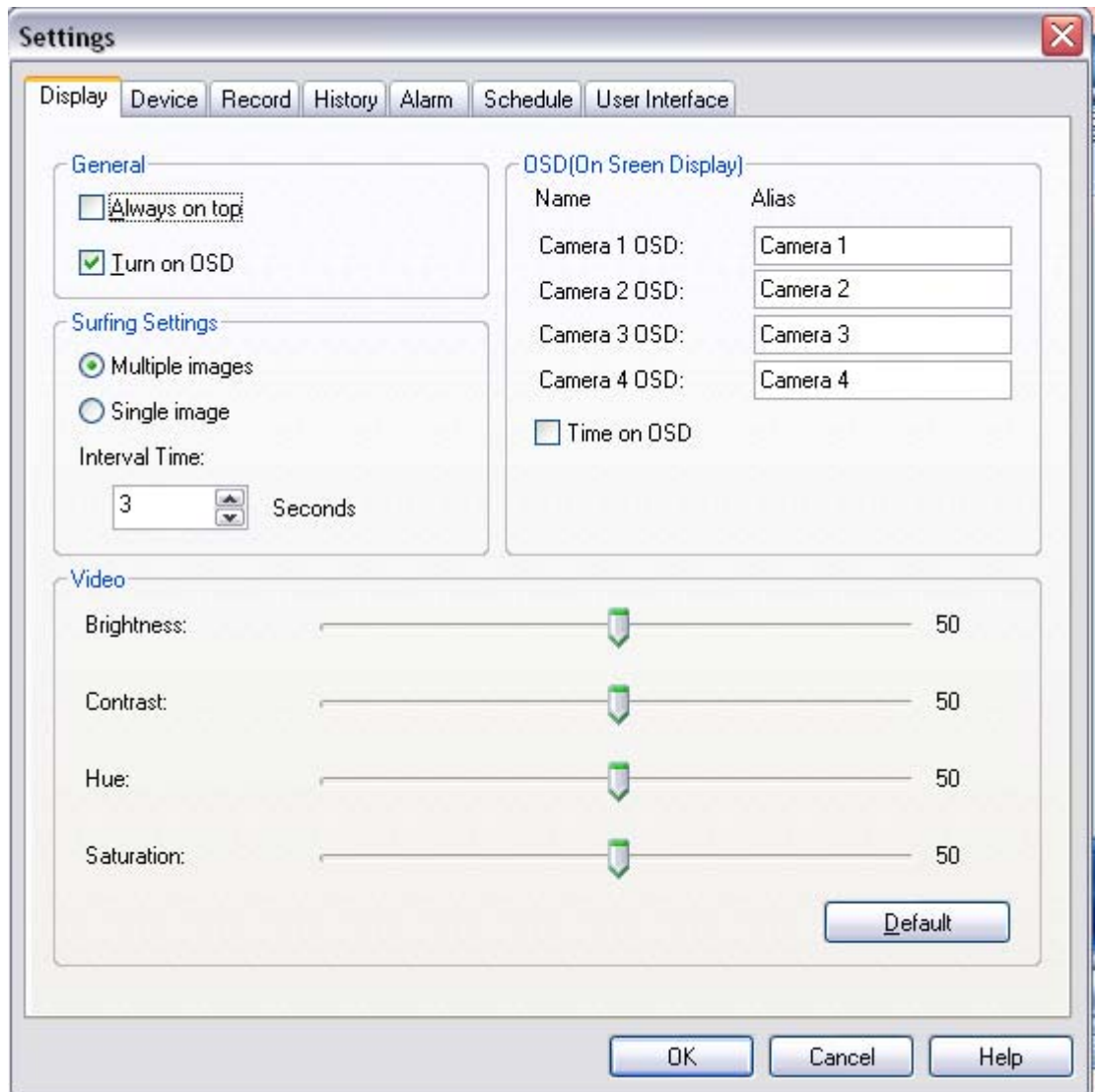
### The display properties Configuration

"Display" property page enable you to configure the video mode Of Speed DVR on the monitor or the screen

1. Please try one the following:

- o Click  button.
- o Select "setting" in the menu and then select "Options"

You can see A Dialog box as follows:



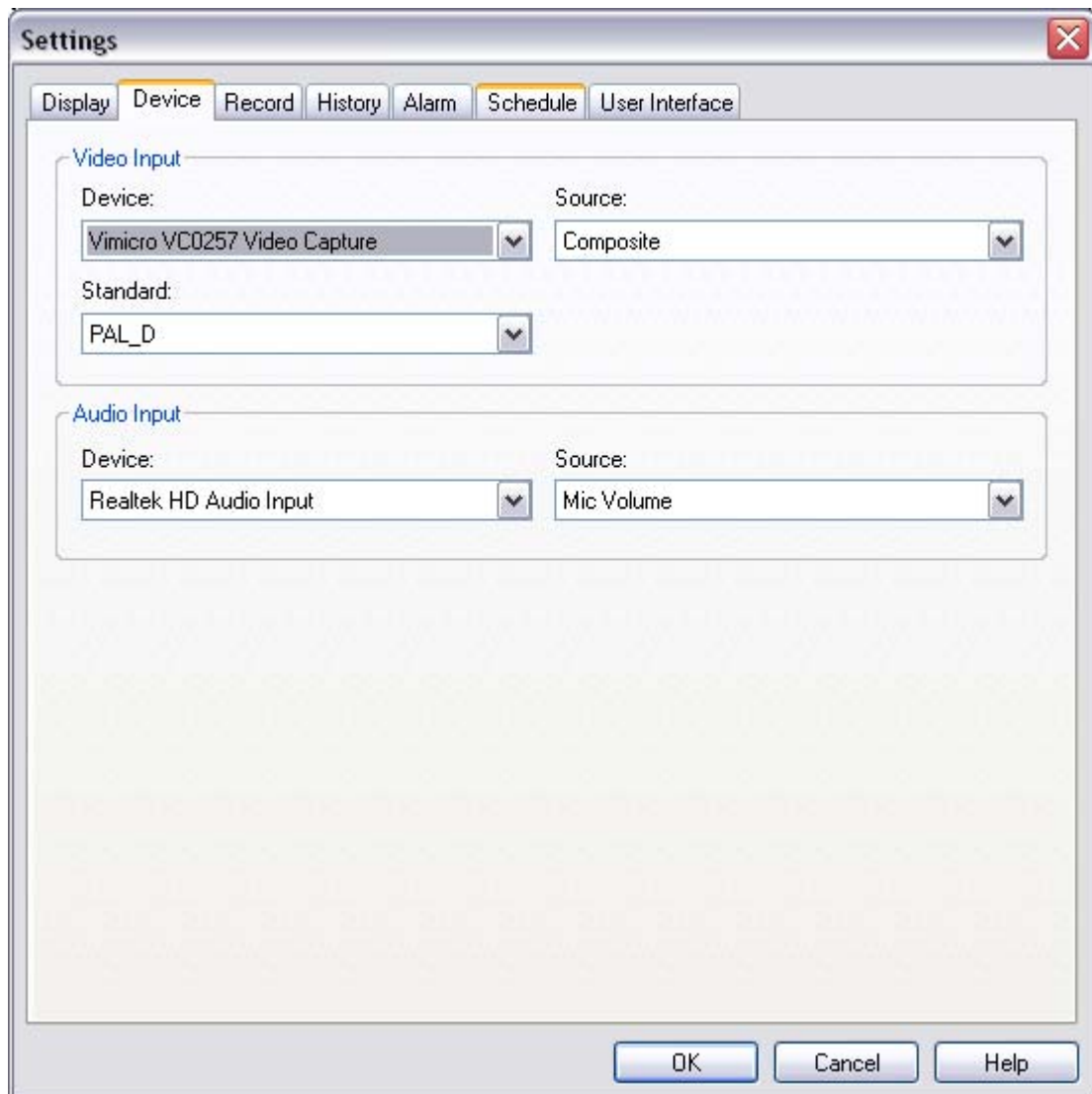
2. In the "alias" field, enter the name of the camera connected to the computer.
3. In the OSD box, select "time" in order to displays the current time when enable the OSD function of the Speed DVR
4. Select "always on top" check box in order to make sure the speed DVR window is always displayed when you run the other programs
5. Select "Open OSD" check box for displaying camera information, such as camera number, date and time in the "camera" window
6. Drag the slider to adjust the brightness, hue, contrast, grayscale of video image, when you click the "Default" button, brightness, hue, contrast, grayscale settings will reset to its original position.
7. Click "OK" button.

## Device properties Configuration

In the "Device" property page for the cameras and audio equipment, select the appropriate parameters

1. Please do one of the following:
  - o In the "Settings" dialog box, select "Device" tab.
  - o In the context menu, select "Settings" "" Device "tab

And find an "equipment" Properties dialog box as follows:



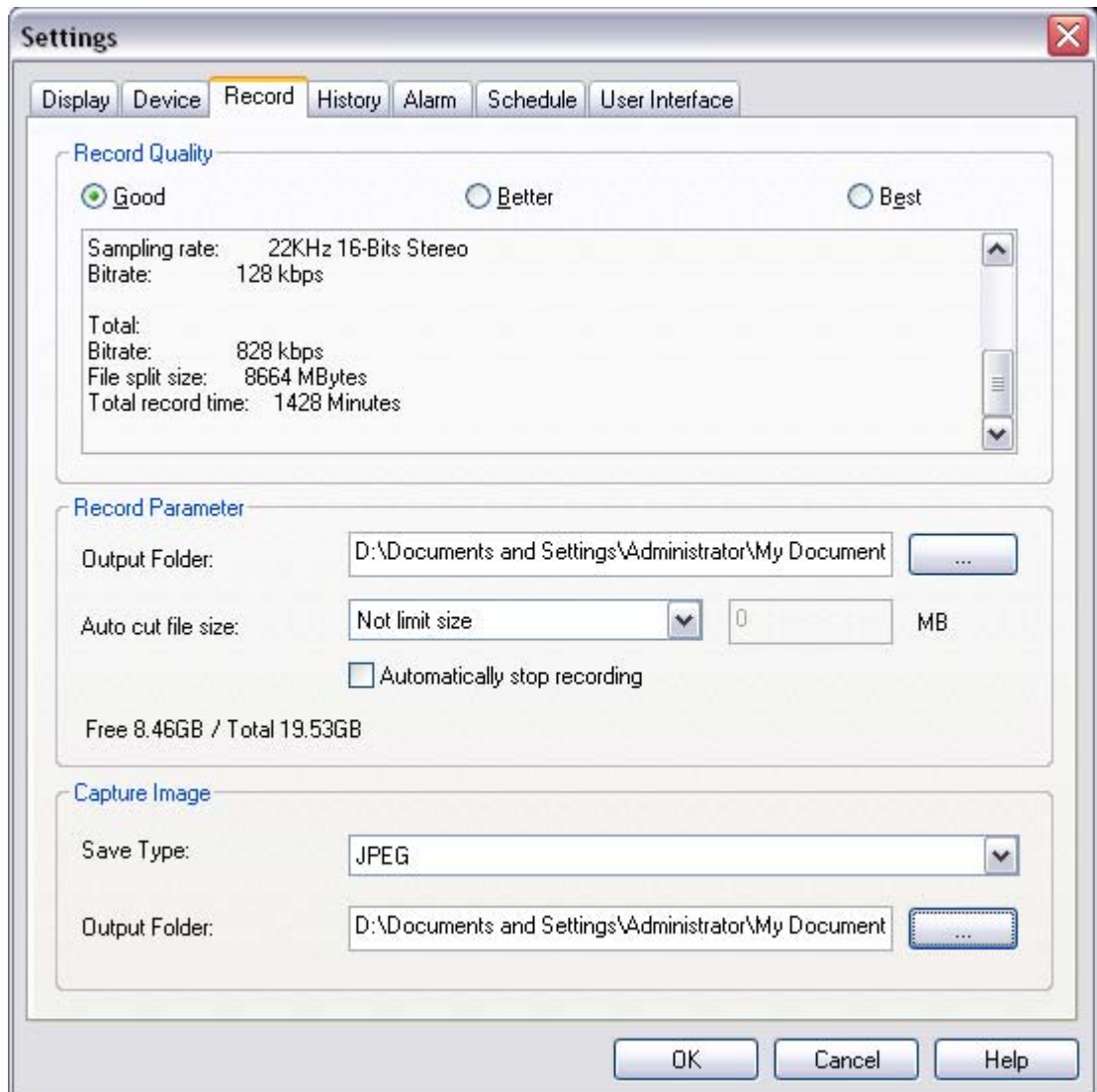
2. In the "Video input device" drop-down menu, select the camera you want to use as surveillance cameras.
3. In the "video input format" drop-down menu, select the video standard format
4. In the "video input source" drop-down menu, select "S-Video" or "composite" option. VCR, external DVD players and other playback devices need using "S-Video" or "complex."
5. In the "Audio Input Device" drop-down menu, select Audio Devices
6. In the "Audio Input Source" drop-down menu, select the audio input source equipment
7. Click "OK"

## Configuration recording properties

Speed DVR also support MPEG-4 recording format. Different specific Configuration and recording quality optional

1. Please do one of the following:
  - o In the "Settings" dialog box, select "Recording" option
  - o In the context menu, select "Settings" "" Recording "tab.

You can find a "record" Properties dialog box.



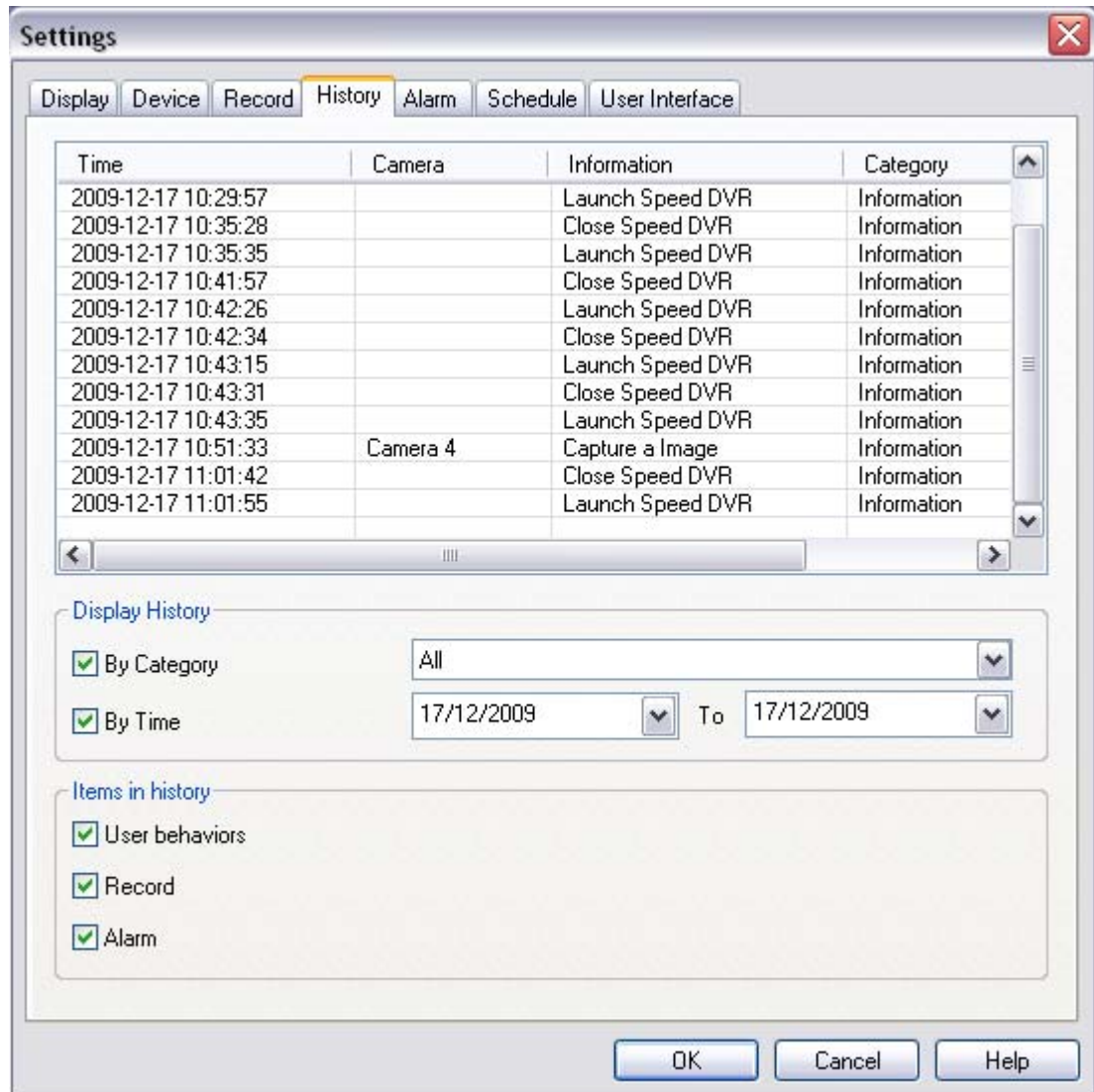
2. By selecting a preset level ( "good", "better" or "best") to select the output quality of recorded programs. Quality levels associated with each recording settings appears on the right
3. Choose a good output folder for recording file
4. To Set up automatic split the file size by selecting the tab when file is more than the fixed size ,The camera stop recording automatically", then when recording file exceeds the size of the file split automatically, it will stop recording.
5. Select a crawl to keep the format of video images.
6. Click <OK>.

## How to configure the history attributes

In the "History" property page to view archived event log report

1. Please do one of the following terms:
  - o In the "Settings" dialog box, select "History" tab.
  - o In the context menu, select "Settings" "History" tab.

Find a "history" Properties dialog box as follows



**Notes:** "History" Properties dialog box on the table will show the event log report.

2. In the "Show History by category" drop-down menu, select the types of events you want to view. If you choose one of all the categories, rather than a "full", only shows the items belonging to that category
3. In the "Showing History by time" drop-down menu, specify the start date and end dates of the you want to view
4. Select items which hope to be displayed in the history events
5. Click "OK"

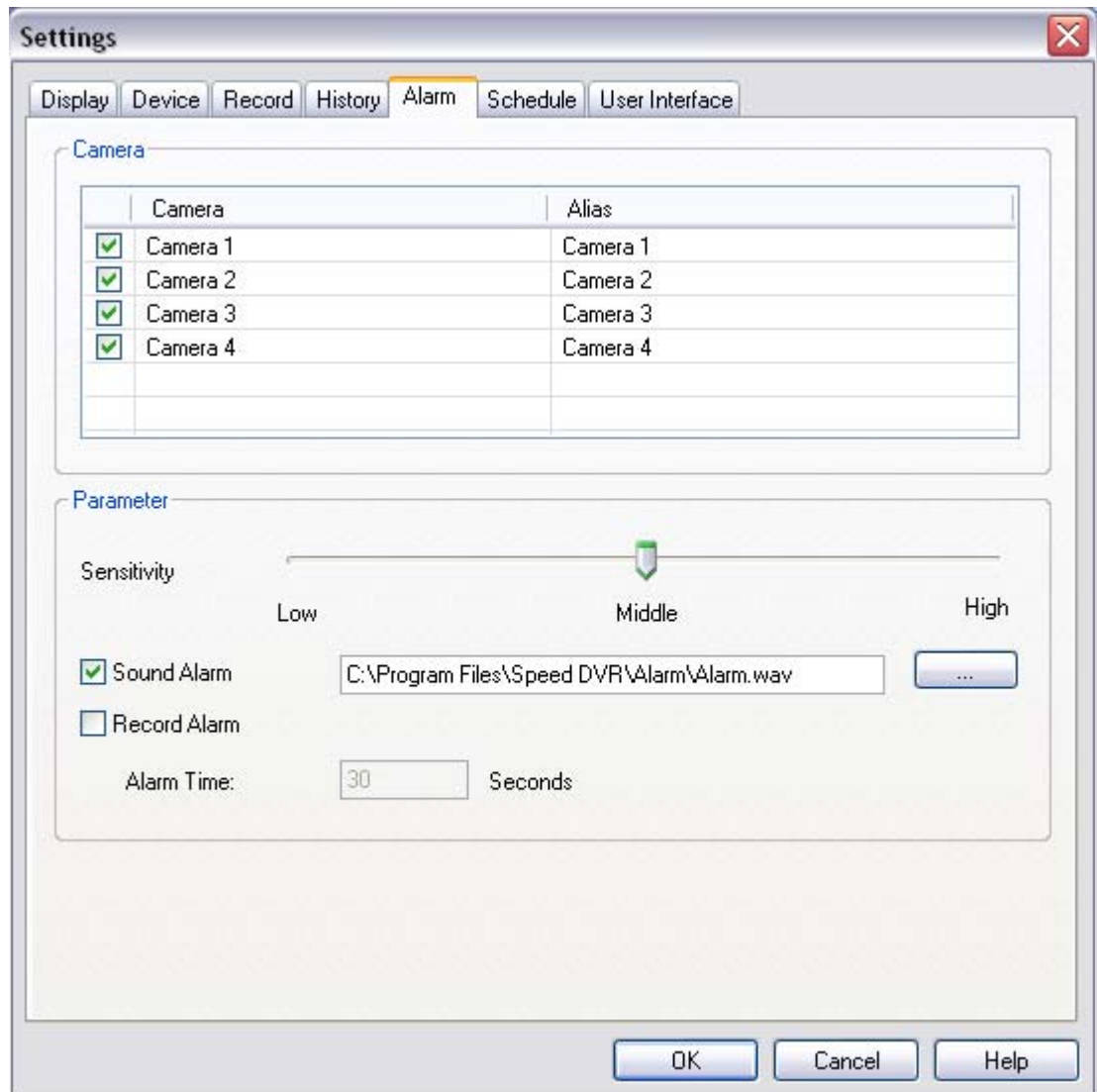
## Alert setting Configuration

Speed DVR enables to connect the camera to the computer to set alarm parameters

Speed DVR enables to set alarm parameters for the camera connected to the computer

1. Please do one of the following terms:
  - o In the "Settings" dialog box, select "Alert Settings" tab.
  - o In the context menu, select "Settings" "" Alert Settings "tab.

Find an "Alert Settings" dialog as follows:

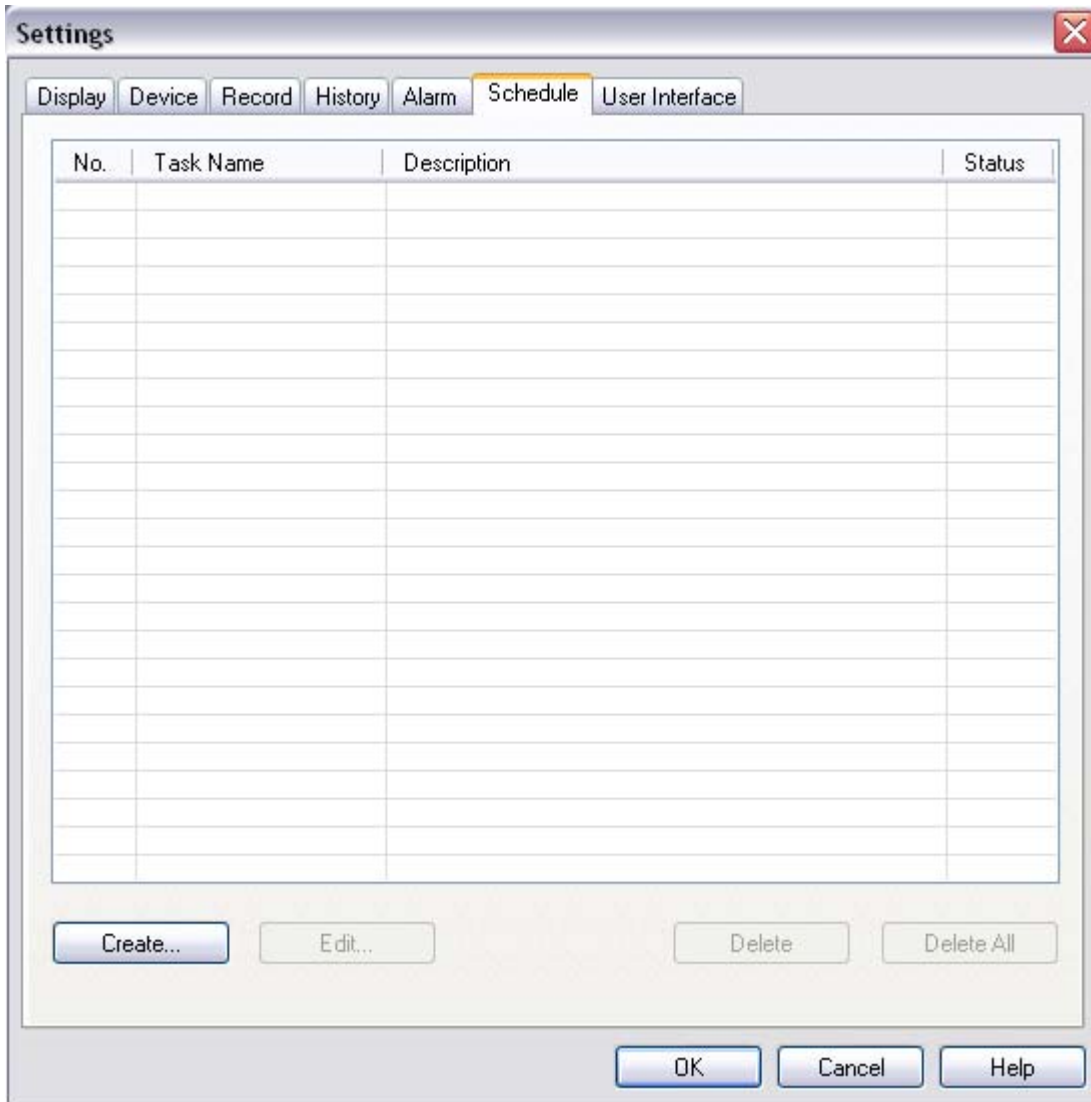


2. Select a camera.
3. Drag the slider to adjust the camera's sensitivity to "low", "Medium" or "high."
4. Select "Sound Alarm" check box, and then click the "Browse" button to select a sound file
5. Select "Recording Alert" checkbox, and then enter a specific time of recording
6. Click "OK" button



## Schedule Task Creating

Please switch to Schedule Task page in Settings panel, select "Create" button to create a schedule task, Select recording type, when time is over it will be switched to the specified channels automatically.



ITEM	Functions
Create	Create a scheduled task, the following Settings dialog box of Scheduled Tasks appears
Edit	Edit selected scheduled task, the following scheduled tasks Settings dialog box appears
Delete selected file	Delete selected file
Delete All	Delete all files

**Schedule Settings**

**Task**

Name:

Channel:

Type:  Record  Play

**Time**

Start Date:

Start Time:

Duration:  Minute(s)

OK Cancel

ITEM	Describe
Name	Task name
Channel	Select recording channel
Type	Select to record the task, or play task
Start Date	Setting start date for the scheduled task
Start Time	Set start date for the scheduled task
Lasting time	Set the duration of the specified recording

**FAQ:**

**1. Receiver**

1. Channel Indicator LED is not on:

Please check if the power adaptor of the receiver is well connected, and check if the main power is on.

2. No image, or image received is not clear:

a. Please check if the camera is switched on;

b. To check if the distance between the camera and receiver is too far or if there is something electromagnetic shielding obstacles between the camera and receiver (such as the steel structure of the building will cause great obstacles to transmit signals)

c. Does the camera and receiver that corresponds to the frequency, (Notes: within the effective reception distance , it is not allowed to have two transmitters working on the same time, otherwise they will interfere with each other, resulting in poor image quality) , and check if the receiver antenna is installed in right place.

d. Please keep Receiver antenna away from the large electromagnetic shielding materials (such as metals) as

far as possible.

e. The receiver will be interfered by high-power transmission signal which work on the same frequency as well as the working car radio surrounded.

## **2. Software**

### **1. No image on the main window:**

Please check if the LED display window character of RC431 corresponds with the emission frequency of camera, and make sure the camera is working correctly.

### **2. Image quality are not satisfactory:**

Make sure your camera and Speed DVR Video standard settings are the same, please confirm whether the settings are correct.

### **3. Video Quality are not satisfactory:**

Please refer to "Display" property page settings, change the video quality of the documents.

### **4. Video file is too large:**

If you choose the high quality of AVI format video files for recording, which will take up a lot of disk space, you could select suitable quality to save video files.

## **Accessories:**

- AV cable 1pcs
- USB cable 1pcs
- RC431 Driver CD 1pcs
- DC5V/500mA power adaptor 1pcs
- User manual 1pcs
- Warranty card 1pcs

## CM802 2.4GHz Wireless Camera



The camera connect to power supply, then camera will work.

## **FCC STATEMENT**

Changes or modifications not expressly approved by the party responsible for compliance

could void the user's authority to operate the equipment.

NOTE: This equipment has been tested and found to comply with the limits for a Class B digital device, pursuant to Part 15 of the FCC Rules. These limits are designed to provide reasonable protection against harmful interference in a residential installation. This equipment generates, uses and can radiate radio frequency energy and, if not installed and used in accordance with the instructions, may cause harmful interference to radio communications. However, there is no guarantee that interference will not occur in a particular installation. If this equipment does cause harmful interference to radio or television reception, which can be determined by turning the equipment off and on, the user is encouraged to try to correct the interference by one or more of the following measures:

- Reorient or relocate the receiving antenna.
- Increase the separation between the equipment and receiver.
- Connect the equipment into an outlet on a circuit different from that to which the receiver is connected.
- Consult the dealer or an experienced radio/TV technician for help.

RF warning statement:

The device has been evaluated to meet general RF exposure requirement. The device can be used in portable exposure condition without restriction.