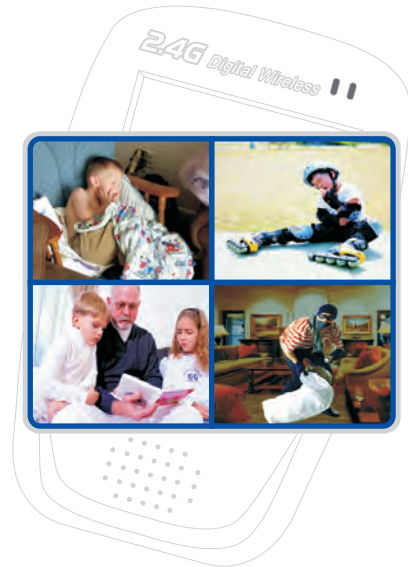


# 2.4GHz Digital Wireless Baby Monitor User Manual



## Video Surveillance 24 Hours



Any relevant alteration is subject to the latest real object !

# Contents

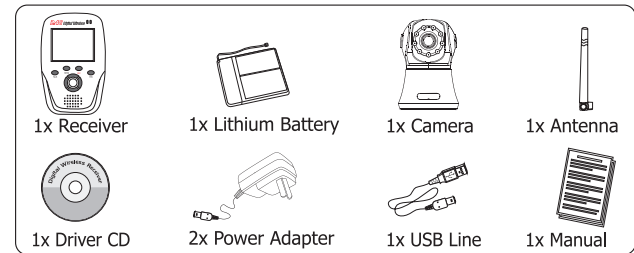
<b>I . Features</b> .....	01
<b>II . What is in the box?</b> .....	01
<b>III . Product Components Diagram</b> .....	02
1. Monitor .....	02
2. Camera .....	04
<b>IV .Product Installation</b> .....	05
<b>V .Functional Operations</b> .....	06
1. Description of Buttons .....	06
2. Menu Functions .....	08
2.1 Quad-Picture and Single-Picture .....	08
2.2 Setting .....	09
2.3 Recording .....	16
2.4 Playback .....	17
2.5 SD Formatting .....	19
<b>VI .Special Functions</b> .....	19
1. Software Installation .....	19
2. Software Introduction .....	21
3. Trigger record by voice .....	26
4. Trigger work by voice .....	26
5. Power off when low power .....	26
6. Charge .....	26
<b>VII . Technical Parameters</b> .....	27
<b>VIII . Troubleshooting</b> .....	28
<b>IX . Safety Notices</b> .....	28

Thank you to buy our digital wireless in-house baby monitor, please read the instructions carefully prior to use and keep it appropriately for future reference.

## I . Features:

- 2.4 Ghz Digital wireless kit
- SD Card Recording
- Expandable up to 4 Cameras
- Support QUAD View
- Built-in Rechargeable Battery in Both the Cameras & Receiver
- Sound Activated Alert
- Night Vision
- 100% Digital Wireless, Private, Secure Signal
- 200 Meters Outdoor Range Maximum
- 2 Way Audio

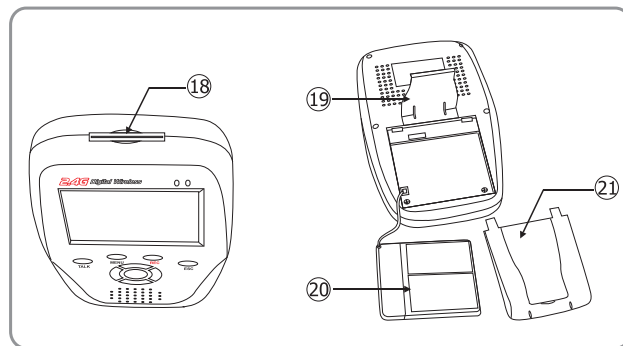
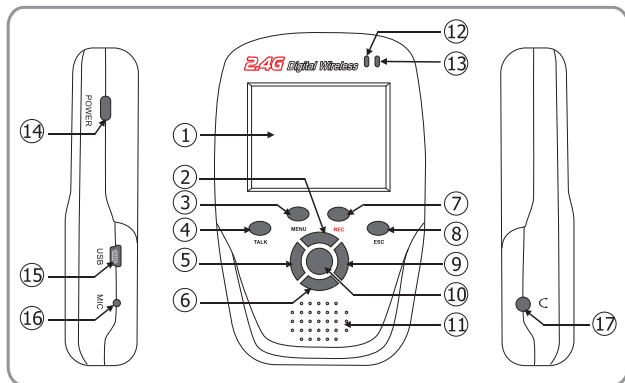
## II . What is in the box?



1. Receiver-----1 pc
2. Lithium battery -----1 pc (1700mAh/3.7V)
3. Camera-----1 pc (3 pcs are optional)
4. Power adapter -----2 pcs (DC 5V/1A Mini USB)
5. USB line (Mini) -----1 pc (connect with PC to realize more function like internet view, not for reading/transferring SD data)
6. Driver CD-----1 pc
7. Antenna-----1 pc
8. User Manual-----1 pc

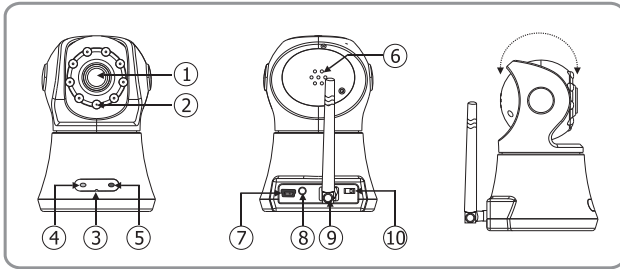
### III. Product Components Diagram:

#### 1. Monitor



- |                |                 |
|----------------|-----------------|
| ① 2.5" TFT LCD | ⑫ Power LED     |
| ② UP           | ⑬ USB LED       |
| ③ MENU         | ⑭ Power ON/OFF  |
| ④ TALK         | ⑮ USB jack      |
| ⑤ LEFT         | ⑯ Microphone    |
| ⑥ DOWN         | ⑰ Earphone jack |
| ⑦ Recording    | ⑱ SD slot       |
| ⑧ ESC          | ⑲ Stand         |
| ⑨ RIGHT        | ⑳ Battery       |
| ⑩ OK           | ㉑ Battery cover |
| ⑪ Speaker      |                 |

## 2. Camera



- |                      |                       |
|----------------------|-----------------------|
| ① Lens               | ⑥ Speaker             |
| ② IR lamps           | ⑦ USB power connector |
| ③ Microphone         | ⑧ Code Pairing        |
| ④ Status indicator   | ⑨ Antenna             |
| ⑤ Charging indicator | ⑩ Power ON/OFF        |

**Note:** It means the system is standby when status indicator keeps on and means signal is connected when it blinks;

Red charging indicator means it's being charged, green charging indicator means it's fully charged;

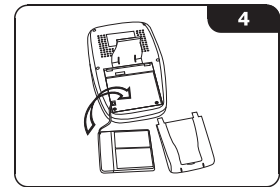
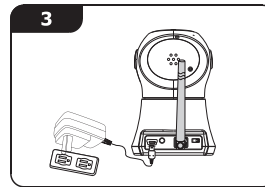
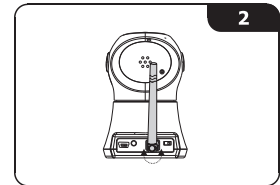
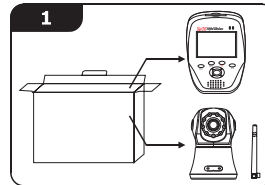
The battery of the camera can work continuously for one hour, the charging process is 2-3 hours.

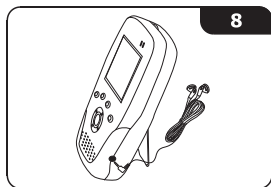
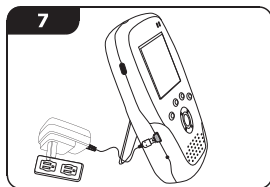
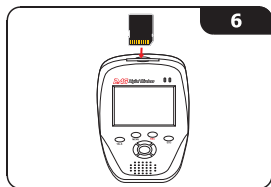
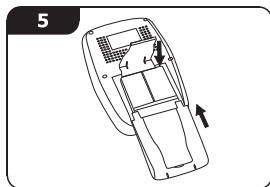
The battery of the receiver can work continuously for 5 hours, the charging process is 4 hours.

## IV. Product Installation:

1. Open the package and take out receiver and camera;
2. Install the antenna on SMA connector of the camera;
3. Charge the camera for 2-3 hours for the first use;
4. Open battery cover of receiver and load lithium battery; insert mini USB adapter to charge the battery when the power is low;
5. If you want to use earphone, take out earphone (optional) from package and connect it to earphone jack of receiver;
6. Place the camera at proper position (keep wireless camera 2M or longer away from receiver);
7. The camera may be placed at proper position or installed on attached bracket.

※ **Note:** Keep the camera and power adapter and lines away from and out of child's reach.





## V. Functional Operations

### 1. Description of Buttons

#### ● Power ON/OFF:

Power ON:

Press and hold Press ON/OFF button for 1 second to power on the monitor with LCD screen lighted on. (When the power is low, please connect USB charger and then press ESC button to exit; now you may use PC Camera Mode normally)

Move power switch to ON position to power on the camera. (Please connect the charger when the power is low)

Power OFF:

In Power ON state, press and hold Power OFF button till the

screen displays POWER OFF , power LED indicator will be turned off.

Move power switch to OFF position to power off the camera.

#### ● TALK :

Press this button to enter talkback mode, your voice is transmitted to camera speaker through monitor MIC.

#### ● MENU:

Press this button to enter menu, in menu state, press this button to return to the previous menu.

#### ● REC :

When there is SD card available in the monitor, press this button to enter Recording state, further press this button to exit the mode; each recording section is 2 minutes as default

In Playback mode, press this button to delete the selected file.

#### ● ESC :

In menu state, press this button to exit and return to the previous menu.

When the screen displays “USB PC Camera Mode”, press this button to return to normal work state and display pictures on TFT LCD screen.

#### ● UP:

In main interface, press UP button to increase the volume.

In Quad-Picture state, press UP button to return to single-picture state and display the picture from the first camera.

In menu operation, press UP button to move the cursor upwards.

#### ● DOWN :

In main interface, press DOWN button to decrease the volume.

In Quad-Picture state, press DOWN button to return to single-picture state and display the picture from the second camera.

In menu operation, press DOWN button to move the cursor downwards.

● **LEFT :**

In main interface, press LEFT button to enter AUTO REPEAT state and each picture displays for 5 seconds.

In Quad-Picture state, press LEFT button to return to single-picture state and display the picture from the third camera.

In menu operation, press LEFT button to move the cursor leftwards.

● **RIGHT :**

In main interface, press RIGHT button to circularly select 1-4# camera to display.

In Quad-Picture state, press RIGHT button to return to single-picture state and display the picture from the fourth camera.

In menu operation, press RIGHT button to move the cursor rightwards.

● **OK :**

Confirm and save the currently-selected item.

## 2. Menu Functions:

### 2.1 Quad-Picture and Single-Picture

Press **MENU** button



Press **OK** button to confirm



Press **UP/DOWN** button to select single-picture or quad-picture mode and then press **OK** button to confirm.

Single-picture



Quad-picture



In Quad-Picture state, press **UP/DOWN/LEFT/RIGHT** button to display the corresponding picture from 1-4# camera.

### 2.2 Setting:

Press **MENU** button



Press **RIGHT** button



Nine options are available in this menu including Date & Time, Pairing, Brightness, Zoom in & Zoom out, Volume, Power Saving Mode, Alarm Clock, Default, and Language.

Press UP/DOWN/LEFT/RIGHT button to select the option to be set and press **OK** button to confirm.

● **Date & Time**

Press **OK** button to enter date item and press **LEFT/RIGHT** button to select Y, M, D, HH, MM, and press **UP/DOWN** button to adjust the volume.

Press **OK** button to confirm and save, press **MENU** or **ESC** button to return to the previous menu (Setting).

Press **OK** button to confirm and enter setting menu



Press **OK** button to light on Date cursor



● **Pairing**

Press direction key to select Pairing item



Press **OK** button to select Camera 1

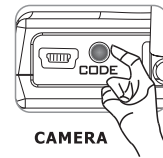


(When more than 1 cameras are selected, press **UP/DOWN/LEFT/RIGHT** key to select 1-4# camera to pair code)

Press **OK** button to confirm:



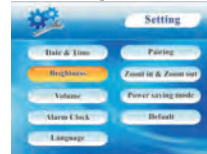
\*Note: Press MENU button to exit from Pairing mode. Press **CODE** button on the back of Camera within 30 seconds, the system returns to the main interface when pairing process succeeds and displays the picture of paired camera.



Four cameras can be paired by the above operations.

● **Brightness**

Press direction key to select Brightness item



Press **OK** button to confirm



Press **LEFT** button to decrease the brightness and press **RIGHT** button to increase the brightness. Press **OK** button to confirm and save.

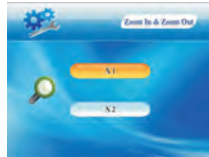


● **Zoom in & Zoom out**

Press direction key to select Zoom in & Zoom out item



Press **OK** button to confirm



Press **UP/DOWN** button to select X1 or X2 mode to display.  
Press **OK** button to confirm and save.

● **Volume**

Press direction key to select Volume item



Press **OK** button to confirm



Press **UP/DOWN** button to select Receiver Volume or Camera Volume item.

Press **OK** button to confirm and enter the selected item.



Press **LEFT** button to decrease the volume and press **RIGHT** button to increase the volume.

Press **OK** button to confirm and save, press **MENU** or **ESC** button to return to the previous menu.

● **Power Saving Mode**

Press direction key to select POWER SAVING MODE item, three work modes are available and selected by **UP/DOWN** button, press **OK** button to confirm and save, press **MENU** or **ESC** button to return to the previous menu.



**【Disable】 :**

In this mode, monitor will continuously work until the work mode is changed or power off by manual (automatically power off when the battery is used up).

**【 5 Minutes 】 :**

In this mode, the monitor will enter power saving mode and TFT LCD screen turns off if no sound is received from the camera within 5 minutes. TFT LCD screen will be reactivated once receiving sound from the camera.

**【 10 Minutes 】 :**

In this mode, the monitor will enter power saving mode and TFT LCD screen turns off if no sound is received from the camera within 10 minutes. TFT LCD screen will be reactivated once receiving sound from the camera.

● **Alarm Clock**

Press direction key to select Alarm Clock item



Press **OK** button to confirm



Press **OK** button and then press **LEFT/RIGHT** button to select HH, MM, ON/OFF, press **UP/DOWN** button to adjust the value of HH/MM or activate/deactivate the alarm clock. Press **OK** button to confirm and save, press **MENU** or **ESC** button to return to the previous menu.

When the alarm clock is ON, top right corner of TFT LCD displays:



When the alarm clock is OFF, top right corner of TFT LCD displays:



● **Default**

Press direction key to select Default item



Press **OK** button to confirm



Press **UP/DOWN** button to select YES or NO, press **OK** button to confirm and save, press **MENU** or **ESC** button to return to the previous menu.

If you select YES, TFT LCD brightness will recover to defaulted setting: Level 4.

Date & Time: 2011/01/01 00: 00  
 Camera Volume: Level 4  
 Zoom in/Zoom out: 1: 1

Monitor Volume: Level 4  
 Alarm Clock: 00: 00 OFF  
 Power Saving Mode: Disable

### ● Language

Only English version is available at present.




### 2.3 Recording

Press **MENU** button and then press **RIGHT** twice to select **REC** item, press **OK** button to enter.



### Overwrite:

If you select YES, press **OK** button to confirm, then when SD has not enough space, it will overwrite the early-recorded files.

If you select NO, press **OK** button to confirm, then when SD has not enough space, it will display: 

### Trigger Record:

Press UP/DOWN button to select the trigger time (15 Seconds, 30 Seconds, 60 Seconds), and press **OK** button to enter and confirm, press **MENU** or **ESC** button to return to the previous menu.

### 2.4 Playback

Press MENU button and then press RIGHT button for three times to select Playback item, press OK button to confirm.



In VIDEO directory, there are folders taking recording date as names, i.e.: 110101 means January 1, 2011.

In DATE directory, there are folders taking recording time as names, i.e.: 000001\_1 1MB means 00: 00: 01 Camera 1, Size: 1Mbytes. Recording file is 2 minutes as one section as default.

Press **LEFT/RIGHT** button to view files leftwards/rightwards.

Delete: select a file and press **REC** button to pop up YES or NO?

Press LEFT/RIGHT button to select YES or NO, press OK button to confirm, and press MENU or ESC button to return to the previous menu.



### ● Play a File

Press **LEFT/RIGHT** button to view the files leftwards/rightwards, press **UP/DOWN** button to select a file and press **OK** button to play, at this moment, the screen displays the time, duration and display an icon: 00: 00:05/00:00:30 ▶

In playing state, press **OK** button to pause and display an icon: 00: 00:05/00:00:30 ||

In playing state, press **RIGHT** button to play the file forwards at X2 or X4 or X8 speed and display an icon: 00: 00:05/00:00:30 ▶ 8x

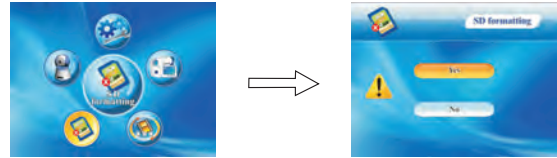
In playing state, press **LEFT** button to play the file backwards at X2 or X4 or X8 speed and display an icon: 00: 00:05/00:00:30 ◀ 8x

In playing state, press **DOWN** button to stop playing and display an icon: 00: 00:05/00:00:30 ■



### 2.5 SD Formatting

Select this option and press OK button to enter, press UP/DOWN button to select YES or NO, then press OK button to confirm.



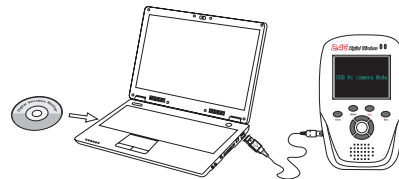
**Note:** the information and data recorded in SD card couldn't be read on or transferred to PC via USB line. If you want to read those data, insert SD card in a card reader (not in package) and then connect it with PC for reading or saving operation.

### VI. Special Functions:

When your PC can access Internet, use USB line to connect the receiver and PC and insert attached CD to install software in PC to realize remote surveillance.

#### 1. Software Installation

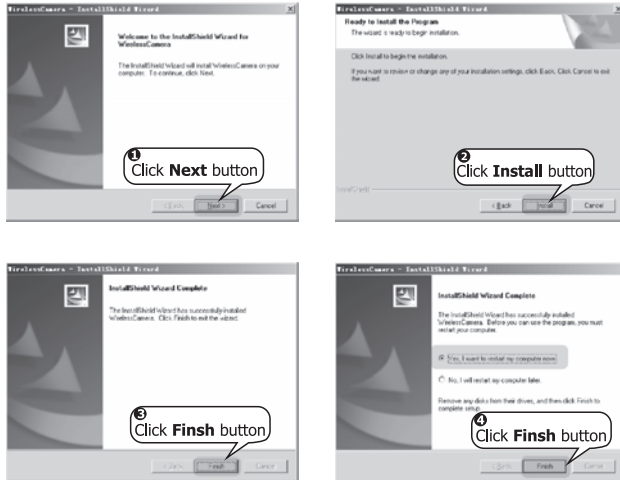
1) Connect the receiver and PC, the receiver displays “**USB PC Camera Mode**” .



2) Insert attached CD to install software

"setup\_WUSB\_WHQL\_Driver\_A1009\_A1007\_NVR\_100819.exe"  
in your PC.

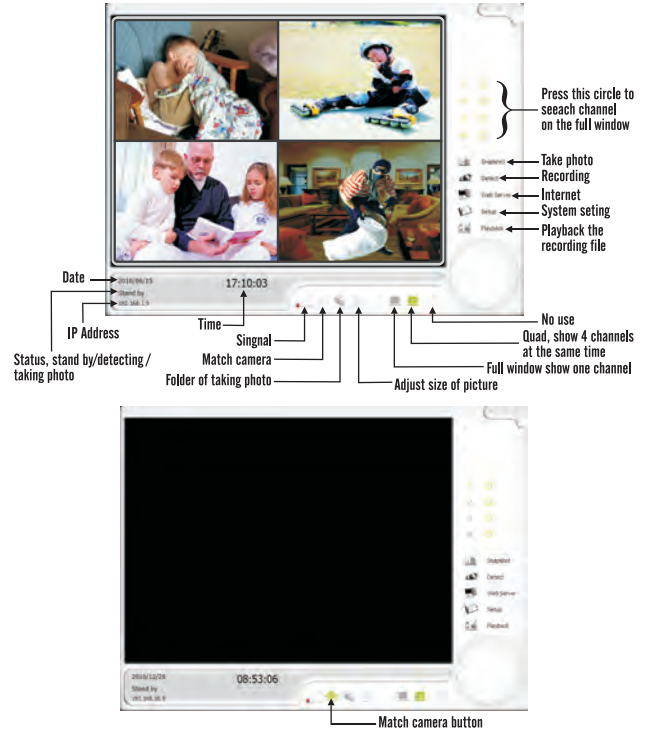
The installing steps are described as follow:

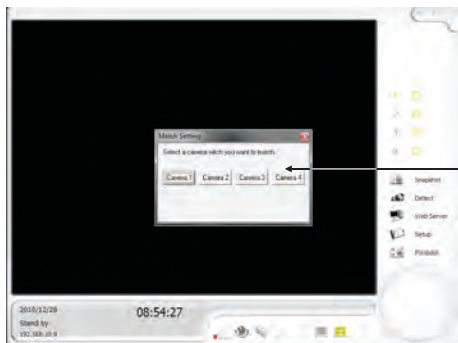


It needs to restart your PC when the installing process is finished;  
if you want to restart computer later, you may select “NO,I will  
restart my computer later.” And then click FINISH button.

## 2. Software Introduction

Open the software and use the special functions:





Show 4 channels to match, select the channel



There are 10 seconds for matching, press "CODE" button at the back of camera immediately





Image adjust

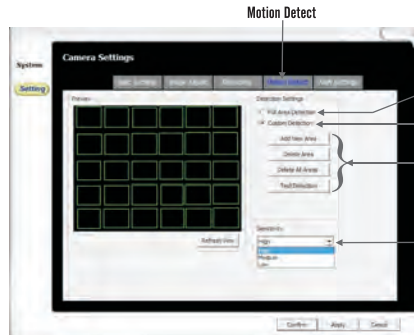
If the camera is not installed for good direction, adjust the picture easily by this way, no need to go to adjust the cameras

Recording



3 types image size:  
640x480  
320x240  
160x120

Recording full time or only when triggered  
3 types recording model:  
1. Recording full time  
2. Recording when motion detection  
3. Schedule recording



Motion Detect

Where ever there is a motion, it will be detected  
Only detect the special areas you want to attention  
Working when it is custom detection  
Adjust the detecting sensitivity

Vibrate window when there is a motion detection

You can change the words. It will show on the Operator interfaces when there is a motion detection

More sound alert for choice, special sound may make the thief fear, or you can use your words



Alert setting

Send you an email when there is a motion detection makes sure you have set the mail sever in the system setting

### 3. Trigger record by voice

When the camera detects the ambient sound that reaches some level, it shall trigger the monitor to record, i.e.: when the baby cries.

### 4. Trigger work by voice



When the camera detects the ambient sound that reaches some level, it shall awake the monitor to work and turn on TFT LCD screen, i.e.: when the bay cries.

### 5. Power off when low power

When the power is not enough, speaker shall give beep sound for 10 times and then automatically power off.

### 6. Charge

Insert Mini USB plug and press Power ON/OFF button to power on, LCD screen displays "USB PC CAMERA MODE"; at this moment press ESC button to exit and return to normal work state.

In charging state, the screen blinks to display the icon  , when it's fully charged, the screen displays  .

## VII. Technical Parameters

General	
Transmission Frequency:	ISM 2400-2483 MHz
Transmission Power:	15dBm
Unobstructed Effective Range:	200m Outdoor/40m Indoor (Based on unobstructed line of sight. Actual range will vary depending on surroundings.)
Spread Spectrum:	FHSS
Modulation Mode:	GFSK
Operating Temperature:	32°F-122°F/ 0°C - 50°C
Operating Humidity:	<85%
Camera	
Imaging Sensor Type:	CMOS
Picture Total Pixels:	640*480pxl
Minimum Illumination:	0lux (IR on)
Night Vision Distance:	3m
Lens:	4.0mm
View Angle:	60°
Operation/Charge Current :	270mA / 280mA
Power Supply:	5V USB
Dimensions (W*D*H)	68*81*100mm (with antenna)
Weight:	0.14kg
Receiver	
Resolution Supported:	320*240
Receiving Sensitivity:	-81dbm
Operation/Charge Current :	270mA / 500mA
Power Supply:	5V DC
Dimensions (W*D*H):	77*28*125mm
Weight:	0.135kg



### VIII. Troubleshooting:

1. TFT LCD screen fails to work

Check whether the battery is loaded in correct and whether the power is enough, or check whether the connection of power adapter is good, whether the power switch is opened.

2. No picture can be received

a. Check whether camera is electrified;

b. The camera is too far away from the receiver, or there is electromagnetic object between the camera and receiver (such as steel or iron structures);

c. Check whether the code is correctly paired;

d. Keep the receiver away from those electromagnetic objects such as copper or iron;

e. High-power signal exists around, vehicle wireless devices might also interrupt the signal.

### IX. Safety Notices:

1. Please read the instructions carefully prior to use;

2. This product is used for home/office surveillance only, it's not allowed for illegal monitoring purpose;

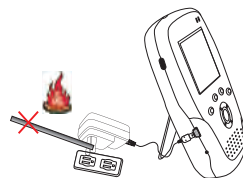
3. Do NOT dismantle the shell of power adapter, or it might cause electric shock. ⚠

4. The front cover of camera is made of glass, please be careful when use; 🍷

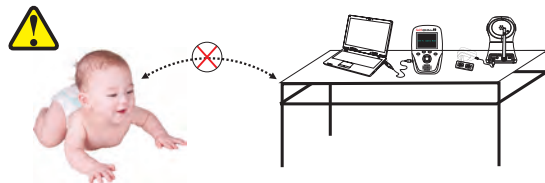
5. Please use the attached power adapter;

6. Do NOT make any conductive object touch with the front end

of power supply, or it might cause electric shock or fire accident;



7. Keep all accessories away from and out of child's reach.



Keep power cable **3 feet** away from your baby.

**Statement:** This product is used for home/office surveillance only, it's not allowed for any illegal monitoring purpose; any outcome arising from those illegal purposes shall have nothing to do with the producer.

## Warranty card

---

This card is the important evidence to receive our service, please keep it well.

① When used normally, the following services can be offered:

A. Replacement for functional disorder within 1 month.

B. Repair free of charge for functional disorder within 1 year. (Subject to ex-factory date on the label of the goods)

C. Service for all the life (only charge material cost and freight if the warranty date expires.)

② The following conditions are excluded for warranty service (repairable if needed, but will charge material cost and freight.)

A. Malfunctions or damages by mistaken installation or using the products exceeding the limited operating conditions.

B. Malfunctions or damages by self disassembled or repair and any other misuse.

C. Spare parts missed, artificial damages.

D. Unmatched products.

③ Repair cycle: Under common circumstance, if there are less than ten sets, they will be repaired in three working days from the receipt of the products. If more than 10 sets, they will be repaired ASAP according to the quantity.

**Product name:** \_\_\_\_\_

**User's name:** \_\_\_\_\_

**User's address:** \_\_\_\_\_

**Tel:** \_\_\_\_\_ **Zip code:** \_\_\_\_\_

**Purchase date:** \_\_\_\_\_

**Invoice No.:** \_\_\_\_\_

**Distributor:** \_\_\_\_\_

**Contact person:** \_\_\_\_\_ **Tel:** \_\_\_\_\_

**Dealer:( Valid by sealed)**

---

## **FCC warning statement**

This equipment has been tested and found to comply with the limits for a Class B digital device, pursuant to part 15 of the FCC Rules. These limits are designed to provide reasonable protection against harmful interference in a residential installation. This equipment generates, uses and can radiate radio frequency energy and, if not installed and used in accordance with the instructions, may cause harmful interference to radio communications. However, there is no guarantee that interference will not occur in a particular installation. If this equipment does cause harmful interference to radio or television reception, which can be determined by turning the equipment off and on, the user is encouraged to try to correct the interference by one or more of the following measures:

- Reorient or relocate the receiving antenna.
- Increase the separation between the equipment and receiver.
- Connect the equipment into an outlet on a circuit different from that to which the receiver is connected.
- Consult the dealer or an experienced radio/TV technician for help

This equipment complies with FCC radiation exposure limits set forth for an uncontrolled environment. This equipment should be installed and operated with minimum 20 cm between the radiator and your body. This transmitter must not be collocated or operating in conjunction with any other antenna or transmitter unless authorized to do so by the FCC.

Changes or modifications not expressly approved by the party responsible for compliance could void the user's authority to operate the equipment.