

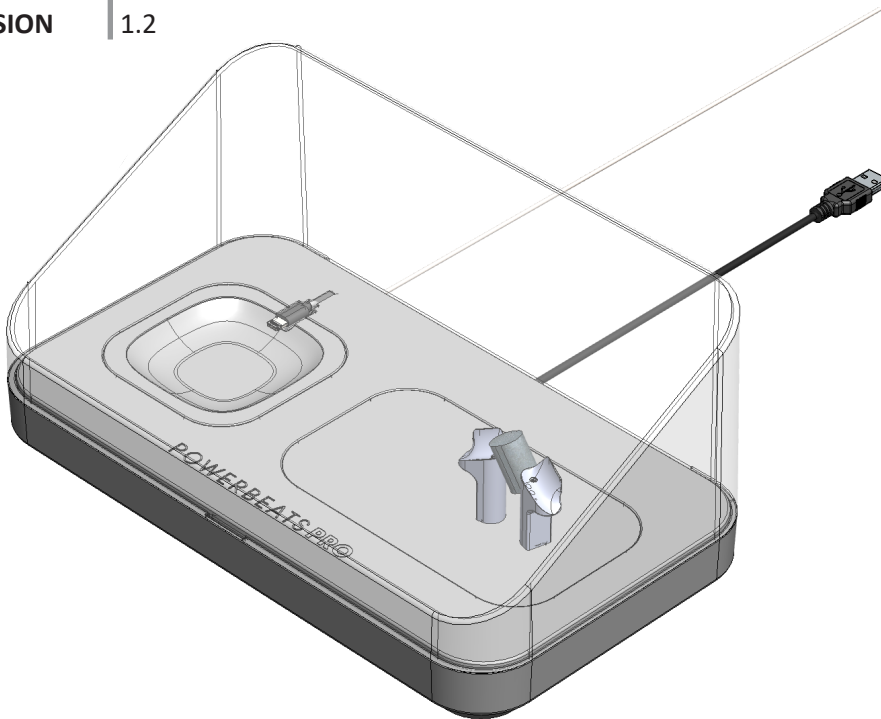
# PowerBeats Pro Countertop Display - Channel Assembly Instructions

---

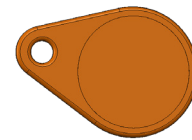
## Kit Contents

---

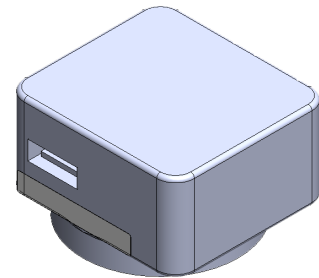
KIT NUMBER 850-074027  
VERSION 1.2



(1) Countertop Display



(1) RFID Key



(1) Power Supply

## Product Required for Assembly

---

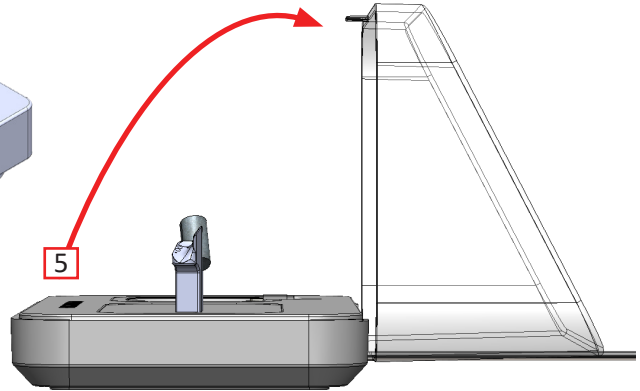
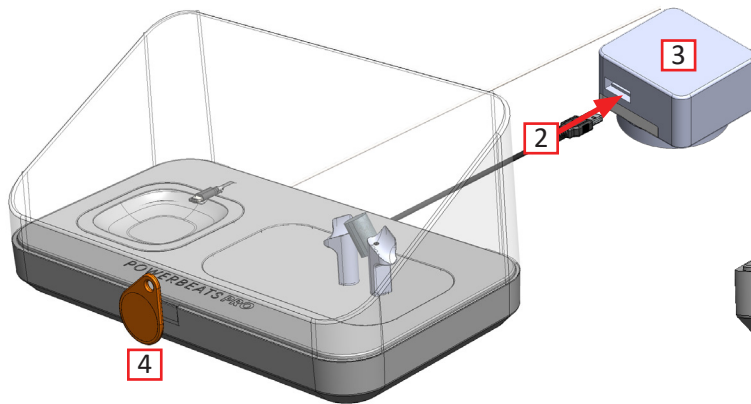


(1) PowerBeats Pro Wireless Earphones



(1) PowerBeats Pro Charging Case

# Assembly Instructions



1 Remove the **Countertop Display** from the packaging.

2 Connect the USB-C cable into the **Power Supply**.

3 Connect the **Power Supply** to a power source.

! The Clear Acrylic Lid must be opened within 5 seconds after using the RFID Key or it will lock.

4 Use the **RFID Key** to unlock the Clear Acrylic Lid on the **Countertop Display**.

5 Open the Clear Acrylic Lid.

6 Connect the **PowerBeats Pro Charging Case** to the Lightning Cable.

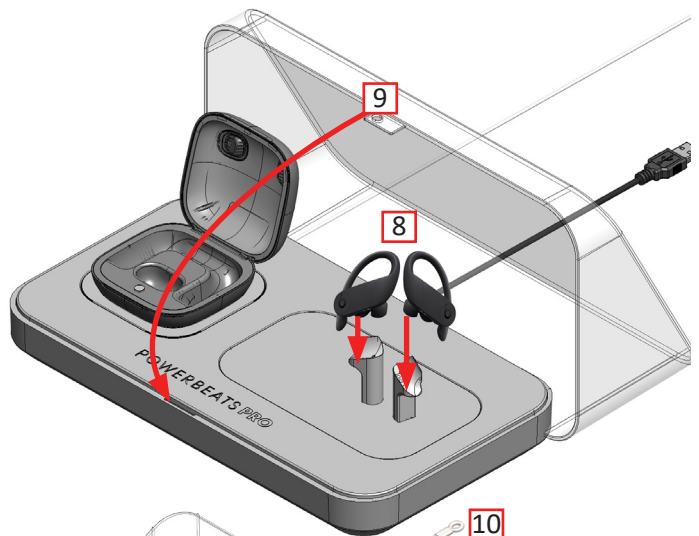
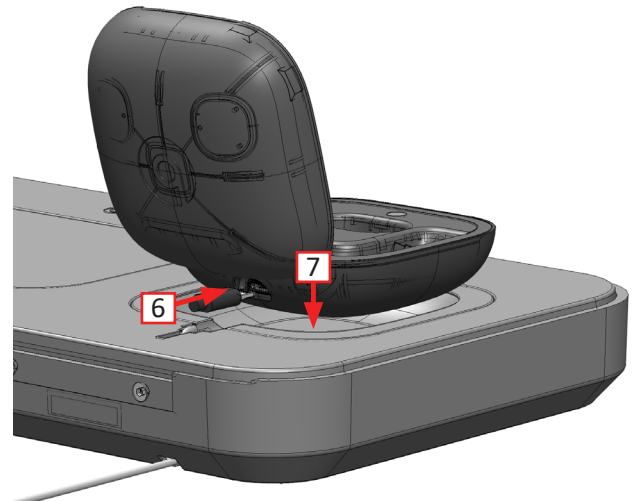
7 Set the **PowerBeats Pro Charging Case** into the slot on the display.

8 Set the **PowerBeats Pro Wireless Earphones** onto the Magnetic Mounting Posts.

9 Close the Clear Acrylic Lid

! The Clear Acrylic Lid will automatically lock.

10 Secure the **Countertop Display** using the Security Tether.



(END)

## FCC Statement

This device and its antenna must not be located or operating in conjunction with any other antenna and transmitter.

This device complies with part 15 of the FCC rules. Operation is subject to the following two conditions: (1) this device may not cause harmful interference, and (2) this device must accept any interference received, including interference that may cause undesired operation.

NOTE: The manufacturer is not responsible for any radio or TV interference caused by unauthorized modifications to this equipment. Such modifications could void the user's authority to operate the equipment.

NOTE: This equipment has been tested and found to comply with the limits for a Class B digital device, pursuant to part 15 of the FCC Rules. These limits are designed to provide reasonable protection against harmful interference in a residential installation. This equipment generates uses and can radiate radio frequency energy and, if not installed and used in accordance with the instructions, may cause harmful interference to radio communications. However, there is no guarantee that interference will not occur in a particular installation. If this equipment does cause harmful interference to radio or television reception, which can be determined by turning the equipment off and on, the user is encouraged to try to correct the interference by one or more of the following measures:

- Reorient or relocate the receiving antenna.
- Increase the separation between the equipment and receiver.
- Connect the equipment into an outlet on a circuit different from that to which the receiver is connected.
- Consult the dealer or an experienced radio/TV technician for help.

RF exposure information: This equipment complies with FCC radiation exposure limits set forth for an uncontrolled environment. This equipment should be installed and operated with minimum distance 20cm between the radiator & your body.

Changes or modifications not expressly approved by the party responsible for compliance could void the user's authority to operate the equipment.