



WiBox® 2100E
Device Server User Guide

Intellectual Property

© 2013 Lantronix, Inc. All rights reserved. No part of the contents of this book may be transmitted or reproduced in any form or by any means without the written permission of Lantronix.

WiBox, *DSTni* and *Lantronix* are registered trademarks of Lantronix, Inc. in the United States and other countries. *SmartRoam* and *DeviceInstaller* are trademarks of Lantronix, Inc. U.S. Patent 7,309,260. Additional patents pending.

Windows and *Internet Explorer* are registered trademarks of Microsoft Corporation. *Mozilla* and *Firefox* are registered trademarks of the Mozilla Foundation. *Chrome* is a trademark of Google, Inc. *Opera* is a trademark of Opera Software ASA Corporation Norway. *Safari* is a registered trademark of Apple, Inc. All other trademarks and trade names are the property of their respective holders.

Warranty

For details on the Lantronix warranty replacement policy, please go to our web site at www.lantronix.com/support/warranty/index.html.

Contacts

Lantronix, Inc. Corporate Headquarters

167 Technology Drive
Irvine, CA 92618, USA

Toll Free: 800-526-8766
Phone: 949-453-3990
Fax: 949-453-3995

Technical Support

Online: www.lantronix.com/support

Sales Offices

For a current list of our domestic and international sales offices, go to the Lantronix web site at <http://www.lantronix.com/about/contact/>

Revision History

Date	Rev.	Comments
June 2004	A	Initial draft
September 2004	B	Formatting changes and technical corrections
October 2004	C	Updated for firmware version 5.8.0.1
October 2004	D	Minor corrections
May 2005	E	Updated for firmware version 6.0.0.1

Date	Rev.	Comments
July 2006	F	Updated for firmware version 6.1.0.2
April 2007	G	Updated for firmware version 6.4
May 2007	H	Updated for firmware version 6.5
July 2007	I	Updated for firmware version 6.5.0.5
May 2008	J	Updated for firmware version 6.6
June 2008	K	Minor corrections
January 2010	L	Updated for firmware version 6.7 and minor corrections. Added new fields: Minimum TX Data Rate, Max TX Failures, and Automatic Host MAC Detection. Added Wireless Status (WS) command.
August 2013	M	Updated for firmware version 6.8.0.4

Table of Contents

Intellectual Property _____	2
Warranty _____	2
Contacts _____	2
Revision History _____	2
List of Tables _____	8
List of Figures _____	8
1: Using This Guide _____	9
Purpose and Audience _____	9
Chapter Summary _____	9
Additional Documentation _____	10
2: Introduction _____	11
Applications _____	11
Application Examples _____	12
Serial Tunneling – Network _____	12
Ad Hoc Network _____	13
Serial Tunneling – Infrastructure _____	13
Ad Hoc WiBox 2100E Connection _____	14
WiBox 2100E with Ethernet _____	14
Protocol Support _____	14
Configuration Methods _____	14
Addresses and Port Numbers _____	15
Hardware Address _____	15
IP Address _____	15
WLAN Settings _____	15
Port Numbers _____	15
Serial Connector Pinouts _____	15
WiBox 2100E Network Interface _____	17
Ethernet Connector Pinouts _____	17
LEDs _____	17
Technical Specifications _____	18
3: Getting Started _____	19
Installing the WiBox 2100E _____	19
Configuring the WiBox 2100E _____	20
Installing DeviceInstaller _____	23
Viewing the Current Configuration _____	24
4: Web Manager Configuration _____	26
Accessing Web Manager through a Web Browser _____	26
Network Configuration _____	27
Network Mode Configuration _____	27

Automatic IP Address Configuration _____	28
Static IP Address Configuration _____	28
Ethernet Configuration _____	29
Server Configuration _____	30
Hostlist Configuration _____	31
Channel 1 and Channel 2 Configuration _____	32
Serial Settings _____	33
Connection Settings - TCP _____	35
Connection Settings - UDP _____	38
WLAN Configuration _____	40
Updating Settings _____	43
Applying Defaults _____	43
5: Telnet or Serial Port (Setup Mode) Configuration _____	44
Accessing Setup Mode _____	44
Telnet Connection _____	44
Serial Port Connection _____	45
Exiting Setup Mode _____	45
6: Setup Mode: Server Configuration _____	46
Server Configuration (Option 0) _____	46
Network Mode _____	46
IP Address _____	46
Set Gateway IP Address _____	46
Netmask: Number of Bits for Host Part _____	47
Set DNS Server IP Address _____	47
Change Telnet Configuration Password _____	47
Automatic Host MAC Detection _____	48
DHCP Name _____	48
7: Setup Mode: Channel Configuration _____	49
Channel 1 (Option 1) _____	49
Baudrate _____	49
I/F (Interface) Mode _____	50
Flow _____	51
Port Number _____	51
Connect Mode _____	52
Send the Escape Sequence (+++) in Modem Mode _____	58
Show IP addr after 'RING' _____	58
Auto Increment Source Port _____	59
Remote IP Address _____	59
Remote Port _____	59
DisConnMode _____	59
Flush Mode (Buffer Flushing) _____	60
Pack Control _____	61
Packing Interval _____	62
Trailing Characters _____	62

Send Characters_____	62
DisConnTime (Inactivity Timeout)_____	62
Send Characters_____	62
Telnet Terminal Type _____	63
Channel (Port) Password _____	63
WLAN Settings _____	63
Topology_____	63
Network Name (SSID) _____	63
Adhoc Network Channel_____	63
Security Suite _____	63
WEP_____	64
WPA_____	64
802.11i/WPA2-Personal _____	65
Fixed or Automatic Data Rate _____	65
Transmission Data Rate_____	65
Minimum TX Data Rate _____	65
Enable Power Management_____	66
Enable Soft AP Roaming _____	66
Max TX Failures _____	66
8: Setup Mode: Advanced Settings _____	67
Expert Settings (Option 5)_____	67
TCP Keepalive time in seconds _____	68
ARP Cache timeout in seconds _____	68
CPU Performance _____	68
Disable Monitor Mode at bootup _____	68
HTTP Port Number _____	68
MTU Size _____	68
TCP Re-transmission Timeout _____	69
Enable Alternate MAC _____	69
Ethernet Connection Type _____	69
Configurable Server Port Number _____	69
Automatic Host MAC Detection _____	69
Security Settings (Option 6) _____	69
Disable SNMP _____	70
SNMP Community Name _____	70
Disable Telnet Setup _____	70
Disable TFTP Firmware Upgrade_____	70
Disable Port 77FE (Hex)_____	70
Disable Web Server _____	70
Disable Web Setup_____	70
Disable ECHO Ports_____	71
Enable Encryption _____	71
Enable Encryption _____	71
Enable Enhanced Password _____	71

Default Settings (Option 7) _____	72
Channel 1 Configuration _____	72
Channel 2 Configuration _____	72
WLAN Settings _____	72
Expert Settings _____	73
Security Settings _____	73
Exit Configuration Mode _____	74
9: Monitor Mode _____	75
Entering Monitor Mode via the Serial Port _____	75
Entering Monitor Mode via the Network Port _____	75
Monitor Mode Commands _____	75
10: Updating Firmware _____	78
Obtaining Firmware _____	78
Reloading Firmware _____	78
Using TFTP: Graphical User Interface _____	78
Using TFTP: Command Line Interface _____	79
Network Upgrade _____	79
Recovering the Firmware Using the Serial Port and DeviceInstaller _____	79
WLAN Country Setting _____	80
11: Wireless Bridging _____	81
Configuring the WiBox 2100E in Bridging Mode _____	81
Method 1 _____	81
Method 2 _____	81
Method 3 _____	82
12: Troubleshooting _____	83
Diagnostic LED States _____	83
Problems and Error Messages _____	83
Technical Support _____	86
A: Mounting Brackets _____	87
B: Binary to Hexadecimal Conversions _____	88
Converting Binary to Hexadecimal _____	88
Conversion Table _____	88
Scientific Calculator _____	88
C: Compliance _____	90
Compliance Information _____	90
Regulatory Information _____	91
USA Federal Communications Commission (FCC) Notice _____	91
Canada – Industry Canada Notice _____	92
Europe – R&TTE Directive 99/5/EC, Wireless Notice _____	93
Australia & New Zealand – Wireless Notice _____	93

List of Tables

Table 2-1. WiBox 2100E LEDs	17
Table 2-2. WiBox 2100E Technical Specifications	18
Table 6-1. BootP/DHCP/AutoIP options	46
Table 6-2. Standard IP Network Netmasks	47
Table 7-1. Interface Mode Options	50
Table 7-2. Common Interface Mode Settings	50
Table 7-3. Flow Control Options	51
Table 7-4. Reserved Port Numbers	51
Table 7-5. Connect Mode Options	52
Table 7-6. Manual Connection Address Example	54
Table 7-7. Modem Mode Messages	57
Table 7-8. Modem Mode Commands	58
Table 7-9. Disconnect Mode Options	60
Table 7-10. Flush Mode Options	60
Table 7-11. Pack Control Options	61
Table 9-1. Monitor Mode Commands	75
Table 9-2. Command Response Codes	77
Table 10-1. Firmware Files	78

List of Figures

Figure 2-1. Serial Tunneling Infrastructure Network Example	12
Figure 2-2. Ad Hoc Network Example	13
Figure 2-3. Serial Tunneling Infrastructure Example	13
Figure 2-4. Direct WiBox 2100E to WiBox 2100E Connection	14
Figure 2-5. DB9M DTE Serial Connector	16
Figure 2-6. RS-422 4-Wire Pinouts	16
Figure 2-7. RS-485 2-Wire Pinouts	16
Figure 2-8. Network Interface	17
Figure 2-9. RJ45 Ethernet Connector	17
Figure 3-1. WiBox 2100E Connected for Configuration	19
Figure 4-1. Web Manager	26
Figure 4-2. Network Settings	27
Figure 4-3. Server Settings	30
Figure 4-4. Hostlist Settings	32
Figure 4-5. Channel Serial Settings	33
Figure 4-6. TCP Connection Settings	36
Figure 4-7. UDP Connection Settings	39
Figure 4-8. WLAN Settings	41
Figure 5-1. MAC Address	44
Figure 5-2. Setup Menu Options	45
Figure 7-1. Serial Port Parameters	49
Figure 7-2. Hostlist Option	55
Figure 8-1. Expert Settings	67
Figure 10-1. TFTP Window	79

1: Using This Guide

Purpose and Audience

This guide provides the information needed to configure, use, and update the Lantronix® WiBox® 2100E device server. It is for network administrators, system integrators, and those responsible for installing and maintaining the WiBox 2100E.

Chapter Summary

The remaining chapters in this guide include:

Chapter	Description
2: Introduction	Describes the main features of the WiBox 2100E and the protocols it supports.
3: Getting Started	Describes the steps to the physical installation and initial configuration of the WiBox 2100E.
4: Web Manager Configuration	Details using the Web Manager to set parameters such as port and server properties.
5: Telnet or Serial Port (Setup Mode) Configuration	Provides instructions for accessing Setup Mode (command line interface) using a Telnet connection through the network or a terminal or terminal emulation program through the serial port.
6: Setup Mode: Server Configuration	Details the network (server) settings
7: Setup Mode: Channel Configuration	Details the serial port settings.
8: Setup Mode: Advanced Settings	Details expert and security settings and explains how to reset the unit to default values.
9: Monitor Mode	Provides instructions for accessing and using the command line interface for monitoring the network and diagnosing problems.
10: Updating Firmware	Provides instructions for obtaining the latest firmware and updating the WiBox 2100E.
11: Wireless Bridging	Provides information on the WiBox 2100E wireless bridging feature, which will be available for WiBox 2100E with firmware version 6.2 or later.
12: Troubleshooting	Describes common problems and error messages and how to contact Lantronix Technical Support.
A: Mounting Brackets	Provides dimensions of the brackets for mounting the WiBox 2100E.

B: Binary to Hexadecimal Conversions	Provides instructions for converting binary numbers to hexadecimals.
C: Compliance Information	Provides compliance information.

Additional Documentation

Visit the Lantronix web site at <http://www.lantronix.com/support/documentation.html> for the latest documentation and the following additional documentation:

Document	Description
<i>WiBox 2100E Device Server Quick Start Guide</i>	Provides instructions for getting your WiBox 2100E up and running.
<i>DeviceInstaller Online Help</i>	Provides information on using the DeviceInstaller™ utility to assign an IP address and view current configuration settings.
<i>Com Port Redirector Online Help</i>	Provides information on using the Windows-based utility to create a virtual com port.
<i>Secure Com Port Redirector User Guide</i>	Provides information on using the Windows-based utility to create a virtual com port in a secure environment.

2: Introduction

The WiBox 2100E family of wireless device servers provides serial-to-wireless network connectivity. They enable you to access, control, monitor, or share on an 802.11b/g wireless network virtually any serial device or equipment remotely.

The WiBox 2100E device server provides a fully integrated solution that combines an operating system, embedded Web server, full TCP/IP protocol stack with an 802.11b/g transceiver supporting WEP, WPA and 802.11i/WPA2-Personal security, and two high-speed serial ports into a small compact package.

Wired Equivalent Privacy (WEP), Wireless Protected Access (WPA), and 802.11i/WPA2-Personal are available to guarantee the security of the wireless communication. WEP uses an RC4 encryption algorithm with a configured 64-bit or 104-bit key to scramble the data. WPA uses TKIP, which expands upon WEP by changing the key automatically every session, detecting intrusion and using improved authentication. For additional security, the WiBox 2100E offers secure data communications using Rijndael Advanced Encryption Standards (AES).

This device server allows serial devices to connect and communicate over 802.11b/g wireless networks using IP protocol (TCP for connection-oriented stream applications and UDP for datagram applications). The WiBox 2100E also supports RS-422 4-wire and RS-485 2-wire protocols for multipoint connections. The unit provides an Ethernet connection as well.

The Lantronix exclusive SmartRoam™ technology takes a proactive approach to transferring connectivity from one access point (AP) to another AP belonging to the same ESS (having the same SSID or Network Name). SmartRoam continuously tracks the signal strength of APs within range to smoothly and automatically transition to an AP with a stronger signal.

Note: The WiBox 2100E with firmware version 6.2 and later is configurable for wireless bridging (see [11: Wireless Bridging](#)). This allows a host connected to the WiBox 2100E over a wired Ethernet interface to be accessible over a wireless network.

Name	Model	Part Numbers
WiBox 2100E with Ethernet	WiBox 2100E	<ul style="list-style-type: none">◆ WB21000EG1-01 (115 VAC, 50/60 Hz adapter)◆ WB21000EG2-01 (100-240 VAC, 50/60 Hz Intl. adapter)◆ WB2100EGB-01 (WiBox 2100E board only)◆ WB2100EG0-01 (No power supply)

Applications

The WiBox 2100E device server connects serial devices such as those listed below to wireless and Ethernet networks using the IP protocol family.

- ◆ Security alarms
- ◆ Access control devices
- ◆ Fire control panels
- ◆ Time/attendance clocks and terminals
- ◆ ATM machines
- ◆ Data collection devices

- ◆ RFID readers
- ◆ Universal Power Supply (UPS) Management units
- ◆ Telecommunications equipment
- ◆ Data display devices
- ◆ Virtually any RS-232, RS-422 4-wire or RS-485 2-wire asynchronous serial device

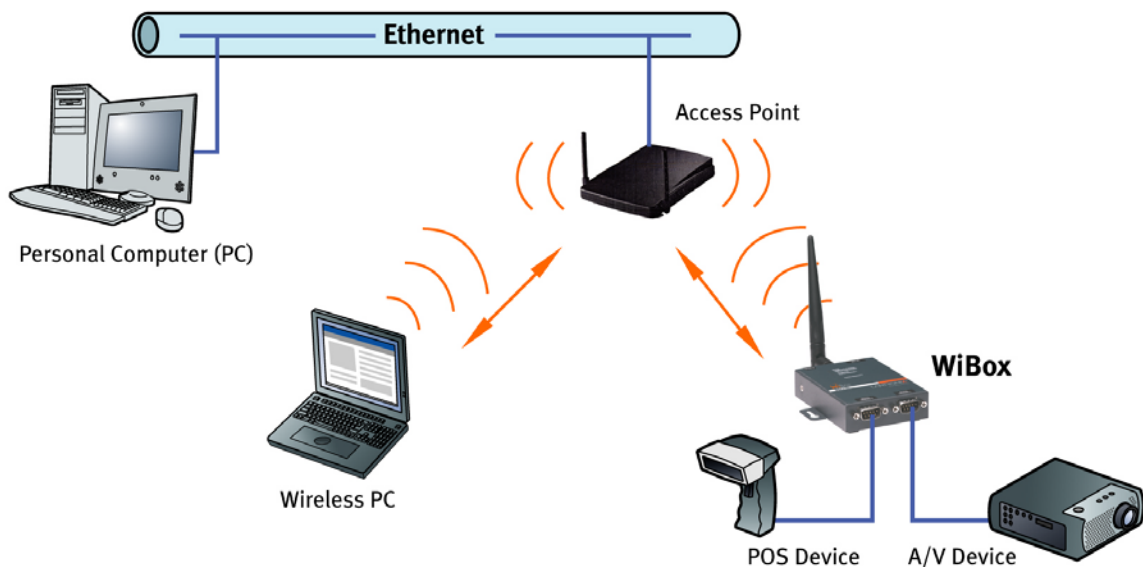
Application Examples

The WiBox 2100E has two serial ports and an 802.11b/g transceiver. Each serial port is connected to the serial communication port of a device. The wireless transceiver connects to another wireless device or to an Access Point (AP). The WiBox 2100E also provides an Ethernet connection.

This section includes typical scenarios for using the WiBox 2100E.

Serial Tunneling – Network

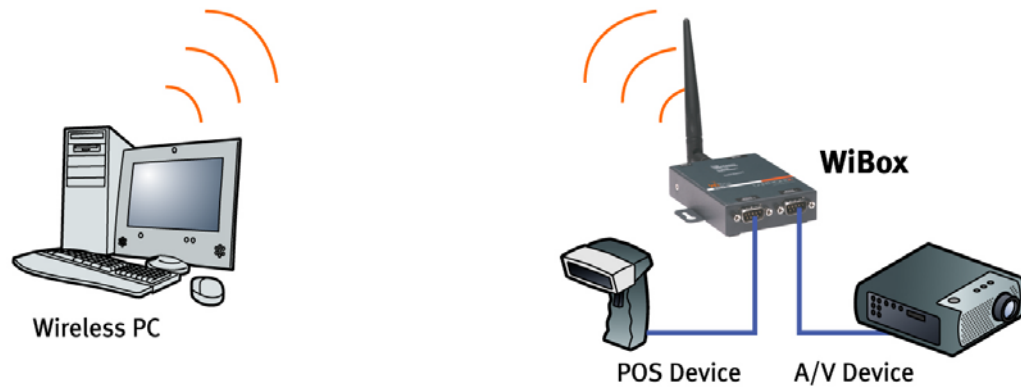
Figure 2-1. Serial Tunneling Infrastructure Network Example



A PC connected to an AP via an Ethernet connection and a PC with a wireless connection to the AP LAN access the WiBox 2100E as though they are connected to it directly. The combination of the WiBox 2100E, a PC, and the Lantronix Redirector software allows the PC to communicate directly to the WiBox 2100E's serial devices, providing wireless serial tunneling.

Ad Hoc Network

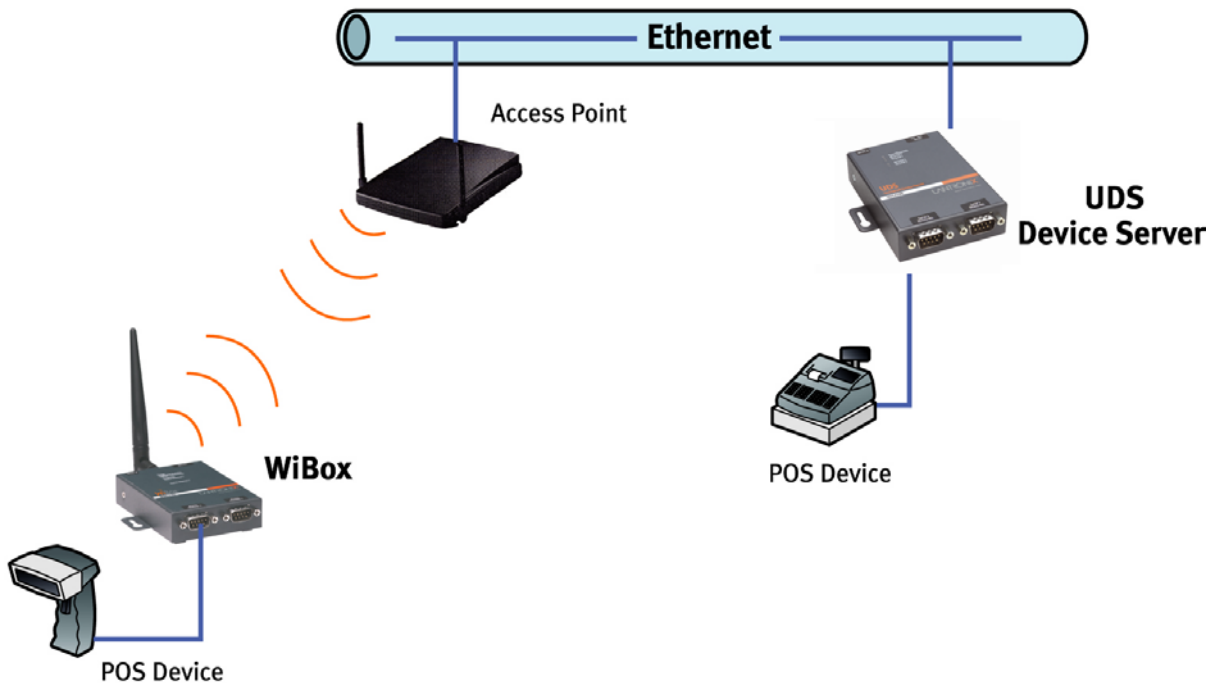
Figure 2-2. Ad Hoc Network Example



In the example above, the AP is not present. The PC makes a direct wireless connection with the WiBox 2100E to manage serial devices. Without an AP, it is a peer-to-peer relationship.

Serial Tunneling – Infrastructure

Figure 2-3. Serial Tunneling Infrastructure Example



In the example above, the WiBox 2100E communicates with another device server via the AP. The WiBox device server, in this example, is connected via an Ethernet connection to the AP. In this way, the WiBox 2100E and the device server communicate directly and can transfer information between their serial devices.

Ad Hoc WiBox 2100E Connection

Figure 2-4. Direct WiBox 2100E-to-WiBox 2100E Connection



In the example above, the two WiBox 2100E devices have established an Ad Hoc peer-to-peer relationship. They communicate directly to each other's serial devices without a PC or an AP.

WiBox 2100E with Ethernet

With this model, you can select either a wireless or an Ethernet connection.

Protocol Support

The WiBox 2100E device server uses the TCP/IP protocol stack for network communications. Other supported protocols include:

- ◆ ARP, UDP, TCP, ICMP, Telnet, TFTP, AutoIP, DHCP, HTTP, and SNMP for network communications and management.
- ◆ TCP, UDP, and Telnet for connections to the serial port.
- ◆ TFTP for firmware and web page updates.
- ◆ IP for addressing, routing, and data block handling over the network.
- ◆ User Datagram Protocol (UDP) for typical datagram applications in which devices interact with other devices without maintaining a point-to-point connection.

Configuration Methods

After the physical installation of the WiBox 2100E, configuration is required. For the unit to operate correctly on a network, it must have:

- ◆ A unique IP address
- ◆ Appropriate settings for network communications

Methods for logging into the device server and assigning IP addresses (as well as setting other configurable parameters) include:

Web Manager: Through a web interface, configure the WiBox 2100E and its settings using the WiBox 2100E's Web Manager. (See [4: Web Manager Configuration](#).)

Serial & Telnet Ports: There are two approaches to accessing Setup Mode. Make a Telnet connection to the network port (9999) or connect a terminal (or a PC running a terminal emulation program) to the unit's serial port. See [Telnet or Serial Port \(Setup Mode\) Configuration](#).

DeviceInstaller: This utility provides a GUI interface for assigning the IP address, viewing the current configuration, and updating firmware. To use DeviceInstaller for communication to a WiBox 2100E over a wireless network, you must configure the WLAN network settings first. No such configuration is required for using DeviceInstaller over an Ethernet network.

Addresses and Port Numbers

Hardware Address

The hardware address is also referred to as the Ethernet address or the MAC address. The first three bytes of the Ethernet address are fixed and read 00-20-4A, identifying the unit as a Lantronix product. The fourth, fifth, and sixth bytes are unique numbers assigned to each unit.

Example: 00-20-4A-14-01-18

IP Address

Every device connected to an IP network must have a unique IP address. This address references the specific unit. DHCP is enabled by default, and the WiBox 2100E automatically accepts an IP address once the wireless settings are configured for the wireless network.

WLAN Settings

Before the WiBox 2100E can communicate on an 802.11b/g wireless network, the WLAN settings must match the wireless network. By default, the WiBox 2100E is set to Ad Hoc network mode and its wireless network name (SSID) is **LTRX_IBSS**.

Port Numbers

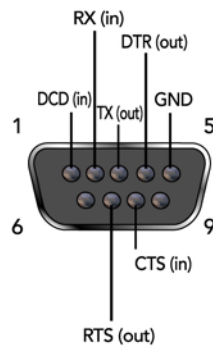
Every TCP connection and every UDP datagram is defined by a destination IP address and a port number. For example, a Telnet application commonly uses port number 23. A port number is similar to an extension on a phone system.

The unit's serial channel (port) can be associated with a specific TCP/UDP port number. Port number 9999 is reserved for access to the unit's Setup (configuration) Mode window. Ports 0-1024 are reserved as well. (For more information on reserved port numbers, refer to [Port Number](#).)

Serial Connector Pinouts

The two DB9M DTE serial ports provide default settings for RS-232C communications of 9600 baud, 8 bits, no parity, and 1 stop bit (9600, 8, N, 1).

Figure 2-5. DB9M DTE Serial Connector



Alternatively, you can configure the WiBox 2100E for RS-422 4-wire communications ([Figure 2-6](#)) or for RS-485 2-wire communications ([Figure 2-7](#)).

Figure 2-6. RS-422 4-Wire Pinouts

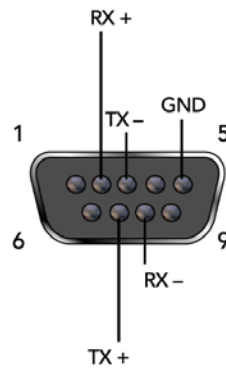
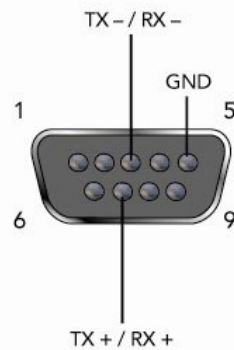


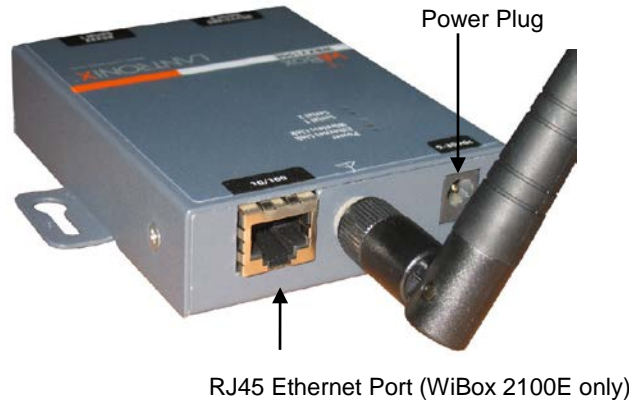
Figure 2-7. RS-485 2-Wire Pinouts



WiBox 2100E Network Interface

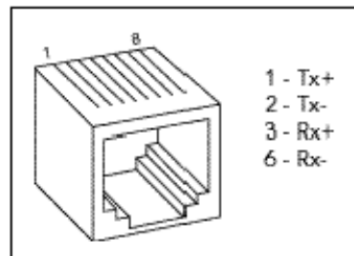
The back panel of the WiBox 2100E contains a 9-30VDC power plug and an RJ45 (10/100) Ethernet port.

Figure 2-8. Network Interface



Ethernet Connector Pinouts

Figure 2-9. RJ45 Ethernet Connector



LEDs

Table 2-1. WiBox 2100E LEDs

LEDs	Meaning
Power LED: Green, steady on	Power is on
Wireless Link LED: Yellow, blinking	Active wireless connection, transmitting/receiving
Wireless Link LED: Yellow, off Port 1 LED flashes (pauses and repeats) 4 times	No active connection, searching for network connection
Ethernet Link LED: Green, steady on	Active network connection.

LEDs	Meaning
Port 1 LED: Green, steady on	Idle
Port 1 LED: Green, blinking	Active TCP connection
Port 2 LED: Yellow, steady on	Idle
Port 2 LED: Yellow, blinking	Active TCP connection

Technical Specifications

Table 2-2. WiBox 2100E Technical Specifications

CPU, Memory	Lantronix® DSTni® EX embedded device server 186 CPU 256 KB zero wait state SRAM 2048 KB Flash
Serial Interface	Rate is software selectable (300 bps to 921600 bps)
Network Interface	Wireless 802.11b/g 10/100 RJ45 Ethernet (WiBox 2100E only)
Power Supply	External adapter included 120 VAC (1-01 models) USA 100 – 240 VAC (2-01 models) Universal with regional connectors
Power Input	9 – 30 VDC (2.5 W maximum) DC input
Dimensions	Height: 2.3 cm (0.9 in) Width: 7.3 cm (2.87 in) Depth: 9.5 cm (3.74 in)
Weight	0.28 kg (0.62 lbs)
Temperature	Operating temperature range: -40°C to 70°C (-40°F to 158°F). Storage temperature range: -40°C to 85°C (-40°F to 185°F)
Relative Humidity	Operating: 10% to 90% non-condensing, 40% to 60% recommended Storage: 10% to 90% non-condensing

3: Getting Started

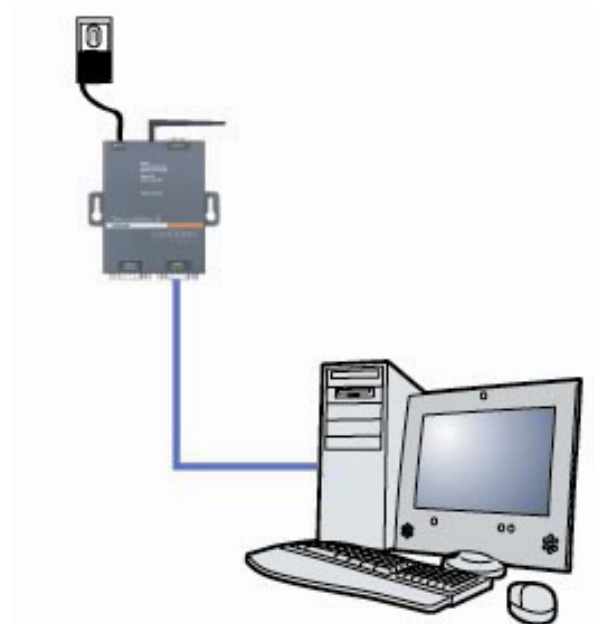
This chapter describes the procedure for getting your WiBox 2100E device server up and running.

Installing the WiBox 2100E

Note: For diagrams of the mounting brackets, see [A: Mounting Brackets](#).

Complete the following steps to connect and initially configure the WiBox 2100E. Initial configuration is done using the Setup Mode's Change Setup menu.

Figure 3-1. WiBox 2100E Connected for Configuration



1. Connect one end of the supplied DB9F – DB9F null modem serial cable to the WiBox 2100E's serial port 1.
2. Connect the other end of the DB9 serial cable to a terminal or a PC's serial COM port.
3. On the PC, open a terminal emulation application (e.g. HyperTerminal). The default serial settings are 9600 baud, 8 bits, not parity, 1 stop bit, and no flow control (9600, 8, N, 1).
4. Enter Setup Mode by simultaneously connecting the power supply and holding down the x key. Upon connection, the following information displays:

```
MAC address 00204A8178A4
Software version V6.7.0.0 (100118)

Press Enter for Setup Mode
```

5. Press **Enter** within 5 seconds to display the **Change Setup** menu.

Current settings display in parentheses.

Configuring the WiBox 2100E

Two settings are required for the WiBox 2100E to communicate on a wireless network:

- ◆ The Server (0) settings
- ◆ The WLAN (4) settings

Note: Due to regulations, the country-specific setting has been removed from the setup menu and Web Manager. We provide a separate utility for changing the **Country/Zone** setting. The utility is called *SetZone* and is included in the WiBox 2100E package. It is also available for download from the Lantronix web site.

The syntax is `SetZone <IP address> [<zone abbreviation>]`

Leaving the zone blank causes the utility to report the current setting only. Following are valid zone abbreviations. These settings are consistent with IEEE802.11b/g zones:

US=United States

CA=Canada

FR=France

SP=Spain

JP=Japan

**OT=Others, such as Europe
(excluding France), Asia, Africa,
and Australia**

1. To configure the Server settings, select **0** from the **Change Setup** menu and edit the following fields:

Network Mode: Select the network mode for the WiBox 2100E. Options available are **Wired Only**, **Wireless Only**, and **Bridging**. (For more information on bridging, see [11: Wireless Bridging](#).)

Note: The bridging option is available in firmware version 6.2 and later.

```
Network Mode <0=Wired Only 1=Wireless Only 2=Bridging<One Host> >:
```

IP Address: The IP address must be set to a unique value in the network. Enter each octet and press Enter between each section.

```
IP Address: IP Address : ( 0 ) ( 0 ) ( 0 ) ( 0 ) _
```

Set Gateway IP Address: The gateway address should be the IP address of the router connected to the same LAN segment as the WiBox 2100E unit.

```
Set Gateway IP Address (N) ? Y
Gateway IP addr ( 0 ) ( 0 ) ( 0 ) ( 0 ) _
```

Netmask: A netmask defines the number of bits taken from the IP address that are assigned for the host part.

```
Netmask: Number of Bits for Host Part (0=default)(0) _
```

Set DNS Server IP Address: The DNS server allows the name of a remote machine to be resolved automatically. The default is **N** (No), indicating the DNS server address has not been set. To set the DNS server address, type **Y**. At the prompt, enter the DNS server address. If the device is DHCP enabled, the DHCP server provides the DNS server IP address, which will override this configured value.

Note: This setting is applicable only in Manual Connection mode.

```
Set DNS Server IP addr <N> ?
```

Change Telnet/Web Manager Password: Change the Telnet configuration password to prevent unauthorized access to the Change Setup menu and Web Manager.

```
Change Telnet/Web Manager password (N) ? _
```

Change DHCP Device Name: Change the DHCP name if the network is DHCP-enabled.

Case 1:

```
Change DHCP device name (not set) ? (N) Y
Enter new DHCP device Name :
Enable DHCP FQDN option : (N) ?
```

Case 2:

```
Change DHCP device name (not set) ? (N) N
Enable DHCP FQDN option : (N) ?
```

- To modify WLAN settings, select **4 WLAN** from the Change Setup menu and edit the following fields:

Topology: Select Infrastructure (ESS) mode or AdHoc (IBSS). Infrastructure mode communicates with Access Points. Ad Hoc mode communicates only with other clients.

```
Topology 0=Infrastructure, 1=AdHoc (0) ?
```

Network Name (SSID): Enter the name of the network to which the WiBox 2100E will connect.

```
Network name (SSID) (LTRX_IBSS) ? _
```

Ad Hoc Network Channel: When Ad Hoc mode is selected, and the WiBox 2100E cannot find the specified network, it creates one with that name by transmitting a beacon on the selected channel.

```
Channel (11) ?
```

Only channels allowed in the country for which the WiBox 2100E is designated can be selected. The country displays in the Setup Mode settings overview.

Security Suite: The WiBox 2100E features WEP, WPA, and WPA2/802.11i to secure all wireless communication. WPA and WPA2/802.11i are not available when **Adhoc** is selected as the topology.

```
Security 0=none, 1=WEP, 2=WPA, 3=WPA2/802.11i (0) ? _
```

WEP:

```
Security suite: 0=none, 1=WEP, 2=WPA, 3=WPA2/802.11i (1) ? 1
Authentication: 0=open/none, 1=shared (1) ?
Encryption: 1=WEP64, 2=WEP128 (2) ?
Change Key (N) ? Y
Display key (N) ?
Key type 0=hex, 1=passphrase (0) ?
Enter Key: **-*-*-*-*-*-*-*-*-*-*-*-*-*-*-*-*
TX Key index (1) ? 1
TX Data rate: 0=fixed, 1=auto fallback (1) ?
```

Property	Description
Authentication	Select whether the encryption keys are matched (1 = shared) with those of the

Property	Description
	communication partner before passing through messages or not (2 = open/none).
Encryption	Length of the encryption key and the security strength. WEP64 uses a 40 bits/5 bytes key (option 1). WEP128 uses a 104 bits/13 bytes key (option 2).
Change key	Select (Y) Yes to modify the currently configured key.
Display Key	Select (Y) Yes to show the currently configured key/passphrase
Key type	Indicate whether the new key is in hexadecimal or passphrase format.
Enter key	<p>Enter the new encryption key. The passphrase input is not the same as ASCII input (as used on some products). ASCII is translated directly into hexadecimal bytes according to the ASCII table. The WiBox 2100E passphrase is hashed using the Neesus Datacom algorithm (for WEP64) or MD5 (for WEP128).</p> <p>The passphrase input is safer because it is up to 63 chars long. ASCII input is a maximum of 5 (WEP64) or 13 (WEP128) characters long and limits the number of key combinations.</p> <p>Please refer to the other equipment's manual to determine the passphrase input style recommended.</p> <p>Note: Lantronix recommends using a passphrase of 20 characters or more for maximum security.</p>
TX Key index	Select the WEP key used for transmissions. Enter a value from 1 to 4.
TX Data rate	Select the Data Transmit rate. The value are 1 MB, 2 MB, 5.5 MB, 11 MB, 18 MB, 24 MB, 36 MB, and 54 MB.

WPA: This firmware version allows only Pre-Shared Keys (PSK) for authentication and encryption. **Topology** must be set to Infrastructure for the WPA option to display.

```
Security suite: 0=none, 1=WEP, 2=WPA, 3=WPA2/802.11i (0) ? 2
Change key (N) ? Y
Display key (N) ?
Key type 0=hex, 1=passphrase (1) ? 1
Enter key: *****
Encryption: 0=TKIP, 1=TKIP+WEP (0) ?
```

Property	Description
Change key	Select (Y) (Yes) to modify the currently configured key.
Display key	Select (Y) Yes at the prompt to show the currently configured key/passphrase
Key type	Indicate whether the new key is in hexadecimal or passphrase format.
Enter key	<p>Enter the passphrase. The maximum length is 63 characters.</p> <p>Note: Lantronix recommends using a passphrase of 20 characters or more for maximum security.</p>
Encryption	Set the type to the minimum required security level. The "+" sign indicates that the group (broadcast) encryption method is different from the pairwise (unicast) encryption (WEP and TKIP).

802.11i/WPA2-Personal :

```

Security suite: 0=none, 1=WEP, 2=WPA, 3=WPA2/802.11i (0) ? 3
Change key (N) ? Y
Display key (N) ?
Key type 0=hex, 1=passphrase (1) ?
Enter key: *****
Encryption: 0=CCMP, 1=CCMP+TKIP, 2=CCMP+WEP, 3=TKIP, 4=TKIP+WEP (3) ?

```

Property	Description
Change key	Select (Y) Yes to modify the currently configured key.
Display key	Select (Y) Yes to show the currently configured key/passphrase.
Key type	Indicate whether the new key is in hexadecimal or passphrase format.
Enter key	Enter the passphrase. The maximum length is 63 characters. Lantronix recommends using a passphrase of 20 characters or more for maximum security.
Encryption	Set the type to the minimum required security level. The "+" sign indicates that the group (broadcast) encryption method is different from the pairwise (unicast) encryption. For example, for CCMP+TKIP, CCMP is the pairwise encryption and TKIP is the group encryption. CCMP is the default for WPA2.

Minimum TX Data Rate: Selects the minimum data rate the device will use when auto-fallback is enabled. The default is **1 Mbps** (menu option 7).

Max TX Fails: Determines the maximum number of consecutive transmit packet failures before the device will drop its association with the AP and attempt to establish a new one. The range of attempts is 6 to 64 with 255 equaling disabled. The default is **6** failed attempts.

- Upon completing the IP and WLAN settings, select menu option **9** to save and exit the WiBox 2100E Setup Mode.
- To further configure the WiBox 2100E, continue to [4: Web Manager Configuration](#) or [5: Telnet or Serial Port \(Setup Mode\) Configuration](#).

Installing DeviceInstaller

Use DeviceInstaller utility to configure the IP address and other network parameters when a wireless connection is established between the WiBox and a laptop or desktop equipped with a wireless card.

Note: You will need a Windows PC running Lantronix DeviceInstaller 4.2 or higher.

- Download the latest version of DeviceInstaller from www.lantronix.com/downloads.
- Run the executable to start the installation process.
- Respond to the installation wizard prompts. (If prompted to select an installation type, select Typical.)

Note: For more information about DeviceInstaller, see the DeviceInstaller Online Help.

Viewing the Current Configuration

After locating the WiBox 2100E as described in DeviceInstaller Help, you can view its current configuration.

To view the WiBox 2100E's configuration settings:

In the right window, click the **Device Details** tab. The current WiBox 2100E configuration displays:

Property	Description
Name	A name to identify the WiBox 2100E. Double-click the field, type the value, and press Enter to complete. This name is not visible on other PCs or laptops using DeviceInstaller.
DHCP Device Name	A name the WiBox 2100E device server will send to the DHCP server if it is configured to obtain an address in this manner.
Group	A group to categorize the WiBox 2100E. Double-click the field, type the value, and press Enter to complete. This group name is not visible on other PCs or laptops using DeviceInstaller.
Comments	Comments about the WiBox 2100E. Double-click the field, type the value, and press Enter to complete. This description or comment is not visible on other PCs or laptops using DeviceInstaller.
Device Family	Displays the WiBox 2100E's device family type as Wireless.
Type	Displays the device type as WiBox b/g.
ID	Displays the WiBox 2100E's ID embedded within the box.
Hardware Address	Displays the WiBox 2100E's hardware (or MAC) address.
Firmware Version	Displays the firmware currently installed on the WiBox 2100E.
Extended Firmware Version	Displays the firmware currently installed on the WiBox 2100E.
Online Status	Displays the WiBox 2100E's status as online, offline, unreachable (the WiBox 2100E is on a different subnet), or busy (the WiBox 2100E is currently performing a task).
IP Address	Non-configurable field. Displays the WiBox 2100E's current IP address. To change the IP address, see 4: Web Manager Configuration or 5: Telnet or Serial Port (Setup Mode) Configuration .
IP Address was Obtained	Displays "Dynamically" if the device automatically received an IP address (e.g., from DHCP). Displays "Statically" if the IP address was configured manually. If the IP address was assigned dynamically, the following fields appear: <ul style="list-style-type: none"> ◆ Obtain via DHCP with value of True or False. ◆ Obtain via BOOTP with value of True or False. ◆ Obtain via RARP with value of True or False ◆ Obtain via Auto IP with value of True or False
Subnet Mask	Non-configurable field. Displays the WiBox 2100E's current subnet mask. To change the subnet mask, see 4: Web Manager Configuration or 5: Telnet or Serial Port (Setup Mode) Configuration .

Property	Description
Gateway	Non-configurable field. Displays the WiBox 2100E's current gateway. To change the gateway, see 4: Web Manager Configuration or 5: Telnet or Serial Port (Setup Mode) Configuration .
Number of COB partitions supported	Non-configurable field. Displays the number of COB partitions supported (between 19 and 51).
Number of Serial Ports	Non-configurable field. Displays the number of ports on the WiBox 2100E.
TCP Keepalive	Non-configurable field. Displays 1-65s , the WiBox 2100E's TCP keepalive range.
Telnet Supported	Non-configurable field. Displays True if the WiBox 2100E can be accessed by using Telnet.
Telnet Port	Non-configurable field. Displays the WiBox 2100E's port for Telnet sessions.
Web Port	Non-configurable field. Displays the WiBox 2100E's port for Web Manager configuration.
Maximum Baud Rate Supported	Non-configurable field. Displays the WiBox 2100E's maximum baud rate. Note: the WiBox 2100E may not currently be running at this rate.
Firmware Upgradeable	Non-configurable field. Displays True , indicating the WiBox 2100E's firmware is upgradeable as newer version become available.
Supports Configurable Pins	Non-configurable field. Displays False , indicating configurable pins are not available on the WiBox 2100E.
Supports Email Triggers	Non-configurable field. Displays False , indicating email triggers are not available on the WiBox 2100E.
Supports AES Data Stream	Non-configurable field. Displays True if the WiBox 2100E unit supports AES encryption.
Supports 485	Non-configurable field. WiBox 2100E supports the RS-485 protocol.
Supports 921K Baud Rate	Non-configurable field. WiBox 2100E supports baud rates up to 920K.
Supports Wired Ethernet	Non-configurable field. WiBox 2100E supports wired Ethernet.
Supports HTTP Server	Non-configurable field. Displays True .
Supports HTTP Setup	Non-configurable field. WiBox 2100E supports HTTP setup.
Supports 230K Baudrate	Non-configurable field. WiBox 2100E supports a baud rate of 230K.
Supports GPIO	Non-configurable field. Displays False .

4: Web Manager Configuration

This chapter describes how to configure the WiBox 2100E device server using the Lantronix Web Manager browser-based configuration tool. The unit's configuration is stored in nonvolatile memory and is retained without power. The unit performs a reset after the configuration is changed and stored.

Accessing Web Manager through a Web Browser

1. Open a standard web browser. Lantronix supports the latest versions of Internet Explorer, Mozilla Firefox, Safari, Opera and Chrome web browsers.
2. In the address bar, enter the WiBox 2100E IP address or host DHCP name as listed below:
 - a) `http://xxx.xxx.xxx.xxx` (where `xxx.xxx.xxx.xxx` is the IP address assigned to the WiBox 2100E unit).
 - b) `http://my_WiBox 2100E` (where "my_WiBox 2100E" is the name assigned to the WiBox 2100E unit if DHCP is enabled).
 - c) `Cxxxxxx` (where `xxxxxxx` is the last 6 digits of the unit's MAC address on DHCP-enabled networks).
3. Press **Enter**. The WiBox 2100E Web Manager opens in a browser window.

A user and password dialog box displays. By default, no user and password are configured. Press **OK**.

Figure 4-1. Web Manager



The main menu is on the left panel of the Web Manager window.

Network Configuration

Select **Network** from the main menu to display the unit's network values. The following sections describe the configurable network parameters.

Note: If the IP address is assigned via DHCP, its DHCP settings do not display.

Figure 4-2. Network Settings

The screenshot shows the LANTRONIX Web Manager interface. At the top, the LANTRONIX logo is on the left, and the Firmware Version (V6.8.0.4) and MAC Address (00-20-4A-89-79-44) are on the right. The sidebar menu on the left includes: Network (selected), Server, Serial Tunnel (Hostlist), Channel 1 (Serial Settings, Connection), Channel 2 (Serial Settings, Connection), WLAN, Apply Settings, and Apply Defaults. The main content area is titled 'Network Settings' and contains the following configuration options:

- Network Mode:** A dropdown menu set to 'Wireless Only'.
- IP Configuration:**
 - Obtain IP address automatically
 - Auto Configuration Methods:**
 - BOOTP: Enable Disable
 - DHCP: Enable Disable
 - AutoIP: Enable Disable
 - DHCP Host Name:
 - Use the following IP configuration:
 - IP Address:
 - Subnet Mask:
 - Default Gateway:
 - DNS Server:
- Ethernet Configuration:**
 - Auto Negotiate
 - Speed: 100 Mbps 10 Mbps
 - Duplex: Full Half

An 'OK' button is located at the bottom of the configuration area.

Network Mode Configuration

To determine the unit's network mode:

1. Click **Network** from the main menu.
2. Modify the following:

Network Mode	Select Wireless Only to enable only the wireless network connectivity for the WiBox 2100E. Select Wired Only to enable only the Ethernet network connectivity. Select Bridging (Single Host) to enable bridging on the WiBox 2100E (for more information on bridging, see 11: Wireless Bridging).
---------------------	---

Automatic IP Address Configuration

To assign an IP address and its network configuration automatically:

1. Click **Network** from the main menu.
2. Select **Obtain IP address automatically**.
3. Enter the following (as necessary):

BOOTP	Enable permits the Bootstrap Protocol (BOOTP). The BOOTP server assigns the IP address automatically from a pool of addresses.
DHCP	Enable permits Dynamic Host Configuration Protocol (DHCP). DHCP to assign a leased IP address to the WiBox 2100E unit automatically.
AutoIP	Enable permits the WiBox 2100E to generate an IP in the 169.254.x.x address range with a Class B subnet.
DHCP Host Name	Enter the name of the host on the network providing the IP address.

Note: Consult the System or Network Administrator before adjusting these settings. Disabling all three methods is not advised as the only available IP assignment method will then be ARP or serial port.

4. Click the **OK** button when finished.
5. On the main menu, click **Apply Settings**.

Static IP Address Configuration

To assign an IP address and its network configuration manually:

1. Click **Network** from the main menu.
2. Select **Use the following IP configuration**.
3. Enter the following (as necessary):

IP Address	If DHCP is not used to assign IP addresses, enter it manually. The IP address must be set to a unique value in the network.
Subnet Mask	A subnet mask defines the number of bits taken from the IP address that are assigned for the host part.
Default Gateway	The gateway address, or router, allows communication to other LAN segments. The gateway address should be the IP address of the router connected to the same LAN segment as the WiBox 2100E. The gateway address must be within the local network.
DNS Server	The DNS server allows the name of a remote machine to be resolved automatically. Enter the IP address of the DNS server. If the device is DHCP enabled, the DHCP server provides the DNS server IP address, which will override this configured value. Note: This setting is applicable only in Manual Connection mode.

4. Click the **OK** button when finished.
5. On the main menu, click **Apply Settings**.

Ethernet Configuration

You must specify the speed and direction of data transmission.

To specify how data will be transmitted:

1. On the main menu, click **Network**.
2. Enter the following (as necessary):

Auto Negotiate	With this option, the Ethernet port auto-negotiates the speed and duplex with the hardware endpoint to which it is connected. This is the default setting. If this option is not selected, complete the Speed and Duplex fields that become available.
Speed	The speed of data transmission. The default setting is 100 Mbps .
Duplex	The direction of data transmission. The default setting is Full .

3. When you are finished, click the **OK** button.
4. On the main menu, click **Apply Settings**.

Server Configuration

The unit's server values display upon selecting **Server** from the main menu. The following sections describe the configurable parameters within the Server configuration menu.

Figure 4-3. Server Settings

Note: Ethernet configuration is not available in Wireless Only mode.

To configure the WiBox 2100E's device server settings:

1. Click **Server** from the main menu.
2. Configure or modify the following fields:

Server Configuration

Enhanced Password	Select whether to enable enhanced password: <ul style="list-style-type: none"> ◆ Enable: selecting this option enables advanced password creation, allowing you to create passwords up to 16 bytes in length. ◆ Disable: selecting this option disables advanced password creation, allowing you to create basic passwords up to 4 bytes in length.
Telnet/Web Manager Password	Enter the password required for Telnet configuration and Web Manager access.
Retype Password	Re-enter the password required for Telnet configuration and Web Manager access.

Advanced

ARP Cache Timeout (secs)	When the unit communicates with another device on the network, it adds an entry into its ARP table. ARP Cache timeout defines the number of seconds (1-600) before it refreshes this table.
TCP Keepalive (secs)	TCP Keepalive time defines how many seconds the unit waits during an inactive connection before checking its status. If the unit does not receive a response, it drops that connection. Enter a value between 1 and 65 seconds. 0 disables keepalive. The default setting is 45 .
Monitor Mode @ Bootup	Select Disable to disable the entry into the monitor mode via the yyy or xx1 key sequence at startup. This command prevents the unit from entering monitor mode by interpreting the stream of characters that are received during the device server's initialization at startup.
CPU Performance Mode	Select the WiBox 2100E's performance mode. Higher performance settings require more energy. Low is 26 Mhz. Regular is 48 Mhz; High is 88 Mhz. The default is Regular .
HTTP Server Port	This option allows the configuration of the web server port number. The valid range is 1-65535. The default HTTP server port number is 80 .
Config Server Port	Allows for the configuration of the 0x77FE server port number. Enter a number between 1 and 65535. The 0x77FE port is used in Bridging mode to discover Lantronix device servers behind a bridge. The default 0x77FE server port number is 30718 . See 11: Wireless Bridging for more information.
MTU Size	The Maximum Transmission Unit (MTU) is the largest physical packet size a network can transmit for TCP and UDP. Enter between 512 and 1400 bytes. The default setting is 1400 bytes.
TCP Re-transmission timeout (ms)	The desired TCP re-transmission timeout value. If the ACK is not received for a packet sent from the WiBox device, then the unit will retransmit the data. The valid range is 500-4000 msec.

- When you are finished, click the **OK** button.
- On the main menu, click **Apply Settings**.

Hostlist Configuration

The WiBox 2100E scrolls through the hostlist until it connects to a device listed in the hostlist table. After a successful connection, the unit stops trying to connect to any others. If this connection fails, the unit continues to scroll through the table in sequence until the next successful connection.

The hostlist supports a minimum of 1 and a maximum of 12 entries. Each entry contains an IP address and a port number.

Note: The hostlist is disabled for Manual and Modem Mode. The unit will not accept a data connection from a remote device when the hostlist option is enabled.

Figure 4-4. Hostlist Settings

LANTRONIX® Firmware Version: V6.8.0.4
MAC Address: 00-20-4A-89-79-44

Hostlist Settings

Retry Settings
 Retry Counter: Retry Timeout:

Host Information

No.	Host Address	Port	No.	Host Address	Port
1	<input type="text" value="0.0.0.0"/>	<input type="text" value="0"/>	2	<input type="text" value="0.0.0.0"/>	<input type="text" value="0"/>
3	<input type="text" value="0.0.0.0"/>	<input type="text" value="0"/>	4	<input type="text" value="0.0.0.0"/>	<input type="text" value="0"/>
5	<input type="text" value="0.0.0.0"/>	<input type="text" value="0"/>	6	<input type="text" value="0.0.0.0"/>	<input type="text" value="0"/>
7	<input type="text" value="0.0.0.0"/>	<input type="text" value="0"/>	8	<input type="text" value="0.0.0.0"/>	<input type="text" value="0"/>
9	<input type="text" value="0.0.0.0"/>	<input type="text" value="0"/>	10	<input type="text" value="0.0.0.0"/>	<input type="text" value="0"/>
11	<input type="text" value="0.0.0.0"/>	<input type="text" value="0"/>	12	<input type="text" value="0.0.0.0"/>	<input type="text" value="0"/>

To configure the WiBox 2100E's hostlist:

1. From the main menu, click the **Hostlist** tab.
2. Enter or modify the following fields from the Hostlist Settings window:

Retry Settings

Retry Counter	Enter the value for the number of times the WiBox 2100E should attempt to retry connecting to the hostlist. The default setting is 3 .
Retry Timeout	Enter the duration (in milliseconds) the WiBox 2100E should abandon attempting a connection to the hostlist. The default setting is 250 .

Host Information

Host Address	Enter or modify the host's IP address.
Port	Enter the target port number.

3. When you are finished, click the **OK** button.
4. On the main menu, click **Apply Settings**.

Channel 1 and Channel 2 Configuration

Channel 1 and Channel 2 configurations define how the serial ports respond to network and serial communication.

Serial Settings

To configure a channel's serial settings:

1. From the main menu, click **Serial Settings** for either Channel 1 or Channel 2 to display the Serial Settings page for the selected channel.

Figure 4-5. Channel Serial Settings

The screenshot displays the LANTRONIX Web Manager interface for configuring serial settings on Channel 1. The top header shows the LANTRONIX logo, Firmware Version: V6.8.0.4, and MAC Address: 00-20-4A-89-79-44. The left sidebar contains a navigation menu with options like Network, Server, Serial Tunnel, Channel 1, Channel 2, WLAN, and Apply Settings. The main content area is titled 'Serial Settings' and includes the following sections:

- Channel 1**: A checkbox for 'Disable Serial Port'.
- Port Settings**: Fields for Protocol (RS232), Baud Rate (9600), Data Bits (8), Parity (None), Stop Bits (1), and Flow Control (None).
- Pack Control**: A checkbox for 'Enable Packing', Idle Gap Time (12 msec), Match 2 Byte Sequence (Yes/No), Match Bytes (Hex), Send Frame Immediate (Yes/No), and Send Trailing Bytes (None/One/Two).
- Flush Mode**: Two columns of settings for 'Flush Input Buffer' and 'Flush Output Buffer', each with 'With Active Connect', 'With Passive Connect', and 'At Time of Disconnect' options (Yes/No).

An 'OK' button is located at the bottom of the configuration area.

2. In the available fields, enter the following information:

Channel

Disable Serial Port	Available on Channel 2 settings only. When selected, disables communication through the serial port. Note: Using a telnet session you may enter a baud rate of 00 in channel settings to disable the serial port.
----------------------------	---

Port Settings

Protocol	Select the protocol type from the pull-down menu for the selected channel. Available options are RS232, RS422/RS485 – 4 wire mode, and RS485 - 2 wire mode. Note: RS422/RS485 – 4 wire mode and RS485 - 2 wire mode apply to Channel 2 only.
-----------------	--

Flow Control	Flow control manages data flow between devices in a network to ensure it is processed efficiently. Too much data arriving before a device is prepared to manage it causes lost or retransmitted data. The default setting is None .
Baud Rate	The unit and attached serial device, such as a modem, must agree on a speed or baud rate to use for the serial connection. Valid baud rates are 300, 600, 1200, 2400, 4800, 9600 (default), 19200, 38400, 57600, 115200, or 230400. For baud rates 460 and 921 Kbps, the CPU Performance Mode must be set to High .
Data Bits	Indicates the number of character bits. The default setting is 8 .
Parity	Checks for the parity bit. The default setting is None .
Stop Bits	The stop bit follows the data and parity bits in serial communication. It indicates the end of transmission. The default setting is 1 .

Pack Control

Enable Packing	Select the checkbox to enable packing on the WiBox 2100E. Two firmware-selectable packing algorithms define how and when packets are sent to the network. The standard algorithm is optimized for applications in which the unit is used in a local environment, allowing for very small delays for single characters, while keeping the packet count low. The alternate packing algorithm minimizes the packet count on the network and is especially useful in applications in a routed Wide Area Network (WAN). Adjusting parameters in this mode can economize the network data stream. Disabled by default.
Idle Gap Time	Select the maximum time for inactivity. The default time is 12 milliseconds.
Match 2 Byte Sequence	Use to indicate the end of a series of data to be sent as one group. The sequence must occur sequentially to indicate the end of data collection to the WiBox 2100E. The default setting is No .
Match Bytes	Use to indicate the end of a series of data to be sent as one group. Set this value to 00 if specific functions are not needed.
Send Frame Immediate	After the detection of the byte sequence, indicates whether to send the data frame or the entire buffer. Select Yes to send only the data frame. The default setting is No .
Send Trailing Bytes	Select the number of bytes to send after the end-of-sequence characters. The default None .

Flush Input Buffer (Serial to Network)

With Active Connect	Select Yes to clear the input buffer with a connection that is initiated from the device to the network. The default setting is No .
With Passive Connect	Select Yes to clear the input buffer with a connection initiated from the network to the device. The default setting is No .

At Time of Disconnect	Select Yes to clear the input buffer when the network connection to or from the device is disconnected. The default setting is No .
------------------------------	---

Flush Output Buffer (Network to Serial)

With Active Connect	Select Yes to clear the output buffer with a connection that is initiated from the device to the network. The default setting is No .
With Passive Connect	Select Yes to clear the output buffer with a connection initiated from the network to the device. The default setting is No .
At Time of Disconnect	Select Yes to clear the output buffer when the network connection to or from the device is disconnected. The default setting is No .

3. When you are finished, click the **OK** button.
4. On the main menu, click **Apply Settings**.

Connection Settings - TCP

To configure a channel's TCP settings:


1. From the main menu, click **Connection** for either Channel 1 or Channel 2 to display the Connection Settings page for the selected channel.
2. In the available fields, enter the following information:

Note: See *Connection Settings - UDP for UDP connections*.

Connect Protocol

Protocol	Select TCP from the pull-down menu.
-----------------	--

Figure 4-6. TCP Connection Settings



Firmware Version: **V6.8.0.4**
 MAC Address: **00-20-4A-89-79-44**

Home

Network

Server

Serial Tunnel

 Hostlist

Channel 1

 Serial Settings

 Connection

Channel 2

 Serial Settings

Connection

WLAN

Apply Settings

Apply Defaults

Connection Settings

Channel 2

Connect Protocol

Protocol: TCP

Connect Mode

Passive Connection:

Accept Incoming: Yes

Password Required: Yes No

Password:

Modem Escape Sequence Pass Through: Yes No

Active Connection:

Active Connect: None

Start Character: 0x00 (in Hex)

Modem Mode: None

Show IP Address After RING: Yes No

Endpoint Configuration:

Local Port: 10002 Auto increment for active connect

Remote Port: 0 Remote Host: 0.0.0.0

Common Options:

Telnet Com Port Cntrl: Disable Connect Response: None

Terminal Name: Use Hostlist: Yes No LED: Blink

Disconnect Mode

On Mdm_Ctrl_In Drop: Yes No Hard Disconnect: Yes No

Check EOT(Ctrl-D): Yes No Inactivity Timeout: 0 : 0 (mins : secs)

OK

Connect Mode: Passive Connection

Accept Incoming	Select Yes to accept incoming connections.
Password Required	Determines whether a password is required for an incoming passive connection. This field is not available when a password is set for Telnet mode. The default setting is No .
Password	If Password Required was set to Yes , enter the password for passive connections.
Modem Escape Sequence Pass Through	Disable or enable the unit's ability to send the escape sequence. The default is Y (Yes) (send the escape sequence).

Connect Mode: Active Connection

Active Connect	Select None (default) to disable Active Connect . Otherwise, indicate the connection type from the drop-down list: <ul style="list-style-type: none"> ♦ With Any Character: Attempts to connect when any character is received from the serial port. ♦ With Active Mdm Ctrl In: Accepts external connection requests only when the Modem Control In input is asserted. ♦ With Start Character: Attempts to connect when it receives a specific start character from the serial port. The default start character is carriage return. ♦ Manual Connection: Attempts to connect when directed by a command string received from the serial port. ♦ Auto Start: Automatically connects to the remote IP address and port after booting up.
Start Character	If Active Connect is set to With Start Character , enter the start character in this field. The default setting is 0D .
Modem Mode	Indicates the on-screen response type when in Modem Mode (if Modem Mode is enabled). The default setting is None .
Show IP Address After Ring	Indicates whether to display the remote IP address upon connection. The default setting is Yes .

Endpoint Configuration

Local Port	Enter the local port number.
Auto increment for active connect	Check the checkbox to auto-increment the local port number for new outgoing connections. The range of auto-incremented port numbers is 50,000 to 59,999 and loops back to the beginning when the maximum range is reached. Disabled by default.
Remote Port	Enter the remote port number.
Remote Host	Enter the IP address of the remote device.

Common Options

Telnet Com Port Cntrl	Available for configuration only when Active Connect is set to None . Select Enable to permit Telnet communication to the WiBox 2100E unit. The Telnet Com Port Cntrl feature is used in conjunction with the Com Port Redirector (CPR) utility. (See the CPR online Help for details.)
Connect Response	A single character is transmitted to the serial port when there is a change in connection state. Default setting is None .
Terminal Name	Available for configuration only when Telnet Com Port Cntrl is set to Enable . Use the terminal name for the Telnet terminal type. Enter only one name. When this option is enabled, the unit also reacts to the end of record (EOR) and binary options, which can be used for applications such as terminal emulation to IBM hosts.
Use Hostlist	If this option is set to Yes , the device server scrolls through the host list until it connects to a device listed in the host list table. Once it

	<p>connects, the unit stops trying to connect to any others. If this connection fails, the unit continues to scroll through the table until it is able to connect to another IP in the host list.</p> <p>The host list is disabled for Manual and Modem Modes. The unit will not accept a data connection from a remote device when the host list option is enabled.</p>
LED	Select Blink for the status LEDs to blink upon connection, or select None for no LED output.

Disconnect Mode

On Mdm_Ctrl_In Drop	Set to Yes for the network connection to or from the serial port to disconnect (drop) when Modem Control In transitions from an asserted state to not asserted state. The default setting is No .
Hard Disconnect	When set to Yes , the TCP connection closes even if the remote site does not acknowledge the disconnect request.
Check EOT (Ctrl+D)	Choose Yes to drop the connection when Ctrl+D or Hex 04 is detected. Both Telnet Com Port Cntrl and Disconnect with EOT must be enabled for Disconnect with EOT to function properly. Ctrl+D is only detected going from the serial port to the network.
Inactivity Timeout	<p>Use this parameter to set an inactivity timeout. The unit drops the TCP connection to port 10001/10002 if there is no activity on the serial line before the set time expires. Enter time in the format mm:ss, where m is the number of minutes and s is the number of seconds. To disable the inactivity timeout, enter 00:00.</p> <p><i>Note: The default port number for Port 1 is 10001 and 10002 for Port 2. However, port numbers may be set to a different value.</i></p>

- When you are finished, click the **OK** button.
- On the main menu, click **Apply Settings**.

Connection Settings - UDP

To configure a channel's UDP settings:

- From the main menu, click **Connection** for either Channel 1 or Channel 2 to display the Connection Settings page for the selected channel.

Connect Protocol

Protocol	Select UDP from the pull-down menu.
-----------------	--

Figure 4-7. UDP Connection Settings

LANTRONIX® Firmware Version: **V6.8.0.4**
MAC Address: **00-20-4A-89-79-44**

Connection Settings

Channel 2

Connect Protocol
Protocol: **UDP**

Datagram Mode:
Datagram Type: **00** Accept Incoming: **Yes**

Endpoint Configuration:
Local Port: **10002** Remote Port: **0**
Remote Host: **0.0.0.0** Use Broadcast

Device Address Table:

No.	Dev Addr	No.	Dev Addr	No.	Dev Addr	No.	Dev Addr
0	<input type="text"/>	1	<input type="text"/>	2	<input type="text"/>	3	<input type="text"/>
4	<input type="text"/>	5	<input type="text"/>	6	<input type="text"/>	7	<input type="text"/>
8	<input type="text"/>	9	<input type="text"/>	10	<input type="text"/>	11	<input type="text"/>
12	<input type="text"/>	13	<input type="text"/>	14	<input type="text"/>	15	<input type="text"/>

OK

2. In the available fields, enter the following information:

Datagram Mode

Datagram Type	Configures remote IP or network broadcast address and the remote port. Enter 01 for directed or broadcast UDP. The default setting is 00 .
Accept Incoming	Select Yes to accept incoming UDP datagrams.

Endpoint Configuration

Local Port	Enter the local port number.
Remote Port	Enter the port number of the remote device.
Remote Host	Enter the IP address of the remote device.
Use Broadcast	Select to broadcast the UDP datagram. Datagrams of type 01 can be sent as a broadcast by enabling this option. The default is not to broadcast. Note: Datagrams are sent as subnet-directed broadcasts.
Device Address Table	Enter values in the range 1-255 to identify units on the local network of device servers. Note: Lantronix Tech Support supports Datagram type 01. Datagram type FD is for OEM use. This table is enabled when Datagram Type is set to FD .

3. When you are finished, click the **OK** button.
4. On the main menu, click **Apply Settings**.

WLAN Configuration

Without adequate protection, a wireless LAN is susceptible to access by unauthorized users.

The WiBox 2100E WLAN Settings menu permits the following actions:

- ◆ Configuration of the wireless network profile available for activation
- ◆ Configuration of the wireless network security settings
- ◆ Configuration of advanced settings such as radio power management

Note: Due to regulations, the country-specific setting has been removed from the setup menu and Web Manager. However, we provide a separate utility for changing the **Country/Zone** setting. The utility is called SetZone and is included in the WiBox 2100E package. It is also available for download from the Lantronix web site.

The syntax is SetZone <IP address> [<zone abbreviation>]

Leaving the zone blank causes the utility to report the current setting only. Following are valid zone abbreviations. These settings are consistent with IEEE802.11b/g zones:

US=United States

CA=Canada

FR=France

SP=Spain

JP=Japan

**OT=Others, such as Europe
(excluding France), Asia, Africa,
and Australia**

To configure the WiBox 2100E's WLAN settings:

1. Select **WLAN** from the main menu to open the WLAN Settings window.

Figure 4-8. WLAN Settings

LANTRONIX[®] Firmware Version: **V6.8.0.4**
MAC Address: **00-20-4A-89-79-44**

WLAN Settings

Wireless Network Configuration

Network Name (SSID):

Network Type: Infrastructure Ad Hoc

Channel: United States

Wireless Network Security

Security:

Authentication:

Encryption:

Key Type: Hex Passphrase

Key:

Retype Key:

Advanced Settings

TX Data rate: Auto fallback

Min TX Data rate:

Max TX Failures:

Radio Power Management: Enable Disable

AP Roaming: Enable Disable

2. Enter or modify the following fields:

Wireless Network Configuration

Network Name	Enter the name of the wireless network (SSID). The WiBox 2100E connects to this wireless network.
Network Type	Select Infrastructure or Ad Hoc.
Channel	Configurable only when Network Type is Ad Hoc . Select from the pull-down menu the radio channel for the Ad Hoc network. The default value is 11 .

Wireless Network Security

Security	As a security measure, enable WEP , WPA , or 802.11i/WPA2-Personal on the WiBox 2100E. By default, wireless security is disabled on WiBox 2100E.
-----------------	---

WEP Options

Authentication	Select an authentication scheme (Open/None or Shared) from the drop-down list.
Encryption	Select the encryption type (64 bits or 128 bits for WEP) from the drop-down list. 64 bits is the default encryption for WEP.
Key Type	Select the key type (Hex or Passphrase).
Key and Retype Key	Enter the Encryption Key in hexadecimal value if Hex is selected as the key type. Enter key as a string if Passphrase is selected as the key type. Passphrase input is not the same as ASCII input. A passphrase of more than 20 characters is recommended for adequate security. Spaces and punctuation are permitted.
TX Key	Select the key to use for transmission.

WPA Options

Authentication	Select Pre-Shared Keys from the drop-down list.
Encryption	Select the encryption type from the drop-down list. TKIP is the default encryption for WPA.
Key Type	Select the key type (Hex or Passphrase).
Key and Retype Key	Enter the Encryption Key in hexadecimal value if the key type is Hex . Enter key as a string if the key type is Passphrase . Passphrase input is not the same as ASCII input. A passphrase of more than 20 characters is recommended. Spaces and punctuation characters are permitted.

802.11i/WPA2-Personal Options

Authentication	Select Pre-Shared Keys from the drop-down list.
Encryption	Select the encryption type from the drop-down list. CCMP is the default encryption for WPA2.
Key Type	Select the key type (Hex or Passphrase).
Key and Retype Key	Enter the Encryption Key in hexadecimal value if the key type is Hex . Enter the key as a string if the key type is Passphrase . Passphrase input is not the same as ASCII input. A passphrase of more than 20 characters is recommended. Spaces and punctuation characters are permitted.

Advanced Settings

TX Data Rate	<p>WiBox 2100E permits the control of the transmission data rate. Click the Auto fallback check box to allow the WiBox 2100E to set the data rate automatically (or leave unchecked to set the transmission rate manually). The default rate is 54 Mbps.</p> <ul style="list-style-type: none"> ◆ If the Auto fallback check box is selected, choose the maximum data rate from the drop-down list. ◆ If the Auto fallback check box was not selected, select the fixed data rate (in Mbps) from the drop-down list.
Min TX Data Rate	Selects the minimum data rate the device will use when auto-fallback is enabled. The default is 1 Mbps .

	<p>Note: If Auto Rate Fallback is enabled and a minimum TX data rate other than 1Mbps is configured, the radio will operate in Single Rate Drop mode. This means that if a rate drop becomes necessary, the radio will drop from the maximum rate to the lowest rate, ignoring all rates in between. This reduces the potential number of packet retransmission attempts, because the radio attempts to transmit a packet three times before transitioning to the next lowest TX rate.</p>
Max TX Failures	Determines the maximum number of consecutive transmit packet failures before the device will drop its association with the AP and attempt to establish a new one. The range of attempts is 6 to 64 with 255 equaling disabled. The default is 6 failed attempts.
Radio Power Management	Power management reduces the overall power consumption of the WiBox 2100E unit. Selecting Enable increases the response time. Power management is not permitted in Ad-Hoc mode.
AP Roaming	<p>SmartRoam technology takes a proactive approach in transfer ring connectivity from one AP to another AP belonging to the same ESS (having the same SSID or Network Name).</p> <p>If enabled, SmartRoam manages the dynamic list of APs belonging to the same network as the AP to which the WiBox 2100E is currently associated and stores relevant selection criteria for this list. The WiBox 2100E uses these criteria to identify a candidate AP. If the candidate AP is not the current one, the WiBox 2100E dissociates from the current one and associates to the candidate.</p> <p>The roaming technology also triggers candidate selection if the WiBox 2100E reaches the boundaries of good signal coverage for the current AP instead of waiting until signal quality degrades substantially.</p>

3. When you are finished, click the **OK** button.
4. On the main menu, click **Apply Settings**.

Updating Settings

1. Click **Apply Settings** on the main menu to save and apply the configuration changes.

Note: Clicking **OK** on each page does not change the configuration on the device. Clicking the **OK** button tells the WiBox what changes to use; the **Apply Settings** button makes the changes permanent and reboots the WiBox 2100E.

Applying Defaults

1. Click the **Apply Defaults** button to reset the unit's settings to the factory defaults, except for the network IP address, gateway, netmask, and WLAN settings. For a complete list of the default settings, see [Default Settings](#).
2. Click **Yes** to confirm application of factory settings or click **No** to cancel.

5: Telnet or Serial Port (Setup Mode) Configuration

You must configure the unit so that it can communicate on a network with your serial device. As an alternative to using a web browser, as described in the previous chapter, you can use the following procedures remotely or locally:

- ◆ Use a Telnet connection to configure the unit over the network.
- ◆ Use a terminal or terminal emulation program to access the serial port locally.

The series of prompts at which you enter configuration settings is called **Setup Mode**.

Note: Detailed information about other setup methods is available from your Lantronix Sales Associate.

The unit's configuration is stored in nonvolatile memory and is retained without power. You can change the configuration at any time. The unit performs a reset after the configuration has been changed and stored.

This chapter tells you how to access Setup Mode and the general procedure for using it. To complete the configuration, continue with [6: Setup Mode: Server Configuration](#) and [7: Setup Mode: Channel Configuration](#).

Note: The menus in the configuration chapters show a typical device. Your device may have different configuration options.

Accessing Setup Mode

Telnet Connection

To configure the unit over the network, establish a Telnet connection to port **9999**.

Note: You can also use *DeviceInstaller* to access Telnet. Select the device from the main window list, and click the **Telnet Configuration** tab. Skip to step 3, below.

To establish a Telnet connection:

1. From the Windows **Start** menu, click **Run** and type the following command, where x.x.x.x is the IP address, and 9999 is the unit's fixed network configuration port number:

```
telnet x.x.x.x 9999
```

2. Click the **OK** button. The following information displays.

Figure 5-1. MAC Address

```
*** Lantronix WiBox Device Server ***
MAC address 00204A897344
Software version V6.8.0.4 (130110)
AES library version 1.8.2.1

Press Enter for Setup Mode
```

3. To enter Setup Mode, **press Enter within 5 seconds**. The current configuration settings display, followed by the Change Setup menu.

Figure 5-2. Setup Menu Options

```

Change Setup:
 0 Server
 1 Channel 1
 2 Channel 2
 4 WLAN
 5 Expert
 6 Security
 7 Defaults
 8 Exit without save
 9 Save and exit
                                Your choice ?

```

4. Select an option on the menu by entering the number of the option in the **Your choice ?** field and pressing **Enter**.
5. To enter a value for a parameter, type the value and press **Enter**, or to confirm a current value, just press **Enter**.
6. When you are finished, save the new configuration (option 9). The unit reboots.

Serial Port Connection

To configure the unit through a serial connection:

1. Connect a console terminal or PC running a terminal emulation program to your unit's serial port. The default serial port settings are **9600 baud, 8 bits, no parity, 1-stop bit, no-flow control**.
2. Reset the WiBox 2100E device server by cycling the unit's power (turning the power off and back on). Immediately upon resetting the device, enter three lowercase **x** characters (**xxx**).

Note: The easiest way to enter Setup Mode is to hold down the **x** key at the terminal (or emulation) while resetting the unit. **You must do this within three seconds of resetting the WiBox 2100E.**

At this point, the screen display is the same as when you use a Telnet connection. To continue, go to step 3 in [Telnet Connection](#), above.

Exiting Setup Mode

To exit Setup Mode:

You have two options:

- ◆ To save all changes and reboot the device, select option **9 Save and exit** from the Change Setup menu. All values are stored in nonvolatile memory.
- ◆ To exit the configuration mode without saving any changes or rebooting, select option **8 Exit without save** from the Change Setup menu.

6: Setup Mode: Server Configuration

This chapter explains how to configure the network settings.

Note: Current values display in parentheses.

Server Configuration (Option 0)

The unit's basic network parameters display when you select **Server configuration** (option 0).

Network Mode

Select the network mode for the WiBox 2100E device server. Options available are **Wired Only**, **Wireless Only**, and **Bridging**. (For more information on bridging, see [11: Wireless Bridging](#).)

Note: The bridging option will be available in firmware version 6.2 and later.

```
Network mode: 0=Wired Only, 1=Wireless Only, 2=Bridging(One Host) (0) ?
```

IP Address

If DHCP is not used to assign IP addresses, enter the IP address manually. The IP address must be set to a unique value in the network. Enter each octet and press **Enter** between each section. The current value displays in parentheses.

```
IP Address : (000) (000) (000) (000) _
```

- ◆ If DHCP is used, the third octet of the IP address sets the BootP/DHCP/AutoIP options. The following table shows the bits you can manually configure to force the WiBox 2100E to disable AutoIP, DHCP, or BootP. To disable an option, set the appropriate bit.

Table 6-1. BootP/DHCP/AutoIP options

Options	Bit
AutoIP	0
DHCP	1
BootP	2

For example, if the third octet is 0.0.5.0, the AutoIP and BootP options are disabled; only DHCP is enabled. (The value 5 results from adding the decimal values of a binary number with bits 0 and 2, for example 0101.) This is the most common setting when using DHCP.

Set Gateway IP Address

The gateway address, or router, allows communication to other LAN segments. The gateway address should be the IP address of the router connected to the same LAN segment as the unit.

The gateway address must be within the local network. The default setting is **N** (No), meaning the gateway address has not been set. To set the gateway address, type **Y** and enter the address.

```
Set Gateway IP Address (N) ? Y
Gateway IP addr (000) (000) (000) (000)_
```

Netmask: Number of Bits for Host Part

A netmask defines the number of bits taken from the IP address that are assigned for the host part.

```
Netmask: Number of Bits for Host Part (0=default) (0) _
```

The unit prompts for the number of host bits to be entered, then calculates the netmask, which appears in standard decimal-dot notation (for example, 255.255.255.0) when the saved parameters display. The default setting is **0**.

Table 6-2. Standard IP Network Netmasks

Network Class	Host Bits	Netmask
A	24	255.0.0.0
B	16	255.255.0.0
C	8	255.255.255.0

Set DNS Server IP Address

The DNS server allows the name of a remote machine to be resolved automatically. The default is **N** (No), indicating the DNS server address has not been set. To set the DNS server address, type **Y**. At the prompt, enter the DNS server address. If the device is DHCP enabled, the DHCP server provides the DNS server IP address, which will override this configured value.

Note: This setting is applicable only in Manual Connection mode.

```
Set DNS Server IP addr (N) ?
```

Change Telnet Configuration Password

Setting the Telnet configuration password prevents unauthorized access to the setup menu through a Telnet connection to port 9999 or through web pages. The password must have 4 characters. The default setting is **N** (No).

```
Change Telnet/Web Manager password (N) ?
```

An enhanced password setting (for Telnet and Web access) of 16 characters is available under Configurable Server Port Number.

The host attached to the WiBox 2100E may communicate with other CoBos devices on the wireless network using the Lantronix Configuration Access Protocol (LCAP). This service is available on server port number 0x77FE (30718) and is fixed.

When the WiBox 2100E is in bridging mode, the LCAP port number is modifiable so that the LCAP service is available on the wired interface for WiBox 2100E configuration. See [11: Wireless Bridging](#) for more information.

```
Config Server Port Number: (30718) ? _
```

Automatic Host MAC Detection

When Automatic Host MAC Detection is disabled (set to "N") for bridging mode, the MAC address of the bridged host can be set. When enabled (set to "Y"), the MAC address of the bridged host is detected automatically. See [69](#).

```
Automatic Host MAC Detection <Y> ? _
Wired Host MAC <00:00:00:00:00:00:> <00> _
```

Note: You do not need a password to access the Setup Mode window by a serial connection.

DHCP Name

If a DHCP server has automatically assigned the IP address and network settings, you can discover the unit by using the DeviceInstaller network search feature or Monitor Mode (see [9: Monitor Mode](#)).

Note: When you enter Monitor Mode from the serial port with network connection enabled and issue the **NC** (Network Communication) command, you see the unit's IP configuration.

There are three methods for assigning DHCP names to the unit.

- ◆ **Default DHCP Name:** If you do not change the DHCP name, and you are using an IP of 0.0.0.0, then the DHCP name defaults to CXXXXXX (XXXXXX is the last 6 digits of the MAC (hardware) address shown on the label on the bottom/side of the unit). For example, if the MAC address is 00-20-4A-12-34-56, then the default DHCP name is C123456.
- ◆ **Custom DHCP Name:** You can create your own DHCP name. If you are using an IP address of 0.0.0.0, then the last option in Server configuration is **Change DHCP device name**. This option allows you to change the DHCP name to an alphanumeric name (LTX in our example).

```
Change DHCP device name (not set) ? (N) Y
Enter new DHCP device name : LTX
```

- ◆ **Numeric DHCP Name:** You can change the DHCP name by specifying the last octet of the IP address. When you use this method, the DHCP name is LTXYY where YY is what you chose for the last octet of the IP address. If the IP address you specify is 0.0.0.12, then the DHCP name is LTX12. This method only works with two-digit numbers (01-99).

7: Setup Mode: Channel Configuration

This chapter explains how to configure the serial port.

Notes:

- ◆ Current values display in parenthesis.
- ◆ You must enter some values in hexadecimal notation. (See B: Binary to Hexadecimal Conversions on page 88.)

Channel 1 (Option 1)

Select **Channel 1** (option 1) from the Change Setup menu to define how the serial port responds to network and serial communications. The following sections describe the configurable parameters within the **Channel** configuration menu.

Figure 7-1. Serial Port Parameters

```
Baudrate (9600) ?
I/F Mode (4C) ?
Flow (00) ?
Port No (10001) ?
ConnectMode (C0) ?
Send '+++ ' in Modem Mode (Y) ?
Show IP addr after 'RING' (Y) ?
Auto increment source port (N) ?
Remote IP Address : (000) .(000) .(000) .(000)
Remote Port (0) ?
DisConnMode (00) ?
FlushMode (00) ?
DisConnTime (00:00) ?:
SendChar 1 (00) ?
SendChar 2 (00) ?
```

Baudrate

The unit and attached serial device, such as a modem, must agree on a speed or baud rate to use for the serial connection. Valid baud rates are 300, 600, 1200, 2400, 4800, 9600 (default), 19200, 38400, 57600, 115200, 230400, 460800, or 921600. Enter a baud rate of 00 in channel settings to disable the serial port. The current value is displayed in parentheses.

```
Baudrate (9600) ? _
```

I/F (Interface) Mode

The Interface (I/F) Mode is a bit-coded byte entered in hexadecimal notation. The default setting is **4C**.

Note: RS-422 4-wire and RS-485 2-wire are available on Channel 2 only.

I/F Mode (4C) ? _

The following table displays available I/F Mode options:

Note: All bit positions in the table that are blank represent “don’t care” bits for that particular option; they can be set to either a 0 or 1 value.

Table 7-1. Interface Mode Options

I/F Mode Option	7	6	5	4	3	2	1	0
RS-232C ⁽¹⁾							0	0
RS-422 4-wire							0	1
RS-485 2-wire							1	1
7 Bit					1	0		
8 Bit					1	1		
No Parity			0	0				
Even Parity			1	1				
Odd Parity			0	1				
1 stop bit	0	1						
2 stop bits ⁽¹⁾	1	1						

(1) 2 stop bits are implemented by the software. This might influence performance.

The following table demonstrates some common I/F Mode settings:

Table 7-2. Common Interface Mode Settings

Common I/F Mode Setting	Binary	Hex
RS-232C, 8-bit, No Parity, 1 stop bit	0100 1100	4C
RS-232C, 7-bit, Even Parity, 1 stop bit	0111 1000	78
RS-485 2-wire, 8-bit, No Parity, 1 stop bit	0100 1111	4F
RS-422 4-wire, 8-bit, Odd Parity, 1 stop bit	0101 1101	5D

Flow

Flow control sets the local handshaking method for stopping serial input/output. The default setting is **00**.

Flow (00) ? _

Use the following table to select flow control options:

Table 7-3. Flow Control Options

Flow Control Option	Hex
No flow control	00
XON/XOFF flow control	01
Hardware handshake with RTS/CTS lines	02
XON/XOFF pass characters to host	05

Port Number

The setting represents the source port number in TCP connections. It is the number that identifies the channel for remote initiating connections.

Port No (10001) ? _

The default setting for Port 1 is **10001**. The range is 1-65535, except for the following reserved port numbers:

Table 7-4. Reserved Port Numbers

Port Numbers	Reserved for
1 – 1024	Reserved (well known ports)
9999	Telnet setup
14000-14009	Reserved for Redirector
30704	Reserved (77F0h)
30718	Reserved (77FEh)

Warning: We recommend that you not use the reserved port numbers for this setting as incorrect operation may result.

Use Port **0** for the outgoing local port to change with each connection. The port range is 50,000 to 59,999. Each subsequent connection increments the number by 1 (it wraps back around to 50,000).

Only use this automatic port increment feature to initiate a connection using TCP. Set the port to a non-zero value when the unit is in a passive mode or when using UDP instead of TCP.

Connect Mode

Connect Mode defines how the unit makes a connection, and how it reacts to incoming connections over the network. The default setting is **C0**.

ConnectMode (C0) ? _

Enter Connect Mode options in hexadecimal notation.

Note: All bit positions in the table that are blank represent “don’t care” bits for that particular option; they can be set to either a 0 or 1 value.

Table 7-5. Connect Mode Options

Connect Mode Option	7	6	5	4	3	2	1	0
a) Incoming Connection								
Never accept incoming	0	0	0					
Accept with active Modem Control In	0	1	0					
Always Accept	1	1	0					
b) Response								
Nothing (quiet)				0				
Character response (C=connect, D=disconnect, N=unreachable)				1				
c) Active Startup								
No active startup					0	0	0	0
With any character					0	0	0	1
With active Modem Control In					0	0	1	0
With a specific start character					0	0	1	1
Manual connection					0	1	0	0
Autostart					0	1	0	1
Hostlist	0	0	1	0				
d) Datagram Type								
Directed UDP					1	1	0	0
e) Modem Mode								
No Echo			0	0		1	1	
Data Echo & Modem Response (Numeric)			0	1		1	1	1
Data Echo & Modem Response (Verbose)			0	1		1	1	0
Modem Response Only (Numeric)			0	0	1	1	1	1
Modem Response Only (Verbose)			0	0	1	1	1	0

a) Incoming Connection

Never Accept Incoming	Rejects all external connection attempts.
Accept with active Modem Control In	Accepts external connection requests only when Modem Control In input is asserted. Cannot be used with Modem Mode.
Always Accept	Accepts any incoming connection when a connection is not already established. Default setting.

b) Response

Character Response	<p>A single character is transmitted to the serial port when there is a change in connection state: C = connected, D = disconnected, N = host unreachable.</p> <p>Single character mode specifies the character response. The IP address of the host connecting to the unit displays when the unit is in verbose mode. This option is overridden when the Active Start Modem Mode or Active Start Host List is in effect. Default setting is Nothing (quiet).</p>
---------------------------	--

c) Active Startup

No Active Startup	Does <i>not</i> attempt to initiate a connection under any circumstance. Default setting.
With Any Character	Attempts to connect when any character is received from the serial port.
With active Modem Control In	Attempts to connect when the Modem Control In input changes from not asserted to asserted.
With a Specific Start Character	Attempts to connect when it receives a specific start character from the serial port. The default start character is carriage return.
Manual Connection	<p>Attempts to connect when directed by a command string received from the serial port. The first character of the command string must be a C (ASCII 0x43), and the last character must be either a carriage return (ASCII 0x0D) or a line feed (0x0A). No blanks or space characters may be in the command string. Between the first and last command string characters must be a full or partial destination IP address and may be a destination port number.</p> <p>The IP address must be in standard decimal-dot notation and may be a partial address, representing the least significant 1, 2, or 3 bytes of the remote IP address. The period is required between each pair of IP address numbers.</p> <p>If present, the port number must follow the IP address, must be presented as a decimal number in the range 1-65535, and must be preceded by a forward slash (ASCII 0x2F). The slash separates the IP address and the port number. If you omit the port number from a command string, the internally stored remote port number starts a connection.</p> <p>If a partial IP address is presented in a command string, it is interpreted to be the least significant bytes of the IP address and</p>

	<p>uses the internally stored remote IP address to provide the most significant bytes of the IP address. If the IP address entered is 0.0.0.0/0, the device server enters Monitor Mode.</p> <p>For example, if the remote IP address already configured in the unit is 129.1.2.3, then an example command string would be C3/7. (This would connect to 129.1.2.3 and port 7.) You may also use a different ending for the connection string. For example, C50.1/23 would connect you to 129.1.50.1 and port 23.</p> <p>If an IP address does not follow the first command string character (which is "C"), the subsequent character string is interpreted as the host name and domain to be used in DNS lookup. This character string can include a destination port number as well. The port number can be preceded by either a forward slash (/) or a colon (:).</p>
--	--

Table 7-6. Manual Connection Address Example

Command String	Result if remote IP is 129.1.2.3 and remote port is 1234
C121.2.4.5/1	Complete override; connection is started with host 121.2.4.5, port 1.
C5	Connects to 129.1.2.5, port 1234.
C28.10/12	Connects to 129.1.28.10, port 12.
C0.0.0.0/0	Enters Monitor Mode.
Cwww.lantronix.com/80	For example, Cwww.lantronix.com/80 would try to connect to the Lantronix web server if the <hostname:domain> (www.lantronix.com) is configured in the DNS server database.

Autostart (Automatic Connection)	If you enable Autostart , the unit automatically connects to the remote IP address and remote port specified when the firmware starts.
Hostlist	<p>If you enable this option, the device server scrolls through the hostlist until it connects to a device listed in the hostlist table. Once it connects, the unit stops trying to connect to any others. If this connection fails, the unit continues to scroll through the table until it is able to connect to another IP in the hostlist.</p> <p>Hostlist supports a minimum of 1 and a maximum of 12 entries. Each entry contains the IP address and the port number.</p> <p>The hostlist is disabled for Manual and Modem Modes. The unit does not accept a data connection from a remote device when the hostlist option is enabled.</p>

Figure 7-2. Hostlist Option

```

Baudrate (9600) ?
I/F Mode (4C)
Flow (00) ?
Port No (10001) ?
ConnectMode (25) ?
Send '+++\' in Modem Mode (Y) ?
Auto increment source port (N) ?

Hostlist :
01. IP : 172.019.000.001 Port : 00023
02. IP : 172.019.000.002 Port : 03001
03. IP : 172.019.000.003 Port : 10001

Change Hostlist ? (N) ? Y
01. IP address : (172) .(019) .(000) .(001) Port : (23)
02. IP address : (172) .(019) .(000) .(001) Port : (3001)
03. IP address : (172) .(019) .(000) .(001) Port : (10001)
04. IP address : (000) .(000) .(000) .(000)
Hostlist :
01. IP : 172.019.000.001 Port : 00023
02. IP : 172.019.000.002 Port : 03001
03. IP : 172.019.000.003 Port : 10001

Change Hostlist ? (N) ? N
Hostlist Retrycounter (3)
Hostlist Retrytimeout (250)
DisConnMode (00)
FlushMode (00)
DisConnMode (00:00) ?:
SendChar 1 (00) ?
SendChar 2 (00) ?

```

To enable the hostlist:

1. Enter a **Connect Mode** of 0x20 (2X), where X is any digit. The menu shows a list of current entries already defined in the product.
2. To delete, modify, or add an entry, select **Yes**. If you enter an IP address of **0.0.0.0**, that entry and all others after it are deleted.
3. After completing the hostlist, repeat the previous step if necessary to edit the hostlist again.

4. For **Retrycounter**, enter the number of times the WiBox 2100E device server should try to make a good network connection to a hostlist entry that it has successfully ARPed. The range is 1-15, with the default set to **3**.
5. For **Retrytimeout**, enter the number of seconds the unit should wait before failing an attempted connection. The time is stored as units of milliseconds in the range of 10-65535. The default setting is **250**.

d) Datagram Type

Directed UDP	<p>When selecting this option, you are prompted for the Datagram type. Enter 01 for directed or broadcast UDP. Datagrams of type 01 can be sent as a broadcast by enabling the Send as Broadcast option. The default is not to broadcast.</p> <p>Note: Datagrams are sent as subnet-directed broadcasts.</p> <p>When the UDP option is in effect, the unit never attempts to initiate a TCP connection because it uses UDP datagrams to send and receive data.</p>
---------------------	---

e) Modem Mode

In Modem (Emulation) Mode, the unit presents a modem interface to the attached serial device. It accepts AT-style modem commands and handles the modem signals correctly.

Normally, there is a modem connected to a local PC and a modem connected to a remote machine. A user must dial from the local PC to the remote machine, accumulating phone charges for each connection. Modem Mode allows you to replace modems with the WiBox 2100E, and to use an Ethernet connection instead of a phone call. By not having to change communications applications, you avoid potentially expensive phone calls.

To select Modem Mode, set the Connect Mode to **C6** (no echo), **D6** (echo with full verbose), **D7** (echo with numeric response), **CF** (modem responses only, numeric response), or **CE** (modem responses only, full verbose).

Note: If the unit is in Modem Mode, and the serial port is idle, the unit can still accept network TCP connections to the serial port if Connect Mode is set to **C6** (no echo), **D6** (echo with full verbose), **D7** (echo with numeric response), **CF** (modem responses only, numeric response), or **CE** (modem responses only, full verbose).

Without Echo	<p>In Modem Mode, echo refers to the echo of all of the characters entered in command mode; it does <i>not mean</i> to echo data that is transferred. Quiet Mode (without echo) refers to the modem <i>not</i> sending an answer to the commands received (or displaying what was typed).</p>
Data Echo & Modem Response	<ul style="list-style-type: none"> ◆ Full Verbose: The unit echoes modem commands and responds to a command with a message string shown in the table below. ◆ Numeric Response: The unit echoes modem commands and responds to a command with a numeric response.
Modem Responses Only	<ul style="list-style-type: none"> ◆ Full Verbose: The unit does not echo modem commands and responds to a command with a message string shown in the table below. ◆ Numeric Response: The unit does not echo modem commands and responds to a command with a numeric response.

Table 7-7. Modem Mode Messages

Message	Meaning
Full Verbose	
OK	Command was executed without error.
CONNECT	A network connection has been established.
NO CARRIER	A network connection has been closed.
RING n.n.n.n.	A remote device, having IP address n.n.n.n, is connecting to this device.
Numeric Response	
0	OK
1	Connected
2	Ring
3	No Carrier
4	Error

Received commands must begin with the two-character sequence **AT** and be terminated with a carriage return character.

The unit ignores any character sequence received *not* starting with **AT**, and only recognizes and processes single **AT**-style commands. The unit treats compound **AT** commands as unrecognized commands.

If the **Full Verbose** option is in effect, the unit responds to an unrecognized command string that is otherwise formatted correctly (begins with **AT** and ends with carriage return) with the "OK" message and takes no further action.

If the **Numeric Response** option is in effect, the unit responds to an unrecognized command string that is otherwise formatted correctly with the "OK" message and takes no further action.

When an active connection is in effect, the unit transfers data and does not process commands received from the serial interface.

When a connection is terminated or lost, the unit reverts to command mode.

When an active connection is in effect, the unit terminates the connection if it receives the following sequence from the attached serial device:

- ◆ No serial data is received for one second.
- ◆ The character sequence +++ is received, with no more than one second between each two characters.
- ◆ No serial data is received for one second after the last + character. At this time, the unit responds affirmatively per the selected echo/response mode.
- ◆ The character string **ATH** is received, terminated with a carriage return. The unit responds affirmatively according to the selected echo/response mode and drops the network connection. The serial interface reverts to accepting command strings.

If this sequence is not followed, the unit remains in data transfer mode.

Table 7-8. Modem Mode Commands

Modem Mode Command	Function
ATDTx.x.x.x,pppp or ATDTx.x.x.x/pppp or ATDTx.x.x.x:pppp	Makes a connection to an IP address (x.x.x.x) and a remote port number (pppp).
ATDTx.x.x.x	Makes a connection to an IP address (x.x.x.x) and the remote port number defined within the unit.
ATD0.0.0.0	Forces the unit into Monitor Mode if a remote IP address and port number are defined within the unit.
ATD or ATDT	Forces the unit into Monitor Mode if a remote IP address and port number are not defined within the unit.
ATDx.x.x.x	Makes a connection to an IP address (x.x.x.x) and the remote port number defined within the unit.
ATH	Hangs up the connection (Entered as +++ATH).
ATS0=n	Enables or disables connections from the network going to the serial port. n=0 disables the ability to make a connection from the network to the serial port. n=1-9 enables the ability to make a connection from the network to the serial port. n>1-9 is invalid.
ATEn	Enables or disables character echo and responses. n=0 disables character echo and responses. n=1 enables character echo and responses.
ATVn	Enables numeric response or full verbose. n=0 enables numeric response. n=1 enables full verbose.

Note: The unit recognizes these AT commands as single commands such as ATE0 or ATV1; it does not recognize compound commands such as ATE0V.

Send the Escape Sequence (+++) in Modem Mode

```
Send '+++' in Modem Mode (Y) ? _
```

Disable or enable the WiBox 2100E's ability to send the escape sequence. The default setting is Y (Yes) (send the escape sequence).

Show IP addr after 'RING'

```
Show IP addr after 'RING' <Y> ?
```

Disable or enable the WiBox 2100E's ability to show the IP address after RING in Modem Mode. The default is Y (Yes), to show the IP address.

Auto Increment Source Port

```
Auto increment source port (N) ? _
```

Y (Yes) auto increment the source port. The WiBox 2100E increments the port number used with each new connection.

Remote IP Address

This is the destination IP address used with an outgoing connection.

```
Remote IP Address : (000) (000) (000) (000)_
```

Note: This option does not display when Hostlist is enabled from the **ConnectMode** prompt (see [Connect Mode](#) on page 52 for more information).

Remote Port

You must set the remote TCP port number for the unit to make outgoing connections. This parameter defines the port number on the target host to which a connection is attempted.

```
Remote Port (0) ? _
```

To connect an ASCII terminal to a host using the unit for login purposes, use the remote port number 23 (Internet standard port number for Telnet services).

Note: This option does not display when Hostlist is enabled from the **ConnectMode** prompt (see [Connect Mode](#) on page 52 for more information).

DisConnMode

This setting determines the conditions under which the unit will cause a network connection to terminate. The default setting is **00**.

```
DisConnMode (00) ? _
```

Notes:

In **DisConnMode** (Disconnect Mode), **Modem Control In** either drops the connection or is ignored.

Note: All bit positions in the table that are blank represent “don’t care” bits for that particular option; they can be set to either a 0 or 1 value.

Table 7-9. Disconnect Mode Options

Disconnect Mode Option	7	6	5	4	3	2	1	0
Disconnect when Modem Control In is not asserted ⁽⁶⁾	1							
Ignore Modem Control In	0							
Telnet Com Port Cntrl and terminal type setup ⁽¹⁾		1						
Channel (port) password ⁽²⁾				1				
Hard disconnect ⁽³⁾					0			
Disable hard disconnect					1			
State LED off with connection ⁽⁴⁾								1
Disconnect with EOT (^D) ⁽⁵⁾			1					

(1) The WiBox 2100E sends the "Terminal Type" upon an outgoing connection.

(2) A password is required for a connection to the serial port from the network.

(3) The TCP connection closes even if the remote site does not acknowledge the disconnection.

(4) When there is a network connection to or from the serial port, the state LED turns off instead of blinking.

(5) When **Ctrl+D** or **Hex 04** is detected, the connection is dropped. Both **Telnet Com Port Cntrl** and **Disconnect with EOT** must be enabled for **Disconnect with EOT** to function properly. **Ctrl+D** is only detected going from the serial port to the network.

(6) When **Modem Control In** transitions from a high state to a low state, the network connection to or from the serial port drops.

Flush Mode (Buffer Flushing)

Using this parameter, you can control line handling and network buffers with connection startup and disconnect. The default setting is **00**.

```
FlushMode (00) ? _
```

You can also select between two different packing algorithms.

Note: All bit positions in the table that are blank represent "don't care" bits for that particular option; they can be set to either a 0 or 1 value.

Table 7-10. Flush Mode Options

Function	7	6	5	4	3	2	1	0
Input Buffer (Serial to Network)								
Clear with a connection initiated from the device to the network				1				
Clear with a connection initiated from the network to the device			1					

Function	7	6	5	4	3	2	1	0
Clear when the network connection to or from the device is disconnected		1						
Output Buffer (Network to Serial)								
Clear with a connection initiated from the device to the network								1
Clear with a connection initiated from the network to the device							1	
Clear when the network connection to or from the device is disconnected						1		
Alternate Packing Algorithm (Pack Control)								
Enable	1							

Pack Control

The packing algorithms define how and when packets are sent to the network. The standard algorithm is optimized for applications in which the unit is used in a local environment, allowing for very small delays for single characters, while keeping the packet count low. The alternate packing algorithm minimizes the packet count on the network and is especially useful in applications in a routed Wide Area Network (WAN). Adjusting parameters in this mode can economize the network data stream.

Pack control settings are enabled in Flush Mode. Set this value to **00** if you do not need specific functions.

Note: All bit positions in the table that are blank represent “don’t care” bits for that particular option; they can be set to either a 0 or 1 value.

Table 7-11. Pack Control Options

Option	7	6	5	4	3	2	1	0
Packing Interval								
Interval: 12 msec							0	0
Interval: 52 msec							0	1
Interval: 250 msec							1	0
Interval: 5 sec							1	1
Trailing Characters								
None					0	0		
One					0	1		
Two					1	0		
Send Characters								
2-Byte Send Character Sequence				1				

Option	7	6	5	4	3	2	1	0
Send Immediately After Send chars			1					

Packing Interval

Packing Interval defines how long the unit should wait before sending accumulated characters. This wait period is between successive network segments containing data. For alternate packing, the default interval is **12** ms.

Trailing Characters

In some applications, CRC, Checksum, or other trailing characters follow the end-of-sequence character; this option helps to adapt frame transmission to the frame boundary. The default setting is **00** (none).

Send Characters

- ◆ If **2-Byte Send Character Sequence** is enabled, the unit interprets the sendchars as a 2-byte sequence; if this option is not enabled, the unit interprets them independently. The default setting is **0** (disabled).
- ◆ If **Send Immediately After Characters** is *not* set, any characters already in the serial buffer are included in the transmission after a "transmit" condition is found. If this option is set, the unit sends immediately after recognizing the transmit condition (sendchar or timeout). The default setting is **0**.

Note: A transmission might occur if status information needs to be exchanged or an acknowledgment needs to be sent.

DisConnTime (Inactivity Timeout)

Use this parameter to set an inactivity timeout. The unit drops the TCP connection to port 10001/10002* if there is no activity on the serial line before the set time expires. Enter time in the format mm:ss, where m is the number of minutes and s is the number of seconds.

Note*: The default port number for Port 1 is 10001 and 10002 for Port 2. However, port numbers may be set to a different value.

```
DisConnTime (00:00) ?:
```

To disable the inactivity timeout, enter **00:00**. Range is 0 (disabled) to **5999** seconds (99 minutes, 59 seconds). The default setting is **0**.

Send Characters

Enter up to two characters in hexadecimal representation in sendchar.

```
SendChar 1 (00) ? _
SendChar 2 (00) ? _
```

If the unit receives a character on the serial line that matches one of these characters, it sends the character immediately, along with any awaiting characters, to the TCP connection. This action minimizes the response time for specific protocol characters on the serial line (for example, ETX, EOT). Setting the first sendchar to **00** disables the recognition of the characters. Alternatively, the unit can interpret two characters as a sequence (see [Pack Control](#)). The default setting is **00**.

Telnet Terminal Type

This parameter displays only if you enabled the terminal type option in Disconnect Mode. With this option enabled, you can use the terminal name for the Telnet terminal type. Enter only one name.

With terminal type option enabled, the unit also reacts to the EOR (end of record) and binary options, useful for applications like terminal emulation to IBM hosts.

Channel (Port) Password

This parameter displays only if the channel (port) password option is enabled in Disconnect Mode. With this option enabled, you can set a password on the serial port. Blank by default.

WLAN Settings

Without adequate protection, a wireless LAN is susceptible to access by unauthorized users. As such, WiBox 2100E features the WPA security standard, based on IEEE802.11i and IEEE802.1X. WEP is provided for backwards compatibility and interaction with older devices.

To modify WLAN settings, select **4 WLAN** from the Change Setup menu.

Topology

Select **Infrastructure** (ESS) mode or **Adhoc** (IBSS) mode. Infrastructure mode communicates with Access Points. Ad Hoc mode communicates only with other clients.

```
Topology 0=Infrastructure, 1=Adhoc (0) ? _
```

Network Name (SSID)

Enter the name of the network to which the WiBox 2100E will connect.

```
Network name (LTRX_IBSS) ? _
```

Adhoc Network Channel

When **Adhoc** is selected in the **Topology** parameter and the WiBox 2100E cannot find the specified network, it creates one with that name by transmitting a beacon on the selected channel.

```
Channel (11) ? _
```

Only channels allowed in the country for which the WiBox 2100E is designated can be selected. The country displays in the Setup Mode settings overview.

Security Suite

The WiBox 2100E features WEP, WPA, and 802.11i/WPA2-Personal to secure all wireless communication. WPA and 802.11i/WPA2-Personal are not available when **Adhoc** is selected as the topology.

The 802.11i/WPA2-Personal mode is compliant with the Robust Secure Network that is specified in the IEEE standard 802.11i. It enables the AES-based strong CCMP encryption.

Encryption	Set the type to the minimum required security level. The "+" sign indicates that the group (broadcast) encryption method is different from the pairwise (unicast) encryption (WEP and TKIP).
-------------------	--

802.11i/WPA2-Personal

```
Change key (N) ? Y
Display key (N) ?
Key type 0=hex, 1=passphrase (1) ?
Enter key: *****
Encryption: 0=CCMP, 1=CCMP+TKIP, 2=CCMP+WEP, 3=TKIP, 4=TKIP+WEP (3) ?
```

Change key	Select (Y) Yes to modify the currently configured key.
Display key	Select (Y) Yes to show the currently configured key/passphrase.
Key type	Indicate whether the new key is in hexadecimal or passphrase format.
Enter key	Enter the passphrase. The maximum length is 63 characters. Lantronix recommends using a passphrase of 20 characters or more for maximum security.
Encryption	Set the type to the minimum required security level. The "+" sign indicates that the group (broadcast) encryption method is different from the pairwise (unicast) encryption. For example, for CCMP+TKIP, CCMP is the pairwise encryption and TKIP is the group encryption. CCMP is the default.

Fixed or Automatic Data Rate

WiBox 2100E permits the control of the transmission rate. Select **0** to set a fixed data rate, or select **1** to set an automatic data rate. The default setting is **1** (auto).

```
TX Data rate 0=fixed, 1=auto fallback (1) ? _
```

Transmission Data Rate

If the above **TX Data rate** is set to **fixed**, the selected data rate is the WiBox 2100E's fixed transmission rate. If the above **TX Data rate** is set to **auto**, the selected data rate is the WiBox 2100E's maximum data rate. Lower data rates allow for larger distances. They may also be required when communicating with older devices. The default setting is **54 Mbps**.

```
TX Data rate 0=1, 1=2, 2=5.5, 3=11
4=18, 5=24, 6=36, 7=54 Mbps (0) ? _
```

Note: The WiBox 2100E's maximum data rate cannot be selected when **TX Data rate** is set to **auto**.

Minimum TX Data Rate

Selects the minimum data rate the device will use when auto-fallback is enabled. The default is **1 Mbps**.

```
MinTX Data Rate 0=1, 1=2, 2=5.5, 3=11, 4=18, 5=24, 6=36, 7=54 Mbps <0> ? _
```

Note: If Auto Rate Fallback is enabled and a minimum TX data rate other than 1Mbps is configured, the radio will operate in Single Rate Drop mode. This means that if a rate drop becomes necessary, the radio will drop from the maximum rate to the lowest rate, ignoring all

rates in between. This reduces the potential number of packet retransmission attempts, because the radio attempts to transmit a packet three times before transitioning to the next lowest TX rate.

Note: If the Minimum TX Data Rate is set for 54 Mbps for the minimum and maximum, the auto fallback capability is eliminated.

Enable Power Management

This allows the software to turn off the radio when expecting not to receive or transmit soon. This feature reduces the power consumption by up to 170 mA. Enabling power management increases the response time, because the radio needs to start up again. The radio is enabled to synchronize and check for incoming messages (every 100 ms).

Note: This option is not available when the **Topology** is set to **Adhoc**.

```
Enable power management (N) ? _
```

Enable Soft AP Roaming

If enabled, the Lantronix SmartRoam technology manages the dynamic list of APs belonging to the same network as the AP to which the WiBox 2100E is currently associated and stores relevant selection criteria for this list. The WiBox 2100E uses these criteria to identify a candidate AP. If the candidate AP is not the current one, the WiBox 2100E dissociates from the current AP and associates to the candidate.

The roaming technology also triggers candidate selection if the WiBox 2100E reaches the boundaries of good signal coverage for the current AP instead of waiting until signal quality degrades substantially.

Choose to enable **Y** (Yes) or disable **N** (No) SmartRoam technology. The default value is N.

```
Enable Soft AP Roaming <Y> ?
```

Max TX Failures

Determines the maximum number of consecutive transmit packet failures before the device will drop its association with the AP and attempt to establish a new one. The range of attempts is 6 to 64; 255 equals disabled. The default is 6 failed attempts.

```
Max failed packets <6 - 64; 255=disable>: <6> ? _
```

8: Setup Mode: Advanced Settings

Expert Settings (Option 5)

Note: You can change these settings using Telnet or serial connections only, not Web Manager.

Caution: Only an expert should change these parameters. You must definitely know the consequences the changes may have.

Figure 8-1. Expert Settings

```
TCP Keepalive time in s (1s - 65s; 0s=disable): (45) ?
ARP Cache timeout in s (1s - 600s) : (600) ?
CPU performance (0=Regular, 1=Low, 2=High): (0) ?
Disable Monitor Mode @ bootup (N) ?
HTTP Port Number : (80) ?
MTU Size (512 - 1400): (1400) ?
TCP Re-transmission Timeout (500 - 4000) (ms): (500) ?
Enable alternate MAC (N) ?
Ethernet connection type: (0) ?
```

Note: The Config Server Port Number option and Automatic Host MAC Detection option display only in Bridging mode as shown in the next window. For more information, see Configurable Server Port Number and Automatic Host MAC Detection on page 69.

The default settings are listed below:

TCP Keepalive time in s (1s – 65s; 0s=disable)	45
ARP Cache timeout in s (1s – 600s)	600
CPU Performance	Regular
Disable Monitor Mode @ bootup	N (No) (resulting in Monitor Mode enabled)
HTTP Port Number (1-65535)	80
MTU Size (512 – 1400)	0 (resulting in an operational value of 1400)
TCP Re-transmission Timeout (500 - 4000) (ms)	500
Enable alternate MAC	Disabled (OEM use only)
Ethernet connection type	0 (resulting in auto-negotiation)
Config Server Port Number	30718
Automatic Host MAC Detection	Y (Yes)

TCP Keepalive time in seconds

This option allows you to change how many seconds the unit waits during a silent connection before attempting to see if the currently connected network device is still on the network. If the unit gets no response, it drops that connection. The default setting is **45**.

```
TCP Keepalive time in s (1s - 65s; 0s=disable): (45) ?
```

ARP Cache timeout in seconds

Whenever the unit communicates with another device on the network, it adds an entry into its ARP table. The ARP Cache timeout option allows you to define how many seconds (1-600) the unit will wait before timing out this table. The default setting is **600**.

```
ARP Cache timeout in s (1s - 600s) : (600) ?
```

CPU Performance

Select the WiBox 2100E device server's performance mode. Higher performance settings require more energy. **Low** is 26 Mhz, **Regular** is 48 Mhz, **High** is 88 Mhz. The default setting is **Regular**.

```
CPU performance (0=Regular, 1=Low, 2=High): (0) ?
```

Notes:

- ◆ If a baud rate of 460 Kbps or 920 Kbps is set, and the high performance mode is disabled, the operation of the serial channel would be out of the specified error tolerance, thereby leading to inconsistent speed settings on the two ends of the serial channel.
- ◆ *Increasing CPU clock speed consumes more power and generates more heat. This reduces the maximum operating temperature specification. See the appropriate product brief for details.*

Disable Monitor Mode at bootup

This option allows you to disable all entries into Monitor Mode during startup, except for the 'xxx' sequence. This prevents entry using **yyy**, **zzz**, **xx1**, and **yy1** key sequences (only during the bootup sequence). The default setting for Monitor Mode at bootup is **N** (No). (See [9: Monitor Mode](#).)

```
Disable Monitor Mode @ bootup (N) ? _
```

HTTP Port Number

This option allows the configuration of the web server port number. The valid range is 1-65535. The default setting HTTP port number is **80**.

```
HTTP Port Number : (80) ? _
```

MTU Size

The Maximum Transmission Unit (MTU) is the largest physical packet size a network can transmit for TCP and UDP. Enter between **512** and **1400** bytes. The default setting is **1400** bytes.

```
MTU Size: (1400) ? _
```

TCP Re-transmission Timeout

This feature allows the configuration of the desired TCP re-transmission timeout value. If the ACK is not received for a packet sent from the WiBox device, then the unit will retransmit the data. The valid range is 500-4000 msec.

```
TCP Re-transmission Timeout (500 - 4000) (ms): (500) ?
```

Enable Alternate MAC

If necessary, enable the alternate MAC address (if specified in the OEM setup record). The default setting is **N** (No).

```
Enable alternate MAC (N) ? _
```

Ethernet

Ethernet Connection Type

The WiBox 2100E allows for the Ethernet speed and duplex to be manually configured. Enter **0** for auto-negotiation (default). To select the speed and duplex, enter one of the following: **2** (10 Mbit/half duplex), **3** (10 Mbit/full duplex), **4** (100 Mbit/half duplex), or **5** (100 Mbit/full duplex).

```
Ethernet connection type: (0) ? _
```

Configurable Server Port Number

The host attached to the WiBox 2100E may communicate with other CoBos devices on the wireless network using the Lantronix Configuration Access Protocol (LCAP). This service is available on server port number 0x77FE (30718) and is fixed. When the WiBox 2100E is in bridging mode, the LCAP port number is modifiable so that the LCAP service is available on the wired interface for WiBox 2100E configuration. See [11: Wireless Bridging](#) for more information.

```
Config Server Port Number: (30718) ? _
```

Automatic Host MAC Detection

When Automatic Host MAC Detection is disabled (set to "N") for bridging mode, the MAC address of the bridged host can be set. When enabled (set to "Y"), the MAC address of the bridged host is detected automatically.

```
Automatic Host MAC Detection <Y> ? _
Wired Host MAC <00:00:00:00:00:00> <00> _ _
```

Security Settings (Option 6)

Security settings can only be changed using Setup Mode, through a Telnet or serial connection.

Note: As recommended, set security over the dedicated network or over the serial setup. If the parameters are set over the network (Telnet 9999), someone else could capture these settings.

Caution: Disabling both Telnet Setup and Port 77FE prevents users from accessing the setup menu from the network.

Disable SNMP

For security purposes, disable SNMP (if required) on the WiBox 2100E unit. The current setting displays in parentheses.

```
Disable SNMP (N) ? _
```

SNMP Community Name

The SNMP Community Name is a required field for NMS to read or write to a device. Enter a string of 1 to 13 characters.

```
SNMP Community Name (public): _
```

The default entry is **public**. The current value displays in parentheses.

Disable Telnet Setup

Note: Disabling both Telnet Setup and Port 77FE prevents users from accessing the setup menu from the network.

This setting defaults to the **N** (No) option. The **Y** (Yes) option disables access to Setup Mode by Telnet (port 9999). It only allows access locally via the web pages and the serial port of the unit.

```
Disable Telnet Setup (N) ? _
```

Disable TFTP Firmware Upgrade

This setting defaults to the **N** (No) option. The **Y** (Yes) option disables TFTP for network firmware upgrades.

```
Disable TFTP Firmware Update (N) : _
```

Disable Port 77FE (Hex)

Note: Disabling both **Telnet Setup** and **Port 77FE** and **Web Setup** prevents users from accessing the setup from the network.

Port 77FE is used by Web Manager and custom programs to configure the unit remotely. If required, disable this capability for security purposes.

```
Disable Port 77FEh (N) ? _
```

The default setting is the **N** (No) option, which enables remote configuration. As a result, configure the unit by using web pages, Telnet, or serial configuration.

The **Y** (Yes) option disables remote configuration and web sites.

Note: The **Y** (Yes) option disables many of the GUI tools for configuring the unit, including the embedded Web Manager tool.

Disable Web Server

The **Y** (Yes) option disables the web server. This setting defaults to the **N** (No) option. Disabling the web server also disables the web setup.

```
Disable Web Server (N) ? _
```

Disable Web Setup

The **Y** (Yes) option disables configuration via the Web Manager (but the web server remains active for custom web pages). This setting defaults to the **N** (No) option.

```
Disable Web Setup (N) ? _
```

Disable ECHO Ports

This setting controls whether port 7 echoes characters it receives.

```
Disable ECHO ports (Y) ? _
```

Enable Encryption

Rijndael is the block cipher algorithm chosen by the National Institute of Science and Technology (NIST) as the Advanced Encryption Standard (AES) to be used by the US government. The WiBox 2100E supports 128-, 192-, and 256-bit encryption key lengths.

Note: *Configuring encryption should be done through a local connection to the serial port of the WiBox 2100E, or via a secured network connection. Initial configuration information including the encryption key is sent in clear text over the network.*

To configure AES encryption on the WiBox 2100E:

Enable Encryption

```
Enable Encryption (Y) ? _
Key length in bits (256): _
Change Key (N) ? _
Enter Key: _
```

Enable Encryption	This option enables AES encryption for tunneling only.
Key length in bits	Valid options are 128, 192 and 256 bits.
Change Key	Select to modify the current AES encryption key. The default is N (No).
Enter Key	If you selected Change Key , enter the key (at the Enter Key prompt) in hexadecimal numbers. Enter 32 characters for 128 bits key length, 48 characters for 192 bits key length, or 64 characters for 256 bits key length.

Encryption only applies to the port selected for data tunneling (default 10001), regardless of whether you are using TCP or UDP.

Generally, one of two situations applies:

- ◆ Encrypted WiBox 2100E-to-WiBox 2100E communication. Be sure to configure both WiBox 2100E devices with the same encryption key.
- ◆ Third-party application to WiBox 2100E-encrypted communication: WiBox 2100E uses standard AES encryption protocols. To communicate successfully, products and applications on the peer side must use the same protocols and the same encryption key as the WiBox 2100E.
- ◆ Lantronix Secure Com Port Redirector provides an encrypted connection from Windows-based applications to the WiBox 2100E. Information about SCPR is at <http://www.lantronix.com/device-networking/utilities-tools/scpr.html> . A 30-day trial version of SCPR is included on the CD.

Enable Enhanced Password

This setting defaults to the **N** (No) option, which permits a 4-character password to protect Setup Mode by means of Telnet and web pages.

Enable Enhanced Password (Y) ? _

The **Y** (Yes) option allows an extended security password of 16-characters for protecting Telnet access.

Default Settings (Option 7)

Select **7 Defaults** from the Change Setup menu to reset the unit's Channel 1 configuration, Channel 2 configuration, Security, and Expert settings to the factory default settings.

The server configuration settings for IP address, gateway IP address, and netmask remain unchanged. See footnote for the WLAN settings that change.

Defaults for all settings are listed below.

Channel 1 Configuration

Baudrate	9600
I/F Mode	4C (1 stop bit, no parity, 8 bit, RS-232C)
Port No	10001
Connect Mode	C0 (always accept incoming connection; no active connection startup)
Hostlist Retry Counter	3
Hostlist Retry Timeout	250 (msec)
Send Character	0x0D (CR)
All other parameters	0

Channel 2 Configuration

Baudrate	9600
I/F Mode	4C (1 stop bit, no parity, 8 bit, RS-232C)
Port No	10002
Connect Mode	C0 (always accept incoming connection; no active connection startup)
Hostlist Retry Counter	3
Hostlist Retry Timeout	250 (msec)
Send Character	0x0D (CR)
All other parameters	0

WLAN Settings

Topology	1 (AdHoc)
-----------------	-----------

Network Name	LTRX_IBSS
Channel	11
Security	0 (none)
TX Data Rate Auto Fallback¹	1 (auto)
TX Data Rate¹	54 Mbps
Minimum TX Data Rate¹	1 Mbps
Max Failures¹	6 (failed attempts)
Enable Power Management	N (No)
Enable Soft AP Roaming	N (No)

Expert Settings

TCP Keepalive	45 (seconds)
ARP Cache Timeout	600 (seconds)
CPU Performance	Regular
Disable Monitor Mode	N (No)
HTTP Port Number	80
MTU Size	1400
TCP re-transmission Timeout	500 (msec)
Enable Alternate MAC	N (No) (for OEM use only)
Ethernet Connection Type	0 (auto negotiate)
Config Server Port Number	30718
Automatic Host MAC Detection	Y (yes)

Security Settings

Disable SNMP	N (No)
SNMP Community Name	public
Disable Telnet Setup	N (No)
Disable TFTP Firmware Update	N (No)
Disable Port 77FEh	N (No)
Disable Web Server	N (No)

¹ This is included in the **7 Defaults** menu reset.

Disable Web Setup	N (No)
Disable ECHO ports	Y (Yes)
Enable Encryption	N (No)
Enable Enhanced password	N (No)

Exit Configuration Mode

To exit Setup Mode, do one of the following:

- ◆ To save all changes and reboot the device, select option **9 Save and exit** from the Change Setup menu.
or
- ◆ To exit the configuration mode without saving any changes or rebooting, select option **8 Exit without save** from the Change Setup menu.

9: Monitor Mode

Monitor Mode is a command-line interface used for diagnostic purposes. There are two ways to enter Monitor Mode: locally via the serial port or remotely via the network.

Entering Monitor Mode via the Serial Port

To enter Monitor Mode locally:

1. Follow the same steps used for setting the serial configuration parameters (see 5:Telnet or Serial Port (Setup Mode) Configuration).
2. Instead of typing three **x** keys, however:
3. Type **zzz** to enter Monitor Mode with network connections.
4. Type **yyy** to enter Monitor Mode without network connections.

A **0>** prompt indicates that you have successfully entered Monitor Mode.

Entering Monitor Mode via the Network Port

To enter Monitor Mode using a Telnet connection:

1. Establish a Telnet session to the configuration port (9999). The following message displays:
2. MAC address 00204A96559B
3. Software version V6.7.0RC6 (100118)
4. AES Library version 1.8.2.1
5. Press Enter for Setup ModeType **M** (upper case).

A **0>** prompt indicates that you have successfully entered Monitor Mode.

Monitor Mode Commands

The following commands are available in Monitor Mode.

Note: All commands must be in capital letters.

Table 9-1. Monitor Mode Commands

Command	Command Name	Function
VS	Version	Queries software header record (16 bytes) of unit.
GC	Get Configuration	Gets configuration of unit as hex records (120 bytes).
SC	Send Configuration	Sets configuration of unit from hex records.

Command	Command Name	Function
PI x.x.x.x	Ping	Pings unit with IP address x.x.x.x to check device status.
AT	ARP Table	Shows the unit's ARP table entries.
TT	TCP Connection Table	Shows all incoming and outgoing TCP connections.
NC	Network Connection	Shows the unit's current IP address, gateway, subnet mask, and DNS server.
RS	Reset	Resets the unit.
QU	Quit	Exits diagnostics mode.
G0, G1, ...,Ge, Gf	Get configuration from memory page	Gets a memory page of configuration information from the device.
S0, S1, ...,Se, Sf	Set configuration to memory page	Sets a memory page of configuration information on the device.
GM	Get MAC address	Shows the unit's 6-byte MAC.
SS	Set Security record	Sets the Security record without the encryption key and length parameters. The entire record must still be written, but the encryption-specific bytes do not need to be provided (they can be null since they are not overwritten).
SA	Scan	Initiates a wireless scan if the wireless interface is enabled. Reports any stations found, including BSSID, SSID, and RSSI. If SA is followed by a string, the string is used to filter SSIDs before reporting. If the BSS does not broadcast its SSID, only the BSSID and RSSI are returned.
NS	Network Status	Reports the network interfaces' statuses. Includes potentially negotiated parameters like speed/duplex for Ethernet or BSSID, encryption, authentication for wireless interfaces.
co	Set IP address, host bits, gateway, and DNS server IP	Example: co 192.168.0.10 8 192.168.0.1 10001 192.168.1.10 with 192.168.0.10 = IP address of the WiBox 8 = number of host bits 192.168.0.1 = gateway IP address 10001 = port number of the WiBox 192.168.1.10 = IP address of the DNS Server The WiBox stores the setup and performs a reset. It sends an X before the reset if the command was OK.
WS	Wireless Status	Displays wireless module status that includes packets received, transmitted, and dropped.

Responses to some of the commands are given in Intel Hex format.

Note: Entering any of the commands listed above generates one of the following command response codes:

Table 9-2. Command Response Codes

Response	Meaning
0>	OK; no error
1>	No answer from remote device
2>	Cannot reach remote device or no answer
8>	Wrong parameter(s)
9>	Invalid command

10: Updating Firmware

This chapter explains how to obtain and update the unit's firmware.

Obtaining Firmware

Obtain the most up-to-date firmware and release notes for the unit from the Lantronix web site (www.lantronix.com) or by using anonymous FTP ([ftp.lantronix.com/pub](ftp://ftp.lantronix.com/pub)).

Reloading Firmware

There are several ways to update the unit's internal operational code (*ROM) via TFTP or via the serial port. You can also update the unit's internal web interface (*COB) via TFTP.

Here are typical names for those files. Check the Lantronix web site for the latest versions and release notes.

Table 10-1. Firmware Files

ROM File	COB
WBXxxx.ROM	WBXvx_x.COB (Web Manager)

Using TFTP: Graphical User Interface

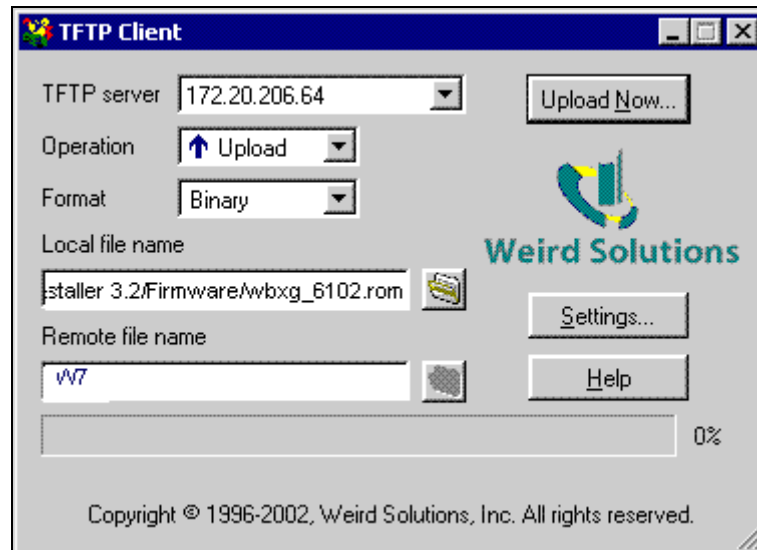
To download new firmware from a computer:

1. Use a TFTP client to send a binary file to the unit (*.ROM to upgrade the unit's internal operational code and *.COB to upgrade its internal Web interface).

Note: TFTP requires the .ROM (binary) version of the unit's internal operational code.

2. In the **TFTP server** field, enter the IP address of the unit being upgraded.
3. Select **Upload** operation and **Binary** format.
4. Enter the full path of the firmware file in the **Local file name** field.
5. In the **Remote file name** field, enter the **current** internal operational code or **WEB1** to **WEB19** for the internal Web interface.
6. Click the **Upload Now** button to transfer the file to the unit.

Figure 10-1. TFTP Window



After the firmware has been loaded and stored, which takes approximately 8 seconds, the unit performs a power reset.

Using TFTP: Command Line Interface

To download new firmware from a computer:

1. Enter the following from a TFTP command line interface:

```
tftp -i <ip address> put <local filename> <destination file name>
```

The following examples demonstrate the TFTP command sequence to download the .rom file and the .cob file:

```
tftp -i 192.168.1.111 put wbxcg_6102.rom W7
tftp -i 192.168.1.111 put wbxc_webm_1403.cob WEB1
```

2. In the **Remote file name** field, enter the current internal operational code or **WEB1** for the internal Web interface.

Network Upgrade

Use the command: `tftp -i <ip address> put <wbx rom filename> W7` or the DeviceInstaller upgrade feature. DI 4.0.0.4 and later support the **W7** destination file.

Recovering the Firmware Using the Serial Port and DeviceInstaller

If for some reason the firmware is damaged, you can recover the firmware file by using DeviceInstaller to download the *.ROM file over the serial port.

To recover firmware:

1. Connect the COM interface of your PC to serial port 1 of the WiBox 2100E device server.
2. Start DeviceInstaller. If your PC has more than one network adapter, a message displays. Select an adapter and click the **OK** button.
3. From the **Tools** menu, select **Advanced/Recover Firmware**. The Serial Port Firmware Upgrade window displays.
4. For **Port on PC**, enter the COM port on the PC that is connected to the serial port of the Lantronix unit.
5. For **Device Model**, be sure the appropriate WiBox 2100E device displays.
6. For **Firmware File**, click the **Browse** button and go to the location where the firmware file resides.
7. **Note:** Make sure the WiBox 2100E on which you are recovering firmware is connected to this selected port on your PC.
8. Click the **OK** button to download the file.
9. When prompted, reset the device. Status messages and a progress bar at the bottom of the screen show the progress of the file transfer. When the file transfer completes, the message "Successful, Click OK to Close" appears.
10. Click the **OK** button to complete this procedure.

Note: For more information, see *Recovering Firmware in the DeviceInstaller online Help*.

WLAN Country Setting

Due to regulations, the country-specific setting has been removed from the setup menu and Web Manager. However, we provide a separate utility for changing the **Country/Zone** setting. The utility is called SetZone and is included in the package. It is also available for download from the Lantronix web site.

The syntax is: SetZone <IP address> [<zone abbreviation>]

Leaving the zone blank causes the utility to report the current setting only. Following are valid zone abbreviations. These settings are consistent with IEEE802.11b/g zones:

US=United States

CA=Canada

FR=France

SP=Spain

JP=Japan

**OT=Others, such as Europe
(excluding France), Asia, Africa,
and Australia**

11: Wireless Bridging

Note: The WiBox 2100E device server with firmware version 6.2 and later will support bridging.

Bridging allows a host, connected on the WiBox 2100E's wired Ethernet interface, to be accessible over the wireless network (via the WiBox 2100E).

To initialize the bridging feature:

1. Configure the WiBox 2100E's wireless settings. See [WLAN Configuration](#).
2. Enable bridging in Setup Mode. See [Network Mode](#).
3. Set up the wired host connected to the WiBox 2100E's Ethernet port.

Configuring the WiBox 2100E in Bridging Mode

Once in bridging mode, the services on the WiBox 2100E are available only through the wired interface. There are three methods for configuring the WiBox 2100E when in bridging mode.

Method 1

This method uses the current Ethernet wired host to configure the WiBox 2100E. This requires the modification of the wired host's IP address as well as the following steps:

1. Use a utility to locate the WiBox 2100E's MAC address and IP address. This utility must use the Lantronix access protocol to query the WiBox 2100E.
2. Assign an IP address to the wired host within the same subnet as the WiBox 2100E.
3. Use the WiBox 2100E's Web Manager or Telnet to port 9999 to configure the WiBox 2100E as necessary.
4. Configure the wired host's IP address back to the original IP address configuration.

Method 2

This method requires the current wired host to be disconnected temporarily. Another device physically connects to the WiBox 2100E's wired interface for configuration.

1. Disconnect the current wired host from the WiBox 2100E and connect the device used for configuring the WiBox 2100E.
2. Reset the WiBox 2100E.
3. Use a utility to locate the WiBox 2100E's MAC address and IP address. This utility must use the Lantronix access protocol to query the WiBox 2100E.
4. Assign an IP address to the wired host within the same subnet as the WiBox 2100E.
5. Use the WiBox 2100E's Web Manager or Telnet to port 9999 to configure the WiBox 2100E as necessary.
6. Disconnect the wired device and reconnect the original wired host to the WiBox 2100E.
7. Reset the WiBox 2100E.

Method 3

As an alternative to configuring through the wired interface, connect a device through the WiBox 2100E's serial port. For more information on configuration through the serial port, see [5:Telnet or Serial Port \(Setup Mode\) Configuration](#).

12: Troubleshooting

This chapter discusses how you can diagnose and fix errors quickly without having to contact a dealer or Lantronix. It helps to connect a terminal to the serial port while diagnosing an error to view summary messages that may be displayed. When troubleshooting, always ensure that the physical connections (power cable, network cable, and serial cable) are secure.

Note: Some unexplained errors might be caused by duplicate IP addresses on the network. Make sure that your unit's IP address is unique.

Diagnostic LED States

Condition	Channel 1 Status LED
Network controller error	Blink 3x/4 seconds
Serial number storage checksum error	Blink 4x/4 seconds
Duplicate IP address present	Blink 5x/4 seconds
No DHCP response	Blink 5x/4 seconds
Setup menu active	Blink 2x/second for 2 seconds, off for 2 seconds

Problems and Error Messages

Problem/Message	Reason	Solution
Cannot establish an Infrastructure network connection to the WiBox 2100E device server.	Network Name (SSID) in the WiBox 2100E is not set or does not match the Access Point (AP).	Verify Network Name (SSID) for the WiBox 2100E and AP are the same. These are case-sensitive.
	The AP has WEP encryption enabled and the WiBox 2100E does not or WEP authentication type does not match the AP.	Enable WEP encryption in WiBox 2100E. Set encryption key and authentication type to match the AP. Ensure the key is entered in HEX notation in both the AP and the WiBox 2100E.
Cannot establish an Ad Hoc network connection to the WiBox 2100E.	Ad Hoc network is not enabled in the WiBox 2100E.	Enable Ad Hoc network. Set Ad Hoc Network Name (IBSS) to match. These are case-sensitive.

Problem/Message	Reason	Solution
<p>Note: With 6.x.x.x firmware and later, there is only one setting for Network Name; it is the same for both Infrastructure and Ad Hoc modes.</p>	Infrastructure Network Name (SSID) is set blank or different from the Ad Hoc name and the WiBox 2100E is associated to Infrastructure Network	Set the Infrastructure Network Name (SSID) to the same name as the Ad Hoc name.
	The IP address is not set or not in same subnet as other Ad Hoc PCs or the WiBox 2100E.	Verify the IP address is set and in the same subnet for each Ad Hoc device.
Cannot ping or connect to the WiBox 2100E DHCP name.	The DHCP server is not automatically setting the DHCP name in DNS on the network.	Contact the Network Administrator to add the WiBox 2100E to DNS manually.
When you issue the ARP -S command in Windows, <i>The ARP entry addition failed: 5</i> message displays.	Your user login does not have the right to use this command on this PC.	Have your IT department log you in with sufficient rights.
When you attempt to assign an IP address to the unit by the ARP method and Telnet to the device server through port 1, the connection fails.	The ARP method only creates a temporary password. When you Telnet to port 1, the connection should fail. When you Telnet into port 9999 and do not press Enter quickly, the device server reboots, causing it to lose the IP address.	Telnet back to Port 1. Wait for it to fail, then Telnet to port 9999 again. Make sure you press Enter within 5 seconds.
When you Telnet to port 9999, the <i>Press Enter to go into Setup Mode</i> message displays. However, nothing happens when you press Enter , or your connection is closed.	To enter Setup Mode via Telnet, the Enter key must be pressed within 5 seconds.	Telnet to port 9999 again and press Enter as soon as you see the <i>Press Enter to go into Setup Mode</i> message.
When you Telnet to port 1 to assign an IP address to the device server, the Telnet window does not respond for a long time.	You may have entered the Ethernet address incorrectly with the ARP command.	Confirm that the Ethernet address that you entered with the ARP command is correct. The Ethernet address must only include numbers 0-9 and letters A-F. In Windows and usually in Unix, the segments of the Ethernet address are separated by dashes. In some forms of Unix, the Ethernet address is segmented with colons.
	The IP address you are trying to assign is not on your logical subnet.	Confirm that your PC has an IP address and that it is in the same logical subnet that you are trying to assign to the device server.
	The device server may not have a network connection.	Make sure that the Link LED is lit. If the Link LED is not lit, then the device server does not have a network connection.

Problem/Message	Reason	Solution
The device server is not communicating with the serial device it is attached to.	The most likely reason is the wrong serial settings were chosen.	The serial settings for the serial device and the device server must match. The default serial settings for the device server are RS-232, 9600 baud, 8 character bits, no parity, 1 stop bit, no flow control.
When you try to enter the Setup Mode on the device server via the serial port, you get no response.	The issue is most likely something covered in the previous problem, or possibly, you have Caps Lock on.	Double-check everything in the problem above. Confirm that Caps Lock is not on.
You can ping the device server, but not Telnet to the device server on port 9999.	<p>There may be an IP address conflict on your network</p> <p>The Telnet configuration port (9999) is disabled within the device server security settings.</p>	<p>Turn the device server off and then issue the following commands at the DOS prompt of your computer:</p> <p>ARP -D X.X.X.X (X.X.X.X is the IP of the device server).</p> <p>PING X.X.X.X (X.X.X.X is the IP of the device server).</p> <p>If you get a response, then there is a duplicate IP address on the network. If you do not get a response, use the serial port to verify that Telnet is not disabled.</p>
<p>WiBox 2100E only:</p> <p>You are using the correct serial cable, and the WiBox 2100E should be set up correctly, but you are not communicating with your device attached to the WiBox 2100E across the network.</p>	<p>If you are sure that the serial cable is correct, then you may not be connecting to the correct socket of the WiBox 2100E.</p> <p>Another possibility is that the WiBox 2100E is not set up correctly to make a good socket connection to the network.</p>	<p>You can check to see whether there is a socket connection to or from the WiBox 2100E by looking at the Status LED.</p> <p>If the Status LED is blinking consistently, or is completely off, then there is a good socket connection.</p> <p>If the Status LED is solid green, then the socket connection does not exist. Use the Connect Mode option C0 for making a connection to the WiBox 2100E from the network. Use Connect Mode option C1 or C5 for a connection to the network from the WiBox 2100E</p>

Technical Support

If you are experiencing an error that is not described in this chapter, or if you are unable to fix the error, contact Technical Support.

Technical Support US

Check our online knowledge base or send a question to Technical Support at <http://www.lantronix.com/support>.

Phone: (949) 453-3990

Technical Support Europe, Middle East, and Africa

Phone: +33 (0)1 39 30 41 72

Germany: +49 (0) 180 500 13 53

Email: eu_techsupp@lantronix.com or eu_support@lantronix.com

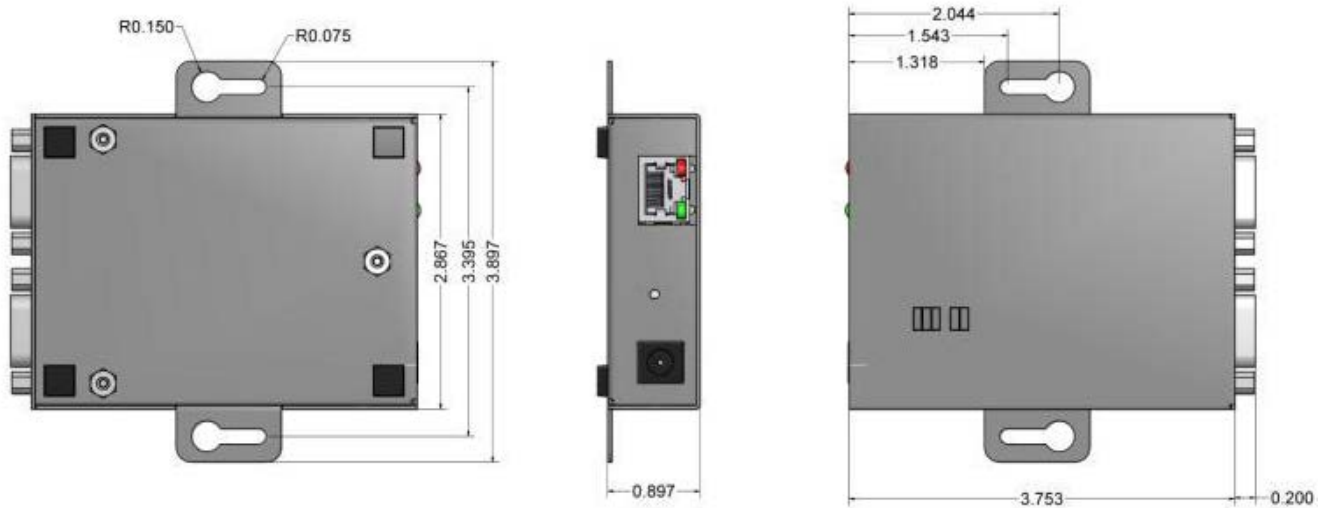
Firmware downloads, FAQs, and the most up-to-date documentation are available at www.lantronix.com/support

When you report a problem, please provide the following information:

- ◆ Your name, and your company name, address, and phone number
- ◆ Lantronix model number
- ◆ Lantronix MAC number
- ◆ Software version (on the first screen shown when you Telnet to port 9999)
- ◆ Description of the problem
- ◆ Status of the unit when the problem occurred (please try to include information on user and network activity at the time of the problem).

A: Mounting Brackets

The following drawings provide dimensions of the brackets for mounting the WiBox 2100E device server.



B: Binary to Hexadecimal Conversions

Many of the unit's configuration procedures require assembling a series of options (represented as bits) into a complete command (represented as a byte). Convert the resulting binary value to a hexadecimal representation.

Converting Binary to Hexadecimal

Following are two simple ways to convert binary numbers to hexadecimals.

Conversion Table

Hexadecimal digits have values ranging from 0 to F, which are represented as 0-9, A (for 10), B (for 11), etc. To convert a binary value (for example, 0100 1100) to a hexadecimal representation, the upper and lower four bits are treated separately, resulting in a two-digit hexadecimal number (in this case, 4C). Use the following table to convert values from binary to hexadecimal.

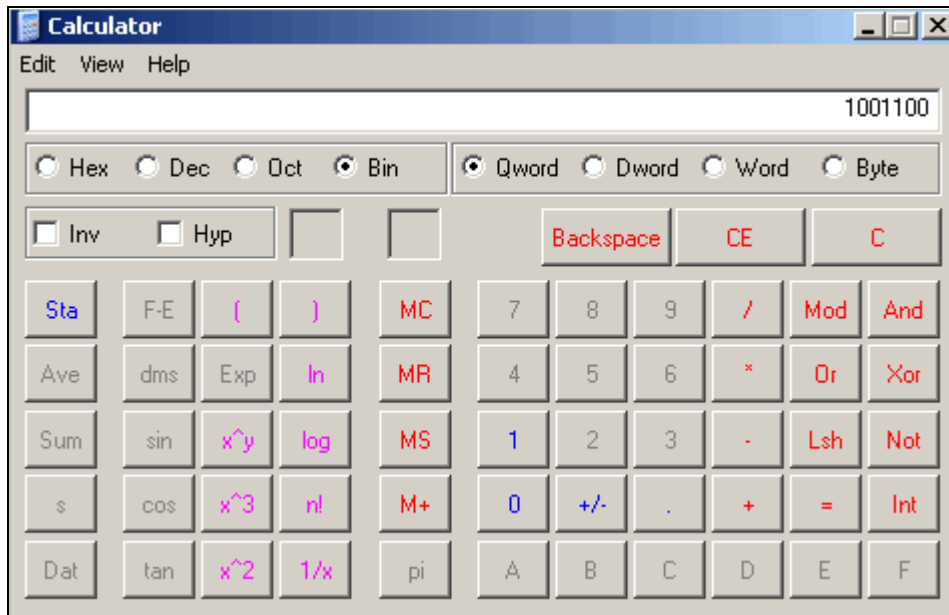
Decimal	Binary	Hex
0	0000	0
1	0001	1
2	0010	2
3	0011	3
4	0100	4
5	0101	5
6	0110	6
7	0111	7
8	1000	8
9	1001	9
10	1010	A
11	1011	B
12	1100	C
13	1101	D
14	1110	E
15	1111	F

Scientific Calculator

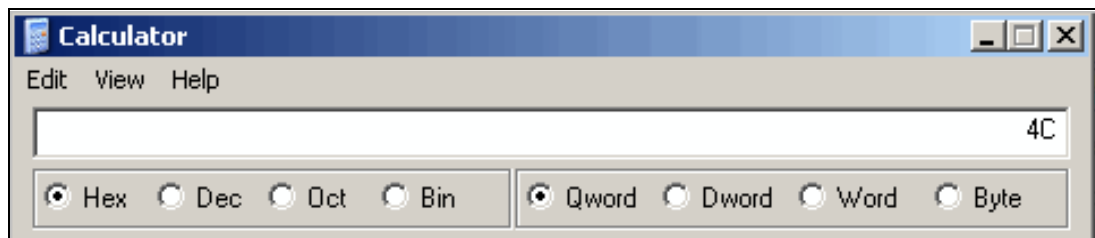
Another simple way to convert binary to hexadecimals is to use a scientific calculator, such as the one available on Windows' operating systems. For example:

1. On the Windows' Start menu, click **Programs**→**Accessories**→**Calculator**.
2. On the **View** menu, select **Scientific**. The scientific calculator displays.

3. Click **Bin** (Binary), and type the number to convert.



4. Click **Hex**. The hexadecimal value displays.



C: Compliance

Compliance Information

Manufacturer's Name & Address:

Lantronix, Inc. at 167 Technology, Irvine, CA 92618 USA

Declares that the following product:

Product Name: WiBox® Device Server **Model:** WBX2100E

Conforms to the following standards or other normative documents:

Safety:

UL 60950-1

CAN/CSA-C22.2 No. 60950-1-03

EN 60950-1:2001, Low Voltage Directive (73/23/EEC)

EMC & Radio:

CFR Title 47 FCC Part 15, Subpart B and C, Class B

Industry Canada ICES-003 Issue 4 (2004), Class B

Industry Canada RSS-Gen Issue 1 (2005)

Industry Canada RSS-210 Issue 6 (2005)

EN 301 489-1 v1.4.1 (2002-08), EMC Directive (1999/5/EC)

EN 301 489-17 v.1.2.1 (2002-08), EMC Directive (1999/5/EC)

EN 300 328 v1.6.1 (2004-11), R&TTE Directive (1999/5/EC)*

Australia / New Zealand AS/NZS CISPR 22 (2006), Class B

AS/NZS 4771 (2000 + A1:2003) (radio)

Japan VCCI (EMC emissions) V-3/2006-04

EN55022: 1998 + A1: 2000 + A2: 2003

EN55024: 1998 + A1: 2001 + A2: 2003

EN61000-3-2: 2000 + A2: 2005

EN61000-3-3: 1995 + A1: 2001

***Note:** All tests were performed under normal test conditions. The equipment tested is similar to a model that was tested previously at extreme test conditions; therefore, testing at extreme conditions was not performed.

All EMI and radio tests were performed at room temperatures.

RoHS Notice

All Lantronix products in the following families are China RoHS-compliant and free of the following hazardous substances and elements:

- Lead (Pb)
- Mercury (Hg)
- Polybrominated biphenyls (PBB)
- Cadmium (Cd)
- Hexavalent Chromium (Cr (VI))
- Polybrominated diphenyl ethers (PBDE)

Product Family Name	Toxic or hazardous Substances and Elements					
	Lead (Pb)	Mercury (Hg)	Cadmium (Cd)	Hexavalent Chromium (Cr (VI))	Polybrominated biphenyls (PBB)	Polybrominated diphenyl ethers (PBDE)
UDS1100 and 2100	0	0	0	0	0	0
EDS	0	0	0	0	0	0
MSS100	0	0	0	0	0	0
IntelliBox	0	0	0	0	0	0
XPress DR & XPress-DR+	0	0	0	0	0	0
SecureBox 1101 & 2101	0	0	0	0	0	0
WiBox 2100E	0	0	0	0	0	0
UBox	0	0	0	0	0	0
MatchPort	0	0	0	0	0	0
SLC	0	0	0	0	0	0
XPort	0	0	0	0	0	0
WiBox	0	0	0	0	0	0
SLB	0	0	0	0	0	0
SLP	0	0	0	0	0	0
SCS	0	0	0	0	0	0
SLS	0	0	0	0	0	0
DSC	0	0	0	0	0	0

O: toxic or hazardous substance contained in all of the homogeneous materials for this part is below the limit requirement in SJ/T11363-2006.

X: toxic or hazardous substance contained in at least one of the homogeneous materials used for this part is above the limit requirement in SJ/T11363-2006.

Manufacturer Contact:

Lantronix, Inc.

167 Technology, Irvine, CA 92618 USA

Tel: 949-453-3990

Fax: 949-453-3995

Regulatory Information

USA Federal Communications Commission (FCC) Notice

This device complies with part 15 of the FCC Rules. Operation is subject to the following two conditions:

This device may not cause harmful interference, and

This device must accept any interference received, including interference that may cause undesired operation.

Caution: Changes or modifications to this product not expressly approved by Lantronix could void the user's authority to operate this equipment.

Note: This equipment has been tested and found to comply with the limits for a Class B digital device, pursuant to part 15 of the FCC Rules. These limits are designed to provide reasonable protection against harmful interference in a residential installation. This equipment generates, uses, and can radiate radio frequency energy and, if not installed and used in accordance with the instructions, may cause harmful interference to radio communications. However, there is no guarantee that interference will not occur in a particular installation.

If this equipment does cause harmful interference to radio or television reception, which can be determined by turning the equipment off and on, the user is encouraged to try to correct the interference by one or more of the following measures:

- ◆ Reorient or relocate the receiving antenna.
- ◆ Increase the separation between the equipment and receiver.
- ◆ Connect the equipment into an outlet on a circuit different from that to which the receiver is connected.
- ◆ Consult the dealer or an experienced radio/TV technician for help.

Caution: *Exposure to Radio Frequency Radiation*

*The equipment contains transmitter with FCC ID: **R68WIBOXG**.*

The antenna(s) used for this transmitter must be installed to provide a separation distance of at least 20 cm from all persons and must not be co-located or operating in conjunction with any other antenna or transmitter. Installers and end-users must be provided with antenna installation instructions and transmitter operating conditions for satisfying RF exposure compliance.

Canada – Industry Canada Notice

This device complies with Industry Canada RSS-210 regulations (**IC: 3867A-WIBOXG**). Operation is subject to the following two conditions:

- ◆ This device may not cause interference, and
- ◆ This device must accept any interference, including interference that may cause undesired operation of the device.

To prevent radio interference to the licensed service, this device must be operated indoors only and should be kept away from windows to provide maximum shielding.

This Class B digital apparatus complies with Canadian ICES-003.” Cet appareil numérique de la classe Best conforme à la norme NMB- 003 du Canada.

Antenna Notice:

This device has been designed to operate with an antenna having a maximum gain of 3 dBi. Antenna having a higher gain is strictly prohibited per regulations of Industry Canada. The required antenna impedance is 50 ohms.

To reduce potential radio interference to other users, the antenna type and its gain should be so chosen that the equivalent isotropically radiated power (EIRP) is not more than that required for successful communication.

Exposure of Humans to RF Fields

The installer of this radio equipment must ensure that the antenna is located or pointed such that it does not emit RF field in excess of Health Canada limits for the general population; consult Safety Code 6, obtainable from Health Canada’s website: www.hc-sc.gc.ca/rpb

Europe – R&TTE Directive 99/5/EC, Wireless Notice

This product is designated as a Class 2 type radio device that utilizes non-harmonized frequencies and power levels for Europe. It is marked with the following warning symbol to bring to your attention to the fact it might not be legal to use this product in every country. In most cases this product has already been granted permission for use from individual countries in Europe. If you are unsure, please contact the communications authority for the country to be operated in.



In addition to this notice, the following countries in Europe have certain restrictions on the operation of 2.4 GHz WLAN type devices:

Country	Restriction
France	Outdoor use is limited to 10mW E.I.R.P within the frequency band 2454-2483.5 MHz.
Italy	If used outside of own premises, general authorization is required
Luxembourg	General authorization required for public service.
Romania	Individual license is required.

Australia & New Zealand – Wireless Notice

This product has been found to be compliant with the wireless regulatory requirements for Australia and New Zealand and is designated to have met Compliance Level 2.

The compliance mark is designated with the circle and check mark inside is called the “C-Tick” mark. This C-Tick mark label is located underneath this product and signifies its compliance, as shown below:



ACN 095 223 484

The number “ ACN 095 223 484 “ stands for Australian Company Number and the 9 digit number designates the local representative in Australia who can take inquiries regarding this product’s compliance status. The following contact address is found below:

Lantronix Australia Pty. Ltd.
 c/o LLK Chartered Accountants
 Suite 2, Level 7
 122 Walker Street
 North Sydney, NSW 2060
 Australia