

# MXi1002U 2-WAY COMBINER

## CONTENTS

1	2-WAY COMBINER.....	1
---	---------------------	---

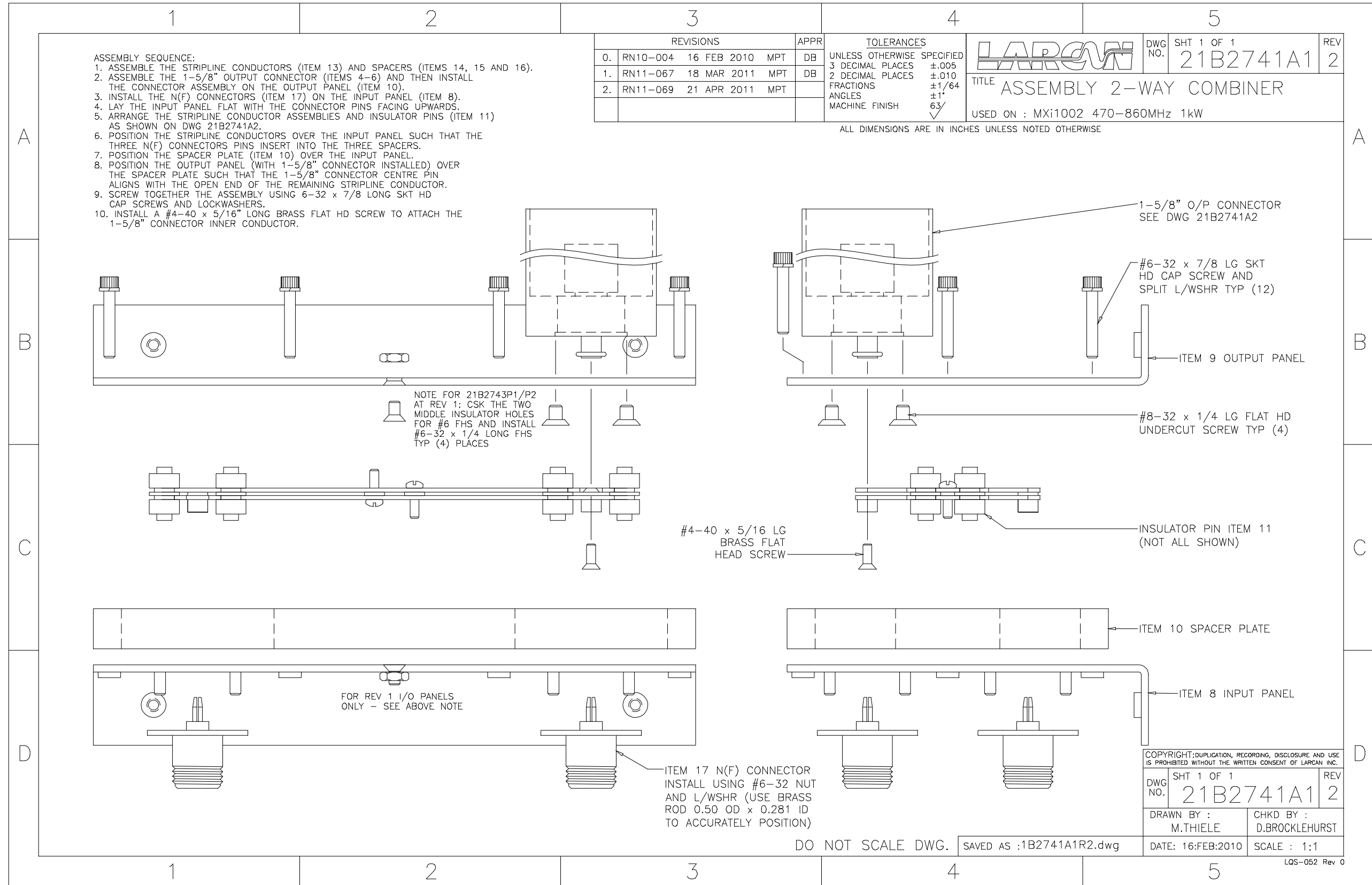
## FIGURES

FIGURE 1	21B2741A1 MXi1002 2-WAY COMBINER ASSEMBLY SHEET 1 .....	2
FIGURE 2	21B2741A2 MXi1002 2-WAY COMBINER ASSEMBLY SHEET 2 .....	3

## **MXi1002U 2-WAY COMBINER**

### **1 2-WAY COMBINER**

The combiner module consists of a single 3dB quadrature hybrid coupler that combines the power at the two input ports. If there is a level difference between INPUT 1 and INPUT 2, then a portion of the difference is directed to the REJECT port. A air cooled 50 ohm termination connected to the REJECT port absorbs this difference power. If either of the inputs to the combiner module is shut down, then a maximum of 250W of reject power will be absorbed by the load on the REJECT port. The other half of the input power is directed to the output connector. The phase of the signals arriving at each input port 90 degrees out of phase as controlled by the 2 way splitter assembly located in the main controller inside the power supply chassis



**Figure 1 21B2741A1 MXi1002 2-Way Combiner Assembly Sheet 1**

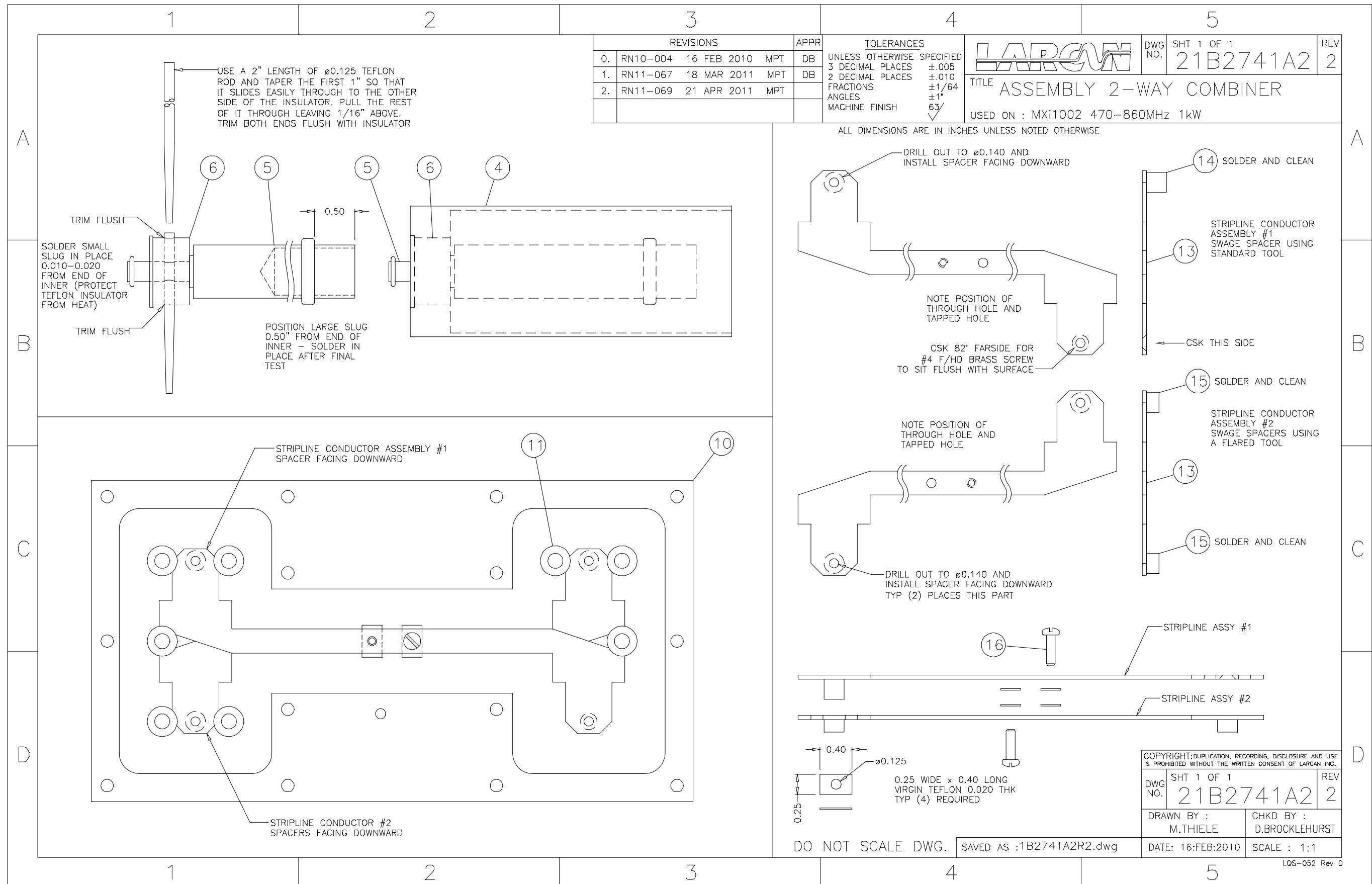


Figure 2 21B2741A2 MXi1002 2-Way Combiner Assembly Sheet 2

