

45mm

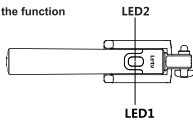
How to connect via Bluetooth

Step 1.
Press the button for 3 seconds and the LED indicator will glow blue, indicating that the selfie stick is powered on. When the indicator flashes blue, the device is in the Bluetooth pairing mode (if it has never been connected) Reconnecting mode (auto connecting to a paired device in 5 seconds)

Step 2.
Turn on Bluetooth on the phone, search for "letv-zpg", and tap it to auto pair and connect. When connected, the indicator on the selfie stick will glow blue, and the photo-taking mode is ready to use

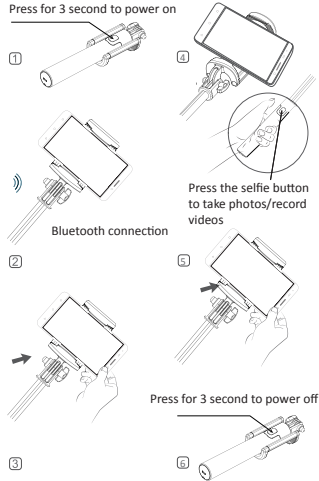
Step 3.
Place the phone into the bracket, launch Camera on the phone, and press the selfie button to take photos/record videos

LED and the function



- LED1 Charge indicator**
(The indicator glows red during charging and goes off when fully charged)
- LED2 bluetooth matching**
(The indicator glows blue when powered on and flashes blue when pairing)

How to use the Letv selfie stick



Letv

85mm

Selfie Stick User Guide

(Please read carefully before use)

LeUBP-201E

正面 157g双铜纸

Product

Weight: 173g Extended length: 66cm
Materials: aluminum, plastic
Packing dimensions: 213x61x41mm

In the Box: selfie stick x1 lanyard x1
user manual x1 3R warranty certificate x1
data cable x1

Battery

Capacity:	65mAh	Standby time:	3 days
Working time:	30H	Charging voltage:	5V
Input current:	300MA-2A	Charging time:	1.5H
Charge cycles:	≥ 300		

Notes

1. Store and use the product in normal temperature.
2. Do not expose this product to rain and water or use in a wet environment.
3. Do not throw the product to avoid damage.
4. Do not use chemical solvents to coat or wipe the product.
5. The maximum weight capacity of the phone bracket and connecting rod is 1kg.
6. Do not use the selfie stick where you are not prohibited.
7. Check it in as luggage when taking a flight.

Kind notice: If the Letv selfie stick is not connected to a phone 10 minutes after it is powered on, the indicator will go off and the selfie stick will go into the hibernation mode. In the photo-taking mode, the indicator will go off and the selfie stick will go into the hibernation mode if idle for 24 hours. If the connected phone goes out of range (10m in testing environment), the selfie stick will go into the hibernation mode. You can wake it up by pressing the selfie button.

The statements should be displayed in the user manual: changes or modifications not expressly approved by the party responsible for compliance could void the user's authority to operate the equipment.

This device complies with Part 15 of the FCC Rules. Operation is subject to the following two conditions: (1) this device may not cause harmful interference, and (2) this device must accept any interference received, including interference that may cause undesired operation.

This equipment has been tested and found to comply with the limits for a Class B digital device, pursuant to Part 15 of the FCC Rules. These limits are designed to provide reasonable protection against harmful interference in a residential installation. This equipment generates, uses and can radiate radio frequency energy and, if not installed and used in accordance with the instructions, may cause harmful interference to radio communications. However, there is no guarantee that interference will not occur in a particular installation.

If this equipment does cause harmful interference to radio or television reception, which can be determined by turning the equipment off and on, the user is encouraged to try to correct the interference by one or more of the following measures:

- Reorient or relocate the receiving antenna.
- Increase the separation between the equipment and receiver.
- Connect the equipment into an outlet on a circuit different from that to which the receiver is connected.
- Consult the dealer or an experienced radio/TV technician for help.

正面 157g双铜纸