



Wireless CarePhone 3681

User Manual

# Contents

<b>Package Contents</b>	<b>5</b>
<b>Introduction</b>	<b>7</b>
<b>Connection</b>	<b>9</b>
<b>System Requirements</b>	<b>12</b>
<b>Installation</b>	<b>13</b>
<b>Restore Default</b>	<b>20</b>
<b>System Management</b>	<b>21</b>
Login	21
Download the ActiveX Control	22
Overview	23
System	24
System	24
SIP25	
APS	26
Others	27
DIDO	28
Surveillance Password	29
Network	30
IP	30
FTP	31
SMTP	32
DDNS	33
RTP Port	34
Wireless	35
Instructions	35
The way to reach a CarePhone	1
Camera2	
Camera Settings	2
Encode Type	3
Call To	4
User Management	6
System Info	7
System Log	8
<b>Firmware Upgrade</b>	<b>9</b>
<b>Using Leadtek SoftPhone</b>	<b>10</b>
Login	10
Main Screen	11
Detailed Operations	12
Dialing a number	12
Calls Log	14
Dial Out from Contacts	16
Edit Contacts	17
Add New Contacts	18
Display by Contact	21
New Group	22
Display by Group	23
Edit Contacts	24
Delete Contacts	26
SoftPhone Settings	27
SIP Settings	27
General Settings	28
Phone	29
About	30

Video Surveillance with SoftPhone	31
Connecting CarePhone	31
Connect to PTZ Camera	33
Opening Recorded Video / Snapshot Records	35

## Frequently Asked Questions 36

1. General Questions	36
Q: How do I install Wireless CarePhone?	36
Q: What browsers can be used to login Wireless CarePhone? And on what operation systems?	36
Q: Why hasn't the login screen appeared after a long time?	36
Q: Why am I asked to download ActiveX control when I login?	36
Q: How do I check the version number of Wireless CarePhone ?	36
Q: How do I update the Firmware of Wireless CarePhone?	37
Q: How do I know whether Windows Firewall is On or Off?	37
Q: How do I configure SIP parameters ?	37
Q: How do I configure the Call Out function of Wireless CarePhone?	37
Q: How can I tell if Wireless CarePhone has registered with the SIP server from the indicators?	37
Q: How can I tell if Wireless CarePhone is communicating well from the indicators?	37
2. Client Questions	37
Q: Why are there error messages during the installation of SoftPhone?	37
Q: Why can't I start SoftPhone?	38
Q: Do I have to remove the older version of SoftPhone before installing the newer version?	38
Q: Why do I hear my own voice when I talk?	38
Q: Why can't others hear my voice, or my voice volume is low?	38
Q: Why can't I see my own image after connected?	40
Q: Why can I only see my own image but not the other party?	40
3. System Management Problems	40
Q: How can I manage Wireless CarePhone?	40
Q: What are the requirements of the operating system and the computer hardware?	40
4. Operation Problems	41
Q: What protocols does SoftPhone support?	41
Q: Can users in the Intranet and in the Internet call each other?	41
Q: What ports of the firewall have to be opened?	41

## Warning 42

No part of this document may be copied or reproduced in any form or by any means without the prior written consent of Leadtek Research Inc.

Leadtek makes no warranties with respect to this documentation and disclaims any implied warranties of merchantability, quality, or fitness for any particular purpose. The information in this document is subject to change without notice. Leadtek reserves the right to make revisions to this publication without obligation to notify any person or entity of any such changes.

Trademarks or brand names mentioned herein are trademarks or registered trademarks of their respective owners. Copyright 2006 Leadtek Research Inc. All rights reserved

#### **International Headquarters**

18th Fl., 166, Chien-Yi Rd., Chung Ho, Taipei Hsien, Taiwan (235)  
Phone: +886 (0)2 8226 5800 Fax: +886 (0)2 8226 5801  
<http://www.leadtek.com.tw>

For business

[sales\\_ipcam@leadtek.com](mailto:sales_ipcam@leadtek.com)

For Technical Services

[service\\_ipcam@leadtek.com](mailto:service_ipcam@leadtek.com)

Please also visit the following link for the latest news about our video surveillance products.

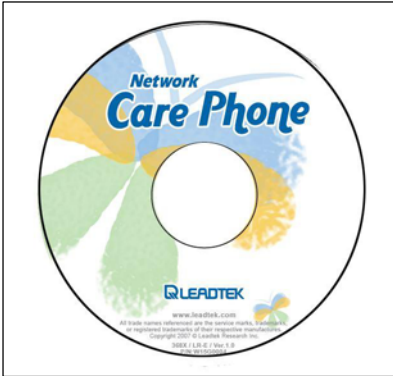
<http://www.leadtek.com.tw/eng/>

# Package Contents

Wireless CarePhone



Accessories  
Software CD :



RJ45 Ethernet Cable :



Power Adapter





Please unpack the product package with caution; inspect the Items closely. If you find any damaged item, please contact your local distributor immediately. Also, please keep the box and packing material for future use in the event of future shipments.

# Introduction

Wireless CarePhone allows you to view live video over internet. Your control center can be set up anywhere with internet access without being restricted by locations. Surveillance video is processed by the most up-to date compression technology and transmitted in MPEG-4 compression format, whose transmission efficiency and video quality remain uncompromised by the network, minimizing the lagging of live surveillance video. In addition, wireless LAN is also supported. The wireless model makes the network usage more handy without the hassle of cable installation.

## ■ Great usability in every surveillance aspect

The ease of use from Wireless CarePhone begins with its web-based user interface, using Microsoft Internet Explorer to browse the live video. Leadtek SoftPhone, a software telephone application developed by Leadtek, is also included, which offers many additional functions, such as remote surveillance, 2-way audiovisual conversation, and auto answer.

## ■ Unparalleled surveillance functions where nothing slips through your watch

The motion detection function of Wireless CarePhone sends out the alarm when any movement of any object occurring on the scene is detected, which makes it ideal for home and after-hour facility security. The alerts will be sent to the client of Leadtek SoftPhone through Internet.

You can also program Wireless CarePhone to take pictures or record video when the alarm is triggered by events. These pictures and video clips can be transmitted by FTP or email. Event recording is done by a client PC on the network as Wireless CarePhone sends snapshot in JPEG format as part of the responses to the triggered event. Leadtek NetCam performs as a central control station on a client PC that controls, manages, and monitors up to 9 network surveillance camera server units over the network at the same time (note1). You can talk to your surveillance camera just by a click on the managed camera to start 2-way audio conversation. The flexible and diversified Leadtek NetCam offers you handy surveillance solution on Windows platform.

Note1: If you need the centralized management software, you have to download Leadtek NetCam.

### [NetCam download location]

Please visit the link from Leadtek website

<http://www.leadtek.com.tw> → Remote Video Surveillance →>IP Camera → CarePhone to download the latest version of NetCam.

# Wireless CarePhone Features

## ■ Wireless CarePhone main feature list

- ✓ Compact color CMOS 1.3 mega pixel camera
- ✓ MPEG-4 / H.263 video and G.711 audio compression
- ✓ Internet connection compatible with Ethernet
- ✓ Support audiovisual transmission and recording
- ✓ Built-in Web server for remote surveillance over network
- ✓ Built-in microphone for a independently function network IPCAM , it can transfer video/audio without any computers around .
- ✓ A panic button can help calling back to the received side and start to have the video transmission .
- ✓ The environmental image lightness , contrast , HUE and saturation can be adjusted via web control .
- ✓ Includes Leadtek SoftPhone 2-way instant communication software for you to remotely talk with your family.
- ✓ A client viewer is able to simultaneously access multiple cameras located at different sites (Note: You have to download Leadtek NetCam software for this function)

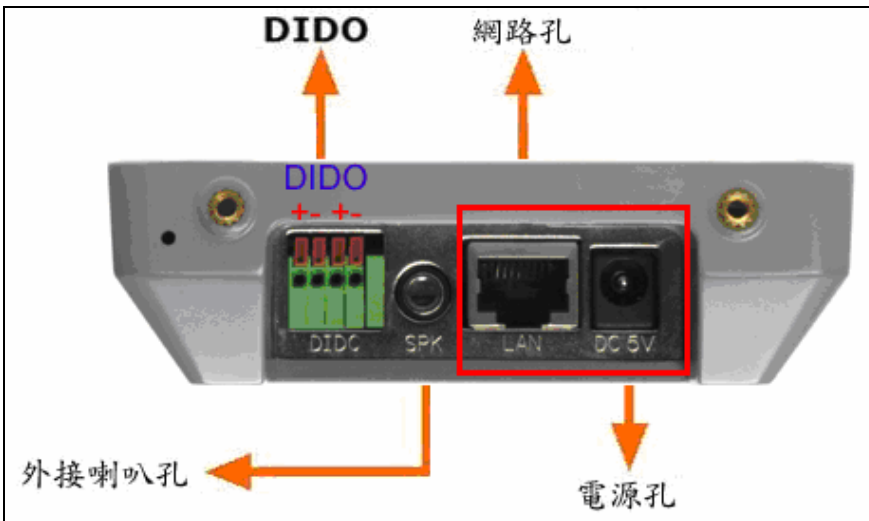
## ■ Wireless CarePhone user scenarios



Note: Leadtek SoftPhone can work with Wireless CarePhone or WinFast iCAM to achieve two-way audiovisual communication.



# Connection



Wireless CarePhone has a DI / DO interface and a monochrome microphone and speaker which are compatible with PC.

Please connect the power adapter to the DC 5V connector, and connect the Ethernet cable to the LAN connector of Wireless CarePhone. (Please see the next chapter for details.)

### ■ LED indicator

There are three LED indicators on Wireless CarePhone. They can tell users the current status of the product.



Network LED: Blue  
System1 LED: Yellow  
System2 LED: Yellow

State	LED Indicator
Network connection broken or unable to connect	OFF
Network connection normal	ON

State	Ring tone	LED
IDLE ( URL has been assigned ; the LED state will take effect after restated )	None	System1 ON System 2 OFF
Busy / Talking	None	System1 Flash

(under 2-way audio transmission)		System2 Flash
URI Not Available	Yes(busy tone)	System1 ON System2 Blinking
URI Not Defined	None	System1 / System 2 blink at the same time
Calling out	Yes(ring-back tone but wait for the response )	System1 Blinking System2 OFF
APS / While downloading	No	System1 Flash rapidly System2 Flash rapidly
APS / Download complete	No	Network ON System1 OFF System2 OFF

■ DIDO connector

Wireless CarePhone has a DI / DO interface, and a monochrome microphone and speaker which are compatible with PC. From left to right: the first pin hole is DI connector, and the second pin hole is DO connector.

Please notice the polarity of DI devices. (+ : the left pin hole. - : the second pin hole from left. These two are DI connectors). You don't have to care the polarity of DO devices, as there is a relay (from the right) between these two pin holes. The specifications of DI devices are as follows. Carefully connect custom-made DIDO devices, and make sure the devices will not overload the DIDO interface of the surveillance camera.

DI : 0 ~ 12V (including 5V logic trigger) / 20 mA (minimum)  
DO : 30VDC / 1A



◆ DI Connection Instructions

DI+ Connect to the signal output of the external device

12V is regarded as a logic high state. The device will detect an external DI signal input. In normal cases please connect to 0V.

DI- Connect to the Ground of the external device

◆ DO Connection Instructions

DO output is a RELAY connector

DO+ is RELAY COMMON

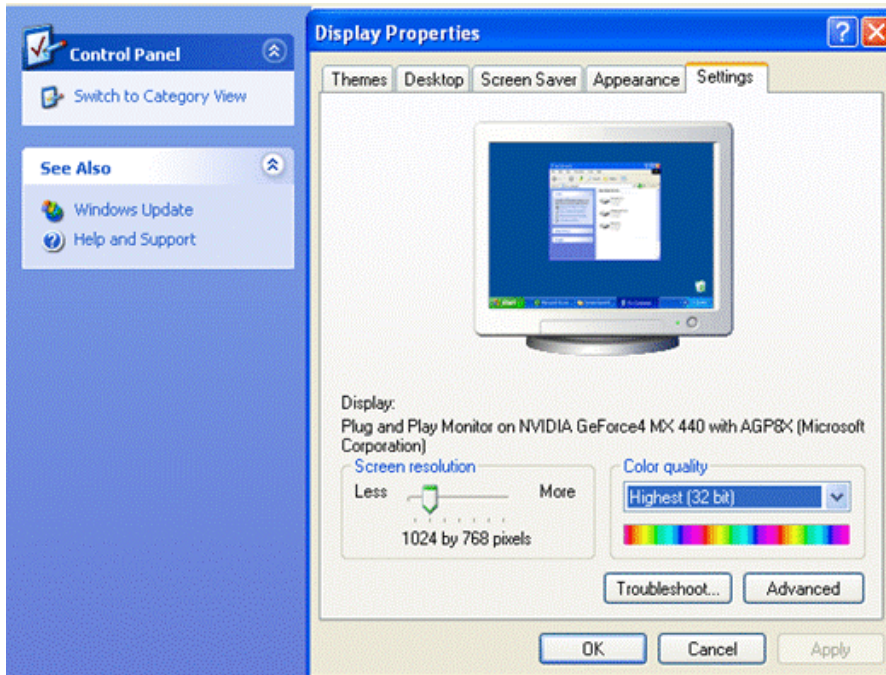
DO- is RELAY NORMAL OPEN

Note: The highest voltage/current of the RELAY is 30VDC/1A or 125VAC/0.5A.

# System Requirements

Before using this product, please check if your computer meets the following requirements.

- Windows XP with Service Pack 2 and DirectX 9.0
- Optimal screen resolution: 1024x768
- Color quality: True Color (32 bit)



# Installation

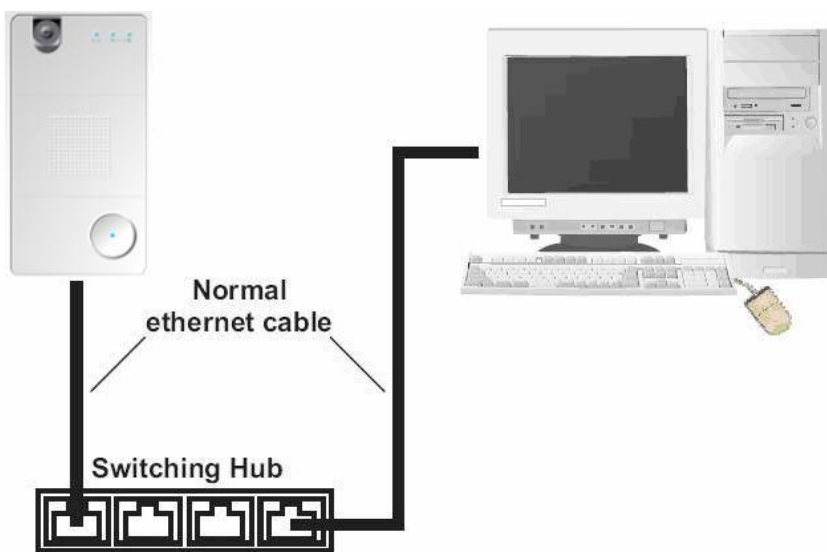
Please follow the steps below to install and test Wireless CarePhone . For easy reading and take replace of the complete name - Wireless CarePhone , from here below , **【Product】** will be its shorten name to describe .

1. Before the installation:

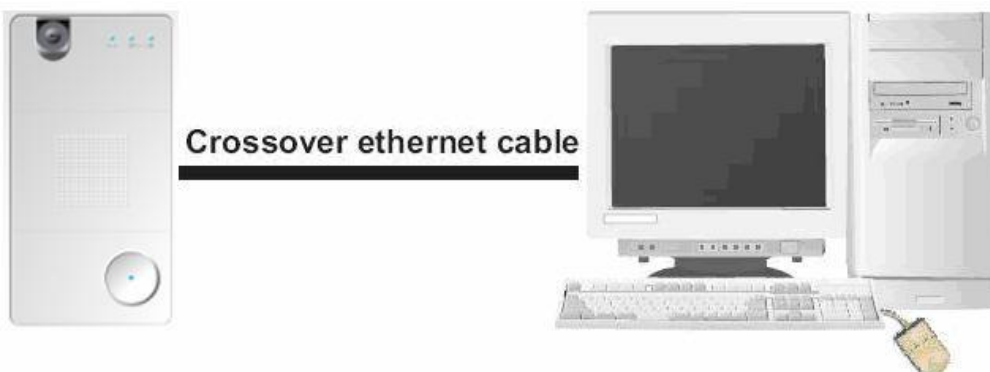
Before connecting DC5V power adapter, please connect the **【Product】** and the computer to a hub with RJ45 Ethernet cables.

The following two types of connections work with the setting of the **【Product】** .

Connect the **【Product】** and the computer to a switching hub with Ethernet cables . An Ethernet cable is included in the package.



Use a cross-over RJ45 Ethernet cable to connect the **【Product】** and the computer.

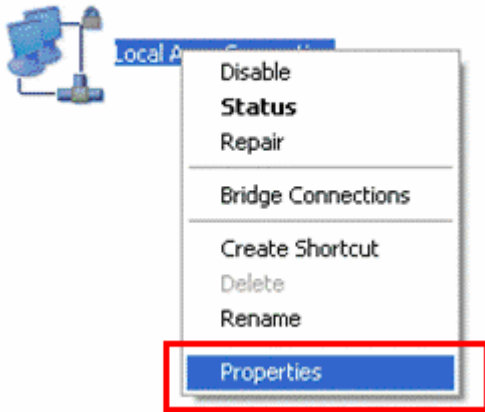


2. Connect your computer and the **【Product】** in the same subnet.

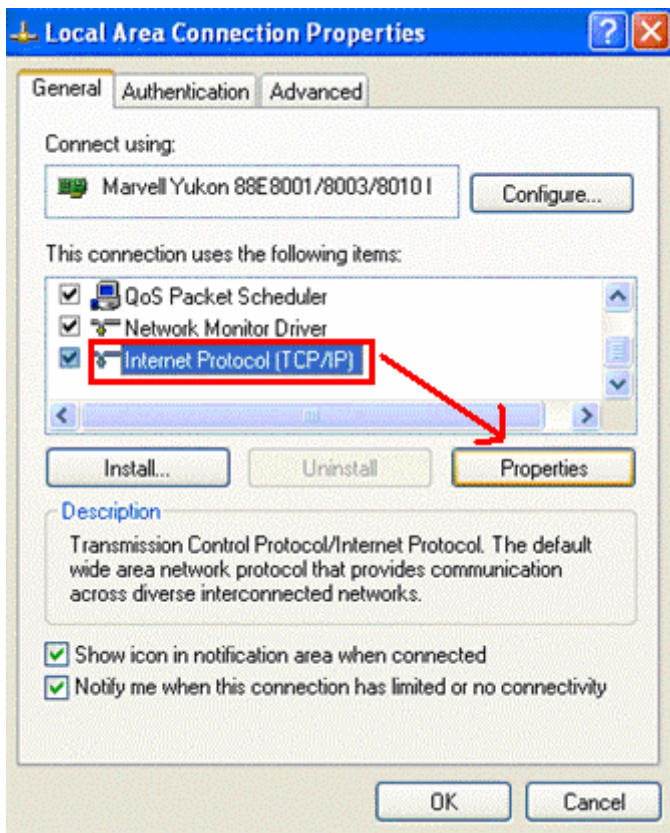
The **【Product】** default IP is 192.168.0.100. You have to configure the network settings of the computer first.

Click Windows Control Panel → Network Connection → Local Area Connection, right-click on the icon and choose Properties.

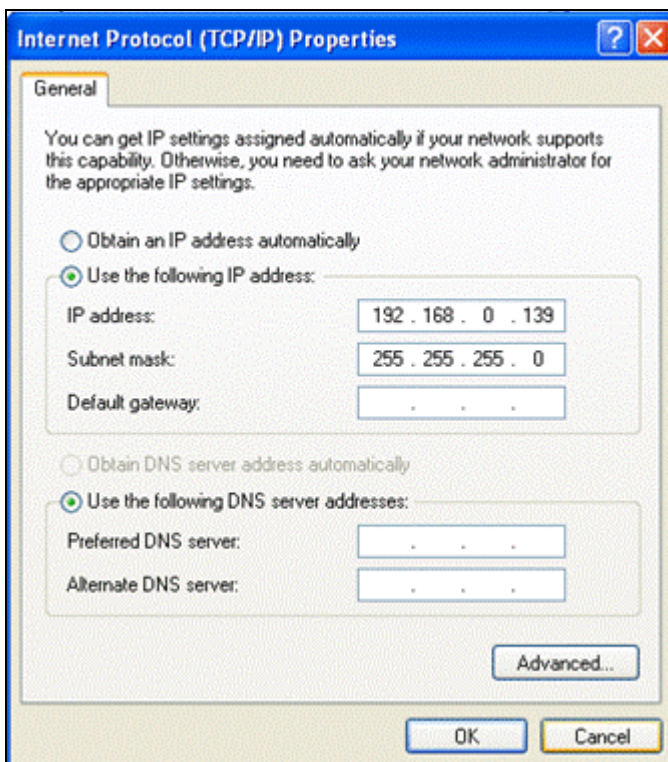
LAN or High-Speed Internet



Choose Internet Protocol (TCP/IP), and click Properties.



Choose *Use the following IP address*, and type 192.168.0.139 as IP address. The Subnet mask is 255.255.255.0, and click OK.



Note: The IP address here is for reference only. You can set different IP addresses if you know how they work.

Check the connection status of **【Product】**. Follow the steps below:

a) **Start** → **Programs** → **Accessories** → **Command Prompt**, A command prompt will appear as the picture below.

```
Command Prompt
Windows IP Configuration

Ethernet adapter Local Area Connection:

    Connection-specific DNS Suffix  . : 
    IP Address . . . . . : 192.168.0.139
    Subnet Mask . . . . . : 255.255.255.0
    Default Gateway . . . . . : 

C:\Documents and Settings\Fred>ping 192.168.0.100

Pinging 192.168.0.100 with 32 bytes of data:
Reply from 192.168.0.100: bytes=32 time<1ms TTL=64
Reply from 192.168.0.100: bytes=32 time<1ms TTL=64
Reply from 192.168.0.100: bytes=32 time<1ms TTL=64
Reply from 192.168.0.100: bytes=32 time<1ms TTL=64

Ping statistics for 192.168.0.100:
    Packets: Sent = 4, Received = 4, Lost = 0 (0% loss),
    Approximate round trip times in milli-seconds:
        Minimum = 0ms, Maximum = 0ms, Average = 0ms

C:\Documents and Settings\Fred>
```

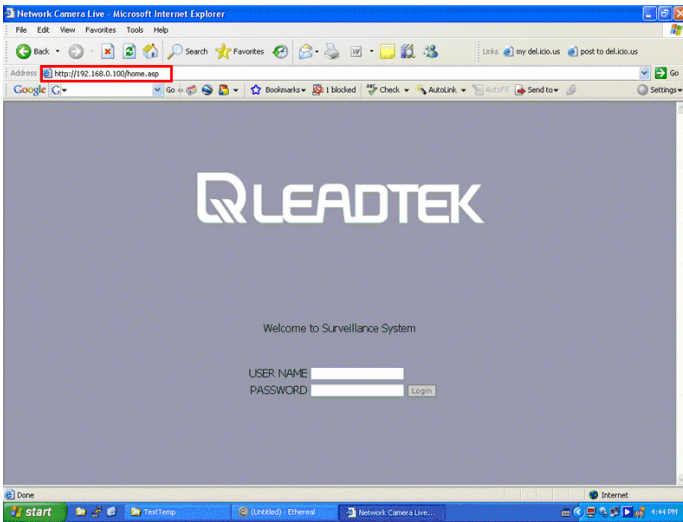
b) Type **ipconfig** and press Enter.

c) Check if the settings of the local PC are the same with before.

d) Make sure the response in c) is normal, type **ping 192.168.0.100**, and press Enter. If the messages **Reply from 192.168.0.100...** appear on the screen, it means the product is properly connected to the computer.

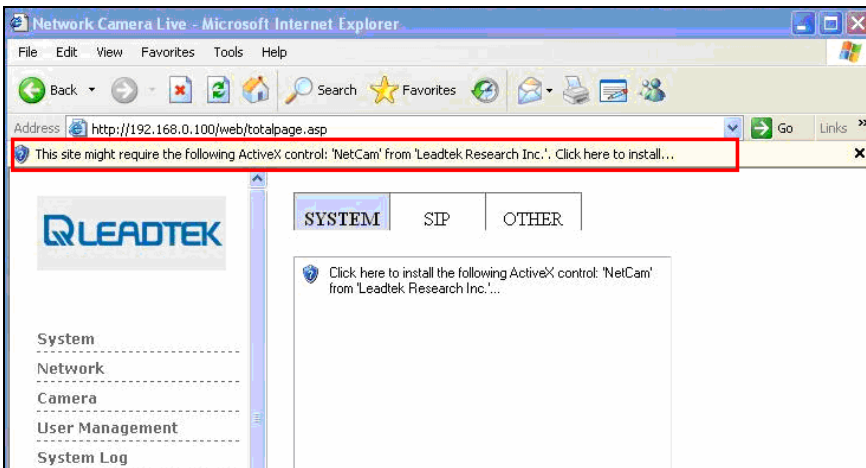
3. Use IE browser to configure the **【Product】**.

Launch Internet Explorer, type <http://192.168.0.100> in the address bar and press Enter. The home page will show up as the picture below.



The default username/ password is **admin / admin**. After login, you will see the image, and the version number will be displayed at the lower left corner.

When you use the system for the first time, IE will ask the user to download ActiveX control, a codec plug-in. Please notice the messages below the address bar of the browser. Click the message to allow ActiveX control to be installed.



Click **Install** to install the plug-in. When the installation is completed, the real-time image will be displayed in the browser.

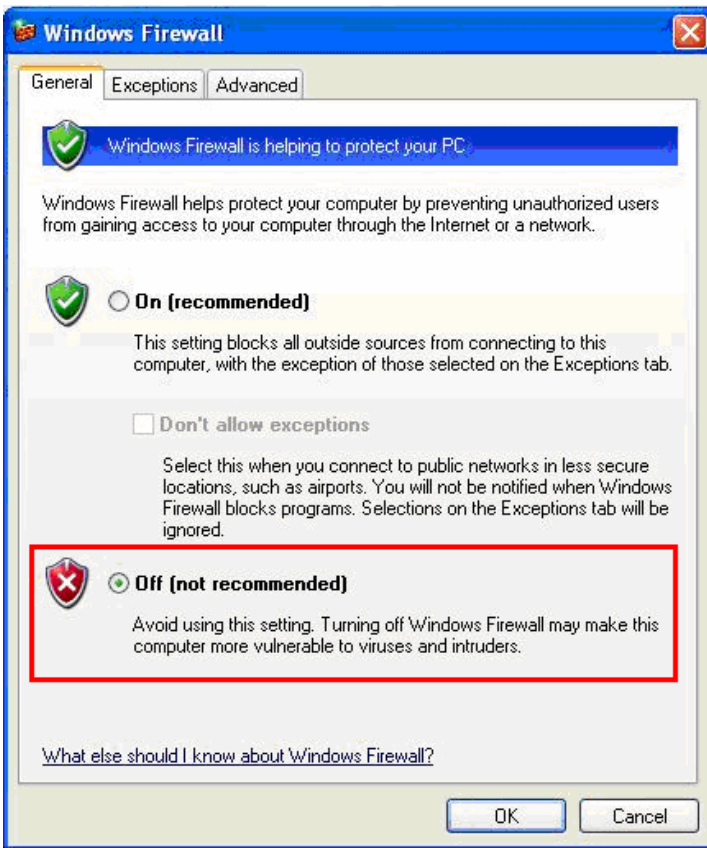




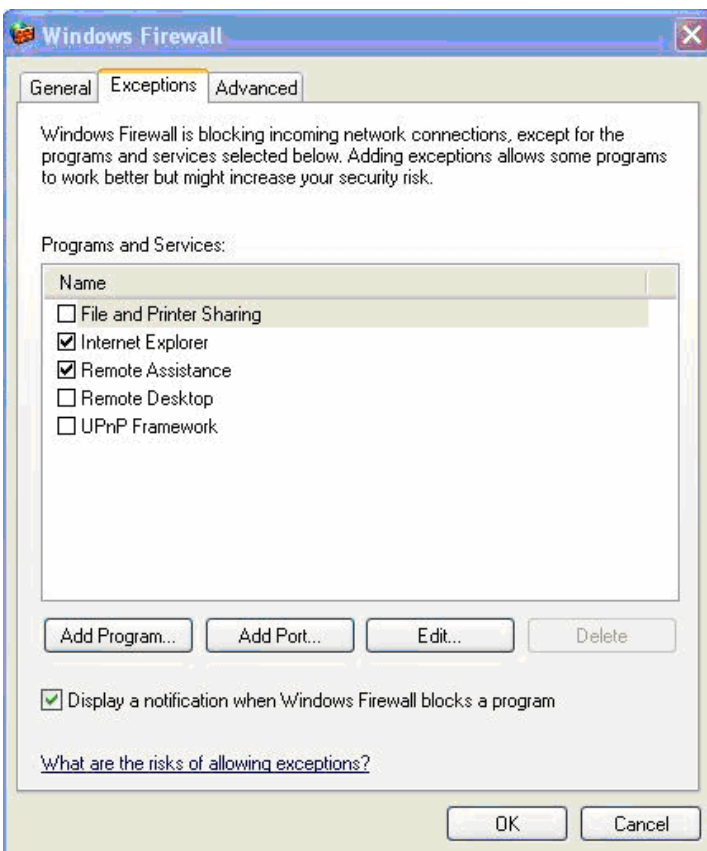
Note: In some cases, your computer will start the firewall and displays a security alert. Click **Unblock** to allow the packets.



If you want to close Windows Firewall, you can go to **Control Panel → Windows Firewall → General** and disable Windows Firewall, allowing your computer to accept packets (audio and video media packets) from different ports.



Or you can use Advanced settings and allow specific applications to disable the firewall.



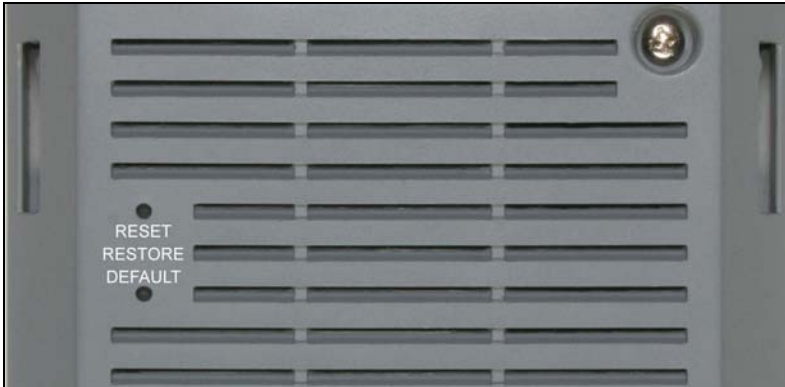
You can check the firewall options of your current network connection. If there is a lock symbol in the Connection icon, it means the network interface is protected by Windows Firewall.



# Restore Default

You can find two pin holes on the back of Wireless CarePhone. One is used to restore default, and the other is used to reset.

The Restore Default can be used to restore Wireless CarePhone to factory default settings. The hole Reset will make Wireless CarePhone reboot. To activate these functions, just insert a pin into the correspondent hole, press for 2 ~3 seconds and release it.



The default IP setting ,

**IP Mode:** Static IP  
**IP Address:** 192.168.0.100  
**Subnet mask:** 255.255.255.0

The default account for accessing in ,

**Username :** admin  
**Password :** admin

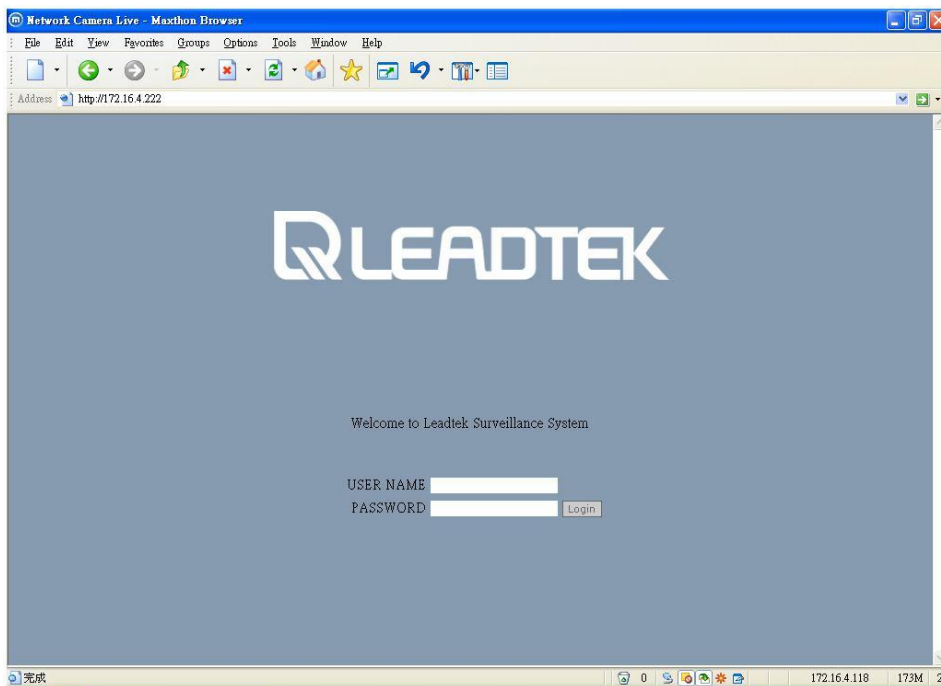
# System Management

## Login

Every **【Product】** has a built-in web server. As long as you have the IP address of the camera, you can go to the management page with the Internet Explorer.

You may have changed some of the network settings of the **【Product】**. In this case, you have to connect to the IP address you set.

If none of the network settings were modified, the default IP address is <http://192.168.0.100>. After connection, the following screen will show up.



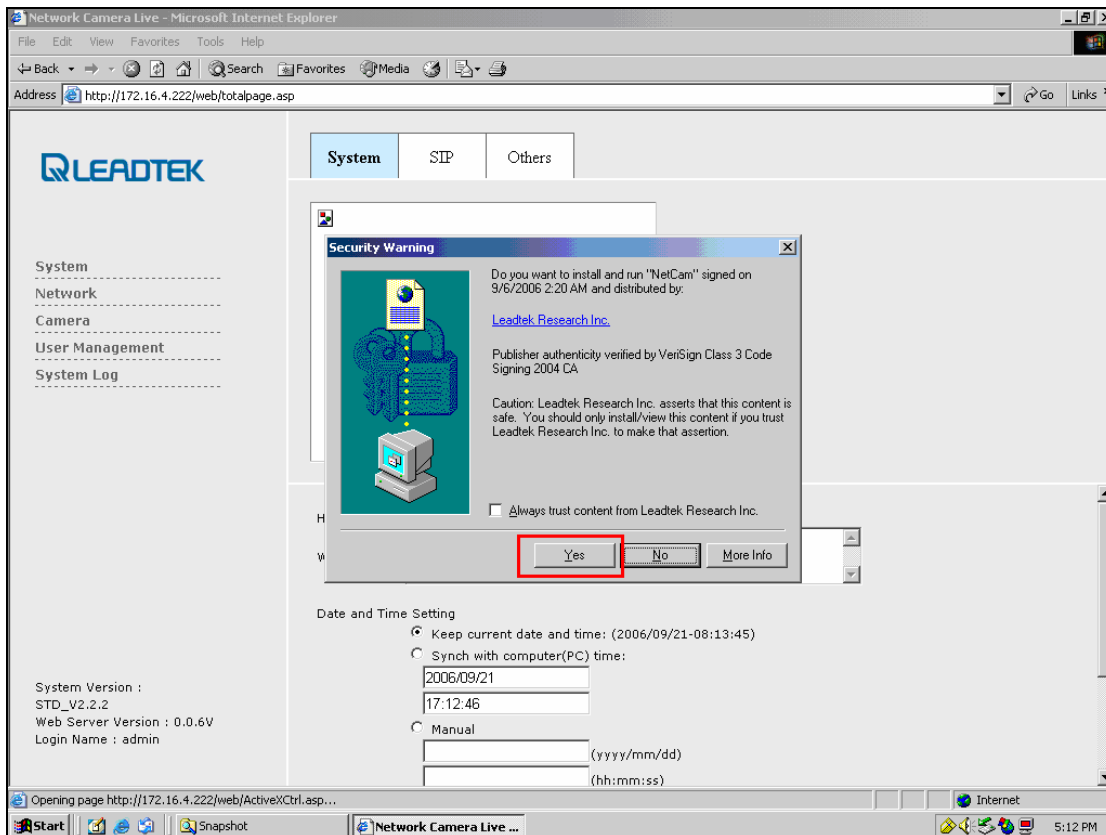
The picture above is the home page of the system. You have to input user name and password.

The default user name is **admin**, and the password is **admin**. Click **Login** to enter the system.

Note: The default IP address of Wireless CarePhone is <http://192.168.0.100>.

## Download the ActiveX Control

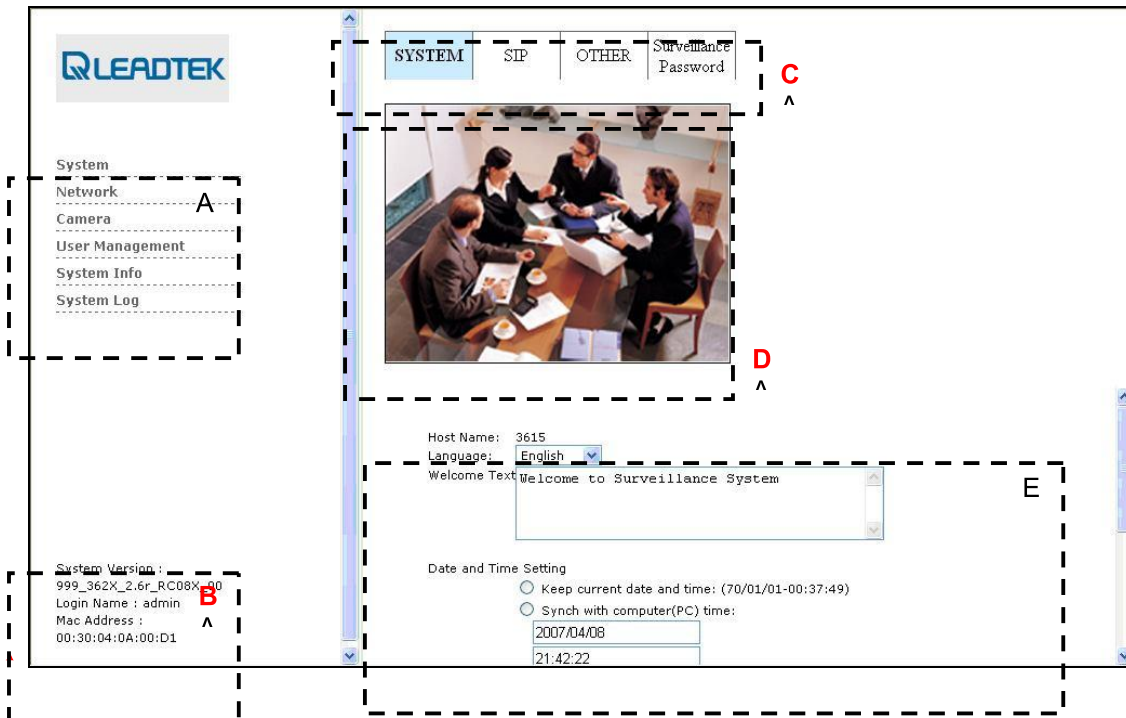
When you use Internet Explorer to connect to the system for the first time, IE browser will ask you to download ActiveX control. The downloading will take approximately one minute. A dialog box will appear as the picture shown below. Click **Yes** to install the codec.



When the ActiveX control is installed, you will see a video window in the center of the screen.

# Overview

When you use Internet Explorer to do remote video surveillance, the system interface will look like this:



**A: Menu:** There several items in the left column to choose from: System, Network, Camera, User Management, and System Log.

**B: Version Information:** The detailed information will be listed:

**C: Submenu:** Every item in the menu has a few sub-items. Click the tabs to switch function pages .

**D: Real-time Video:** The real-time video will be displayed here after the ActiveX control object has been installed.

**E: Settings:** Modify the configurations of the system here.

# System

In the following screen, you can see three different menus: System, **SIP**, **APS**, **Others**, **DIDO**, and **Surveillance Password**. Click on the tabs to switch functions.

## System

Host Name:	3615
Language:	English <input type="button" value="v"/>
Welcome Text	<div style="border: 1px solid black; padding: 2px;">         Welcome to Surveillance System       </div>
Date and Time Setting	
	<input type="radio"/> Keep current date and time: (2007/08/13-03:39:06)
	<input type="radio"/> Synch with computer(PC) time:
	<input type="text" value="2007/08/13"/>
	<input type="text" value="11:39:00"/>
	<input type="radio"/> Manual

Function	Description
Host Name	Name of device .
Language	You can change the language from the drop-down menu.
Welcome Text	Set the messages to be displayed in home page.
Date and Time Setting	1. You can keep the current time settings. 2. You can synchronize the time with your computer. 3. You can manually set the time. 4. You can set the time via the SNTP server (such as clock.stdtime.gov.tw) and set the time zone.



# SIP

SIP Phone Name	<input type="text" value="88660520010"/>
IP Cam Sip Port	<input type="text" value="5060"/>
SIP Server	<input type="text" value="203.160.252.153"/>
Server Port	<input type="text" value="5060"/>
Register Timer	<input type="text" value="1200"/>
Domain Name	<input type="text" value="ipcam.gvscnet.net"/>
Proxy Domain	<input type="text" value="ipcam.gvscnet.net"/>
User Name	<input type="text" value="88660520010"/>
Password	<input type="text" value="88660520010"/>
Stun Detect	<input type="radio"/> ON <input checked="" type="radio"/> OFF
Stun Server IP	<input type="text" value="203.160.252.157"/>
Stun Server Port	<input type="text" value="3478"/>
Stun Enable HB	<input checked="" type="radio"/> ON <input type="radio"/> OFF
Stun HB Interval	<input type="text" value="30"/>
Sip Register	<input type="radio"/> ON <input checked="" type="radio"/> OFF

Function	Description
SIP Phone Name	The SIP phone number of Wireless CarePhone
IP Camera SIP Port	The SIP port for Wireless CarePhone
SIP Server	The IP of the SIP proxy server
Server Port	The port of the SIP proxy server
Register Timer	The register timer of the SIP server
Domain Name	The domain name of the SIP server
Proxy Domain	The proxy domain of SIP server
User Name	The user name registered with the SIP server
Password	The password registered with the SIP server
STUN Detect	Enable STUN detection for NAT pass-through
STUN Server IP	The IP address of STUN server
STUN Server Port	The port of STUN server
STUN Enable HB	Choose whether to enable sending packets to keep connected.
STUN HB Interval	The interval of the packets that are sent to the STUN server to keep connected.
SIP Register	Whether it has been registered with the SIP server

## APS



APS :  ON  OFF

Save Cancel

Function	Description
APS ON	Enable APS ; please follow the LED indicators to complete the APS download/upgrade process and then restart the device .
APS OFF	Disable APS

☆APS · Automatic Provision Server: Leadtek provides users with automatic update service. **Make sure you are going to use this function before changing the setting.** When APS is set to ON and the product is connected to the network, the product will be automatically updated whenever there are new updates.

## Others

Upgrade : Ramdisk

瀏覽... Upgrade

System Reboot: Execute

Reset Data to Factory Default: Initial

Function	Description
Upgrade	Click Browse; to choose a valid ramdisk upgrade file. Click <b>Upgrade</b> to start the process.
System Reboot	Click <b>Execute</b> to reboot.
Reset Data to Factory Default	Click <b>Initial</b> to restore the data to factory default.

## DIDO

DI Enable :  ON  OFF

DI Type :

IM Notify IP :

IM Notify Phone Number :

IM Notify :

DO Notify :

SMTP Send :

FTP Send :

DO Type :

Function	Description
DI Enable	Enable the Device Input.
DI Type	Choose the type of DI ( <b>RISE</b> or <b>FALL</b> ).
IM Notify IP	Set the IP address to notify after DI is triggered. SMC will take the action in this setting.
IM Notify Phone Number	Set the phone number to notify after DI is triggered. SMC will take the action in this setting.
IM Notify	Choose whether to enable IM Notify. SMC will take the action in this setting.
DO Notify	Enable this if DO is triggered by DI.
SMTP Send	Send pictures by e-mail (triggered by DI.)
FTP Send	Send pictures by FTP (triggered by DI.)
DO Type	Choose the type of DO ( <b>RISE</b> or <b>FALL</b> )

## Surveillance Password

Enable Password :  ON  OFF

Input Password :

Confirm Password :

Function	Description
Enable Password	The password can protect private audio/video sources of CarePhone from being accessed. If this is enabled, user has to input the password to be verified by CarePhone.
Input Password	Input the password. The default is 12345. The password can only be a string of numbers (0-9).
Confirm Password	Confirm the password. The password can only be a string of numbers (0-9).

☆ **The password can only be a string of numbers (0-9).** A password with other characters may be incompatible with Leadtek SoftPhone.

# Network

You will see three different menus in the following screen: **IP**, **FTP**, **SMTP**, **DDNS**, and **RTP Port**. Click the tabs to switch the functions.

## IP

Function	Description
DHCP	DHCP mode. The IP is assigned by the DHCP server.
Static IP	Configure the IP according to your network environment, including IP address / Subnet Mask / Default gateway / Primary DNS / Secondary DNS settings.
PPPoE	Set the user name and password for ADSL users.

☆ If the network setting is modified, you must restart CarePhoneR. You will see a dialog box to prompt you to do so.

## FTP

Server Name:	<input type="text" value="172.16.4.57"/>
Login Name:	<input type="text" value="3615"/>
Password:	<input type="password" value="••••"/>
<input type="button" value="Save"/> <input type="button" value="Cancel"/>	

Function	Description
Server Name	The IP or domain name of the FTP server.
Login Name	The login name of the FTP server.
Password	The password of the FTP server.

☆ This setting will take effect when the surveillance camera is triggered to send pictures.

# SMTP

Server Name: 172.16.0.16

Login Name: edward

Password: ●●●●●●

Send From: 3615@172.16.4.1

Send To:

Send To:

Send To:

Mail Title: 3615\_Alarm

Mail Message: Hi

Save Cancel

Function	Description
Server Name	The IP or domain name of the SMTP server.
Login Name	SMTP account
Password	SMTP password
Send From	Sender information
Send To	The first recipient.
Send To	The second recipient.
Send To	The third recipient.
Mail Title	The topic of the email.
Mail Message	The contents of the email. The user can type the contents in the text area.

☆ This setting will take effect when the surveillance camera is triggered to send pictures.



## DDNS

DDNS Client Enable :	<input type="radio"/> On <input checked="" type="radio"/> Off
DDNS Username :	<input type="text"/>
DDNS Password :	<input type="password"/>
DDNS Alias :	<input type="text"/>
DDNS Uptimer :	<input type="text" value="1800"/>
DDNS System ID :	<input type="text" value="DYNDNS_DEFAULT"/> ▼
<input type="button" value="Save"/> <input type="button" value="Cancel"/>	

Function	Description
DDNS Client Enable	Enable DDNS support
DDNS Username	The username of DDNS
DDNS Password	The password of DDNS
DDNS Alias	The Alias of DNS
DDNS Uptimer	The uptimer of DDNS
DDNS System ID	The system ID of DDNS. Please use DYNDNS DYNAMIC.

☆Please go to <http://www.dyndns.org> to register a DDNS account and register the service for your CarePhone.

## RTP Port

Rtp port range from  to

Function	Description
RTP Port range form	The user can set the range of RTP port to which the surveillance camera will send out the media stream.

☆Please consult computer technicians/MIS staff before changing the settings.

# Wireless

Please refer to the Figure -1 to install the network environment.



【Figure1】

## Instructions

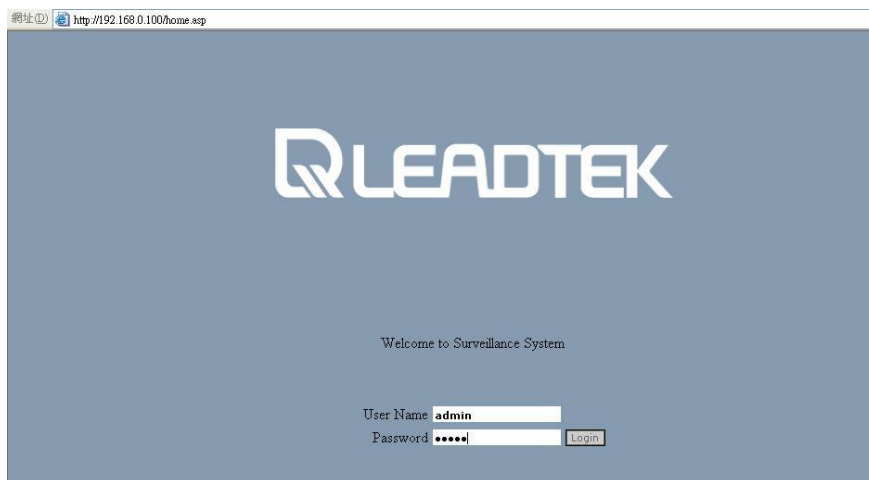
### Step1

Prepare one Access Point (Wireless AP) and finish the configuration of the Wireless Network. Here we recommend that set the IP Sharing Mode as DHCP .

### Step2

We should connect Wireless CarePhone via the LAN , i.e. visit the front page of IP address <http://192.168.0.100> , as the Figure-2.

Please refer to the Wire Connection guiding chapter for detailed instruction for LAN connection.



【Figure-2】

### Step3

Here we click to **【Wireless】** and enable the Wireless network. Firstly, the Enable option needs to be set as YES and key-in the SSID as the Wireless AP's service ID. After finish the fields filling, please press the SAVE button to store the modification. Message **¡Save Success! To apply new settings please restart the IPCam.¡** will pop up to inform users that the device needs to restart so that the configuration will take effect (Figure-4).

### Tip

This sample shows the Non-Encryption connection; if with the encrypted Wireless AP, users may choose the WEP option from Wireless CarePhone from the Data Encryption option.



【圖 3】



【圖 4】

### Step 4

Restart the Wireless CarePhone. With the correct configuration, the network LED indicator on Wireless CarePhone will turn to be amber, which means wireless connection has been successfully established.

### Tip

If finish the Wireless configuration, please execute the SYSTEM REBOOT from menu **【System/Others】**.

### Step5

Connect your laptop/desktop to the wireless AP.

### Tip

If the wireless AP is set as DHCP mode, please also configure the laptop/desktop as DHCP as well. This step will help to assign the IP address of the computer/Wireless CarePhone in the same domain.

### Step6

While finishing the network environment installation, you should use the Internet Explorer or the Applications, i.e. Netcam/SoftPhone), to connect to the Wireless CarePhone.

## The way to reach a CarePhone

Here we use the IIAP as the automatic search(Figure-5).

Firstly we should execute the IIAP and key-in the WLAN MAC address of the Wireless CarePhone. And press the SCAN button to search the devices which are under the same network domain. If one is perfectly match the MAC, the detailed IP information will be displayed as Figure-6.

### Tip

If your laptop/desktop is with multiple network cards, the Network Interface button will display. Please select your dedicated network card before your start to scan the Wireless CarePhone.

For now, IIAP is only support for the local search.

The screenshot shows the IIAP software interface at Step 1. The title bar reads "IIAP (Version: 1.2.2.08/03/05)". The language is set to "Tradition Chinese".

**步驟1. 請輸入 MAC 位置**

MAC:  ?

Buttons: 搜尋, 網路卡選擇

**步驟2. 顯示網路訊息** (選擇所要搜尋的網)

IP 模式:	PPPoE	子網路遮罩:	255.255.255.0	DNS 伺服器1:	0.0.0.0
IP 位址:	192.168.0.100	預設閘道:	0.0.0.0	DNS 伺服器2:	0.0.0.0

**步驟3. 修改設定**

網路 | 監控密碼

自動取得 IP (DHCP)

固定 IP

IP 位址:

子網路遮罩:  DNS 伺服器1:

預設閘道:  DNS 伺服器2:

PPPoE

使用者名稱:

密碼:

Button: 確認

【圖 5】

The screenshot shows the IIAP software interface at Step 2. The title bar reads "IIAP (Version: 1.2.2.08/03/05)". The language is set to "Tradition Chinese".

**步驟1. 請輸入 MAC 位置**

MAC:  ?

Buttons: 搜尋, 網路卡選擇

**步驟2. 顯示網路訊息**

IP 模式:	固定 IP	子網路遮罩:	255.255.255.0	DNS 伺服器1:	0.0.0.0
IP 位址:	192.168.0.100	預設閘道:	192.168.0.254	DNS 伺服器2:	255.255.255.255

**步驟3. 修改設定**

網路 | 監控密碼

自動取得 IP (DHCP)

固定 IP

IP 位址:

子網路遮罩:  DNS 伺服器1:

預設閘道:  DNS 伺服器2:

PPPoE

使用者名稱:

密碼:

Button: 確認

【圖 6】

# Camera

## Camera Settings

Resolution :	<input type="text" value="CIF"/>
Bit Rate Control :	<input type="radio"/> Auto <input checked="" type="radio"/> Manual
Bit Rate :	<input type="text" value="512 K"/>
Frame Rate :	<input type="text" value="20"/>
Brightness :	<input type="text" value="100"/>
Contrast :	<input type="text" value="20"/>
Saturation :	<input type="text" value="16"/>
HUE :	<input type="text" value="100"/>
Auto White Balance :	<input type="radio"/> ON <input checked="" type="radio"/> OFF
Auto Exposure :	<input type="radio"/> ON <input checked="" type="radio"/> OFF
Color Temperature :	<input type="text" value="2850 K"/>
Rotation :	<input checked="" type="radio"/> Normal <input type="radio"/> 180 deg
Power Frequency :	<input checked="" type="radio"/> 50HZ <input type="radio"/> 60HZ
<input type="button" value="Refresh"/> <input type="button" value="Cancel"/>	

Function	Description
Resolution	Adjust resolution of the image (needs reboot)
Bit Rate Control	Choose Auto or Manual for Bit Rate Control
Bit rate	Manually choose the bit rate.
Frame Rate	Choose the highest frame rate the system generates
Brightness	Adjust the brightness of the image
Contrast	Adjust the contrast of the image
Saturation	Adjust the saturation of the image
HUE	Adjust the hue of the image
Auto Exposure	Adjust the auto exposure of the image
Color Temperature	Adjust the white balance according the environment lighting factor.
Rotation	Rotate the image by 180 degrees (upside down)
Power Frequency	Choose the power frequency (50Hz or 60Hz)

## Encode Type

Audio Type :  G711 A-LAW  G711 MU-LAW  
Video Type :  MPEG4  H263

**Update** **Cancel**

Function	Description
Audio Type	Choose the type of audio the surveillance camera generates ✓ G.711 a-law ✓ G.711 mu-law
Video Type	Choose the type of video the surveillance camera generates ✓ MPEG4 ✓ H.263

## Call To

啓動呼叫服務：  開  關

點對點連線 呼叫第1組電話號碼： : 5060 @

點對點連線 呼叫第2組電話號碼： : 5060 @

點對點連線 呼叫第3組電話號碼： : 5060 @

來源：  移動偵測  DID

持續撥號時間： 30

通知已連線的用戶端軟體

There are two types of connections. This has to be specified in the Call To settings. There other three sets of phone numbers have to be in the format below.

### ◆ Peer to Peer

This is used when the product is not registered with the SIP Server. The URI of the other party and the public IP address of the local machine have to be obtained.

Peer to peer Phone1 : @ 222.57.91.176 : 5060

A.撥出連線模式 B.點對點(Peer to Peer) 留空 C.輸入撥出端 IP 位址 D:撥出端 SIP 通訊埠位

- Select Peer to Peer connection mode
- Please remain NULL for this field since the selection of A step is Peer to Peer .
- Fill with the IP address/Fully Qualified Domain Name (FQDN) of the calling end point .
- Fill with the SIP communication port of the calling end point ( 5060 is for default )

### ◆ Proxy Server

If the product has been registered with the SIP Server, fill in the URI with the assigned phone number, and fill in the IP Address with the DNS or IP address of the SIP Server.

Proxy server Phone1 : 886050xxxxx @ cptw.gvscnet.net : 5060

A.撥出連線模式 B.輸入撥出端電話號碼 C.撥出端 SIP 通訊埠位  
D.輸入撥出端伺服器位址或網域名稱

ex. 以宅護通可使用的代理伺服器名稱爲 cptw.gvscnet.net爲例

- Select Proxy Server connection mode
- Fill with the telephone number which is bundled with Wireless CarePhone ( After configured the APS service to be ON , the number can be found right at the left-down corner .) Please also refer to the BLUE part at figure below .





CAMERA ENCODE TYPE Call To

- System
- Network
- Camera
- User Management
- System Info
- System Log

System Version :  
999\_3680\_2.6r\_RC18X\_00  
Login Name : admin  
Mac Address :  
00:30:04:0A:03:3F  
SIP Phone Name : 886501

System Version :  
999\_3680\_2.6r\_RC18X\_00  
Login Name : admin  
Mac Address :  
00:30:04:0A:03:3F  
SIP Phone Name : leadtek

Enable :  On  Off

Proxy server Phone1 :

Peer to peer Phone2 :

Peer to peer Phone3 :

Source :  Motion Detect  DIDO

Call Timeout :

Notify connected pc client

- C. The field will be auto-filled from the SIP configuration page ( Domain Name property )
- D. Fill with the SIP communication port of the calling end point ( 5060 is for default )

Function	Description
Enable	Enable call to service (Automatically call to the assigned SIP phone number)
Source	The source of the triggered phone
Call Timeout	The timeout seconds when a call is not answered.
Notify Connected PC Client	Whether the client (Leadtek NetCam) has been notified

# User Management

In the following picture, the Administrator can add/edit/delete accounts to manage/view the contents of the web page.

No.	User ID	Group	Edit	Del	Privilege Control
0	admin	Administrator	<a href="#">Edit</a>	Delete	<a href="#">Set</a>

[New](#)

Function	Description
New User	Click to add new users.
Edit	Edit the user privileges.
Delete	Delete users.
Set	Set the user privileges.

Wireless CarePhone has two levels of user privileges:  
 Administrator: System manager  
 Guest: General users

Users in each group can have different privileges.

User ID : admin

Privilege:

System       Network

Camera       User Management

System Info     System Log

# System Info

Model Name :	LR3615
Firmware Version:	999_3680_2.6r_RC15X_00
IPCAM ID :	NetCam
IPCAM IP :	172.16.4.97
Phone Number :	leadtek
SIP Registered Status :	OFF
SIP Registered :	NG
Online Users :	0
System Uptime :	42 min
Hardware Version:	V04
Sensor Version:	OV9655

Function	Description
Model Name	The model name
Firmware Version	The firmware version
CarePhone ID	The ID of CarePhone
CarePhone IP	CarePhone IP address
Phone Number	The phone number
SIP Registered Status	SIP registration status
SIP Registered	Whether the product has been registered with the SIP Server
Online Users	The statistics for online users amount
System Uptime	The time the system has been on
Hardware Version	The version of the hardware manufacture
Sensor Version	The version of the sensor

# System Log

The system log is kept in a recycling manner. The latest record will overwrite the oldest.

Display Log Information :  ON  OFF

```
[log1] = <14>Jan 01 00:03:30 192.168.0.100 LR: Call
Added>URL=dvr3615@leadtek.com ,IP=192.168.0.137,Num=1
```

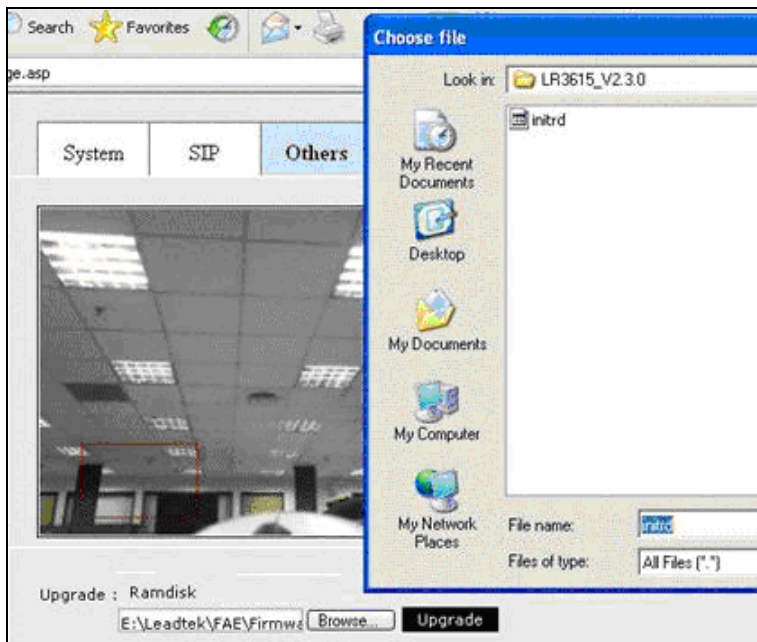
Note:

1. The product has to reboot for the setting to take effect.
2. The product can be restarted by software (System→Others→ System Reboot) or hardware (the hole marked with RESET at the bottom).

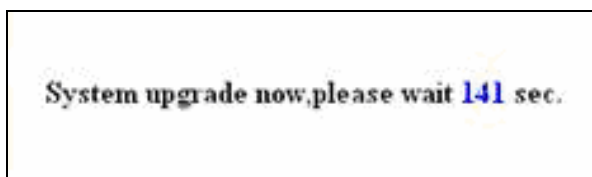
# Firmware Upgrade

The firmware of the product can be upgraded through the browser. Prepare the firmware file and follow the steps below:

- 1) Login to the web page, then select **System** → **Others**.
- 2) Click **Browse** to choose the firmware file. Click **Upgrade** to start the upgrade process.



- 3) A message and a counter will appear, showing the remaining time of the process. When the process is completed, the surveillance camera will automatically restart to allow the new firmware applied with its new configuration .



- 4) It will take 20-30 seconds to complete the restart process and you will see the BLUE LED indicators lighted on again . That represents that the upgrade/restart process has been complete .

Note: Depending on the firmware version, the product may be restored to factory default or retain the original settings. If you want to restore the factory default, you can press the button.

Note: Please see the LED indicators. After correctly reboot, the system can be used instantly.