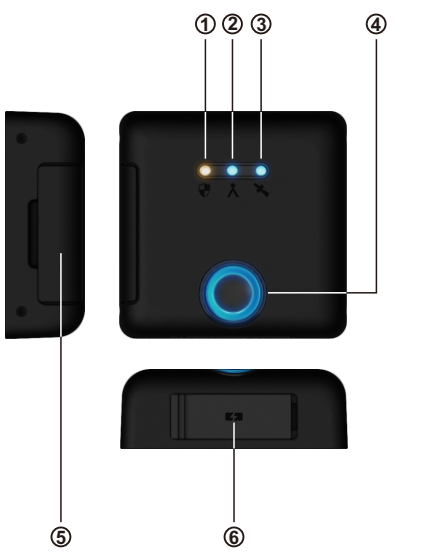


# L1 (SMS mini Tracker)

## User's Guide

Model: LR8M11

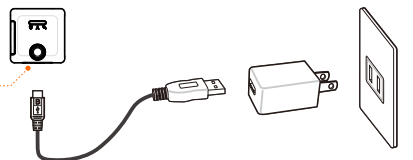
### 1. Overview



- ① Security LED (Orange)
- ② GSM LED (Blue)
- ③ GPS LED (Blue)
- ④ Power Button and LED (Red/Blue)
- ⑤ SIM Card Slot
- ⑥ Micro USB Charging Port

### 2. Charging

1. Connect one end of the USB cable to the Micro USB charging port at the bottom of the tracker.



2. Connect the other end of the USB cable to the power adapter and plug it into the wall socket, or directly connect the cable to the USB port on the computer.

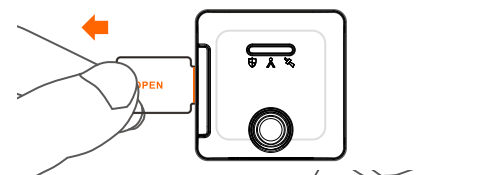
Power LED indicators:  
Power on: Blue (steady)  
Low power: Red (steady)  
No power: Off  
Charging: Red (flashes slowly)  
Charging complete: Blue (steady)

**Note:** Please charge the battery for at least one hour when you use it for the first time to maximize the battery life.

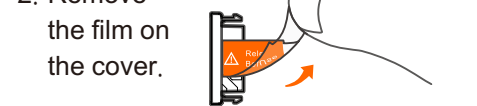
### 3. Install the SIM Card

Before installing the SIM Card, **be sure to unlock the SIM Card Pin Code** to prevent the SIM Card from being locked. In case it's locked for some reason, please contact your carrier.

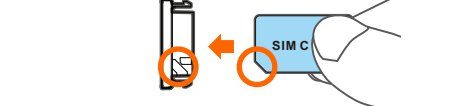
1. Pull the transparent film on the SIM Card Slot cover to open it.



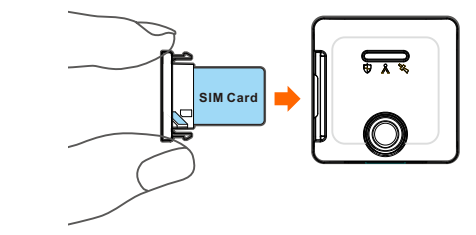
2. Remove the film on the cover.



3. Align the notch on the SIM Card with that on the slot cover and insert the SIM Card into the slot cover.



4. Put the slot cover with the SIM Card back in place.



### 4. Basic Operations

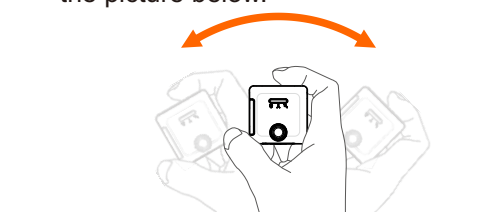
**Power on:** Press and hold the power button for 3 seconds to turn it on.

**Power off:** Press and hold the power button for 3 seconds to turn it off.

**Standby:** When the tracker is on, press the power button (Only lights are off; functions are still working).

**Wake up:** Press the power button in standby mode.

**Security:** When the tracker is awake, shake it to toggle on/off security, as the picture below.



### 5. Install the Tracker

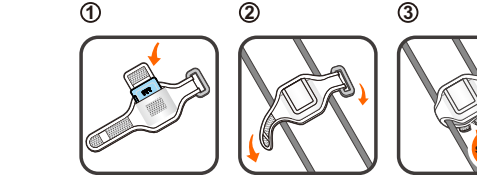
**Note:** Install the tracker with the face up to ensure better reception.

1. On the bicycle

Recommended location:



Installation steps:

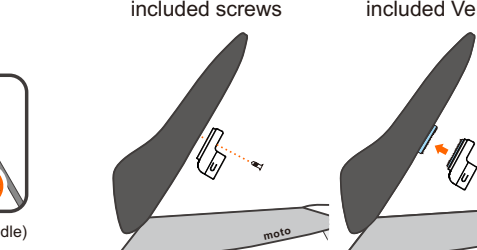


(fastened around the bars below the saddle)

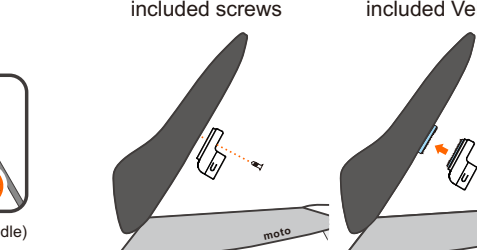
2. On the scooter



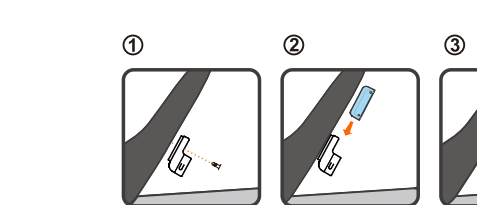
Installation with the included screws



Installation with the included Velcro



Installation steps:



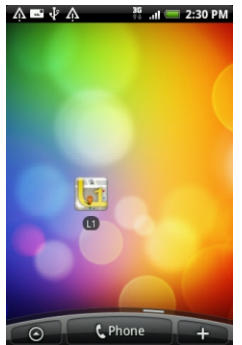
### 6. Reset the Tracker

To reset the tracker, remove the current SIM card in the tracker, insert another SIM card with a different phone number, and power on the tracker. The data in the tracker will be cleared and the tracker will be restored to factory default settings.

## 7. Download App

Go to <http://leadtek.com> to download the App and install it on your smartphone.

Tap the "L1" icon on the desktop to launch the App.

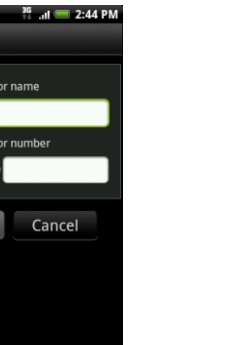


## 8. Add New Tracker

When you use the app for the first time, you have to add a new tracker. Tap **Add** and then **Next**.



Enter the name of the tracker and the phone number of the SIM card, and tap **Confirm**.



The location of the tracker will be displayed on the map.

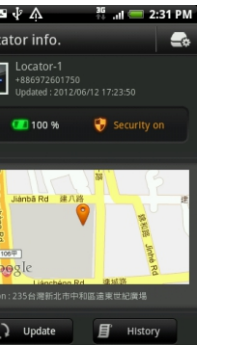
Tap the map for full screen view. Tap the locator on the map to return to main screen.



## 9. Turn On Security

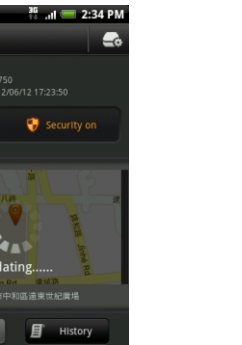
Tap the shield-shaped icon at the center of the main screen to turn on security. Tap it again to turn off security.

When security is on and the tracker detects any vibration, it will alert the user and sends SMS at specified intervals.



## 10. Update Location

Tap **Update** at the bottom of the main screen to update the location of the tracker and display the result on the map.



## 11. History

Tap **History** at the bottom of the main screen to view history logs, including Locations, Alarms, and Security.

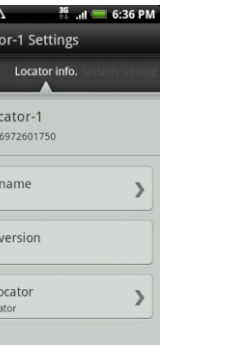


## 12. Tracker Settings

Tap **Settings** at the upper-right of the main screen to enter tracker settings.

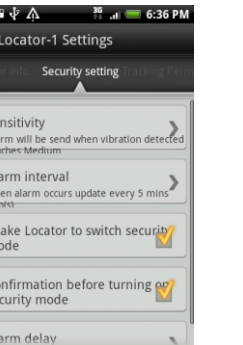
### Locator Info.

You can edit the tracker name or delete the tracker here. After the tracker is deleted, it will be reset and all records will be cleared.



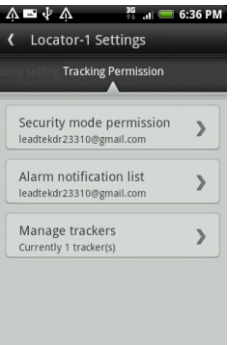
### Security Setting

In this page you can modify Sensitivity, Alarm interval, Shake Locator to switch security mode, Confirmation before turning on security mode, and Alarm delay.



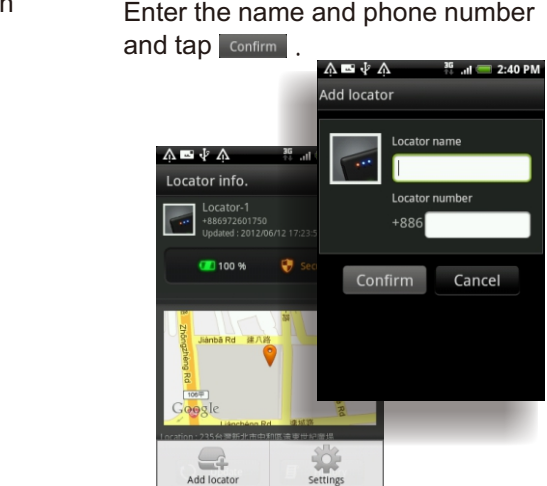
### Tracking Permission

In this page you can modify Security mode permission, Alarm notification list, and Manage trackers.



## 13. Add Second Tracker

In the main screen, press the "Menu" button on the smartphone and tap **Add locator** at the bottom to add a second tracker. Enter the name and phone number and tap **Confirm**.



## 14. App Settings

In the main screen, press the "Menu" button on the smartphone and tap **Settings** at the bottom to enter app settings.

The items include L1 default page, Password status, Vibrate, and Alarm ringtone.

