

Parent Guide & Instructions

This guide contains important information. Please keep it for future reference.



Leapster²

CONNECTED LEARNING GAME SYSTEM



Getting Started

Get Started in Three Easy Steps

1. Set Up Your LEAPSTER2 Handheld: Insert batteries in the battery compartment on the back of the handheld and close and secure the compartment door. Press the On/Off button and select your country code (code only required the first time). Create a profile for each child who will play with the handheld (it can store up to three profiles—pick a name that is easy to remember and can also be used for online profiles). Select a profile on the Player Select screen.

2. Install the LEAPFROG[®] Connect Application*: Insert the included CD-ROM into your computer and follow the instructions on the screen to install the application. An Internet connection is required.

3. Connect Online to Download Your Included Title: Turn on the handheld and connect it to your computer using the included USB cable. Choose a player profile in the LEAPSTER2 view of the Connect Application. Follow the on-screen directions to select and download your child's game of choice. Disconnect the handheld from your computer for on-the-go play!

**If you already have the LEAPFROG Connect Application installed for another device, you will still need to insert the included CD-ROM to install your LEAPSTER2 software. If the included CD-ROM doesn't work or is lost, go to leapfrog.com/gaming/leapster2 to download the application.*

Your LEAPSTER2 Handheld



FOUR WAYS to Play!

The Main Menu on the LEAPSTER2 handheld displays four icons for each of the ways to play. Select any activity from the Main Menu to access the following games and activities.

- 1 Cartridge Games**
Play any LEAPSTER[®] game by inserting a LEAPSTER cartridge into the slot.
- 2 Game Downloads**
Access included title game download or bonus game downloads.
- 3 Connect**
Connect your LEAPSTER2 handheld to your computer to download games and see the rewards that you've earned. (LEAPFROG[®] Connect Application and an Internet connection required. Install application by inserting the included CD.)
- 4 Creativity Castle**
Create art masterpieces that can be uploaded to the online art studio for further embellishment!

Images in this guide represent gameplay only; not actual screen pixelation.

Product Information



Get Connected!

Connect the LEAPSTER2 handheld to your computer to access fun new content for your child and to get personalized/personalised progress updates through the online LEAPFROG® Learning Path.

Kids can:

- Select and download the included game title they choose.

- Unlock rewards such as certificates, coloring/colouring pages, flash cards and more.
- Play additional online learning games that teach core school skills.

Parents can:

- Access the LEAPFROG Learning Path, a free online interactive tool that allows parents to receive detailed updates on the skills, games and even questions their child has been exploring with the LEAPSTER2 handheld.
- Receive recommendations to expand their child's learning journey with LeapFrog.
- Explore additional parent resources, including educational tips, articles and activities.

See **Get Started in Three Easy Steps** for details on installing the LEAPFROG® Connect Application and connecting the handheld to your computer.

Connect Weekly!

We recommend that you connect the handheld to your computer weekly to keep your child's personalized/personalised Learning Path up to date. Connecting often also ensures that your child's reward data and Learning Path information remains saved in the handheld's memory. Infrequent connection could result in the loss of this valuable data.

Consult LEAPFROG Connect help at the top right of the LEAPFROG Connect Application or view the LEAPSTER2 online support and tutorials for information about all of the LEAPFROG Connect features:
www.leapfrog.com/en/home/support/product_pages/leapster2.html

Note: Unless connected to a computer, the LEAPSTER2 handheld will automatically turn off after 5 minutes of inactivity. Press the On/Off button to turn the unit back on. If connected to a computer, the LEAPSTER2 handheld will remain on for the duration of the connection.



Cartridge Games

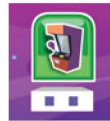
The LEAPSTER2 handheld supports LEAPSTER® games. Those marked "Expanded Play for LEAPSTER2" are specially enhanced to interact with the LEAPFROG Learning Path.

To get started:

1. Insert any LEAPSTER game into the cartridge slot and turn on the handheld.
2. Select the player's name or create a new player profile.*
3. Select the cartridge icon from the Main Menu and have fun (Note: On some LEAPSTER games you may need to sign in again).

* To delete a player profile, hold down the following buttons at the same time: Left Arrow-Home-A Button. Then touch the X icon that appears at the bottom of the screen and follow the audio instructions. Note: You can only delete a name when all 3 name slots are filled.

Product Information



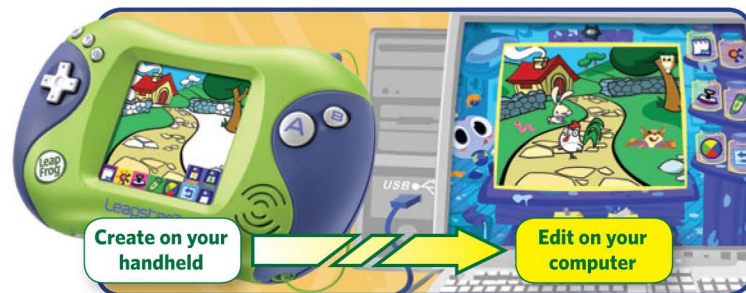
Game Downloads

The LEAPSTER2 handheld tracks your child's accomplishments as he/she plays. Correctly answering a certain number of questions unlocks rewards. One full game of your child's choice can be downloaded to the handheld before he/she plays (see **Get Started in Three Easy Steps** for details on downloading your included title). Kids can earn additional bonus downloadable games by playing LEAPSTER titles.



Creativity Castle Art Studio

Kids can express their creativity by making their own masterpieces. Paint, draw, add animated stamps or weather effects—even change from day to night! Connect the handheld to your computer and go to the LEAPFROG® Connect Application to access the online art studio and upload or edit art.



Touch to select a background, including a blank canvas.



Touch to use a crayon, a paintbrush, a paint bucket or an eraser.



Touch to add weather options: day and night, snow and rain.



Touch to select a color/colour pattern.



Add stamps to a picture. Many are animated!



Touch to undo the last action.



Touch to save your latest picture, or to load a previously saved picture.

Learning Skills

Creativity: Children use their imagination to discover new ways of seeing things. They can create a castle scene with a polka-dot cottage and rainbow grass, or decorate a desert oasis with spitting camels and whirling tornadoes! With so many options, your child is free to explore.

Look for more exciting LEAPSTER® learning games at leapfrog.com/gaming/leapster2

Pre-K to 1st Grade (Ages 4-7)



© 2007 VIACOM INTERNATIONAL INC.
All rights reserved.



© 2009 Lucasfilm Ltd. & TM.



Disney•Pixar elements ©
2008 Disney•Pixar



© 2007 VIACOM INTERNATIONAL INC.
All rights reserved.



© 2009 VIACOM INTERNATIONAL INC.
All rights reserved.



© LeapFrog Enterprises, Inc.
All rights reserved.

Kindergarten to 2nd Grade (Ages 5-8)



Disney•Pixar elements ©
2008 Disney•Pixar



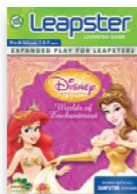
© 2009 Lucasfilm Ltd. & TM.



TM & © 2008 MARVEL
Coming Fall 2009



© 2009 Scholastic Inc.
All rights reserved.
Coming Summer 2009



Disney elements © 2008 Disney



© SONIC Project



© 2008 VIACOM
INTERNATIONAL INC.
Created by Stephen Hillenburg.



© 2009 Scholastic Inc.
All rights reserved.
Coming Summer 2009



Learning Path™

See the Learning.™

See your child's play and learning with the LeapFrog® Learning Path. When you connect any LeapFrog gaming system, you can see the games your child plays most, how they are doing with different skills and more. Tailored tips help you support your child's learning and encourage their passions.

leapfrog.com/learningpath



Instructions for Care

FOR INDOOR, DRY-LOCATION USE ONLY.

Keep food and beverages away from product. Do not spill liquid of any kind on this product as it may render it inoperative. Clean with a slightly damp cloth (cold water). Do not use soap, detergent or other chemicals. Never submerge the unit in water. Allow to dry before re-use. Avoid prolonged exposure to extreme temperatures and direct sunlight. Avoid dropping the unit. Never try to dismantle it.

CAUTION: Routinely check this toy for proper and safe condition. If there is any damage or broken parts, remove toy from use.

ATTENTION: Vérifiez régulièrement que ce jouet est en bon état et qu'il ne présente pas de danger. Dans le cas contraire (par exemple, s'il est cassé à certains endroits), tenez ce jouet hors de portée des enfants.

CAUTION: If for any reason the screen (display) is fractured or cracked, immediately remove this product from use and contact LeapFrog Consumer Services for replacement if under warranty.

ATTENTION: Si pour quelque raison que ce soit, l'écran (d'affichage) est brisé ou fendu, mettez immédiatement ce produit hors de portée des enfants. Contactez ensuite le Service clientèle de LeapFrog pour qu'il soit remplacé (si ce produit est sous garantie).

Battery Information

Requires 4 AA (called LR6 in some countries) alkaline batteries, not included.

Battery Removal and Installation Instructions

1. Open the battery door with a screwdriver, coin or other household tool.
2. If used or spent batteries are present, remove these batteries from the unit by pulling up on one end of each battery.
3. Install new batteries as shown in the polarity (+/-) diagram inside the battery compartment.
4. Replace battery door securely.

Battery Safety

Batteries are small objects. Batteries must be replaced by an adult. Follow the polarity (+/-) diagram in the battery compartment. Promptly remove dead batteries from the toy. Dispose of used batteries properly. Remove batteries for prolonged storage. Only batteries of the same or equivalent type as recommended are to be used.

DO NOT incinerate used batteries.

DO NOT dispose of batteries in fire, as batteries may explode or leak.

DO NOT mix old and new batteries or types of batteries (i.e., alkaline/standard).

DO NOT recharge non-rechargeable batteries.

Rechargeable batteries are only to be charged under adult supervision.

(For Europe only) Rechargeable batteries are to be removed from the toy before being charged.

DO NOT short-circuit the supply terminals.

Sécurité relative aux piles

Les piles sont des objets de petite taille. Le remplacement des piles doit être effectué par un adulte. Respectez le schéma de polarité (+/-) reproduit dans le compartiment des piles. Enlevez rapidement les piles usagées du jouet. Suivez les procédures adéquates pour vous débarrasser des piles usagées. Retirez les piles en cas de non-usage prolongé. Utilisez uniquement des piles ou accumulateurs du type recommandé ou d'un type équivalent. Les piles incluses dans les produits lors de l'achat sont uniquement destinées aux démonstrations en magasin et doivent être remplacées pour améliorer les performances du produit.

NE PAS incinérer les piles usagées.

NE PAS jeter les piles au feu car elles peuvent exploser ou fuir.

NE PAS mélanger piles usagées et piles neuves, ni différents types de piles (c'est-à-dire alcalines/standard).

NE PAS recharger des piles non rechargeables.

Les piles rechargeables ne doivent être chargées que sous la supervision d'un adulte.

(Uniquement pour l'Europe) Les piles rechargeables doivent être retirées du jouet avant d'être chargées.

NE PAS court-circuiter les terminaux d'alimentation.

WARNING: Cords could be a strangulation hazard. Keep out of reach of children under 3 years of age. Children pulling on the cord could cause the computer monitor, TV or other equipment to which the device is connected to fall with the possibility of property damage, serious personal injury or death. Adult supervision required during play.

AVERTISSEMENT: Les cordons peuvent représenter un risque d'étranglement. Tenez-les hors de portée des enfants de moins de 3 ans. En tirant sur le cordon, un enfant peut causer la chute de l'écran de l'ordinateur, de la télévision ou d'un autre appareil connecté à ce dispositif et provoquer des risques de dommages matériels, de blessures graves, voire même la mort. L'utilisation de ce jouet doit avoir lieu sous la supervision d'un adulte.

Protect Your Hearing

CAUTION: Long-term exposure to loud sounds, at high volume, may result in permanent hearing loss. When using headphones or ear buds, it is recommended that the product is listened to at lower volumes for shorter periods of time. Set the volume while in a quiet environment; turn the volume down if you cannot hear people speaking near you. Limit the listening time to 90 minutes, followed by a quiet period. The louder the volume, the less time required before your hearing may be affected. If you experience ringing in your ears or hear muffled speech, stop listening and have your hearing checked.

Protégez votre ouïe

ATTENTION: Une exposition durable à des sonorités trop fortes peut entraîner une perte définitive de l'ouïe. Lorsque vous utilisez le casque ou les écouteurs bouton, il est conseillé de baisser le volume et réduire le temps d'écoute. Réglez le son lorsque vous êtes dans un endroit calme et baissez-le si vous n'entendez pas les personnes qui parlent autour de vous. Limitez le temps d'écoute à 90 minutes, puis accordez-vous un moment de tranquillité. Plus le volume est élevé, plus il y a de chances que votre ouïe soit rapidement touchée. En cas de bourdonnement dans les oreilles ou si vous entendez des voix sourdes, arrêtez immédiatement d'écouter ce produit et faites contrôler votre ouïe dans les plus brefs délais.

WARNING: It is rare but possible for seizures to be triggered by light flashes or patterns such as those on computer screens. To reduce exposure to this potential hazard, play in a well-lit room, sit an appropriate distance from the screen and take 10- to 15-minute breaks every hour. **Parent Note:** The Photosensitive Seizure notice on the screen will last up to 8 seconds to allow for reading. After first use, you may touch the screen or press the A, B or D-pad buttons after 5 seconds and the notice will disappear.

AVERTISSEMENT: Il peut arriver que certaines personnes soient sujettes à une attaque sous l'effet d'une lumière vive ou d'un jeu de lumières provenant de l'écran d'un ordinateur. Pour réduire ce risque, jouez dans une pièce suffisamment éclairée, installez-vous à une distance raisonnable de l'écran et faites une pause toutes les heures, pendant 10 à 15 minutes. **Remarque à l'intention des parents :** L'avertissement concernant l'épilepsie photosensible s'affichera sur l'écran pendant 8 secondes afin d'en permettre la lecture. Après la première utilisation et au bout de 5 secondes d'affichage, vous pouvez appuyer sur l'écran, les boutons A, B, ou sur le pavé directionnel pour faire disparaître cette mise en garde.

Power Adapter Safety

(Adapter sold separately; available from LeapFrog Enterprises, Inc.)

WARNING: Adapter cord could be a strangulation hazard.

CAUTION—ELECTRIC TOY

Not recommended for children under 3 years of age. As with all electrical products, precautions should be observed during the handling and use to prevent electrical shock. FOR INDOOR, DRY-LOCATION USE ONLY.

The transformer is not a toy and should be connected to the wall outlet by an adult. It should be periodically examined for conditions that may result in the risk of fire, electrical shock or injury to persons, such as damage to the cord, plug, blades, housing or other parts, and in the event of such conditions, the transformer must not be used until the damage is repaired.

- The toy must be used only with the recommended transformer.
- The toy is not to be connected to more than the recommended number of power supplies.
- Toys to be cleaned with a liquid are to be disconnected from the transformer before cleaning.
- To clean transformer, disconnect it from the wall and clean with a cloth dampened with water. Do not immerse in water or use soap or other chemicals. Allow to dry before reusing. Do not connect to the AC outlet if wet or damaged.



AC Adapter Electrical Ratings:

U.S., CAN Input: ~120VAC, 60Hz

U.K. Input: ~230VAC, 50Hz

Australia and New Zealand Input: ~240VAC, 50Hz

Output: --- DC9V, 700mA, 6.3VA

Consignes de sécurité pour l'utilisation de l'adaptateur

(Adaptateur vendu séparément ; produit LeapFrog Enterprises, Inc.)

 **AVERTISSEMENT :** Le cordon de l'adaptateur peut provoquer un risque d'étranglement.

 **ATTENTION :** CE JOUET FONCTIONNE À L'ÉLECTRICITÉ

Ne convient pas aux enfants de moins de 3 ans. Comme tous les objets utilisant du courant électrique, ce produit doit être manipulé avec précaution pour éviter tout risque de décharge électrique. A UTILISER UNIQUEMENT EN INTERIEUR, DANS UN ENDROIT SEC.

Le transformateur n'est pas un jouet et il est recommandé que ce soit un adulte qui le branche à la prise murale. Pour éviter tout danger d'incendie, d'électrocution ou de blessure, veuillez à contrôler périodiquement l'état du cordon électrique, de la fiche d'alimentation électrique, des lames de contact, du boîtier ou de toute autre partie. Dans un tel cas, le transformateur doit être réparé avant d'être réutilisé.

- Le jouet doit seulement être utiliser avec l'adaptateur recommandé.
- Le jouet ne doit pas être branché à plus d'accessoires que le nombre recommandé.
- Débrancher le jouet de l'adaptateur avant de le nettoyer avec du liquide.
- Pour nettoyer l'adaptateur, débranchez-le d'abord de la prise murale et utilisez ensuite un tissu humide pour le nettoyer.

Voltage de l'adaptateur

Voltage d'entrée pour les Etats-Unis et le Canada : ~120VAC, 60Hz

Voltage d'entrée pour le Royaume Uni : ~230VAC, 50Hz

Voltage d'entrée pour l'Australie et la Nouvelle Zélande : ~240VAC, 50Hz

Voltage de sortie : --- DC9V, 700mA, 6.3VA

USB Cable

Use only the USB cable provided by LeapFrog Enterprises, Inc. Using any other cable may exceed FCC and other regulatory emissions limits. The USB cable is not a toy. Disconnect the toy from the USB connection before cleaning.

Câble USB

Utilisez exclusivement le câble USB fourni par LeapFrog Enterprises, Inc. L'utilisation d'un autre câble peut dépasser les limites de la FCC (Commission fédérale américaine des communications) et autres limites réglementaires en matière d'émission. Le câble USB n'est pas un jouet. Déconnectez le jouet du port USB avant d'entamer toute opération de nettoyage.

Touch Screen Calibration

Your LEAPSTER2 handheld touch screen has already been calibrated for use, but if you experience either example below, you may adjust the calibration yourself:

- Lines drawn with the stylus appear to be offset from the location of the stylus tip.
- Objects you are trying to select are not being chosen.

Follow these steps to calibrate the touch screen:

1. Hold down the Hint button while turning the unit on.
2. When the LEAPSTER® menu screen appears, press the A button.
3. Touch each of the crosshairs that appear with the stylus.
4. Restart unit.



Country Selection

Selecting your country of residence adjusts the phonetic pronunciation of some letters to better match your country's language. If you need to change your country selection, follow these steps:

1. Press the On/Off button to turn on your system.
2. When the sign-in screen appears, press these buttons all at the same time:
 - a. Home button
 - b. D-pad right arrow button
 - c. B button
3. Follow the on-screen instructions.

Troubleshooting

Symptom	Try This
Toy does not turn on or does not respond	Make sure the handheld is turned on Make sure batteries are correctly installed Make sure battery cover is securely attached Remove batteries and put them back in Clean battery contacts by rubbing lightly with a soft eraser and then wiping with a clean and dry cloth Install new batteries
Display stops working	Install new batteries
Trouble accessing or playing downloaded games	Connect the LEAPSTER2 handheld to the computer and follow directions to connect
Touch Screen - Objects you are trying to select are not being chosen - Lines drawn with the stylus are offset from the location of the stylus tip	Touch Screen Calibration - Refer to the Touch Screen Calibration procedure included in this Parent Guide

FCC NOTICE:

This device complies with Part 15 of the FCC rules. Operation is subject to the following two conditions:

- 1) This device may not cause harmful interference, and
- 2) This device must accept any interference received, including interference that may cause undesired operation.

NOTE: This equipment has been tested and found to comply with the limits for a Class B digital device, pursuant to part 15 of the FCC Rules. These limits are designed to provide reasonable protection against harmful interference in a residential installation. This equipment generates, uses and can radiate radio frequency energy and, if not installed and used in accordance with the instructions, may cause harmful interference to radio communications. However, there is no guarantee that interference will not occur in a particular installation. If this equipment does cause harmful interference to radio or television reception, which can be determined by turning the equipment off and on, the user is encouraged to try to correct the interference by one or more of the following measures:

- Reorient or relocate the receiving antenna.
- Increase the separation between the equipment and receiver.
- Connect the equipment into an outlet on a circuit different from that to which the receiver is connected.
- Consult the dealer or an experienced radio/TV technician for help.

Warning: Changes or modifications to this unit not expressly approved by LeapFrog Enterprises, Inc., could void the user's authority to operate the equipment.

CANADA: This Class B digital apparatus complies with Canadian ICES-003./ Cet appareil numérique de la classe B est conforme à la norme NMB-003 du Canada.

Environmental Phenomena

- The unit may malfunction if subjected to radio-frequency interference. It should revert to normal operation when the interference stops. If not, it may become necessary to turn the power off and back on, or remove and reinstall the batteries.
- In the unlikely event of an electrostatic discharge, the unit may malfunction and lose memory, requiring the user to reset the device by removing and reinstalling the batteries.

Impact de l'environnement

- Une défaillance de fonctionnement de l'appareil peut survenir s'il est sujet à des interférences avec les fréquences radioélectriques. Le fonctionnement normal de l'appareil devrait reprendre avec l'arrêt des interférences. Si ce n'est pas le cas, il peut s'avérer nécessaire d'éteindre et rallumer l'appareil ou de retirer et réinstaller les piles.
- Dans l'éventualité peu probable d'une décharge électrostatique, un mauvais fonctionnement et une perte de mémoire de l'appareil peuvent se produire. L'utilisateur doit alors retirer et réinstaller les piles pour réinitialiser l'appareil.

CONSUMER SUPPORT

U.S. Consumer Service Contact: Visit our Consumer Support website at www.leapfrog.com/support 24 hours a day.

Canada Consumer Service Contact: Visit our Consumer Support website at www.leapfrog.ca/support 24 hours a day.

U.K. Consumer Service Contact: Visit our Consumer Support website at www.leapfrog.co.uk/support 24 hours a day.

Australia Consumer Service Contact: Please submit questions to our support staff via email at info@funtastic.com.au.

LIMITED WARRANTY: Subject to a limited three (3) month warranty. Visit our website at www.leapfrog.com for full details of the warranty provided in your country. LeapFrog shall not be liable for any incidental or consequential damages for the breach of any warranty on this product. Some jurisdictions do not allow the exclusion or limitation of incidental or consequential damages, or limitation on how long an implied warranty lasts, so the above limitations or exclusions may not apply to you.

GARANTIE LIMITÉE : Ce produit est soumis à une garantie limitée de trois (3) mois. Veuillez consulter notre site Web à l'adresse www.leapfrog.com pour obtenir l'intégralité des informations de garantie fournies dans votre pays. LeapFrog ne sera pas tenu responsable des dommages consécutifs ou indirects induits par la violation de toute garantie sur ce produit. Certaines juridictions n'autorisent pas l'exclusion ou la limitation des dommages consécutifs ou indirects, ni même la limitation de la durée des garanties implicites, il est donc possible que les limitations ou exclusions ci-dessus ne s'appliquent pas à votre cas.

LEAPFROG, the LeapFrog logo, the LeapFrog Learning Path logo, LEAPSTER, the Leapster2 logo and SEE THE LEARNING are trademarks or registered trademarks of LeapFrog Enterprises, Inc. © 2009 LeapFrog Enterprises, Inc. All rights reserved.

leapfrog.com/gaming/leapster2

For ages 4 to 8 years.
Convient aux enfants de 4 à 8 ans.

Model: **LEAPSTER2**

LeapFrog Enterprises, Inc.
6401 Hollis Street
Emeryville, CA 94608
(800) 701-LEAP (5327)

Part No. 605-11522-B

LEAPSTER2 Accessories!



LEAPSTER2 Recharging System

LEAPSTER2 Style Set -
Jelly and Stylus Charm

Original LEAPSTER and LEAPSTER2 Accessories!



LEAPSTER Carrying Case

LEAPSTER AC Adapter



LEAPSTER Messenger Bag