

# **Top-View Paging System**

User Manual  
(Manual Ver. 1.00)

**LEE TECHNOLOGY KOREA CO., LTD.**

**email [sales@leetek.org](mailto:sales@leetek.org)  
website [www.leetekorea.com](http://www.leetekorea.com)**

## **KOREA HEADQUARTER**

3<sup>rd</sup> FL. #499-2, Sang3-dong,  
Wonmi-gu, Pucheon-city,  
Kyunggi-do, Korea  
tel +82-32-324-9838  
fax +82-32-324-9840

## **US OFFICE**

6040 Unity Drive Suite L,  
Norcross, GA30071, U.S.A  
tel +1-678-218-0990  
fax +1-678-218-0991

## **1. EQUIPMENT SETUP**

### **1) Charger Setup**



Charger Base  
(1 per 15 pagers)  
W/ Power Supply  
DC12V 2.5A

- (1) Remove contents of box and be sure you have all the necessary hardware:  
Pagers, Chargers, power supplies and etc.
- (2) You may wish to keep the holders flat on a table or mount them  
perpendicular to a wall.  
Plug the power supply into a standard wall outlet and plug the other end  
into either hole on the side of the Charger Base.  
If using more than 15 Pagers connect the Chargers together as shown using  
the power supply and jumper wires.

### **2) Pager Charging**

#### **※ CHARGE YOUR PAGERS FOR 8 HOURS PRIOR TO USE**

- (1) Insert your Top-View Pagers into the slot of the Charger.
- (2) The red light should come in front of each Pager indicating that it is charged  
properly. Be sure all red lights with Pagers come on when a Pager is inserted  
into the slot.
- (3) If no light comes on, check your wires and be sure the Chargers are plugged in  
using the included power supply.
- (4) If some lights come on and others do not, be sure the jumper wires are  
installed properly (each side alternates jumpers). Please refer to Charger  
Hookup above.

※ *The software of the products might be changed without the notice.*

## **2. Top View Pager (For SEEKER Transmitter)**

### **1) SPEC**

- 12 Digits Display
- Rechargeable Battery Included
- 2 Button Switch (Up/Down)
  - \* The “Down” switch is not currently available.
- 5 LEDs
- Vibe and LED Flashing Alert
- Maximum 10 Number Can Be Stored.



### **2) PAGER SETUP**

- (1) Insert your pager into the slot of its charger base.
- (2) The red LED on the top lights up and it indicates the pager is charged properly.
- (3) Whenever you remove a charged pager from its slot, red light will blink with the initial message, SEEKER COMMUNICATION, for 10 seconds.
- (4) “READY” is displayed on LCD.

### **3) POWER ON/OFF**

- Press switch (Up) more than 3 seconds.

### **4) PAGE**

- The corresponding table number is displayed with the alert for 2 minutes. When paged.
- Press the button to stop alert.  
After pressing the button, the message displays for 15 sec.
- The alert time is alternative, pager displays “PAGED”

## 5) MESSAGE

### (1) CAPCODE 1

9090 – Message alert time for 8 sec (Vibe 1sec/LED ALL ON 1sec)

9091 – Message alert time for 15 sec (Vibe 1sec/LED ALL ON 1sec)

9092 – Message alert time for 30 sec (Vibe 1sec/LED ALL ON 1sec)

9093 – Message alert time for 60 sec (Vibe 1sec/LED ALL ON 1sec)

9292 – VIBE ONLY

9393 – OUT OF RANGE OFF

9494 – OUT OF RANGE ON

9595 – LED/BEEP

9696 – LED/VIBE

9797 – LED

9898 – LED/BEEP/VIBE

99 – SLEEP MODE

8181 – F1, F2, F3, F4 → Message displays with the standard Alert.

8182 – F1, F2, F3, F4 → Message displays with the **“Option Vibe”** alert.

### **“Option Vibe”**

F1 → Vibration Only for 11 seconds

F2 → Vibration Only for 3 times

F3 → Vibration Only for 4 times

F4 → Vibration Only for 6 times

### (2) CAPCODE 2

1) A (F1), B (F2), C (F3), D (F4), 11, 22, 33, 44 – 8 CANNED MESSAGE are available in PC Software.

2) 99 – STOP MODE

3) Other Messages

- Top LED continually blinks, unless the user checks the message.
- To enter the message delete mode, press the switch for more than 2 sec.
- To select the mode, DELETE/ALL DELETE/STANDBY, press the switch for 2 sec.
- Selected message can be deleted by pressing the switch for 2 sec.

(3) CAPCODE 3

1) Out of Range Mode – Out of Range Message is displayed on LCD with LED Flash.

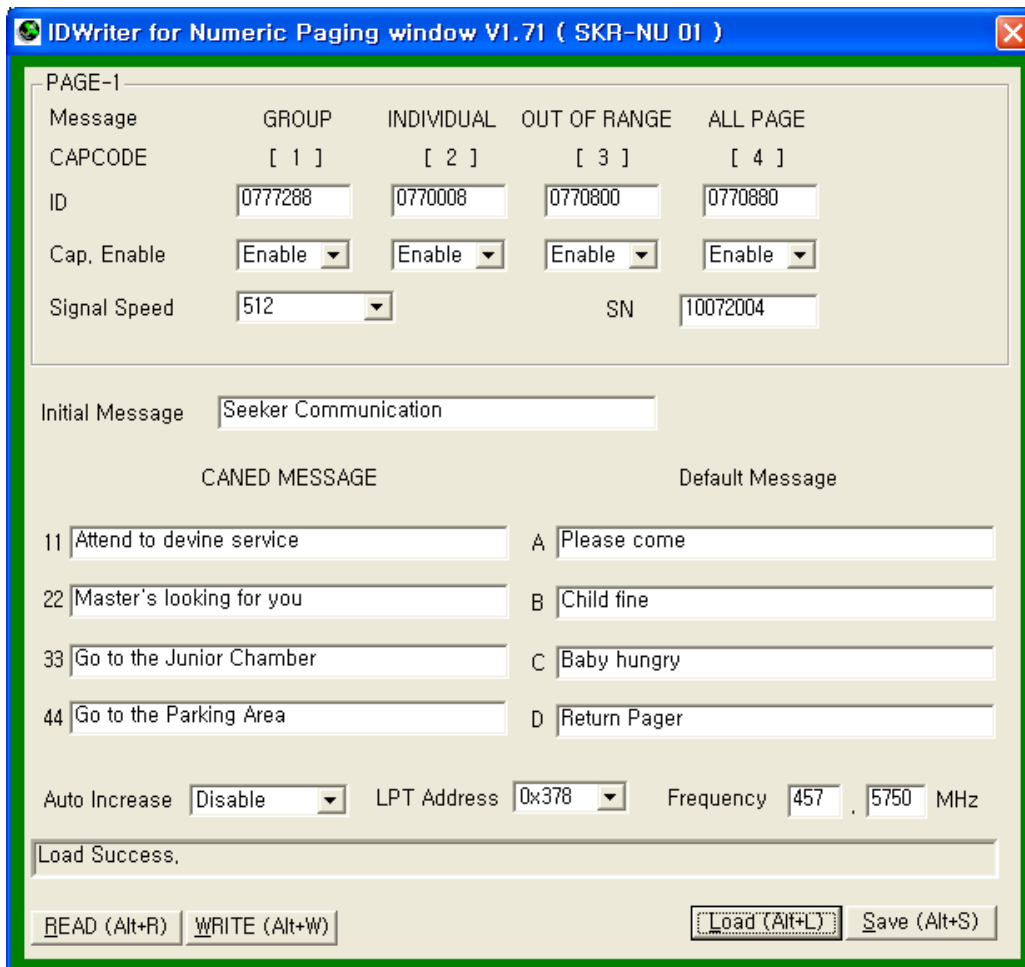
(4) CAPCODE 4

1) Available in sending a message to all group pagers.

2) Canned Messages can be sent to all group pagers by press 110 and F1 key, and then a pre-defined message for the F1 is sent to all group pagers, or press [110 + Enter → 11 + Enter], and then a pre-defined message for the 11 is sent to all group pagers.

※ The sample product is set with the Option of “8182” (Option Vibe)

※ If you would like to change the option vibe mode to the standard alert, and then press “911 - ENTER – 8181 – ENTER”



### **3. Top View Pager (For 4 Light Paging System)**

#### **1) To Turn pager ON**

- ◆ Press the button at the side of pager for more than 3 seconds, and then it will be turned on with a flashing on LEDs.

#### **2) To stop the alert**

- ◆ Press the button shortly at the side of pager to stop the alert.

#### **3) Page Alert**

- ◆ When the pager is alerted, vibrating lasts for 11 seconds and corresponding LED will keep flashing until the user presses the side button.

#### **4) Program-mining page alert mode**

<b>Alert Type</b>	<b>Description</b>
9393	Turn out of range OFF
9494	Turn out of range ON

#### **5) To send a distinctive individual message**

- ◆ With this feature, you have the option of receiving the different messages as described below;
  - ① Return Pager: Press pager no. and “F1” button on the PS-3500 transmitter, then a LED at the “Return pager” will be vibrating for 11 seconds continuously and flashing until pressing the side button.
  - ② Baby hungry: Press pager no. and “F2” button on the PS-3500 transmitter, then a LED at the “Baby hungry” will be vibrating 3 times for 11seconds and flashing until pressing the side button.
  - ③ Child fine: Press pager no. and “F3” button on the PS-3500 transmitter, then a LED at the “Child fine” will be vibrating 4 times for 11 seconds and flashing until pressing the side button.
  - ④ Please come: Press pager no. and “F4” button on the PS-3500 transmitter, then a LED at the “Please come” will be vibrating 6 times for 11 seconds and flashing until pressing the side button.

NOTE: THE MANUFACTURER IS NOT RESPONSIBLE FOR ANY RADIO OR TV INTERFERENCE CAUSED BY UNAUTHORIZED MODIFICATIONS TO THIS EQUIPMENT. SUCH MODIFICATIONS COULD VOID THE USER'S AUTHORITY TO OPERATE THE EQUIPMENT.

**THIS DEVICE COMPLIES WITH PART 15 OF THE FCC RULES.**

**OPERATION IS SUBJECT TO THE FOLLOWING TWO CONDITIONS :**

**(1) THIS DEVICE MAY NOT CAUSE HARMFUL INTERFERENCE, AND**

**(2) THIS DEVICE MUST ACCEPT ANY INTERFERENCE RECEIVED,**

**INCLUDING INTERFERENCE THAT MAY CAUSE UNDESIRE OPERATION.**