

# **Programming Manual**

## **(Software Ver. 3.0)**



**LEE TECHNOLOGY KOREA CO., LTD.**

**email [sales@leetek.org](mailto:sales@leetek.org)**

**website [www.leetekorea.com](http://www.leetekorea.com)**

**KOREA HEADQUARTER**

3<sup>rd</sup> Fl. 499-2, Sang3-dong,


**US OFFICE**

530 Highland Station Drive, Suite 2004,

Wonmi-gu, Bucheon City,  
Kyunggi-do, Korea  
Tel +82-32-324-9838  
Fax +82-32-324-9840  
Blue Tablecall Transmitter

Suwanee, GA 30024, U.S.A.  
Tel +1-678-714-2161  
Fax +1-678-714-2162  
Programming Manual

## 1. Programming Install

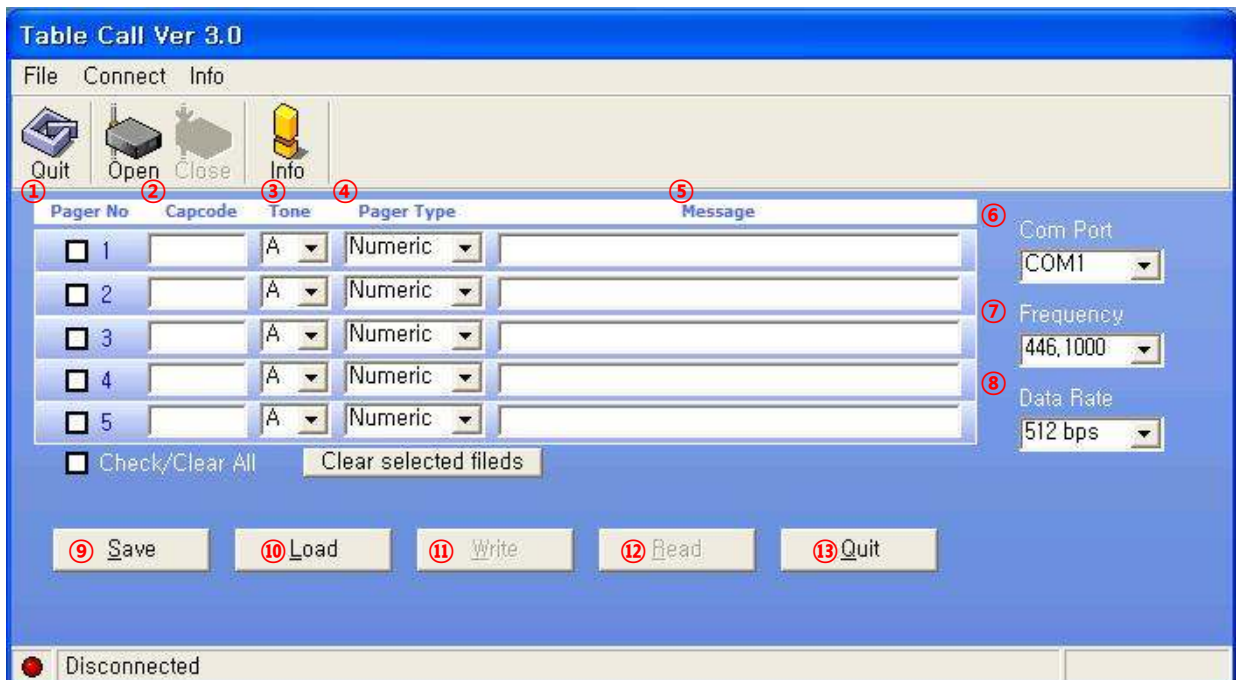
Please Click on  this icon, and install the program on your computer.

## 2. Programming Install

Please run the programming software of TableCall 3.0, and start the program.

⑩

The Program is launched as below:



### 3. How to Program

**You have to click on “OPEN” button in the menu bar, and then all the setup function can be available.**

#### 1) Pager Number

- You need to check all pager number and check all boxes to operate the transmitter.

#### 2) Capcode

- 7 digits Capcode numbers have to be entered.
- Base ID (3 digits) + Pager Individual ID (4 digits)
- If you wish to program the pager with number 1, then you have to enter **0008** for Pager ID.
- For example : 100**0008** (Base ID 100 & Pager number **#1**),  
100**0016** (Base ID 100 & Pager number **#2**) .....
- You have to enter in the box of all 5 capcodes.

#### 3) Tone

- With this button, you can set the pre-set message.  
(If you enter any messages in the Message box, then this function won't work.)

#### 4) Pager Type

- With this button, you have to select Numeric type.

#### 5) Message

- You can enter the messages code number 01 to 20.  
If you enter 01 in the box of message, the message for 01 in the pager

programming software will be displayed on the pager.

#### **6) Com Port**

- With this button, you can set the Com Port number.

#### **7) Frequency**

- Please do not change the frequency.

#### **8) Data Rate**

- 512, 1200, 2400 BPS are available. (Default: 1200 BPS)

#### **9) Save**

- With this button, you can save the information.

#### **10) Load**

- With this button, you can load the information.

#### **11) Write**

- With this button, you can write your message into the pager.

#### **12) Read**

- With this button, you can read the pager.

#### **13) Quit**

- With this button, you can exit from the program.

### **4. How to use**

- 1) Press the button on the Transmitter.
- 2) The corresponding pager will be alert with pre-programmed message.
- 3) To stop the alert, press the side button of pager.

NOTE: THE MANUFACTURER IS NOT RESPONSIBLE FOR ANY RADIO OR TV INTERFERENCE CAUSED BY UNAUTHORIZED MODIFICATIONS TO THIS EQUIPMENT. SUCH MODIFICATIONS COULD VOID THE USER'S AUTHORITY TO OPERATE THE EQUIPMENT.

#### **NOTICE**

This manual, software and electronic circuitry are copyrighted. All rights reserved. Under the copyright laws, this manual, software and electronic circuitry may not be copied, in whole or in part without written prior consent of Lee Technology.

All information provided in this document is carefully prepared and offered in good faith as a guide in the installation, use and servicing of our products. Installers must ensure that the final installation operates satisfactorily within the relevant regulatory requirements. Lee Technology accepts no responsibility for incorrect installation. Lee Technology reserves the right to change products, specifications and installation data at any time without notice.

Lee Technology makes certain limited warranties with respect to defective diskettes, documentation and electronic circuitry. Please see the associated information contained on this page.

#### **LIMITED WARRANTY**

With respect to the physical documentation and physical electronic circuitry enclosed herein, Lee Technology warrants the same to be free of defects in materials and workmanship for a period of one year from the date of purchase. In the event of notification within the warranty period of defects in material or workmanship, Lee Technology will replace the defective diskettes, documentation and electronic circuitry. The remedy for breach of this warranty shall be limited to replacement and shall not encompass any other damages including but not limited to loss of profit and special incidental, consequential, or other similar claims.

Lee Technology Korea specifically disclaims all other warranties, expressed or implied, including but not limited to implied warranties of merchantability and fitness for a particular purpose with respect to defects in the documentation and electronic circuitry and the program license granted herein, in particular, and without limiting operation of the program license with respect to any particular application, use or purpose.

RF EXPOSURE STATEMENT

Your Pager Transmitter contains a radio frequency transmitter.

When the button is pushed the transmitter sends out RF signals.

CAUTION : To comply with FCC RF exposure compliance requirements, A separation distance of at least 8 inches(20cm) must be maintained Between the antenna of this transmitter and all persons, during Normal operation. The antenna used for this transmitter must not be co-located or operating in conjunction with any other antenna of transmitter. Unauthorized antennas, modifications, or attachments could damage the Transmitter and may violate FCC regulations.

For a Class A digital device or peripheral, the instructions furnished to the user shall include the following or similar statement, placed in a prominent location in the text of the manual:

Note : This equipment has been tested and found to comply with the limits for a Class A

Digital device. Pursuant to part 15 of the FCC Rules. These limits are designed to provide reasonable protection against harmful interference in a commercial environment. This equipment generates, uses, and can radiate radio frequency energy and, if not installed and used in accordance with the instruction manual, may cause harmful interference to radio communications. Operation of this equipment in a residential area is likely to cause harmful interference in which case the user will be required to correct the interference at his own expense.