
LEEDARSON

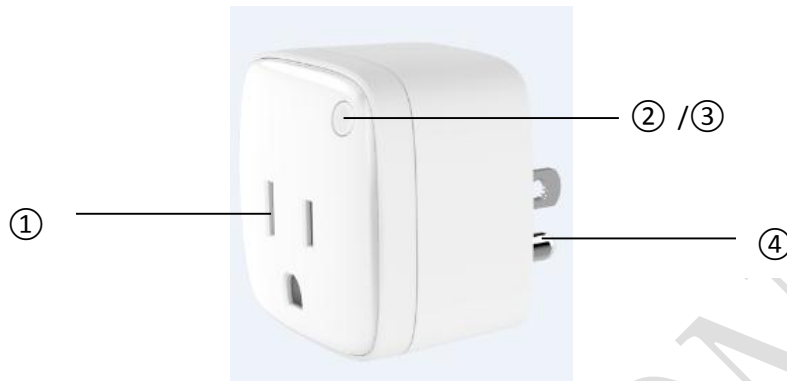
We build your success in IoT.



Smart Plug-NA (Zigbee)

User Guide

Appearance



- ① Socket: Apply to all of specifications of the plug in US. And make your traditional device into smart via control the App
- ② Button: Short press to control the plug on or off; Long press to reset the Smart Plug.
- ③ Indicator: Under normal working state, indicator appear blue light after plugged in mains; Turn off the device, indicator appear red light.
- ④ Plug : Plugged in and connected to the mains.

Download App

1. Free download on any device which runs on Apple iOS 8 or above and Android 5.0 or above.



Setup Step

1. Gateway

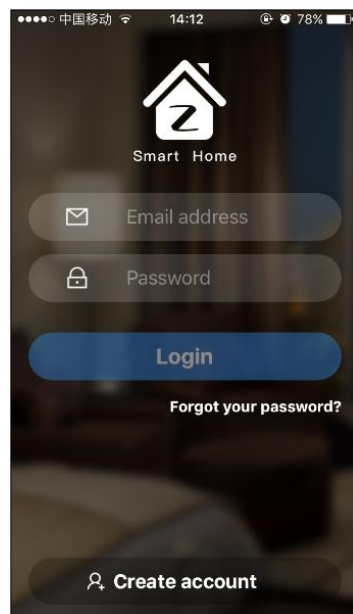
- Open the gateway upper cover. Connect the power adapter cable to micro USB port. Connect the RJ45 cable from router to Gateway RJ45 port.
- Turn on power of both router and gateway. Gateway will get connection to router upon receiving IP assignment from router automatically.

2. NA Smart Plug

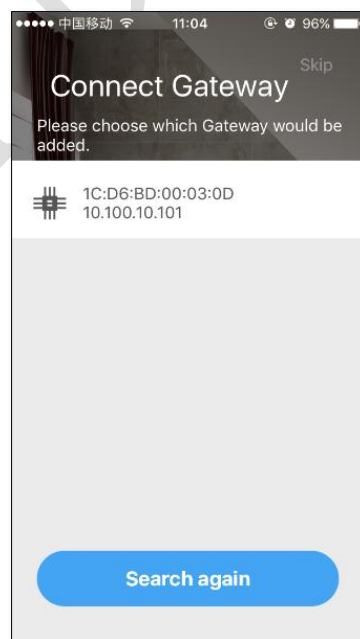
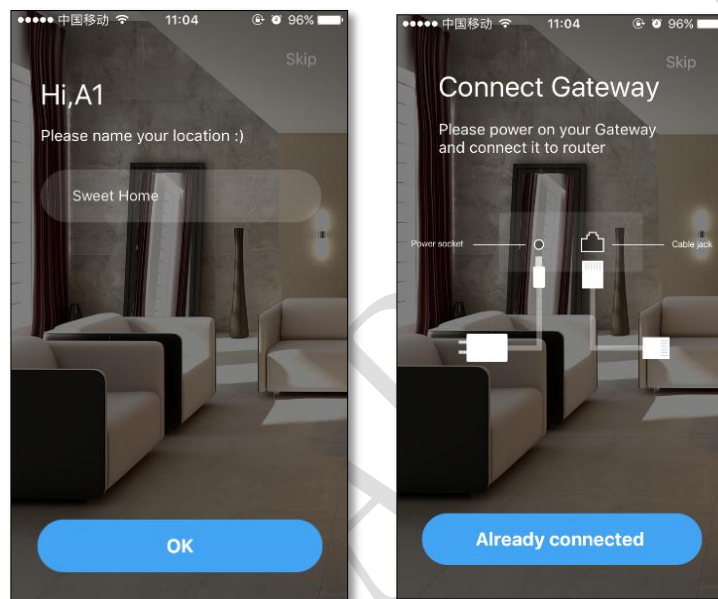
Plugged in and connected to the mains, indicator displayed as blue and normally on.

Launching App

1. Launching the App, choose " Create account " at first time.



-
2. After launching the App,name for the location firstly.If skip this step it will name by“ My Home” as default status.

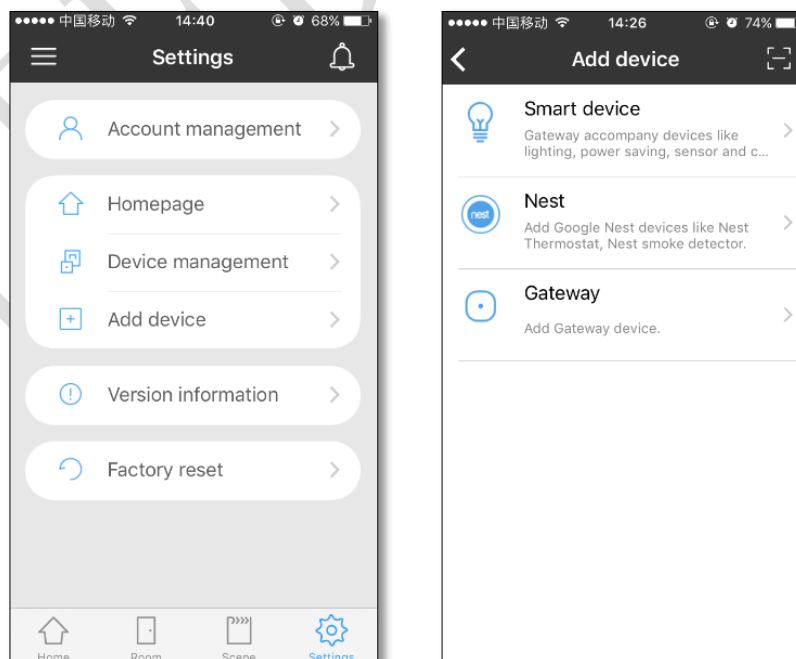


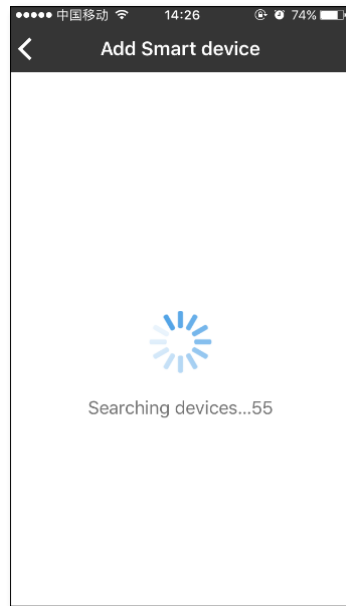
3. Homepage divides into "Home" "Room" "Scene" and "Settings" .



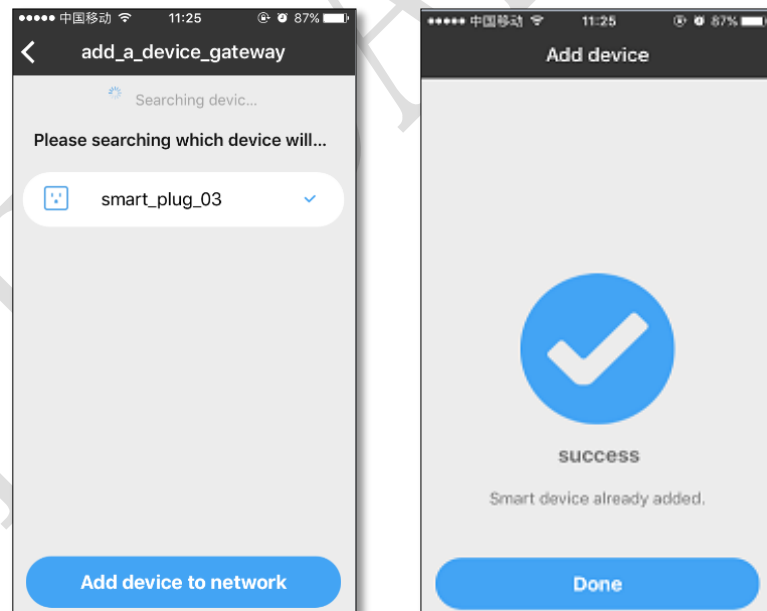
Add Smart Plug

1. Click "Settings" - "Add device" - "Smart device" .

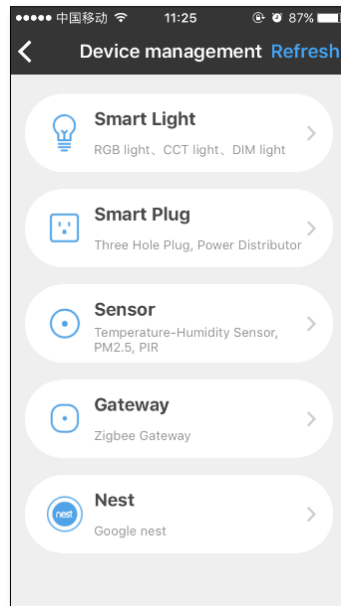




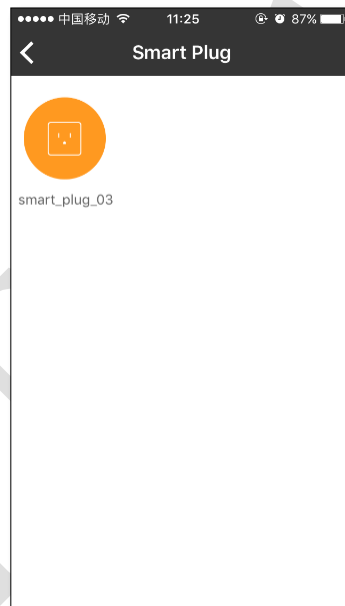
2. Click reset button for 3 seconds, the indicator flash quickly ,after relax the button, finish reset while loading blink twice.
3. The LED will stop blinking and normally on until joining gateway successfully.



4. Smart Plug status could be found in "Settings"->"Device-management"->"Smart Plug".

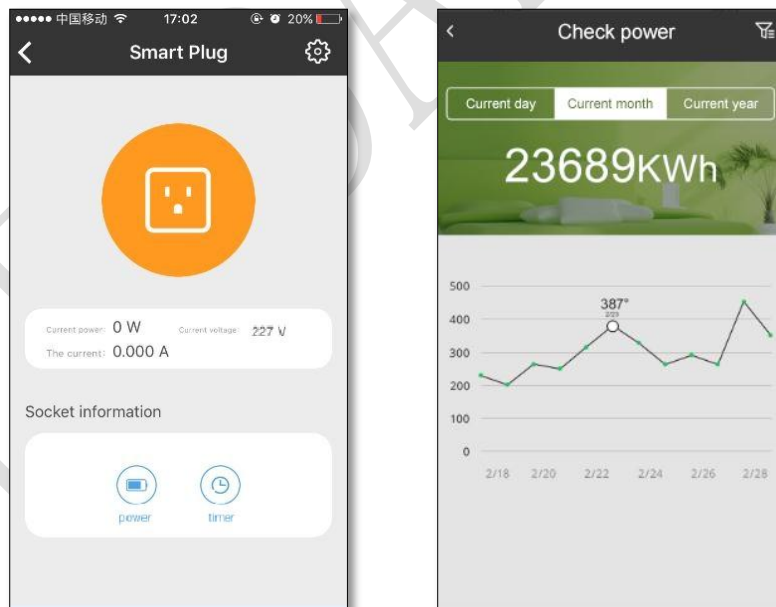



5. short press on icon could control the device on or off; long press on icon will enter to device control interface.

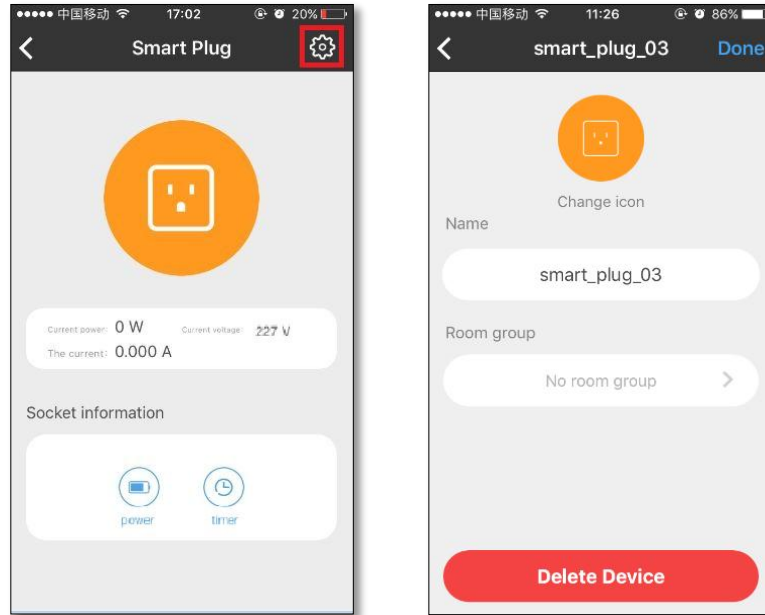




6. Enter editing interface, user can view of the current electricity load situation, electronic quantities detection for the loading, and timing operation. (Timing function is under upgrading)

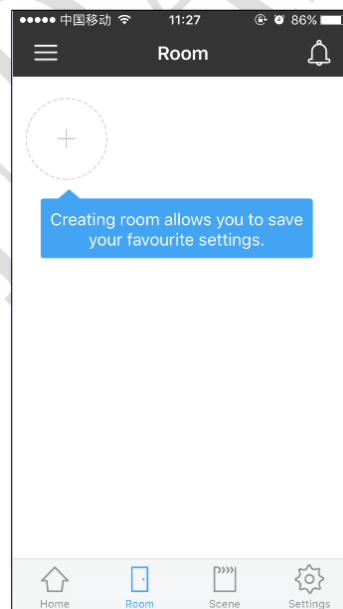


7. Tap "  ", user can naming the plug, room group, delete device.

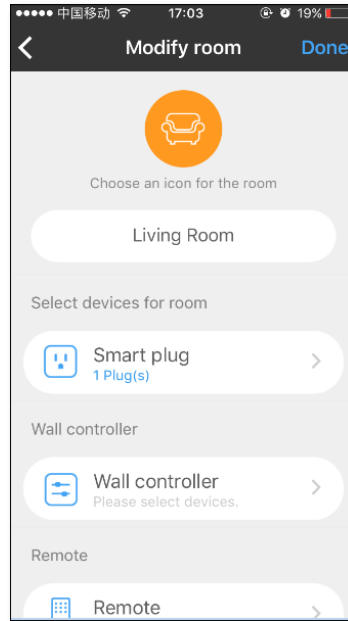


Create Room

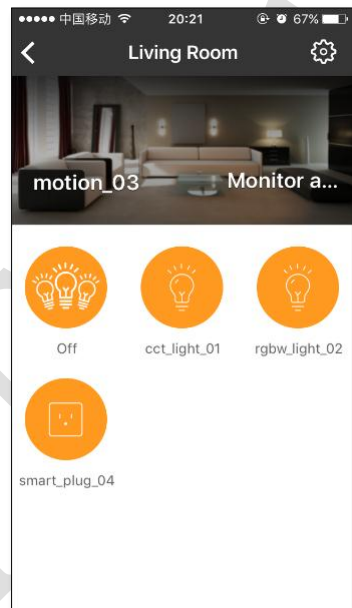
1. Enter the "Room" page, it's empty at first time, tap "+" to create room.



2. In "Modify room", user could edit room name, room icon, add device.

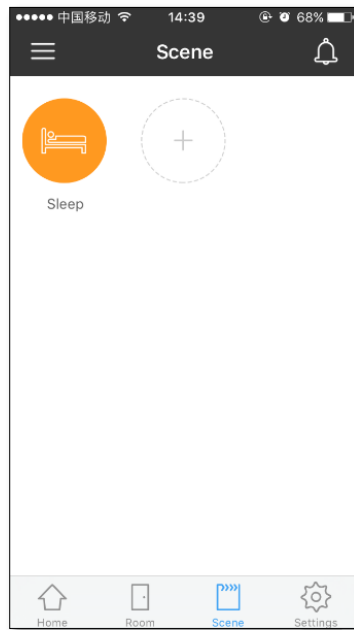


3. short press on icon could control the device on or off; long press on icon will enter to device control interface.

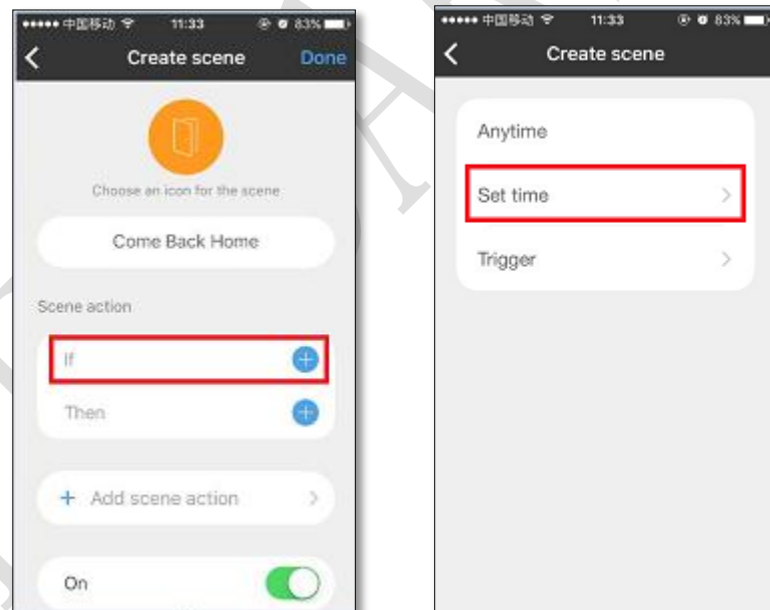


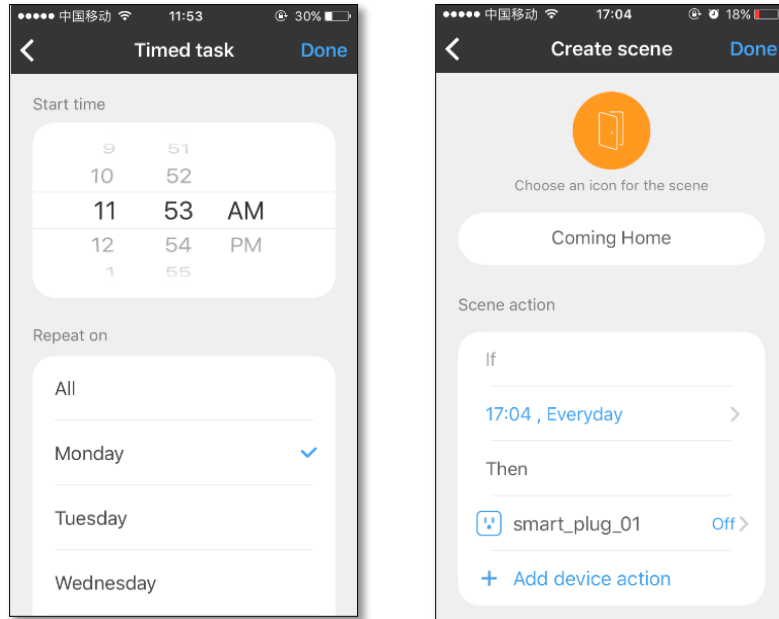
Scene

1. In the "Scene mode", short press to activate scene; Long press to edit scene.



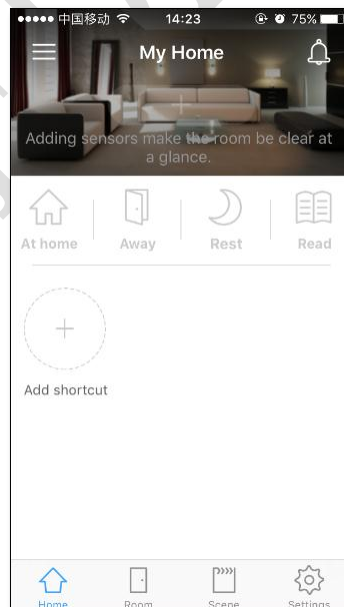
2. Tap " + " to "Create scene" ,enter scene name,scene action,creating "if... " and "then... " ,one scene could interactive with different devices.



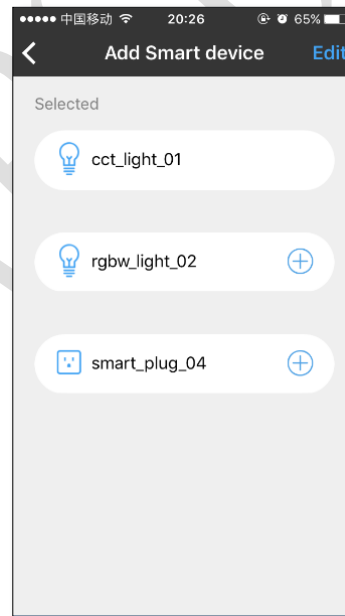
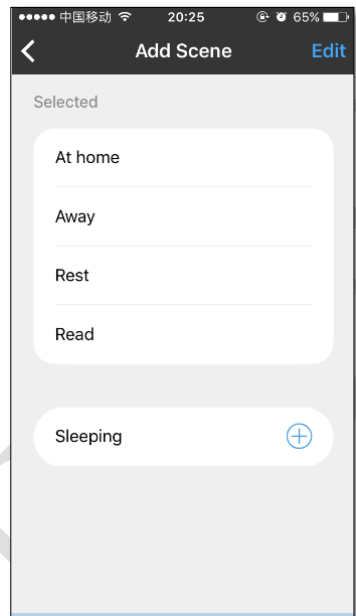
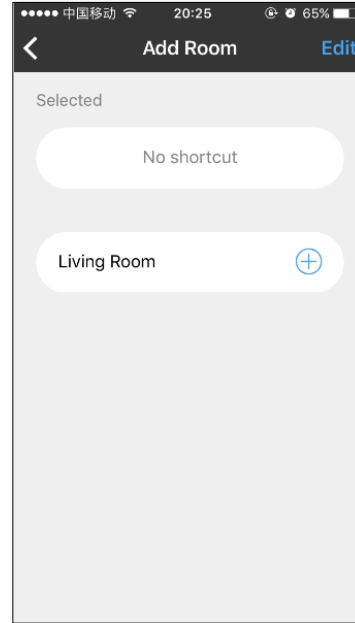
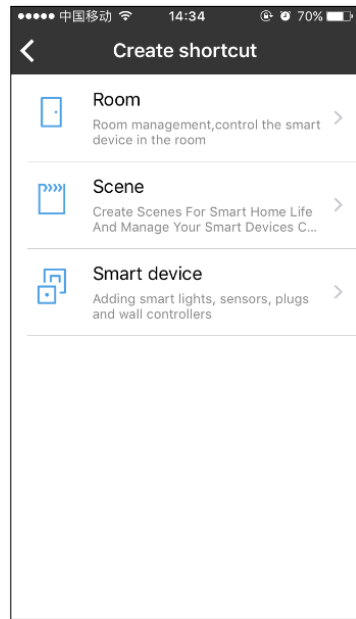


Shortcut

1. Shortcut is to link to room,scene or device that user often use.Tap “+” to add shortcut.

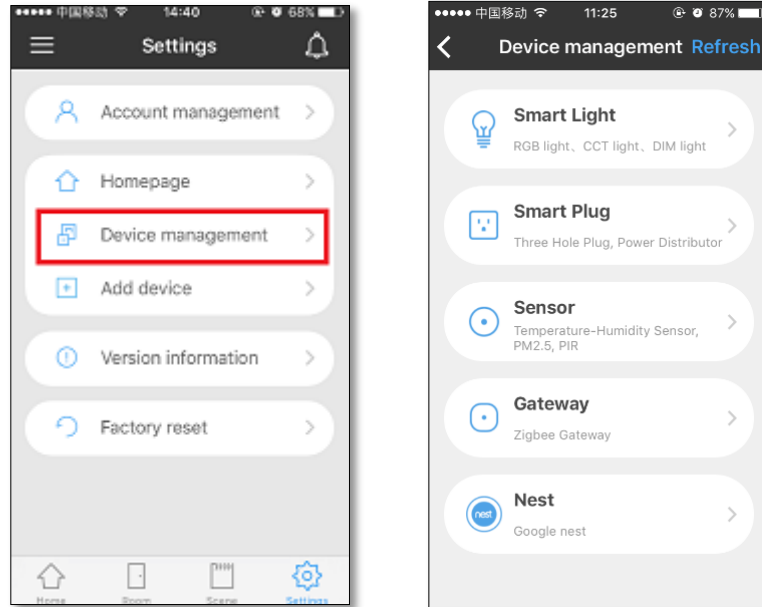


2. Room ,scene and device that add or create already could be link to shortcut.

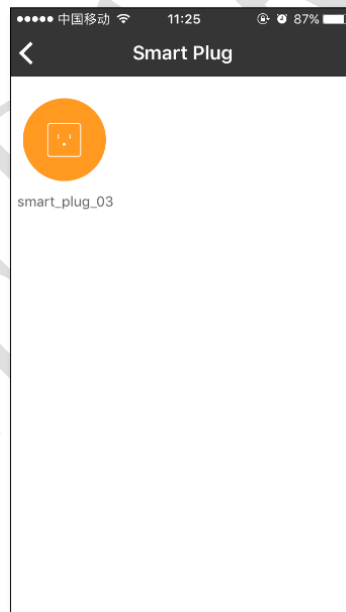


Settings

1. Device management is to manage devices that add to App.



2. Tap device icon to control device on/off, long press to enter to device edit interface.



Warning

1. This device complies with Part 15 of the FCC Rules. Operation is subject to the

following two conditions:

- (1) This device may not cause harmful interference.
- (2) This device must accept any interference received, including interference that may cause undesired operation.

Note: The grantee is not responsible for any changes or modifications not expressly approved by the party responsible for compliance. Such modifications could void the user' s authority to operate the equipment.

NOTE: This equipment has been tested and found to comply with the limits for a Class B digital device, pursuant to part 15 of the FCC Rules. These limits are designed to provide reasonable protection against harmful interference in a residential installation.

This equipment generates uses and can radiate radio frequency energy and, if not installed and used in accordance with the instructions, may cause harmful interference to radio communications. However, there is no guarantee that interference will not occur in a particular installation. If this equipment does cause harmful interference to radio or television reception, which can be determined by turning the equipment off and on, the user is encouraged to try to correct the interference by one or more of the following measures:

- Reorient or relocate the receiving antenna.
- Increase the separation between the equipment and receiver.

-Connect the equipment into an outlet on a circuit different from that to which the receiver is connected.

-Consult the dealer or an experienced radio/TV technician for help

RF Exposure Statement

This equipment complies with FCC radiation exposure limits set forth for an uncontrolled environment. This equipment should be installed and operated with minimum distance of 20 cm between the radiator and your body.

IC Statement

This device complies with Industry Canada licence-exempt RSS standard(s). Operation is subject to the following two conditions: (1) this device may not cause harmful interference, and (2) this device must accept any interference received, including interference that may cause undesired operation.

Le présent appareil est conforme aux CNR d'Industrie Canada applicables aux appareils radio exempts de licence. L'exploitation est autorisée aux deux conditions suivantes :

(1) l'appareil ne doit pas produire de brouillage, et

(2) l'utilisateur de l'appareil doit accepter tout brouillage radioélectrique subi, même si le brouillage est susceptible d'en compromettre le fonctionnement.

IC 20cm RF

This equipment complies with IC radiation exposure limits set forth for an uncontrolled environment. This equipment should be installed and operated with minimum distance of 20 cm between the radiator and your body.

LEEDARSON