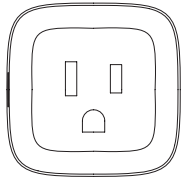


USER GUIDE

Smart Plug



THANK YOU

We appreciate the trust and confidence you have placed in Commercial Electric through the purchase of this Smart Plug. We strive to continually create quality products designed to enhance your home. Visit us online to see our full line of products available for your home improvement needs. Thank you for choosing Commercial Electric!

Safety Information



WARNING: For indoor use only. Do not use in wet locations. The total current limit of the device is 15Amp. To avoid damage, Do not exceed the 10 Amps limit. If a direct short is created on the output, the Smart Plug will be damaged and no longer function. Do not disassemble the product, or make repairs yourself. You run the risk of electric shock and voiding the limited warranty. If you need service, please contact the after sales services.

Warranty

1 YEAR LIMITED WARRANTY

This product is guaranteed to be free of defects in materials and workmanship for 1 year from the date of purchase. Guarantee does not include normal wear and tear, bulbs or batteries.



FCC Regulation

FCC ID: 2AB2Q7HPLWA1

This equipment complies with FCC radiation exposure limits set forth for an uncontrolled environment. This equipment should be installed and operated with a minimum distance of 20cm between the radiator and any part of your body. This device complies with Part 15 of the FCC Rules. Operation is subject to the following two conditions: (1) This device may not cause harmful interference. (2) This device must accept any interference received, including interference that may cause undesired operation.

Note: Changes or modifications not expressly approved by the part responsible for compliance could void the user's authority to operate the equipment.

Note: This equipment has been tested and found to comply with the limits for a Class B digital device, pursuant to part 15 of the FCC Rules. These limits are designed to provide reasonable protection against harmful interference in a residential installation. This equipment generates uses and can radiate radio frequency energy and, if not installed and used in accordance with the instructions, may cause harmful interference to radio communications. However, there is no guarantee that interference will not occur in a particular installation. If this equipment does cause harmful interference to radio or television reception, which can be determined by turning the equipment off and on, the user is encouraged to try to correct the interference by one or more of the following measures:

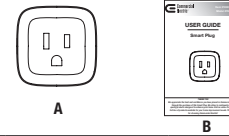
Reorient or relocate the receiving antenna.

Increase the separation between the equipment and receiver.

Connect the equipment into an outlet on a circuit different from that to which the receiver is connected.

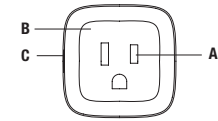
Consult the dealer or an experienced radio/TV technician for help.

Package Contents



Part	Description	Quantity
A	Smart Plug	1
B	User Guide	1

Package Contents



The Smart Plug makes your appliances controllable by using the Hubspace app on your mobile device, while you are at home or away. You can also turn appliances on or off automatically by using the programmable timer function and monitor the energy consumption of the connected appliance.

Part	Description
A	Power Socket
B	Indicator Light
C	Power Button/Reset Button

LED Indicator: Under normal working state.

Green Slow Blink	Plug initiated, is ready to start plug network configuration
Green Quick Blink	Connecting to the network or disconnected from a 2.4GHz Wireless network
Green Solid	Connected to the network and plug is turned on
Orange Slow Blink	Factory reset or firmware update
Off	The smart plug is switched off

Input	120VAC, 60Hz, 10A
Output	120VAC, 10A Maximum load
Operating Temperature	32°–95° F
Operating Humidity	5–85% RH, Non-condensing
Certification	FCC, UL

Quick Start Guide

Quick Start Guide

Set up and control your product from the palm of your hand with the Hubspace app. Download the app to monitor and manage your smart devices.

Step 1: Create an account and sign in.

Step 2: From the home screen press the "+" symbol in the upper right hand corner.

Step 3: Follow the in-app instructions to complete setup.



Please note: Follow the guide in app to connect the smart plug to 2.4GHz Wireless network. You will find SmartPlug-xxxx' during the connecting process. The number of xxxx is the last 4 number of MAC which marked on the plug.



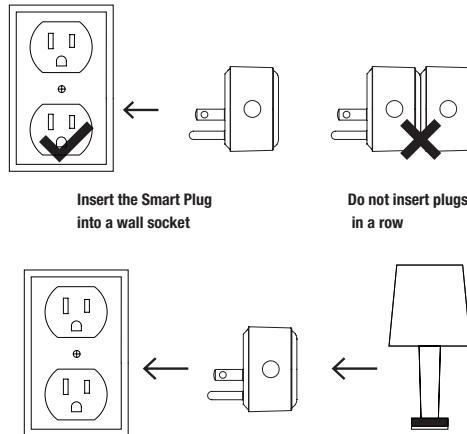
Questions, problems, missing parts? Before returning to the store, call Defiant Customer Service
8 a.m. - 7 p.m., EST, Monday-Friday, 9 a.m. - 6 p.m., EST, Saturday

1-866-308-3976

HOMEDEPOT.COM

Retain this manual for future use.

Installation



Insert the Smart Plug into a wall socket

Do not insert plugs in a row

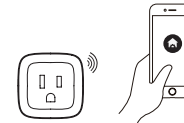
Insert the plug into the socket. The plug is now ready to use

You can now plug in the required electrical appliance

Operation

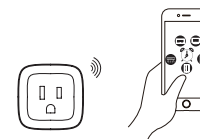
Using the Smart Plug

Remote Control: Turn your electronic device on and off from anywhere using the mobile App.



Schedule: The Smart Plug has a control setting that can be set like a timer and will automatically turn off once it reaches the programmed time.

Timer Countdown: The Smart Plug also features an automatic timer. It allows you to pre-schedule specific times when a connected device will turn off.



Control with your Voice: Work with Amazon Alexa and Google Assistant to manage your devices through Voice Control.



Troubleshooting

Problem	Solution
What devices can be controlled with the Smart Plug?	<ul style="list-style-type: none"> You can control lights, fans, humidifiers, portable heaters, and any small appliances in accordance with the Smart Plug's specifications.
What happens if the Smart Plug configuration process fails and the LED indicator always blinks green.	<ul style="list-style-type: none"> Check for interference or relocate the Smart Plug to another location within the signal range. Make sure that you connect the Smart Plug to the 2.4GHz Wireless network. Reset the Smart Plug to factory setting and Repeat the plug network configuration process.
How does the Smart Plug get restored to factory settings?	<ul style="list-style-type: none"> Press and hold the Power button until the LED blinks Orange (about 5 seconds) to reset the Smart Plug to factory defaults. Once reset finished successfully the LED will blink Green Slowly.