

WHAT'S INCLUDED

- Bright Tunes - Strand of LED Lights with 4 Built-In Bluetooth Speakers
- Quick Start Guide
- Manual
- Replacement Fuse (1) and Replacement Bulbs (2)

OPERATION

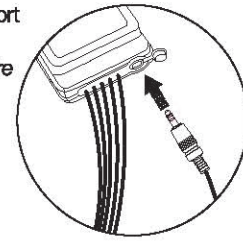
Using Bright Tunes via Bluetooth:

1. Plug Bright Tunes into any wall outlet (all the string lights will illuminate).
2. Bright Tunes will automatically begin searching in Bluetooth mode and the LED on the control box will flash Blue.
3. Activate Bluetooth on your favorite device (smartphone, tablet, laptop, etc.).
4. Search for **"Bright Tunes"** on your device and pair.
(If you are asked for a password, enter 0000.)
5. Once pairing is complete, you will hear an audible beep and the Blue LED will stop blinking and remain lit.
6. Press play on your device to start streaming music wirelessly to Bright Tunes.
Please note: Bright Tunes will wirelessly stream your music up to 33ft away (without obstacles), if static or interference occurs, please move your external music device closer to improve the signal.

Using Bright Tunes via Aux-In:

1. Plug Bright Tunes into any wall outlet (all the string lights will illuminate).
2. Plug an Aux-In cable (not included) into the open port of the control box. *Please note: There is a rubber gasket for weatherproof purposes and this will require the user to press firmly to insert the Aux-In cable. DO NOT use the Aux-In cable at the end of the string lights, this is ONLY for connecting multiple strands of Bright Tunes together.*
3. Plug the Aux-In cable into the headphone jack or Aux-In socket of your external device.
4. Lower volume on your external device and start playing your favorite music. Adjust your volume accordingly.

Please note: If you are experiencing static, interference, low volume, or no sound, check the Aux-In connection on the control box and make sure the cable is fully inserted past the weatherproof seal.



CONNECTING MULTIPLE STRANDS

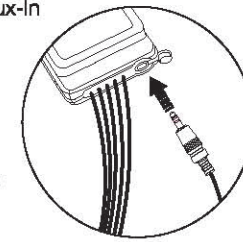
Easily connect multiple strands of Bright Tunes together OR connect to any of your existing string lights (Incandescent or LED). Before connecting multiple strands of lights, you **MUST** read below to understand the proper wattage requirements for each use.

WATTAGE CAUTIONS - Each strand of LED Bright Tunes uses 16.8W (DO NOT exceed 216W.) If connecting to string lights that do not have a Wattage (W) rating (found on the tag within 6 inches from the plug), calculate the wattage as follows: Multiply the current (___A) which is on the flag-type tag by 120. **For example:** Lighting strand is rated 120V, 60Hz, 0.2Amps. $0.2 \times 120 = 24$ Watts. Add the wattage of all the string lights together for a total of 216W or less. (DO NOT exceed 216W)

Connect multiple Bright Tunes together:

You can connect 5 sets of Bright Tunes together for increased surround sound and enhanced lighting.

1. Plug in the first strand of Bright Tunes and then locate the female wall plug and Aux-In connector at the opposite end of the light strand.
2. Plug female wall plug into the male wall plug on the next set of Bright Tunes.
3. Remove the weatherproof cover and plug the Aux-In connector into the second Bright Tunes control box. *Please note: There is a rubber gasket for weatherproof purposes and this will require the user to press firmly to insert the Aux-In cable.*
4. Repeat steps 2-3 for additional strands.
5. Pair with your Bluetooth device or plug in Aux-In cable (not included) to the first control box to start playing music.



Connect Bright Tunes to other string lights:

You can connect Bright Tunes with additional string lights (Incandescent or LED) **See "WATTAGE CAUTIONS" above for safe wattage requirements.**

1. If connecting multiple sets of Bright Tunes, please follow the steps above.
2. To connect additional string lights, locate the female plug on the opposite end of the Bright Tunes strand and plug in your additional lights.
3. Pair with your Bluetooth device or plug in an Aux-In cable (not included) to the first control box to start playing music. *Please note: DO NOT use the*

Aux-In cable at the end of the string lights, this is ONLY for connecting multiple strands of Bright Tunes together. There is a rubber gasket for weatherproof purposes and this will require the user to press firmly to insert the Aux-In cable.

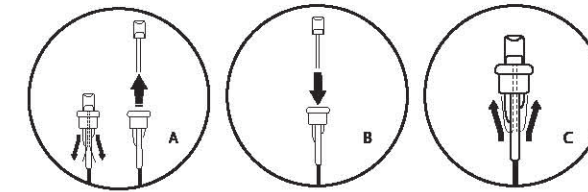
USER SERVICING INSTRUCTIONS

Replace the lamp:

1. Grasp plug and remove from the receptacle or other outlet device. Do not unplug by pulling on the cord.
2. Pull lamp and plastic base straight out of lamp holder.
3. Replace lamp with only 3V, 0.075W LED type lamp (provided with product).

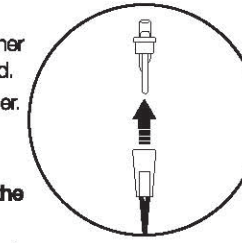
If the new plastic lamp base does not fit, follow the steps below before step 3.

- A. Remove the base of burned out lamp by straightening the lamp leads and gently pulling the lamp out.
- B. Thread leads of new lamp through holes in old base with one lead in each hole.
- C. After the lamp is fully inserted into the base, bend each lead up, like other lamps in the light set so that the leads will touch the contacts inside the lamp holder.

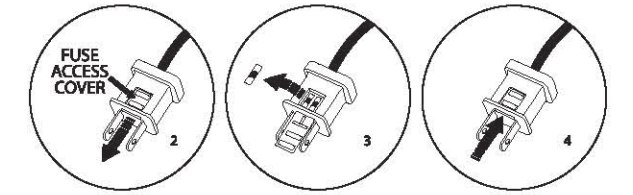


Replace the fuse:

1. Grasp plug and remove from the receptacle or other outlet device. Do not unplug by pulling on the cord.
2. To open the fuse cover, slide open fuse access cover on the top of the attachment plug towards the blades.
3. Remove the damaged fuse carefully. Use an electronic pen or small screw driver to lift up one end of the fuse from the fuse holder.
4. Risk of fire. Replace fuse ONLY with 3A, 125V fuse (provided with product).



5. Close fuse cover. Slide closed the fuse access cover on top of attachment plug. Risk of fire. Do not replace attachment plug. Contains a safety device (fuse) that should not be removed. Discard product if the attachment plug is damaged.



INDOOR / OUTDOOR USE

Please note that this product can be used indoors or outdoors. DO NOT fully submerge Bright Tunes into any liquid. If you feel the product was significantly wet, make sure to thoroughly dry before use.

SPECIFICATIONS

- Power source: AC 120V~60 Hz, 0.14A, 16.8W
- Total 8 Meters from the male plug to female plug
- Total 80 bulbs from 1st bulb to last bulb
- LED color: Warm white
- Speaker: 4 x 2W speaker
- Unit Weight for LED: Est. 610g
- Indoor/Outdoor Use
- Maximum total number of connected Bright Tunes: 5 Sets
If connecting standard string lights (Incandescent or LED), please review WATTAGE CAUTIONS section for proper wattage safety requirements.
- Distance between bulbs: 90mm (+/-5mm) 80 PCS
- Life span of LED bulbs: 20,000 hours

IMPORTANT SAFETY INSTRUCTIONS

a) READ AND FOLLOW ALL SAFETY INSTRUCTIONS.

- a) Do not use seasonal products outdoors unless marked suitable for indoor and outdoor use. When products are used in outdoor applications, connect the product to a Ground Fault Circuit Interrupting (GFCI) outlet. If one is not provided, contact a qualified electrician for proper installation.
- c) This seasonal use product is not intended for permanent installation or use.
- d) Do not mount or place near gas or electric heaters, fireplaces, candles or other similar sources of heat.
- e) Do not secure the wiring of the product with staples or nails, or place on sharp hooks or nails.
- f) Do not let lamps rest on the supply cord or on any wire.
- g) Unplug the product when leaving the house, or when retiring for the night, or if left unattended.
- h) This is an electric product – not a toy! To avoid risk of fire, burns, personal injury and electric shock it should not be played with or placed where small children can reach it.
- i) Do not use this product for other than its intended use.
- j) Do not hang ornaments or other objects from cord, wire, or light string.
- k) Do not close doors or windows on the product or extension cords as this may damage the wire insulation.
- l) Do not cover the product with cloth, paper or any material not part of the product when in use.
- m) This product is equipped with push-in type lamps. Do not twist lamps.
- n) This product employs overload protection (fuse). A blown fuse indicates an overload or short-circuit situation. If the fuse blows, unplug the product from the outlet. Also unplug any additional strings or products that may be attached to the product. Replace the fuse as per the user servicing instructions (follow product marking for proper fuse rating) and check the product. If the replacement fuse blows, a short-circuit may be present and the product should be discarded.
- o) Read and follow all instructions that are on the product or provided with the product.

p) SAVE THESE INSTRUCTIONS.

USE AND CARE INSTRUCTIONS

- a) When the product is placed on a live tree, the tree should be well maintained and fresh. Do not place on live trees in which the needles are brown or break off easily. Keep the tree holder filled with water.
- b) If the product is placed on a tree, the tree should be well secured and stable.
- c) Before using or reusing, inspect product carefully. Discard any products that have cut, damaged, or frayed wire insulation or cords, cracks in the lamp holders or enclosures, loose connections, or exposed copper wire.
- d) When storing the product, carefully remove the product from wherever it is placed, including trees, branches, or bushes, to avoid any undue strain or stress on the product conductors, connections, and wires.
- e) When not in use, store neatly in a cool, dry location protected from sunlight.

FCC STATEMENT

This device complies with Part 15 of the FCC Rules. Operation is subject to the following two conditions: (1) This device may not cause harmful interference, and (2) this device must accept any interference received, including interference that may cause undesired operation.

NOTE: This equipment has been tested and found to comply with the limits for a Class B digital device, pursuant to Part 15 of the FCC Rules. These limits are designed to provide reasonable protection against harmful interference in a residential installation. This equipment generates uses and can radiate radio frequency energy and, if not installed and used in accordance with the instructions, may cause harmful interference to radio communications. However, there is no guarantee that interference will not occur in a particular installation. If this equipment does cause harmful interference to radio or television reception, which can be determined by turning the equipment off and on, the user is encouraged to try to correct the interference by one of the following measures:

- Reorient or relocate the receiving antenna.
- Increase the separation between the equipment and receiver.
- Connect the equipment into an outlet on a circuit different from that to which the receiver is connected.
- Consult the dealer or an experienced radio/TV technician for help.

WARNING: Any changes or modifications not expressly approved by the party responsible for compliance could void the user's authority to operate this equipment.

This device must not be co-located or operating in conjunction with any other antenna or transmitter. This device complies with FCC and IC radiation exposure limits set forth for an uncontrolled environment. The device should be installed and operated with a minimum distance of 20cm between the radiator and your body.

Model:

BRT-200-GG-80

USER MANUAL

WHAT'S INCLUDED

- Bright Tunes - Strand of Incandescent Lights with 4 Built-in Bluetooth Speakers
- Quick Start Guide
- Manual
- Replacement Fuse (1) and Replacement Bulbs (2)

OPERATION

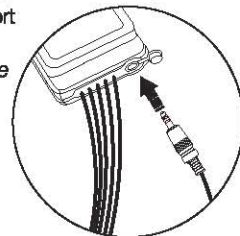
Using Bright Tunes via Bluetooth:

1. Plug Bright Tunes into any wall outlet (all the string lights will illuminate).
2. Bright Tunes will automatically begin searching in Bluetooth mode and the LED on the control box will flash Blue.
3. Activate Bluetooth on your favorite device (smartphone, tablet, laptop, etc.).
4. Search for "Bright Tunes" on your device and pair.
(If you are asked for a password, enter 0000.)
5. Once pairing is complete, you will hear an audible beep and the Blue LED will stop blinking and remain lit.
6. Press play on your device to start streaming music wirelessly to Bright Tunes.
Please note: Bright Tunes will wirelessly stream your music up to 33ft away (without obstacles), if static or interference occurs, please move your external music device closer to improve the signal.

Using Bright Tunes via Aux-In:

1. Plug Bright Tunes into any wall outlet (all the string lights will illuminate).
2. Plug an Aux-In cable (not included) into the open port of the control box. *Please note: There is a rubber gasket for weatherproof purposes and this will require the user to press firmly to insert the Aux-In cable. DO NOT use the Aux-In cable at the end of the string lights, this is ONLY for connecting multiple strands of Bright Tunes together.*
3. Plug the Aux-In cable into the headphone jack or Aux-In socket of your external device.
4. Lower volume on your external device and start playing your favorite music. Adjust your volume accordingly.

Please note: If you are experiencing static, interference, low volume, or no sound, check the Aux-In connection on the control box and make sure the cable is fully inserted past the weatherproof seal.



CONNECTING MULTIPLE STRANDS

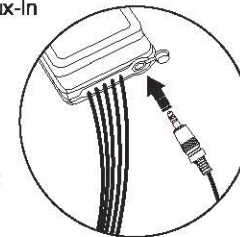
Easily connect multiple strands of Bright Tunes together OR connect to any of your existing string lights (Incandescent or LED). Before connecting multiple strands of lights, you MUST read below to understand the proper wattage requirements for each use.

WATTAGE CAUTIONS - Each strand of Incandescent Bright Tunes uses 69.6W (DO NOT exceed 216W.) If connecting to string lights that do not have a Wattage (W) rating (found on the tag within 6 inches from the plug), calculate the wattage as follows: Multiply the current (___A) which is on the tag-type tag by 120. **For example:** Lighting strand is rated 120V, 60Hz, 0.58 Amps. $0.2 \times 120 = 69.6$ Watts. Add the wattage of all the string lights together for a total of 216W or less. (DO NOT exceed 216W)

Connect multiple Bright Tunes together:

You can connect 3 sets of Bright Tunes together for increased surround sound and enhanced lighting.

1. Plug in the first strand of Bright Tunes and then locate the female wall plug and Aux-In connector at the opposite end of the light strand.
2. Plug female wall plug into the male wall plug on the next set of Bright Tunes.
3. Remove the weatherproof cover and plug the Aux-In connector into the second Bright Tunes control box. *Please note: There is a rubber gasket for weatherproof purposes and this will require the user to press firmly to insert the Aux-In cable.*
4. Repeat steps 2-3 for additional strands.
5. Pair with your Bluetooth device or plug in Aux-In cable (not included) to the first control box to start playing music.



Connect Bright Tunes to other string lights:

You can connect Bright Tunes with additional string lights (Incandescent or LED) See "WATTAGE CAUTIONS" above for safe wattage requirements.

1. If connecting multiple sets of Bright Tunes, please follow the steps above.
2. To connect additional string lights, locate the female plug on the opposite end of the Bright Tunes strand and plug in your additional lights.
3. Pair with your Bluetooth device or plug in an Aux-In cable (not included) to the first control box to start playing music. *Please note: DO NOT use the*

Aux-In cable at the end of the string lights, this is ONLY for connecting multiple strands of Bright Tunes together. There is a rubber gasket for weatherproof purposes and this will require the user to press firmly to insert the Aux-In cable.

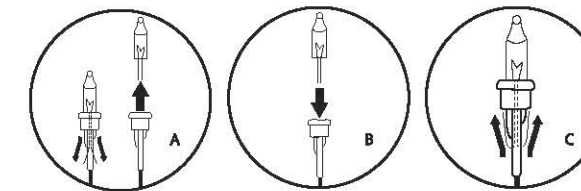
USER SERVICING INSTRUCTIONS

Replace the lamp:

1. Grasp plug and remove from the receptacle or other outlet device. Do not unplug by pulling on the cord.
2. Pull lamp and plastic base straight out of lamp holder.
3. Replace lamp with only 6V, 0.72W incandescent type lamp (provided with product).

If the new plastic lamp base does not fit, follow the steps below before step 3.

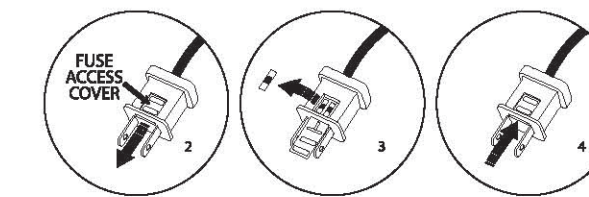
- A. Remove the base of burned out lamp by straightening the lamp leads and gently pulling the lamp out.
- B. Thread leads of new lamp through holes in old base with one lead in each hole.
- C. After the lamp is fully inserted into the base, bend each lead up, like other lamps in the light set so that the leads will touch the contacts inside the lamp holder.



Replace the fuse:

1. Grasp plug and remove from the receptacle or other outlet device. Do not unplug by pulling on the cord.
2. To open the fuse cover, slide open fuse access cover on the top of the attachment plug towards the blades.
3. Remove the damaged fuse carefully. Use an electronic pen or small screw driver to lift up one end of the fuse from the fuse holder.
4. Risk of fire. Replace fuse ONLY with 3A, 125V fuse (provided with product).

5. Close fuse cover. Slide closed the fuse access cover on top of attachment plug. **Risk of fire. Do not replace attachment plug. Contains a safety device (fuse) that should not be removed. Discard product if the attachment plug is damaged.**



INDOOR / OUTDOOR USE

Please note that this product can be used indoors or outdoors. DO NOT fully submerge Bright Tunes into any liquid. If you feel the product was significantly wet, make sure to thoroughly dry before use.

SPECIFICATIONS

- Power source: AC 120V-60 Hz, 0.58A, 69.6W
- Total 8 Meters from the male plug to female plug
- Total 80 bulbs from 1st bulb to last bulb
- LED color: Warm white or multi-colored
- Speaker: 4 x 2W speaker
- Unit Weight for Incandescent: Est. 590g
- Indoor/Outdoor Use
- Maximum total number of connected Bright Tunes: 3 Sets
If connecting standard string lights (Incandescent or LED), please review WATTAGE CAUTIONS section for proper wattage safety requirements.
- Distance between bulbs: 90mm (+/-5mm) 80 PCS
- Life span of Incandescent bulbs: 2,000 hours

IMPORTANT SAFETY INSTRUCTIONS

- a) **READ AND FOLLOW ALL SAFETY INSTRUCTIONS.**
- b) Do not use seasonal products outdoors unless marked suitable for indoor and outdoor use. When products are used in outdoor applications, connect the product to a Ground Fault Circuit Interrupting (GFCI) outlet. If one is not provided, contact a qualified electrician for proper installation.
- c) This seasonal use product is not intended for permanent installation or use.
- d) Do not mount or place near gas or electric heaters, fireplaces, candles or other similar sources of heat.
- e) Do not secure the wiring of the product with staples or nails, or place on sharp hooks or nails.
- f) Do not let lamps rest on the supply cord or on any wire.
- g) Unplug the product when leaving the house, or when retiring for the night, or if left unattended.
- h) This is an electric product – not a toy! To avoid risk of fire, burns, personal injury and electric shock it should not be played with or placed where small children can reach it.
- i) Do not use this product for other than its intended use.
- j) Do not hang ornaments or other objects from cord, wire, or light string.
- k) Do not close doors or windows on the product or extension cords as this may damage the wire insulation.
- l) Do not cover the product with cloth, paper or any material not part of the product when in use.
- m) This product is equipped with push-in type lamps. Do not twist lamps.
- n) This product employs overload protection (fuse). A blown fuse indicates an overload or short-circuit situation. If the fuse blows, unplug the product from the outlet. Also unplug any additional strings or products that may be attached to the product. Replace the fuse as per the user servicing instructions (follow product marking for proper fuse rating) and check the product. If the replacement fuse blows, a short-circuit may be present and the product should be discarded.
- o) Read and follow all instructions that are on the product or provided with the product.
- p) **SAVE THESE INSTRUCTIONS.**

USE AND CARE INSTRUCTIONS

- a) When the product is placed on a live tree, the tree should be well maintained and fresh. Do not place on live trees in which the needles are brown or break off easily. Keep the tree holder filled with water.
- b) If the product is placed on a tree, the tree should be well secured and stable.
- c) Before using or reusing, inspect product carefully. Discard any products that have cut, damaged, or frayed wire insulation or cords, cracks in the lamp holders or enclosures, loose connections, or exposed copper wire.
- d) When storing the product, carefully remove the product from wherever it is placed, including trees, branches, or bushes, to avoid any undue strain or stress on the product conductors, connections, and wires.
- e) When not in use, store neatly in a cool, dry location protected from sunlight.

FCC STATEMENT

This device complies with Part 15 of the FCC Rules. Operation is subject to the following two conditions: (1) This device may not cause harmful interference, and (2) this device must accept any interference received, including interference that may cause undesired operation.

NOTE: This equipment has been tested and found to comply with the limits for a Class B digital device, pursuant to Part 15 of the FCC Rules. These limits are designed to provide reasonable protection against harmful interference in a residential installation. This equipment generates uses and can radiate radio frequency energy and, if not installed and used in accordance with the instructions, may cause harmful interference to radio communications. However, there is no guarantee that interference will not occur in a particular installation. If this equipment does cause harmful interference to radio or television reception, which can be determined by turning the equipment off and on, the user is encouraged to try to correct the interference by one of the following measures:

- Reorient or relocate the receiving antenna.
- Increase the separation between the equipment and receiver.
- Connect the equipment into an outlet on a circuit different from that to which the receiver is connected.
- Consult the dealer or an experienced radio/TV technician for help.

WARNING: Any changes or modifications not expressly approved by the party responsible for compliance could void the user's authority to operate this equipment.

This device must not be co-located or operating in conjunction with any other antenna or transmitter. This device complies with FCC and IC radiation exposure limits set forth for an uncontrolled environment. The device should be installed and operated with a minimum distance of 20cm between the radiator and your body.