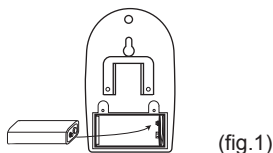
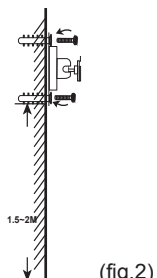


INSTALLATION

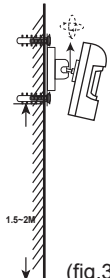
1. Remove the screw from the battery compartment cover. (fig.1)



2. Install an alkaline 9V battery.
3. Replace the battery cover and screw.
4. Mount the wireless motion detector sensor- Choose a suitable location, 5 - 6 feet (1.5 - 2.0 meters) away from floor, then use the swivel wall mount bracket template provided to mark location, drill holes and install anchors and fixture the bracket by screws. Place the main unit into the bracket and slide it down to secure in place (fig 2).you can adjustable bracket obtain the best coverage of the intended protected area.(Fig 3)



(fig.2)



(fig.3)

LEARNING CODE TO MAIN UNIT

The motion detector sensor compatible T015, T016, T018 main unit, must learn code to main unit then use, learn code operation see main unit manual.

WALK TESTING MOTION DETECTOR SENSOR

After select a location, you should test the sensor transmitting range before mount it permanently, turn the CHIME switch to ON of T015, T016 main unit or press HOME button of T018 main unit, then swing at sensor lens by hand, you will hear the main unit sounds "DING DONG" chime if signal is received successfully, if not, change location is required.

You can then test the sensor detection area. Temporarily place the detector at the mounting location and the chime sound

will be heard from the main unit. If you walk beyond the sensor detection area, then there will not be a chime sound, by adjusting the sensor direction, or the installation location, you can get you desired detection area coverage.

BATTERY LOW INDICATOR

When 9V battery goes low, the LED will light on 3 seconds and off 1 second, change a new alkaline 9V battery immediately, or the sensor might not detection properly.

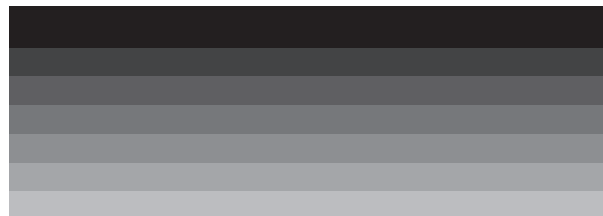
Warning:

Changes or modifications to this unit not expressly approved by the party responsible for compliance will void the user's authority to operate the equipment. Any change to the equipment will void FCC grant.

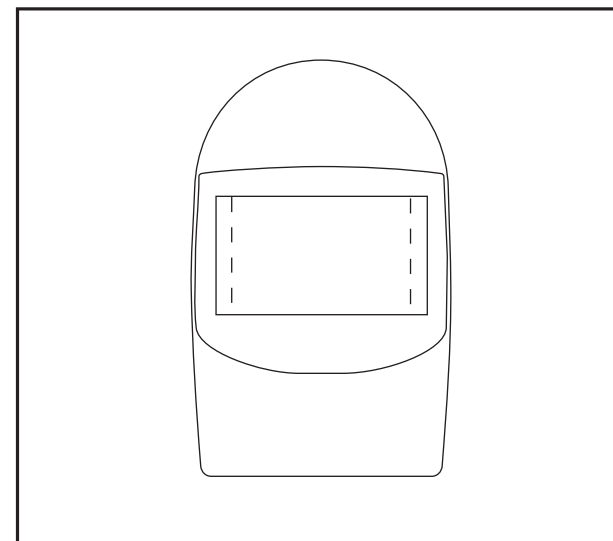
This equipment has been tested and found to comply with the limits for a Class C digital device, pursuant to part 15 of the FCC Rules. These limits are designed to provide reasonable protection against harmful interference in a residential installation. This equipment generates, uses and can radiate radio frequency energy and, if not installed and used in accordance with the instructions, may cause harmful interference to radio communications. However, there is no guarantee that interference will not occur in a particular installation. If this equipment does cause harmful interference to radio or television reception, which can be determined by turning the equipment off and on, the user is encouraged to try to correct the interference by one or more of the following measures:

- Reorient or relocate the receiving antenna.
- Increase the separation between the equipment and receiver.
- Connect the equipment into an outlet on a circuit different from that to which the receiver is connected.
- Consult the dealer or an experienced radio/TV technician for help.

This device complies with Part 15 of the FCC Rules. Operation is subject to the following two conditions: (1) this device may not cause harmful interference, and (2) this device must accept any interference received, including interference that may cause undesired operation



WIRELESS MOTION DETECTOR SENSOR



OWNER'S MANUAL