


lenovo

Lenovo A2010

Quick Start Guide

 Read this guide carefully before using your smartphone.

Technical specifications



Model and system

Model: Lenovo A2010-I

System: Android



Dimensions and weight

Height: 130.5 mm (5.14 inches)

Width: 66.6 mm (2.62 inches)

Depth: 9.98 mm (0.39 inches)

Weight: 137 g (0.30 lb)



Processor

Processor: MTK MT6735m, Quad Core, 1.0 GHz



Camera

Type: CMOS

Pixels: 5.0 megapixels (back) + 2.0 megapixels (front)



Battery

Battery: 2000 mAh



Display

Size: 114.3 mm (4.5 inches)

Screen: two-touch

Resolution: 854 × 480 pixels

LCD type: TN



Wireless Communication

Bluetooth 4.0; WLAN 802.11 b/g/n;

FDD-LTE, WCDMA, GSM; GPS



AC/DC adapter

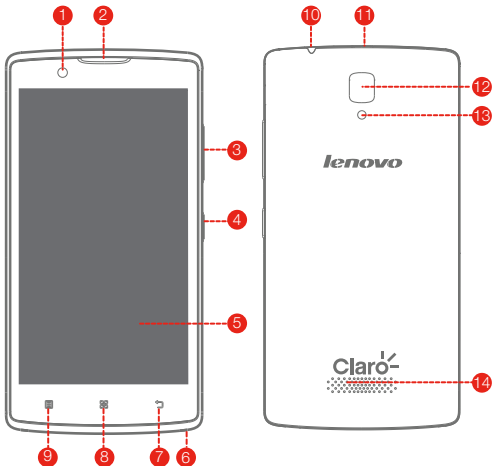
Input: 100-240 Vac 50/60 Hz 0.13 A

Output: 5.0 Vdc 1.0 A



① Depending on the measuring method, the dimensions and weight might vary slightly.

First glance



- | | | |
|-----------------------|------------------------|-----------------------|
| 1 Front-facing camera | 2 Receiver | 3 Volume buttons |
| 4 On/Off button | 5 Touch screen | 6 Microphone |
| 7 Back button | 8 Home button | 9 Menu button |
| 10 Headset connector | 11 Micro USB connector | 12 Rear-facing camera |
| 13 Flashlight | 14 Speaker | |

Preparing your smartphone

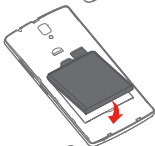
You must insert the SIM card provided by your carrier to use cellular services. Set up your smartphone as shown.



Step 1. Open the back cover.



Step 2. Insert the SIM card and the memory card.



Step 3. Install the battery.
a. Align the battery connectors on the battery with the pins in the battery compartment.
b. Push the battery down into place.



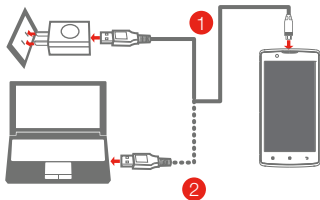
Step 4. Install the back cover.



Always turn off your smartphone first before you insert or remove a SIM card. Insert or remove a SIM card with your smartphone on may damage your SIM card or smartphone permanently.

Charging the battery


Charge the battery as shown.



Method 1. Connect your smartphone to a power outlet using the cable and USB power adapter that come with your smartphone.

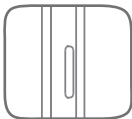
Method 2. Connect your smartphone to a computer using the cable that comes with your smartphone.

 Low battery power

 Fully charged

 Charging

Turning on or turning off your smartphone



Turn on: Press and hold the On/Off button until the Lenovo logo appears.

Turn off: Press and hold the On/Off button for a few seconds, then tap **Power off**.

 Your smartphone has a rechargeable battery. For more information about battery safety, see the “Rechargeable battery notice” in the *Important Product Information Guide* shipped with your smartphone.

Learning more

To learn more information about your Lenovo smartphone and obtain the latest smartphone manuals, go to:
<http://support.lenovo.com/>.

Getting support

For support on network service and billing, contact your wireless network operator. For instructions on how to use your device, go to: <http://support.lenovo.com/>.

Legal notices

Lenovo and the Lenovo logo are trademarks of Lenovo in the United States, other countries, or both.
Other company, product, or service names may be trademarks or service marks of others.

First Edition (October 2015) © Copyright Lenovo 2015.

Reduce | Reuse | Recycle



XXXXXXXXXX

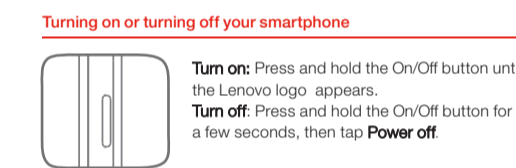
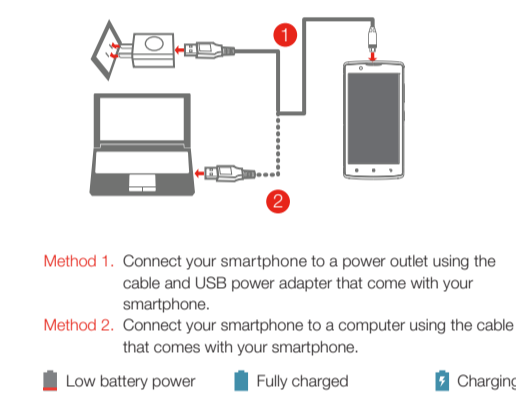
Printed in China

NOTES:

- 1、英文字体：Helvetica Neun LT Std (45light)
中文字体：汉仪中黑简体
- 2、模板中的“X”为可变量，需要以实际数据及信息为准
- 3、“First glance” & “Prepare your phone” & “Charging the battery” 三章中的描述以及图片需要以实际为准
- 4、编辑文字时，请不要移动或者改变原本的文字框的位置。
- 5、保证封面标识Lenovo Logo、产品名称，封底标识条码和料号。



Charging the battery



Your smartphone has a rechargeable battery. For more information about battery safety, see the "Rechargeable battery notes" in the Important Product Information Guide shipped with your smartphone.

Learning more

To learn more information about your Lenovo smartphone and obtain the latest smartphone manuals, go to <http://support.lenovo.com>.

Getting support
For support on network service and billing, contact your wireless network operator. For instructions on how to use your device, go to <http://support.lenovo.com>.

Legal notices
Lenovo and the Lenovo logo are trademarks of Lenovo in the United States, other countries, or both. Other company, product, or service names may be trademarks or service marks of others.



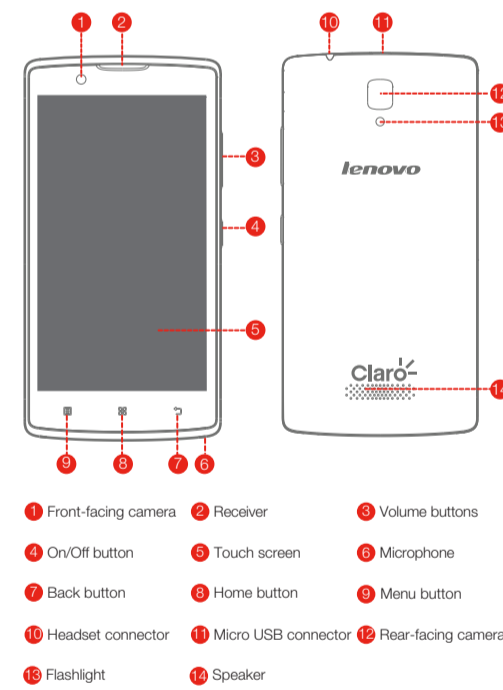
Lenovo A2010
Quick Start Guide

Read this guide carefully before using your smartphone.

Technical specifications

- Model and system: Model: Lenovo A2010 System: Android
 - Dimensions and weight: Height: 130.6 mm (5.14 inches) Width: 66.6 mm (2.62 inches) Depth: 9.98 mm (0.39 inches) Weight: 137 g (0.30 lb)
 - Processor: Processor: MTK MT6735m, Quad Core, 1.0 GHz
 - Camera: Type: CMOS Pixels: 5.0 megapixels (back) + 2.0 megapixels (front)
 - Battery: Battery: 2000 mAh
 - Display: Size: 11.43 mm (4.5 inches) Screen: two-touch Resolution: 854 x 480 pixels LCD type: TN
 - Wireless Communication: Bluetooth 4.0, WLAN 802.11 b/g/n, FDD-LTE, WCDMA, GSM, GPS
 - AC/DC adapter: Input: 100-240 Vac, 50/60 Hz, 0.13 A Output: 5.0 Vdc, 1.0 A
- ① Depending on the measuring method, the dimensions and weight might vary slightly.

First glance



Preparing your smartphone

- You must insert the SIM card provided by your carrier to use cellular services. Set up your smartphone as shown.
- Open the back cover.
 - Insert the SIM card and the memory card.
 - Install the battery.
 - Align the battery connectors on the battery with the pins in the battery compartment.
 - Push the battery down into place.
 - Install the back cover.
- Always turn off your smartphone first before you insert or remove a SIM card. Insert or remove a SIM card with your smartphone on may damage your SIM card or smartphone permanently.

pantone 424c

pantone 485c

pantone 484c

Designer	Luohongwei			Release	20131107		
PROJECT NAME	Lenovo XXXXX	MATERIAL	105G哑粉	FOLD	荷包折	Colour	
PART NAME	Quick Start Guide(110×74)	PROCESS	Cut	SURFACE	覆亚油	CMYK	
PART NUMBER	XXXXXXXXXX	SIZE	110×74(Close)		110×222(Open)	Unit:mm	