

lenovo

Lenovo S660

Quick Start Guide v1.0

 Read this guide carefully before using your device.

Technical specifications



Model and System

Model: Lenovo S660

System: Android 4.2



Size and Weight

Height: 137 mm (5.39 inches) Width: 68.8 mm (2.7 inches)

Depth: 9.95 mm (0.39 inches) Weight: 151 g



CPU and Capacity

CPU: MTK 6582m 1.3 GHz Quad Core

Capacity: 6 GB ROM + 1 GB RAM



Camera

Type: CMOS

Pixels: 6 MP (back) + 0.3 MP (front)



Power and Battery

Standby time: Up to 450 hours

Battery: 3000 mAh



Display

Size: 4.7 inches (diagonal)

Resolution: 960 x 540

Screen: Multi-Touch display

LCD type: IPS



Wireless Communication

*Bluetooth 4.0; WLAN 802.11 b/g/n; WCDMA, GSM; GPS



Actual product may differ.

*Launch with Android 4.2 which only supports BT 4.0 PXP profile.

First glance



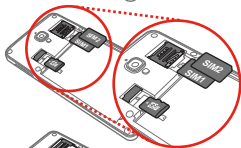
- | | | | | | |
|----|----------------|---|---------------|---|---------------|
| 1 | Receiver | 2 | Front camera | 3 | Microphone |
| 4 | Micro USB port | 5 | Earphone jack | 6 | Back camera |
| 7 | Flashlight | 8 | Speaker | 9 | On/Off button |
| 10 | Volume key | | | | |

Preparing your phone

You need to insert the SIM card provided by your carrier to use cellular services. Install your phone as shown.

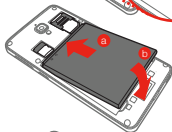


Step 1. Open the back cover.



Step 2. Insert the SIM cards and the memory card.

TIP: Insert the SIM1 (USIM) card into SIM1 slot and SIM2 card into SIM2 slot.



Step 3. Install the battery.

Align the battery connectors on the battery with the pins in the battery compartment. Then push the battery down into place.

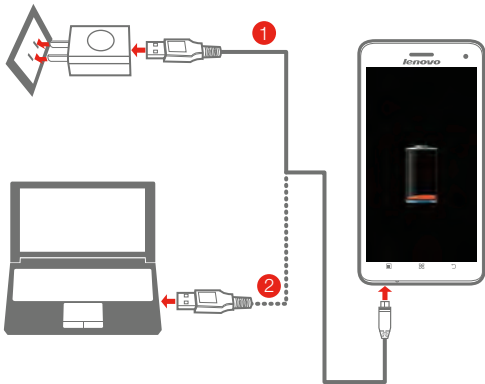


Step 4. Install the back cover.

 **DO NOT** insert or remove the SIM cards while your phone is turned on. Doing so may permanently damage your SIM cards or your phone.

Charging the battery


Charge the battery as shown.




Method 1. Connect your phone to a power outlet using the included cable and USB power adapter.

Method 2. Charge the battery using a computer.

 Low battery

 Fully charged

 Charging

 Your device has a rechargeable battery. For more information about battery safety, see “Rechargeable battery notice” in the *Important Product Information Guide*.

Learn more

For more information about Lenovo Mobile Phone functions, Regulatory Notices and other useful manuals, go to <http://support.lenovo.com/>.

Getting support

For support on network service and billing, please contact your wireless network operator. For instructions on how to use your device, go to <http://support.lenovo.com/>.

Legal notices

Lenovo, the Lenovo logo are trademarks of Lenovo in the United States, other countries, or both. Other company, product, or service names may be trademarks or service marks of others.

First Edition (February 2014) © Copyright Lenovo 2014.

Reduce | Reuse | Recycle



XXXXXXXXXX

Printed in China