

lenovo

Lenovo S856

Quick Start Guide v1.0

English/Español

FCC Regulations

This mobile phone complies with part 15 of the FCC Rules. Operation is subject to the following two conditions: (1) This device may not cause harmful interference, and (2) this device must accept any interference received, including interference that may cause undesired operation.

This mobile phone has been tested and found to comply with the limits for a Class B digital device, pursuant to Part 15 of the FCC Rules. These limits are designed to provide reasonable protection against harmful interference in a residential installation. This equipment generates, uses and can radiate radio frequency energy and, if not installed and used in accordance with the instructions, may cause harmful interference to radio communications. However, there is no guarantee that interference will not occur in a particular installation. If this equipment does cause harmful interference to radio or television reception, which can be determined by turning the equipment off and on, the user is encouraged to try to correct the interference by one or more of the following measures:

- Reorient or relocate the receiving antenna.
- Increase the separation between the equipment and receiver.
- Connect the equipment into an outlet on a circuit different from that to which the receiver is connected.
- Consult the dealer or an experienced radio/TV technician for help.

FCC Note:

Caution: Changes or modifications not expressly approved by the party responsible for compliance could void the user's authority to operate the equipment.

RF Exposure Information (SAR)

This phone is designed and manufactured not to exceed the emission limits for exposure to radio frequency (RF) energy set by the Federal Communications Commission of the United States.

During SAR testing, this device was set to transmit at its highest certified power level in all tested frequency bands, and placed in positions that simulate RF exposure in usage against the head with no separation, and near the body with the separation of 10 mm. Although the SAR is determined at the highest certified power level, the actual SAR level of the device while operating can be well below the maximum value. This is because the phone is designed to operate at multiple power levels so as to use only the power required to reach the network. In general, the closer you are to a wireless base station antenna, the lower the power output.

The exposure standard for wireless devices employing a unit of measurement is known as the Specific Absorption Rate, or SAR. The SAR limit set by the FCC is 1.6W/kg.

This device is complied with SAR for general population /uncontrolled exposure limits in ANSI/IEEE C95.1-1992 and had been tested in accordance with the measurement methods and procedures specified in IEEE1528. This device has been tested and meets the FCC RF exposure guidelines when tested with the device directly contacted to the body.

The FCC has granted an Equipment Authorization for this model phone with all reported SAR levels evaluated as in compliance with the FCC RF exposure guidelines. SAR information on this model phone is on file with the FCC and can be found under the Display Grant section of www.fcc.gov/oet/ea/fccid after searching on FCC ID: YCNS856.

For this device, the highest reported SAR value for usage against the head is 0.46 W/kg, for usage near the body is 1.44 W/kg.

While there may be differences between the SAR levels of various phones and at various positions, they all meet the government requirements.

SAR compliance for body-worn operation is based on a separation distance of 10 mm between the unit and the human body. Carry this device at least 10 mm away from your body to ensure RF exposure level compliant or lower to the reported level. To support body-worn operation, choose the belt clips or holsters, which do not contain metallic components, to maintain a separation of 10 mm between this device and your body.

RF exposure compliance with any body-worn accessory, which contains metal, was not tested and certified, and use such body-worn accessory should be avoided.

English

☑ Read this guide carefully before using your smartphone.

Learning more

To learn more information about your Lenovo smartphone and obtain the latest smartphone manuals, go to:
<http://support.lenovo.com/>.

Getting support

For support on network service and billing, contact your wireless network operator. For instructions on how to use your device, go to:
<http://support.lenovo.com/>.

Legal notices

Lenovo and the Lenovo logo are trademarks of Lenovo in the United States, other countries, or both. Other company, product, or service names may be trademarks or service marks of others. Manufactured under license from Dolby Laboratories. Dolby and the double-D symbol are trademarks of Dolby Laboratories.

Technical specifications



Model and system

Model: Lenovo S856

System: Android



Dimensions and weight

Height: 151 mm (5.94 inches)

Width: 77.8 mm (3.07 inches)

Depth: 8.95 mm (0.35 inch)

Weight: 175.5 g (0.39 lb)



Processor

Processor: MSM8926, Quad Core, 1.2 GHz

^② Capacity: 8 GB



Camera

Type: CMOS

Pixels: 8.0 megapixels (back) + 1.6 megapixels (front)



Battery

Battery: 2500 mAh



Display

Size: 5.5 inches

Screen: multi-touch

Resolution: 1280 x 720 pixels

LCD type: IPS



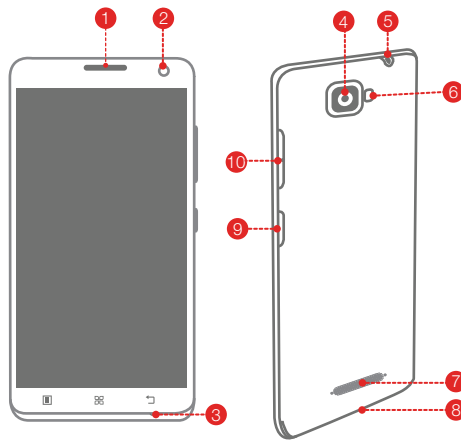
Wireless Communication

Bluetooth 4.0; WLAN 802.11 b/g/n; LTE FDD, WCDMA, GSM; GPS

- ① Depending on the measuring method, the dimensions and weight might vary slightly.

- ② Total memory 8 GB, available for user 4.33 GB.

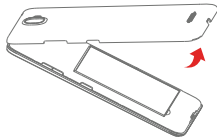
First glance



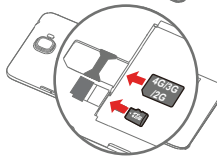
- | | | |
|----------------------|-----------------------|-----------------|
| 1 Receiver | 2 Front-facing camera | 3 Microphone |
| 4 Rear-facing camera | 5 Headset connector | 6 Flashlight |
| 7 Speaker | 8 Micro USB connector | 9 On/Off button |
| 10 Volume buttons | | |

Preparing your smartphone

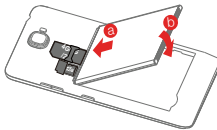
You must insert the SIM card provided by your carrier to use cellular services. Set up your smartphone as shown.



Step 1. Open the back cover.

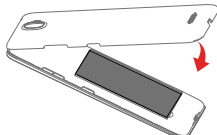


Step 2. Insert the SIM card and the memory card.



Step 3. Install the battery.

- a. Align the battery connectors on the battery with the pins in the battery compartment.
- b. Push the battery down into place.

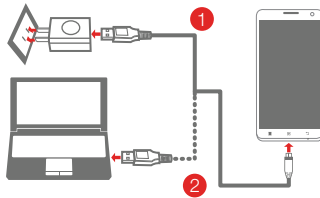


Step 4. Install the back cover.

ⓘ Always turn off your smartphone first before you insert or remove a SIM card. Insert or remove a SIM card with your smartphone on may damage your SIM card or smartphone permanently.

Charging the battery

Charge the battery as shown.



Method 1. Connect your smartphone to a power outlet using the cable and USB power adapter that come with your smartphone.

Method 2. Connect your smartphone to a computer using the cable that comes with your smartphone.

 Low battery power  Fully charged  Charging

Turning on or turning off your smartphone



Turn on: Press and hold the On/Off button until the Lenovo logo appears.

Turn off: Press and hold the On/Off button for a few seconds, then tap **Power off**.

 Your smartphone has a rechargeable battery. For more information about battery safety, see the "Rechargeable battery notice" in the *Important Product Information Guide* shipped with your smartphone.

Español

🕒 Lea esta guía con detenimiento antes de usar el teléfono inteligente.

- Más información** Para obtener más información sobre su teléfono inteligente Lenovo y obtener los manuales más actualizados, visite: <http://support.lenovo.com/>.
- Cómo obtener asistencia** Para obtener asistencia sobre el servicio de red y facturación, póngase en contacto con su operador de red inalámbrica. Para obtener instrucciones sobre cómo utilizar su dispositivo, visite: <http://support.lenovo.com/>.
- Aviso legal** Lenovo y el logo de Lenovo son marcas comerciales de Lenovo en América Latina, otros países o ambos. Otros nombres de servicio, empresa o producto pueden ser marcas comerciales o marcas de servicios de terceros. Manufactured under license from Dolby Laboratories. Dolby and the double-D symbol are trademarks of Dolby Laboratories.

Especificaciones técnicas



Modelo y sistema

Modelo: Lenovo S856

Sistema: Android



Dimensiones y peso

Alto: 151 mm (5,94 pulgadas) Ancho: 77,8 mm (3,07 pulgadas)

Profundo: 8,95 mm (0,35 pulgadas) Peso: 175,5 g (0,39 lb)



Procesador y capacidad

Procesador: MSM8926, Quad Core, 1,2 GHz

② Capacidad: 8 GB



Cámara

Tipo: CMOS

Píxeles: 8,0 megapíxeles (reverso) + 1,6 megapíxeles (frente)



Batería

Batería: 2500 mAh



Pantalla

Tamaño: 5,5 pulgadas

Pantalla: multitáctil

Resolución: 1280 x 720 píxeles

Tipo de LCD: IPS

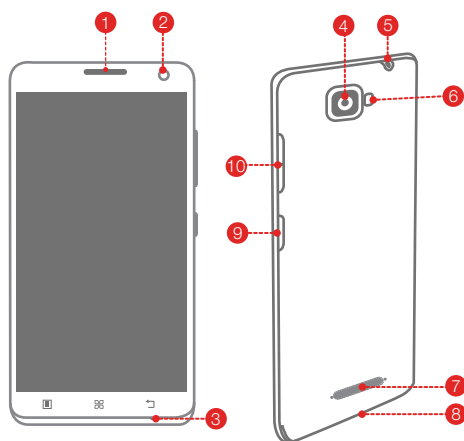


Comunicación inalámbrica

Bluetooth 4.0; WLAN 802.11 b/g/n; LTE FDD, WCDMA, GSM; GPS

- ① Según el método de medición, las dimensiones y el peso pueden variar levemente.
② Memoria total 8 GB, libres para el usuario 4,33 GB.

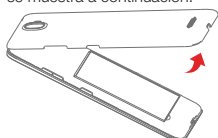
Primera mirada



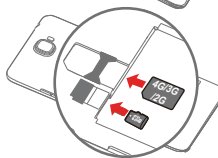
- | | | |
|-----------------------|---------------------------|-------------------------------|
| 1 Receptor | 2 Cámara frontal | 3 Micrófono |
| 4 Cámara trasera | 5 Conector de auriculares | 6 Linterna |
| 7 Parlante | 8 Conector micro USB | 9 Botón de Encendido/ Apagado |
| 10 Botones de volumen | | |

Preparar su teléfono inteligente

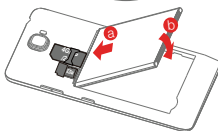
Debe insertar la tarjeta SIM proporcionada por su operador para utilizar los servicios de celular. Configure su teléfono inteligente como se muestra a continuación.



Paso 1. Abra la cubierta posterior.

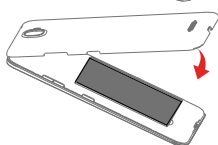


Paso 2. Inserte la tarjeta SIM y la tarjeta de memoria.



Paso 3. Instale la batería.

- a. Ubique los conectores de la batería en la misma posición que las clavijas del compartimento de la batería.
- b. Empuje la batería hasta que entre en su lugar.

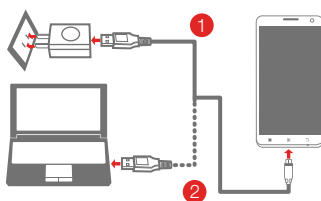


Paso 4. Instale la cubierta posterior.

ⓘ Recuerde siempre apagar su teléfono inteligente antes de insertar o quitar una tarjeta SIM. Insertar o quitar una tarjeta SIM con su teléfono inteligente encendido puede dañar de forma permanente a su tarjeta SIM o a su teléfono.

Cargar la batería

Cargue la batería como se indica.



Método 1. Conecte su teléfono inteligente a una toma de corriente con el adaptador de energía USB y el cable que se suministran con su teléfono inteligente.

Método 2. Conecte su teléfono inteligente a una computadora con el cable que se suministra con su teléfono inteligente.

Bateria baja Completamente cargada Cargando

Encender o apagar su teléfono inteligente



Encender: Presione y mantenga presionado el botón de Encendido/Apagado hasta que aparezca el logo de Lenovo.

Apagar: Presione y mantenga presionado el botón de Encendido/Apagado por unos pocos segundos, y pulse **Desconectar**.

● Su teléfono inteligente contiene una batería recargable. Para obtener más información sobre la seguridad de la batería, consulte "Aviso sobre la batería recargable" en la [Guía de información importante sobre el producto](#) que se incluye con su teléfono inteligente.

First Edition (November 2014) © Copyright Lenovo 2014.
Primera edición (Noviembre del 2014) © Copyright Lenovo 2014.

Reduce | Reuse | Recycle



HQ60111252000
Printed in China