

Lenovo ideapad 2in1 14 Hardware Maintenance Manual

Lenovo[™]

Note:

- Before using this information and the product it supports, be sure to read the general information under “Notices” on page 83.

First Edition (Aug. 2017)

© Copyright Lenovo 2017. All rights reserved.

LIMITED AND RESTRICTED RIGHTS NOTICE: If data or software is delivered pursuant a General Services Administration “GSA” contract, use, reproduction, or disclosure is subject to restrictions set forth in Contract No. GS-35F-05925.

© 2017 Lenovo

Contents

About this manual	iv	1050 PCI Express Mini Card for wireless LAN.....	36
Safety information	1	1060 Speakers	38
General safety	2	1070 DIMM	39
Electrical safety	3	1080 Fan and Heat Sink assembly.....	41
Safety inspection guide	5	1090 IO board.....	44
Handling devices that are sensitive to electrostatic discharge.....	6	1100 System board.....	46
Grounding requirements.....	6	1110 Upper case	48
Safety notices: multilingual translations.....	7	1120 DC-in cable	50
Laser compliance statement.....	14	1130 LCD unit.....	51
Important service information	16	1140 Camera board, sensor board and EDP cable.....	54
Strategy for replacing FRUs	16	1150 LCD hinges	58
Strategy for replacing a hard disk drive	17	1160 Fingerprint module (on select models)....	60
Important notice for replacing a system board	17	Locations	62
Important information about replacing RoHS compliant FRUs	18	Front and right-side view	62
General check out	19	Bottom and left-side view	63
What to do first	20	Rear view	64
Power system checkout.....	21	Parts list	65
Checking the AC adapter	21	Overall	66
Checking operational charging	22	LCD FRUs	77
Checking the battery pack	22	Miscellaneous parts.....	78
Related service information	23	AC adapters.....	79
Restoring the factory contents by using Recovery System	23	Screws.....	79
Restore of factory default	23	Power cords.....	80
Passwords	24	Notices	83
Power-on password.....	24	Trademarks	84
Hard-disk password.....	24		
Supervisor password.....	24		
Power management	25		
Putting the computer to sleep or shutting it down	25		
Putting your computer to sleep.....	25		
Shutting down the computer.....	25		
Lenovo ideapad 2in1 14	26		
Specifications	26		
Status indicators	27		
Keyboard function keys	28		
FRU replacement notices	29		
Screw notices	29		
Removing and replacing an FRU	30		
1010 Base cover.....	31		
1020 Battery pack.....	33		
1030 Solid state disk	34		
1040 Hard disk drive.....	35		

About this manual

This manual contains service and reference information for the following Lenovo products:

Lenovo ideapad 2in1 14

Use this manual to troubleshoot problems.

The manual is divided into the following sections:

- The common sections provide general information, guidelines, and safety information required for servicing computers.
- The product-specific section includes service, reference, and product-specific parts information.

Important:

This manual is intended only for trained servicers who are familiar with Lenovo products. Use this manual to troubleshoot problems effectively.

Before servicing a Lenovo product, make sure to read all the information under “Safety information” on page 1 and “Important service information” on page 16.

Safety information

This chapter presents the following safety information that you need to get familiar with before you service a Lenovo ideapad 2in1 14 computer:

- “General safety” on page 2
- “Electrical safety” on page 3
- “Safety inspection guide” on page 5
- “Handling devices that are sensitive to electrostatic discharge” on page 6
- “Grounding requirements” on page 6
- “Safety notices: multilingual translations” on page 7
- “Laser compliance statement” on page 14

General safety

Follow these rules below to ensure general safety:

- Observe a good housekeeping in the area where the machines are put during and after the maintenance.
- When lifting any heavy object:
 1. Make sure that you can stand safely without slipping.
 2. Distribute the weight of the object equally between your feet.
 3. Use a slow lifting force. Never move suddenly or twist when you attempt to lift it.
 4. Lift it by standing or pushing up with your leg muscles; this action could avoid the strain from the muscles in your back. Do not attempt to lift any object that weighs more than 16 kg (35 lb) or that you think is too heavy for you.
- Do not perform any action that causes hazards to the customer, or that makes the machine unsafe.
- Before you start the machine, make sure that other service representatives and the customer are not in a hazardous position.
- Please remove covers and other parts in a safe place, away from all personnel, while you are servicing the machine.
- Keep your toolcase away from walk areas so that other people will not trip over it.
- Do not wear loose clothing that can be trapped in the moving parts of the machine. Make sure that your sleeves are fastened or rolled up above your elbows. If your hair is long, fasten it.
- Insert the ends of your necktie or scarf inside clothing or fasten it with the nonconductive clip, about 8 centimeters (3 inches) from the end.
- Do not wear jewelry, chains, metal-frame eyeglasses, or metal fasteners for your clothing.

Attention: Metal objects are good electrical conductors.
- Wear safety glasses when you are hammering, drilling, soldering, cutting wire, attaching springs, using solvents, or working in any other conditions that may be hazardous to your eyes.
- After service, reinstall all safety shields, guards, labels, and ground wires. Replace any safety device that is worn or defective.
- Reinstall all covers correctly before returning the machine to the customer.
- Fan louvers on the machine help to prevent the overheating of internal components. Do not obstruct fan louvers or cover them with labels or stickers.

Electrical safety

Observe the following rules when working on electrical equipments.

Important:

Use only approved tools and test equipments. Some hand tools have handles covered with a soft material that does not insulate you when working with live electrical currents.

Many customers have rubber floor mats near their machines that contain small conductive fibers to decrease electrostatic discharges. Do not use such kind of mat to protect yourself from electrical shock.

- Find the room emergency power-off (EPO) switch, disconnecting switch or electrical outlet. If an electrical accident occurs, you can then operate the switch or unplug the power cord quickly.
- Do not work alone under hazardous conditions or near the equipment that has hazardous voltages.
- Disconnect all power before:
 - Performing a mechanical inspection
 - Working near power supplies
 - Removing or installing main units
- Before you start to work on the machine, unplug the power cord. If you cannot unplug it, ask the customer to power-off the wall box that supplies power to the machine, and to lock the wall box in the off position.
- If you need to work on a machine that has exposed electrical circuits, observe the following precautions:
 - Ensure that another person, familiar with the power-off controls, is near you.

Attention: Another person must be there to switch off the power, if necessary.
 - Use only one hand when working with powered-on electrical equipment; keep the other hand in your pocket or behind your back.

Attention: An electrical shock can occur only when there is a complete circuit. By observing the above rule, you may prevent a current from passing through your body.
 - When using testers, set the controls correctly and use the approved probe leads and accessories for that tester.
 - Stand on suitable rubber mats (obtained locally, if necessary) to insulate you from grounds such as metal floor strips and machine frames.

Observe the special safety precautions when you work with very high voltages; instructions for these precautions are in the safety sections of maintenance information. Be extremely careful when you measure the high voltages.

- Regularly inspect and maintain your electrical hand tools for safe operational condition.
- Do not use worn or broken tools and testers.
- Never assume that power has been disconnected from a circuit. First, check it to make sure that it has been powered off.

- Always look carefully for possible hazards in your work area. Examples of these hazards are moist floors, nongrounded power extension cables, power surges, and missing safety grounds.
- Do not touch live electrical circuits with the reflective surface of a plastic dental mirror. The surface is conductive; such touching can cause personal injury and machine damage.
- Do not service the following parts with the power on when they are removed from their normal operating places in a machine:
 - Power supply units
 - Pumps
 - Blowers and fans
 - Motor generatorsand similar units. (This practice ensures correct grounding of the units.)
- If an electrical accident occurs:
 - Caution: do not become a victim yourself.
 - Switch off the power.
 - Send the victim to get medical aid.

Safety inspection guide

The purpose of this inspection guide is to assist you in identifying potential unsafe conditions. As each machine was designed and built, required safety items were installed to protect users and service personnel from injury. This guide addresses only those items. You should use good judgment to identify potential safety hazards according to the attachment of non-Lenovo features or options not covered by this inspection guide.

If any unsafe conditions are present, you must determine how serious the apparent hazard could be and whether you can continue without first correcting the problem.

Consider these conditions and the safety hazards they present:

- Electrical hazards, especially primary power (primary voltage on the frame can cause serious or fatal electrical shock)
- Explosive hazards, such as a damaged CRT face or a bulging capacitor
- Mechanical hazards, such as loose or missing hardware

To determine whether there are any potential unsafe conditions, use the following checklist at the beginning of every service task. Begin the checks with the power off, and the power cord disconnected.

Checklist:

1. Check exterior covers for damage (loose, broken, or sharp edges).
2. Turn off the computer. Disconnect the power cord.
3. Check the power cord for:
 - a. A third-wire ground connector in good condition. Use a meter to measure third-wire ground continuity for 0.1 ohm or less between the external ground pin and the frame ground.
 - b. The power cord should be the type specified in the parts list.
 - c. Insulation must not be frayed or worn.
4. Check for cracked or bulging batteries.
5. Remove the cover.
6. Check for any obvious non-Lenovo alterations. Use good judgment as to the safety of any non-Lenovo alterations.
7. Check inside the unit for any obvious unsafe conditions, such as metal filings, contamination, water or other liquids, or signs of fire or smoke damage.
8. Check for worn, frayed, or pinched cables.
9. Check that the power-supply cover fasteners (screws or rivets) have not been removed or tampered with.

Handling devices that are sensitive to electrostatic discharge

Any computer part containing transistors or integrated circuits (ICs) should be considered sensitive to electrostatic discharge (ESD). ESD damage can occur when there is a difference in charge between objects. Protect against ESD damage by equalizing the charge so that the machine, the part, the work mat, and the person handling the part are all at the same charge.

Notes:

1. Use product-specific ESD procedures when they exceed the requirements noted here.
2. Make sure that the ESD protective devices you use have been certified (ISO 9000) as fully effective.

When handling ESD-sensitive parts:

- Keep the parts in protective packages until they are inserted into the product.
- Avoid contact with other people.
- Wear a grounded wrist strap against your skin to eliminate static on your body.
- Prevent the part from touching your clothing. Most clothing is insulative and retains a charge even when you are wearing a wrist strap.
- Use the black side of a grounded work mat to provide a static-free work surface. The mat is especially useful when handling ESD-sensitive devices.
- Select a grounding system, such as those listed below, to provide protection that meets the specific service requirement.

Note:

The use of a grounding system to guard against ESD damage is desirable but not necessary.

- Attach the ESD ground clip to any frame ground, ground braid, or green-wire ground.
- When working on a double-insulated or battery-operated system, use an ESD common ground or reference point. You can use coax or connector-outside shells on these systems.
- Use the round ground prong of the ac plug on ac-operated computers.

Grounding requirements

Electrical grounding of the computer is required for operator safety and correct system function. Proper grounding of the electrical outlet can be verified by a certified electrician.

Safety notices: multilingual translations

The safety notices in this section are provided in English, French, German, Hebrew, Italian, Japanese, and Spanish.

Safety notice 1

Before the computer is powered on after FRU replacement, make sure all screws, springs, and other small parts are in place and are not left loose inside the computer. Verify this by shaking the computer and listening for rattling sounds. Metallic parts or metal flakes can cause electrical shorts.

Avant de remettre l'ordinateur sous tension après remplacement d'une unité en clientèle, vérifiez que tous les ressorts, vis et autres pièces sont bien en place et bien fixées. Pour ce faire, secouez l'unité et assurez-vous qu'aucun bruit suspect ne se produit. Des pièces métalliques ou des copeaux de métal pourraient causer un court-circuit.

Bevor nach einem FRU-Austausch der Computer wieder angeschlossen wird, muß sichergestellt werden, daß keine Schrauben, Federn oder andere Kleinteile fehlen oder im Gehäuse vergessen wurden. Der Computer muß geschüttelt und auf Klappergeräusche geprüft werden. Metallteile oder-splitter können Kurzschlüsse erzeugen.

לפני הפעלת המחשב לאחר החלפת FRU יש לוודא שכל הברגים, הקפיצים, וחלקים קטנים אחרים נמצאים במקומם ואינם חופשיים לזוז בתוך המחשב. כדי לוודא זאת, יש לטלטל את המחשב ולהקשיב לגילוי קולות שקשוק. חלקי או שבבי מתכת עלולים לגרום לקצרים חשמליים.

Prima di accendere l'elaboratore dopo che é stata effettuata la sostituzione di una FRU, accertarsi che tutte le viti, le molle e tutte le altri parti di piccole dimensioni siano nella corretta posizione e non siano sparse all'interno dell'elaboratore. Verificare ciò scuotendo l'elaboratore e prestando attenzione ad eventuali rumori; eventuali parti o pezzetti metallici possono provocare cortocircuiti pericolosi.

FRUの交換後、コンピュータの電源を入れる前に、ねじ、バネ、その他の小さな部品がすべて正しい位置にあり、またコンピュータの内部で緩んでいないことを確認してください。これを確認するには、コンピュータを振って、カチャカチャと音がしないか確かめます。金属部品や金属破片はショートの原因になることがあります。

Antes de encender el sistema despues de sustituir una FRU, compruebe que todos los tornillos, muelles y demás piezas pequeñas se encuentran en su sitio y no se encuentran sueltas dentro del sistema. Compruébelo agitando el sistema y escuchando los posibles ruidos que provocarían. Las piezas metálicas pueden causar cortocircuitos eléctricos.

Safety notice 2

DANGER

Some standby batteries contain a small amount of nickel and cadmium. Do not disassemble a standby battery, recharge it, throw it into fire or water, or short-circuit it. Dispose of the battery as required by local ordinances or regulations. Use only the battery in the appropriate parts listing. Use of an incorrect battery can result in ignition or explosion of the battery.

Certaines batteries de secours contiennent du nickel et du cadmium. Ne les démontez pas, ne les rechargez pas, ne les exposez ni au feu ni à l'eau. Ne les mettez pas en court-circuit. Pour les mettre au rebut, conformez-vous à la réglementation en vigueur. Lorsque vous remplacez la pile de sauvegarde ou celle de l'horloge temps réel, veillez à n'utiliser que les modèles cités dans la liste de pièces détachées adéquate. Une batterie ou une pile inappropriée risque de prendre feu ou d'exploser.

Die Bereitschaftsbatterie, die sich unter dem Diskettenlaufwerk befindet, kann geringe Mengen Nickel und Cadmium enthalten. Sie darf nicht zerlegt, wiederaufgeladen, kurzgeschlossen, oder Feuer oder Wasser ausgesetzt werden. Bei der Entsorgung die örtlichen Bestimmungen für Sondermüll beachten. Beim Ersetzen der Bereitschafts- oder Systembatterie nur Batterien des Typs verwenden, der in der Ersatzteilliste aufgeführt ist. Der Einsatz falscher Batterien kann zu Entzündung oder Explosion führen.

סוללות המצננה מסוימות מכילות כמות קטנה של ניקל וקדמיום. אין לפרק סוללת המצננה, לטעון אותה מחדש, להשליך אותה לנאש או למים או לקצר אותה. יש לשלוק את הסוללה בנדרש על ידי התקנות והחוקים המקומיים. יש להשתמש רק בסוללה המופיעה ברשימת החלקים המתאימה. שימוש בסוללה לא מתאימה עלול לגרום להצתה או התפוצצות של הסוללה.

Alcune batterie di riserva contengono una piccola quantità di nichel e cadmio. Non smontarle, ricaricarle, gettarle nel fuoco o nell'acqua né cortocircuitarle. Smaltirle secondo la normativa in vigore (DPR 915/82, successive disposizioni e disposizioni locali). Quando si sostituisce la batteria dell'RTC (real time clock) o la batteria di supporto, utilizzare soltanto i tipi inseriti nell'appropriato Catalogo parti. L'impiego di una batteria non adatta potrebbe determinare l'incendio o l'esplosione della batteria stessa.

予備バッテリーの中には少量のニッケルとカドミウムが含まれているものがあります。したがって、予備バッテリーの分解、再充電、火または水の中への投棄、またはショートさせることは決して行わないでください。バッテリーを廃棄する場合は地方自治体の条例に従ってください。適切なパーツ・リストにあるバッテリーだけを使用してください。誤ったバッテリーを使用すると、バッテリーが発火したり、爆発したりすることがあります。

Algunas baterías de reserva contienen una pequeña cantidad de níquel y cadmio. No las desmonte, ni recargue, ni las eche al fuego o al agua ni las cortocircuite. Deséchelas tal como dispone la normativa local. Utilice sólo baterías que se encuentren en la lista de piezas. La utilización de una batería no apropiada puede provocar la ignición o explosión de la misma.

Safety notice 3**⚠ DANGER**

The battery pack contains small amounts of nickel. Do not disassemble it, throw it into fire or water, or short-circuit it. Dispose of the battery pack as required by local ordinances or regulations. Use only the battery in the appropriate parts listing when replacing the battery pack. Use of an incorrect battery can result in ignition or explosion of the battery.

La batterie contient du nickel. Ne la démontez pas, ne l'exposez ni au feu ni à l'eau. Ne la mettez pas en court-circuit. Pour la mettre au rebut, conformez-vous à la réglementation en vigueur. Lorsque vous remplacez la batterie, veillez à n'utiliser que les modèles cités dans la liste de pièces détachées adéquate. En effet, une batterie inappropriée risque de prendre feu ou d'exploser.

Akkum enthalten geringe Mengen von Nickel. Sie dürfen nicht zerlegt, wiederaufgeladen, kurzgeschlossen, oder Feuer oder Wasser ausgesetzt werden. Bei der Entsorgung die örtlichen Bestimmungen für Sondermüll beachten. Beim Ersetzen der Batterie nur Batterien des Typs verwenden, der in der Ersatzteilliste aufgeführt ist. Der Einsatz falscher Batterien kann zu Entzündung oder Explosion führen.

מארו הסוללה מכיל כמויות קטנות של ניקל וקדמיום. אין לפרק את מארו הסוללה, להשליך אותו לאש או למים או לקצר אותו. יש לשלוק את מארו הסוללה כנדרש על ידי התקנות והחוקים המקומיים. יש להשתמש רק בסוללה המופיעה ברשימת החלקים המתאימה בזמן החלפת מארו הסוללה. שימוש בסוללה לא מתאימה עלול לגרום לתצתה או התפוצצות של הסוללה.

La batteria contiene piccole quantità di nichel. Non smontarla, gettarla nel fuoco o nell'acqua né cortocircuitarla. Smaltirla secondo la normativa in vigore (DPR 915/82, successive disposizioni e disposizioni locali). Quando si sostituisce la batteria, utilizzare soltanto i tipi inseriti nell'appropriato Catalogo parti. L'impiego di una batteria non adatta potrebbe determinare l'incendio o l'esplosione della batteria stessa.

バッテリー・パックには少量のニッケルが含まれています。バッテリー・パックを分解したり、火または水の中に投げ込んだり、ショートさせないでください。バッテリー・パックの廃棄にあたっては、地方自治体の条例または規則に従ってください。バッテリー・パックを交換するときは、適切なパーツ・リストにあるバッテリーだけを使用してください。誤ったバッテリーを使用すると、バッテリーが発火したり、爆発したりすることがあります。

Las baterías contienen pequeñas cantidades de níquel. No las desmonte, ni recargue, ni las eche al fuego o al agua ni las cortocircuite. Deséchelas tal como dispone la normativa local. Utilice sólo baterías que se encuentren en la lista de piezas al sustituir la batería. La utilización de una batería no apropiada puede provocar la ignición o explosión de la misma.

Safety notice 4

DANGER

The lithium battery can cause a fire, an explosion, or a severe burn. Do not recharge it, remove its polarized connector, disassemble it, heat it above 100°C (212°F), incinerate it, or expose its cell contents to water. Dispose of the battery as required by local ordinances or regulations. Use only the battery in the appropriate parts listing. Use of an incorrect battery can result in ignition or explosion of the battery.

La pile de sauvegarde contient du lithium. Elle présente des risques d'incendie, d'explosion ou de brûlures graves. Ne la rechargez pas, ne retirez pas son connecteur polarisé et ne la démontez pas. Ne l'exposez pas à une température supérieure à 100°C, ne la faites pas brûler et n'en exposez pas le contenu à l'eau. Mettez la pile au rebut conformément à la réglementation en vigueur. Une pile inappropriée risque de prendre feu ou d'exploser.

Die Systematterie ist eine Lithiumatterie. Sie kann sich entzünden, explodieren oder schwere Verbrennungen hervorrufen. Batterien dieses Typs dürfen nicht aufgeladen, zerlegt, über 100 C erhitzt oder verbrannt werden. Auch darf ihr Inhalt nicht mit Wasser in Verbindung gebracht oder der zur richtigen Polung angebrachte Verbindungsstecker entfernt werden. Bei der Entsorgung die örtlichen Bestimmungen für Sondermüll beachten. Beim Ersetzen der Batterie nur Batterien des Typs verwenden, der in der Ersatzteilliste aufgeführt ist. Der Einsatz falscher Batterien kann zu Entzündung oder Explosion führen.

סוללת הליתיום עלולה לגרום לשריפה, להתפוצצות או לכוויות קשות. אין לטעון אותה מחדש, לטלוק את המחבר המקוטב שלה, לפרק אותה או לחמם אותה לטמפרטורה העולה על 100 מעלות צלזיוס. אין לשרוף את הסוללה ואין לחשוף את תוכן התא למים. יש לטלוק את הסוללה כנדרש בתקנות ובחוקים המקומיים. יש להשתמש רק בסוללה המומינה ברשימת החלקים המתאימים. שימוש בסוללה אחרת עלול לגרום לשריפה או התפוצצות.

La batteria di supporto e una batteria al litio e puo incendiarsi, esplodere o procurare gravi ustioni. Evitare di ricaricarla, smontarne il connettore polarizzato, smontarla, riscaldarla ad una temperatura superiore ai 100 gradi centigradi, incendiarla o gettarla in acqua. Smaltirla secondo la normativa in vigore (DPR 915/82, successive disposizioni e disposizioni locali). L'impiego di una batteria non adatta potrebbe determinare l'incendio o l'esplosione della batteria stessa.

リチウム・バッテリーは、火災、爆発、または重症のやけどを引き起こすことがあります。バックアップ・バッテリーの充電、その極性コネクタの取り外し、バッテリー本体の分解、100°C (212°F) 以上への加熱、焼却、電池の中身を水に浸すことはしないでください。バッテリーを廃棄する場合は地方自治体の条例に従ってください。適切なパーツ・リストにあるバッテリーだけを使用してください。誤ったバッテリーを使用すると、バッテリーが発火したり、爆発したりすることがあります。

La batería de repuesto es una batería de litio y puede provocar incendios, explosiones o quemaduras graves. No la recargue, ni quite el conector polarizado, ni la desmonte, ni caliente por encima de los 100°C (212°F), ni la incinere ni exponga el contenido de sus celdas al agua. Deséchela tal como dispone la normativa local.

Safety notice 5

If the LCD breaks and the fluid from inside the LCD gets into your eyes or on your hands, immediately wash the affected areas with water at least for 15 minutes. Seek medical care if any symptoms caused by the fluid are present after washing.

Si le panneau d'affichage à cristaux liquides se brise et que vous recevez dans les yeux ou sur les mains une partie du fluide, rincez-les abondamment pendant au moins quinze minutes. Consultez un médecin si des symptômes persistent après le lavage.

Die Leuchtstoffröhre im LCD-Bildschirm enthält Quecksilber. Bei der Entsorgung die örtlichen Bestimmungen für Sondermüll beachten. Der LCD-Bildschirm besteht aus Glas und kann zerbrechen, wenn er unsachgemäß behandelt wird oder der Computer auf den Boden fällt. Wenn der Bildschirm beschädigt ist und die darin befindliche Flüssigkeit in Kontakt mit Haut und Augen gerät, sollten die betroffenen Stellen mindestens 15 Minuten mit Wasser abgespült und bei Beschwerden anschließend ein Arzt aufgesucht werden.

אם מסך הנביש הנוזלי (LCD) נשבר והנוזל מתוך המסך בא במגע עם עיניים או ידיים, שטפו את האזורים הנוגעים מיד במים במשך 15 דקות לפחות. פנו לקבלת עזרה רפואית אם תסמינים הנובעים מהמגע עם הנוזל נמשכים לאחר השטיפה.

Nel caso che caso l'LCD si dovesse rompere ed il liquido in esso contenuto entrasse in contatto con gli occhi o le mani, lavare immediatamente le parti interessate con acqua corrente per almeno 15 minuti; poi consultare un medico se i sintomi dovessero permanere.

LCD が破損し、LCD 中の液体が目に入ったり、手に触れたりした場合は、液体が触れた部分を少なくとも 15 分間洗い流してください。洗い流した後に、液体によって何らかの症状が現れた場合は、医師の治療を受けてください。

Si la LCD se rompe y el fluido de su interior entra en contacto con sus ojos o sus manos, lave inmediatamente las áreas afectadas con agua durante 15 minutos como mínimo. Obtenga atención médica si se presenta algún síntoma del fluido despues de lavarse.

Safety notice 6

⚠ DANGER

To avoid shock, do not remove the plastic cover that protects the lower part of the inverter card.

Afin d'éviter tout risque de choc électrique, ne retirez pas le cache en plastique protégeant la partie inférieure de la carte d'alimentation.

Aus Sicherheitsgründen die Kunststoffabdeckung, die den unteren Teil der Spannungswandlerplatine umgibt, nicht entfernen.

כדי למנוע התחשמלות, אין להסיר את מכסה הפלסטיק המגן על חלקו התחתון של הכרטיס ההפוך.

Per evitare scosse elettriche, non rimuovere la copertura in plastica che avvolge la parte inferiore della scheda invertitore.

感電を防ぐため、インバーター・カードの下部を保護しているプラスチック・カバーを外さないでください。

Para evitar descargas, no quite la cubierta de plástico que rodea la parte baja de la tarjeta invertida.

Safety notice 7

⚠ DANGER

Though the main batteries have low voltage, a shorted or grounded battery can produce enough current to burn personnel or combustible materials.

Bien que le voltage des batteries principales soit peu élevé, le court-circuit ou la mise à la masse d'une batterie peut produire suffisamment de courant pour brûler des matériaux combustibles ou causer des brûlures corporelles graves.

Obwohl Hauptbatterien eine niedrige Spannung haben, können sie doch bei Kurzschluß oder Erdung genug Strom abgeben, um brennbare Materialien zu entzünden oder Verletzungen bei Personen hervorzurufen.

אף שהסוללות הראשיות הן בעלות מתח נמוך, סוללה מקוצרת או מוארקת עלולה להפיק זרם מספיק לגרימת כוויות או להצתת חומרים דליקים.

Sebbene le batterie di alimentazione siano a basso voltaggio, una batteria in corto circuito o a massa può fornire corrente sufficiente da bruciare materiali combustibili o provocare ustioni ai tecnici di manutenzione.

メイン・バッテリーの電圧は低くても、ショートしたり、接地したバッテリーが、作業者にやけどを負わせたり、可燃物を燃やすだけの電流を発生させる場合があります。

Aunque las baterías principales tienen un voltaje bajo, una batería cortocircuitada o con contacto a tierra puede producir la corriente suficiente como para quemar material combustible o provocar quemaduras en el personal.

Safety notice 8

⚠ DANGER

Before removing any FRU, turn off the computer, unplug all power cords from electrical outlets, remove the battery pack, and then disconnect any interconnecting cables.

Avant de retirer une unité remplaçable en clientèle, mettez le système hors tension, débranchez tous les cordons d'alimentation des socles de prise de courant, retirez la batterie et déconnectez tous les cordons d'interface.

Die Stromzufuhr muß abgeschaltet, alle Stromkabel aus der Steckdose gezogen, der Akku entfernt und alle Verbindungskabel abgenommen sein, bevor eine FRU entfernt wird.

לפני סילוק FRU כלשהו, יש לכבות את המחשב, לנתק את כל כבלי החשמל משקעי החשמל, להוציא את מטריז הסוללה, ואז לנתק כבלי חיבור אחרים אם יש כאלה.

Prima di rimuovere qualsiasi FRU, spegnere il sistema, scollegare dalle prese elettriche tutti i cavi di alimentazione, rimuovere la batteria e poi scollegare i cavi di interconnessione.

FRU を取り外す前に、**ThinkPad** の電源を切って、すべての電源コードをコンセントから外してください。次に、バッテリー・パックを外し、相互接続ケーブルを外してください。

Antes de quitar una FRU, apague el sistema, desenchufe todos los cables de las tomas de corriente eléctrica, quite la batería y, a continuación, desconecte cualquier cable de conexión entre dispositivos.

Laser compliance statement

Some models of Lenovo computer are equipped from the factory with an optical storage device such as a CD-ROM drive or a DVD-ROM drive. Such devices are also sold separately as options. If one of these drives is installed, it is certified in the U.S. to conform to the requirements of the Department of Health and Human Services 21 Code of Federal Regulations (DHHS 21 CFR) Subchapter J for Class 1 laser products. Elsewhere, the drive is certified to conform to the requirements of the International Electrotechnical Commission (IEC) 825 and CENELEC EN 60 825 for Class 1 laser products.

If a CD-ROM drive, a DVD-ROM drive, or another laser device is installed, note the following:

CAUTION

Use of controls or adjustments or performance of procedures other than those specified herein might result in hazardous radiation exposure.

O uso de controles, ajustes ou desempenho de procedimentos diferentes daqueles aqui especificados pode resultar em perigosa exposição à radiação.

凡未在这里指明的任何控制用法、调整、行为，都会导致严重后果。

Pour éviter tout risque d'exposition au rayon laser, respectez les consignes de réglage et d'utilisation des commandes, ainsi que les procédures décrites.

Werden Steuer- und Einstellelemente anders als hier festgesetzt verwendet, kann gefährliche Laserstrahlung auftreten.

Az itt előírt eljárásoktól, beállítástól és vezérlésektől eltérni a lézersugárzás veszélye miatt kockázatos!

L'utilizzo di controlli, regolazioni o l'esecuzione di procedure diverse da quelle specificate possono provocare l'esposizione a.

Использование элементов настройки и выполнение процедур иных, чем указано здесь, может привести к опасному радиационному облучению.

Použitie kontrol, úprav alebo iných vykonaní od iných výrobcov, ako je v tomto špecifikované, mohlo by mať za následok nebezpečenstvo vystavenia sa vyžiarovaniu.

本書で指定された内容以外の、お客様による整備、調整、または手順を行った場合、レーザー光の放射の危険があります。

El uso de controles o ajustes o la ejecución de procedimientos distintos de los aquí especificados puede provocar la exposición a radiaciones peligrosas.

Opening the CD-ROM drive, the DVD-ROM drive, or any other optical storage device could result in exposure to hazardous laser radiation. There are no serviceable parts inside those drives. **Do not open.**

A CD-ROM drive, a DVD-ROM drive, or any other storage device installed may contain an embedded Class 3A or Class 3B laser diode. Note the following:

⚠ DANGER

Emits visible and invisible laser radiation when open. Do not stare into the beam, do not view directly with optical instruments, and avoid direct exposure to the beam.

Radiação por raio laser ao abrir. Não olhe fixo no feixe de luz, não olhe diretamente por meio de instrumentos óticos e evite exposição direta com o feixe de luz.

开启时会有激光发射时，请勿盯视激光光束，请勿直接查看视觉仪器，并且避免直接接触在激光光束之中。

Rayonnement laser si carter ouvert. Évitez de fixer le faisceau, de le regarder directement avec des instruments optiques, ou de vous exposer au rayon.

Laserstrahlung bei geöffnetem Gerät. Nicht direkt oder über optische Instrumente in den Laserstrahl sehen und den Strahlungsbereich meiden.

Kinyitáskor lézersugár ! Ne nézzen bele se szabad szemmel, se optikai eszközökkel. Kerülje a sugárnyalábbal való érintkezést!

Aprendo l'unità vengono emesse radiazioni laser. Non fissare il fascio, non guardarlo direttamente con strumenti ottici e evitare l'esposizione diretta al fascio.

Открывая, берегитесь лазерного излучения. Не смотрите на луч, не разглядывайте его с помощью оптических инструментов, а также избегайте прямого воздействия лазерного луча.

Keď je laserová jednotka otvorená. Vyhňte sa priamemu pohľadu a neľadte priamo s optickými nástrojmi do lúča a vyhňte sa priamemu vystaveniu lúčov.

開けるとレーザー光が放射されます。光線を見つめたり、光学機械を使って直接見たりしないでください。

Radiación láser al abrir. No mire fijamente ni examine con instrumental óptico el haz de luz. Evite la exposición directa al haz.

Important service information

This chapter presents the following important service information:

- “Strategy for replacing FRUs” on page 16
 - “Strategy for replacing a hard disk drive” on page 17
 - “Important notice for replacing a system board” on page 17
- “Important information about replacing RoHS compliant FRUs” on page 18

Important:

BIOS and device driver fixes are customer-installable. The BIOS and device drivers are posted on the customer support site:

<http://support.lenovo.com>.

Strategy for replacing FRUs

Before replacing parts:

Make sure that all software fixes, drivers, and BIOS downloads are installed before replacing any FRUs listed in this manual.

After a system board is replaced, ensure that the latest BIOS is loaded to the system board before completing the service action.

To download software fixes, drivers, and BIOS, follow the steps below:

1. Go to <http://support.lenovo.com>.
2. Enter the serial number or select a product or use Lenovo smart downloading.
3. Select the BIOS/Driver/Applications and download.
4. Follow the directions on the screen and install the necessary software.

Use the following strategy to prevent unnecessary expense for replacing and servicing FRUs:

- If you are instructed to replace an FRU, but the replacement does not solve the problem, reinstall the original FRU before you continue.
- Some computers have both a processor board and a system board. If you are instructed to replace either of them, and replacing one of them does not solve the problem, reinstall that board, and then replace the other one.
- If an adapter or a device consists of more than one FRU, any of the FRUs may be the cause of the error. Before replacing the adapter or device, remove the FRUs one by one to see if the symptoms change. Replace only the FRU that changed the symptoms.

Attention: The setup configuration on the computer you are servicing may have been customized. Running Automatic Configuration may alter the settings. Note the current configuration settings (using the View Configuration option); then, when service has been completed, verify that those settings remain in effect.

Strategy for replacing a hard disk drive

Always try to run a low-level format before replacing a hard disk drive. This will cause all customer data on the hard disk to be lost. Make sure that the customer has a current backup of the data before performing this action.

Attention: The drive startup sequence in the computer you are servicing may have been changed. Be extremely careful during write operations such as copying, saving, or formatting. If you select an incorrect drive, data or programs can be overwritten.

Important notice for replacing a system board

Some components mounted on a system board are very sensitive. Improper handling can cause damage to those components, and may cause a system malfunction.

Attention: When handling a system board:

- Do not drop the system board or apply any excessive force to it.
- Avoid rough handling of any kind.
- Avoid bending the system board and hard pushing to prevent cracking at each BGA (Ball Grid Array) chipset.

Important information about replacing RoHS compliant FRUs

RoHS, The Restriction of Hazardous Substances in Electrical and Electronic Equipment Directive (2002/95/EC) is a European Union legal requirement affecting the global electronics industry. RoHS requirements must be implemented on Lenovo products placed on the market after June 2006. Products on the market before June 2006 are not required to have RoHS compliant parts. If the original FRU parts are non-compliant, replacement parts can also be non-compliant. In all cases if the original FRU parts are RoHS compliant, the replacement part must also be RoHS compliant.

Note: RoHS and non-RoHS FRU part numbers with the same fit and function are identified with unique FRU part numbers.

Lenovo plans to transit to RoHS compliance well before the implementation date and expects its suppliers to be ready to support Lenovo’s requirements and schedule in the EU. Products sold in 2005 and 2006 will contain some RoHS compliant FRUs. The following statement pertains to these products and any product Lenovo produces containing RoHS compliant FRUs.

RoHS compliant FRUs have unique FRU part numbers. Before or after the RoHS implementation date, failed RoHS compliant parts must always be replaced with RoHS compliant ones, so only the FRUs identified as compliant in the system HMM or direct substitutions for those FRUs may be used.

Products marketed before June 2006		Products marketed after June 2006	
Current or original part	Replacement FRU	Current or original part	Replacement FRU
Non-RoHS	Can be Non-RoHS	Must be RoHS	Must be RoHS
Non-RoHS	Can be RoHS		
Non-RoHS	Can sub to RoHS		
RoHS	Must be RoHS		

Note: A direct substitution is a part with a different FRU part number that is automatically shipped by the distribution center at the time of the order.

General checkout

This chapter presents the following information:

- “What to do first” on page 20
- “Power system checkout” on page 21

Before you go to the checkout, make sure to read the following important notes:

Important notes:

- **Only certified trained personnel can service the computer.**
- **Before replacing any FRU, read the entire page on removing and replacing FRUs.**
- **Carefully remove screws for reuse when replacing FRUs.**
- **Be extremely careful during such write operations as copying, saving, or formatting.** Drives in the computer that you are servicing sequence might have been altered. If you select an incorrect drive, data or programs might be overwritten.
- **Replace an FRU only with another FRU of the correct model.** When you replace an FRU, make sure that the machine model and the FRU part number are correct by referring to the FRU parts list.
- **An FRU should not be replaced just because of a single, unreproducible failure.** Single failures can occur for a variety of reasons that have nothing to do with a hardware defect, such as cosmic radiation, electrostatic discharge, or software errors. Consider replacing an FRU only when a problem recurs. If you suspect that an FRU is defective, clear the error logs and run the test again. If the error does not recur, do not replace the FRU.
- **Be careful not to replace a nondefective FRU.**

What to do first

When you do return an FRU, you must include the following information in the parts exchange form or parts return form that you attach to it:

1. Name and phone number of servicer
2. Date of service
3. Date on which the machine failed
4. Date of purchase
5. Procedure index and page number in which the failing FRU was detected
6. Failing FRU name and part number
7. Machine type, model number, and serial number
8. Customer's name and address

Note for warranty: During the warranty period, the customer may be responsible for repair costs if the computer damage was caused by misuse, accident, modification, unsuitable physical or operating environment, or improper maintenance by the customer.

The following is a list of some common items that are not covered under warranty and some symptoms that might indicate that the system was subjected to stress beyond normal use.

Before checking problems with the computer, determine whether the damage is covered under the warranty by referring to the following list:

The following are not covered under warranty:

- LCD panel cracked from the application of excessive force or from being dropped
- Scratched (cosmetic) parts
- Distortion, deformation, or discoloration of the cosmetic parts
- Plastic parts, latches, pins, or connectors that have been cracked or broken by excessive force
- Damage caused by liquid spilled into the system
- Damage caused by the improper insertion of a PC Card or the installation of an incompatible card
- Improper disk insertion or use of an optical drive
- Diskette drive damage caused by pressure on the diskette drive cover, foreign material in the drive, or the insertion of a diskette with multiple labels
- Damaged or bent diskette eject button
- Fuses blown by attachment of a nonsupported device
- Forgotten computer password (making the computer unusable)
- Sticky keys caused by spilling a liquid onto the keyboard
- Use of an incorrect AC adapter on laptop products

The following symptoms might indicate damage caused by nonwarranted activities:

- Missing parts might be a symptom of unauthorized service or modification.
- If the spindle of a hard disk drive becomes noisy, it may have been subjected to excessive force, or dropped.

Power system checkout

To verify a symptom, follow the steps below:

1. Turn off the computer.
2. Connect the AC adapter.
3. Make sure that power is supplied when you turn on the computer.
4. Turn off the computer.
5. Disconnect the AC adapter.
6. Make sure that the battery pack supplies power when you turn on the computer.

If you suspect a power problem, see the appropriate power supply checkout:

- “Checking the AC adapter” on page 21
- “Checking operational charging” on page 22

Checking the AC adapter

You are here because the computer fails only when the AC adapter is used.

- If the power-on indicator does not turn on, check the power cord of the AC adapter for correct continuity and installation.
- If the computer does not charge during operation, go to “Checking operational charging”.

To check the AC adapter, follow the steps below:

1. Unplug the AC adapter cable from the computer.
2. Measure the output voltage at the plug of the AC adapter cable. See the following figure:



Pin	Voltage (V DC)
1	+20
2	0

Note: Output voltage for the AC adapter pin No. 2 may differ from the one you are servicing.

3. If the voltage is not correct, replace the AC adapter.
4. If the voltage is acceptable, do the following:
 - Replace the system board.
 - If the problem persists, go to “Lenovo ideapad 2in1 14” on page 26.

Note: Noise from the AC adapter does not always indicate a defect.

Checking operational charging

To check whether the battery charges properly during operation, use a discharged battery pack or a battery pack that has less than 50% of the total power remaining when installed in the computer.

Perform operational charging. If the battery status indicator or icon is not lit, remove the battery pack and let it return to room temperature. Reinstall the battery pack. If the charge indicator or icon is still off, replace the battery pack.

If the charge indicator is still not lit, replace the system board.

Checking the battery pack

Battery charging does not start until the Power Meter shows that less than 95% of the total power remains; under this condition the battery pack can charge to 100% of its capacity. This protects the battery pack from being overcharged or from having a shortened life.

To check your battery, move your cursor to the Power Meter icon in the icon tray of the Windows® taskbar and wait for a moment (but do not click it), and the

percentage of battery power remaining is displayed. To get detailed information about the battery, double-click the Power Meter icon.

Note: If the battery pack becomes hot, it may not be able to be charged. Remove it from the computer and leave it at room temperature for a while. After it cools down, reinstall and recharge it.

Related service information

This chapter presents the following information:

- “Restoring the factory contents by using Recovery System” on page 23
- “Passwords” on page 24
- “Power management” on page 25

Restoring the factory contents by using Recovery System

Restore of factory default

The Lenovo ideapad 2in1 14 computer comes with pre-installed Recovery System. In order to save application files and the initial backed up files of the system, the hard disk in a Lenovo computer includes a hidden partition when it is shipped. If you need to restore the system to the point of your first boot up, just enter the Recovery System. For details of the Recovery system, see *the User Guide for Recovery system*.

Note: This will delete all the new data on the system partition (C drive), which is not recoverable. Make sure to back up your critical data before you perform this action.

Passwords

As many as three passwords may be needed for any Lenovo computer: the power-on password (POP), the hard disk password (HDP), and the supervisor password.

If any of these passwords has been set, a prompt for it appears on the screen whenever the computer is turned on. The computer does not start until the password is entered.

Power-on password

A power-on password (POP) protects the system from being powered on by an unauthorized person. The password must be entered before an operating system can be booted.

Hard-disk password

There are two hard-disk passwords (HDPs):

- + User HDP - for the user

- + Master HDP - for the system administrator, who can use it to get access to the hard disk drive even if the user has changed the user HDP

Attention: If the user HDP has been forgotten, check whether a master HDP has been set. If it has, it can be used for access to the hard disk drive. If no master HDP is available, neither Lenovo nor Lenovo authorized service technicians provide any services to reset either the user or the master HDP, or to recover data from the hard disk drive. The hard disk drive can be replaced for a scheduled fee.

Supervisor password

A supervisor password protects the system information stored in the BIOS. The user must enter the supervisor password to get access to the BIOS and change the system configuration.

Attention: If you forget the password, there is no service procedure to reset the password. The system board must be replaced for a scheduled fee.

Power management

Note: Power management modes are not supported for an APM operating system.


Putting the computer to sleep or shutting it down

When you have finished working with your computer, you can put it to sleep or shut it down.

Putting your computer to sleep

If you will be away from your computer for only a short time, put the computer to sleep. When the computer is in sleep mode, you can quickly wake it to resume use, bypassing the startup process.

To put the computer to sleep, do one of the following:

- Close the display lid.
- Press the Power button.
- Open the start menu, and then select **Power**  → **Sleep**.

Attention: Wait until the power indicator light starts blinking (indicating that the computer is in sleep mode) before you move your computer. Moving your computer while the hard disk is spinning can damage the hard disk, causing loss of data.

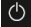
To wake the computer, do one of the following:

- Press any key on the keyboard. (Notebook mode only)
- Press the Power button.

Shutting down the computer

If you are not going to use your computer for a long time, shut it down.

To shut down your computer, do one of the following:

- Open the start menu, and then select **Power**  → **Shut down**.
- Press and hold or right-click the **Start** button in the lower-left corner and select **Shut down or sign out** → **Shut down**.

Lenovo ideapad 2in1 14

This chapter presents the following product-specific service references and product-specific parts information:

- “Specifications” on page 26
- “Status indicators” on page 27
- “Keyboard function keys” on page 28
- “FRU replacement notices” on page 29
- “Removing and replacing an FRU” on page 30
- “Locations” on page 62
- “Parts list” on page 65

Specifications

The following table lists the specifications of the Lenovo ideapad 2in1 14:

Table 1. Specifications

Feature	Description
Processor	View the system properties of your computer. You can do this as follows: Open the Control Panel , and then select System and Security → System .
Graphic Chipset	<ul style="list-style-type: none"> • Integrated Graphics • 15 W GT1/GT2 • 28 W GT3
Display	<ul style="list-style-type: none"> • 14.0-inch, 16:9, 1,366 × 768 pixels HD
Standard memory	<ul style="list-style-type: none"> • DDR4, SODIMM × 1 (max 16 GB)
I/O port	USB 3.0 × 2 Combo audio jack × 1 HDMI port × 1 Type-C × 1 (USB 3.0) Memory card slot (SD/SDHC/SDXC/MMC)
Audio	<ul style="list-style-type: none"> • 1/8" Combo audio jack • JBL Branded Speaker • Built-in microphone × 2
Bluetooth wireless	<ul style="list-style-type: none"> • Built-in antenna with wireless card module for all Models
Keyboard	<ul style="list-style-type: none"> • 6 Row, Lenovo Keyboard, Back-light
Touch pad	<ul style="list-style-type: none"> • Multi-touch type
Integrated camera	<ul style="list-style-type: none"> • 720P HD
Battery	<ul style="list-style-type: none"> • 2 cells, 35 Wh
AC adapter	<ul style="list-style-type: none"> • 20 V DC, 45 W / 65 W
Pre-installed operating system	<ul style="list-style-type: none"> • Win10

Status indicators

The system status indicators below show the computer status:



Table 2. Status indicators

Indicator	Indicator status	Charge status	Meaning
Battery status indicator 1	On (solid white)	Charging	The battery has more than 80% charge.
	On (solid amber)	Discharging	The battery has between 5% and 20% charge.
	Blinking slowly (white)	Charging	The battery has between 20% and 80% charge. When the battery reaches 80% charge, the light will stop blinking. However, charging will continue until the battery is fully charged.
	Blinking slowly (amber)	Charging	The battery has less than 20% charge. When the battery charge reaches 20%, the blinking color will change to white.
	Blinking quickly (amber)	Discharging	The battery has less than 5% charge.
	Off	Discharging	The battery has more than 20% charge.
Power status indicator 2	On (solid white)		The computer is powered on.
	Blinking		The computer is in sleep mode.
	Off		The computer is powered off.











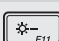

Keyboard function keys

You can access certain system settings quickly by pressing the appropriate function keys.

Table 3. Fn key combinations

Fn + B:	Activates the break function.
Fn + P:	Activates the pause function.
Fn + C:	Enables/disables the scroll lock.
Fn + S:	Activates the system request.
Fn + \uparrow:	Activates the Pgup key function.
Fn + \downarrow:	Activates the Pgdn key function.
Fn + \leftarrow:	Activates the home key function.
Fn + \rightarrow:	Activates the end key function.
Fn + Space (on select models):	Adjusts the keyboard backlight (off \rightarrow dim \rightarrow bright \rightarrow off).

Table 4. Hotkeys

 :	Mutes/unmutes the sound.
 :	Decreases the volume level.
 :	Increases the volume level.
 :	Enables/disables the microphone.
 :	Refreshes the desktop or the currently active window.
 :	Enables/disables the touchpad.
 :	Enables/disables Airplane mode.
 :	Enables/disables the integrated camera.
 :	Locks the screen.
 :	Toggles the display between the computer and an external device.
 :	Decreases display brightness.
 :	Increases display brightness.

Note: You can use the Lenovo Setting to enable/disable the hotkey function.

FRU replacement notices

This section presents notices related to removing and replacing parts. Read this section carefully before replacing any FRU.

Screw notices

Loose screws can cause a reliability problem. In the Lenovo computer, this problem is addressed with special nylon-coated screws that have the following characteristics:

- They maintain tight connections.
- They do not easily come loose, even with shock or vibration.
- They are harder to tighten.

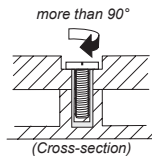
Do the following when you service this machine:

- Keep the screw kit in your tool bag.
- Carefully remove screws for reuse when replacing FRUs.
- Use a torque screwdriver if you have one.

Tighten screws as follows:

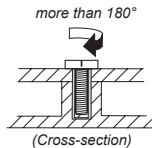
- **Plastic to plastic**

Turn an additional 90° after the screw head touches the surface of the plastic part:



- **Logic card to plastic**

Turn an additional 180° after the screw head touches the surface of the logic card:



- **Torque driver**

If you have a torque screwdriver, refer to the “Torque” column for each step.

- Make sure that you use the correct screws. If you have a torque screwdriver, tighten all screws firmly to the torque shown in the table. **Carefully remove screws for reuse when replacing FRUs. Make sure that all screws are tightened firmly.**
- Ensure torque screwdrivers are calibrated correctly following country specifications.

Removing and replacing an FRU

This section presents exploded figures with the instructions to indicate how to remove and replace the FRU. Make sure to observe the following general rules:

1. Do not attempt to service any computer unless you have been trained and certified. An untrained person runs the risk of damaging parts.
2. Before replacing any FRU, review "FRU replacement notices" on page 29.
3. Begin by removing any FRUs that have to be removed before the failing FRU. Any of such FRUs are listed at the top of the page. Remove them in the order in which they are listed.
4. Follow the correct sequence in the steps to remove the FRU, as given in the figures by the numbers in square callouts.
5. When turning a screw to replace an FRU, turn it in the direction as given by the arrow in the figure.
6. When removing the FRU, move it in the direction as given by the arrow in the figure.
7. To put the new FRU in place, reverse the removal procedures and follow any of the notes that pertain to replacement. For information about connecting and arranging internal cables, see "Locations" on page 62.
8. When replacing an FRU, use the correct screw as shown in the procedures.

DANGER

Before removing any FRU, turn off the computer, unplug all power cords from electrical outlets, remove the battery pack, and then disconnect any of the interconnecting cables.

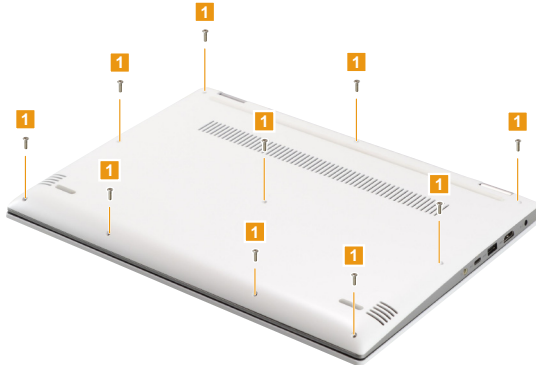
Attention: After replacing an FRU, do not turn on the computer until you have made sure that all screws, springs, and other small parts are in place and none are loose inside the computer. Verify this by shaking the computer gently and listening for rattling sounds. Metallic parts or metal flakes can cause electrical short circuits.

Attention: The system board is sensitive to, and can be damaged by, electrostatic discharge. Before touching it, establish personal grounding by touching a ground point with one hand or using an electrostatic discharge (ESD) strap (P/N 6405959) to remove potential shock reasons.

1010 Base cover

Figure 1. Removal steps of base cover

Remove the screws **1**.



Step	Screw (quantity)	Color	Torque
1	M2.0 x 6.0 mm, Phillips-head, nylok-coated (10) LOW TO UPPER	Black/ Silver	1.0-1.5 kgf*cm

Remove the base cover **2**.



Note: Applying labels to the base cover

If you see the following labels on base cover, it needs to be peeled off from the old base cover, and put on the new base cover.

- a** OS label
- b** Indonesia label
- c** WLAN label
- d** BT label
- e** China Office label

For some models, you also need to apply one or two FCC labels. Check the old base cover; if it has one or two FCC labels, find duplicates of them in the label kit and apply them to the new base cover.

For the location of each label, refer to the following figure:

1020 Battery pack

For access, remove this FRU:

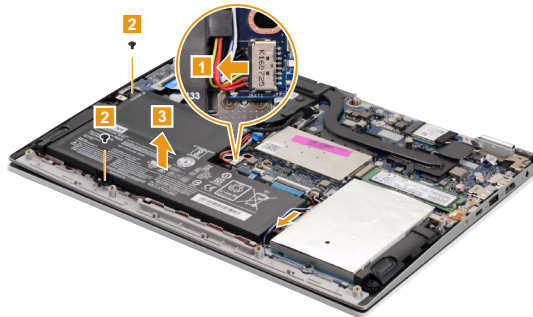
- “1010 Base cover” on page 31

⚠ DANGER

Only use the battery specified in the parts list for your computer. Any other battery could ignite or explode.

Figure 2. Removal steps of battery pack

Unplug the battery pack connector in the direction shown by arrow **1**. Remove the screws **2**. Release the cable from the cable guides, then remove the battery pack in the direction shown by arrow **3**.



Step	Screw (quantity)	Color	Torque
2	M1.98 x 3.0 mm, Phillips-head, nylok-coated (2) BATT TO UPPER	Black	1.0-1.5 kgf*cm

When installing: Make sure that the battery connector is attached firmly.

1030 Solid state disk

For access, remove these FRUs in order:

- “1010 Base cover” on page 31
- “1020 Battery pack” on page 33

Figure 3. Removal steps of solid state disk

Remove the screw **1**.



Step	Screw (quantity)	Color	Torque
1	M1.98 x 3.0 mm, Phillips-head, nylok-coated (1) SSD TO MB	Black	1.0-1.5 kgf*cm

Remove the solid state disk in the direction shown by arrow **2**.



1040 Hard disk drive

For access, remove these FRUs in order:

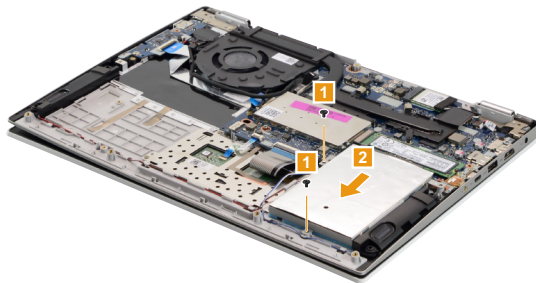
- “1010 Base cover” on page 31
- “1020 Battery pack” on page 33

Attention:

- **Do not drop the hard disk drive or apply any physical shock to it.** The hard disk drive is sensitive to physical shock. Improper handling can cause damage and permanent loss of data.
- Before removing the drive, suggest the customer to backup all the information on it if possible.
- Never remove the drive while the system is operating or is in suspend mode.

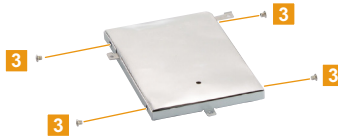
Figure 4. Removal steps of hard disk drive

Remove the screws **1**, then remove the hard disk drive in the direction shown by arrow **2**.



Step	Screw (quantity)	Color	Torque
1	M1.98 × 3.0 mm, Phillips head, nylok-coated (2) HDD BRK TO UPPER	Black	1.85+/-0.15 kgf*cm

Remove the screws **3**, and then take out the metal frame.



Step	Screw (quantity)	Color	Torque
3	M3 × 3 mm, Phillips head, nylok-coated (4) HDD BRK TO HDD	Silver	3.0+/-0.3 kgf*cm

1050 PCI Express Mini Card for wireless LAN

For access, remove these FRUs in order:

- “1010 Base cover” on page 31
- “1020 Battery pack” on page 33

Important: The preinstalled WLAN module may only be replaced with a Lenovo approved module in order to comply with FCC and IC regulations. Refer to “Table 5. Parts list—Overall” on page 67 for Lenovo part numbers for the approved modules.

Figure 5. Removal steps of PCI Express Mini Card for wireless LAN

Peel off the sponge on the card **1**.



Figure 5. Removal steps of PCI Express Mini Card for wireless LAN (continued)

Disconnect the two wireless LAN cables (black, white) **2**, and then remove the screw **3**.



In step **2**, unplug the jacks by using the removal tool antenna RF connector (P/N: 08K7159), or pick up the connectors with your fingers and gently unplug them in the direction shown by the arrows.

Notes: The wireless LAN card has 2 cables in step **2**.

The wireless LAN card in some models might have 3 cables in step **2**.

Step	Screw (quantity)	Color	Torque
3	M1.98 × 3.0 mm, Phillips-head, nylok-coated (1) WLAN TO MB	Black	1.0-1.5 kgf*cm

Remove the card in the direction shown by arrow **4**.



When installing: When installing the wireless LAN card, plug the black cable into the jack labeled **MAIN** and the white cable into the jack labeled **AUX**.

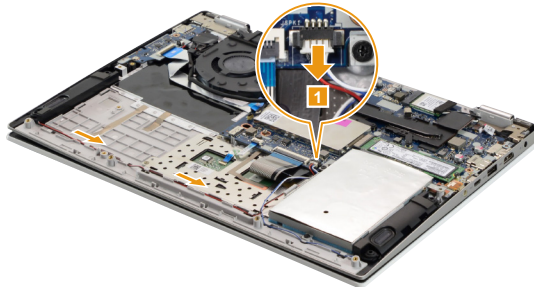
1060 Speakers

For access, remove these FRUs in order:

- “1010 Base cover” on page 31
- “1020 Battery pack” on page 33

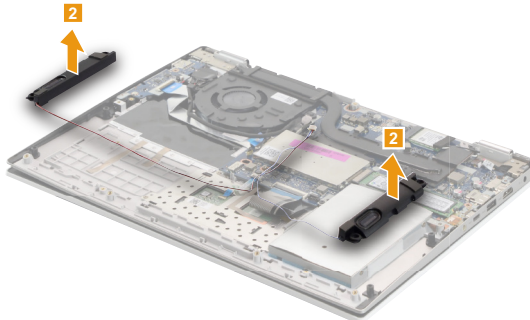
Figure 6. Removal steps of speakers

Unplug the speaker connector in the direction shown by arrow **1**. Release the speaker cable from the cable guides and peel off the tape that secures the cable.



When installing: Make sure that the connector is attached firmly.

Remove the two speakers **2**.



1070 DIMM

For access, remove these FRUs in order:

- “1010 Base cover” on page 31
- “1020 Battery pack” on page 33

Figure 7. Removal steps of DIMM

Carefully remove the DIMM EMI shielding **1**.

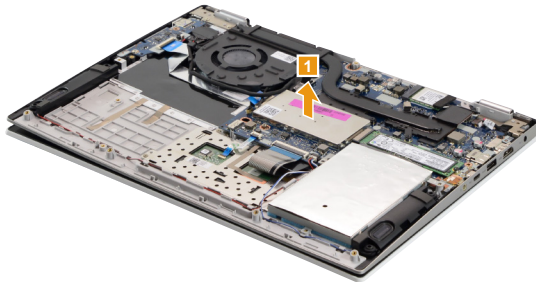
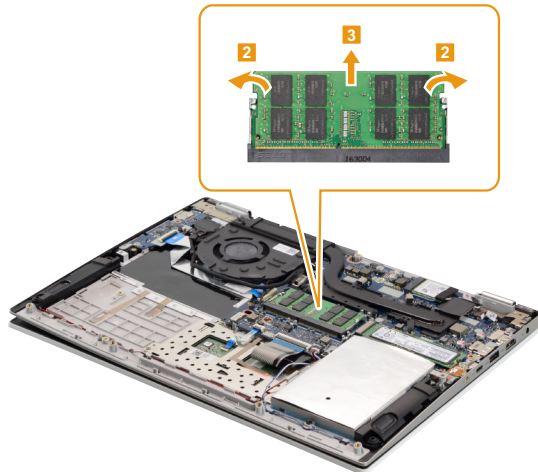


Figure 7. Removal steps of DIMM (continued)

Release the two latches on both edges of the socket at the same time in the directions shown by arrows **2**, and then unplug the DIMM in the direction shown by arrow **3**.



When installing: Insert the notched end of the DIMM into the socket. Push the DIMM firmly, and pivot it until it snaps into place. Make sure that it is firmly fixed in the slot and is difficult to move.

Note: When replacing the memory is completed, you need to restart the computer after the first reboot.

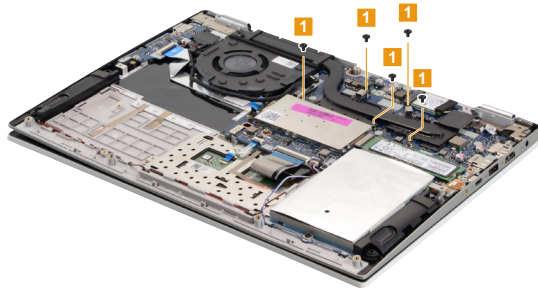
1080 Fan and Heat Sink assembly

For access, remove these FRUs in order:

- “1010 Base cover” on page 31
- “1020 Battery pack” on page 33

Figure 8. Removal steps of fan and heat sink assembly

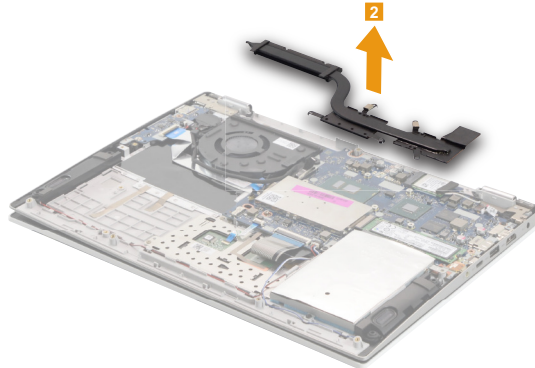
Remove the screws **1**.



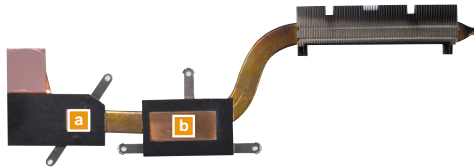
Step	Screw (quantity)	Color	Torque
1	M1.98 x 3.0 mm, Phillips-head, nylok-coated (5) THERMAL MODULE TO CPU BRK/THERMAL MODULE TO GPU BRK (for DIS only)	Black	1.0-1.5 kgf*cm

Figure 8. Removal steps of fan and heat sink assembly (continued)

Remove the heat sink module in the direction shown by arrow **2**.



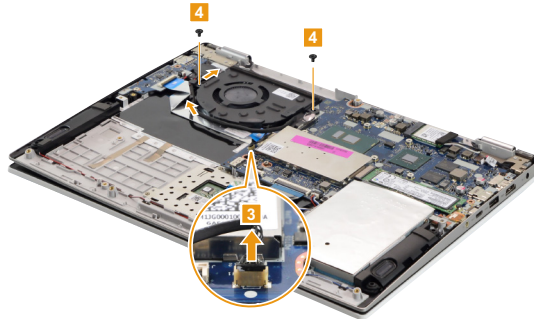
Attention: Do not handle the heat sink assembly roughly. Improper handling can cause distortion or deformation and imperfect contact with components.



When installing: Before you attach the fan assembly to the computer, apply thermal grease, at an amount of 0.2 grams, to parts **a** **b** shown in the figure above. Either too much or too little grease application can cause a thermal problem due to imperfect contact with a component.

Figure 8. Removal steps of fan and heat sink assembly (continued)

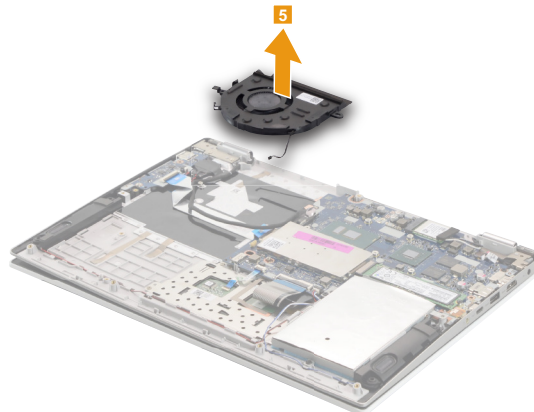
Unplug the fan connector in the direction shown by arrow **3**. Remove the screws **4**. Release the LCD cable from the cable guides.



Step	Screw (quantity)	Color	Torque
4	M1.98 × 3.0 mm, Phillips head, nylok-coated (2) FAN TO upper	Black	1.0-1.5 kgf*cm

When installing: Make sure that the connector is attached firmly.

Remove the fan **5**.



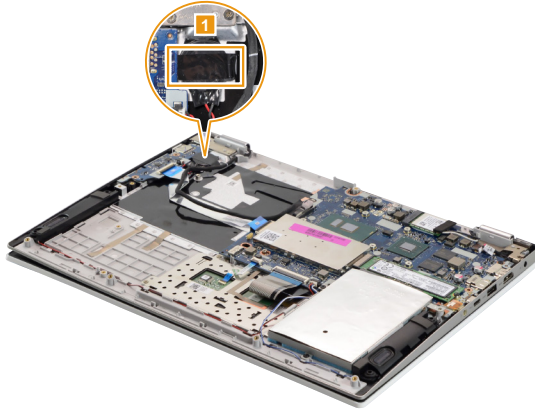
1090 IO board

For access, remove these FRUs in order:

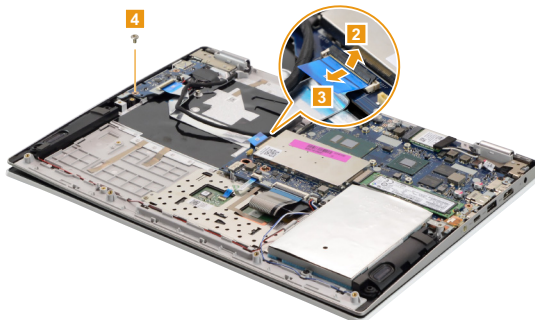
- “1010 Base cover” on page 31
- “1020 Battery pack” on page 33
- “1080 Fan and Heat Sink assembly” on page 41

Figure 9. Removal steps of IO board

Peel off the adhesive tape that secures the RTC battery **1**.



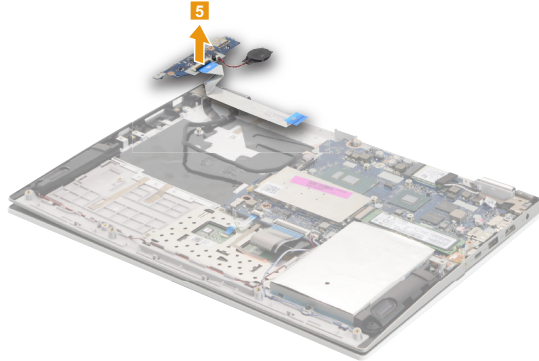
Disconnect the IO board connector in the directions shown by arrows **2** and **3**.
Remove the screw **4**.



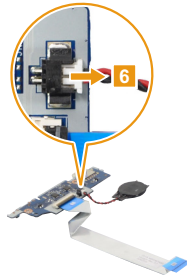
Step	Screw (quantity)	Color	Torque
4	M2.0 x 3.5 mm, Phillips-head, nylok-coated (1) IO BOARD TO UPPER	Silver	1.0-1.5 kgf*cm

Figure 9. Removal steps of IO board (continued)

Remove the IO board **5**.



Unplug the RTC battery connector in the direction shown by arrow **6**, then remove the RTC battery.



1100 System board

Important notices for handling the system board:

When handling the system board, bear the following in mind.

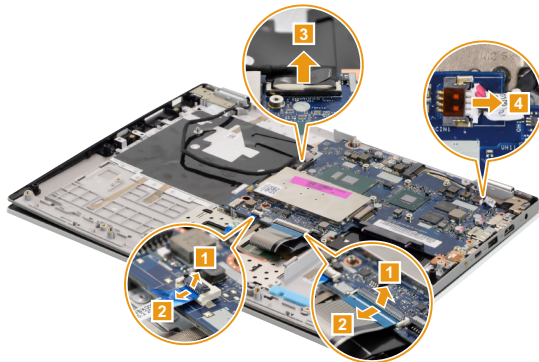
- Be careful not to drop the system board on a bench top that has a hard surface, such as metal, wood, or composite.
- Avoid rough handling of any kind.
- During the whole process, make sure not to drop or stack the system board.
- If you put a system board down, make sure to put it only on a padded surface, such as an ESD mat or conductive corrugated material.

For access, remove these FRUs in order:

- “1010 Base cover” on page 31
- “1020 Battery pack” on page 33
- “1030 Solid state disk” on page 34
- “1040 Hard disk drive” on page 35
- “1050 PCI Express Mini Card for wireless LAN” on page 36
- “1060 Speakers” on page 38
- “1080 Fan and Heat Sink assembly” on page 41
- “1090 IO board” on page 44

Figure 10. Removal steps of system board (continued)

Detach the connectors in the directions shown by arrows **1**, **2**, **3** and **4**.



When installing: Make sure that the connectors are attached firmly.

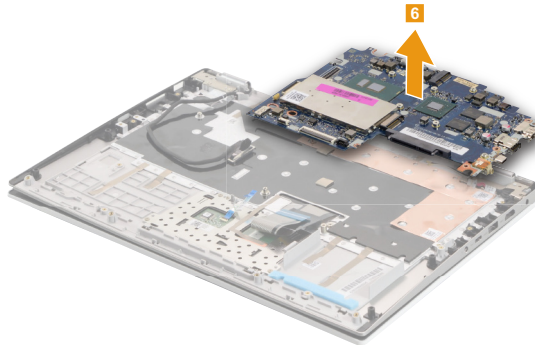
Figure 10. Removal steps of system board (continued)

Remove the screws **5**.



Step	Screw (quantity)	Color	Torque
5	M1.98 x 3.0 mm, Phillips-head, nylok-coated (3) MB TO UPPER	Black	1.0-1.5 kgf*cm

Remove the system board **6**.



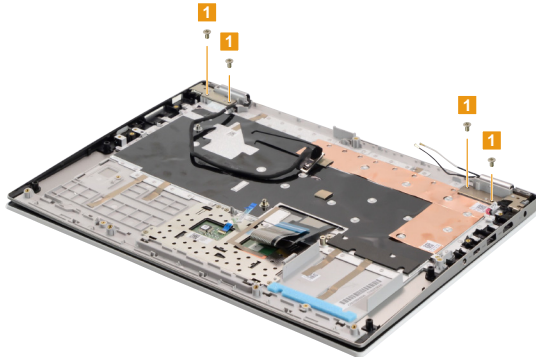
1110 Upper case

For access, remove these FRUs in order:

- “1010 Base cover” on page 31
- “1020 Battery pack” on page 33
- “1030 Solid state disk” on page 34
- “1040 Hard disk drive” on page 35
- “1050 PCI Express Mini Card for wireless LAN” on page 36
- “1060 Speakers” on page 38
- “1080 Fan and Heat Sink assembly” on page 41
- “1090 IO board” on page 44
- “1100 System board” on page 46

Figure 11. Removal steps of upper case

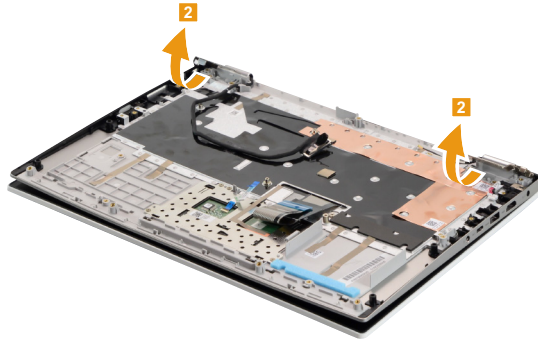
Remove the screws **1**.



Step	Screw (quantity)	Color	Torque
1	M2.5 × 4.0 mm, Phillips-head, nylok-coated (4) HINGE BRK TO UPPER	Silver	1.5-2.0 kgf*cm

Figure 11. Removal steps of upper case (continued)

Open the hinges **2**.



Rotate the upper case in the direction shown by arrows **3**. Then remove the upper case.



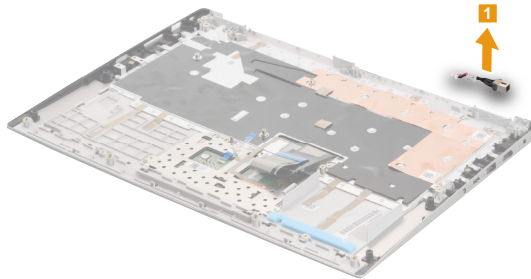
1120 DC-in cable

For access, remove these FRUs in order:

- “1010 Base cover” on page 31
- “1020 Battery pack” on page 33
- “1030 Solid state disk” on page 34
- “1040 Hard disk drive” on page 35
- “1050 PCI Express Mini Card for wireless LAN” on page 36
- “1060 Speakers” on page 38
- “1080 Fan and Heat Sink assembly” on page 41
- “1090 IO board” on page 44
- “1100 System board” on page 46
- “1110 Upper case” on page 48

Figure 12. Removal steps of DC-in cable

Remove the DC-in cable in the direction shown by arrow **1**.



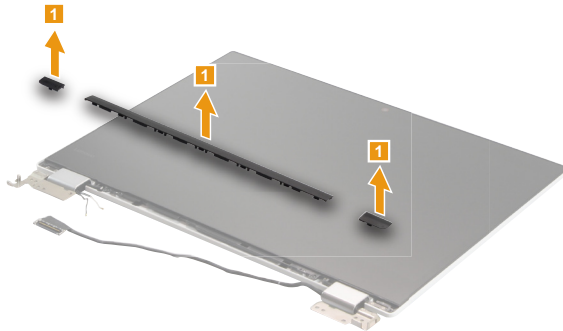
1130 LCD unit

For access, remove these FRUs in order:

- “1010 Base cover” on page 31
- “1020 Battery pack” on page 33
- “1030 Solid state disk” on page 34
- “1050 PCI Express Mini Card for wireless LAN” on page 36
- “1060 Speakers” on page 38
- “1080 Fan and Heat Sink assembly” on page 41
- “1100 System board” on page 46
- “1110 Upper case” on page 48

Figure 13. Removal steps of LCD unit

Remove the hinge cover with tweezers **1**.



Remove the hinge rubbers **2**.

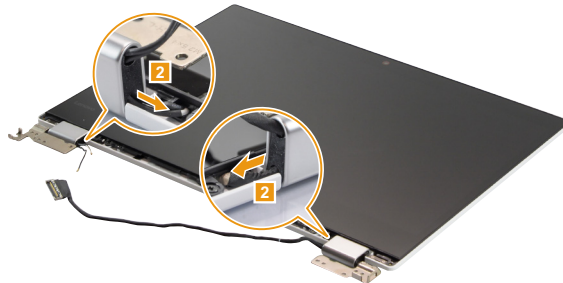
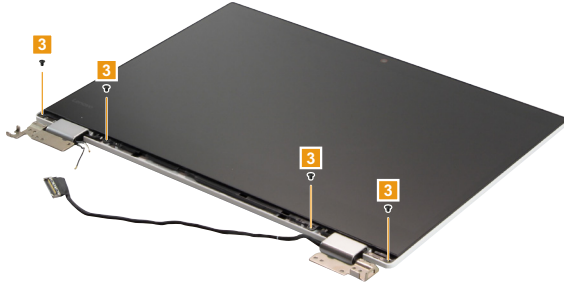


Figure 13. Removal steps of LCD unit (continued)

Remove the screws **3**.



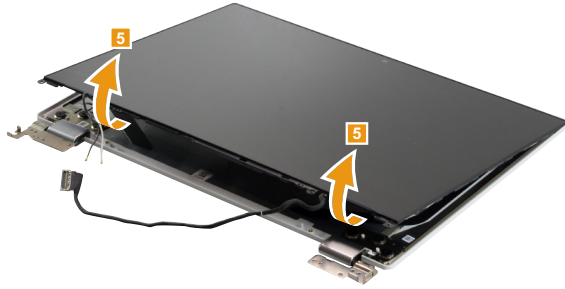
Step	Screw (quantity)	Color	Torque
3	M2.0 × 2.5 mm, Phillips-head, nylok-coated (4) LCD BEZELTO COVER	Black	1.0-1.5 kgf*cm

Gently pull out the two pieces of adhesive tape with tweezers in the direction shown by arrows **4**.



Figure 13. Removal steps of LCD unit (continued)

Lift the LCD unit **5**.



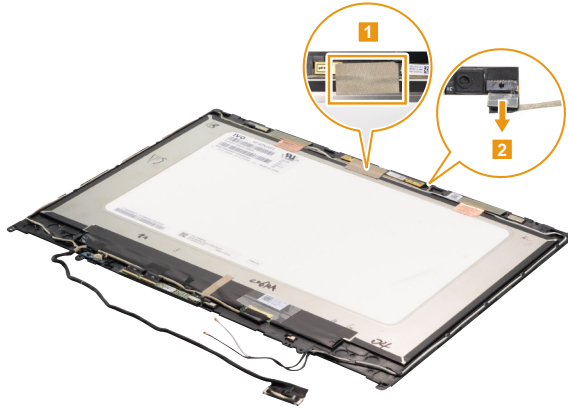
1140 Camera board, sensor board and EDP cable

For access, remove these FRUs in order:

- “1010 Base cover” on page 31
- “1020 Battery pack” on page 33
- “1030 Solid state disk” on page 34
- “1040 Hard disk drive” on page 35
- “1050 PCI Express Mini Card for wireless LAN” on page 36
- “1060 Speakers” on page 38
- “1080 Fan and Heat Sink assembly” on page 41
- “1090 IO board” on page 44
- “1100 System board” on page 46
- “1110 Upper case” on page 48
- “1130 LCD unit” on page 51

Figure 14. Removal steps of camera board, sensor board and EDP cable

Peel off the tape that secures the camera board **1**. Unplug the connector in the direction shown by arrow **2**.



When installing: Make sure that the connector is attached firmly.

Figure 14. Removal steps of camera board, sensor board and EDP cable (continued)

Remove the camera board **3**.



Unplug the connector in the direction shown by arrow **4**.

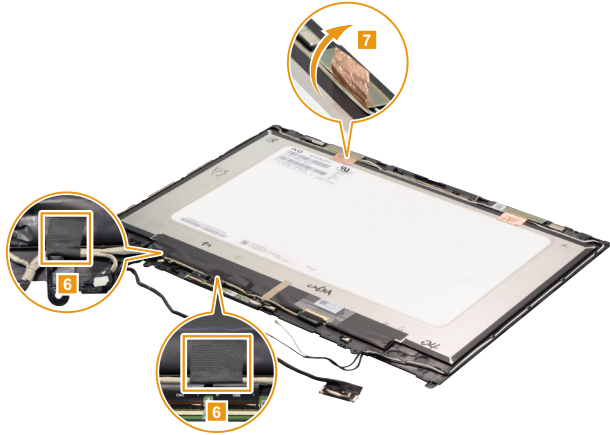


Remove the sensor board **5**.



Figure 14. Removal steps of camera board, sensor board and EDP cable (continued)

Peel off the tape **6** and **7**.



Detach the two connectors in the direction shown by arrows **8**.

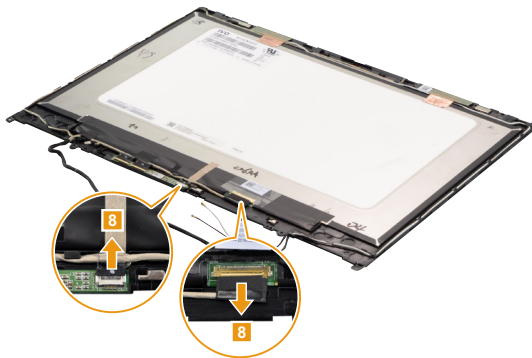
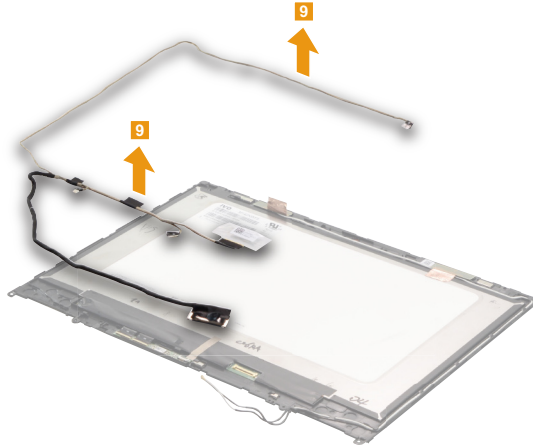


Figure 14. Removal steps of camera board, sensor board and EDP cable (continued)

Remove the EDP cable 9.



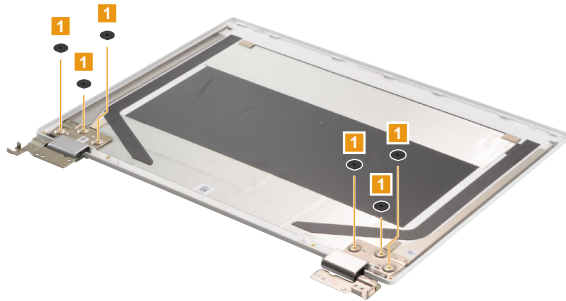
1150 LCD hinges

For access, remove these FRUs in order:

- “1010 Base cover” on page 31
- “1020 Battery pack” on page 33
- “1030 Solid state disk” on page 34
- “1040 Hard disk drive” on page 35
- “1050 PCI Express Mini Card for wireless LAN” on page 36
- “1060 Speakers” on page 38
- “1080 Fan and Heat Sink assembly” on page 41
- “1090 IO board” on page 44
- “1100 System board” on page 46
- “1110 Upper case” on page 48
- “1130 LCD unit” on page 51
- “1140 Camera board, sensor board and EDP cable” on page 54

Figure 15. LCD hinges

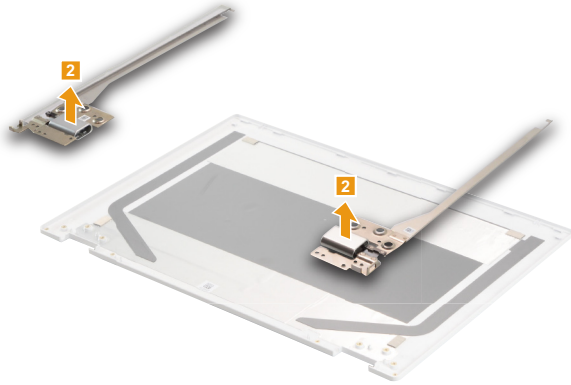
Remove the screws **1**.



Step	Screw (quantity)	Color	Torque
1	M2.5 × 2.5 mm, Phillips-head, nylok-coated (6) HINGE TO LCD COVER	Black	1.5-2.0 kgf*cm

Figure 15. Removal steps of LCD hinges (continued)

Then release the hinges in the direction shown by arrows **2**.



1160 Fingerprint module (on select models)

For access, remove these FRUs in order:

- “1010 Base cover” on page 31
- “1020 Battery pack” on page 33

Figure 16. Removal steps of fingerprint module

Remove the screw **1**, then remove the fingerprint bracket **2**.

Step	Screw (quantity)	Color	Torque
1	M2.0 x 2.5 mm, Phillips-head, nylok-coated (1) FINGER PINTER TO UPPER	Silver	1.0-1.5 kgf*cm

Figure 16. Removal steps of fingerprint module (continued)

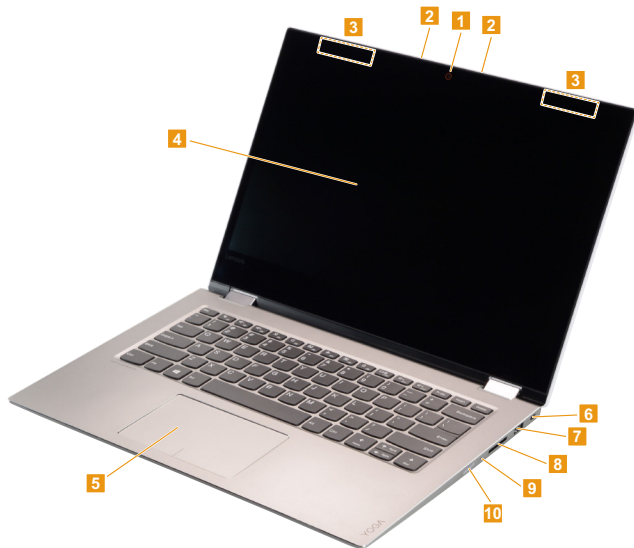
Remove the fingerprint board **3**.

Locations

Front and right-side view

- 1 Integrated camera
- 2 Built-in microphone
- 3 Wireless LAN antennas
- 4 Multi-touch screen
- 5 Touchpad
- 6 Kensington mini security slot
- 7 USB 3.0 port
- 8 Memory card slot
- 9 Novo button
- 10 Power button

Note: For the description of each indicator, see “Status indicators” on page 27.



Bottom and left-side view

- 1 Speakers
- 2 AC power adapter jack
- 3 Battery status indicator
- Note:** For the description of each indicator, see “Status indicators” on page 27.
- 4 HDMI port
- 5 USB 3.0 port
- 6 Type-C port
- 7 Combo audio jack



Rear view

1 Ventilation slots



Parts list

This section presents the following service parts:

- “Overall” on page 66
- “LCD FRUs” on page 77
- “AC adapters” on page 79
- “Screws” on page 79

Notes:

- Each FRU is available for all types or models, unless specific types or models are specified.

Attention:

Do not attempt to replace an FRU on your own. If an FRU is damaged, contact a Lenovo authorized servicer or a marketing representative for replacement or repair. Only qualified technicians can inspect or repair this product.

Overall

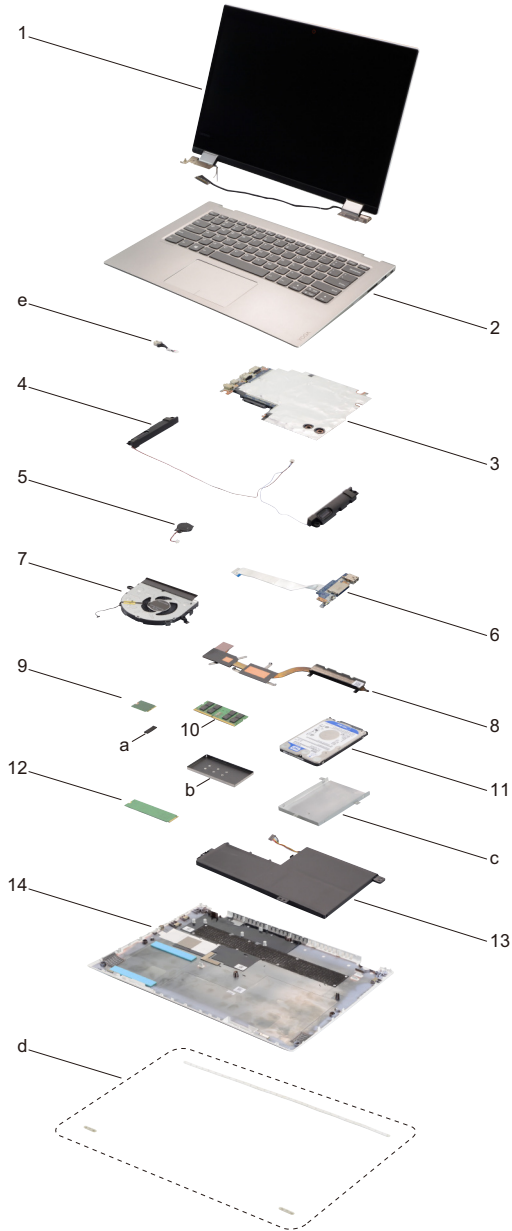


Table 5. Parts list—Overall

No.	FRU	FRU no.	CRU ID.
a-e	see "Miscellaneous parts" on page 78.		
1	LCD unit (see "LCD FRUs" on page 77.)		
2	Upper Case C80X8YOGAOFPNBLW/KBUS	5CB0N67350	N
2	Upper Case C80X8YOGAOFPNBLW/KBGK	5CB0N67649	N
2	UpperCaseC80X8YGOBFPNBLW/KBUSINT'E	5CB0N67474	N
2	Upper Case C80X8YOGAOFPNBLW/KBKO	5CB0N67393	N
2	Upper Case C80X8YOGAOFPNBLW/KBCH	5CB0N67692	N
2	Upper Case C80X8YOGAOFPNBLW/KBRU	5CB0N67354	N
2	UpperCaseC80X8YOGAOFPNBLW/KBAR-E	5CB0N67694	N
2	Upper Case C80X8YOGAOFPNBLW/KBHB	5CB0N67690	N
2	Upper Case C80X8YOGAOFPNBLW/KBTI	5CB0N67761	N
2	Upper CaseC80X8YGOBFPNBLW/KBINDIA	5CB0N67550	N
2	Upper Case C80X8YOGAOFPNBLW/KBUK	5CB0N67659	N
2	Upper Case C80X8YOGAOFPNBLW/KBIT	5CB0N67408	N
2	Upper Case C80X8YOGAOFPNBLW/KBSP	5CB0N67419	N
2	Upper Case C80X8YOGAOFPNBLW/KBTR	5CB0N67770	N
2	Upper Case C80X8YOGAOFPNBLW/KBPO	5CB0N67767	N
2	Upper Case C80X8YOGAOFPNBLW/KBLA	5CB0N67643	N
2	UpperCaseC80X8YOGAOFPNBLW/KBCE-E	5CB0N67341	N
2	Upper Case C80X8YOGAOFPNBLW/KBND	5CB0N67630	N
2	Upper Case C80X8YOGAOFPNBLW/KBFR	5CB0N67576	N
2	Upper Case C80X8YOGAOFPNBLW/KBGR	5CB0N67486	N
2	Upper Case C80X8YOGAOFPNBLW/KBZ	5CB0N67706	N
2	Upper Case C80X8YOGAOFPNBLW/KBNL	5CB0N67628	N
2	Upper Case C80X8YOGAOFPNBLW/KBHG	5CB0N67457	N
2	Upper Case C80X8YOGAOFPNBLW/KBBE	5CB0N67596	N
2	Upper CaseC80X8YOGAOFPNBLW/KBICE	5CB0N67653	N
2	Upper Case C80X8YOGAOFPNBLW/KBSA	5CB0N67472	N
2	Upper Case C80X8YOGAOFPNBLW/KBSW	5CB0N67334	N
2	Upper Case C80X8YOGAOFPNBLW/KBBU	5CB0N67460	N
2	Upper CaseC80X8YGOBFPNBLW/KBCZ-SK	5CB0N67494	N
2	Upper CaseC80X8YGOBFPNBLW/KBFR-AR	5CB0N67488	N
2	Upper CaseC80X8YOGAOFPNBLW/KBUKR	5CB0N67599	N
2	Upper Case C 80X8YOGAOFBPLW/KBUS	5CB0N67517	N
2	Upper Case C 80X8YOGAOFBPLW/KBGK	5CB0N67433	N
2	UpperCaseC80X8YGOBFPBLW/KBUSINT'E	5CB0N67585	N
2	Upper Case C 80X8YOGAOFBPLW/KBKO	5CB0N67737	N
2	Upper Case C 80X8YOGAOFBPLW/KBCH	5CB0N67444	N
2	Upper Case C 80X8YOGAOFBPLW/KBRU	5CB0N67477	N
2	Upper CaseC80X8YOGAOFBPLW/KBAR-E	5CB0N67403	N
2	Upper Case C 80X8YOGAOFBPLW/KBHB	5CB0N67425	N
2	Upper Case C 80X8YOGAOFBPLW/KBTI	5CB0N67377	N
2	UpperCaseC80X8YOGAOFBPLW/KBINDIA	5CB0N67708	N
2	Upper Case C 80X8YOGAOFBPLW/KBUK	5CB0N67765	N
2	Upper Case C 80X8YOGAOFBPLW/KBIT	5CB0N67606	N
2	Upper Case C 80X8YOGAOFBPLW/KBSP	5CB0N67593	N
2	Upper Case C 80X8YOGAOFBPLW/KBTR	5CB0N67502	N
2	Upper Case C 80X8YOGAOFBPLW/KBPO	5CB0N67759	N

Table 5. Parts list—Overall (continued)

No.	FRU	FRU no.	CRU ID.
2	Upper Case C 80X8YOGAOFBPLW/KBLA	5CB0N67553	N
2	Upper CaseC80X8YOGAOFBPLW/KBCF-E	5CB0N67720	N
2	Upper Case C 80X8YOGAOFBPLW/KBND	5CB0N67633	N
2	Upper Case C 80X8YOGAOFBPLW/KBFR	5CB0N67383	N
2	Upper Case C 80X8YOGAOFBPLW/KBGR	5CB0N67360	N
2	Upper Case C 80X8YOGAOFBPLW/KBBZ	5CB0N67730	N
2	Upper Case C 80X8YOGAOFBPLW/KBNL	5CB0N67556	N
2	Upper Case C 80X8YOGAOFBPLW/KBHG	5CB0N67662	N
2	Upper Case C 80X8YOGAOFBPLW/KBBE	5CB0N67450	N
2	Upper Case C80X8YOGAOFBPLW/KBICE	5CB0N67416	N
2	Upper Case C 80X8YOGAOFBPLW/KBSA	5CB0N67679	N
2	Upper Case C 80X8YOGAOFBPLW/KBSW	5CB0N67724	N
2	Upper Case C 80X8YOGAOFBPLW/KBBU	5CB0N67779	N
2	UpperCaseC80X8YOGAOFBPLW/KBCZ-SK	5CB0N67454	N
2	UpperCaseC80X8YOGAOFBPLW/KBFR-AR	5CB0N67696	N
2	Upper Case C80X8YOGAOFBPLW/KBUKR	5CB0N67544	N
2	Upper Case C80X8YOGAOFBPLW/KBUSA	5CB0N67492	N
2	Upper CaseC80X8YOGAOFBPLW/KBUS	5CB0N67546	N
2	Upper CaseC80X8YOGAOFBPLW/KBGK	5CB0N67359	N
2	UpperCaseC80X8OFBPLW/KBUSINT'E	5CB0N67598	N
2	Upper CaseC80X8YOGAOFBPLW/KBKO	5CB0N67721	N
2	Upper CaseC80X8YOGAOFBPLW/KBCH	5CB0N67746	N
2	Upper CaseC80X8YOGAOFBPLW/KBRU	5CB0N67436	N
2	Upper CaseC80X8YOGAOFBPLW/KBAR-E	5CB0N67430	N
2	Upper CaseC80X8YOGAOFBPLW/KBHB	5CB0N67394	N
2	Upper CaseC80X8YOGAOFBPLW/KBTI	5CB0N67689	N
2	UpperCaseC80X8YOGAOFBPLW/KBINDIA	5CB0N67523	N
2	Upper CaseC80X8YOGAOFBPLW/KBUK	5CB0N67741	N
2	Upper CaseC80X8YOGAOFBPLW/KBIT	5CB0N67318	N
2	Upper CaseC80X8YOGAOFBPLW/KBSP	5CB0N67351	N
2	Upper CaseC80X8YOGAOFBPLW/KBTR	5CB0N67623	N
2	Upper CaseC80X8YOGAOFBPLW/KBPO	5CB0N67654	N
2	Upper CaseC80X8YOGAOFBPLW/KBLA	5CB0N67652	N
2	Upper CaseC80X8YOGAOFBPLW/KBCF-E	5CB0N67337	N
2	Upper CaseC80X8YOGAOFBPLW/KBND	5CB0N67443	N
2	Upper CaseC80X8YOGAOFBPLW/KBFR	5CB0N67763	N
2	Upper CaseC80X8YOGAOFBPLW/KBGR	5CB0N67376	N
2	Upper CaseC80X8YOGAOFBPLW/KBBZ	5CB0N67382	N
2	Upper CaseC80X8YOGAOFBPLW/KBNL	5CB0N67355	N
2	Upper CaseC80X8YOGAOFBPLW/KBHG	5CB0N67755	N
2	Upper CaseC80X8YOGAOFBPLW/KBBE	5CB0N67698	N
2	UpperCaseC80X8YOGAOFBPLW/KBICE	5CB0N67645	N
2	Upper CaseC80X8YOGAOFBPLW/KBSA	5CB0N67480	N
2	Upper CaseC80X8YOGAOFBPLW/KBSW	5CB0N67404	N
2	Upper CaseC80X8YOGAOFBPLW/KBBU	5CB0N67663	N
2	UpperCaseC80X8YOGAOFBPLW/KBCZ-SK	5CB0N67729	N
2	UpperCaseC80X8YOGAOFBPLW/KBFR-AR	5CB0N67478	N
2	UpperCaseC80X8YOGAOFBPLW/KBUKR	5CB0N67681	N

Table 5. Parts list—Overall (continued)

No.	FRU	FRU no.	CRU ID.
2	Upper Case C80X8YOGAONFPBLW/KBUS	5CB0N67511	N
2	Upper Case C80X8YOGAONFPBLW/KBGK	5CB0N67421	N
2	UpperCaseC80X8YGOBNFPBLW/KBUSINT'E	5CB0N67719	N
2	Upper Case C80X8YOGAONFPBLW/KBKO	5CB0N67442	N
2	Upper Case C80X8YOGAONFPBLW/KBCH	5CB0N67379	N
2	Upper Case C80X8YOGAONFPBLW/KBRU	5CB0N67372	N
2	UpperCaseC80X8YOGAONFPBLW/KBAR-E	5CB0N67420	N
2	Upper Case C80X8YOGAONFPBLW/KBHB	5CB0N67567	N
2	Upper Case C80X8YOGAONFPBLW/KBTI	5CB0N67701	N
2	Upper CaseC80X8YGOBNFPBLW/KBINDIA	5CB0N67738	N
2	Upper Case C80X8YOGAONFPBLW/KBUK	5CB0N67427	N
2	Upper Case C80X8YOGAONFPBLW/KBIT	5CB0N67332	N
2	Upper Case C80X8YOGAONFPBLW/KBSP	5CB0N67574	N
2	Upper Case C80X8YOGAONFPBLW/KBTR	5CB0N67482	N
2	Upper Case C80X8YOGAONFPBLW/KBPO	5CB0N67631	N
2	Upper Case C80X8YOGAONFPBLW/KBLA	5CB0N67772	N
2	UpperCaseC80X8YOGAONFPBLW/KBCF-E	5CB0N67414	N
2	Upper Case C80X8YOGAONFPBLW/KBND	5CB0N67577	N
2	Upper Case C80X8YOGAONFPBLW/KBFR	5CB0N67597	N
2	Upper Case C80X8YOGAONFPBLW/KBGR	5CB0N67437	N
2	Upper Case C80X8YOGAONFPBLW/KBBZ	5CB0N67588	N
2	Upper Case C80X8YOGAONFPBLW/KBNL	5CB0N67609	N
2	Upper Case C80X8YOGAONFPBLW/KBHG	5CB0N67595	N
2	Upper Case C80X8YOGAONFPBLW/KBBE	5CB0N67709	N
2	Upper CaseC80X8YOGAONFPBLW/KBICE	5CB0N67392	N
2	Upper Case C80X8YOGAONFPBLW/KBSA	5CB0N67496	N
2	Upper Case C80X8YOGAONFPBLW/KBSW	5CB0N67778	N
2	Upper Case C80X8YOGAONFPBLW/KBBU	5CB0N67734	N
2	Upper CaseC80X8YGOBNFPBLW/KBCZ-SK	5CB0N67728	N
2	Upper CaseC80X8YGOBNFPBLW/KBFR-AR	5CB0N67406	N
2	Upper CaseC80X8YOGAONFPBLW/KBUKR	5CB0N67476	N
2	Upper CaseC80X8YOGAONFPBLW/KBUSA	5CB0N67525	N
2	Upper CaseC80X8YOGAMGRFPNBLW/KBUS	5CB0N67447	N
2	Upper CaseC80X8YOGAMGRFPNBLW/KBGK	5CB0N67621	N
2	UpperCaseC80X8MGRFPNBLW/KBUSINT'E	5CB0N67632	N
2	Upper CaseC80X8YOGAMGRFPNBLW/KBKO	5CB0N67531	N
2	Upper CaseC80X8YOGAMGRFPNBLW/KBCH	5CB0N67468	N
2	Upper CaseC80X8YOGAMGRFPNBLW/KBRU	5CB0N67522	N
2	Upper CaseC80X8YGMGRFPNBLW/KBAR-E	5CB0N67463	N
2	Upper CaseC80X8YOGAMGRFPNBLW/KBHB	5CB0N67775	N
2	Upper CaseC80X8YOGAMGRFPNBLW/KBTI	5CB0N67788	N
2	UpperCaseC80X8YGMGRFPNBLW/KBINDIA	5CB0N67684	N
2	Upper CaseC80X8YOGAMGRFPNBLW/KBUK	5CB0N67323	N
2	Upper CaseC80X8YOGAMGRFPNBLW/KBIT	5CB0N67727	N
2	Upper CaseC80X8YOGAMGRFPNBLW/KBSP	5CB0N67339	N
2	Upper CaseC80X8YOGAMGRFPNBLW/KBTR	5CB0N67592	N
2	Upper CaseC80X8YOGAMGRFPNBLW/KBPO	5CB0N67644	N
2	Upper CaseC80X8YOGAMGRFPNBLW/KBLA	5CB0N67435	N

Table 5. Parts list—Overall (continued)

No.	FRU	FRU no.	CRU ID.
2	Upper CaseC80X8YGMGRFPNBLW/KBCF-E	5CB0N67764	N
2	Upper CaseC80X8YOGAMGRFPNBLW/KBND	5CB0N67748	N
2	Upper CaseC80X8YOGAMGRFPNBLW/KBFR	5CB0N67571	N
2	Upper CaseC80X8YOGAMGRFPNBLW/KBGR	5CB0N67426	N
2	Upper CaseC80X8YOGAMGRFPNBLW/KBBZ	5CB0N67713	N
2	Upper CaseC80X8YOGAMGRFPNBLW/KBNL	5CB0N67608	N
2	Upper CaseC80X8YOGAMGRFPNBLW/KBHG	5CB0N67347	N
2	Upper CaseC80X8YOGAMGRFPNBLW/KBBE	5CB0N67490	N
2	UpperCaseC80X8YOGAMGRFPNBLW/KBICE	5CB0N67400	N
2	Upper CaseC80X8YOGAMGRFPNBLW/KBSA	5CB0N67605	N
2	Upper CaseC80X8YOGAMGRFPNBLW/KBSW	5CB0N67424	N
2	Upper CaseC80X8YOGAMGRFPNBLW/KBBU	5CB0N67618	N
2	UpperCaseC80X8YGMGRFPNBLW/KBCZ-SK	5CB0N67340	N
2	UpperCaseC80X8YGMGRFPNBLW/KBFR-AR	5CB0N67389	N
2	UpperCaseC80X8YOGAMGRFPNBLW/KBUKR	5CB0N67521	N
2	Upper Case C80X8YOGAMGRFPBLW/KBUS	5CB0N67615	N
2	Upper Case C80X8YOGAMGRFPBLW/KBGK	5CB0N67743	N
2	UpperCaseC80X8YGMGRFPBLW/KBUSINT'E	5CB0N67530	N
2	Upper Case C80X8YOGAMGRFPBLW/KBKO	5CB0N67637	N
2	Upper Case C80X8YOGAMGRFPBLW/KBCH	5CB0N67735	N
2	Upper Case C80X8YOGAMGRFPBLW/KBRU	5CB0N67397	N
2	UpperCaseC80X8YOGAMGRFPBLW/KBAR-E	5CB0N67551	N
2	Upper Case C80X8YOGAMGRFPBLW/KBHB	5CB0N67699	N
2	Upper Case C80X8YOGAMGRFPBLW/KBTI	5CB0N67685	N
2	Upper CaseC80X8YGMGRFPBLW/KBINDIA	5CB0N67387	N
2	Upper Case C80X8YOGAMGRFPBLW/KBUK	5CB0N67504	N
2	Upper Case C80X8YOGAMGRFPBLW/KBIT	5CB0N67342	N
2	Upper Case C80X8YOGAMGRFPBLW/KBSP	5CB0N67750	N
2	Upper Case C80X8YOGAMGRFPBLW/KBTR	5CB0N67483	N
2	Upper Case C80X8YOGAMGRFPBLW/KBPO	5CB0N67405	N
2	Upper Case C80X8YOGAMGRFPBLW/KBLA	5CB0N67469	N
2	UpperCaseC80X8YOGAMGRFPBLW/KBCF-E	5CB0N67349	N
2	Upper Case C80X8YOGAMGRFPBLW/KBND	5CB0N67636	N
2	Upper Case C80X8YOGAMGRFPBLW/KBFR	5CB0N67458	N
2	Upper Case C80X8YOGAMGRFPBLW/KBGR	5CB0N67784	N
2	Upper Case C80X8YOGAMGRFPBLW/KBBZ	5CB0N67773	N
2	Upper Case C80X8YOGAMGRFPBLW/KBNL	5CB0N67594	N
2	Upper Case C80X8YOGAMGRFPBLW/KBHG	5CB0N67600	N
2	Upper Case C80X8YOGAMGRFPBLW/KBBE	5CB0N67366	N
2	Upper CaseC80X8YOGAMGRFPBLW/KBICE	5CB0N67581	N
2	Upper Case C80X8YOGAMGRFPBLW/KBSA	5CB0N67370	N
2	Upper Case C80X8YOGAMGRFPBLW/KBSW	5CB0N67589	N
2	Upper Case C80X8YOGAMGRFPBLW/KBBU	5CB0N67672	N
2	Upper CaseC80X8YGMGRFPBLW/KBCZ-SK	5CB0N67723	N
2	Upper CaseC80X8YGMGRFPBLW/KBFR-AR	5CB0N67650	N
2	Upper CaseC80X8YOGAMGRFPBLW/KBUKR	5CB0N67344	N
2	Upper CaseC80X8YOGAMGRFPBLW/KBUSA	5CB0N67552	N
2	UpperCaseC80X8YOGAMGRFPNBLW/KBUS	5CB0N67695	N

Table 5. Parts list—Overall (continued)

No.	FRU	FRU no.	CRU ID.
2	UpperCaseC80X8YOGAMGRNFPNBLW/KBGK	5CB0N67418	N
2	Upper CaseC80X8YGMGRNFPNBLW/KBUSI	5CB0N67367	N
2	UpperCaseC80X8YOGAMGRNFPNBLW/KBKO	5CB0N67532	N
2	UpperCaseC80X8YOGAMGRNFPNBLW/KBCH	5CB0N67409	N
2	UpperCaseC80X8YOGAMGRNFPNBLW/KBRU	5CB0N67691	N
2	UpperCaseC80X8YGMGRNFPNBLW/KBAR-E	5CB0N67545	N
2	UpperCaseC80X8YOGAMGRNFPNBLW/KBHB	5CB0N67475	N
2	UpperCaseC80X8YOGAMGRNFPNBLW/KBTI	5CB0N67614	N
2	UpperCaseC80X8YGMGRNFPNBLW/KBINDIA	5CB0N67461	N
2	UpperCaseC80X8YOGAMGRNFPNBLW/KBUK	5CB0N67527	N
2	UpperCaseC80X8YOGAMGRNFPNBLW/KBIT	5CB0N67562	N
2	UpperCaseC80X8YOGAMGRNFPNBLW/KBSP	5CB0N67543	N
2	UpperCaseC80X8YOGAMGRNFPNBLW/KBTR	5CB0N67688	N
2	UpperCaseC80X8YOGAMGRNFPNBLW/KBPO	5CB0N67352	N
2	UpperCaseC80X8YOGAMGRNFPNBLW/KBLA	5CB0N67780	N
2	UpperCaseC80X8YGMGRNFPNBLW/KBCF-E	5CB0N67673	N
2	UpperCaseC80X8YOGAMGRNFPNBLW/KBND	5CB0N67423	N
2	UpperCaseC80X8YOGAMGRNFPNBLW/KBFR	5CB0N67624	N
2	UpperCaseC80X8YOGAMGRNFPNBLW/KBGR	5CB0N67607	N
2	UpperCaseC80X8YOGAMGRNFPNBLW/KBBZ	5CB0N67415	N
2	UpperCaseC80X8YOGAMGRNFPNBLW/KBNL	5CB0N67417	N
2	UpperCaseC80X8YOGAMGRNFPNBLW/KBHG	5CB0N67658	N
2	UpperCaseC80X8YOGAMGRNFPNBLW/KBBE	5CB0N67549	N
2	Upper CaseC80X8YGMGRNFPNBLW/KBICE	5CB0N67500	N
2	UpperCaseC80X8YOGAMGRNFPNBLW/KBSA	5CB0N67362	N
2	UpperCaseC80X8YOGAMGRNFPNBLW/KBSW	5CB0N67703	N
2	UpperCaseC80X8YOGAMGRNFPNBLW/KBBU	5CB0N67514	N
2	UpperCaseC80X8MGRNFPNBLW/KBCZ-SK	5CB0N67364	N
2	UpperCaseC80X8MGRNFPNBLW/KBFR-AR	5CB0N67412	N
2	Upper CaseC80X8YGMGRNFPNBLW/KBUKR	5CB0N67754	N
2	Upper CaseC80X8YOGAMGRNFPBLW/KBUS	5CB0N67736	N
2	Upper CaseC80X8YOGAMGRNFPBLW/KBGK	5CB0N67619	N
2	UpperCaseC80X8MGRNFPBLW/KBUSINT'E	5CB0N67740	N
2	Upper CaseC80X8YOGAMGRNFPBLW/KBKO	5CB0N67506	N
2	Upper CaseC80X8YOGAMGRNFPBLW/KBCH	5CB0N67520	N
2	Upper CaseC80X8YOGAMGRNFPBLW/KBRU	5CB0N67465	N
2	Upper CaseC80X8YGMGRNFPBLW/KBAR-E	5CB0N67371	N
2	Upper CaseC80X8YOGAMGRNFPBLW/KBHB	5CB0N67676	N
2	Upper CaseC80X8YOGAMGRNFPBLW/KBTI	5CB0N67373	N
2	UpperCaseC80X8YGMGRNFPBLW/KBINDIA	5CB0N67601	N
2	Upper CaseC80X8YOGAMGRNFPBLW/KBUK	5CB0N67512	N
2	Upper CaseC80X8YOGAMGRNFPBLW/KBIT	5CB0N67333	N
2	Upper CaseC80X8YOGAMGRNFPBLW/KBSP	5CB0N67547	N
2	Upper CaseC80X8YOGAMGRNFPBLW/KBTR	5CB0N67407	N
2	Upper CaseC80X8YOGAMGRNFPBLW/KBPO	5CB0N67391	N
2	Upper CaseC80X8YOGAMGRNFPBLW/KBLA	5CB0N67459	N
2	Upper CaseC80X8YGMGRNFPBLW/KBCF-E	5CB0N67479	N
2	Upper CaseC80X8YOGAMGRNFPBLW/KBND	5CB0N67398	N

Table 5. Parts list—Overall (continued)

No.	FRU	FRU no.	CRU ID.
2	Upper CaseC80X8YOGAMGRNFPBLW/KBFR	5CB0N67446	N
2	Upper CaseC80X8YOGAMGRNFPBLW/KBGR	5CB0N67787	N
2	Upper CaseC80X8YOGAMGRNFPBLW/KBBZ	5CB0N67704	N
2	Upper CaseC80X8YOGAMGRNFPBLW/KNL	5CB0N67639	N
2	Upper CaseC80X8YOGAMGRNFPBLW/KBHG	5CB0N67524	N
2	Upper CaseC80X8YOGAMGRNFPBLW/KBBE	5CB0N67515	N
2	UpperCaseC80X8YOGAMGRNFPBLW/KBICE	5CB0N67557	N
2	Upper CaseC80X8YOGAMGRNFPBLW/KBSA	5CB0N67620	N
2	Upper CaseC80X8YOGAMGRNFPBLW/KBSW	5CB0N67356	N
2	Upper CaseC80X8YOGAMGRNFPBLW/KBBU	5CB0N67439	N
2	UpperCaseC80X8YGMGRNFPBLW/KBCZ-SK	5CB0N67651	N
2	UpperCaseC80X8YGMGRNFPBLW/KBFR-AR	5CB0N67396	N
2	UpperCaseC80X8YOGAMGRNFPBLW/KBUKR	5CB0N67744	N
2	UpperCaseC80X8YOGAMGRNFPBLW/KBUSA	5CB0N67495	N
2	Upper CaseC80X8YOGAGDMFPNBLW/KBUS	5CB0N67481	N
2	Upper CaseC80X8YOGAGDMFPNBLW/KBGK	5CB0N67322	N
2	UpperCaseC80X8GDMFPNBLW/KBUSINT'E	5CB0N67467	N
2	Upper CaseC80X8YOGAGDMFPNBLW/KBKO	5CB0N67508	N
2	Upper CaseC80X8YOGAGDMFPNBLW/KBCH	5CB0N67670	N
2	Upper CaseC80X8YOGAGDMFPNBLW/KBRU	5CB0N67327	N
2	Upper CaseC80X8YGGDMFPNBLW/KBAR-E	5CB0N67336	N
2	Upper CaseC80X8YOGAGDMFPNBLW/KBHB	5CB0N67537	N
2	Upper CaseC80X8YOGAGDMFPNBLW/KBTI	5CB0N67348	N
2	UpperCaseC80X8YGGDMFPNBLW/KBINDIA	5CB0N67452	N
2	Upper CaseC80X8YOGAGDMFPNBLW/KBUK	5CB0N67711	N
2	Upper CaseC80X8YOGAGDMFPNBLW/KBIT	5CB0N67554	N
2	Upper CaseC80X8YOGAGDMFPNBLW/KBSP	5CB0N67586	N
2	Upper CaseC80X8YOGAGDMFPNBLW/KBTR	5CB0N67331	N
2	Upper CaseC80X8YOGAGDMFPNBLW/KBPO	5CB0N67612	N
2	Upper CaseC80X8YOGAGDMFPNBLW/KBLA	5CB0N67718	N
2	Upper CaseC80X8YGGDMFPNBLW/KBCF-E	5CB0N67343	N
2	Upper CaseC80X8YOGAGDMFPNBLW/KBND	5CB0N67785	N
2	Upper CaseC80X8YOGAGDMFPNBLW/KBFR	5CB0N67634	N
2	Upper CaseC80X8YOGAGDMFPNBLW/KBGR	5CB0N67516	N
2	Upper CaseC80X8YOGAGDMFPNBLW/KBBZ	5CB0N67381	N
2	Upper CaseC80X8YOGAGDMFPNBLW/KNL	5CB0N67751	N
2	Upper CaseC80X8YOGAGDMFPNBLW/KBHG	5CB0N67762	N
2	Upper CaseC80X8YOGAGDMFPNBLW/KBBE	5CB0N67760	N
2	UpperCaseC80X8YOGAGDMFPNBLW/KBICE	5CB0N67568	N
2	Upper CaseC80X8YOGAGDMFPNBLW/KBSA	5CB0N67529	N
2	Upper CaseC80X8YOGAGDMFPNBLW/KBSW	5CB0N67604	N
2	Upper CaseC80X8YOGAGDMFPNBLW/KBBU	5CB0N67324	N
2	UpperCaseC80X8YGGDMFPNBLW/KBCZ-SK	5CB0N67345	N
2	UpperCaseC80X8YGGDMFPNBLW/KBFR-AR	5CB0N67682	N
2	UpperCaseC80X8YOGAGDMFPNBLW/KBUKR	5CB0N67726	N
2	Upper Case C80X8YOGAGDMFPBLW/KBUS	5CB0N67686	N
2	Upper Case C80X8YOGAGDMFPBLW/KBGK	5CB0N67752	N
2	UpperCaseC80X8YGGDMFPBLW/KBUSINT'E	5CB0N67559	N

Table 5. Parts list—Overall (continued)

No.	FRU	FRU no.	CRU ID.
2	Upper Case C80X8YOGAGDMFPBLW/KBKO	5CB0N67732	N
2	Upper Case C80X8YOGAGDMFPBLW/KBCH	5CB0N67625	N
2	Upper Case C80X8YOGAGDMFPBLW/KBRU	5CB0N67440	N
2	UpperCaseC80X8YOGAGDMFPBLW/KBAR-E	5CB0N67626	N
2	Upper Case C80X8YOGAGDMFPBLW/KBHB	5CB0N67320	N
2	Upper Case C80X8YOGAGDMFPBLW/KBTI	5CB0N67499	N
2	Upper CaseC80X8YGGDMFPBLW/KBINDIA	5CB0N67646	N
2	Upper Case C80X8YOGAGDMFPBLW/KBUK	5CB0N67441	N
2	Upper Case C80X8YOGAGDMFPBLW/KBIT	5CB0N67501	N
2	Upper Case C80X8YOGAGDMFPBLW/KBSP	5CB0N67357	N
2	Upper Case C80X8YOGAGDMFPBLW/KBTR	5CB0N67570	N
2	Upper Case C80X8YOGAGDMFPBLW/KBPO	5CB0N67401	N
2	Upper Case C80X8YOGAGDMFPBLW/KBLA	5CB0N67655	N
2	UpperCaseC80X8YOGAGDMFPBLW/KBCF-E	5CB0N67786	N
2	Upper Case C80X8YOGAGDMFPBLW/KBND	5CB0N67674	N
2	Upper Case C80X8YOGAGDMFPBLW/KBFR	5CB0N67671	N
2	Upper Case C80X8YOGAGDMFPBLW/KBGR	5CB0N67745	N
2	Upper Case C80X8YOGAGDMFPBLW/KBBZ	5CB0N67448	N
2	Upper Case C80X8YOGAGDMFPBLW/KBNL	5CB0N67485	N
2	Upper Case C80X8YOGAGDMFPBLW/KBHG	5CB0N67509	N
2	Upper Case C80X8YOGAGDMFPBLW/KBBE	5CB0N67579	N
2	Upper CaseC80X8YOGAGDMFPBLW/KBICE	5CB0N67497	N
2	Upper Case C80X8YOGAGDMFPBLW/KBSA	5CB0N67540	N
2	Upper Case C80X8YOGAGDMFPBLW/KBSW	5CB0N67715	N
2	Upper Case C80X8YOGAGDMFPBLW/KBBU	5CB0N67533	N
2	Upper CaseC80X8YGGDMFPBLW/KBCZ-SK	5CB0N67445	N
2	Upper CaseC80X8YGGDMFPBLW/KBFR-AR	5CB0N67513	N
2	Upper CaseC80X8YOGAGDMFPBLW/KBUKR	5CB0N67683	N
2	Upper CaseC80X8YOGAGDMFPBLW/KBUSA	5CB0N67617	N
2	UpperCaseC80X8YOGAGDMNFPNBLW/KBUS	5CB0N67346	N
2	UpperCaseC80X8YOGAGDMNFPNBLW/KBGK	5CB0N67510	N
2	UpperCaseC80X8GDMNFPNBLW/KBUSINT'E	5CB0N67575	N
2	UpperCaseC80X8YOGAGDMNFPNBLW/KBKO	5CB0N67669	N
2	UpperCaseC80X8YOGAGDMNFPNBLW/KBCH	5CB0N67505	N
2	UpperCaseC80X8YOGAGDMNFPNBLW/KBRU	5CB0N67328	N
2	UpperCaseC80X8YGGDMNFPNBLW/KBAR-E	5CB0N67473	N
2	UpperCaseC80X8YOGAGDMNFPNBLW/KBHB	5CB0N67584	N
2	UpperCaseC80X8YOGAGDMNFPNBLW/KBTI	5CB0N67665	N
2	UpperCaseC80X8YGGDMNFPNBLW/KBINDIA	5CB0N67603	N
2	UpperCaseC80X8YOGAGDMNFPNBLW/KBUK	5CB0N67365	N
2	UpperCaseC80X8YOGAGDMNFPNBLW/KBIT	5CB0N67493	N
2	UpperCaseC80X8YOGAGDMNFPNBLW/KBSP	5CB0N67402	N
2	UpperCaseC80X8YOGAGDMNFPNBLW/KBTR	5CB0N67717	N
2	UpperCaseC80X8YOGAGDMNFPNBLW/KBPO	5CB0N67455	N
2	UpperCaseC80X8YOGAGDMNFPNBLW/KBLA	5CB0N67687	N
2	UpperCaseC80X8YGGDMNFPNBLW/KBCF-E	5CB0N67707	N
2	UpperCaseC80X8YOGAGDMNFPNBLW/KBND	5CB0N67657	N
2	UpperCaseC80X8YOGAGDMNFPNBLW/KBFR	5CB0N67647	N

Table 5. Parts list—Overall (continued)

No.	FRU	FRU no.	CRU ID.
2	UpperCaseC80X8YOGAGDMNFPNBLW/KBGR	5CB0N67456	N
2	UpperCaseC80X8YOGAGDMNFPNBLW/KBBZ	5CB0N67519	N
2	UpperCaseC80X8YOGAGDMNFPNBLW/KBNL	5CB0N67422	N
2	UpperCaseC80X8YOGAGDMNFPNBLW/KBHG	5CB0N67660	N
2	UpperCaseC80X8YOGAGDMNFPNBLW/KBBE	5CB0N67611	N
2	Upper CaseC80X8YGGDMNFPNBLW/KBICE	5CB0N67725	N
2	UpperCaseC80X8YOGAGDMNFPNBLW/KBSA	5CB0N67580	N
2	UpperCaseC80X8YOGAGDMNFPNBLW/KBSW	5CB0N67558	N
2	UpperCaseC80X8YOGAGDMNFPNBLW/KBBU	5CB0N67716	N
2	Upper CaseC80X8GDMNFPNBLW/KBCZ-SK	5CB0N67380	N
2	Upper CaseC80X8GDMNFPNBLW/KBFR-AR	5CB0N67541	N
2	Upper CaseC80X8YGGDMNFPNBLW/KBUKR	5CB0N67319	N
2	Upper CaseC80X8YOGAGDMNFPBLW/KBUS	5CB0N67664	N
2	Upper CaseC80X8YOGAGDMNFPBLW/KBGK	5CB0N67640	N
2	UpperCaseC80X8GDMNFPBLW/KBUSINT'E	5CB0N67675	N
2	Upper CaseC80X8YOGAGDMNFPBLW/KBKO	5CB0N67757	N
2	Upper CaseC80X8YOGAGDMNFPBLW/KBCH	5CB0N67777	N
2	Upper CaseC80X8YOGAGDMNFPBLW/KBRU	5CB0N67635	N
2	Upper CaseC80X8YGGDMNFPBLW/KBAR-E	5CB0N67591	N
2	Upper CaseC80X8YOGAGDMNFPBLW/KBHB	5CB0N67329	N
2	Upper CaseC80X8YOGAGDMNFPBLW/KBTI	5CB0N67641	N
2	UpperCaseC80X8YGGDMNFPBLW/KBINDIA	5CB0N67375	N
2	Upper CaseC80X8YOGAGDMNFPBLW/KBUK	5CB0N67642	N
2	Upper CaseC80X8YOGAGDMNFPBLW/KBIT	5CB0N67648	N
2	Upper CaseC80X8YOGAGDMNFPBLW/KBSP	5CB0N67781	N
2	Upper CaseC80X8YOGAGDMNFPBLW/KBTR	5CB0N67539	N
2	Upper CaseC80X8YOGAGDMNFPBLW/KBPO	5CB0N67378	N
2	Upper CaseC80X8YOGAGDMNFPBLW/KBLA	5CB0N67587	N
2	Upper CaseC80X8YGGDMNFPBLW/KBCF-E	5CB0N67536	N
2	Upper CaseC80X8YOGAGDMNFPBLW/KBND	5CB0N67438	N
2	Upper CaseC80X8YOGAGDMNFPBLW/KBFR	5CB0N67583	N
2	Upper CaseC80X8YOGAGDMNFPBLW/KBGR	5CB0N67535	N
2	Upper CaseC80X8YOGAGDMNFPBLW/KBBZ	5CB0N67774	N
2	Upper CaseC80X8YOGAGDMNFPBLW/KBNL	5CB0N67756	N
2	Upper CaseC80X8YOGAGDMNFPBLW/KBHG	5CB0N67613	N
2	Upper CaseC80X8YOGAGDMNFPBLW/KBBE	5CB0N67432	N
2	UpperCaseC80X8YOGAGDMNFPBLW/KBICE	5CB0N67602	N
2	Upper CaseC80X8YOGAGDMNFPBLW/KBSA	5CB0N67569	N
2	Upper CaseC80X8YOGAGDMNFPBLW/KBSW	5CB0N67326	N
2	Upper CaseC80X8YOGAGDMNFPBLW/KBBU	5CB0N67411	N
2	UpperCaseC80X8YGGDMNFPBLW/KBCZ-SK	5CB0N67335	N
2	UpperCaseC80X8YGGDMNFPBLW/KBFR-AR	5CB0N67534	N
2	UpperCaseC80X8YOGAGDMNFPBLW/KBUKR	5CB0N67451	N
2	UpperCaseC80X8YOGAGDMNFPBLW/KBUSA	5CB0N67677	N
3	MB C 80X8 NOK 4415U UMA NFPNBL	5B20N67507	N
3	MB C 80X8 WIN 4415U UMA NFPNBL	5B20N67710	N
3	MB C 80X8 NOK 4415U UMA FP NBL	5B20N67733	N
3	MB C 80X8 WIN 4415U UMA FP NBL	5B20N67753	N

Table 5. Parts list—Overall (continued)

No.	FRU	FRU no.	CRU ID.
3	MB C 80X8 NOK 4415U UMA NFP BL	5B20N67548	N
3	MB C 80X8 WIN 4415U UMA NFP BL	5B20N67453	N
3	MB C 80X8 NOK 4415U UMA FP BL	5B20N67610	N
3	MB C 80X8 WIN 4415U UMA FP BL	5B20N67489	N
3	MBC80X8NOK4415UN16SGTR2GNFPNBL	5B20N67561	N
3	MBC80X8WIN4415UN16SGTR2GNFPNBL	5B20N67697	N
3	MB C80X8NOK4415UN16SGTR2GFPNBL	5B20N67582	N
3	MB C80X8WIN4415UN16SGTR2GFPNBL	5B20N67413	N
3	MB C80X8NOK4415UN16SGTR2GNFPBL	5B20N67731	N
3	MB C80X8WIN4415UN16SGTR2GNFPBL	5B20N67668	N
3	MB C 80X8NOK4415UN16SGTR2GFPBL	5B20N67627	N
3	MB C 80X8WIN4415UN16SGTR2GFPBL	5B20N67369	N
3	MB C 80X8 NOKI37100UHUMANFPNBL	5B20N67702	N
3	MB C 80X8 WINI37100UHUMANFPNBL	5B20N67680	N
3	MB C 80X8 NOK I37100UHUMAFPBL	5B20N67353	N
3	MB C 80X8 WIN I37100UHUMAFPBL	5B20N67428	N
3	MB C 80X8 NOK I37100UHUMANFPBL	5B20N67782	N
3	MB C 80X8 WIN I37100UHUMANFPBL	5B20N67758	N
3	MB C 80X8 NOK I37100UH UMAFPBL	5B20N67491	N
3	MB C 80X8 WIN I37100UH UMAFPBL	5B20N67384	N
3	MBC80X8NOKI37100UHN16SGTRNFPNBL	5B20N67338	N
3	MBC80X8WINI37100UHN16SGTRNFPNBL	5B20N67656	N
3	MBC80X8NOKI37100UHN16SGTRFPNBL	5B20N67705	N
3	MBC80X8WINI37100UHN16SGTRFPNBL	5B20N67771	N
3	MBC80X8NOKI37100UHN16SGTRNFPBL	5B20N67385	N
3	MBC80X8WINI37100UHN16SGTRNFPBL	5B20N67399	N
3	MBC80X8NOKI37100UHN16SGTR2GFPBL	5B20N67390	N
3	MBC80X8WINI37100UHN16SGTR2GFPBL	5B20N67776	N
3	MB C 80X8 NOKI57200UHUMANFPNBL	5B20N67484	N
3	MB C 80X8 WINI57200UHUMANFPNBL	5B20N67560	N
3	MB C 80X8 NOK I57200UHUMAFPBL	5B20N67769	N
3	MB C 80X8 WIN I57200UHUMAFPBL	5B20N67747	N
3	MB C 80X8 NOK I57200UHUMANFPBL	5B20N67678	N
3	MB C 80X8 WIN I57200UHUMANFPBL	5B20N67638	N
3	MB C 80X8 NOK I57200UH UMAFPBL	5B20N67317	N
3	MB C 80X8 WIN I57200UH UMAFPBL	5B20N67526	N
3	MBC80X8NOKI57200UHN16SGTRNFPNBL	5B20N67471	N
3	MBC80X8WINI57200UHN16SGTRNFPNBL	5B20N67358	N
3	MBC80X8NOKI57200UHN16SGTRFPNBL	5B20N67590	N
3	MBC80X8WINI57200UHN16SGTRFPNBL	5B20N67368	N
3	MBC80X8NOKI57200UHN16SGTRNFPBL	5B20N67573	N
3	MBC80X8WINI57200UHN16SGTRNFPBL	5B20N67566	N
3	MBC80X8NOKI57200UHN16SGTR2GFPBL	5B20N67434	N
3	MBC80X8WINI57200UHN16SGTR2GFPBL	5B20N67503	N
3	MB C 80X8 NOKI77500UHUMANFPNBL	5B20N67578	N
3	MB C 80X8 WINI77500UHUMANFPNBL	5B20N67462	N
3	MB C 80X8 NOK I77500UHUMAFPBL	5B20N67565	N
3	MB C 80X8 WIN I77500UHUMAFPBL	5B20N67410	N

Table 5. Parts list—Overall (continued)

No.	FRU	FRU no.	CRU ID.
3	MB C 80X8 NOK I77500UHUMANFPBL	5B20N67666	N
3	MB C 80X8 WIN I77500UHUMANFPBL	5B20N67325	N
3	MB C 80X8 NOK I77500UH UMAFPBL	5B20N67518	N
3	MB C 80X8 WIN I77500UH UMAFPBL	5B20N67700	N
3	MBC80X8NOKI77500UHN16SGTRNFPNBL	5B20N67667	N
3	MBC80X8WINI77500UHN16SGTRNFPNBL	5B20N67766	N
3	MBC80X8NOKI77500UHN16SGTRFPNBL	5B20N67739	N
3	MBC80X8WINI77500UHN16SGTRFPNBL	5B20N67361	N
3	MBC80X8NOKI77500UHN16SGTRNFPBL	5B20N67429	N
3	MBC80X8WINI77500UHN16SGTRNFPBL	5B20N67321	N
3	MBC80X8NOKI77500UHN16SGTR2GFPBL	5B20N67712	N
3	MBC80X8WINI77500UHN16SGTR2GFPBL	5B20N67622	N
4			N
5	RTC Battery C 80X8	5B10N67538	N
6	IO Board C 80X8 W/cable	5C50N67487	N
7	Fan C 80X8	5F10N67388	N
8	Heatsink C 80X8 UMA	5H40N67528	N
8	Heatsink C 80X8 DIS	5H40N67616	N
9			N
10			N
11			N
12			N
13			N
14	Lower Case C 80X8 Onyx Black	5CB0N67363	N
14	Lower Case C 80X8 Mineral Grey	5CB0N67572	N
14	Lower Case C 80X8 Gold Metallic	5CB0N67629	N
—	AC adapter (see “AC adapters” on page 79).		

LCD FRUs

In Lenovo ideapad 2in1 14, there are following types of LCDs.

- “14.0-in. HD/FHD LED”

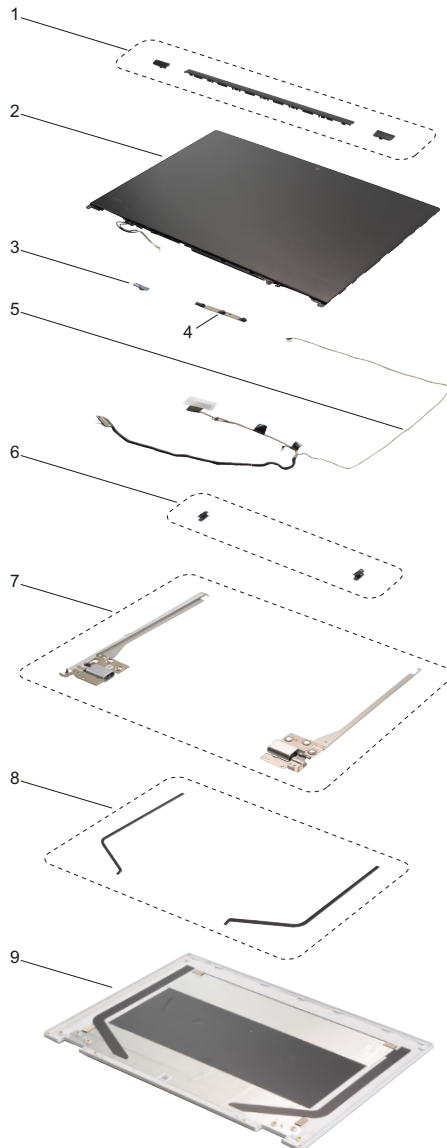


Table 6. Parts list—LCD FRUs

No.	FRU	FRU no.	CRU ID.
1	Hinge Cover C 80X8 M	5CB0N67749	N
1	Hinge Cover C 80X8 L	5CB0N67470	N
1	Hinge Cover C 80X8 R	5CB0N67722	N
2			
2			
3	Sensor Board C 80X8	5C50N67555	N
4	Camera C 80X8 720P	5C20N67564	N
5	EDP Cable C 80X8	5C10N67449	N
6	Rubber Hinge C 80X8	5R60N67768	N
7	Hinge C 80X8 R+L Onyx Black	5H50N67542	N
7	Hinge C 80X8 R+L Mineral Grey	5H50N69918	N
7	Hinge C 80X8 R+L Gold Metallic	5H50N69921	N
8	Removable Tape C 80X8	5T10N67431	N
9	LCD Cover C 80X8 BLK W/Yoga LOGO	5CB0N67386	N
9	LCD Cover C 80X8 GREY W/Yoga LOGO	5CB0N67395	N
9	LCD Cover C 80X8 GLD W/Yoga LOGO	5CB0N67464	N

Miscellaneous parts

Table 7. Parts list—Miscellaneous parts

FRU	P/N	CRU ID.
System miscellaneous parts:		
• (a) WLAN Sponge C 80X8	5T10N67374	N
• (b) Dimm Emi Shielding C 80X8	5S60N67563	N
• (c) HDD Bracket C 80X8	5B40N67466	N
• (d) Foot Rubber C 80X8 Onyx Black	5F40N67330	N
• (d) Foot Rubber C 80X8 Mineral Grey	5F40N69919	N
• (d) Foot Rubber C 80X8 Gold Metallic	5F40N69920	N
Cable miscellaneous parts:		
• (e) DC-IN Cable C 80X8	5C10N67714	N
Note: Italicized letters in parentheses are references to the exploded view in “Overall” on page 66.		

Notices

Lenovo may not offer the products, services, or features discussed in this document in all countries. Consult your local Lenovo representative for information on the products and services currently available in your area. Any reference to a Lenovo product, program, or service is not intended to state or imply that only that Lenovo product, program, or service may be used. Any functionally equivalent product, program, or service that does not infringe any Lenovo intellectual property right may be used instead. However, it is the user's responsibility to evaluate and verify the operation of any other product, program, or service.

Lenovo may have patents or pending patent applications covering subject matter described in this document. The furnishing of this document does not give you any license to these patents.

LENOVO GROUP LTD. PROVIDES THIS PUBLICATION "AS IS" WITHOUT WARRANTY OF ANY KIND, EITHER EXPRESS OR IMPLIED, INCLUDING, BUT NOT LIMITED TO, THE IMPLIED WARRANTIES OF NON-INFRINGEMENT, MERCHANTABILITY OR FITNESS FOR A PARTICULAR PURPOSE. Some jurisdictions do not allow disclaimer of express or implied warranties in certain transactions, therefore, this statement may not apply to you.

This information could include technical inaccuracies or typographical errors. Changes are periodically made to the information herein; these changes will be incorporated in new editions of the publication. Lenovo may make improvements and/or changes in the product(s) and/or the program(s) described in this publication at any time without notice.

The products described in this document are not intended for use in implantation or other life support applications where malfunction may result in injury or death to persons. The information contained in this document does not affect or change Lenovo product specifications or warranties. Nothing in this document shall operate as an express or implied license or indemnity under the intellectual property rights of Lenovo or third parties. All information contained in this document was obtained in specific environments and is presented as an illustration. The result obtained in other operating environments may vary.

Lenovo may use or distribute any of the information you supply in any way it believes appropriate without incurring any obligation to you.

Any references in this publication to non-Lenovo Web sites are provided for convenience only and do not in any manner serve as an endorsement of those Web sites. The materials at those Web sites are not part of the materials for this Lenovo product, and use of those Web sites is at your own risk.

Any performance data contained herein was determined in a controlled environment. Therefore, the result obtained in other operating environments may vary significantly. Some measurements may have been made on development-level systems and there is no guarantee that these measurements will be the same on generally available systems. Furthermore, some measurements may have been estimated through extrapolation. Actual results may vary. Users of this document should verify the applicable data for their specific environment.

Trademarks

The following terms are either registered trademarks or trademarks of Lenovo in the United States and/or other countries:

Lenovo®

Lenovo logo®

The following term is trademark of Microsoft Corporation in the United States, other countries, or both:

Windows®

The following term is trademark of Intel Corporation or its subsidiaries in the United States, other countries, or both:

Intel®

Other company, product, or service names may be the trademarks or service marks of others.