



# Lenovo All-In-One 300 Computer Hardware Maintenance Manual

Machine Types: F0BC [AIO 300-23ACL/Energy Star] / F0BW [AIO 300-22ACL/Energy Star] F0BY [AIO 300-23ISU/Energy Star] / F0BX [AIO 300-22ISU/Energy Star] F0BV [AIO 300-20ISH/Energy Star]





# Lenovo All-In-One 300 Computer Hardware Maintenance Manual

Machine Types: F0BC [AIO 300-23ACL/Energy Star] / F0BW [AIO 300-22ACL/Energy Star] F0BY [AIO 300-23ISU/Energy Star] / F0BX [AIO 300-22ISU/Energy Star] F0BV [AIO 300-20ISH/Energy Star]

**Third Edition (June 2016)08th**

**© Copyright Lenovo 2015.**

LIMITED AND RESTRICTED RIGHTS NOTICE: If data or software are delivered pursuant a General Services Administration "GSA" contract, use, reproduction, or disclosure is subject to restrictions set forth in Contract No. GS-35F-05925

---

# Contents

<b>Chapter 1. About this manual . . . . .</b>	<b>1</b>	General information . . . . .	27
Important Safety Information . . . . .	1	Replacing the keyboard and mouse . . . . .	28
<b>Chapter 2. Safety information . . . . .</b>	<b>3</b>	Replacing the adapter . . . . .	28
General safety . . . . .	3	Removing the stand base . . . . .	29
Electrical safety . . . . .	3	Removing the foot cover . . . . .	30
Safety inspection guide . . . . .	5	Replacing the hard disk drive . . . . .	30
Handling electrostatic discharge-sensitive devices . . . . .	5	Replacing the optical drive . . . . .	31
Grounding requirements . . . . .	6	Removing the stand holder . . . . .	33
Safety notices . . . . .	6	Removing the rear cover . . . . .	34
<b>Chapter 3. General information . . . . .</b>	<b>9</b>	Removing the EMI cover . . . . .	37
Specifications . . . . .	9	Replacing the power switch board . . . . .	38
<b>Chapter 4. General Checkout . . . . .</b>	<b>11</b>	Replacing the converter board . . . . .	39
<b>Chapter 5. Using the Setup Utility. . . . .</b>	<b>13</b>	Replacing the memory module . . . . .	40
Starting the Lenovo BIOS Setup Utility program . . . . .	13	Replacing the system fan . . . . .	41
Viewing and changing settings . . . . .	13	Replacing the heat-sink . . . . .	42
Using passwords. . . . .	13	Replacing the speaker system . . . . .	43
Enabling or disabling a device . . . . .	15	Replacing the Wi-Fi card. . . . .	44
Selecting a startup device . . . . .	16	Replacing the motherboard. . . . .	45
Exiting the Lenovo BIOS Setup Utility program . . . . .	17	Replacing the camera . . . . .	47
<b>Chapter 6. Symptom-to-FRU Index . . . . .</b>	<b>19</b>	Replacing the LCD panel module . . . . .	48
Hard disk drive boot error . . . . .	19	Replacing the LCD panel module-None Touch . . . . .	52
Power Supply Problems . . . . .	19	<b>Chapter 9. FRU lists . . . . .</b>	<b>55</b>
POST error codes . . . . .	20	<b>Chapter 10. FRU lists . . . . .</b>	<b>63</b>
Undetermined problems . . . . .	20	<b>Chapter 11. FRU lists . . . . .</b>	<b>71</b>
<b>Chapter 7. Locating connectors, controls and components . . . . .</b>	<b>21</b>	<b>Chapter 12. FRU lists . . . . .</b>	<b>79</b>
<b>Chapter 8. Replacing hardware . . . . .</b>	<b>27</b>	<b>Chapter 13. General information . . . . .</b>	<b>87</b>
		Additional Service Information . . . . .	87



---

## Chapter 1. About this manual

This manual contains service and reference information for Lenovo All-In-One 300 computers listed on the cover. It is intended only for trained servicers who are familiar with Lenovo computer products.

Before servicing a Lenovo product, be sure to read the Safety Information.

The description of the TV-tuner card in this manual applies only to computers with a TV-tuner card installed. It does not apply to computers without a TV-tuner card.

---

### Important Safety Information

Be sure to read all CAUTION and DANGER sections in this manual before following any of the instructions.

Veillez lire toutes les consignes de type DANGER et ATTENTION du présent document avant d'exécuter les instructions.

Lesen Sie unbedingt alle Hinweise vom Typ "ACHTUNG" oder "VORSICHT" in dieser Dokumentation, bevor Sie irgendwelche Vorgänge durchführen

Leggere le istruzioni introdotte da ATTENZIONE e PERICOLO presenti nel manuale prima di eseguire una qualsiasi delle istruzioni

Certifique-se de ler todas as instruções de cuidado e perigo neste manual antes de executar qualquer uma das instruções

Es importante que lea todas las declaraciones de precaución y de peligro de este manual antes de seguir las instrucciones.

执行任何说明之前，请确保已阅读本书中的所有警告和危险声明。

執行任何指示前，請確實閱讀本書中的所有警告及危險聲明。



---

## Chapter 2. Safety information

This chapter contains the safety information that you need to be familiar with before servicing a computer.

---

### General safety

Follow these rules to ensure general safety:

- Keep the areas around the computer clear and clean during and after maintenance.
- When lifting any heavy object:
  1. Ensure you can stand safely without slipping.
  2. Distribute the weight of the object equally across both feet.
  3. Lift slowly. Never move suddenly or twist when you attempt to lift.
  4. Lift by standing or by pushing up with your leg muscles; this action removes the strain from the muscles in your back.  
*Do not attempt to lift any objects that weigh more than 16 kg (35 lb) or objects that you think are too heavy for you.*
- Do not perform any action that would create a hazard for the customer, or would make the computer unsafe.
- Before you start the computer, ensure that other service representatives and customer personnel are not in a position that would create a hazard for them.
- Place removed covers and other parts in a safe place, away from all personnel, while you are servicing the computer.
- Keep your tool case away from areas that people may walk through to ensure no-one trips over it.
- Do not wear loose clothing that can be trapped in the moving parts of a machine. Ensure that your sleeves are fastened or rolled up above your elbows. If your hair is long, tie or fasten it back.
- Insert the ends of your necktie or scarf inside clothing or fasten it with a non-conductive clip, approximately 8 centimeters (3 inches) from the end.
- Do not wear jewelry, chains, metal-frame eyeglasses, or metal fasteners for your clothing.  
**Remember:** Metal objects are good electrical conductors.
- Wear safety glasses when you are: hammering, drilling soldering, cutting wire, attaching springs, using solvents, or working in any other conditions that might be hazardous to your eyes.
- After service, reinstall all safety shields, guards, labels, and ground wires. Replace any safety device that is worn or defective.
- Reattach all covers correctly before returning the computer to the customer.

---

### Electrical safety



#### **CAUTION:**

**Electrical current from power, telephone, and communication cables can be hazardous. To avoid personal injury or equipment damage, disconnect any attached power cords, telecommunication cables, network cables, and modem cables before you open the computer covers, unless instructed otherwise in the installation and configuration procedures.**

Observe the following rules when working on electrical equipment.

**Important:** Use only approved tools and test equipment. Some hand tools have handles covered with a soft material that does not insulate you when working with live electrical currents. Many customers have rubber floor mats near their equipment that contain small conductive fibers to decrease electrostatic discharge.

- Find the room emergency power-off (EPO) switch, disconnecting switch, or electrical outlet. If an electrical accident occurs, you can then operate the switch or unplug the power cord quickly.
- Do not work alone under hazardous conditions or near equipment that has hazardous voltages.
- Disconnect all power before:
  - Performing a mechanical inspection
  - Working near power supplies
  - Removing or installing Field Replaceable Units (FRUs)
- Before you start to work on the computer, unplug the power cord. If you cannot unplug it, ask the customer to power-off the electrical outlet that supplies power to the machine and to lock the electrical outlet in the off position.
- If you need to work on a computer that has exposed electrical circuits, observe the following precautions:
  - Ensure that another person, familiar with the power-off controls, is near you.  
**Remember:** Another person must be there to switch off the power, if necessary.
  - Use only one hand when working with powered-on electrical equipment; keep the other hand in your pocket or behind your back.  
**Remember:** There must be a complete circuit to cause electrical shock. By observing the above rule, you may prevent a current from passing through your body.
  - When using a tester, set the controls correctly and use the approved probe leads and accessories for that tester.
  - Stand on suitable rubber mats (obtained locally, if necessary) to insulate you from grounds such as metal floor strips and machine frames.

Observe the special safety precautions when you work with very high voltages; these instructions are in the safety sections of the maintenance information. Use extreme care when measuring high voltages.

- Regularly inspect and maintain your electrical hand tools to ensure they are safe to use.
- Do not use worn or broken tools and testers.
- *Never assume* that power has been disconnected from a circuit. First, *check* that it has been powered off.
- Always look carefully for possible hazards in your work area. Examples of these hazards are wet floors, non-grounded power extension cables, conditions that may cause or allow power surges, and missing safety grounds.
- Do not touch live electrical circuits with the reflective surface of a plastic dental mirror. This surface is conductive, and touching a live circuit can cause personal injury and damage to the computer.
- Do not service the following parts with the power on when they are removed from their normal operating positions in a computer:
  - Power supply units
  - Pumps
  - Blowers and fans
  - Motor generatorsand similar units. (This practice ensures correct grounding of the units.)
- If an electrical accident occurs:
  - Use caution; do not become a victim yourself.

- Switch off power.
- Send another person to get medical aid.

---

## Safety inspection guide

The intent of this inspection guide is to assist you in identifying potential hazards posed by these products. Each computer, as it was designed and built, had required safety items installed to protect users and service personnel from injury. This guide addresses only those items. However, good judgment should be used to identify potential safety hazards due to attachment of features or options not covered by this inspection guide.

If any hazards are present, you must determine how serious the apparent hazard could be and whether you can continue without first resolving the problem.

Consider the following items and the safety hazards they present:

- Electrical hazards, especially primary power (primary voltage on the frame can cause serious or fatal electrical shock).
- Explosive hazards, such as a damaged CRT face or bulging capacitor
- Mechanical hazards, such as loose or missing hardware

The guide consists of a series of steps presented as a checklist. Begin the checks with the power off, and the power cord disconnected.

Checklist:

1. Check exterior covers for damage (loose, broken, or sharp edges).
2. Power-off the computer. Disconnect the power cord.
3. Check the power cord for:
  - a. A third-wire ground connector in good condition. Use a meter to measure third-wire ground continuity for 0.1 ohm or less between the external ground pin and frame ground.
  - b. The power cord should be the appropriate type as specified in the parts listings.
  - c. Insulation must not be frayed or worn.
4. Remove the cover.
5. Check for any obvious alterations. Use good judgment as to the safety of any alterations.
6. Check inside the unit for any obvious hazards, such as metal filings, contamination, water or other liquids, or signs of fire or smoke damage.
7. Check for worn, frayed, or pinched cables.
8. Check that the power-supply cover fasteners (screws or rivets) have not been removed or tampered with.

---

## Handling electrostatic discharge-sensitive devices

Any computer part containing transistors or integrated circuits (ICs) should be considered sensitive to electrostatic discharge (ESD). ESD damage can occur when there is a difference in charge between objects. Protect against ESD damage by equalizing the charge so that the computer, the part, the work mat, and the person handling the part are all at the same charge.

**Notes:**

1. Use product-specific ESD procedures when they exceed the requirements noted here.
2. Make sure that the ESD protective devices you use have been certified (ISO 9000) as fully effective.

When handling ESD-sensitive parts:

- Keep the parts in protective packages until they are inserted into the product.
- Avoid contact with other people while handling the part.
- Wear a grounded wrist strap against your skin to eliminate static on your body.
- Prevent the part from touching your clothing. Most clothing is insulative and retains a charge even when you are wearing a wrist strap.
- Use the black side of a grounded work mat to provide a static-free work surface. The mat is especially useful when handling ESD-sensitive devices.
- Select a grounding system, such as those listed below, to provide protection that meets the specific service requirement.

**Note:** The use of a grounding system is desirable but not required to protect against ESD damage.

- Attach the ESD ground clip to any frame ground, ground braid, or green-wire ground.
- Use an ESD common ground or reference point when working on a double-insulated or battery-operated system. You can use coax or connector-outside shells on these systems.
- Use the round ground-prong of the AC plug on AC-operated computers.

---

## Grounding requirements

Electrical grounding of the computer is required for operator safety and correct system function. Proper grounding of the electrical outlet can be verified by a certified electrician.

---

## Safety notices

The CAUTION and DANGER safety notices in this section are provided in the language of English.



### DANGER

Electrical current from power, telephone and communication cables is hazardous.

#### To avoid a shock hazard:

- **Do not connect or disconnect any cables or perform installation, maintenance, or reconfiguration of this product during an electrical storm.**
- **Connect all power cords to a properly wired and grounded electrical outlet.**
- **Connect any equipment that will be attached to this product to a properly wired outlet.**
- **When possible, use one hand only to connect or disconnect signal cables.**
- **Never turn on any equipment when there is evidence of fire, water, or structural damage.**
- **Disconnect the attached power cords, telecommunications cables, network cables, and modem cables before you open the device covers, unless instructed otherwise in the installation and configuration procedures.**
- **Connect and disconnect cables as described in the following table when installing, moving, or opening covers on this product or attached devices.**

To Connect	To Disconnect
<ol style="list-style-type: none"> <li>1. Turn everything OFF.</li> <li>2. First, attach all cables to devices.</li> <li>3. Attach signal cables to connectors.</li> <li>4. Attach power cords to outlet.</li> <li>5. Turn device ON.</li> </ol>	<ol style="list-style-type: none"> <li>1. Turn everything OFF.</li> <li>2. First, remove power cords from outlets.</li> <li>3. Remove signal cables from connectors.</li> <li>4. Remove all cables from devices.</li> </ol>



**CAUTION:**

When replacing the lithium battery, use only Part Number 45C1566 or an equivalent type battery recommended by the manufacturer. If your system has a module containing a lithium battery, replace it only with the same module type made by the same manufacturer. The battery contains lithium and can explode if not properly used, handled, or disposed of.

*Do not:*

- Throw into or immerse in water
- Heat to more than 100°C (212°F)
- Repair or disassemble

Dispose of the battery as required by local ordinances or regulations.



**CAUTION:**

When laser products (such as CD-ROMs, DVD-ROM drives, fiber optic devices, or transmitters) are installed, note the following:

- Do not remove the covers. Removing the covers of the laser product could result in exposure to hazardous laser radiation. There are no serviceable parts inside the device.
- Use of controls or adjustments or performance of procedures other than those specified herein might result in hazardous radiation exposure.






 **DANGER**

Some laser products contain an embedded Class 3A or Class 3B laser diode. Note the following:

These diodes emit radiation when open. Do not stare into the beam, do not view directly with optical instruments, and avoid direct exposure to the beam.

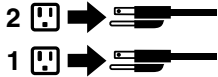


		
≥18 kg (37 lbs)	≥32 kg (70.5 lbs)	≥55 kg (121.2 lbs)

**CAUTION:**  
Use safe practices when lifting.



**CAUTION:**  
The power control button on the device and the power switch on the power supply do not turn off the electrical current supplied to the device. The device also might have more than one power cord. To remove all electrical current from the device, ensure that all power cords are disconnected from the power source.



**CAUTION:**  
Do not place any object weighing more than 82 kg (180 lbs.) on top of rack-mounted devices.



---

## Chapter 3. General information

This chapter provides general information that applies to all computer models covered by this manual.

---

### Specifications

This section lists the physical specifications for your computer.

**This section lists the physical specifications for your computer.**

#### Type Lenovo All-In-One 300

This section lists the physical specifications.

##### Environment

Air temperature:

Operating: 10° to 35°C

Transit: -20° to 55°C

Humidity:

Operating: 35% to 80%

Transit: 20% to 90% (40°C)

Altitude: 86KPa to 106KPa

Electrical input:

Input voltage: 90V-264V(AC)

Input frequency: 47Hz-63Hz



---

## Chapter 4. General Checkout

**Attention:** The drives in the computer you are servicing might have been rearranged or the drive startup sequence may have been changed. Be extremely careful during write operations such as copying, saving, or formatting. Data or programs can be overwritten if you select an incorrect drive.

General error messages appear if a problem or conflict is found by an application, the operating system, or both. For an explanation of these messages, refer to the information supplied with that software package.

Use the following procedure to help determine the cause of the problem:

1. Power-off the computer and all external devices.
2. Check all cables and power cords.
3. Set all display controls to the middle position.
4. Power-on all external devices.
5. Power-on the computer.
  - Look for displayed error codes.
  - Look for readable instructions or a main menu on the display.

If you did not receive the correct response, proceed to step 6.

If you did receive the correct response, proceed to step 7.

6. If one of the following happens, follow the instruction given:
  - If the computer displays a POST error, go to “POST error codes”.
  - If the computer hangs and no error is displayed, continue at step 7.
7. If the test stops and you cannot continue, replace the last device tested.



---

## Chapter 5. Using the Setup Utility

The Setup Utility program is used to view and change the configuration settings of your computer, regardless of which operating system you are using. However, the operating system settings might override any similar settings in the Setup Utility program.

---

### Starting the Lenovo BIOS Setup Utility program

To start the Lenovo BIOS Setup Utility program, do the following:

1. If your computer is already on when you start this procedure, shut down the operating system and turn off the computer.
2. Press and hold the **F1** key then turn on the computer. When the Lenovo BIOS Setup Utility program is displayed, release the **F1** key.

**Note:** If a Power-On Password or an Administrator Password has been set, the Setup Utility program menu will not be displayed until you type your password. For more information, see “Using passwords.”

---

### Viewing and changing settings

System configuration options are listed in the Lenovo BIOS Setup Utility program menu. To view or change settings, see “Starting the Setup Utility program.”

You must use the keyboard when using the Lenovo BIOS Setup Utility menu. The keys used to perform various tasks are displayed on the bottom of each screen.

---

### Using passwords

You can use the Lenovo BIOS Setup Utility program to set passwords to prevent unauthorized persons from gaining access to your computer and data. See “Starting the Setup Utility program.” The following types of passwords are available:

- Administrator Password
- Power-On Password

You do not have to set any passwords to use your computer. However, if you decide to set passwords, read the following sections.

#### Password considerations

A password can be any combination of letters and numbers up to 16 characters (a-z and 0-9). For security reasons, it is a good idea to use a strong password that cannot be easily compromised. We suggest that passwords should follow these rules:

- For a strong password, use 7-16 characters and a mix of letters and numbers.
- Do not use your name or your user name.
- Do not use a common word or a common name.
- Use something significantly different from your previous password.

**Attention:** Administrator and Power-On passwords are not case sensitive.

## Administrator Password

Setting an Administrator Password deters unauthorized persons from changing configuration settings. You might want to set an Administrator Password if you are responsible for maintaining the settings of several computers.

After you set an Administrator Password, a password prompt is displayed every time you access the Lenovo BIOS Setup Utility program.

If both the Administrator and Power-On Password are set, you can type either password. However, you must use your Administrator Password to change any configuration settings.

### Setting, changing, or deleting an Administrator password

To set an Administrator Password, do the following:

**Note:** A password can be any combination of letters and numbers up to 16 characters (a-z and 0-9). For more information, see “Password considerations” on page 13.

1. Start the Lenovo BIOS Setup Utility program (see “Starting the Lenovo BIOS Setup Utility program” on page 13).
2. From the **Security** menu, select **Set Administrator Password** and press the **Enter** key.
3. The password dialog box will be displayed. Type the password then press the **Enter** key.
4. Re-type the password to confirm, then press the **Enter** key. If you typed the password correctly, the password will be installed.

To change an Administrator Password, do the following:

1. Start the Lenovo BIOS Setup Utility program (see “Starting the Lenovo BIOS Setup Utility program” on page 13).
2. From the **Security** menu, select **Set Administrator Password** and press the **Enter** key.
3. The password dialog box will be displayed. Type the current password then press the **Enter** key.
4. Type the new password, then press the **Enter** key. Re-type the password to confirm the new password. If you typed the new password correctly, the new password will be installed. A Setup Noticed confirming that changes have been saved will be displayed.

To delete a previously set Administrator Password, do the following :

1. From the **Security** menu, select **Set Administrator Password** and press the **Enter** key.
2. The password dialog box will be displayed. Type the current password and press the **Enter** key.
3. To delete an **Administrator Password**, leave each new password line item blank, then press the **Enter** key. A Setup Notice confirming that changes have been saved will be displayed.
4. Return to the Lenovo BIOS Setup Utility program menu and select the **Exit** option.
5. Select **Save changes and Exit** from the menu.

## Power-On Password

When a Power-On Password is set, you cannot start the Lenovo BIOS Setup Utility program until a valid password is typed from the keyboard.

### Setting, changing, or deleting a Power-On Password

**Note:** A password can be any combination of letters and numbers up to 16 characters (a-z and 0-9).

To set a Power-On Password, do the following:

1. Start the Lenovo BIOS Setup Utility program (See "Starting the Lenovo BIOS Setup Utility program" on page 13.)
2. From the **Security** menu, select **Set Power-On Password** and press the **Enter** key.
3. The password dialog box will be displayed. Type the password, then press the **Enter** key.
4. Re-type the password to confirm. If you typed the password correctly, the password will be installed.

To change a Power-On Password, do the following:

1. Start the Lenovo BIOS Setup Utility program (See "Starting the Lenovo BIOS Setup Utility program" on page 13.)
2. From the **Security** menu, select **Set Power-On Password** and press the **Enter** key.
3. The password dialog box will be displayed. Type the current password then press the **Enter** key.
4. Type the new password, then press the **Enter** key. Re-type the password to confirm the new password. If you typed the new password correctly, the new password will be installed. A Setup Noticed confirming that changes have been saved will be displayed.

To delete a previously set Power-On Password, do the following :

1. From the **Security** menu, select **Set Power-On Password** and press the **Enter** key.
2. The password dialog box will be displayed. Type the current password and press the **Enter** key.
3. To delete the **Power-On Password**, leave each new password line item blank, then press Enter. A Setup Notice confirming that changes have been saved will be displayed.
4. Return to the Lenovo BIOS Setup Utility program menu and select the **Exit** option.
5. Select **Save changes and Exit** from the menu.

---

## Enabling or disabling a device

The <b>Devices</b> options is used to enable or disable user access to the following devices:	
<b>USB Functions</b>	Select whether to enable or disable <b>USB</b> (Universal Serial Bus) functions. If the functions are disabled, no <b>USB</b> devices can be used.
<b>SATA Mode</b>	When this feature is set to <b>Disabled</b> , all devices connected to the SATA connectors (e.g. hard disk drives or the optical disk drive) are disabled and cannot be accessed.
<b>Onboard Audio Controller</b>	Select whether to enable or disable the <b>Onboard Audio Controller</b> . When this feature is set to <b>Disabled</b> all devices connected to the audio connectors (e.g. headphones or a microphone) are disabled and cannot be used.
<b>Onboard Ethernet Controller or LAN Boot Agent</b>	Select whether to enable or disable the <b>Onboard Ethernet Controller</b> , or select whether to enable or disable load onboard <b>PXE (Preboot Execution Environment)</b> .

To enable or disable a device, do the following:

1. Start the Setup Utility program (see "Starting the Setup Utility program" on page 13).
2. From the Setup Utility program menu, select **Devices**.
3. Select an option as follows:

Select **USB Setup**, press the **Enter** key, then select **USB Functions**.

Select **ATA Device Setup**, press the **Enter** key, then select **SATA Mode**.

Select **Audio Setup**, press the **Enter** key, then select **Onboard Audio Controller**.

Select **Network Setup**, press the **Enter** key, then select **Onboard Ethernet Support** or **LAN Boot Agent**.

4. Select **Disabled** or **Enabled** and press the **Enter** key.
5. Return to the Lenovo BIOS Setup Utility program menu and select the **Exit** option.
6. Select **Save changes and Exit** from the menu.

**Notes:**

- a. If you do not want to save the settings, select **Discard changes and Exit** from the menu.
- b. Select IDE/AHCI Mode: Device driver support is required for AHCI. Depending on how the hard disk image was installed, changing this setting may prevent the system from booting.

---

## Selecting a startup device

If your computer does not boot from a device such as the CD/DVD-ROM drive disk or hard disk as expected, follow one of the procedures below.

### Selecting a temporary startup device

Use this procedure to start up from any boot device.

**Note:** Not all CDs, DVDs or hard disk drives are bootable.

1. Turn off your computer.
2. Press and hold the **F12** key then turn on the computer. When the **Startup Device Menu** appears, release the **F12** key.

**Note:** If the **Startup Device Menu** does not display using these steps, repeatedly press and release the **F12** key rather than keeping it pressed when turning on the computer.

3. Use **↑** and **↓** arrows to select the desired startup device from the **Startup Device Menu** and press the **Enter** key to begin.

**Note:** Selecting a startup device from the **Startup Device Menu** does not permanently change the startup sequence.

### Selecting or changing the startup device sequence

To view or permanently change the configured startup device sequence, do the following:

1. Start the Lenovo BIOS Setup Utility program (see “Starting the Lenovo BIOS Setup Utility program” on page 13).
2. From the Lenovo BIOS Setup Utility program main menu, select the **Startup** option.
3. Press the **Enter** key, and select the devices for the **Primary Boot Sequence**. Read the information displayed on the right side of the screen.
4. Use **-** and **^** arrows to select a device. Use the **<+>** or **<->** keys to move a device up or down. Use the **<x>** key to exclude the device from or include the device in the boot sequence.
5. Return to the Lenovo BIOS Setup Utility program menu and select the **Exit** option.
6. Select **Save changes and Exit** from the menu.

**Notes:**

- a. If you do not want to save the settings, select **Discard changes and Exit** from the menu.
- b. If you have changed these settings and want to return to the default settings, select **Load Optimal Defaults** from the menu.

---

## Exiting the Lenovo BIOS Setup Utility program

After you finish viewing or changing settings, press the **Esc** key to return to the Lenovo BIOS Setup Utility program main menu. You might have to press the **Esc** key several times. Do one of the following:

- If you want to save the new settings, select **Save changes and Exit** from the menu. When the **Save & reset** window shows, select the **Yes** button, and then press the **Enter** key to exit the Lenovo BIOS Setup Utility program.
- If you do not want to save the settings, select **Discard changes and Exit** from the menu. When the **Reset Without Saving** window shows, select the **Yes** button, and then press the **Enter** key to exit the Lenovo BIOS Setup Utility program.



---

## Chapter 6. Symptom-to-FRU Index

The Symptom-to-FRU index lists error symptoms and possible causes. The most likely cause is listed first. Always begin with Chapter 4, “General Checkout,” on page 11. This index can also be used to help you decide which FRUs to have available when servicing a computer. If you are unable to correct the problem using this index, go to “Undetermined problems” on page 20.

### Notes:

- If you have both an error message and an incorrect audio response, diagnose the error message first.
- If you cannot run the diagnostic tests or you get a diagnostic error code when running a test but did receive a POST error message, diagnose the POST error message first.
- If you did not receive any error message look for a description of your error symptoms in the first part of this index.

---

### Hard disk drive boot error

A hard disk drive boot error can be caused by the following.

Error	FRU/Action
The startup drive is not included in the boot sequence configuration.	Check the configuration and ensure the startup drive is in the boot sequence.
No operating system is installed on the boot drive.	Install an operating system on the boot drive.
The boot sector on the startup drive is corrupted.	The drive must be formatted. Do the following: <ol style="list-style-type: none"><li>1. Attempt to back up the data on the failing hard disk drive.</li><li>2. Use the operating system to format the hard disk drive.</li></ol>
The drive is defective.	Replace the hard disk drive.

---

### Power Supply Problems

Follow these procedures if you suspect there is a power supply problem.

Check/Verify	FRU/Action
Check that the following are properly installed: <ul style="list-style-type: none"><li>• Power Cord</li><li>• On/Off Switch connector</li><li>• System Board Power Supply connectors</li><li>• Microprocessor connections</li></ul>	Reseat connectors
Check the power cord.	Power Cord
Check the power-on switch.	Power-on Switch

---

## POST error codes

Each time you turn the computer on, it performs a series of tests to check that the system is operating correctly and that certain options are set. This series of tests is called the *Power-On Self-Test*, or *POST*. POST does the following:

- Checks some basic motherboard operations
- Checks that the memory is working correctly
- Starts video operations
- Verifies that the boot drive is working

POST Error Message	Description/Action
Keyboard error	Cannot initialize the keyboard. Make sure the keyboard is properly connected to the computer and that no keys are held pressed during POST. To purposely configure the computer without a keyboard, select <b>Keyboardless operation</b> in <b>Startup</b> and set the option to <b>Enabled</b> . The BIOS then ignores the missing keyboard during POST.
Reboot and Select proper Boot device or Insert Boot Media in selected Boot device	The BIOS was unable to find a suitable boot device. Make sure the boot drive is properly connected to the computer. Make sure you have bootable media in the boot device.

---

## Undetermined problems

1. Power-off the computer.
2. Remove or disconnect the following components (if connected or installed) one at a time.
  - a. External devices (modem, printer, or mouse)
  - b. Extended video memory
  - c. External Cache
  - d. External Cache RAM
  - e. Hard disk drive
  - f. Disk drive
3. Power-on the computer to re-test the system.
4. Repeat steps 1 through 3 until you find the failing device or component.

If all devices and components have been removed and the problem continues, replace the system board.

---

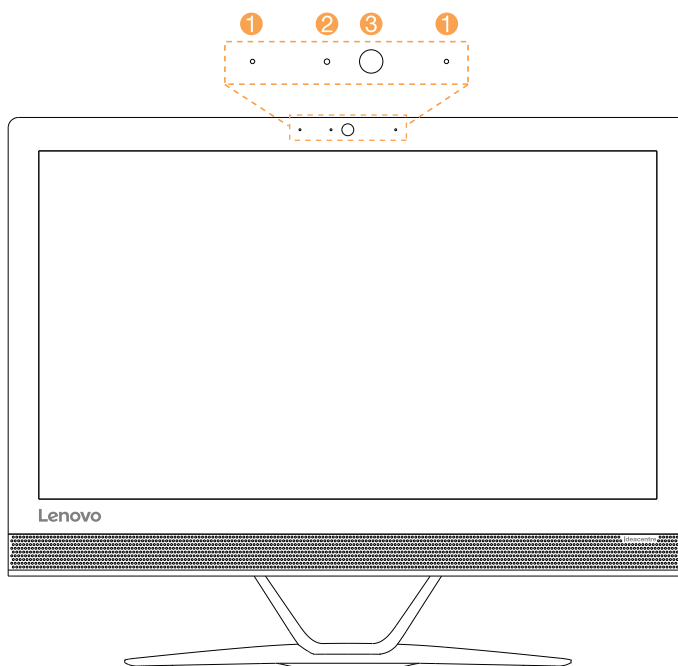
## Chapter 7. Locating connectors, controls and components

This section provides illustrations to help locate the various connectors, controls and components of the computer.

### Front view

The following illustration shows the location of controls and components on the front of the computer.

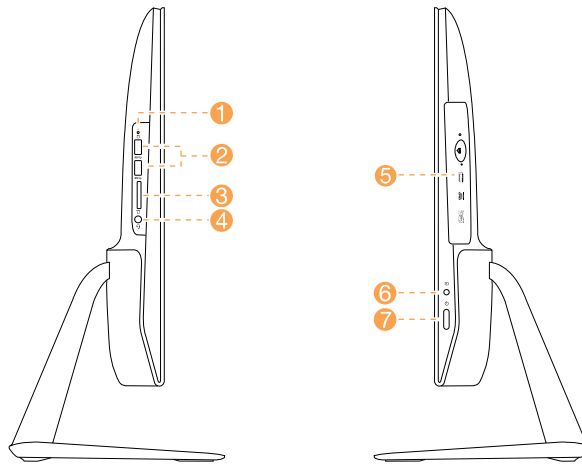
**Attention:** Be careful not to block any air vents on the computer. Blocked air vents can cause overheating.



1. Built-in microphones (2)	3. Built-in camera
2. Camera LED indicator	

## Left and right view

The following illustration shows the location of connectors, controls and components on the left and right side of the computer.

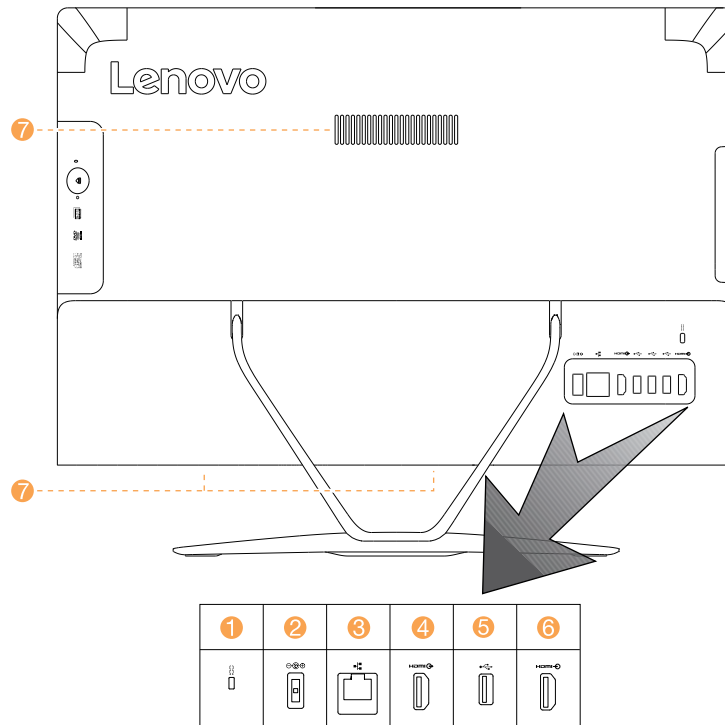


1. Hard disk drive indicator	5. Optical drive
2. USB 3.0 connectors	6. PC mode/HDMI-in switch
3. Memory card reader	7. Power button
4. Combo audio jack	

**Attention:** Do not insert 3-inch discs into the optical drive.

## Rear view

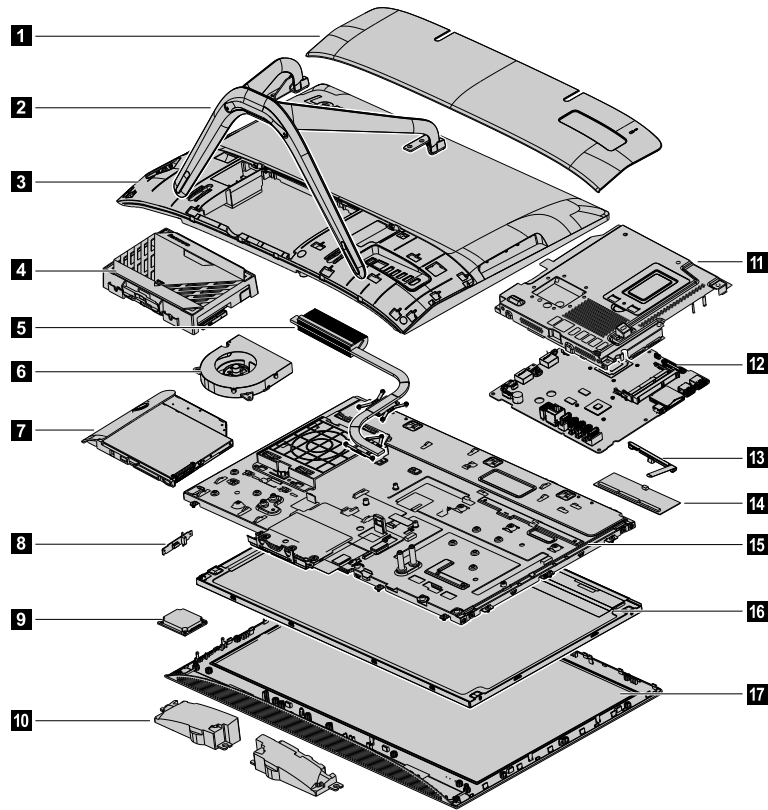
The following illustration shows the location of connectors and components on the rear of the computer.



1. Security cable slot	5. USB 2.0 connector
2. Power connector	6. HDMI-in connector
3. Ethernet connector	7. Air vents
4. HDMI-out connector	

## Hardware components

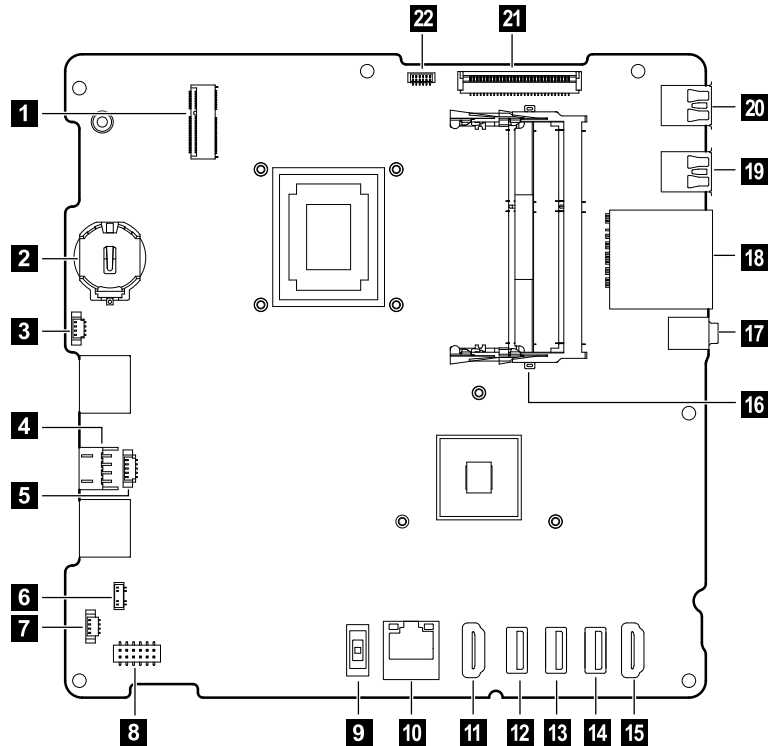
The following illustration shows the components that make up your computer.



1. Foot cover	10. Speakers
2. Computer stand	11. EMI cover
3. Rear cover	12. Motherboard
4. Hard disk drive	13. Camera
5. Heat-sink	14. Memory module
6. System fan	15. Chassis
7. Optical drive	16. LCD panel
8. Power switch board	17. Front bezel
9. Wi-Fi card	

## Identifying parts on the motherboard

The motherboard (sometimes called the planar or system board) is the main circuit board in your computer. It provides basic computing functions and supports a variety of devices that are factory-installed or that you can install later. The following illustration shows the location of connectors and components on the front of the motherboard.



1. Wi-Fi connector	12. USB 2.0 connector
2. Battery	13. USB 2.0 connector
3. System fan connector	14. USB 2.0 connector
4. HDD/ODD power connector	15. HDMI-in connector
5. HDD SATA connector	16. Memory socket
6. Power switch connector	17. Combo audio jack
7. Speaker connector	18. SD card reader
8. Converter connector	19. USB 3.0 connector
9. Power connector	20. USB 3.0 connector
10. Ethernet connector	21. LVDS connector
11. HDMI-out connector	22. Camera connector



---

## Chapter 8. Replacing hardware

**Attention:** Do not remove the computer cover or attempt any repair before reading the “Important safety information” in the Safety and Warranty Guide that was included with your computer. To obtain copies of the Safety and Warranty Guide, go to the Support Web site at: <http://consumersupport.lenovo.com>.

**Note:** Use only parts provided by Lenovo.

---

### General information

#### Pre-disassembly instructions

Before starting the disassembly procedure, make sure that you do the following:

1. Turn off the power to the system and all peripherals.
2. Unplug all power and signal cables from the computer.
3. Place the system on a flat, stable surface.

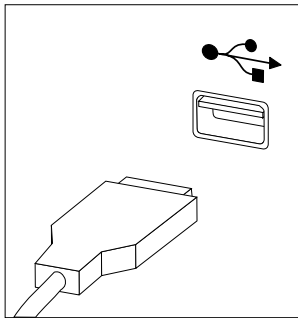
---

## Replacing the keyboard and mouse

**Note:** Your keyboard will be connected to a USB connector at either side or at the rear of the computer.

### To replace the keyboard:

- Step 1. Remove any media (disks, CDs, or memory cards) from the drives, shut down the computer, and turn off all attached devices.
- Step 2. Unplug all power cords from electrical outlets.
- Step 3. Locate the connector for the keyboard. Refer to “Side view of the computer” and “Rear view of the computer”.



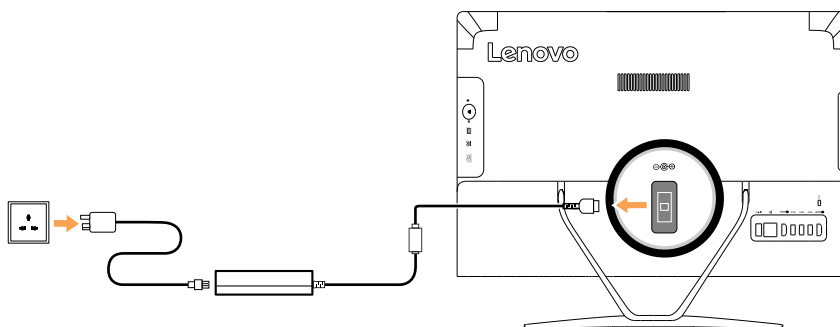
- Step 4. Disconnect the defective keyboard cable from the computer and connect the new keyboard cable to the same connector.
- Step 5. The mouse can be replaced using the same method.

---

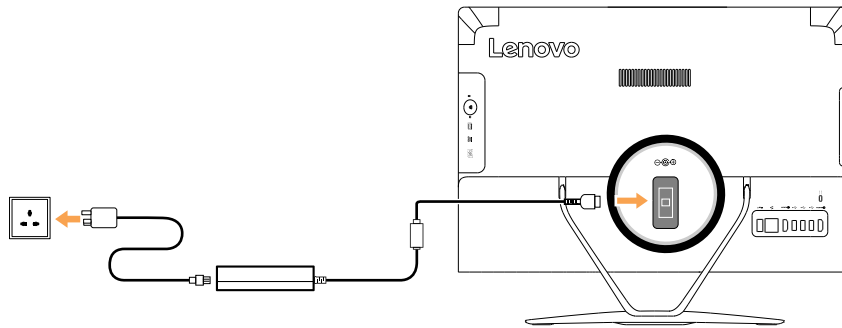
## Replacing the adapter

**Attention:** Turn off the computer and wait 3 to 5 minutes to let it cool down before removing the cover.

- Step 1. Remove any media (disks, CDs, or memory cards) from the drives, shut down the operating system, and turn off the computer and all attached devices.
- Step 2. Disconnect the adapter from the connector on the computer, then unplug the adapter from electrical outlet.



Step 3. Connect the new adapter as shown.

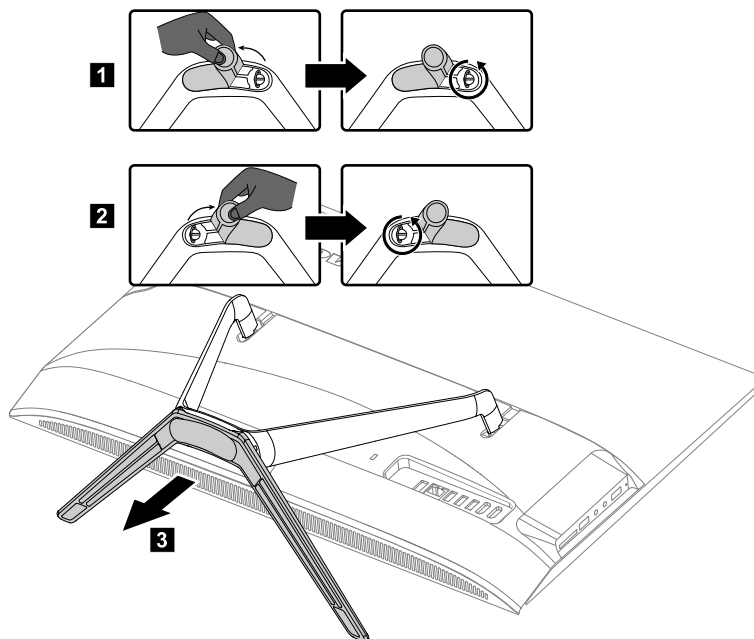


## Removing the stand base

**Attention:** Turn off the computer and wait 3 to 5 minutes to let it cool down before removing the cover.

**Note:** It may be helpful to place the computer face-down on a soft flat surface for this procedure. Lenovo recommends that you use a blanket, towel, or other soft cloth to protect the touch screen from scratches or other damage.

- Step 1. Remove any media (disks, CDs, or memory cards) from the drives, shut down the operating system, and turn off the computer and all attached devices.
- Step 2. Unplug all power cords from electrical outlets.
- Step 3. Disconnect all cables attached to the computer. This includes power cords, input/output (I/O) cables, and any other cables that are connected to the computer. Refer to “Left and right views” and “Rear view” for help with locating the various connectors.
- Step 4. Twist the hand screw ring counter-clockwise until the base comes loose to release the stand base from the stand holder. **1 2**
- Step 5. Slide the stand base out from the holder then put it aside. **3**



Step 6. Refer to “Installing the computer stand” to reinstall the stand base.

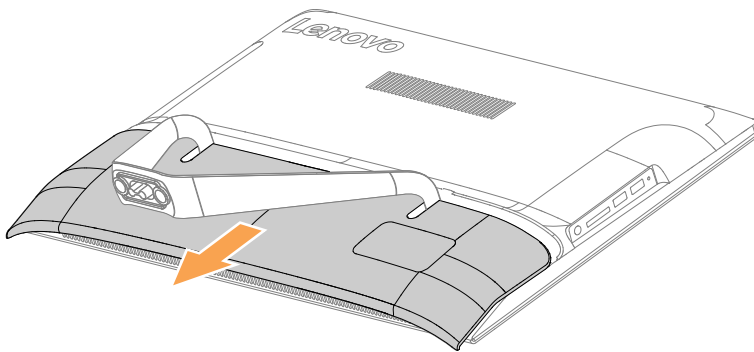
---

## Removing the foot cover

**Attention:** Turn off the computer and wait 3 to 5 minutes to let it cool down before removing the cover.

**Note:** It may be helpful to place the computer face-down on a soft flat surface for this procedure. Lenovo recommends that you use a blanket, towel, or other soft cloth to protect the touch screen from scratches or other damage.

- Step 1. Remove any media (disks, CDs, or memory cards) from the drives, shut down the operating system, and turn off the computer and all attached devices.
- Step 2. Unplug all power cords from electrical outlets.
- Step 3. Disconnect all cables attached to the computer. This includes power cords, input/output (I/O) cables, and any other cables that are connected to the computer. Refer to “Left and right views” and “Rear view” for help with locating the various connectors.
- Step 4. Remove the foot base. Refer to “Removing the foot base”.
- Step 5. Lift up the stand holder then slide out the foot cover as shown.



- Step 6. To reattach the foot cover:
  - a. Lift up the stand holder.
  - b. Line up the foot cover with mounting holes on the back of the computer, then slide it back into position.

---

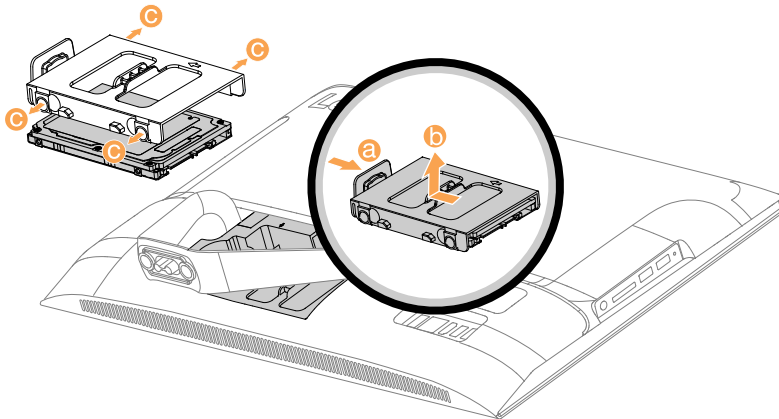
## Replacing the hard disk drive

**Attention:** Turn off the computer and wait 3 to 5 minutes to let it cool down before removing the cover.

**Note:** It may be helpful to place the computer face-down on a soft flat surface for this procedure. Lenovo recommends that you use a blanket, towel, or other soft cloth to protect the touch screen from scratches or other damage.

- Step 1. Remove any media (disks, CDs, or memory cards) from the drives, shut down the operating system, and turn off the computer and all attached devices.
- Step 2. Unplug all power cords from electrical outlets.
- Step 3. Disconnect all cables attached to the computer. This includes power cords, input/output (I/O) cables, and any other cables that are connected to the computer. Refer to “Left and right views” and “Rear view” for help with locating the various connectors.
- Step 4. Remove the stand base. Refer to “Removing the stand base”.
- Step 5. Remove the foot cover. Refer to “Removing the foot cover”.

Step 6. Lift out the hard disk drive and bracket as shown. Push the lock pins outward to release the hard disk drive from the bracket.



Step 7. To install the new hard disk drive:

- a. Line up the new hard disk drive with the bracket and secure it with the pins.
- b. Connect the data and power cables to the new hard disk drive.
- c. Slide the hard disk drive and bracket back into position.

Step 8. Reattach the foot cover and stand base.

---

## Replacing the optical drive

**Attention:** Turn off the computer and wait 3 to 5 minutes to let it cool down before removing the cover.

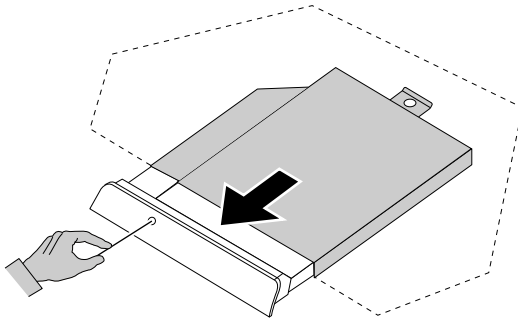
**Note:** It may be helpful to place the computer face-down on a soft flat surface for this procedure. Lenovo recommends that you use a blanket, towel, or other soft cloth to protect the touch screen from scratches or other damage.

- Step 1. Remove any media (disks, CDs, or memory cards) from the drives, shut down the operating system, and turn off the computer and all attached devices.
- Step 2. Unplug all power cords from electrical outlets.
- Step 3. Disconnect all cables attached to the computer. This includes power cords, input/output (I/O) cables, and any other cables that are connected to the computer. Refer to “Left and right views” and “Rear view” for help with locating the various connectors.
- Step 4. Remove the stand base. Refer to “Removing the stand base”.
- Step 5. Remove the foot cover. Refer to “Removing the foot cover”.

Step 6. Locate the optical removal notch, and then use a screw driver push the optical drive out.



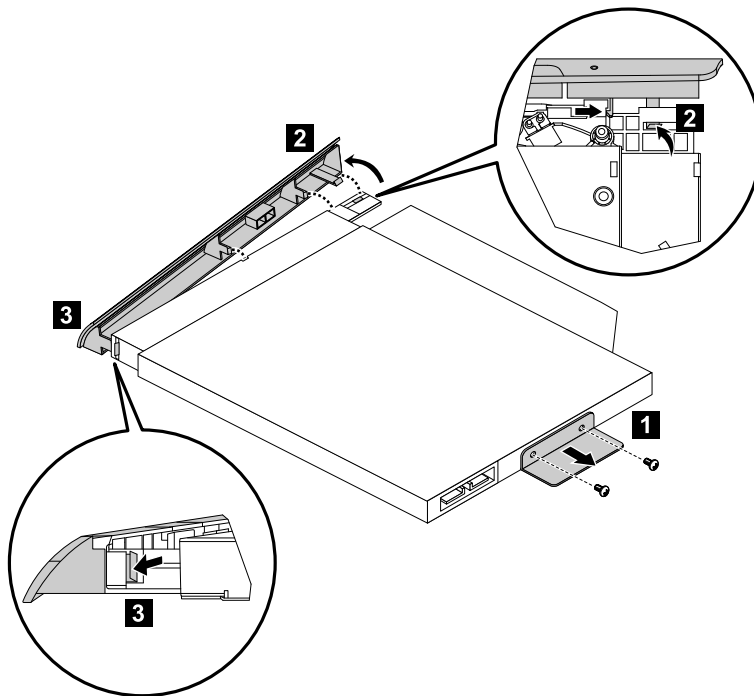
Step 7. Push a small iron stick (paper clip) into the small hole on the optical drive cover so that the disk springs out as shown.



Step 8. Remove the 2 screws that secure the optical drive to the metal bracket. **1**

Step 9. Use a small flat head screwdriver to press and push out the pins that secure the cover to the disk. **2 3**

Step 10. Separate the cover from the defective optical drive.



Step 11. To install the new optical drive:

- a. Align the new optical drive with the cover, and then push the cover back into position.
- b. Slide the new optical drive into the drive bay.

Step 12. Reattach the foot cover and stand base.

---

## Removing the stand holder

**Note:** Turn off the computer and wait 3 to 5 minutes to let it cool down before removing the cover.

**Note:** It may be helpful to place the computer face-down on a soft flat surface for this procedure. Lenovo recommends that you use a blanket, towel, or other soft cloth to protect the computer screen from scratches or other damage.

### To remove the stand holder:

- Step 1. Remove any media (disks, CDs, DVDs, or memory cards) from the drives, shut down the operating system, and turn off the computer and all attached devices.
- Step 2. Unplug all power cords from electrical outlets.
- Step 3. Disconnect all cables attached to the computer. This includes power cords, input/output (I/O) cables, and any other cables that are connected to the computer. Refer to “Left and right view” and “Rear view” for help with locating the various connectors.
- Step 4. Remove the stand base. Refer to “Removing the stand base”.
- Step 5. Remove the foot cover. Refer to “Removing the foot cover”.
- Step 6. Remove the four screws that secure the stand holder to the chassis, then lift up the stand holder to remove it.



- Step 7. To reattach the stand holder:
- Align the holes on the stand holder with mounting holes on the chassis, place the stand holder back into position.
  - Secure the stand holder to the chassis with the four screws.
- Step 8. Line up the foot cover with mounting holes on the back of the computer, then slide it back into position.
- Step 9. Reattach the stand base.

---

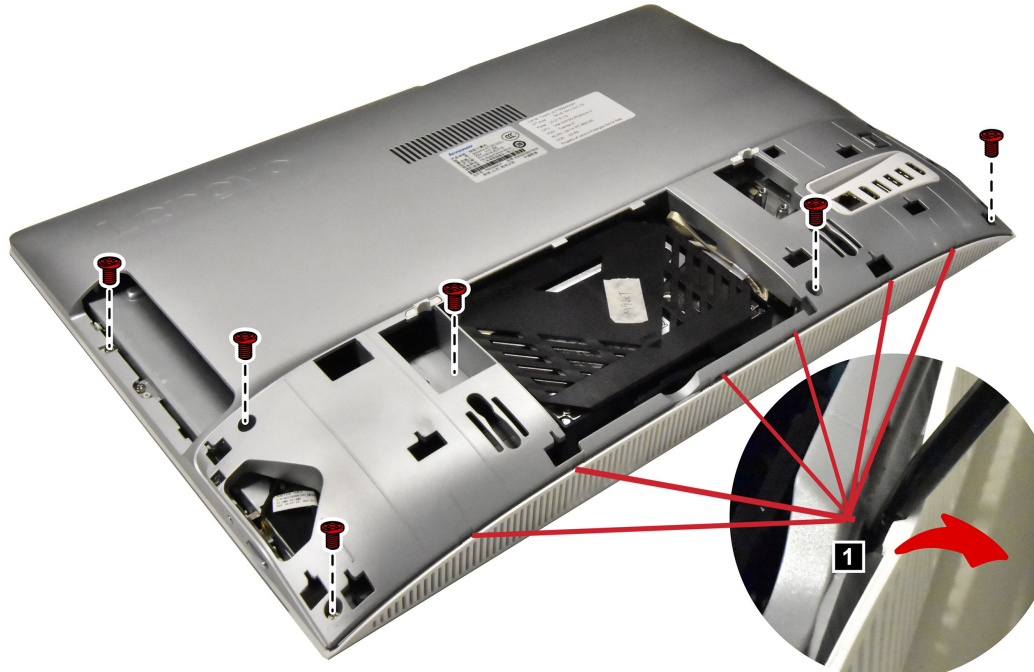
## Removing the rear cover

**Note:** Turn off the computer and wait 3 to 5 minutes to let it cool down before removing the cover.

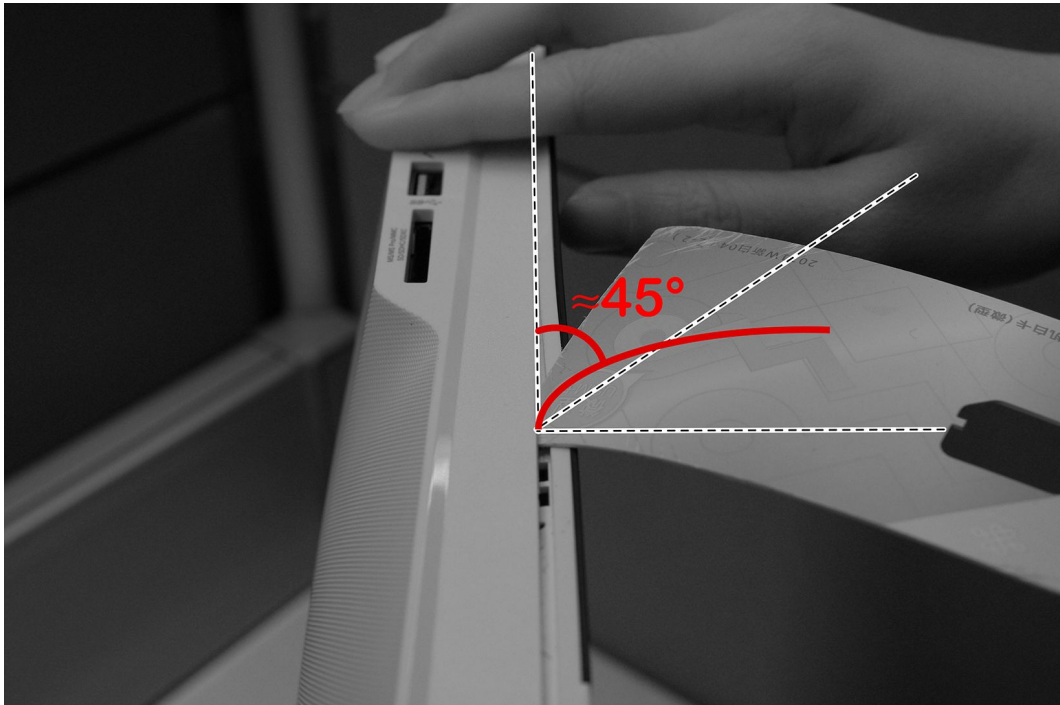
**Note:** It may be helpful to place the computer face-down on a soft flat surface for this procedure. Lenovo recommends that you use a blanket, towel, or other soft cloth to protect the computer screen from scratches or other damage.

### To remove the rear cover:

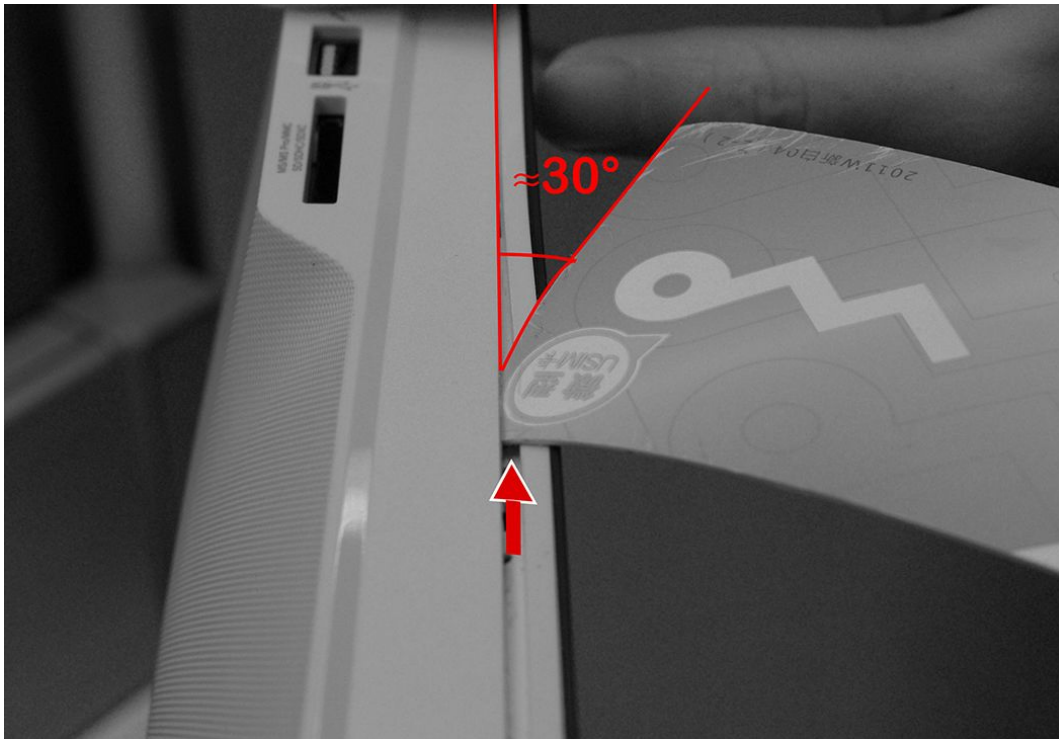
- Remove any media (disks, CDs, DVDs, or memory cards) from the drives, shut down the operating system, and turn off the computer and all attached devices.
- Unplug all power cords from electrical outlets.
- Disconnect all cables attached to the computer. This includes power cords, input/output (I/O) cables, and any other cables that are connected to the computer. Refer to “Left and right view” and “Rear view” for help with locating the various connectors.
- Remove the stand base. Refer to “Removing the stand base”.
- Remove the foot cover. Refer to “Removing the foot cover”.
- Remove the hinge. Refer to “Removing the hinge”.
- Remove the six screws that secure the rear cover to the chassis. Use the flat head of a spudger to pry out the middle cover as shown. **1**



Step 8. Use a mylar sheet insert into the slot in-between the rear cover and front bezel, best practice insert angel is 45° angel as shown.



Step 9. Sweep along the side, best practice sweep angel is keep the side line of the mylar sheet and the slot line in a 30° angel as shown.



Step 10. Lift up the middle cover as shown to remove it.



Step 11. To reattach the rear cover:

- a. Line up the rear cover with chassis, then place the rear cover back.
- b. Secure the rear cover to the chassis with the six screws.

Step 12. Reattach the hinge, foot cover and stand base.

---

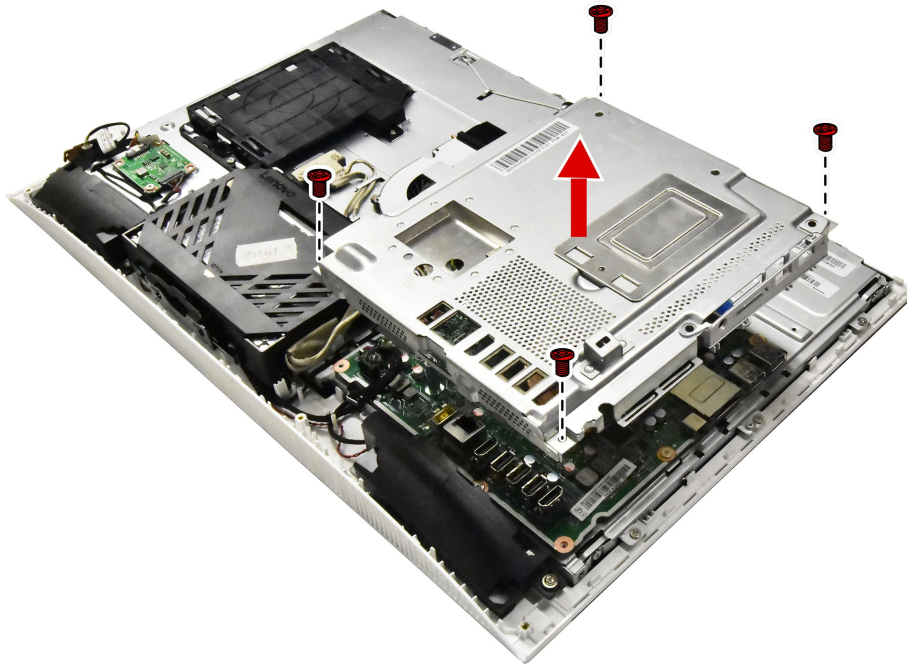
## Removing the EMI cover

**Note:** Turn off the computer and wait 3 to 5 minutes to let it cool down before removing the cover.

**Note:** It may be helpful to place the computer face-down on a soft flat surface for this procedure. Lenovo recommends that you use a blanket, towel, or other soft cloth to protect the computer screen from scratches or other damage.

### To replace the EMI cover

- Step 1. Remove any media (disks, CDs, DVDs, or memory cards) from the drives, shut down the operating system, and turn off the computer and all attached devices.
- Step 2. Unplug all power cords from electrical outlets.
- Step 3. Disconnect all cables attached to the computer. This includes power cords, input/output (I/O) cables, and any other cables that are connected to the computer. Refer to “Left and right view” and “Rear view” for help with locating the various connectors.
- Step 4. Remove the stand base. Refer to “Removing the stand base”.
- Step 5. Remove the foot cover. Refer to “Removing the foot cover”.
- Step 6. Remove the hinge. Refer to “Removing the hinge”.
- Step 7. Remove the rear cover. Refer to “Removing the rear cover”.
- Step 8. Remove the four screws that secure the EMI cover to the chassis, and then lift it up.



- Step 9. To reattach the EMI cover:
  - a. Line up the holes on the EMI cover with mounting holes on the chassis, then place EMI cover back into position.
  - b. Secure the EMI cover to the chassis with four screws.
- Step 10. Reattach the rear cover, hinge, foot cover and stand base.

---

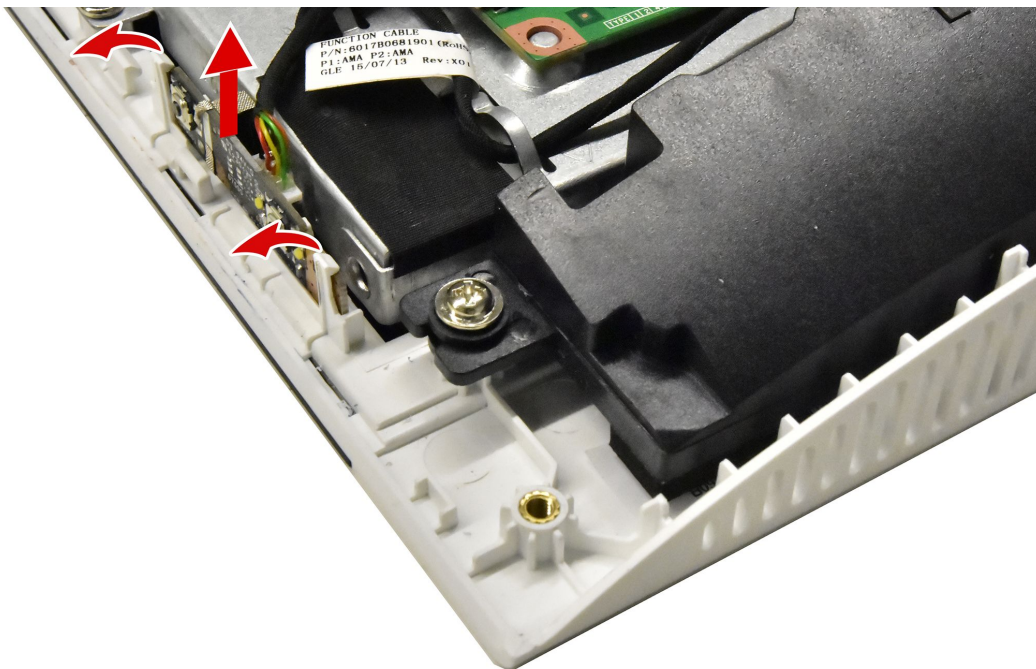
## Replacing the power switch board

**Note:** Turn off the computer and wait 3 to 5 minutes to let it cool down before removing the cover.

**Note:** It may be helpful to place the computer face-down on a soft flat surface for this procedure. Lenovo recommends that you use a blanket, towel, or other soft cloth to protect the computer screen from scratches or other damage.

### To replace the power switch board

- Step 1. Remove any media (disks, CDs, DVDs, or memory cards) from the drives, shut down the operating system, and turn off the computer and all attached devices.
- Step 2. Unplug all power cords from electrical outlets.
- Step 3. Disconnect all cables attached to the computer. This includes power cords, input/output (I/O) cables, and any other cables that are connected to the computer. Refer to “Left and right view” and “Rear view” for help with locating the various connectors.
- Step 4. Remove the stand base. Refer to “Removing the stand base”.
- Step 5. Remove the foot cover. Refer to “Removing the foot cover”.
- Step 6. Remove the hinge. Refer to “Removing the hinge”.
- Step 7. Remove the rear cover. Refer to “Removing the rear cover”.
- Step 8. Push the locking pin outward to release the power switch board, then lift up the power switch board to remove it.
- Step 9. Disconnect the data cable from the power switch board.



- Step 10. To install the power switch board:
  - a. Connect the cable to the new power switch board.
  - b. Attach the new power switch board to the chassis.
  - c. Secure the power switch board with the locking pins.
- Step 11. Reattach the rear cover, hinge, foot cover and stand base.

---

## Replacing the converter board

**Note:** Turn off the computer and wait 3 to 5 minutes to let it cool down before removing the cover.

**Note:** It may be helpful to place the computer face-down on a soft flat surface for this procedure. Lenovo recommends that you use a blanket, towel, or other soft cloth to protect the computer screen from scratches or other damage.

### To replace the converter board:

- Step 1. Remove any media (disks, CDs, DVDs, or memory cards) from the drives, shut down the operating system, and turn off the computer and all attached devices.
- Step 2. Unplug all power cords from electrical outlets.
- Step 3. Disconnect all cables attached to the computer. This includes power cords, input/output (I/O) cables, and any other cables that are connected to the computer. Refer to “Left and right view” and “Rear view” for help with locating the various connectors.
- Step 4. Remove the stand base. Refer to “Removing the stand base”.
- Step 5. Remove the foot cover. Refer to “Removing the foot cover”.
- Step 6. Remove the hinge. Refer to “Removing the hinge”.
- Step 7. Remove the rear cover. Refer to “Removing the rear cover”.
- Step 8. Disconnect the two cables from the converter, and then remove the two screws that secure the converter board to the chassis.
- Step 9. Lift up the converter board to remove it.



- 
- Step 10. To install the new converter board:
    - a. Connect the two cables to the new converter board.
    - b. Align then slide the new converter board into position.

- c. Secure the new converter board with the two screws.

Step 11. Reattach the rear cover, hinge, foot cover and stand base.

---

## Replacing the memory module

**Attention:** Turn off the computer and wait 3 to 5 minutes to let it cool down before removing the cover.

**Note:** It may be helpful to place the computer face-down on a soft flat surface for this procedure. Lenovo recommends that you use a blanket, towel, or other soft cloth to protect the touch screen from scratches or other damage.

Step 1. Remove any media (disks, CDs, DVDs, or memory cards) from the drives, shut down the operating system, and turn off the computer and all attached devices.

Step 2. Unplug all power cords from electrical outlets.

Step 3. Disconnect all cables attached to the computer. This includes power cords, input/output (I/O) cables, and any other cables that are connected to the computer. Refer to “Left and right view” and “Rear view” for help with locating the various connectors.

Step 4. Remove the stand base. Refer to “Removing the stand base”.

Step 5. Remove the foot cover. Refer to “Removing the foot cover”.

Step 6. Remove the hinge. Refer to “Removing the hinge”.

Step 7. Remove the rear cover. Refer to “Removing the rear cover”.

Step 8. Remove the EMI cover. Refer to “Removing the EMI cover”.

Step 9. Push out the latches on both sides of the memory socket to release the memory module and gently pull the memory module upward to remove it from its socket.



---

Step 10. To install the new memory module:

- a. Align the new memory module with the memory socket, then insert it and push down on the top edge. Make sure the latches lock the memory module in place.

Step 11. Reattach the EMI cover, rear cover, hinge, foot cover and stand base.

---

## Replacing the system fan

**Note:** Turn off the computer and wait 3 to 5 minutes to let it cool down before removing the cover.

**Note:** It may be helpful to place the computer face-down on a soft flat surface for this procedure. Lenovo recommends that you use a blanket, towel, or other soft cloth to protect the computer screen from scratches or other damage.

### To replace the system fan

- Step 1. Remove any media (disks, CDs, DVDs, or memory cards) from the drives, shut down the operating system, and turn off the computer and all attached devices.
- Step 2. Unplug all power cords from electrical outlets.
- Step 3. Disconnect all cables attached to the computer. This includes power cords, input/output (I/O) cables, and any other cables that are connected to the computer. Refer to “Left and right view” and “Rear view” for help with locating the various connectors.
- Step 4. Remove the stand base. Refer to “Removing the stand base”.
- Step 5. Remove the foot cover. Refer to “Removing the foot cover”.
- Step 6. Remove the hinge. Refer to “Removing the hinge”.
- Step 7. Remove the rear cover. Refer to “Removing the rear cover”.
- Step 8. Remove the EMI cover. Refer to “Removing the EMI cover”.
- Step 9. Remove the three screws that secure the system fan to the chassis.
- Step 10. Disconnect the power cable from the motherboard.
- Step 11. Lift up the system fan to remove it.



Step 12. To install the new system fan:

- a. Place the new system fan into position, and then secure it to the chassis with three screws.

- b. Connect the system fan power cable to the connector on the motherboard.

Step 13. Reattach the EMI cover, rear cover, hinge, foot cover and stand base.

---

## Replacing the heat-sink

**Note:** Turn off the computer and wait 3 to 5 minutes to let it cool down before removing the cover.

**Note:** It may be helpful to place the computer face-down on a soft flat surface for this procedure. Lenovo recommends that you use a blanket, towel, or other soft cloth to protect the computer screen from scratches or other damage.

### To replace the heat-sink:

- Step 1. Remove any media (disks, CDs, DVDs, or memory cards) from the drives, shut down the operating system, and turn off the computer and all attached devices.
- Step 2. Unplug all power cords from electrical outlets.
- Step 3. Disconnect all cables attached to the computer. This includes power cords, input/output (I/O) cables, and any other cables that are connected to the computer. Refer to “Left and right view” and “Rear view” for help with locating the various connectors.
- Step 4. Remove the stand base. Refer to “Removing the stand base”.
- Step 5. Remove the foot cover. Refer to “Removing the foot cover”.
- Step 6. Remove the hinge. Refer to “Removing the hinge”.
- Step 7. Remove the rear cover. Refer to “Removing the rear cover”.
- Step 8. Remove the EMI cover. Refer to “Removing the EMI cover”.

- Step 9. Remove the screws that secure the heat-sink to the motherboard and chassis.
- Step 10. Slide then lift up the heat-sink to remove it.



**Attention:** Place the heat-sink upside down on a flat surface to prevent thermal grease from contaminating other components.

**Attention:** Use an alcohol pad to wipe the thermal grease off the CPU.

- Step 11. To install the new heat-sink:
- Line up the new heat-sink with mounting holes on the motherboard, then place it into position.
  - Follow the numbers printed on the new heat-sink to secure it in order using the screws.
  - Use the sealing tape to seal the gap in-between the system fan and heat-sink.
- Step 12. Reattach the EMI cover, rear cover, hinge, foot cover and stand base.

---

## Replacing the speaker system

**Note:** Turn off the computer and wait 3 to 5 minutes to let it cool down before removing the cover.

**Note:** It may be helpful to place the computer face-down on a soft flat surface for this procedure. Lenovo recommends that you use a blanket, towel, or other soft cloth to protect the computer screen from scratches or other damage.

### To replace the speaker system:

- Step 1. Remove any media (disks, CDs, DVDs, or memory cards) from the drives, shut down the operating system, and turn off the computer and all attached devices.
- Step 2. Unplug all power cords from electrical outlets.

- Step 3. Disconnect all cables attached to the computer. This includes power cords, input/output (I/O) cables, and any other cables that are connected to the computer. Refer to “Left and right view” and “Rear view” for help with locating the various connectors.
- Step 4. Remove the stand base. Refer to “Removing the stand base”.
- Step 5. Remove the foot cover. Refer to “Removing the foot cover”.
- Step 6. Remove the hinge. Refer to “Removing the hinge”.
- Step 7. Remove the rear cover. Refer to “Removing the rear cover”.
- Step 8. Remove the EMI cover. Refer to “Removing the EMI cover”.
- Step 9. Disconnect the speaker cables from the connector on the motherboard.
- Step 10. Remove the four screws that secure the speaker system to the chassis, then lift up the speaker system to remove it.



- Step 11. To install the new speaker system:
  - a. Place the new speaker system into position, then secure it with four screws.
  - b. Connect the new speaker cables to the connector on the motherboard.
- Step 12. Reattach the EMI cover, rear cover, hinge, foot cover and stand base.

---

## Replacing the Wi-Fi card

**Note:** Turn off the computer and wait 3 to 5 minutes to let it cool down before removing the cover.

**Note:** It may be helpful to place the computer face-down on a soft flat surface for this procedure. Lenovo recommends that you use a blanket, towel, or other soft cloth to protect the computer screen from scratches or other damage.

### To replace the Wi-Fi card:

- Step 1. Remove any media (disks, CDs, DVDs, or memory cards) from the drives, shut down the operating system, and turn off the computer and all attached devices.

- Step 2. Unplug all power cords from electrical outlets.
- Step 3. Disconnect all cables attached to the computer. This includes power cords, input/output (I/O) cables, and any other cables that are connected to the computer. Refer to “Left and right view” and “Rear view” for help with locating the various connectors.
- Step 4. Remove the stand base. Refer to “Removing the stand base”.
- Step 5. Remove the foot cover. Refer to “Removing the foot cover”.
- Step 6. Remove the hinge. Refer to “Removing the hinge”.
- Step 7. Remove the rear cover. Refer to “Removing the rear cover”.
- Step 8. Remove the EMI cover. Refer to “Removing the EMI cover”.
- Step 9. Disconnect the antenna cables from the Wi-Fi card.
- Step 10. Remove the screw that secures the Wi-Fi card to the motherboard.
- Step 11. Lift up the Wi-Fi card to remove it from the socket.



- Step 12. To install the new Wi-Fi card:
  - a. Insert the notched end of the Wi-Fi card into the card port on the motherboard.
  - b. Secure new the Wi-Fi card to the motherboard with the screw.
  - c. Connect the antenna cables to the new Wi-Fi card.

Step 13. Reattach the EMI cover, rear cover, hinge, foot cover and stand base.

---

## Replacing the motherboard

**Note:** Turn off the computer and wait 3 to 5 minutes to let it cool down before removing the cover.

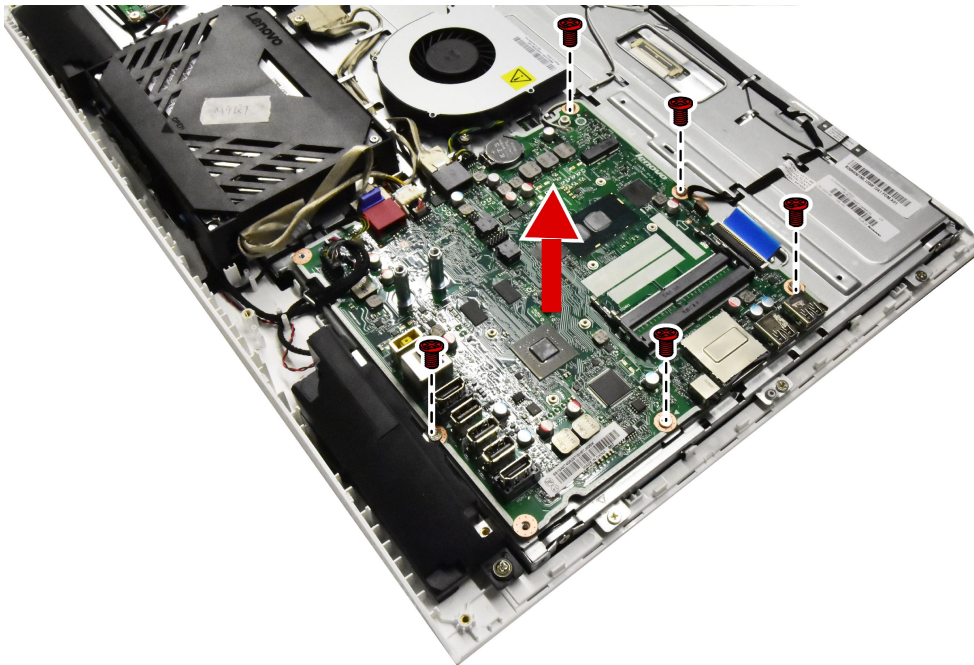
**Note:** It may be helpful to place the computer face-down on a soft flat surface for this procedure. Lenovo recommends that you use a blanket, towel, or other soft cloth to protect the computer screen from scratches or other damage.

## To replace the motherboard:

- Step 1. Remove any media (disks, CDs, DVDs, or memory cards) from the drives, shut down the operating system, and turn off the computer and all attached devices.
- Step 2. Unplug all power cords from electrical outlets.
- Step 3. Disconnect all cables attached to the computer. This includes power cords, input/output (I/O) cables, and any other cables that are connected to the computer. Refer to “Left and right view” and “Rear view” for help with locating the various connectors.
- Step 4. Remove the foot cover. Refer to “Removing the foot cover”.
- Step 5. Remove the hinge. Refer to “Removing the hinge”.
- Step 6. Remove the optical drive. Refer to “Replacing the optical drive”.
- Step 7. Remove the rear cover. Refer to “Removing the rear cover”.
- Step 8. Remove the EMI cover. Refer to “Removing the EMI cover”.
- Step 9. Remove the memory modules. Refer to “Replacing a memory module”.
- Step 10. Remove the heat-sink. Refer to “Replacing the heat-sink”.
- Step 11. Remove the Wi-Fi card. Refer to “Replacing the Wi-Fi card”.
- Step 12. Remove all the cables from the motherboard.



Step 13. Remove the five screws that secure the motherboard to the chassis and lift the motherboard up to remove it.



Step 14. To install the new motherboard:

- a. Line up the holes on the new motherboard with the mounting holes chassis and place the new motherboard into position.
- b. Use the screws to secure the new motherboard to the chassis.
- c. Connect all the cables to the new motherboard.

Step 15. Install the following parts to the new motherboard:

- Wi-Fi card
- Heat-sink
- Memory module

Step 16. Reattach the EMI cover, rear cover, hinge, foot cover and stand base.

---

## Replacing the camera

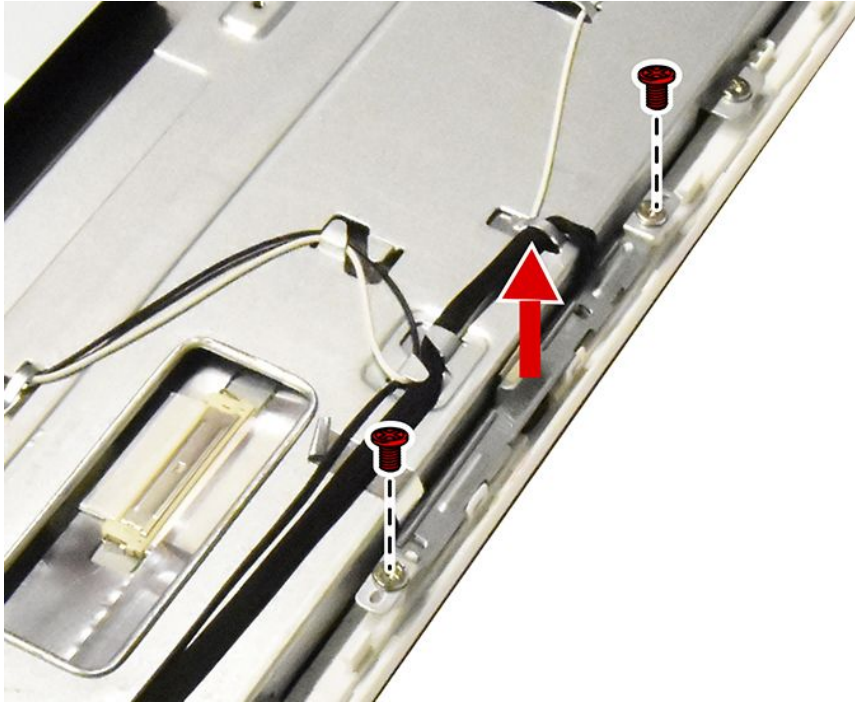
**Note:** Turn off the computer and wait 3 to 5 minutes to let it cool down before removing the cover.

**Note:** It may be helpful to place the computer face-down on a soft flat surface for this procedure. Lenovo recommends that you use a blanket, towel, or other soft cloth to protect the computer screen from scratches or other damage.

**To replace the camera:**

- Step 1. Remove any media (disks, CDs, DVDs, or memory cards) from the drives, shut down the operating system, and turn off the computer and all attached devices.
- Step 2. Unplug all power cords from electrical outlets.
- Step 3. Disconnect all cables attached to the computer. This includes power cords, input/output (I/O) cables, and any other cables that are connected to the computer. Refer to “Left and right view” and “Rear view” for help with locating the various connectors.

- Step 4. Remove the stand base. Refer to “Removing the stand base”.
- Step 5. Remove the foot cover. Refer to “Removing the foot cover”.
- Step 6. Remove the optical drive. Refer to “Replacing the optical drive”.
- Step 7. Remove the hinge. Refer to “Removing the hinge”.
- Step 8. Remove the rear cover. Refer to “Removing the rear cover”.
- Step 9. Remove the two screws that secure camera to the front bezel.



- Step 10. Disconnect the camera data cable from the connector on the camera.
- Step 11. To install the new camera:
  - a. Connect the data cable to the new camera.
  - b. Place the new camera into position, secure the camera to the front bezel with the two screws.
- Step 12. Reattach the rear cover, optical drive, hinge, foot cover and stand base.

---

## Replacing the LCD panel module

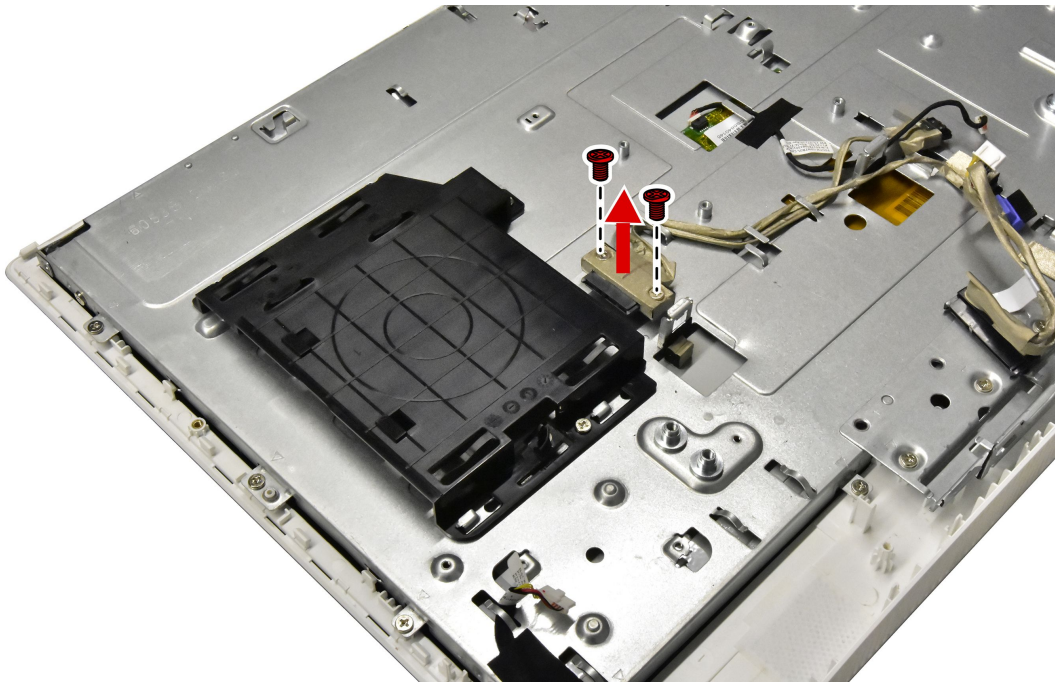
**Note:** Turn off the computer and wait 3 to 5 minutes to let it cool down before removing the cover.

**Note:** It may be helpful to place the computer face-down on a soft flat surface for this procedure. Lenovo recommends that you use a blanket, towel, or other soft cloth to protect the computer screen from scratches or other damage.

### To replace the LCD panel module:

- Step 1. Remove any media (disks, CDs, DVDs, or memory cards) from the drives, shut down the operating system, and turn off the computer and all attached devices.
- Step 2. Unplug all power cords from electrical outlets.
- Step 3. Disconnect all cables attached to the computer. This includes power cords, input/output (I/O) cables, and any other cables that are connected to the computer. Refer to “Left and right view” and “Rear view” for help with locating the various connectors.

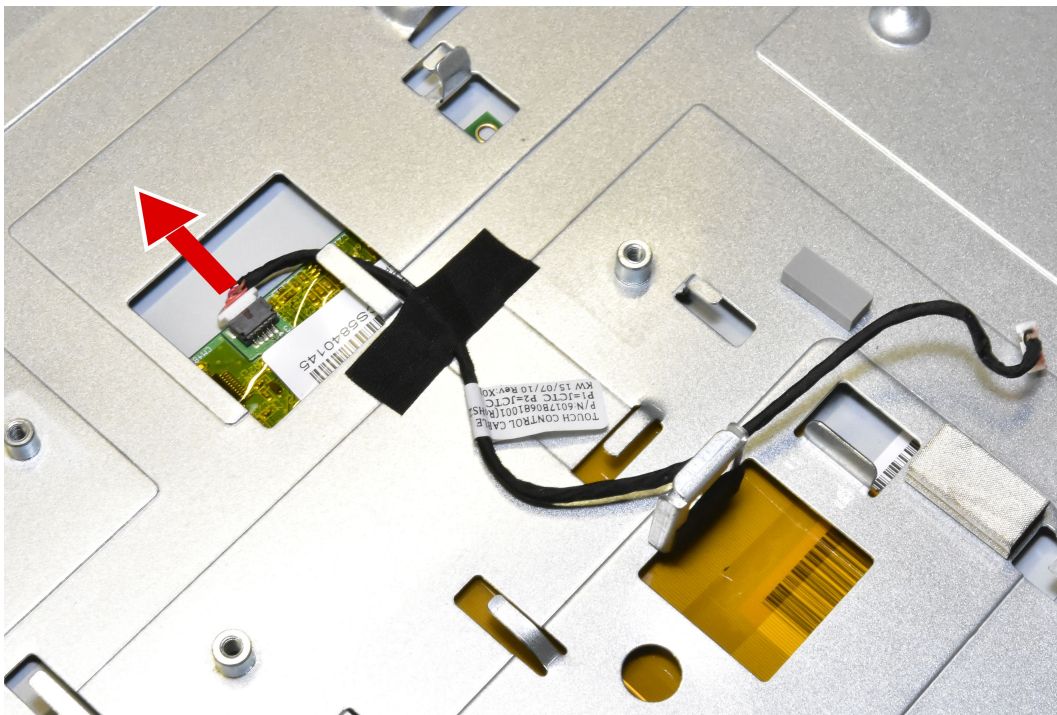
- Step 4. Remove the stand base. Refer to “Removing the stand base”.
- Step 5. Remove the foot cover. Refer to “Removing the foot cover”.
- Step 6. Remove the hinge. Refer to “Removing the stand hinge”.
- Step 7. Remove the hard disk drive. Refer to “Replacing hard disk drive”.
- Step 8. Remove the optical drive. Refer to “Replacing the optical drive”.
- Step 9. Remove the rear cover. Refer to “Removing the rear cover”.
- Step 10. Remove the optical drive housing. Refer to “Removing the optical drive housing”.
- Step 11. Remove the power switch board. Refer to “Replacing the power switch board”.
- Step 12. Remove the converter board. Refer to “Replacing the converter board”.
- Step 13. Remove the EMI cover. Refer to “Removing the EMI cover”.
- Step 14. Remove the memory module. Refer to “Replacing a memory module”.
- Step 15. Remove the Wi-Fi card. Refer to “Replacing the Wi-Fi card”.
- Step 16. Remove the heat-sink. Refer to “Replacing the heat-sink”.
- Step 17. Remove the system fan. Refer to “Replacing the system fan”.
- Step 18. Remove the speaker system. Refer to “Replacing the speaker system”.
- Step 19. Remove the motherboard. Refer to “Replacing the motherboard”.
- Step 20. Remove the camera. Refer to “Replacing the camera”.
- Step 21. Remove the optical and hard disk drive connector as shown.



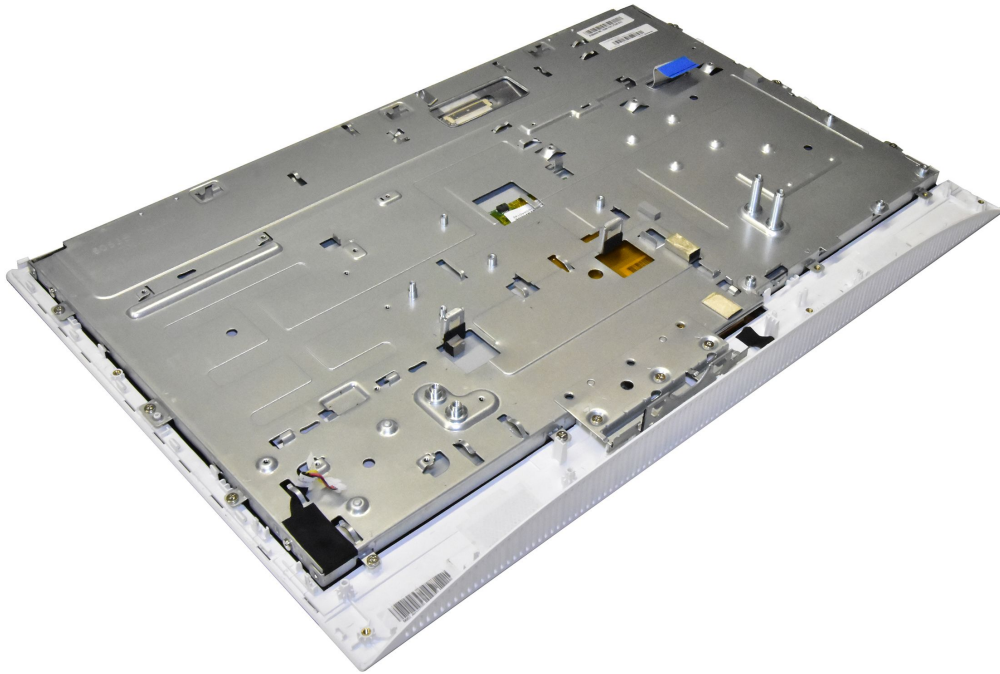
- Step 22. Remove the Wi-Fi antenna as shown.



Step 23. Remove the touch control cable as shown.



Step 24. Remove the LCD module as shown.



Step 25. To install the new the LCD panel module:

The new LED panel module including:	<ol style="list-style-type: none"><li>1. LED panel</li><li>2. LVDS cable</li><li>3. Touch control board (Touch model only)</li><li>4. LCD to converter cable</li><li>5. Panel glass</li><li>6. Front bezel</li></ol>
-------------------------------------	--

- a. Attach the motherboard to the new LCD module.
- b. Attach the heat-sink to the motherboard, and secure the heat-sink with the eight screws.
- c. Line up the optical drive connector with mounting holes on the chassis, and then secure connector with the two screws.
- d. Connect the optical drive and hard disk drive SATA cable and power cable to the connectors on the motherboard.
- e. Attach the Wi-Fi Antenna to the new LCD module, and connect to the Wi-Fi card.
- f. Attach the camera to the new LCD module.
- g. Connect the camera cable to the connector on the motherboard.
- h. Attach the converter to the new LCD module.
- i. Connect the converter cable to the connector on the motherboard.
- j. Attach the fan to the new LCD module, and connect the fan power cable to the connector on the motherboard.
- k. Attach the power switch board to the new LCD module, and connect the power cable to the connector on the motherboard.
- l. Attach the speaker to the new LCD module, and connect the speaker cable to the motherboard.
- m. Connect the touch cable to the connectors on the motherboard and touch control board on the new LCD panel.

- n. Connect the LVDS cable to the connector on the motherboard.
- o. Attach the EMI cover to the new LCD module.
- p. Line up the optical housing with the guide track on the LCD module, then slide the housing into position and secure the housing with the three screws.
- q. Attach the hard disk drive to the new LCD module.
- r. Secure the rear cover to the new LED module with the six screws.
- s. Attach the hinge to the chassis and secure it with the four screws.
- t. Line up the foot cover with rear cover, then slide the foot cover into position.

Step 26. Reattach the stand base with hinge.

---

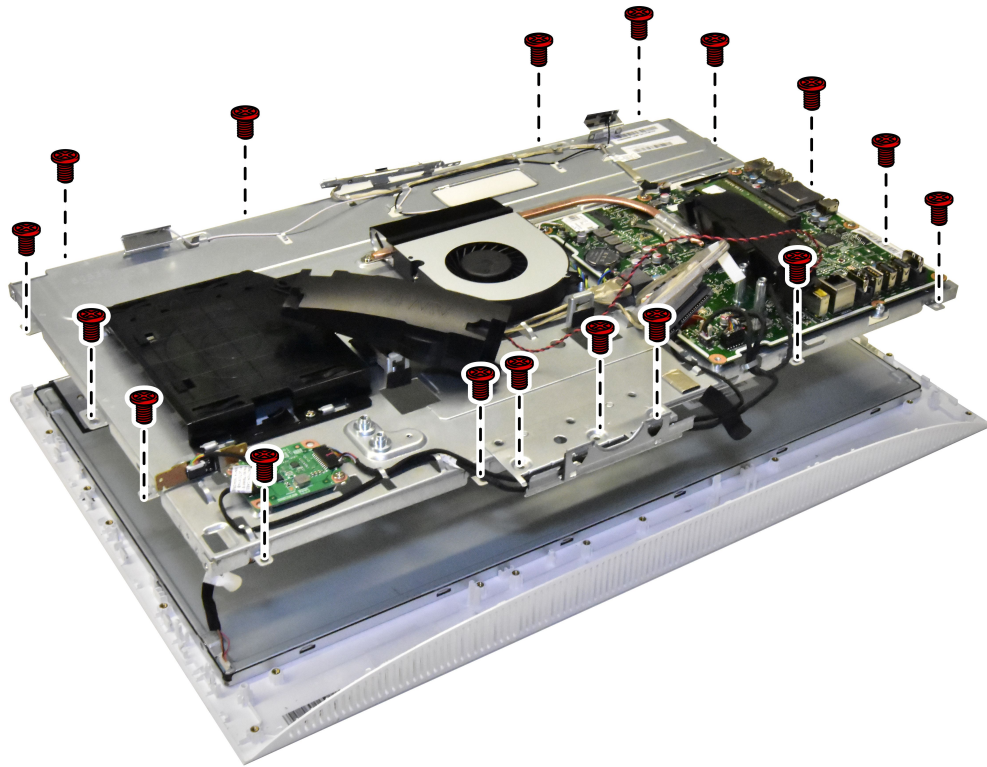
## Replacing the LCD panel module-None Touch

**Note:** Turn off the computer and wait 3 to 5 minutes to let it cool down before removing the cover.

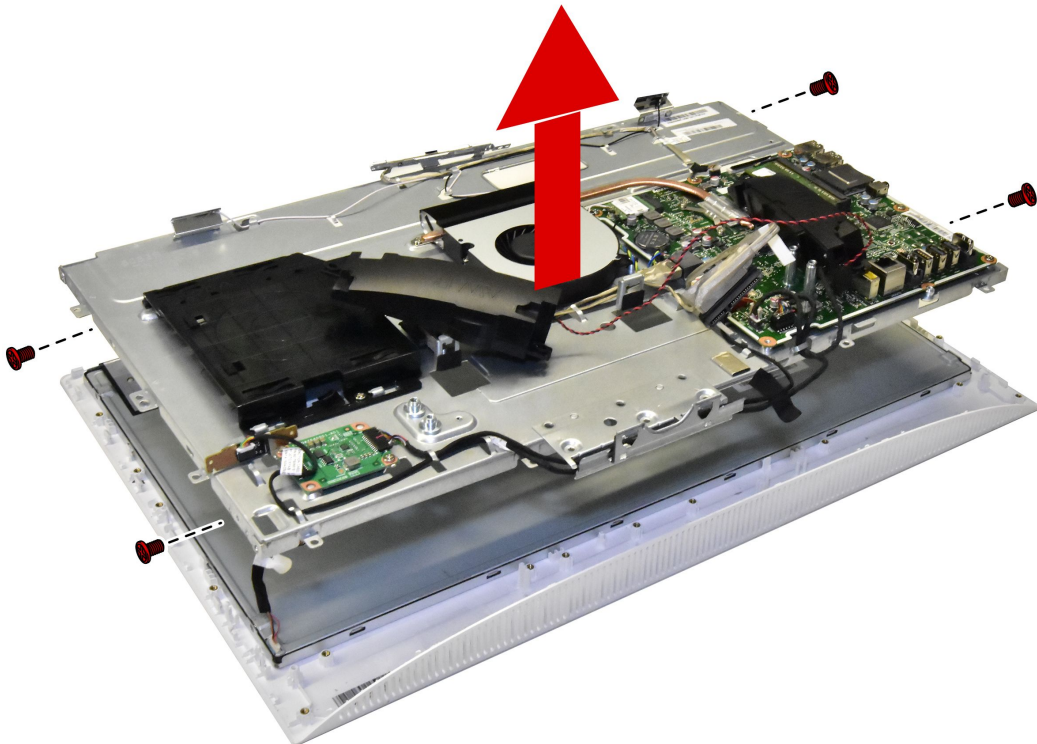
**Note:** It may be helpful to place the computer face-down on a soft flat surface for this procedure. Lenovo recommends that you use a blanket, towel, or other soft cloth to protect the computer screen from scratches or other damage.

### To replace the LCD panel module:

- Step 1. Remove any media (disks, CDs, DVDs, or memory cards) from the drives, shut down the operating system, and turn off the computer and all attached devices.
- Step 2. Unplug all power cords from electrical outlets.
- Step 3. Disconnect all cables attached to the computer. This includes power cords, input/output (I/O) cables, and any other cables that are connected to the computer. Refer to “Left and right view” and “Rear view” for help with locating the various connectors.
- Step 4. Remove the stand base. Refer to “Removing the stand base”.
- Step 5. Remove the foot cover. Refer to “Removing the foot cover”.
- Step 6. Remove the hinge. Refer to “Removing the stand hinge”.
- Step 7. Remove the hard disk drive. Refer to “Replacing hard disk drive”.
- Step 8. Remove the optical drive. Refer to “Replacing the optical drive”.
- Step 9. Remove the rear cover. Refer to “Removing the rear cover”.
- Step 10. Remove the power switch board. Refer to “Replacing the power switch board”.
- Step 11. Remove the converter board. Refer to “Replacing the converter board”.
- Step 12. Remove the EMI cover. Refer to “Removing the EMI cover”.
- Step 13. Remove the speaker system. Refer to “Replacing the speaker system”.
- Step 14. Remove the camera. Refer to “Replacing the camera”.
- Step 15. Remove the seventeen screws that secure the chassis to the front bezel.



Step 16. Remove the four screws that secure the LCD panel to the chassis, disconnect the LVDS cable from the motherboard, then lift up the chassis to remove it.



Step 17. Remove the LVDS cable from the connector on the LCD, then lift up the LCD panel from the front bezel.



Step 18. To install the new the LCD panel module:

The new LED panel module including:	1. LED panel 2. Converter cable
-------------------------------------	------------------------------------

- a. Align the new LCD panel with front bezel, then place the new LCD into position.
- b. Attach the LVDS cable to the connector on the new LCD panel.
- c. Align the chassis with the front bezel, then place the chassis into position and secure it with seventeen screws.
- d. Connect the LVDS cable to the motherboard.
- e. Reattach the camera to the front bezel.
- f. Reattach the converter to the front bezel.
- g. Reattach the power switch board to the front bezel.
- h. Attach the EMI cover to the chassis.
- i. Reattach the rear cover to the chassis with the six screws.
- j. Attach the hard disk drive to the chassis.
- k. Attach the hinge to the chassis and secure it with the four screws.
- l. Line up the foot cover with rear cover, and slide the foot cover into position.

Step 19. Reattach the stand base with hinge.

## Chapter 9. FRU lists

This chapter lists the information on the field replaceable units (FRUs) for ideacentre All-In-One 300–22ACL desktop computer.

**Attention:** Be sure to read and understand all the safety information before replacing any FRUs.

**Notes:** FRUs that have a 1 or 2 in the CRU column are Customer Replaceable Units (CRUs).

- **1**– identifies parts that are fairly simple to replace, requiring few or no tools.
- **2**– identifies parts that are slightly more difficult to replace.
- **N**– identifies parts that are not to be replaced by the customer.

Fru P/N	Description	Basic Name
54Y8917	CRU,CMN 90W Common adapter	AC_ADAPTER
54Y8966	AC_ADAPTER,90W,100-240V,3P	AC_ADAPTER
54Y8925	AC_ADAPTER,120W,100-240V,3P	AC_ADAPTER
00XD116	WLAN,AIO 300-23ACL	ANTENNA
00UW123	MB,A4,UMA,HDMI IN,WIN DPK	BDPLANAR
00UW124	MB,E1,UMA,HDMI IN,NO DPK	BDPLANAR
00UW125	MB,E1,UMA,HDMI IN,WIN DPK	BDPLANAR
00UW113	MB A6 UMA WIN DPK	BDPLANAR
00UW114	MB A4 UMA NO DPK	BDPLANAR
00UW126	MB,A6,1G,NO DPK	BDPLANAR
00UW112	MB A6 UMA NO DPK	BDPLANAR
00UW135	MB,A6,2G,WIN DPK	BDPLANAR
00UW134	MB,A6,2G,NO DPK	BDPLANAR
00UW131	MB,E2,1G,WIN DPK	BDPLANAR
00UW133	MB,A8,2G,WIN DPK	BDPLANAR
00UW132	MB,A8,2G,NO DPK	BDPLANAR
00UW119	MB E1 UMA WIN DPK	BDPLANAR
00UW118	MB E1 UMA NO DPK	BDPLANAR
00UW117	MB E2 UMA WIN DPK	BDPLANAR
00UW116	MB E2 UMA NO DPK	BDPLANAR
00UW122	MB,A4,UMA,HDMI IN,NO DPK	BDPLANAR
00UW121	MB,A6,UMA,HDMI IN,WIN DPK	BDPLANAR
00UW120	MB,A6,UMA,HDMI IN,NO DPK	BDPLANAR
00UW128	MB,A4,1G,NO DPK	BDPLANAR
00UW127	MB,A6,1G,WIN DPK	BDPLANAR
00UW130	MB,E2,1G,NO DPK	BDPLANAR
00UW129	MB,A4,1G,WIN DPK	BDPLANAR

Fru P/N	Description	Basic Name
00UW115	MB A4 UMA WIN DPK	BDPLANAR
31038885	LW BLK1.0m Taiwan C5 power cord(R)	CABLE
31049498	Volex 1.0M C5 KOR power cord	CABLE
00XD574	CVTER_MB_C51	CABLE
31049499	Volex 1.0M C5 TW power cord	CABLE
31033857	LW BLK1.0m3wire ULCSA power cord(R)	CABLE
31035828	LW BLK1.0m Brazil power cord(R)	CABLE
31049501	Volex 1.0M C5 SA power cord	CABLE
00XD617	CVTER_MB_C41	CABLE
31049502	Volex 1.0M C5 ISI power cord	CABLE
31039103	LW BLK1.0m Switzerland C5 power cord(R)	CABLE
00XD616	CVTER_PANEL_LG_IPS,C41	CABLE
31049504	Volex 1.0M C5 ITY power cord	CABLE
31039100	LW BLK1.0m Argentina C5 power cord(R)	CABLE
31035395	LW BLK1.0m India power cord(R)	CABLE
31033858	VL BLK1.0m3wire ULCSA power cord(R)	CABLE
31049496	Volex 1.0M C5 UK power cord	CABLE
31049500	Volex 1.0M C5 ANZ power cord	CABLE
00XD620	LVDS_LG_IPS,C41	CABLE
31049517	LX(ASAP) 1.0M C5 UL power cord	CABLE
31039105	LW BLK1.0m SA C5 power cord(R)	CABLE
00XD613	CVTER_PANEL_LGE,C41	CABLE
00XD618	LVDS_LG,C41	CABLE
31049518	LX(ASAP) 1.0M C5 EU power cord	CABLE
00XD619	LVDS_Samsung_AUO,C41	CABLE
31049497	Volex 1.0M C5 EU power cord	CABLE
31039101	LW BLK1.0m Denmark C5 power cord(R)	CABLE
31039104	LW BLK1.0m Italy C5 power cord(R)	CABLE
31035397	LW BLK1.0m ANZ power cord(R)	CABLE
31035396	LW BLK1.0m UK power cord(R)	CABLE
31045147	LX(ASAP) 1.0M C5 CCC power cord	CABLE
31039106	LW BLK1.0m Korea C5 power cord(R)	CABLE
31032953	GS BLK1.0m3wire CCC power cord(R)	CABLE
00XD169	POWER SWITCH CABLE,C51	CABLE
31049520	LX(ASAP) 1.0M C5 ANZ power cord	CABLE
00XD105	SATA_HDD_ODD_Power	CABLE
31049508	Volex 1.0M C5 SWI power cord	CABLE
31049507	Volex 1.0M C5 LA power cord	CABLE
31039107	LW BLK1.0m Israel C5 power cord(R)	CABLE

Fru P/N	Description	Basic Name
31049505	Volex 1.0M C5 BR power cord	CABLE
00XD614	CVTER_PANEL_SAMSUNG,C41	CABLE
31049503	Volex 1.0M C5 DEN power cord	CABLE
31035332	LW BLK1.0m VDE power cord(R)	CABLE
00XD615	CVTER_PANEL_AUO,C41	CABLE
01AH311	AVC C5130 720P 1MIC Z CAM	CAMERA
00PC416	Bison CM 720P 5838 Hi165 12D 1DM	CAMERA
00PC412	AVC CM 720P 5838 Hi165 12D 1DM	CAMERA
00PC420	LT CM 720P 5840 Hi162C 12D 1DM	CAMERA
01AJ763	Switch board with HDMI IN C51	CARDPOP
01AJ750	Swith Board C5105	CARDPOP
01AJ751	SSD CONNECT BOARD MP	CARDPOP
00XD579	Slider Cover Black,nHDMI In,C41	COVER
00XD580	Slider Cover White,nHDMI In,C41	COVER
00XD581	Slider Cover Black,HDMI In,C41	COVER
00XD582	Slider Cover White,HDMI In,C41	COVER
18200835	AUO M215HTN01.1	DISPLAY
00PC202	DT_KYB,DOK5321(US)W-Silk USB,US	DT_KYB
00PC201	DT_KYB,DOK5321(US)B-Silk USB,US	DT_KYB
00PC723	FAN 90x15mm Sysfan for S5130	FAN
16200688	ST Grenada BP2 ST1000DM003 1TB HDD	HDD_ASM
16200544	WDXL500A WD5000AAKX-08U6AA0 500G HDD-LH	HDD_ASM
45K0629	HDD,500G,7200,DT3,SATA3,STD	HDD_ASM
45K0623	HDD,1TB,7200,DT3,SATA3,STD	HDD_ASM
16200613	WD XL1000B WD10EZEX-08M2NA0 1TB HDD	HDD_ASM
16200674	ST Pharaoh 4K Non-MC ST500DM002 500GHDD	HDD_ASM
16200513	TSB Mars 4K 1TB DT01ACA100 -LH	HDD_ASM
16200512	TSB Mars 4K 500G DT01ACA050 -LH	HDD_ASM
00XD072	HEATSINK AMD DIS	HEATSINK
00XD073	HEATSINK AMD UMA	HEATSINK
25210994	Liteon SK-8861(GB) 2.4G KB-White8	KYB_MOUSE
25209112	Primax KB4721(US) B-Silk USB KB-LVT8	KYB_MOUSE
25209201	Liteon SK-8861(PT) 2.4G KB-Black8	KYB_MOUSE
25209194	Liteon SK-8861(FR) 2.4G KB-Black8	KYB_MOUSE
25209151	Sunrex EKB-10YA(RU) W-Silk USB KB-LVT8	KYB_MOUSE
25209127	Sunrex EKB-10YA(SL) B-Silk USB KB-LVT8	KYB_MOUSE
25211011	Liteon SK-8861(JP) 2.4G KB-White8	KYB_MOUSE
25209162	Sunrex EKB-10YA(HB) W-Silk USB KB-LVT8	KYB_MOUSE
25209149	Sunrex EKB-10YA(CZ-SL) W-S USB KB-LVT8	KYB_MOUSE

<b>Fru P/N</b>	<b>Description</b>	<b>Basic Name</b>
25211009	Liteon SK-8861(BG) 2.4G KB-White8	KYB_MOUSE
25211002	Liteon SK-8861(ES) 2.4G KB-White8	KYB_MOUSE
25209130	Sunrex EKB-10YA(FR) B-Silk USB KB-LVT8	KYB_MOUSE
25209153	Sunrex EKB-10YA(Nordic) W-S USB KB-LVT8	KYB_MOUSE
25209161	Sunrex EKB-10YA(IT) W-Silk USB KB-LVT8	KYB_MOUSE
25209182	Liteon SK-8861(GB) 2.4G KB-Black8	KYB_MOUSE
25209172	Sunrex EKB-10YA(US-EU) W-S USB KB-LVT8	KYB_MOUSE
25209185	Liteon SK-8861(LA-AR) 2.4G KB-Black8	KYB_MOUSE
25209192	Liteon SK-8861(IT) 2.4G KB-Black8	KYB_MOUSE
25201068	Liteon LXH-SM-8825 W-Silk Mouse	KYB_MOUSE
25209155	Sunrex EKB-10YA(AR) W-Silk USB KB-LVT8	KYB_MOUSE
25209148	Sunrex EKB-10YA(TH) W-Silk USB KB-LVT8	KYB_MOUSE
25209159	Sunrex EKB-10YA(SP) W-Silk USB KB-LVT8	KYB_MOUSE
25211001	Liteon SK-8861(TR) 2.4G KB-White8	KYB_MOUSE
25209200	Liteon SK-8861(EN-FR) 2.4G KB-Black8	KYB_MOUSE
25209135	Sunrex EKB-10YA(JP) B-Silk USB KB-LVT8	KYB_MOUSE
25209128	Sunrex EKB-10YA(IT) B-Silk USB KB-LVT8	KYB_MOUSE
25211007	Liteon SK-8861(GR) 2.4G KB-White8	KYB_MOUSE
25209157	Sunrex EKB-10YA(GE) W-Silk USB KB-LVT8	KYB_MOUSE
25210998	Liteon SK-8861(SA) 2.4G KB-White8	KYB_MOUSE
25211014	Liteon SK-8861(BE-EN) 2.4G KB-White8	KYB_MOUSE
25210995	Liteon SK-8861(Nordic) 2.4G KB-White8	KYB_MOUSE
25203464	Liteon SM-8861(WW) Mouse Black	KYB_MOUSE
25211015	Liteon SK-8861(US-EU) 2.4G KB-White8	KYB_MOUSE
25211016	Liteon SM-8861(WW) 2.4G Mouse White	KYB_MOUSE
25209132	Sunrex EKB-10YA(HG) B-Silk USB KB-LVT8	KYB_MOUSE
25209123	Sunrex EKB-10YA(SW) B-Silk USB KB-LVT8	KYB_MOUSE
25209195	Liteon SK-8861(GR) 2.4G KB-Black8	KYB_MOUSE
25209111	Sunrex EKB-10YA(US) B-Silk USB KB-LVT8	KYB_MOUSE
25201322	Sunrex LXH-EMS-10ZA W-Silk Mouse	KYB_MOUSE
25209203	Liteon SK-8861(US-EU) 2.4G KB-Black8	KYB_MOUSE
25209116	Sunrex EKB-10YA(CZ-SL) B-S USB KB-LVT8	KYB_MOUSE
25211003	Liteon SK-8861(SL) 2.4G KB-White8	KYB_MOUSE
25209154	Sunrex EKB-10YA(LA) W-Silk USB KB-LVT8	KYB_MOUSE
25211004	Liteon SK-8861(IT) 2.4G KB-White8	KYB_MOUSE
25209145	Sunrex EKB-10YA(US) W-Silk USB KB-LVT8	KYB_MOUSE
25209170	Sunrex EKB-10YA(PT) W-Silk USB KB-LVT8	KYB_MOUSE
25209179	Liteon SK-8861(CS-SK) 2.4G KB-Black8	KYB_MOUSE
25209171	Sunrex EKB-10YA(BE-EN) W-S USB KB-LVT8	KYB_MOUSE

<b>Fru P/N</b>	<b>Description</b>	<b>Basic Name</b>
25209181	Liteon SK-8861(RU) 2.4G KB-Black8	KYB_MOUSE
25210987	Liteon SK-8861(US) 2.4G KB-White8	KYB_MOUSE
25209199	Liteon SK-8861(JP) 2.4G KB-Black8	KYB_MOUSE
25209180	Liteon SK-8861(US-IN) 2.4G KB-Black8	KYB_MOUSE
25210988	Liteon SK-8861(US-MY) 2.4G KB-White8	KYB_MOUSE
25211006	Liteon SK-8861(FR) 2.4G KB-White8	KYB_MOUSE
25209118	Sunrex EKB-10YA(RU) B-Silk USB KB-LVT8	KYB_MOUSE
25209115	Sunrex EKB-10YA(TH) B-Silk USB KB-LVT8	KYB_MOUSE
25210993	Liteon SK-8861(RU) 2.4G KB-White8	KYB_MOUSE
25209190	Liteon SK-8861(ES) 2.4G KB-Black8	KYB_MOUSE
25210992	Liteon SK-8861(US-IN) 2.4G KB-White8	KYB_MOUSE
25209131	Sunrex EKB-10YA(GK) B-Silk USB KB-LVT8	KYB_MOUSE
25209146	Primax KB4721(US) W-Silk USB KB-LVT8	KYB_MOUSE
25209167	Sunrex EKB-10YA(KR) W-Silk USB KB-LVT8	KYB_MOUSE
25210991	Liteon SK-8861(CS-SK) 2.4G KB-White8	KYB_MOUSE
25209121	Sunrex EKB-10YA(LA) B-Silk USB KB-LVT8	KYB_MOUSE
25210990	Liteon SK-8861(TH) 2.4G KB-White8	KYB_MOUSE
25209126	Sunrex EKB-10YA(SP) B-Silk USB KB-LVT8	KYB_MOUSE
25209196	Liteon SK-8861(HU) 2.4G KB-Black8	KYB_MOUSE
25209156	Sunrex EKB-10YA(SW) W-Silk USB KB-LVT8	KYB_MOUSE
25209136	Sunrex EKB-10YA(EN-FR) B-S USB KB-LVT8	KYB_MOUSE
25209164	Sunrex EKB-10YA(GK) W-Silk USB KB-LVT8	KYB_MOUSE
25209188	Liteon SK-8861(DE) 2.4G KB-Black8	KYB_MOUSE
25209184	Liteon SK-8861(LA) 2.4G KB-Black8	KYB_MOUSE
25209152	Sunrex EKB-10YA(UK) W-Silk USB KB-LVT8	KYB_MOUSE
25209175	Liteon SK-8861(US) 2.4G KB-Black8	KYB_MOUSE
25209165	Sunrex EKB-10YA(HG) W-Silk USB KB-LVT8	KYB_MOUSE
25209166	Sunrex EKB-10YA(BG) W-Silk USB KB-LVT8	KYB_MOUSE
25209117	Sunrex EKB-10YA(IN) B-Silk USB KB-LVT8	KYB_MOUSE
25210999	Liteon SK-8861(CH) 2.4G KB-White8	KYB_MOUSE
25209137	Sunrex EKB-10YA(PT) B-Silk USB KB-LVT8	KYB_MOUSE
25209186	Liteon SK-8861(SA) 2.4G KB-Black8	KYB_MOUSE
25209168	Sunrex EKB-10YA(JP) W-Silk USB KB-LVT8	KYB_MOUSE
25211013	Liteon SK-8861(PT) 2.4G KB-White8	KYB_MOUSE
25209160	Sunrex EKB-10YA(SL) W-Silk USB KB-LVT8	KYB_MOUSE
25209119	Sunrex EKB-10YA(UK) B-Silk USB KB-LVT8	KYB_MOUSE
25209187	Liteon SK-8861(CH) 2.4G KB-Black8	KYB_MOUSE
25209177	Liteon SK-8861(TW) 2.4G KB-Black8	KYB_MOUSE
25209122	Sunrex EKB-10YA(AR) B-Silk USB KB-LVT8	KYB_MOUSE

<b>Fru P/N</b>	<b>Description</b>	<b>Basic Name</b>
25209138	Sunrex EKB-10YA(BE-EN) B-S USB KB-LVT8	KYB_MOUSE
25209120	Sunrex EKB-10YA(Nordic) B-S USB KB-LVT8	KYB_MOUSE
25209147	Sunrex EKB-10YA(TW) W-Silk USB KB-LVT8	KYB_MOUSE
25209134	Sunrex EKB-10YA(KR) B-Silk USB KB-LVT8	KYB_MOUSE
25209193	Liteon SK-8861(IL) 2.4G KB-Black8	KYB_MOUSE
25209176	Liteon SK-8861(US-MY) 2.4G KB-Black8	KYB_MOUSE
25209139	Sunrex EKB-10YA(US-EU) B-S USB KB-LVT8	KYB_MOUSE
25209191	Liteon SK-8861(SL) 2.4G KB-Black8	KYB_MOUSE
25209197	Liteon SK-8861(BG) 2.4G KB-Black8	KYB_MOUSE
25209183	Liteon SK-8861(Nordic) 2.4G KB-Black8	KYB_MOUSE
25210996	Liteon SK-8861(LA) 2.4G KB-White8	KYB_MOUSE
25209129	Sunrex EKB-10YA(HB) B-Silk USB KB-LVT8	KYB_MOUSE
25209198	Liteon SK-8861(KR) 2.4G KB-Black8	KYB_MOUSE
25211012	Liteon SK-8861(EN-FR) 2.4G KB-White8	KYB_MOUSE
25209178	Liteon SK-8861(TH) 2.4G KB-Black8	KYB_MOUSE
25211010	Liteon SK-8861(KR) 2.4G KB-White8	KYB_MOUSE
25209169	Sunrex EKB-10YA(EN-FR) W-S USB KB-LVT8	KYB_MOUSE
25211008	Liteon SK-8861(HU) 2.4G KB-White8	KYB_MOUSE
25209158	Sunrex EKB-10YA(TR) W-Silk USB KB-LVT8	KYB_MOUSE
25210997	Liteon SK-8861(LA-AR) 2.4G KB-White8	KYB_MOUSE
25210989	Liteon SK-8861(TW) 2.4G KB-White8	KYB_MOUSE
25211005	Liteon SK-8861(IL) 2.4G KB-White8	KYB_MOUSE
25209150	Sunrex EKB-10YA(IN) W-Silk USB KB-LVT8	KYB_MOUSE
25209163	Sunrex EKB-10YA(FR) W-Silk USB KB-LVT8	KYB_MOUSE
25209133	Sunrex EKB-10YA(BG) B-Silk USB KB-LVT8	KYB_MOUSE
25211000	Liteon SK-8861(DE) 2.4G KB-White8	KYB_MOUSE
25209124	Sunrex EKB-10YA(GE) B-Silk USB KB-LVT8	KYB_MOUSE
25209202	Liteon SK-8861(BE-EN) 2.4G KB-Black8	KYB_MOUSE
25209189	Liteon SK-8861(TR) 2.4G KB-Black8	KYB_MOUSE
25209125	Sunrex EKB-10YA(TR) B-Silk USB KB-LVT8	KYB_MOUSE
25209114	Sunrex EKB-10YA(TW) B-Silk USB KB-LVT8	KYB_MOUSE
31503355	LX(ASAP) 1.0M C5 South Africa power cord	LINECORD
31503424	Volex 1.0M C5 2pin Japan power cord	LINECORD
31503356	LX(ASAP) 1.0M C5 Argentina power cord	LINECORD
31503423	Longwell 1.0M C5 2pin Japan power cord	LINECORD
31503353	LX(ASAP) 1.0M C5 India power cord	LINECORD
31503358	LX(ASAP) 1.0M C5 Korea power cord	LINECORD
31503354	LX(ASAP) 1.0M C5 Taiwan power cord	LINECORD
31503362	LX(ASAP) 1.0M C5 Israel power cord	LINECORD

Fru P/N	Description	Basic Name
31503352	LX(ASAP) 1.0M C5 UK power cord	LINECORD
31503359	LX(ASAP) 1.0M C5 Italy power cord	LINECORD
31503425	LS 1.0M C5 2pin Japan power cord	LINECORD
31503360	LX(ASAP) 1.0M C5 Danmark power cord	LINECORD
31503357	LX(ASAP) 1.0M C5 Brazil power cord	LINECORD
5L60J33143	lux 0014+H03VV-F 0.75/3C+0011	LINECORD
31503361	LX(ASAP) 1.0M C5 Switzerland power cord	LINECORD
00XD111	CAMERA 720P	MECH_ASM
00XD109	MB Shielding, HDMI-IN, C51	MECH_ASM
00XD108	MB Shielding, nHDMI IN, C51	MECH_ASM
00XD606	MAINFRAME,SSD NT IPS C41	MECH_ASM
00XD602	MAINFRAME,SSD NT LG C41	MECH_ASM
00XD601	LG IPS Panel,White,T,C41	MECH_ASM
00XD596	SAMSUNG Panel,Black,T,C41	MECH_ASM
00XD608	FRONT BEZEL,NT Black C41	MECH_ASM
00XD590	ODD Bezel White,C41	MECH_ASM
00XD586	Back CVR, nHDMI In, White,C41	MECH_ASM
00XD588	Back CVR, HDMI IN, White,C41	MECH_ASM
00XD585	Back CVR, nHDMI In, Black,C41	MECH_ASM
00XD607	MAINFRAME,Non SSD NT IPS C41	MECH_ASM
00XD604	MAINFRAME,SSD NT SAM C41	MECH_ASM
00XD603	MAINFRAME,Non SSD NT LG C41	MECH_ASM
00XD597	SAMSUNG Panel,White,T,C41	MECH_ASM
00XD609	FRONT BEZEL,NT White C41	MECH_ASM
00XD599	AUO Panel,White,T,C41	MECH_ASM
00XD612	SIDE IO COVER,WHITE,C41	MECH_ASM
00XD595	LG Panel,White,T,C41	MECH_ASM
00XD610	LCD Panel,NON TOUCH,C41	MECH_ASM
00XD592	MB Shielding, HDMI-IN, C41	MECH_ASM
00XD611	SIDE IO COVER,BLACK,C41	MECH_ASM
00XD591	MB Shielding, nHDMI IN, C41	MECH_ASM
00XD115	POWER BOARD	MECH_ASM
00XD104	HDD CAGE	MECH_ASM
00XD600	LG IPS Panel,Black,T,C41	MECH_ASM
00XD589	ODD Bezel Black,C41	MECH_ASM
00XD605	MAINFRAME,Non SSD NT SAM C41	MECH_ASM
00XD594	LG Panel,Black,T,C41	MECH_ASM
00XD598	AUO Panel,Black,T,C41	MECH_ASM
00XD587	Back CVR, HDMI IN, Black,C41	MECH_ASM

<b>Fru P/N</b>	<b>Description</b>	<b>Basic Name</b>
1100986	HMT41GS6BFR8A-PB 8GB DDR3L 1600 Sodimm	MEMORY
1100635	MT16KTF1G64HZ-1G6E1 8G D3L-1600S MEMORY	MEMORY
1100957	MT8KTF51264HZ-1G6E1 4GB 1600 Sodimm	MEMORY
03T7117	SODIMM,4G,DDR3L,1600	MEMORY
1100985	HMT451S6BFR8A-PB 4GB DDR3L 1600 Sodimm	MEMORY
1100983	M471B5674QH0-YK0 2GB DDR3L 1600 Sodimm	MEMORY
1100956	MT4KTF25664HZ-1G6E1 2GB 1600 Sodimm	MEMORY
03T7116	SODIMM,2G,DDR3L,1600	MEMORY
1101012	Mic_R D9QBJ ?8GB D3L-1600 Sodimm	MEMORY
03T7118	SODIMM,8G,DDR3L,1600	MEMORY
00PC593	Doking M680B W-Silk USB MC WHT	MOUSE
00PC592	Doking M680B B-Silk USB MC BLK	MOUSE
25200528	Liteon LXH-SM-8825 B-Silk Mouse	MOUSE
25200530	Sunrex LXH-EMS-10ZA B-Silk Mouse	MOUSE
00FC442	SMD,DT,SATA,9.5mm,x8,w/o bezel	OPT_DRIVE
00XD170	RAM SHIELDING,C51	SHIELD
00XD593	Speaker ,C41	SPEAKERINT
00JT081	32G,M.2,2242,SATA6G,LTN,STD	SSD_ASM
00XD583	HINGE STAND,DEEP SILVER	STAND
00XD584	HINGE STAND,LIGHT SILVER	STAND
00XD092	BASE STAND,DEEP SILVER	STAND
00XD093	BASE STAND,LIGHT SILVER	STAND
11203056	TNI Cabo converter board	SUBCARD
00JT461	Wireless,CMB,CBT,43162V2	WIRELESS
00JT527	Wireless,CMB,LTN,8821AE AGN	WIRELESS
00JT454	Wireless,CMB,LTN,8821AE	WIRELESS
00JT529	Wireless,CMB,LTN,8821AE Indo	WIRELESS

## Chapter 10. FRU lists

This chapter lists the information on the field replaceable units (FRUs) for ideacentre All-In-One 300–22ISU desktop computer.

**Attention:** Be sure to read and understand all the safety information before replacing any FRUs.

**Notes:** FRUs that have a 1 or 2 in the CRU column are Customer Replaceable Units (CRUs).

- **1**– identifies parts that are fairly simple to replace, requiring few or no tools.
- **2**– identifies parts that are slightly more difficult to replace.
- **N**– identifies parts that are not to be replaced by the customer.

Fru P/N	Description	Basic Name
54Y8917	CRU,CMN 90W Common adapter	AC_ADAPTER
54Y8966	AC_ADAPTER,90W,100-240V,3P	AC_ADAPTER
54Y8925	AC_ADAPTER,120W,100-240V,3P	AC_ADAPTER
00XD116	WLAN,AIO 300-23ACL	ANTENNA
00UW089	MB,C_3855U,UMA,WIN DPK	BDPLANAR
00UW090	I5-6200U,UMA,HDMI IN,NO DPK	BDPLANAR
00UW091	I5-6200U,UMA,HDMI IN,WIN DPK	BDPLANAR
00UW092	I3-6100U,UMA,HDMI IN,NO DPK	BDPLANAR
00UW100	MB,P_4405U,GF920A 1G,NO DPK	BDPLANAR
00UW098	MB,I3-6100U,GF920A 1G,NO DPK	BDPLANAR
00UW099	MB,I3-6100U,GF920A 1G,WIN DPK	BDPLANAR
00UW103	MB,C_3855U,GF920A 1G,WIN DPK	BDPLANAR
00UW104	MB,I5-6200U,GF920A 2G,NO DPK	BDPLANAR
00UW105	MB,I5-6200U,GF920A 2G,WIN DPK	BDPLANAR
00UW101	MB,P_4405U,GF920A 1G,WIN DPK	BDPLANAR
00UW102	MB,C_3855U,GF920A 1G,NO DPK	BDPLANAR
00UW109	MB,P_4405U,GF920A 2G,WIN DPK	BDPLANAR
00UW106	MB,I3-6100U,GF920A 2G,NO DPK	BDPLANAR
00UW107	MB,I3-6100U,GF920A 2G,WIN DPK	BDPLANAR
00UW108	MB,P_4405U,GF920A 2G,NO DPK	BDPLANAR
00UW084	MB,I3-6100U,UMA,NO DPK	BDPLANAR
00UW086	MB,P_4405U,UMA,NO DPK	BDPLANAR
00UW085	MB,I3-6100U,UMA,WIN DPK	BDPLANAR
00UW082	MB,I5-6200U,UMA,NO DPK	BDPLANAR
00UW087	MB,P_4405U,UMA,WIN DPK	BDPLANAR
00UW088	MB,C_3855U,UMA,NO DPK	BDPLANAR
00UW083	MB,I5-6200U,UMA,WIN DPK	BDPLANAR

Fru P/N	Description	Basic Name
00UW093	I3-6100U,UMA,HDMI IN,WIN DPK	BDPLANAR
00UW094	P_4405U,UMA,HDMI IN,NO DPK	BDPLANAR
00UW095	P_4405U,UMA,HDMI IN,WIN DPK	BDPLANAR
00UW096	C_3855U,UMA,HDMI IN,NO DPK	BDPLANAR
00UW097	C_3855U,UMA,HDMI IN,WIN DPK	BDPLANAR
00UW111	MB,C_3855U,GF920A 2G,WIN DPK	BDPLANAR
00UW110	MB,C_3855U,GF920A 2G,NO DPK	BDPLANAR
31038885	LW BLK 1.0m Taiwan C5power cord (R)	CABLE
31049498	Volex 1.0M C5 KOR power cord	CABLE
00XD574	CVTER_MB_C51	CABLE
31049499	Volex 1.0M C5 TW power cord	CABLE
31033857	LW BLK1.0m3wire ULCSA power cord(R)	CABLE
31035828	LW BLK 1.0m Brazilpower cord (R)	CABLE
31049501	Volex 1.0M C5 SA power cord	CABLE
00XD617	CVTER_MB_C41	CABLE
31049502	Volex 1.0M C5 ISI power cord	CABLE
31039103	LW BLK 1.0m Switzerland C5power cord (R)	CABLE
00XD616	CVTER_PANEL_LG_IPS,C41	CABLE
31049504	Volex 1.0M C5 ITY power cord	CABLE
31039100	LW BLK 1.0m Argentina C5power cord (R)	CABLE
31035395	LW BLK 1.0m Indiapower cord (R)	CABLE
31033858	VL BLK1.0m3wire ULCSA power cord(R)	CABLE
31049496	Volex 1.0M C5 UK power cord	CABLE
31049500	Volex 1.0M C5 ANZ power cord	CABLE
00XD620	LVDS_LG_IPS,C41	CABLE
31049517	LX(ASAP) 1.0M C5 UL power cord	CABLE
31039105	LW BLK 1.0m SA C5power cord (R)	CABLE
00XD613	CVTER_PANEL_LGE,C41	CABLE
00XD618	LVDS_LG,C41	CABLE
31049518	LX(ASAP) 1.0M C5 EU power cord	CABLE
00XD619	LVDS_Samsung_AUO,C41	CABLE
31049497	Volex 1.0M C5 EU power cord	CABLE
31039101	LW BLK 1.0m Denmark C5power cord (R)	CABLE
31039104	LW BLK 1.0m Italy C5power cord (R)	CABLE
31035397	LW BLK 1.0m ANZpower cord (R)	CABLE
31035396	LW BLK 1.0m UKpower cord (R)	CABLE
31045147	LX(ASAP) 1.0M C5 CCC power cord	CABLE
31039106	LW BLK 1.0m Korea C5power cord (R)	CABLE
31032953	GS BLK1.0m3wire CCC power cord(R)	CABLE

Fru P/N	Description	Basic Name
00XD169	POWER SWITCH CABLE,C51	CABLE
31049520	LX(ASAP) 1.0M C5 ANZ power cord	CABLE
00XD105	SATA_HDD_ODD_Power	CABLE
31049508	Volex 1.0M C5 SWI power cord	CABLE
31049507	Volex 1.0M C5 LA power cord	CABLE
31039107	LW BLK 1.0m Israel C5power cord (R)	CABLE
31049505	Volex 1.0M C5 BR power cord	CABLE
00XD614	CVTER_PANEL_SAMSUNG,C41	CABLE
31049503	Volex 1.0M C5 DEN power cord	CABLE
31035332	LW BLK 1.0m VDEpower cord (R)	CABLE
00XD615	CVTER_PANEL_AUO,C41	CABLE
01AH311	AVC C5130 720P 1MIC Z CAM	CAMERA
00PC416	Bison CM 720P 5838 Hi165 12D 1DM	CAMERA
00PC412	AVC CM 720P 5838 Hi165 12D 1DM	CAMERA
00PC420	LT CM 720P 5840 Hi162C 12D 1DM	CAMERA
01AJ763	Switch board with HDMI IN C51	CARDPOP
01AJ750	Swith Board C5105	CARDPOP
00XD579	Slider Cover Black,nHDMI In,C41	COVER
00XD580	Slider Cover White,nHDMI In,C41	COVER
00XD581	Slider Cover Black,HDMI In,C41	COVER
00XD582	Slider Cover White,HDMI In,C41	COVER
18200835	AUO M215HTN01.1	DISPLAY
00PC202	DT_KYB,DOK5321(US)W-Silk USB,US	DT_KYB
00PC201	DT_KYB,DOK5321(US)B-Silk USB,US	DT_KYB
00PC723	FAN 90x15mm Sysfan for S5130	FAN
16200689	ST Grenada BP2 ST2000DM001 2TB HDD	HDD_ASM
16200688	ST Grenada BP2 ST1000DM003 1TB HDD	HDD_ASM
16200544	WDXL500A WD5000AAKX-08U6AA0 500G HDD-LH	HDD_ASM
00PC554	SSHS,1TB,7200,DT3,SATA3,STD	HDD_ASM
16200514	TSB Mars 4K 2TB DT01ACA200 -LH	HDD_ASM
45K0629	HDD,500G,7200,DT3,SATA3,STD	HDD_ASM
45K0623	HDD,1TB,7200,DT3,SATA3,STD	HDD_ASM
16200613	WD XL1000B WD10EZEX-08M2NA0 1TB HDD	HDD_ASM
16200674	ST Pharaoh 4K Non-MC ST500DM002 500GHDD	HDD_ASM
16200513	TSB Mars 4K 1TB DT01ACA100 -LH	HDD_ASM
16200512	TSB Mars 4K 500G DT01ACA050 -LH	HDD_ASM
45K0625	HDD,2TB,7200,DT3,SATA3,STD	HDD_ASM
00XD075	HEATSINK Intel UMA	HEATSINK
00XD074	HEATSINK Intel DIS	HEATSINK

<b>Fru P/N</b>	<b>Description</b>	<b>Basic Name</b>
25210994	Liteon SK-8861(GB) 2.4G KB-White8	KYB_MOUSE
25209112	Primax KB4721(US) B-Silk USB KB-LVT8	KYB_MOUSE
25209201	Liteon SK-8861(PT) 2.4G KB-Black8	KYB_MOUSE
25209194	Liteon SK-8861(FR) 2.4G KB-Black8	KYB_MOUSE
25209151	Sunrex EKB-10YA(RU) W-Silk USB KB-LVT8	KYB_MOUSE
25209127	Sunrex EKB-10YA(SL) B-Silk USB KB-LVT8	KYB_MOUSE
25211011	Liteon SK-8861(JP) 2.4G KB-White8	KYB_MOUSE
25209162	Sunrex EKB-10YA(HB) W-Silk USB KB-LVT8	KYB_MOUSE
25209149	Sunrex EKB-10YA(CZ-SL) W-S USB KB-LVT8	KYB_MOUSE
25211009	Liteon SK-8861(BG) 2.4G KB-White8	KYB_MOUSE
25211002	Liteon SK-8861(ES) 2.4G KB-White8	KYB_MOUSE
25209130	Sunrex EKB-10YA(FR) B-Silk USB KB-LVT8	KYB_MOUSE
25209153	Sunrex EKB-10YA(Nordic) W-S USB KB-LVT8	KYB_MOUSE
25209161	Sunrex EKB-10YA(IT) W-Silk USB KB-LVT8	KYB_MOUSE
25209182	Liteon SK-8861(GB) 2.4G KB-Black8	KYB_MOUSE
25209172	Sunrex EKB-10YA(US-EU) W-S USB KB-LVT8	KYB_MOUSE
25209185	Liteon SK-8861(LA-AR) 2.4G KB-Black8	KYB_MOUSE
25209192	Liteon SK-8861(IT) 2.4G KB-Black8	KYB_MOUSE
25201068	Liteon LXH-SM-8825 W-Silk Mouse	KYB_MOUSE
25209155	Sunrex EKB-10YA(AR) W-Silk USB KB-LVT8	KYB_MOUSE
25209148	Sunrex EKB-10YA(TH) W-Silk USB KB-LVT8	KYB_MOUSE
25209159	Sunrex EKB-10YA(SP) W-Silk USB KB-LVT8	KYB_MOUSE
25211001	Liteon SK-8861(TR) 2.4G KB-White8	KYB_MOUSE
25209200	Liteon SK-8861(EN-FR) 2.4G KB-Black8	KYB_MOUSE
25209135	Sunrex EKB-10YA(JP) B-Silk USB KB-LVT8	KYB_MOUSE
25209128	Sunrex EKB-10YA(IT) B-Silk USB KB-LVT8	KYB_MOUSE
25211007	Liteon SK-8861(GR) 2.4G KB-White8	KYB_MOUSE
25209157	Sunrex EKB-10YA(GE) W-Silk USB KB-LVT8	KYB_MOUSE
25210998	Liteon SK-8861(SA) 2.4G KB-White8	KYB_MOUSE
25211014	Liteon SK-8861(BE-EN) 2.4G KB-White8	KYB_MOUSE
25210995	Liteon SK-8861(Nordic) 2.4G KB-White8	KYB_MOUSE
25203464	Liteon SM-8861(WW) Mouse Black	KYB_MOUSE
25211015	Liteon SK-8861(US-EU) 2.4G KB-White8	KYB_MOUSE
25211016	Liteon SM-8861(WW) 2.4G Mouse White	KYB_MOUSE
25209132	Sunrex EKB-10YA(HG) B-Silk USB KB-LVT8	KYB_MOUSE
25209123	Sunrex EKB-10YA(SW) B-Silk USB KB-LVT8	KYB_MOUSE
25209195	Liteon SK-8861(GR) 2.4G KB-Black8	KYB_MOUSE
25209111	Sunrex EKB-10YA(US) B-Silk USB KB-LVT8	KYB_MOUSE
25201322	Sunrex LXH-EMS-10ZA W-Silk Mouse	KYB_MOUSE

<b>Fru P/N</b>	<b>Description</b>	<b>Basic Name</b>
25209203	Liteon SK-8861(US-EU) 2.4G KB-Black8	KYB_MOUSE
25209116	Sunrex EKB-10YA(CZ-SL) B-S USB KB-LVT8	KYB_MOUSE
25211003	Liteon SK-8861(SL) 2.4G KB-White8	KYB_MOUSE
25209154	Sunrex EKB-10YA(LA) W-Silk USB KB-LVT8	KYB_MOUSE
25211017	Liteon SM-8861 2.4G Mouse(No Battery)WTE	KYB_MOUSE
25211004	Liteon SK-8861(IT) 2.4G KB-White8	KYB_MOUSE
25209145	Sunrex EKB-10YA(US) W-Silk USB KB-LVT8	KYB_MOUSE
25211018	Liteon SM-8861 2.4G Mouse(MY) White	KYB_MOUSE
25209170	Sunrex EKB-10YA(PT) W-Silk USB KB-LVT8	KYB_MOUSE
25209179	Liteon SK-8861(CS-SK) 2.4G KB-Black8	KYB_MOUSE
25209171	Sunrex EKB-10YA(BE-EN) W-S USB KB-LVT8	KYB_MOUSE
25209181	Liteon SK-8861(RU) 2.4G KB-Black8	KYB_MOUSE
25210987	Liteon SK-8861(US) 2.4G KB-White8	KYB_MOUSE
25209199	Liteon SK-8861(JP) 2.4G KB-Black8	KYB_MOUSE
25209180	Liteon SK-8861(US-IN) 2.4G KB-Black8	KYB_MOUSE
25210988	Liteon SK-8861(US-MY) 2.4G KB-White8	KYB_MOUSE
25211006	Liteon SK-8861(FR) 2.4G KB-White8	KYB_MOUSE
25203466	Liteon SM-8861 Mouse(MY) Black	KYB_MOUSE
25209118	Sunrex EKB-10YA(RU) B-Silk USB KB-LVT8	KYB_MOUSE
25211019	Liteon SM-8861 2.4G Mouse(JP) White	KYB_MOUSE
25209115	Sunrex EKB-10YA(TH) B-Silk USB KB-LVT8	KYB_MOUSE
25210993	Liteon SK-8861(RU) 2.4G KB-White8	KYB_MOUSE
25209190	Liteon SK-8861(ES) 2.4G KB-Black8	KYB_MOUSE
25210992	Liteon SK-8861(US-IN) 2.4G KB-White8	KYB_MOUSE
25209131	Sunrex EKB-10YA(GK) B-Silk USB KB-LVT8	KYB_MOUSE
25209146	Primax KB4721(US) W-Silk USB KB-LVT8	KYB_MOUSE
25209167	Sunrex EKB-10YA(KR) W-Silk USB KB-LVT8	KYB_MOUSE
25210991	Liteon SK-8861(CS-SK) 2.4G KB-White8	KYB_MOUSE
25209121	Sunrex EKB-10YA(LA) B-Silk USB KB-LVT8	KYB_MOUSE
25210990	Liteon SK-8861(TH) 2.4G KB-White8	KYB_MOUSE
25209126	Sunrex EKB-10YA(SP) B-Silk USB KB-LVT8	KYB_MOUSE
25209196	Liteon SK-8861(HU) 2.4G KB-Black8	KYB_MOUSE
25209156	Sunrex EKB-10YA(SW) W-Silk USB KB-LVT8	KYB_MOUSE
25205773	Liteon SM-8861(JP) Mouse-Black	KYB_MOUSE
25209136	Sunrex EKB-10YA(EN-FR) B-S USB KB-LVT8	KYB_MOUSE
25209164	Sunrex EKB-10YA(GK) W-Silk USB KB-LVT8	KYB_MOUSE
25209188	Liteon SK-8861(DE) 2.4G KB-Black8	KYB_MOUSE
25209184	Liteon SK-8861(LA) 2.4G KB-Black8	KYB_MOUSE
25209152	Sunrex EKB-10YA(UK) W-Silk USB KB-LVT8	KYB_MOUSE

<b>Fru P/N</b>	<b>Description</b>	<b>Basic Name</b>
25209175	Liteon SK-8861(US) 2.4G KB-Black8	KYB_MOUSE
25209165	Sunrex EKB-10YA(HG) W-Silk USB KB-LVT8	KYB_MOUSE
25209166	Sunrex EKB-10YA(BG) W-Silk USB KB-LVT8	KYB_MOUSE
25209117	Sunrex EKB-10YA(IN) B-Silk USB KB-LVT8	KYB_MOUSE
25210999	Liteon SK-8861(CH) 2.4G KB-White8	KYB_MOUSE
25209137	Sunrex EKB-10YA(PT) B-Silk USB KB-LVT8	KYB_MOUSE
25209186	Liteon SK-8861(SA) 2.4G KB-Black8	KYB_MOUSE
25209168	Sunrex EKB-10YA(JP) W-Silk USB KB-LVT8	KYB_MOUSE
25211013	Liteon SK-8861(PT) 2.4G KB-White8	KYB_MOUSE
25209160	Sunrex EKB-10YA(SL) W-Silk USB KB-LVT8	KYB_MOUSE
25209119	Sunrex EKB-10YA(UK) B-Silk USB KB-LVT8	KYB_MOUSE
25209187	Liteon SK-8861(CH) 2.4G KB-Black8	KYB_MOUSE
25209177	Liteon SK-8861(TW) 2.4G KB-Black8	KYB_MOUSE
25209122	Sunrex EKB-10YA(AR) B-Silk USB KB-LVT8	KYB_MOUSE
25209138	Sunrex EKB-10YA(BE-EN) B-S USB KB-LVT8	KYB_MOUSE
25209120	Sunrex EKB-10YA(Nordic) B-S USB KB-LVT8	KYB_MOUSE
25209147	Sunrex EKB-10YA(TW) W-Silk USB KB-LVT8	KYB_MOUSE
25209134	Sunrex EKB-10YA(KR) B-Silk USB KB-LVT8	KYB_MOUSE
25209193	Liteon SK-8861(IL) 2.4G KB-Black8	KYB_MOUSE
25209176	Liteon SK-8861(US-MY) 2.4G KB-Black8	KYB_MOUSE
25209139	Sunrex EKB-10YA(US-EU) B-S USB KB-LVT8	KYB_MOUSE
25209191	Liteon SK-8861(SL) 2.4G KB-Black8	KYB_MOUSE
25209183	Liteon SK-8861(Nordic) 2.4G KB-Black8	KYB_MOUSE
25209197	Liteon SK-8861(BG) 2.4G KB-Black8	KYB_MOUSE
25210996	Liteon SK-8861(LA) 2.4G KB-White8	KYB_MOUSE
25209129	Sunrex EKB-10YA(HB) B-Silk USB KB-LVT8	KYB_MOUSE
25209198	Liteon SK-8861(KR) 2.4G KB-Black8	KYB_MOUSE
25211012	Liteon SK-8861(EN-FR) 2.4G KB-White8	KYB_MOUSE
25203465	Liteon SM-8861 Mouse(No Battery) Black	KYB_MOUSE
25209178	Liteon SK-8861(TH) 2.4G KB-Black8	KYB_MOUSE
25211010	Liteon SK-8861(KR) 2.4G KB-White8	KYB_MOUSE
25209169	Sunrex EKB-10YA(EN-FR) W-S USB KB-LVT8	KYB_MOUSE
25211008	Liteon SK-8861(HU) 2.4G KB-White8	KYB_MOUSE
25209158	Sunrex EKB-10YA(TR) W-Silk USB KB-LVT8	KYB_MOUSE
25210997	Liteon SK-8861(LA-AR) 2.4G KB-White8	KYB_MOUSE
25210989	Liteon SK-8861(TW) 2.4G KB-White8	KYB_MOUSE
25211005	Liteon SK-8861(IL) 2.4G KB-White8	KYB_MOUSE
25209150	Sunrex EKB-10YA(IN) W-Silk USB KB-LVT8	KYB_MOUSE
25209163	Sunrex EKB-10YA(FR) W-Silk USB KB-LVT8	KYB_MOUSE

<b>Fru P/N</b>	<b>Description</b>	<b>Basic Name</b>
25209133	Sunrex EKB-10YA(BG) B-Silk USB KB-LVT8	KYB_MOUSE
25211000	Liteon SK-8861(DE) 2.4G KB-White8	KYB_MOUSE
25209124	Sunrex EKB-10YA(GE) B-Silk USB KB-LVT8	KYB_MOUSE
25209202	Liteon SK-8861(BE-EN) 2.4G KB-Black8	KYB_MOUSE
25209189	Liteon SK-8861(TR) 2.4G KB-Black8	KYB_MOUSE
25209125	Sunrex EKB-10YA(TR) B-Silk USB KB-LVT8	KYB_MOUSE
25209114	Sunrex EKB-10YA(TW) B-Silk USB KB-LVT8	KYB_MOUSE
31503355	LX(ASAP) 1.0M C5 South Africa power cord	LINECORD
31503424	Volex 1.0M C5 2pin Japan power cord	LINECORD
31503356	LX(ASAP) 1.0M C5 Argentina power cord	LINECORD
31503423	Longwell 1.0M C5 2pin Japan power cord	LINECORD
31503353	LX(ASAP) 1.0M C5 India power cord	LINECORD
31503358	LX(ASAP) 1.0M C5 Korea power cord	LINECORD
31503354	LX(ASAP) 1.0M C5 Taiwan power cord	LINECORD
31503362	LX(ASAP) 1.0M C5 Israel power cord	LINECORD
31503352	LX(ASAP) 1.0M C5 UK power cord	LINECORD
31503359	LX(ASAP) 1.0M C5 Italy power cord	LINECORD
31503425	LS 1.0M C5 2pin Japan power cord	LINECORD
31503360	LX(ASAP) 1.0M C5 Danmark power cord	LINECORD
31503357	LX(ASAP) 1.0M C5 Brazil power cord	LINECORD
5L60J33143	lux 0014+H03VV-F 0.75/3C+0011	LINECORD
31503361	LX(ASAP) 1.0M C5 Switzerland power cord	LINECORD
00XD111	CAMERA 720P	MECH_ASM
00XD109	MB Shielding, HDMI-IN, C51	MECH_ASM
00XD108	MB Shielding, nHDMI IN, C51	MECH_ASM
00XD601	LG IPS Panel,White,T,C41	MECH_ASM
00XD596	SAMSUNG Panel,Black,T,C41	MECH_ASM
00XD608	FRONT BEZEL,NT Black C41	MECH_ASM
00XD590	ODD Bezel White,C41	MECH_ASM
00XD586	Back CVR, nHDMI In, White,C41	MECH_ASM
00XD588	Back CVR, HDMI IN, White,C41	MECH_ASM
00XD585	Back CVR, nHDMI In, Black,C41	MECH_ASM
00XD607	MAINFRAME,Non SSD NT IPS C41	MECH_ASM
00XD603	MAINFRAME,Non SSD NT LG C41	MECH_ASM
00XD597	SAMSUNG Panel,White,T,C41	MECH_ASM
00XD609	FRONT BEZEL,NT White C41	MECH_ASM
00XD599	AUO Panel,White,T,C41	MECH_ASM
00XD612	SIDE IO COVER,WHITE,C41	MECH_ASM
00XD595	LG Panel,White,T,C41	MECH_ASM

<b>Fru P/N</b>	<b>Description</b>	<b>Basic Name</b>
00XD592	MB Shielding, HDMI-IN, C41	MECH_ASM
00XD611	SIDE IO COVER,BLACK,C41	MECH_ASM
00XD591	MB Shielding, nHDMI IN, C41	MECH_ASM
00XD115	POWER BOARD	MECH_ASM
00XD651	LCD Panel,NON TOUCH,C4130	MECH_ASM
00XD104	HDD CAGE	MECH_ASM
00XD600	LG IPS Panel,Black,T,C41	MECH_ASM
00XD589	ODD Bezel Black,C41	MECH_ASM
00XD605	MAINFRAME,Non SSD NT SAM C41	MECH_ASM
00XD594	LG Panel,Black,T,C41	MECH_ASM
00XD598	AUO Panel,Black,T,C41	MECH_ASM
00XD587	Back CVR, HDMI IN, Black,C41	MECH_ASM
01EF071	IPS Panel,White,T,C4	MECH_ASM
01EF069	TN Panel,White,T,C4	MECH_ASM
01EF072	IPS Panel,Black,T,C4	MECH_ASM
01EF070	TN Panel,Black,T,C4	MECH_ASM
03T7413	4G,SODIMM,DDR4,2133MHz	MEMORY
03T7414	8G,SODIMM,DDR4,2133MHz	MEMORY
00PC593	Doking M680B W-Silk USB MC WHT	MOUSE
00PC592	Doking M680B B-Silk USB MC BLK	MOUSE
25200528	Liteon LXH-SM-8825 B-Silk Mouse	MOUSE
25200530	Sunrex LXH-EMS-10ZA B-Silk Mouse	MOUSE
00FC442	SMD,DT,SATA,9.5mm,x8,w/o bezel	OPT_DRIVE
00XD170	RAM SHIELDING,C51	SHIELD
00XD593	Speaker ,C41	SPEAKERINT
00XD583	HINGE STAND,DEEP SILVER	STAND
00XD584	HINGE STAND,LIGHT SILVER	STAND
00XD092	BASE STAND,DEEP SILVER	STAND
00XD093	BASE STAND,LIGHT SILVER	STAND
11203056	TNI Cabo converter board	SUBCARD
00JT507	Wireless,CMB,IN,3165 ac Ind	WIRELESS
00JT497	Wireless,CMB,IN,3165 ac	WIRELESS
00JT454	Wireless,CMB,LTN,8821AE	WIRELESS

## Chapter 11. FRU lists

This chapter lists the information on the field replaceable units (FRUs) for ideacentre All-In-One 300–23ACL desktop computer.

**Attention:** Be sure to read and understand all the safety information before replacing any FRUs.

**Notes:** FRUs that have a 1 or 2 in the CRU column are Customer Replaceable Units (CRUs).

- **1**– identifies parts that are fairly simple to replace, requiring few or no tools.
- **2**– identifies parts that are slightly more difficult to replace.
- **N**– identifies parts that are not to be replaced by the customer.

Fru P/N	Description	Basic Name
54Y8917	CRU,CMN 90W Common adapter	AC_ADAPTER
54Y8966	AC_ADAPTER,90W,100-240V,3P	AC_ADAPTER
54Y8925	AC_ADAPTER,120W,100-240V,3P	AC_ADAPTER
00XD116	WLAN,AIO 300-23ACL	ANTENNA
00XG126	MB,A8,2G,HDMI IN,NO DPK	BDPLANAR
00XG125	MB,A8,2G,HDMI IN,WIN DPK	BDPLANAR
00XG069	MB,E2,1G,HDMI OUT,WIN DPK	BDPLANAR
00XG064	MB,A8,UMA,HDMI IN,NO DPK	BDPLANAR
00XG061	MB,A6,UMA,HDMI IN,WIN DPK	BDPLANAR
00XG062	MB,A6,UMA,HDMI IN,NO DPK	BDPLANAR
00XG063	MB,A8,UMA,HDMI IN,WIN DPK	BDPLANAR
00XG073	MB,A4,UMA,HDMI OUT,WIN DPK	BDPLANAR
00XG072	MB,A6,2G,HDMI OUT,NO DPK	BDPLANAR
00XG068	MB,E2,UMA,HDMI OUT,NO DPK	BDPLANAR
00XG065	MB,A4,UMA,HDMI IN,WIN DPK	BDPLANAR
00XG066	MB,A4,UMA,HDMI IN,NO DPK	BDPLANAR
00XG071	MB,A6,2G,HDMI OUT,WIN DPK	BDPLANAR
00XG067	MB,E2,UMA,HDMI OUT,WIN DPK	BDPLANAR
00XG079	MB,A4,1G,HDMI OUT,WIN DPK	BDPLANAR
00XG075	MB,A6,UMA,HDMI OUT,WIN DPK	BDPLANAR
00XG074	MB,A4,UMA,HDMI OUT,NO DPK	BDPLANAR
00XG080	MB,A4,1G,HDMI OUT,NO DPK	BDPLANAR
00XG078	MB,A8,2G,HDMI OUT,NO DPK	BDPLANAR
00XG070	MB,E2,1G,HDMI OUT,NO DPK	BDPLANAR
00XG077	MB,A8,2G,HDMI OUT,WIN DPK	BDPLANAR
00XG076	MB,A6,UMA,HDMI OUT,NO DPK	BDPLANAR
31038885	LW BLK1.0m Taiwan C5power cord(R)	CABLE

<b>Fru P/N</b>	<b>Description</b>	<b>Basic Name</b>
00XD575	LVDS_LG,C51	CABLE
31049498	Volex 1.0M C5 KOR power cord	CABLE
00XD574	CVTER_MB_C51	CABLE
31049499	Volex 1.0M C5 TW power cord	CABLE
00XD576	LVDS_Samsung,C51	CABLE
31033857	LW BLK1.0m3wire ULCSA power cord(R)	CABLE
31035828	LW BLK1.0m Brazilpower cord(R)	CABLE
31049501	Volex 1.0M C5 SA power cord	CABLE
00XD617	CVTER_MB_C41	CABLE
31049502	Volex 1.0M C5 ISI power cord	CABLE
31039103	LW BLK1.0m Switzerland C5power cord(R)	CABLE
00XD571	CVTER_PANEL_LGE,C51	CABLE
31049504	Volex 1.0M C5 ITY power cord	CABLE
00XD573	CVTER_PANEL_LG_IPS,C51	CABLE
00XD572	CVTER_PANEL_SAMSUNG,C51	CABLE
31039100	LW BLK1.0m Argentina C5power cord(R)	CABLE
31035395	LW BLK1.0m Indiapower cord(R)	CABLE
31033858	VL BLK1.0m3wire ULCSA power cord(R)	CABLE
31049496	Volex 1.0M C5 UK power cord	CABLE
31049500	Volex 1.0M C5 ANZ power cord	CABLE
31049517	LX(ASAP) 1.0M C5 UL power cord	CABLE
31039105	LW BLK1.0m SA C5power cord(R)	CABLE
31049518	LX(ASAP) 1.0M C5 EU power cord	CABLE
00XD577	LVDS_LG_IPS,C51	CABLE
31049497	Volex 1.0M C5 EU power cord	CABLE
31039101	LW BLK1.0m Denmark C5power cord(R)	CABLE
31039104	LW BLK1.0m Italy C5power cord(R)	CABLE
31035397	LW BLK1.0m ANZpower cord(R)	CABLE
31035396	LW BLK1.0m UKpower cord(R)	CABLE
31045147	LX(ASAP) 1.0M C5 CCC power cord	CABLE
31039106	LW BLK1.0m Korea C5power cord(R)	CABLE
31032953	GS BLK1.0m3wire CCC power cord(R)	CABLE
00XD169	POWER SWITCH CABLE,C51	CABLE
31049520	LX(ASAP) 1.0M C5 ANZ power cord	CABLE
00XD105	SATA_HDD_ODD_Power	CABLE
31049508	Volex 1.0M C5 SWI power cord	CABLE
31049507	Volex 1.0M C5 LA power cord	CABLE
31039107	LW BLK1.0m Israel C5power cord(R)	CABLE
31049505	Volex 1.0M C5 BR power cord	CABLE

Fru P/N	Description	Basic Name
31049503	Volex 1.0M C5 DEN power cord	CABLE
31035332	LW BLK1.0m VDEpower cord(R)	CABLE
01AH311	AVC C5130 720P 1MIC Z CAM	CAMERA
00PC416	Bison CM 720P 5838 Hi165 12D 1DM	CAMERA
00PC412	AVC CM 720P 5838 Hi165 12D 1DM	CAMERA
00PC420	LT CM 720P 5840 Hi162C 12D 1DM	CAMERA
01AJ763	Switch board with HDMI IN C51	CARDPOP
01AJ750	Swith Board C5105	CARDPOP
01AJ751	SSD CONNECT BOARD MP	CARDPOP
00XD097	Slider Cover White,HDMI In,C51	COVER
00XD096	Slider Cover Black,HDMI In,C51	COVER
00XD094	Slider Cover Black,nHDMI In,C51	COVER
00XD095	Slider Cover White,nHDMI In,C51	COVER
5D10G75091	LG panel 23_LM230WF5-TLF1	DISPLAY
00PC202	DT_KYB,DOK5321(US)W-Silk USB,US	DT_KYB
00PC201	DT_KYB,DOK5321(US)B-Silk USB,US	DT_KYB
00PC723	FAN 90x15mm Sysfan for S5130	FAN
16200689	ST Grenada BP2 ST2000DM001 2TB HDD	HDD_ASM
16200688	ST Grenada BP2 ST1000DM003 1TB HDD	HDD_ASM
16200544	WDXL500A WD5000AAKX-08U6AA0 500G HDD-LH	HDD_ASM
16200514	TSB Mars 4K 2TB DT01ACA200 -LH	HDD_ASM
45K0629	HDD,500G,7200,DT3,SATA3,STD	HDD_ASM
45K0623	HDD,1TB,7200,DT3,SATA3,STD	HDD_ASM
16200613	WD XL1000B WD10EZEX-08M2NA0 1TB HDD	HDD_ASM
16200674	ST Pharaoh 4K Non-MC ST500DM002 500GHDD	HDD_ASM
16200513	TSB Mars 4K 1TB DT01ACA100 -LH	HDD_ASM
16200512	TSB Mars 4K 500G DT01ACA050 -LH	HDD_ASM
45K0625	HDD,2TB,7200,DT3,SATA3,STD	HDD_ASM
00PC725	HEATSINK AMD UMA C5105	HEATSINK
00PC724	HEATSINK AMD DIS C5105	HEATSINK
25210994	Liteon SK-8861(GB) 2.4G KB-White8	KYB_MOUSE
25209112	Primax KB4721(US) B-Silk USB KB-LVT8	KYB_MOUSE
25209201	Liteon SK-8861(PT) 2.4G KB-Black8	KYB_MOUSE
25209194	Liteon SK-8861(FR) 2.4G KB-Black8	KYB_MOUSE
25209151	Sunrex EKB-10YA(RU) W-Silk USB KB-LVT8	KYB_MOUSE
25209127	Sunrex EKB-10YA(SL) B-Silk USB KB-LVT8	KYB_MOUSE
25211011	Liteon SK-8861(JP) 2.4G KB-White8	KYB_MOUSE
25209162	Sunrex EKB-10YA(HB) W-Silk USB KB-LVT8	KYB_MOUSE
25209149	Sunrex EKB-10YA(CZ-SL) W-S USB KB-LVT8	KYB_MOUSE

<b>Fru P/N</b>	<b>Description</b>	<b>Basic Name</b>
25211009	Liteon SK-8861(BG) 2.4G KB-White8	KYB_MOUSE
25211002	Liteon SK-8861(ES) 2.4G KB-White8	KYB_MOUSE
25209130	Sunrex EKB-10YA(FR) B-Silk USB KB-LVT8	KYB_MOUSE
25209153	Sunrex EKB-10YA(Nordic) W-S USB KB-LVT8	KYB_MOUSE
25209161	Sunrex EKB-10YA(IT) W-Silk USB KB-LVT8	KYB_MOUSE
25209182	Liteon SK-8861(GB) 2.4G KB-Black8	KYB_MOUSE
25209172	Sunrex EKB-10YA(US-EU) W-S USB KB-LVT8	KYB_MOUSE
25209185	Liteon SK-8861(LA-AR) 2.4G KB-Black8	KYB_MOUSE
25209192	Liteon SK-8861(IT) 2.4G KB-Black8	KYB_MOUSE
25201068	Liteon LXH-SM-8825 W-Silk Mouse	KYB_MOUSE
25209155	Sunrex EKB-10YA(AR) W-Silk USB KB-LVT8	KYB_MOUSE
25209148	Sunrex EKB-10YA(TH) W-Silk USB KB-LVT8	KYB_MOUSE
25209159	Sunrex EKB-10YA(SP) W-Silk USB KB-LVT8	KYB_MOUSE
25211001	Liteon SK-8861(TR) 2.4G KB-White8	KYB_MOUSE
25209200	Liteon SK-8861(EN-FR) 2.4G KB-Black8	KYB_MOUSE
25209135	Sunrex EKB-10YA(JP) B-Silk USB KB-LVT8	KYB_MOUSE
25209128	Sunrex EKB-10YA(IT) B-Silk USB KB-LVT8	KYB_MOUSE
25211007	Liteon SK-8861(GR) 2.4G KB-White8	KYB_MOUSE
25209157	Sunrex EKB-10YA(GE) W-Silk USB KB-LVT8	KYB_MOUSE
25210998	Liteon SK-8861(SA) 2.4G KB-White8	KYB_MOUSE
25211014	Liteon SK-8861(BE-EN) 2.4G KB-White8	KYB_MOUSE
25210995	Liteon SK-8861(Nordic) 2.4G KB-White8	KYB_MOUSE
25203464	Liteon SM-8861(WW) Mouse Black	KYB_MOUSE
25211015	Liteon SK-8861(US-EU) 2.4G KB-White8	KYB_MOUSE
25211016	Liteon SM-8861(WW) 2.4G Mouse White	KYB_MOUSE
25209132	Sunrex EKB-10YA(HG) B-Silk USB KB-LVT8	KYB_MOUSE
25209123	Sunrex EKB-10YA(SW) B-Silk USB KB-LVT8	KYB_MOUSE
25209195	Liteon SK-8861(GR) 2.4G KB-Black8	KYB_MOUSE
25209111	Sunrex EKB-10YA(US) B-Silk USB KB-LVT8	KYB_MOUSE
25201322	Sunrex LXH-EMS-10ZA W-Silk Mouse	KYB_MOUSE
25209203	Liteon SK-8861(US-EU) 2.4G KB-Black8	KYB_MOUSE
25209116	Sunrex EKB-10YA(CZ-SL) B-S USB KB-LVT8	KYB_MOUSE
25211003	Liteon SK-8861(SL) 2.4G KB-White8	KYB_MOUSE
25209154	Sunrex EKB-10YA(LA) W-Silk USB KB-LVT8	KYB_MOUSE
25211004	Liteon SK-8861(IT) 2.4G KB-White8	KYB_MOUSE
25209145	Sunrex EKB-10YA(US) W-Silk USB KB-LVT8	KYB_MOUSE
25209170	Sunrex EKB-10YA(PT) W-Silk USB KB-LVT8	KYB_MOUSE
25209179	Liteon SK-8861(CS-SK) 2.4G KB-Black8	KYB_MOUSE
25209171	Sunrex EKB-10YA(BE-EN) W-S USB KB-LVT8	KYB_MOUSE

<b>Fru P/N</b>	<b>Description</b>	<b>Basic Name</b>
25209181	Liteon SK-8861(RU) 2.4G KB-Black8	KYB_MOUSE
25210987	Liteon SK-8861(US) 2.4G KB-White8	KYB_MOUSE
25209199	Liteon SK-8861(JP) 2.4G KB-Black8	KYB_MOUSE
25209180	Liteon SK-8861(US-IN) 2.4G KB-Black8	KYB_MOUSE
25210988	Liteon SK-8861(US-MY) 2.4G KB-White8	KYB_MOUSE
25211006	Liteon SK-8861(FR) 2.4G KB-White8	KYB_MOUSE
25209118	Sunrex EKB-10YA(RU) B-Silk USB KB-LVT8	KYB_MOUSE
25209115	Sunrex EKB-10YA(TH) B-Silk USB KB-LVT8	KYB_MOUSE
25210993	Liteon SK-8861(RU) 2.4G KB-White8	KYB_MOUSE
25209190	Liteon SK-8861(ES) 2.4G KB-Black8	KYB_MOUSE
25210992	Liteon SK-8861(US-IN) 2.4G KB-White8	KYB_MOUSE
25209131	Sunrex EKB-10YA(GK) B-Silk USB KB-LVT8	KYB_MOUSE
25209146	Primax KB4721(US) W-Silk USB KB-LVT8	KYB_MOUSE
25209167	Sunrex EKB-10YA(KR) W-Silk USB KB-LVT8	KYB_MOUSE
25210991	Liteon SK-8861(CS-SK) 2.4G KB-White8	KYB_MOUSE
25209121	Sunrex EKB-10YA(LA) B-Silk USB KB-LVT8	KYB_MOUSE
25210990	Liteon SK-8861(TH) 2.4G KB-White8	KYB_MOUSE
25209126	Sunrex EKB-10YA(SP) B-Silk USB KB-LVT8	KYB_MOUSE
25209156	Sunrex EKB-10YA(SW) W-Silk USB KB-LVT8	KYB_MOUSE
25209196	Liteon SK-8861(HU) 2.4G KB-Black8	KYB_MOUSE
25209136	Sunrex EKB-10YA(EN-FR) B-S USB KB-LVT8	KYB_MOUSE
25209164	Sunrex EKB-10YA(GK) W-Silk USB KB-LVT8	KYB_MOUSE
25209188	Liteon SK-8861(DE) 2.4G KB-Black8	KYB_MOUSE
25209184	Liteon SK-8861(LA) 2.4G KB-Black8	KYB_MOUSE
25209152	Sunrex EKB-10YA(UK) W-Silk USB KB-LVT8	KYB_MOUSE
25209175	Liteon SK-8861(US) 2.4G KB-Black8	KYB_MOUSE
25209165	Sunrex EKB-10YA(HG) W-Silk USB KB-LVT8	KYB_MOUSE
25209166	Sunrex EKB-10YA(BG) W-Silk USB KB-LVT8	KYB_MOUSE
25209117	Sunrex EKB-10YA(IN) B-Silk USB KB-LVT8	KYB_MOUSE
25210999	Liteon SK-8861(CH) 2.4G KB-White8	KYB_MOUSE
25209137	Sunrex EKB-10YA(PT) B-Silk USB KB-LVT8	KYB_MOUSE
25209186	Liteon SK-8861(SA) 2.4G KB-Black8	KYB_MOUSE
25209168	Sunrex EKB-10YA(JP) W-Silk USB KB-LVT8	KYB_MOUSE
25211013	Liteon SK-8861(PT) 2.4G KB-White8	KYB_MOUSE
25209160	Sunrex EKB-10YA(SL) W-Silk USB KB-LVT8	KYB_MOUSE
25209119	Sunrex EKB-10YA(UK) B-Silk USB KB-LVT8	KYB_MOUSE
25209187	Liteon SK-8861(CH) 2.4G KB-Black8	KYB_MOUSE
25209177	Liteon SK-8861(TW) 2.4G KB-Black8	KYB_MOUSE
25209122	Sunrex EKB-10YA(AR) B-Silk USB KB-LVT8	KYB_MOUSE

<b>Fru P/N</b>	<b>Description</b>	<b>Basic Name</b>
25209138	Sunrex EKB-10YA(BE-EN) B-S USB KB-LVT8	KYB_MOUSE
25209120	Sunrex EKB-10YA(Nordic) B-S USB KB-LVT8	KYB_MOUSE
25209147	Sunrex EKB-10YA(TW) W-Silk USB KB-LVT8	KYB_MOUSE
25209134	Sunrex EKB-10YA(KR) B-Silk USB KB-LVT8	KYB_MOUSE
25209193	Liteon SK-8861(IL) 2.4G KB-Black8	KYB_MOUSE
25209176	Liteon SK-8861(US-MY) 2.4G KB-Black8	KYB_MOUSE
25209139	Sunrex EKB-10YA(US-EU) B-S USB KB-LVT8	KYB_MOUSE
25209191	Liteon SK-8861(SL) 2.4G KB-Black8	KYB_MOUSE
25209197	Liteon SK-8861(BG) 2.4G KB-Black8	KYB_MOUSE
25209183	Liteon SK-8861(Nordic) 2.4G KB-Black8	KYB_MOUSE
25210996	Liteon SK-8861(LA) 2.4G KB-White8	KYB_MOUSE
25209129	Sunrex EKB-10YA(HB) B-Silk USB KB-LVT8	KYB_MOUSE
25209198	Liteon SK-8861(KR) 2.4G KB-Black8	KYB_MOUSE
25211012	Liteon SK-8861(EN-FR) 2.4G KB-White8	KYB_MOUSE
25209178	Liteon SK-8861(TH) 2.4G KB-Black8	KYB_MOUSE
25211010	Liteon SK-8861(KR) 2.4G KB-White8	KYB_MOUSE
25209169	Sunrex EKB-10YA(EN-FR) W-S USB KB-LVT8	KYB_MOUSE
25211008	Liteon SK-8861(HU) 2.4G KB-White8	KYB_MOUSE
25209158	Sunrex EKB-10YA(TR) W-Silk USB KB-LVT8	KYB_MOUSE
25210997	Liteon SK-8861(LA-AR) 2.4G KB-White8	KYB_MOUSE
25210989	Liteon SK-8861(TW) 2.4G KB-White8	KYB_MOUSE
25211005	Liteon SK-8861(IL) 2.4G KB-White8	KYB_MOUSE
25209150	Sunrex EKB-10YA(IN) W-Silk USB KB-LVT8	KYB_MOUSE
25209163	Sunrex EKB-10YA(FR) W-Silk USB KB-LVT8	KYB_MOUSE
25209133	Sunrex EKB-10YA(BG) B-Silk USB KB-LVT8	KYB_MOUSE
25211000	Liteon SK-8861(DE) 2.4G KB-White8	KYB_MOUSE
25209124	Sunrex EKB-10YA(GE) B-Silk USB KB-LVT8	KYB_MOUSE
25209202	Liteon SK-8861(BE-EN) 2.4G KB-Black8	KYB_MOUSE
25209189	Liteon SK-8861(TR) 2.4G KB-Black8	KYB_MOUSE
25209125	Sunrex EKB-10YA(TR) B-Silk USB KB-LVT8	KYB_MOUSE
25209114	Sunrex EKB-10YA(TW) B-Silk USB KB-LVT8	KYB_MOUSE
31503355	LX(ASAP) 1.0M C5 South Africa power cord	LINECORD
31503424	Volex 1.0M C5 2pin Japan power cord	LINECORD
31503356	LX(ASAP) 1.0M C5 Argentina power cord	LINECORD
31503423	Longwell 1.0M C5 2pin Japan power cord	LINECORD
31503353	LX(ASAP) 1.0M C5 India power cord	LINECORD
31503358	LX(ASAP) 1.0M C5 Korea power cord	LINECORD
31503354	LX(ASAP) 1.0M C5 Taiwan power cord	LINECORD
31503362	LX(ASAP) 1.0M C5 Israel power cord	LINECORD

<b>Fru P/N</b>	<b>Description</b>	<b>Basic Name</b>
31503352	LX(ASAP) 1.0M C5 UK power cord	LINECORD
31503359	LX(ASAP) 1.0M C5 Italy power cord	LINECORD
31503425	LS 1.0M C5 2pin Japan power cord	LINECORD
31503360	LX(ASAP) 1.0M C5 Danmark power cord	LINECORD
31503357	LX(ASAP) 1.0M C5 Brazil power cord	LINECORD
5L60J33143	lux 0014+H03VV-F 0.75/3C+0011	LINECORD
31503361	LX(ASAP) 1.0M C5 Switzerland power cord	LINECORD
00XD568	MAINFRAME,Non SSD NT IPS C51	MECH_ASM
00XD567	MAINFRAME,SSD NT IPS C51	MECH_ASM
00XD111	CAMERA 720P	MECH_ASM
00XD566	MAINFRAME,Non SSD NT SAM C51	MECH_ASM
00XD109	MB Shielding, HDMI-IN, C51	MECH_ASM
00XD565	MAINFRAME,SSD NT SAM C51	MECH_ASM
00XD108	MB Shielding, nHDMI IN, C51	MECH_ASM
00XD107	ODD Bezel White,C51	MECH_ASM
00XD118	SIDE IO COVER,WHITE,C51	MECH_ASM
00XD117	SIDE IO COVER,BLACK,C51	MECH_ASM
00XD103	Back CVR, HDMI IN, White,C51	MECH_ASM
00XD102	Back CVR, HDMI IN, Black,C51	MECH_ASM
00XD101	Back CVR, nHDMI In, White,C51	MECH_ASM
00XD100	Back CVR, nHDMI In, Black,C51	MECH_ASM
00XD592	MB Shielding, HDMI-IN, C41	MECH_ASM
00XD591	MB Shielding, nHDMI IN, C41	MECH_ASM
00XD570	FRONT BEZEL,NT White C51	MECH_ASM
00XD115	POWER BOARD	MECH_ASM
00XD114	LCD Panel,NON TOUCH,C51	MECH_ASM
00XD569	FRONT BEZEL,NT Black C51	MECH_ASM
00XD112	LG Panel,Black,T,C51	MECH_ASM
00XD113	LG Panel,White,T,C51	MECH_ASM
00XD121	SAMSUNG Panel,Black,T,C51	MECH_ASM
00XD564	MAINFRAME,Non SSD NT LG C51	MECH_ASM
00XD563	MAINFRAME,SSD NT LG C51	MECH_ASM
00XD562	IPS LG Panel,White,T,C51	MECH_ASM
00XD561	IPS LG Panel,Black,T,C51	MECH_ASM
00XD104	HDD CAGE	MECH_ASM
00XD122	SAMSUNG Panel,White,T,C51	MECH_ASM
00XD106	ODD Bezel Black,C51	MECH_ASM
01EF055	TN Panel,White,T,C5	MECH_ASM
01EF056	TN Panel,Black,T,C5	MECH_ASM

<b>Fru P/N</b>	<b>Description</b>	<b>Basic Name</b>
01EF060	IPS Panel,Black,T,C5	MECH_ASM
01EF059	IPS Panel,White,T,C5	MECH_ASM
1100986	HMT41GS6BFR8A-PB 8GB DDR3L 1600 Sodimm	MEMORY
1100635	MT16KTF1G64HZ-1G6E1 8G D3L-1600S MEMORY	MEMORY
1100957	MT8KTF51264HZ-1G6E1 4GB 1600 Sodimm	MEMORY
03T7117	SODIMM,4G,DDR3L,1600	MEMORY
1100985	HMT451S6BFR8A-PB 4GB DDR3L 1600 Sodimm	MEMORY
1100983	M471B5674QH0-YK0 2GB DDR3L 1600 Sodimm	MEMORY
1100956	MT4KTF25664HZ-1G6E1 2GB 1600 Sodimm	MEMORY
03T7116	SODIMM,2G,DDR3L,1600	MEMORY
1101012	Mic_R D9QBJ ?8GB D3L-1600 Sodimm	MEMORY
03T7118	SODIMM,8G,DDR3L,1600	MEMORY
00PC593	Doking M680B W-Silk USB MC WHT	MOUSE
00PC592	Doking M680B B-Silk USB MC BLK	MOUSE
25200528	Liteon LXH-SM-8825 B-Silk Mouse	MOUSE
25200530	Sunrex LXH-EMS-10ZA B-Silk Mouse	MOUSE
00FC442	SMD,DT,SATA,9.5mm,x8,w/o bezel	OPT_DRIVE
00XD170	RAM SHIELDING,C51	SHIELD
00XD110	AIO 300-23ACL	SPEAKERINT
00JT081	32G,M.2,2242,SATA6G,LTON,STD	SSD_ASM
11203056	TNI Cabo converter board	SUBCARD
00JT461	Wireless,CMB,CBT,43162V2	WIRELESS
00JT527	Wireless,CMB,LTN,8821AE AGN	WIRELESS
00JT454	Wireless,CMB,LTN,8821AE	WIRELESS

## Chapter 12. FRU lists

This chapter lists the information on the field replaceable units (FRUs) for Lenovo All-In-One 300-23ISU desktop computer.

**Attention:** Be sure to read and understand all the safety information before replacing any FRUs.

**Notes:** FRUs that have a 1 or 2 in the CRU column are Customer Replaceable Units (CRUs).

- **1**– identifies parts that are fairly simple to replace, requiring few or no tools.
- **2**– identifies parts that are slightly more difficult to replace.
- **N**– identifies parts that are not to be replaced by the customer.

Fru P/N	Description	Basic Name
54Y8917	CRU,CMN 90W Common adapter	AC_ADAPTER
54Y8966	AC_ADAPTER,90W,100-240V,3P	AC_ADAPTER
54Y8925	AC_ADAPTER,120W,100-240V,3P	AC_ADAPTER
00XD116	WLAN,AIO 300-23ACL	ANTENNA
00UW089	MB,C_3855U,UMA,WIN DPK	BDPLANAR
00UW090	I5-6200U,UMA,HDMI IN,NO DPK	BDPLANAR
00UW091	I5-6200U,UMA,HDMI IN,WIN DPK	BDPLANAR
00UW092	I3-6100U,UMA,HDMI IN,NO DPK	BDPLANAR
00UW100	MB,P_4405U,GF920A 1G,NO DPK	BDPLANAR
00UW098	MB,I3-6100U,GF920A 1G,NO DPK	BDPLANAR
00UW099	MB,I3-6100U,GF920A 1G,WIN DPK	BDPLANAR
00UW103	MB,C_3855U,GF920A 1G,WIN DPK	BDPLANAR
00UW104	MB,I5-6200U,GF920A 2G,NO DPK	BDPLANAR
00UW105	MB,I5-6200U,GF920A 2G,WIN DPK	BDPLANAR
00UW101	MB,P_4405U,GF920A 1G,WIN DPK	BDPLANAR
00UW102	MB,C_3855U,GF920A 1G,NO DPK	BDPLANAR
00UW109	MB,P_4405U,GF920A 2G,WIN DPK	BDPLANAR
00UW106	MB,I3-6100U,GF920A 2G,NO DPK	BDPLANAR
00UW107	MB,I3-6100U,GF920A 2G,WIN DPK	BDPLANAR
00UW108	MB,P_4405U,GF920A 2G,NO DPK	BDPLANAR
00UW084	MB,I3-6100U,UMA,NO DPK	BDPLANAR
00UW086	MB,P_4405U,UMA,NO DPK	BDPLANAR
00UW085	MB,I3-6100U,UMA,WIN DPK	BDPLANAR
00UW082	MB,I5-6200U,UMA,NO DPK	BDPLANAR
00UW087	MB,P_4405U,UMA,WIN DPK	BDPLANAR
00UW088	MB,C_3855U,UMA,NO DPK	BDPLANAR
00UW083	MB,I5-6200U,UMA,WIN DPK	BDPLANAR

Fru P/N	Description	Basic Name
00UW093	I3-6100U,UMA,HDMI IN,WIN DPK	BDPLANAR
00UW094	P_4405U,UMA,HDMI IN,NO DPK	BDPLANAR
00UW095	P_4405U,UMA,HDMI IN,WIN DPK	BDPLANAR
00UW096	C_3855U,UMA,HDMI IN,NO DPK	BDPLANAR
00UW097	C_3855U,UMA,HDMI IN,WIN DPK	BDPLANAR
00UW111	MB,C_3855U,GF920A 2G,WIN DPK	BDPLANAR
00UW110	MB,C_3855U,GF920A 2G,NO DPK	BDPLANAR
31038885	LW BLK 1.0m Taiwan C5power cord (R)	CABLE
31049498	Volex 1.0M C5 KOR power cord	CABLE
00XD574	CVTER_MB_C51	CABLE
31049499	Volex 1.0M C5 TW power cord	CABLE
31033857	LW BLK1.0m3wire ULCSA power cord(R)	CABLE
31035828	LW BLK 1.0m Brazilpower cord (R)	CABLE
31049501	Volex 1.0M C5 SA power cord	CABLE
00XD617	CVTER_MB_C41	CABLE
31049502	Volex 1.0M C5 ISI power cord	CABLE
31039103	LW BLK 1.0m Switzerland C5power cord (R)	CABLE
00XD616	CVTER_PANEL_LG_IPS,C41	CABLE
31049504	Volex 1.0M C5 ITY power cord	CABLE
31039100	LW BLK 1.0m Argentina C5power cord (R)	CABLE
31035395	LW BLK 1.0m Indiapower cord (R)	CABLE
31033858	VL BLK1.0m3wire ULCSA power cord(R)	CABLE
31049496	Volex 1.0M C5 UK power cord	CABLE
31049500	Volex 1.0M C5 ANZ power cord	CABLE
00XD620	LVDS_LG_IPS,C41	CABLE
31049517	LX(ASAP) 1.0M C5 UL power cord	CABLE
31039105	LW BLK 1.0m SA C5power cord (R)	CABLE
00XD613	CVTER_PANEL_LGE,C41	CABLE
00XD618	LVDS_LG,C41	CABLE
31049518	LX(ASAP) 1.0M C5 EU power cord	CABLE
00XD619	LVDS_Samsung_AUO,C41	CABLE
31049497	Volex 1.0M C5 EU power cord	CABLE
31039101	LW BLK 1.0m Denmark C5power cord (R)	CABLE
31039104	LW BLK 1.0m Italy C5power cord (R)	CABLE
31035397	LW BLK 1.0m ANZpower cord (R)	CABLE
31035396	LW BLK 1.0m UKpower cord (R)	CABLE
31045147	LX(ASAP) 1.0M C5 CCC power cord	CABLE
31039106	LW BLK 1.0m Korea C5power cord (R)	CABLE
31032953	GS BLK1.0m3wire CCC power cord(R)	CABLE

Fru P/N	Description	Basic Name
00XD169	POWER SWITCH CABLE,C51	CABLE
31049520	LX(ASAP) 1.0M C5 ANZ power cord	CABLE
00XD105	SATA_HDD_ODD_Power	CABLE
31049508	Volex 1.0M C5 SWI power cord	CABLE
31049507	Volex 1.0M C5 LA power cord	CABLE
31039107	LW BLK 1.0m Israel C5power cord (R)	CABLE
31049505	Volex 1.0M C5 BR power cord	CABLE
00XD614	CVTER_PANEL_SAMSUNG,C41	CABLE
31049503	Volex 1.0M C5 DEN power cord	CABLE
31035332	LW BLK 1.0m VDEpower cord (R)	CABLE
00XD615	CVTER_PANEL_AUO,C41	CABLE
01AH311	AVC C5130 720P 1MIC Z CAM	CAMERA
00PC416	Bison CM 720P 5838 Hi165 12D 1DM	CAMERA
00PC412	AVC CM 720P 5838 Hi165 12D 1DM	CAMERA
00PC420	LT CM 720P 5840 Hi162C 12D 1DM	CAMERA
01AJ763	Switch board with HDMI IN C51	CARDPOP
01AJ750	Swith Board C5105	CARDPOP
00XD579	Slider Cover Black,nHDMI In,C41	COVER
00XD580	Slider Cover White,nHDMI In,C41	COVER
00XD581	Slider Cover Black,HDMI In,C41	COVER
00XD582	Slider Cover White,HDMI In,C41	COVER
18200835	AUO M215HTN01.1	DISPLAY
00PC202	DT_KYB,DOK5321(US)W-Silk USB,US	DT_KYB
00PC201	DT_KYB,DOK5321(US)B-Silk USB,US	DT_KYB
00PC723	FAN 90x15mm Sysfan for S5130	FAN
16200689	ST Grenada BP2 ST2000DM001 2TB HDD	HDD_ASM
16200688	ST Grenada BP2 ST1000DM003 1TB HDD	HDD_ASM
16200544	WDXL500A WD5000AAKX-08U6AA0 500G HDD-LH	HDD_ASM
00PC554	SSHS,1TB,7200,DT3,SATA3,STD	HDD_ASM
16200514	TSB Mars 4K 2TB DT01ACA200 -LH	HDD_ASM
45K0629	HDD,500G,7200,DT3,SATA3,STD	HDD_ASM
45K0623	HDD,1TB,7200,DT3,SATA3,STD	HDD_ASM
16200613	WD XL1000B WD10EZEX-08M2NA0 1TB HDD	HDD_ASM
16200674	ST Pharaoh 4K Non-MC ST500DM002 500GHDD	HDD_ASM
16200513	TSB Mars 4K 1TB DT01ACA100 -LH	HDD_ASM
16200512	TSB Mars 4K 500G DT01ACA050 -LH	HDD_ASM
45K0625	HDD,2TB,7200,DT3,SATA3,STD	HDD_ASM
00XD075	HEATSINK Intel UMA	HEATSINK
00XD074	HEATSINK Intel DIS	HEATSINK

<b>Fru P/N</b>	<b>Description</b>	<b>Basic Name</b>
25210994	Liteon SK-8861(GB) 2.4G KB-White8	KYB_MOUSE
25209112	Primax KB4721(US) B-Silk USB KB-LVT8	KYB_MOUSE
25209201	Liteon SK-8861(PT) 2.4G KB-Black8	KYB_MOUSE
25209194	Liteon SK-8861(FR) 2.4G KB-Black8	KYB_MOUSE
25209151	Sunrex EKB-10YA(RU) W-Silk USB KB-LVT8	KYB_MOUSE
25209127	Sunrex EKB-10YA(SL) B-Silk USB KB-LVT8	KYB_MOUSE
25211011	Liteon SK-8861(JP) 2.4G KB-White8	KYB_MOUSE
25209162	Sunrex EKB-10YA(HB) W-Silk USB KB-LVT8	KYB_MOUSE
25209149	Sunrex EKB-10YA(CZ-SL) W-S USB KB-LVT8	KYB_MOUSE
25211009	Liteon SK-8861(BG) 2.4G KB-White8	KYB_MOUSE
25211002	Liteon SK-8861(ES) 2.4G KB-White8	KYB_MOUSE
25209130	Sunrex EKB-10YA(FR) B-Silk USB KB-LVT8	KYB_MOUSE
25209153	Sunrex EKB-10YA(Nordic) W-S USB KB-LVT8	KYB_MOUSE
25209161	Sunrex EKB-10YA(IT) W-Silk USB KB-LVT8	KYB_MOUSE
25209182	Liteon SK-8861(GB) 2.4G KB-Black8	KYB_MOUSE
25209172	Sunrex EKB-10YA(US-EU) W-S USB KB-LVT8	KYB_MOUSE
25209185	Liteon SK-8861(LA-AR) 2.4G KB-Black8	KYB_MOUSE
25209192	Liteon SK-8861(IT) 2.4G KB-Black8	KYB_MOUSE
25201068	Liteon LXH-SM-8825 W-Silk Mouse	KYB_MOUSE
25209155	Sunrex EKB-10YA(AR) W-Silk USB KB-LVT8	KYB_MOUSE
25209148	Sunrex EKB-10YA(TH) W-Silk USB KB-LVT8	KYB_MOUSE
25209159	Sunrex EKB-10YA(SP) W-Silk USB KB-LVT8	KYB_MOUSE
25211001	Liteon SK-8861(TR) 2.4G KB-White8	KYB_MOUSE
25209200	Liteon SK-8861(EN-FR) 2.4G KB-Black8	KYB_MOUSE
25209135	Sunrex EKB-10YA(JP) B-Silk USB KB-LVT8	KYB_MOUSE
25209128	Sunrex EKB-10YA(IT) B-Silk USB KB-LVT8	KYB_MOUSE
25211007	Liteon SK-8861(GR) 2.4G KB-White8	KYB_MOUSE
25209157	Sunrex EKB-10YA(GE) W-Silk USB KB-LVT8	KYB_MOUSE
25210998	Liteon SK-8861(SA) 2.4G KB-White8	KYB_MOUSE
25211014	Liteon SK-8861(BE-EN) 2.4G KB-White8	KYB_MOUSE
25210995	Liteon SK-8861(Nordic) 2.4G KB-White8	KYB_MOUSE
25203464	Liteon SM-8861(WW) Mouse Black	KYB_MOUSE
25211015	Liteon SK-8861(US-EU) 2.4G KB-White8	KYB_MOUSE
25211016	Liteon SM-8861(WW) 2.4G Mouse White	KYB_MOUSE
25209132	Sunrex EKB-10YA(HG) B-Silk USB KB-LVT8	KYB_MOUSE
25209123	Sunrex EKB-10YA(SW) B-Silk USB KB-LVT8	KYB_MOUSE
25209195	Liteon SK-8861(GR) 2.4G KB-Black8	KYB_MOUSE
25209111	Sunrex EKB-10YA(US) B-Silk USB KB-LVT8	KYB_MOUSE
25201322	Sunrex LXH-EMS-10ZA W-Silk Mouse	KYB_MOUSE

<b>Fru P/N</b>	<b>Description</b>	<b>Basic Name</b>
25209203	Liteon SK-8861(US-EU) 2.4G KB-Black8	KYB_MOUSE
25209116	Sunrex EKB-10YA(CZ-SL) B-S USB KB-LVT8	KYB_MOUSE
25211003	Liteon SK-8861(SL) 2.4G KB-White8	KYB_MOUSE
25209154	Sunrex EKB-10YA(LA) W-Silk USB KB-LVT8	KYB_MOUSE
25211017	Liteon SM-8861 2.4G Mouse(No Battery)WTE	KYB_MOUSE
25211004	Liteon SK-8861(IT) 2.4G KB-White8	KYB_MOUSE
25209145	Sunrex EKB-10YA(US) W-Silk USB KB-LVT8	KYB_MOUSE
25211018	Liteon SM-8861 2.4G Mouse(MY) White	KYB_MOUSE
25209170	Sunrex EKB-10YA(PT) W-Silk USB KB-LVT8	KYB_MOUSE
25209179	Liteon SK-8861(CS-SK) 2.4G KB-Black8	KYB_MOUSE
25209171	Sunrex EKB-10YA(BE-EN) W-S USB KB-LVT8	KYB_MOUSE
25209181	Liteon SK-8861(RU) 2.4G KB-Black8	KYB_MOUSE
25210987	Liteon SK-8861(US) 2.4G KB-White8	KYB_MOUSE
25209199	Liteon SK-8861(JP) 2.4G KB-Black8	KYB_MOUSE
25209180	Liteon SK-8861(US-IN) 2.4G KB-Black8	KYB_MOUSE
25210988	Liteon SK-8861(US-MY) 2.4G KB-White8	KYB_MOUSE
25211006	Liteon SK-8861(FR) 2.4G KB-White8	KYB_MOUSE
25203466	Liteon SM-8861 Mouse(MY) Black	KYB_MOUSE
25209118	Sunrex EKB-10YA(RU) B-Silk USB KB-LVT8	KYB_MOUSE
25211019	Liteon SM-8861 2.4G Mouse(JP) White	KYB_MOUSE
25209115	Sunrex EKB-10YA(TH) B-Silk USB KB-LVT8	KYB_MOUSE
25210993	Liteon SK-8861(RU) 2.4G KB-White8	KYB_MOUSE
25209190	Liteon SK-8861(ES) 2.4G KB-Black8	KYB_MOUSE
25210992	Liteon SK-8861(US-IN) 2.4G KB-White8	KYB_MOUSE
25209131	Sunrex EKB-10YA(GK) B-Silk USB KB-LVT8	KYB_MOUSE
25209146	Primax KB4721(US) W-Silk USB KB-LVT8	KYB_MOUSE
25209167	Sunrex EKB-10YA(KR) W-Silk USB KB-LVT8	KYB_MOUSE
25210991	Liteon SK-8861(CS-SK) 2.4G KB-White8	KYB_MOUSE
25209121	Sunrex EKB-10YA(LA) B-Silk USB KB-LVT8	KYB_MOUSE
25210990	Liteon SK-8861(TH) 2.4G KB-White8	KYB_MOUSE
25209126	Sunrex EKB-10YA(SP) B-Silk USB KB-LVT8	KYB_MOUSE
25209196	Liteon SK-8861(HU) 2.4G KB-Black8	KYB_MOUSE
25209156	Sunrex EKB-10YA(SW) W-Silk USB KB-LVT8	KYB_MOUSE
25205773	Liteon SM-8861(JP) Mouse-Black	KYB_MOUSE
25209136	Sunrex EKB-10YA(EN-FR) B-S USB KB-LVT8	KYB_MOUSE
25209164	Sunrex EKB-10YA(GK) W-Silk USB KB-LVT8	KYB_MOUSE
25209188	Liteon SK-8861(DE) 2.4G KB-Black8	KYB_MOUSE
25209184	Liteon SK-8861(LA) 2.4G KB-Black8	KYB_MOUSE
25209152	Sunrex EKB-10YA(UK) W-Silk USB KB-LVT8	KYB_MOUSE

<b>Fru P/N</b>	<b>Description</b>	<b>Basic Name</b>
25209175	Liteon SK-8861(US) 2.4G KB-Black8	KYB_MOUSE
25209165	Sunrex EKB-10YA(HG) W-Silk USB KB-LVT8	KYB_MOUSE
25209166	Sunrex EKB-10YA(BG) W-Silk USB KB-LVT8	KYB_MOUSE
25209117	Sunrex EKB-10YA(IN) B-Silk USB KB-LVT8	KYB_MOUSE
25210999	Liteon SK-8861(CH) 2.4G KB-White8	KYB_MOUSE
25209137	Sunrex EKB-10YA(PT) B-Silk USB KB-LVT8	KYB_MOUSE
25209186	Liteon SK-8861(SA) 2.4G KB-Black8	KYB_MOUSE
25209168	Sunrex EKB-10YA(JP) W-Silk USB KB-LVT8	KYB_MOUSE
25211013	Liteon SK-8861(PT) 2.4G KB-White8	KYB_MOUSE
25209160	Sunrex EKB-10YA(SL) W-Silk USB KB-LVT8	KYB_MOUSE
25209119	Sunrex EKB-10YA(UK) B-Silk USB KB-LVT8	KYB_MOUSE
25209187	Liteon SK-8861(CH) 2.4G KB-Black8	KYB_MOUSE
25209177	Liteon SK-8861(TW) 2.4G KB-Black8	KYB_MOUSE
25209122	Sunrex EKB-10YA(AR) B-Silk USB KB-LVT8	KYB_MOUSE
25209138	Sunrex EKB-10YA(BE-EN) B-S USB KB-LVT8	KYB_MOUSE
25209120	Sunrex EKB-10YA(Nordic) B-S USB KB-LVT8	KYB_MOUSE
25209147	Sunrex EKB-10YA(TW) W-Silk USB KB-LVT8	KYB_MOUSE
25209134	Sunrex EKB-10YA(KR) B-Silk USB KB-LVT8	KYB_MOUSE
25209193	Liteon SK-8861(IL) 2.4G KB-Black8	KYB_MOUSE
25209176	Liteon SK-8861(US-MY) 2.4G KB-Black8	KYB_MOUSE
25209139	Sunrex EKB-10YA(US-EU) B-S USB KB-LVT8	KYB_MOUSE
25209191	Liteon SK-8861(SL) 2.4G KB-Black8	KYB_MOUSE
25209183	Liteon SK-8861(Nordic) 2.4G KB-Black8	KYB_MOUSE
25209197	Liteon SK-8861(BG) 2.4G KB-Black8	KYB_MOUSE
25210996	Liteon SK-8861(LA) 2.4G KB-White8	KYB_MOUSE
25209129	Sunrex EKB-10YA(HB) B-Silk USB KB-LVT8	KYB_MOUSE
25209198	Liteon SK-8861(KR) 2.4G KB-Black8	KYB_MOUSE
25211012	Liteon SK-8861(EN-FR) 2.4G KB-White8	KYB_MOUSE
25203465	Liteon SM-8861 Mouse(No Battery) Black	KYB_MOUSE
25209178	Liteon SK-8861(TH) 2.4G KB-Black8	KYB_MOUSE
25211010	Liteon SK-8861(KR) 2.4G KB-White8	KYB_MOUSE
25209169	Sunrex EKB-10YA(EN-FR) W-S USB KB-LVT8	KYB_MOUSE
25211008	Liteon SK-8861(HU) 2.4G KB-White8	KYB_MOUSE
25209158	Sunrex EKB-10YA(TR) W-Silk USB KB-LVT8	KYB_MOUSE
25210997	Liteon SK-8861(LA-AR) 2.4G KB-White8	KYB_MOUSE
25210989	Liteon SK-8861(TW) 2.4G KB-White8	KYB_MOUSE
25211005	Liteon SK-8861(IL) 2.4G KB-White8	KYB_MOUSE
25209150	Sunrex EKB-10YA(IN) W-Silk USB KB-LVT8	KYB_MOUSE
25209163	Sunrex EKB-10YA(FR) W-Silk USB KB-LVT8	KYB_MOUSE

<b>Fru P/N</b>	<b>Description</b>	<b>Basic Name</b>
25209133	Sunrex EKB-10YA(BG) B-Silk USB KB-LVT8	KYB_MOUSE
25211000	Liteon SK-8861(DE) 2.4G KB-White8	KYB_MOUSE
25209124	Sunrex EKB-10YA(GE) B-Silk USB KB-LVT8	KYB_MOUSE
25209202	Liteon SK-8861(BE-EN) 2.4G KB-Black8	KYB_MOUSE
25209189	Liteon SK-8861(TR) 2.4G KB-Black8	KYB_MOUSE
25209125	Sunrex EKB-10YA(TR) B-Silk USB KB-LVT8	KYB_MOUSE
25209114	Sunrex EKB-10YA(TW) B-Silk USB KB-LVT8	KYB_MOUSE
31503355	LX(ASAP) 1.0M C5 South Africa power cord	LINECORD
31503424	Volex 1.0M C5 2pin Japan power cord	LINECORD
31503356	LX(ASAP) 1.0M C5 Argentina power cord	LINECORD
31503423	Longwell 1.0M C5 2pin Japan power cord	LINECORD
31503353	LX(ASAP) 1.0M C5 India power cord	LINECORD
31503358	LX(ASAP) 1.0M C5 Korea power cord	LINECORD
31503354	LX(ASAP) 1.0M C5 Taiwan power cord	LINECORD
31503362	LX(ASAP) 1.0M C5 Israel power cord	LINECORD
31503352	LX(ASAP) 1.0M C5 UK power cord	LINECORD
31503359	LX(ASAP) 1.0M C5 Italy power cord	LINECORD
31503425	LS 1.0M C5 2pin Japan power cord	LINECORD
31503360	LX(ASAP) 1.0M C5 Danmark power cord	LINECORD
31503357	LX(ASAP) 1.0M C5 Brazil power cord	LINECORD
5L60J33143	lux 0014+H03VV-F 0.75/3C+0011	LINECORD
31503361	LX(ASAP) 1.0M C5 Switzerland power cord	LINECORD
00XD111	CAMERA 720P	MECH_ASM
00XD109	MB Shielding, HDMI-IN, C51	MECH_ASM
00XD108	MB Shielding, nHDMI IN, C51	MECH_ASM
00XD601	LG IPS Panel,White,T,C41	MECH_ASM
00XD596	SAMSUNG Panel,Black,T,C41	MECH_ASM
00XD608	FRONT BEZEL,NT Black C41	MECH_ASM
00XD590	ODD Bezel White,C41	MECH_ASM
00XD586	Back CVR, nHDMI In, White,C41	MECH_ASM
00XD588	Back CVR, HDMI IN, White,C41	MECH_ASM
00XD585	Back CVR, nHDMI In, Black,C41	MECH_ASM
00XD607	MAINFRAME,Non SSD NT IPS C41	MECH_ASM
00XD603	MAINFRAME,Non SSD NT LG C41	MECH_ASM
00XD597	SAMSUNG Panel,White,T,C41	MECH_ASM
00XD609	FRONT BEZEL,NT White C41	MECH_ASM
00XD599	AUO Panel,White,T,C41	MECH_ASM
00XD612	SIDE IO COVER,WHITE,C41	MECH_ASM
00XD595	LG Panel,White,T,C41	MECH_ASM

<b>Fru P/N</b>	<b>Description</b>	<b>Basic Name</b>
00XD592	MB Shielding, HDMI-IN, C41	MECH_ASM
00XD611	SIDE IO COVER,BLACK,C41	MECH_ASM
00XD591	MB Shielding, nHDMI IN, C41	MECH_ASM
00XD115	POWER BOARD	MECH_ASM
00XD651	LCD Panel,NON TOUCH,C4130	MECH_ASM
00XD104	HDD CAGE	MECH_ASM
00XD600	LG IPS Panel,Black,T,C41	MECH_ASM
00XD589	ODD Bezel Black,C41	MECH_ASM
00XD605	MAINFRAME,Non SSD NT SAM C41	MECH_ASM
00XD594	LG Panel,Black,T,C41	MECH_ASM
00XD598	AUO Panel,Black,T,C41	MECH_ASM
00XD587	Back CVR, HDMI IN, Black,C41	MECH_ASM
01EF071	IPS Panel,White,T,C4	MECH_ASM
01EF069	TN Panel,White,T,C4	MECH_ASM
01EF072	IPS Panel,Black,T,C4	MECH_ASM
01EF070	TN Panel,Black,T,C4	MECH_ASM
03T7413	4G,SODIMM,DDR4,2133MHz	MEMORY
03T7414	8G,SODIMM,DDR4,2133MHz	MEMORY
00PC593	Doking M680B W-Silk USB MC WHT	MOUSE
00PC592	Doking M680B B-Silk USB MC BLK	MOUSE
25200528	Liteon LXH-SM-8825 B-Silk Mouse	MOUSE
25200530	Sunrex LXH-EMS-10ZA B-Silk Mouse	MOUSE
00FC442	SMD,DT,SATA,9.5mm,x8,w/o bezel	OPT_DRIVE
00XD170	RAM SHIELDING,C51	SHIELD
00XD593	Speaker ,C41	SPEAKERINT
00XD583	HINGE STAND,DEEP SILVER	STAND
00XD584	HINGE STAND,LIGHT SILVER	STAND
00XD092	BASE STAND,DEEP SILVER	STAND
00XD093	BASE STAND,LIGHT SILVER	STAND
11203056	TNI Cabo converter board	SUBCARD
00JT507	Wireless,CMB,IN,3165 ac Ind	WIRELESS
00JT497	Wireless,CMB,IN,3165 ac	WIRELESS
00JT454	Wireless,CMB,LTN,8821AE	WIRELESS

---

## Chapter 13. General information

This chapter provides general information that applies to all computer models covered by this manual.

---

### Additional Service Information

This chapter provides additional information that the service representative might find helpful.

#### Power management

Power management reduces the power consumption of certain components of the computer such as the system power supply, processor, hard disk drives, and some monitors.

#### Advanced configuration and power interface (ACPI) BIOS

As this computer has an ACPI BIOS system, the operating system is allowed to control the power management features of the computer and the settings for Advanced Power Management (APM) BIOS mode is ignored. Not all operating systems support ACPI BIOS mode.

#### Automatic Power-On features

The Automatic Power-On features within the Power Management menu allow you to enable and disable features that turn on the computer automatically.

- **Wake Up on Alarm:** You can specify a date and time at which the computer will be turned on automatically. This can be either a single event, a daily event or a weekly event.
- **Wake Up on LAN:** This feature allows LAN adapter card to wake the System.