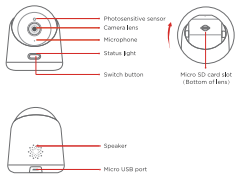
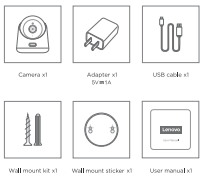


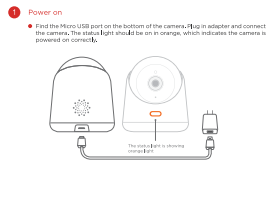
## Product Overview



## Packing List



## User Guide



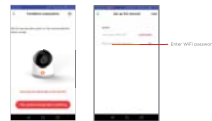
### 2. Download and install APP

- Download the app by downloading Lenovo Smart Camera on the App Store or Google Play.
- Run the APP and follow the steps to get to the main screen. You are the first time to use.



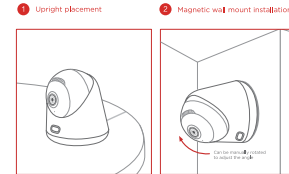
### 3. Add camera

- Please ensure that your phone is connected to the 2.4GHz WiFi and the camera connects the same WiFi to the firm.
- When the status light is showing a blinking orange light, open the APP to select the device. Please make sure the camera's orange light is flashing, meaning WiFi password is not "root", then wait for your mobile phone to search for the device.



- Wait for the status light to start from blinking white to red (flashing white). When the status light is showing a steady white light, the device is connected to the internet.
- When the device name shows up on the device list, click "Add" to add the device.

## Installation Method



For more information about this product, please visit the website [www.lenovo.com](http://www.lenovo.com)

## FAQ

- How to turn on/off the device via the button?  
A short press on the button to turn on the device. Press and hold the button for 2 seconds to turn off the device. Meanwhile, the voice prompt "Shutting Down" is being played.
- How to restore this device to the factory default settings?  
When the device is turned on, press and hold the switch button for 8 seconds until hear the voice prompt "Reset Success".
- What does the indicator mean in different status?  

Indicator	Meaning
Constant Orange	Camera is activating
Blinking Orange	Ready for installation
Blinking White	Device is connecting with internet router
Rapid Blinking White	Device has connected with router successfully and is connecting with cloud service platform
Constant White	Camera online
Lighting White per 5 seconds	Firmware upgrading
Blinking White per 5 seconds	Micro Mode: only keep network connection for quick network
- What capacity TF card does the camera support?  
The maximum capacity of TF card can be supported, to ensure the stability of TF cards. Please choose the genuine high speed card.
- What should be paid attention to when using the camera normally?  
For better night vision effect, please avoid the straight front and side front of the lens near the reflective object such as the glass, wall, etc., in order to avoid causing the screen dark or white.

## After-sales Service

- Product warranty information
 

Product	Warranty scope	Warranty period (years)	Type of service
Lenovo Smart Camera	Camera	12	Provide warranty service within the warranty period.
	Power adapter		
	Charging cable		

  - For detail of warranty service, please contact local Authorized Distributors in your country.
- Warranty policy exception
  - Outside of warranty time period.
  - Damages caused by improper use, maintain, storage and unauthorized repair.
  - Damage or malfunction caused by force majeure circumstances.
  - The normal depreciation and wear in using is not covered by the warranty policy.
- Contact us
  - Email: [HCsupport@lenovo.com](mailto:HCsupport@lenovo.com)

## Warranty Card

User information

Name \_\_\_\_\_ Phone number \_\_\_\_\_

Email \_\_\_\_\_ Post code \_\_\_\_\_

Address \_\_\_\_\_

Product information

Name \_\_\_\_\_ Model \_\_\_\_\_

Color \_\_\_\_\_ Serial No. \_\_\_\_\_

Required service  Return  Replace  Maintenance

Failure information \_\_\_\_\_

Service date \_\_\_\_\_ Signature \_\_\_\_\_

## Technical Specifications

Product Name	Lenovo Smart Camera
Product Model	S1
Power Input	DC 5V/0.5A
Operation	100-240V
Camera Angle	120°
Micro SD Card Support	Max Support 64G
Cloud Service	Optional (Optional - third purchase)
Working Power	5W/Max
Working Temperature	0°-40°C
Working Humidity	10%-90%
WiFi Standard	802.11 b/g/n, 2.4GHz

## Warning

- Water unattended or incompatible power cable may cause fire, explosion or other hazards.
- The product and accessories contain some small parts. Please keep them unreachible from children, to avoid in case of inadvertent damage to the product or other dangers to them.
- This product is not a toy, children should use the product under adult supervision.
- Remove the product when the temperature rises of 40°C/104°F. When the ambient temperature is high or too high, it may cause device failure.
- Do not expose the products and accessories to rain or moisture, thus prevent your normal use from being affected.
- For the safety of you and your family, please make sure that the product is not bound by an unauthorized person. Lenovo will take strict measures to protect the information security of you and your family.

## FCC Statement

- The equipment has been tested and found to comply with the limits for a Class B digital device, pursuant to part 15 of the FCC rules. These limits are designed to provide reasonable protection against harmful interference in a residential installation. The equipment generates, uses and can radiate radio frequency energy and, if not installed and used in accordance with the instructions, may cause harmful interference to radio communication. However, there is no guarantee that interference will not occur in a particular installation. If the equipment does cause harmful interference to radio or television reception, which can be determined by turning the equipment off and on, the user is encouraged to try to correct the interference by one or more of the following measures:
  - Reorient or relocate the receiving antenna.
  - Increase the separation between the equipment and receiver.
  - Connect the equipment into an outlet on a circuit different from that to which the receiver is connected.
  - Consult the dealer or an experienced radio/TV technician for help.
- To avoid potential compliance, any changes or modifications not expressly approved by the party.
- Precautions for compliance should used the user's authority to operate the equipment. (Examples use only shielded interface cables when connecting to computer or peripheral devices.)
- This equipment complies with Part 15 of the FCC Rules. Operation is subject to the following two conditions:
  - (1) The device may not cause harmful interference, and
  - (2) The device must accept any interference received, including interference that may cause undesired operation.
- FCC Radiation Exposure Statement:  
The equipment complies with FCC Radiation exposure limits set forth for uncontrolled environment. This equipment should be installed and operated with minimum distance 20cm between the radiator and your body.

Lenovo